

4/19/89

P&H

TAG NO.	DATE
4628	880628
4629	880526
4630	880526
4632	880526
4633	880530
4634	880530
4637	880602
4638	880602
4639	880602
4640	880602
4641	880602
4642	880602
4643	880602
4644	880602
4645	880603
4646	880603
4649	880603
4650	880603
6704	830810
6705	830810
6706	830810
6951	830428
6952	830428
6953	830430
6954	830430
6955	830430
6957	830430
6958	830430
6959	830430
6960	830430
6961	830430
6962	830502
6963	830502
6964	830502
6965	830502
6966	830502
6967	830502
6968	830502
6969	830505
6970	830502
6971	830505
6972	830505
6973	830507
6974	830507
6975	830510
6976	830510
6977	830510
6978	830510
6979	830511
6980	830511
6982	830511
6983	830511
6984	830511
6985	830511
6986	830511

6987	830511
6988	830511
6989	830511
6990	830512
6991	830512
6992	830512
6993	830512
6994	830514
6995	830519
6997	830519
7000	830524
7001	830524
7002	830524
7003	830524
7004	830524
7006	830524
7007	830524
7008	830524
7009	830525
7010	830525
7011	830525
7012	830525
7013	830525
7014	830525
7015	830525
7016	830529
7017	830529
7018	830529
7019	830529
7019	830529
7020	830601
7021	830601
7022	830601
7023	830606
7024	830606
7025	830606
7026	830606
7027	830606
7028	830606
7029	830606
7030	830606
7031	830606
7032	830606
7033	830606
7034	830606
7035	830611
7036	830606
7037	830611
7038	830606
7040	830611
7041	830611
7042	830611
7043	830611
7044	830611
7045	830611
7047	830611

7048	830611
7049	830614
7050	830614
7051	830614
7052	830614
7053	830614
7054	830614
7055	830614
7056	830614
7057	830614
7059	830614
7061	830614
7062	830614
7063	830614
7064	830614
7065	830614
7066	830614
7067	830614
7069	830614
7070	830618
7071	830618
7072	830618
7073	830618
7076	830618
7077	830619
7080	830619
7081	830621
7082	830621
7083	830625
7084	830628
7085	860629
7086	830629
7087	830630
7088	830630
7089	830630
7090	830630
7091	830630
7092	830630
7093	830630
7094	830630
7095	830630
7097	830630
7100	830630
7101	830630
7102	830701
7103	830701
7104	830701
7105	830703
7106	830701
7107	830705
7108	830705
7109	830706
7110	830706
7113	830706
7114	830706
7115	830706

7116	830706
7117	830706
7118	830706
7119	830707
7120	830707
7121	830707
7122	830707
7123	830707
7124	830707
7125	830707
7126	830707
7127	830707
7128	830707
7129	830707
7130	830707
7131	830707
7132	830707
7134	830707
7135	830707
7136	830708
7137	830708
7138	830708
7139	830708
7140	830708
7141	830708
7143	830708
7145	830708
7146	830709
7149	830709
7150	830709
7351	830709
7352	830711
7353	830711
7354	830711
7355	830711
7356	830711
7358	830711
7359	830711
7360	830712
7361	830712
7362	830712
7363	830712
7364	830712
7365	830712
7366	830712
7367	830712
7368	830712
7369	830712
7370	830712
7371	830712
7372	830712
7373	830712
7374	830712
7375	830712
7376	830712
7377	830712

7378	830712
7380	830712
7384	830713
7385	830713
7387	830713
7388	830713
7389	830713
7390	830713
7391	830713
7392	830713
7393	830713
7394	830713
7395	830713
7396	830713
7397	830713
7398	830713
7399	830713
7400	830713
7402	830714
7403	830714
7404	830714
7405	830714
7406	830714
7407	830714
7408	830714
7409	830714
7410	830714
7414	830714
7415	830714
7416	830715
7417	830715
7418	830715
7419	830715
7421	830715
7422	830715
7423	830716
7424	830716
7425	830716
7426	830716
8253	840707
8254	840707
8255	840707
8256	840708
8257	840708
8258	840708
8259	840708
8260	840708
8261	840708
8262	840708
8263	840708
8264	840711
8265	840711
8266	840712
8267	840712
8268	840712
8270	840712

8271	840712
8272	840712
8272	840723
8273	840712
8273	840723
8274	840712
8275	840712
8276	840712
8277	840712
8278	840712
8279	840712
8280	840712
8281	840712
8282	840712
8283	840713
8284	840713
8287	840714
8288	840714
8289	840714
8290	840714
8291	840714
8292	840714
8293	840714
8294	840714
8295	840716
8296	840717
8297	840716
8298	840716
8299	840716
8300	840716
8301	840717
8302	840718
8303	840718
8304	840719
8305	840719
8306	840719
8307	840719
8308	840719
8309	840719
8310	840719
8311	840719
8312	840719
8313	840719
8314	840720
8315	840720
8316	840720
8317	840720
8318	840720
8319	840720
8320	840720
8321	840720
8322	840720
8323	840720
8324	840720
8325	840720
8326	840720

8327	840720
8328	840723
8329	840723
8330	840723
8331	840723
8332	840724
8333	840724
8334	840724
8335	840724
8336	840724
8337	840724
8338	840724
8339	840724
8340	840724
8341	840724
8342	840724
8343	840724
8344	840724
8345	840724
8346	840724
8347	840724
8348	840724
8349	840724
8350	840724
8351	840724
8352	840725
8353	840725
8354	840729
8355	840729
8356	840729
8357	840729
8358	840729
8359	840729
8362	840729
8363	840729
8364	840729
8365	840730
8366	840730
8367	840730
8368	840730
8369	840730
8370	840730
8371	840730
8372	840730
8373	840730
8374	840730
8375	840730
8376	840730
8377	840730
8378	840730
8379	840730
8381	840730
8382	840801
8383	840801
8384	840801
8385	840801

8386	840801
8387	840801
8388	840801
8389	840801
8390	840801
8391	840801
8392	840801
8393	840801
8394	840801
8395	840801
8396	840801
8397	840801
8398	840801
8399	840801
8400	840801
8401	840801
8402	840801
8403	840801
8404	840801
8405	840801
8406	840801
8407	840801
8408	840801
8409	840801
8410	840801
8411	840801
8412	840801
8413	840801
8414	840801
8415	840801
8416	840801
8417	840801
8418	840801
8419	840801
8420	840801
8421	840801
8422	840801
8423	840801
8424	840801
8425	840801
8426	840801
8427	840802
8428	840802
8429	840801
8430	840802
8431	840802
8432	840802
8433	840802
8434	840802
8469	840712
8586	840713
8951	850717
8952	850717
8954	860823
8955	860823
8956	860823

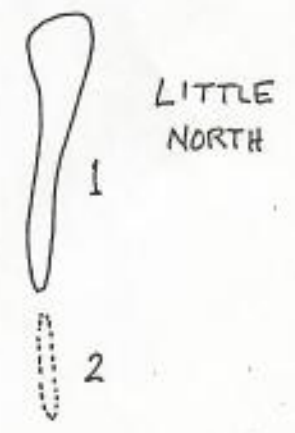
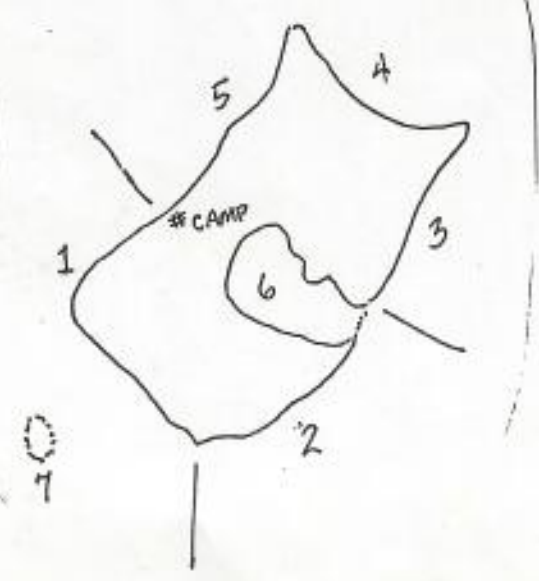
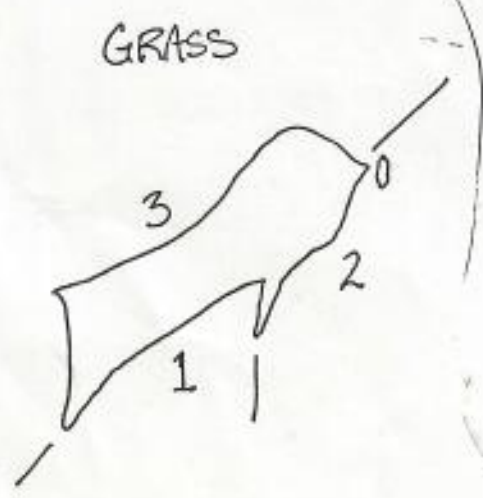
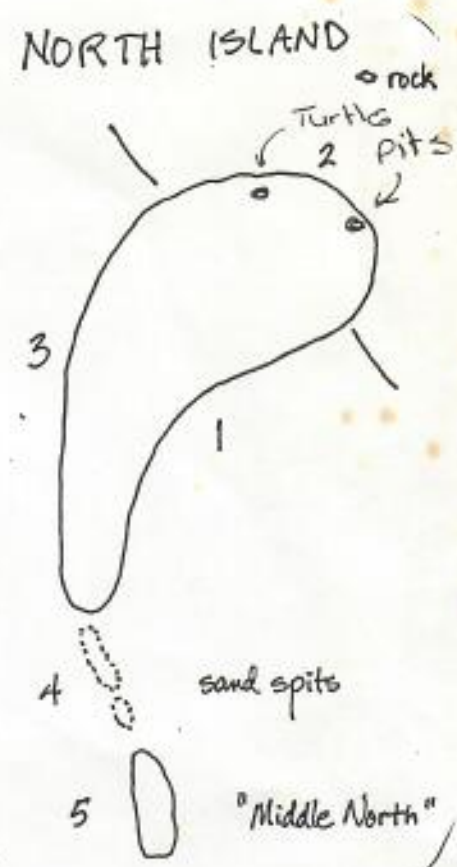
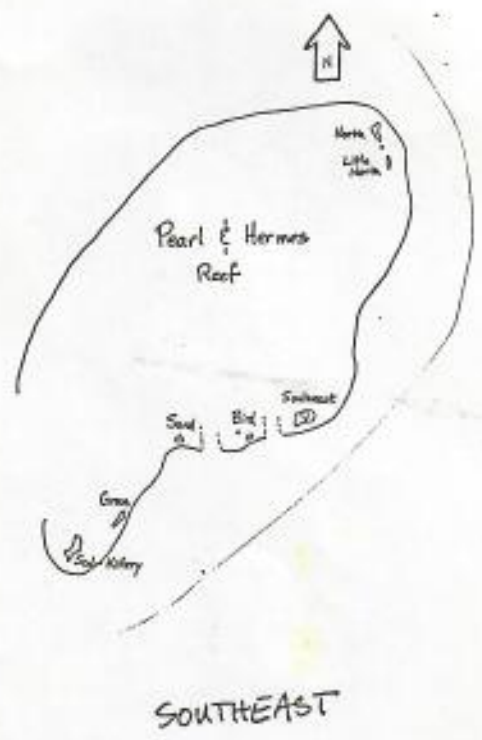
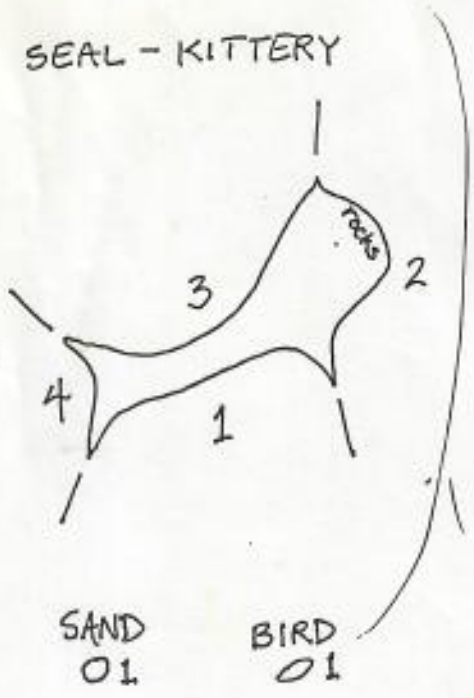
8957	860823
8958	860823
8959	860823
8960	860823
8961	860823
8963	860823
8964	860823
8965	860823
8966	860823
8967	860823
8968	860823
8969	860823
8970	860823
8971	860823
8972	860823
8973	860823
8974	860823
8975	860823
9001	880603
9002	880603
9003	880603
9004	880603
9005	880603
9006	880603
9007	880606
9008	880607
9009	880607
9010	880607
9011	880607
9012	880607
9013	880607
9014	880607
9015	880607
9016	880607
9017	880620
9018	880607
9019	880607
9020	880607
9021	880607
9022	880607
9023	880608
9026	870820
9027	870820
9028	870820
9029	870820
9033	880608
9034	880608
9035	880610
9036	880610
9037	880610
9038	880610
9039	880610
9040	880610
9041	880610
9042	880610
9043	880610

9044	880611
9045	880611
9046	880614
9047	880614
9048	880614
9049	880614
9050	880614
9051	850712
9052	850712
9053	850712
9055	850712
9056	850712
9057	850713
9058	850713
9059	850713
9080	850713
9061	850713
9062	850713
9063	850713
9064	850713
9065	850713
9066	850713
9067	850713
9068	850713
9069	850716
9070	850716
9071	850716
9072	850716
9074	850717
9075	850717
9076	850717
9077	850717
9078	850717
9079	850717
9080	850717
9081	850717
9082	850717
9083	850717
9084	850717
9085	850717
9086	850717
9126	880614
9127	880616
9128	880617
9129	880617
9130	880617
9131	880620
9132	880623
9134	880624
9135	880624
9136	880624
9137	880624
9138	880624
9139	880624
9140	880625
9141	880626

9142	880626
9143	880626
9144	880627
9145	880627
9146	880627
9147	880627
9148	880629
9149	880629
9150	880629

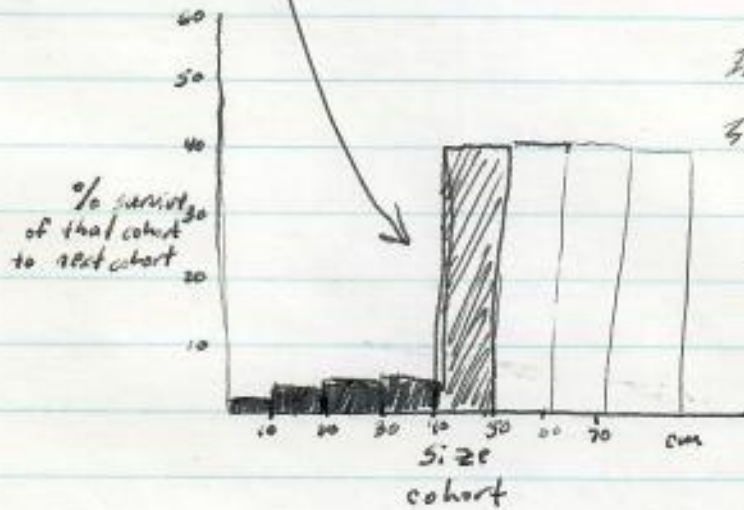
Turtle Nests on Pearl & Hermes Reef 1990

PEARL & HERMES REEF



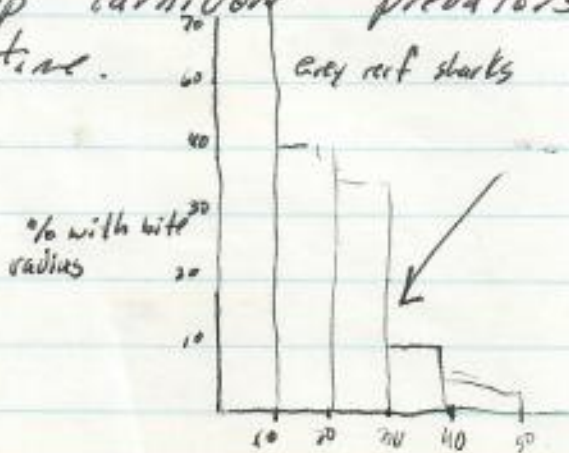
George.

In nature's strategy it is probably quite beneficial for a turtle to reach a certain size quickly and not much more beneficial to be bigger than that.

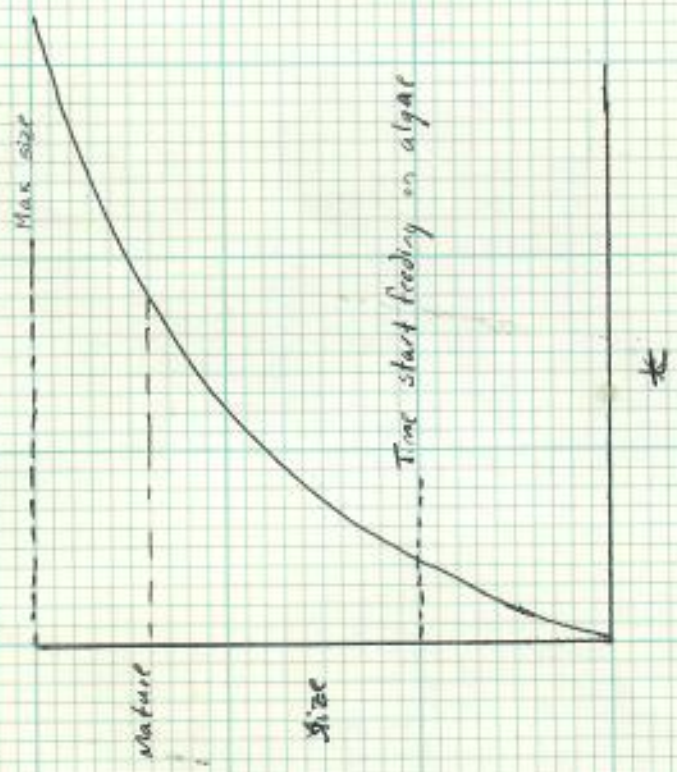


Graphs are illustrations
I'm hypothesizing I'm not
sure if things actually
look like this, but
maybe at least similar.

One would expect that size might correlate with mouth size of top carnivore predators say we look at one predator at a time. grey reef sharks It will be different with different species.



Most inshore predators don't have bite radii more than 40cm only the tigers and what percentage of the Tiger shark population has bite radius > 40cm. BKL



One would expect growth to slow once diet change occurs and then again once the turtle reaches maturity due to energy demands for reproduction.

Recently obtained data on the growth rates of immature green turtles at Pearl and Hermes Reef. (Carapace length: S = straight line and C = curved.)

Tag No.	Date tagged	Carapace length (cm)		Date resighted	Carapace length (cm)		Interval yr-mo	Carapace length (cm)/yr increase		Assuming uniform growth year-to-year Moteal
		S	C		S	C		S	C	
7093, 7094	6/30/83	40.0	42.9	6/14/88	43.5	--	5-0	0.7	--	67.8
7095, 7097	6/30/83	37.4	38.9	6/27/88	41.1	--	5-0	0.7	--	71.3
5570, 5571 7016	8/9/81	--	--	5/24/83 5/30/88	51.0 --	54.8 55.0	1-9 5-0	-- --	-- 0.04	--

Barry - I'll be using some of this info in staff meeting "highlights." GB

Barry
Please compute how much longer it might take for each of these three turtles to reach mean breeding size of 91cm.

George,

I think we should take some of those snails and feed them to manubking to see if ~~he~~ develops tumors. Since the tumors are relatively quick growing perhaps we will find out ~~that~~ the snails cause tumors. Of course we don't know how long the incubation period is. Well its a thought how evil.

B.M.

P.S. The lectures from the necropsies Friday turned to nothing

Recently obtained data on the growth rates of immature green turtles at Pearl and Hermes Reef. (Carapace length: S - straight line and C - curved.)

Tag No.	Date tagged	Carapace length (cm)		Date resighted	Carapace length (cm)		Interval yr-mo	Carapace length (cm)/yr increase	
		S	C		S	C		S	C
7093, 7094	6/30/83	40.0	42.9	6/14/88	43.5	--	5-0	0.7	--
7095, 7097	6/30/83	37.4	38.9	6/27/88	41.1	--	5-0	0.7	--
5570, 5571 7016	8/9/81	--	--	5/24/83 5/30/88	51.0 --	54.8 55.0	1-9 5-0	-- --	-- 0.04

NOAA, National Marine Fisheries Service
 SWFC Honolulu Laboratory F/SWC2
 2570 Dole Street
 Honolulu, HI 96822-2396

or tag recovered

Table 1.--Adult green turtles newly tagged at Laysan 3/30 → 3/30
 (dates)

Tag No.	Date	Location	Status ¹	Carapace length (cm) <u>Curved</u>
---------	------	----------	---------------------	---------------------------------------

Male

B. Becker W-3 (left) 4/14/89 Laysan sector 2 Basking 85.8
 Tort. has been emphysematous, also injury on rt. fore flipper where
 and tag may have been (resight)

Female

B. Becker 13076 4/14/89 Laysan sector 7 Basking - 93.5
 rt. fore flipper - unsure if clamped correctly
 has a golf-ball sized tumor on ventral left near "hump"
 B. Becker 13077 4/14/89 Laysan sector 8 Basking - 91.5
 (rt. fore flipper)
 B. Becker 6927 (left) - also rt tag present but twisted into flipper so couldn't read
 4/20/89 Laysan - sector 6 Basking

¹Basking, nesting, foraging, etc.