

689  
LEATHERBACK STRANDING  
WAIMANAWA

9

3/24/82 WEDNESDAY

123.5 cm length Plastron  
75.5 cm width (straight)  
137 cm carapace length



4.49' (54")

PHOTOS

2:45 pm Bridge just before  
Waiwano Beach Park  
(next beach past Shriners Beach?) at Kellon St

All 4 flippers chewed off - looks fresh.

Paul Chinen - 247-0807

Duane Alvarez - 247-3194

Robert Shackley

→ Brian Richard - 624-3632 [sat]

Photo & weight  
← 45-402 KOA  
KAMIKO  
K. Neote  
96744

I was told it was very lively -  
tried to "crawl" back into the  
water.

Transported on pallet in van to  
Kewalo Basin lab at ~ 5:30 pm

Chiswick had killed it by 2  
bang-stick shotguns in the head.

FIRST SEEN ~ 20' from shore

10. Leatherback (CONTINUED)

1982

Turn on lock, and plaster cut off -  
easy to cut - mostly cartilage

3-24-82

WED. Complete GI removed - large  
caecum(?) seen.

Remains of each front limb saved +  
remains of femurs.

Complete head.

Square section from plaster.

4 "plugs" from carapace.

♀ Ovaries present - very small  
eggs present. looks immature

9.10.82 G.



25 MARCH 82

GI TRACT OF 11  
LEATHERBACK

Murray Daily, Rod,  
Peaney and me

Esoph. to <sup>1st(?)</sup> Stomach 145 cm  
apparently  
→ valve

Stomach? blind sack loop  
may have valve

Granular  
pellets  
material  
gut

1st valve (crop) 35 cm

valve leads to fluid filled  
crop(?)

150 cm from above crop to change  
to smaller inst. seems to be  
another valve <sup>small ob</sup>

cellulose?

~~found~~ cutting backwards toward  
front from last tie

found; ~~plastic~~ <sup>name</sup> worm (?)  
no abnormalities discussed

<sup>2nd</sup> tie off point forward from back  
inside very ridged musculature  
highly ridged (increase surface area)  
another worm (?) found

~~found~~ <sup>3rd</sup>  
and  
larger portion of yellowish green  
material, somewhat like quite size

leather back and  
found dark flecks found in contents  
for first section cut. Murray took  
examples off to look at.

arr  
line

Contents up to this point  
put down drain

Second cutting began at near  
portion of crop(?)

Bag found in dissection determined  
to be part of the system -  
sack has stiff-looking mucosal  
lining

Esophagus starts just after  
sack

found in lower esophagus looks  
like food matter

A section of esophagus was cut  
to be saved

did not have a sphincter, supposed  
large pipuli serve purpose  
for freezing and photo

al.  
1/3  
C

the  
to

Section  
1  
very  
heavy  
and large



(small intestine) Measurement of Area #4  
 from <sup>start of</sup> ~~rec.~~ to Cecum 6.25 cm

mucosa greenish all way along  
 inner surface

Surface ~~has~~ <sup>is</sup> pitted ~~surface~~ which,  
 when pushed on secretes a mucous like  
 thick <sup>yellowish</sup> liquid, numerous holes  
 (mucus?)

about  
 1/3 way  
 down

changes to a more snake skin  
 appearance, no more secretion,  
 strange

begin  
 section  
 to make

Begin second cutting of little intestine  
 no food or parasite found, but very  
 heavy mucosal material yellowish  
 and thick. Does not have secretions  
 looks like snake skin up above  
 little intestine thrown out after  
 inspection

Section #5 the Cecum  
 pouch <sup>blind</sup> duodenum

spleen is attached  
 still frozen, ~~but~~ not good for worms  
 sp. value

Begin bill of <sup>mucus</sup> ~~butterscotch~~ tapping

14

Material notably degraded

found another piece of plastic (cellophane)

Section #6 <sup>105cm</sup> Some material from large intestine also found large numbers of small gelatinous bodies

Sect #7 rectum 25cm

Fig from Sect 7 put in towel pack

Also liquid from sect 6 mixed with water and decanted samples taken

found a few examples of what maybe food material in to packet # plus cellophane also found some rocks

Tom Hida - Pyrosoma

F&G Survey of MANUKA, et al. Haun 94636.5 H3A25

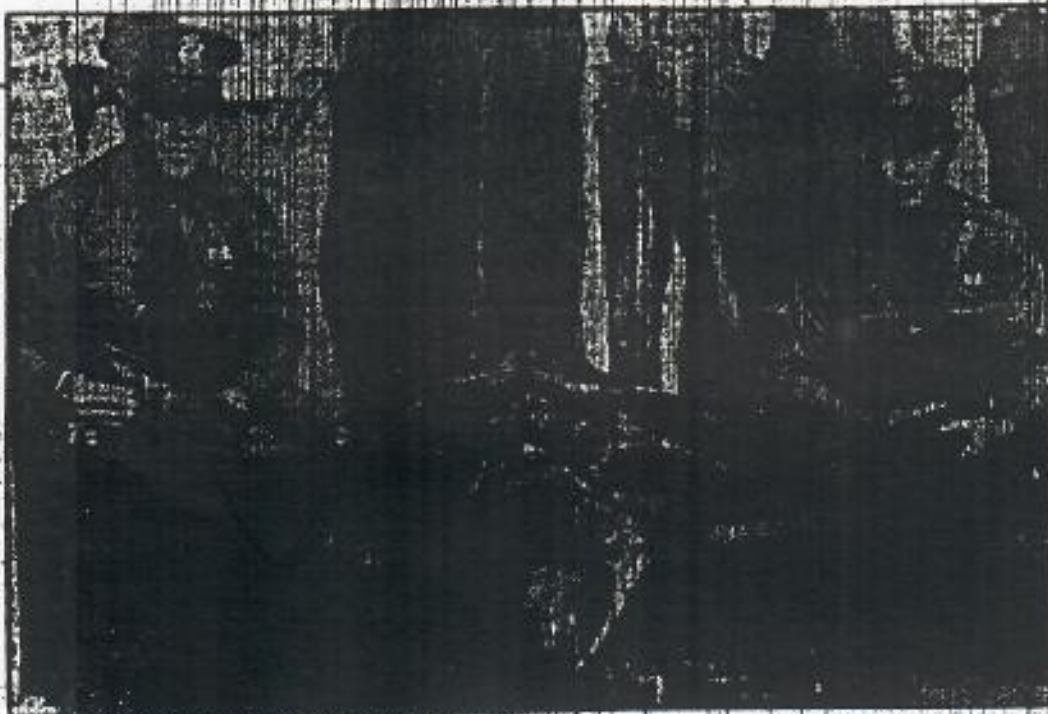
N. Ill. Univ. CECIL H. BROWN March 1981 J. Pol. Soc. Growth & development of folk zoological life-forms in Polynesian lagoon



1935 P.3

Page

### 445 POUND TURTLE CAUGHT BY SAMPAN



## GIANT TURTLE IS CUT OFF IN PRIME OF LIFE

### Fishermen End Maritime Career of Young 445 Pound Sphagis Coriacea

He weighs 445 pounds, but he's only half grown.

Yet fishermen gave the huge black trunk turtle, now at a fish market on Kekaunike St., no chance to reach his maturity.

The caught him about 12 miles off Kailua Friday, and now he has joined other "poor fish" in Honolulu.

He is not edible, however, according to Spencer Tinker, instructor of zoology at the University of Hawaii.

The turtle, whose scientific name is Sphagis Coriacea, is of an uncommon species not found anywhere in large numbers. They are located only in tropical and semi-tropical waters.

Largest of all marine turtles this species grows to 1,000 pounds.

The specimen in Honolulu was caught by fishermen of the sampan Fukiel. He is the largest ever to be seen in these waters.

## Crowd Greet New Orchestra

Al Rushen and his Royal Cardinals were welcomed by nearly 1,500 at the Alexander Young hotel roof garden Saturday.

Over 750 gathered there during the tea dance and nearly that number were present at the evening dance—the premiere performance of the new orchestra and entertainers after their arrival on the Malolo Thursday.

*On Point!*

A police officer on the left, never knew what's going to happen next. Officers Cardinal Thomas (left) and Jack Young today beside a market on Kekaunike St. stumbled across this giant turtle. Investigation showed that the crew of the sampan Fukiel caught the sluggish fellow 12 miles off Kailua on April 5. It took six of the crew to lift him out of the water and remove him from a line and hooks which he had feasted. The turtle, which died last night, topped the market scales at 445 pounds. Old fishermen at the market nodding wise heads today, declared they have never seen a turtle so big nor one of this black species.—Star-Bulletin photo.

## Election Laws Study Tonight

Senator W. H. Henry's judiciary committee will meet at 7:30 p. m. today to discuss with Arthur A. Greene, secretary of the territory, and City Clerk Ernest Beck, proposals to effect minor changes in the municipal and territorial election laws.

At the same time, Senator Henry Freitas' bill to set aside 50,000 acres in the Waianae district for a forest

## RACE PROBLEM DEBATED HERE

### Students Seek Amity In Relationships of Japanese and Caucasians

To bring out into the open and discuss truthfully Japanese-Caucasian

## Cousin Of The President Dies

(Associated Press by Wireless)

NEW YORK, April 8.—Warren Delano Robbins, 50, U. S. minister to Canada and a first cousin of President Roosevelt, died Sunday.

Watanabe, Bunji Higaki, Harue Matsunaga, Harue Sakata, Grace Yokoi, A. Goto, Ellen Teshima, Joyce Kawamoto, Tadashi Fukushima, Kimiyo Watanabe, Harue Tokutomi, Haruo Tani, Taro