

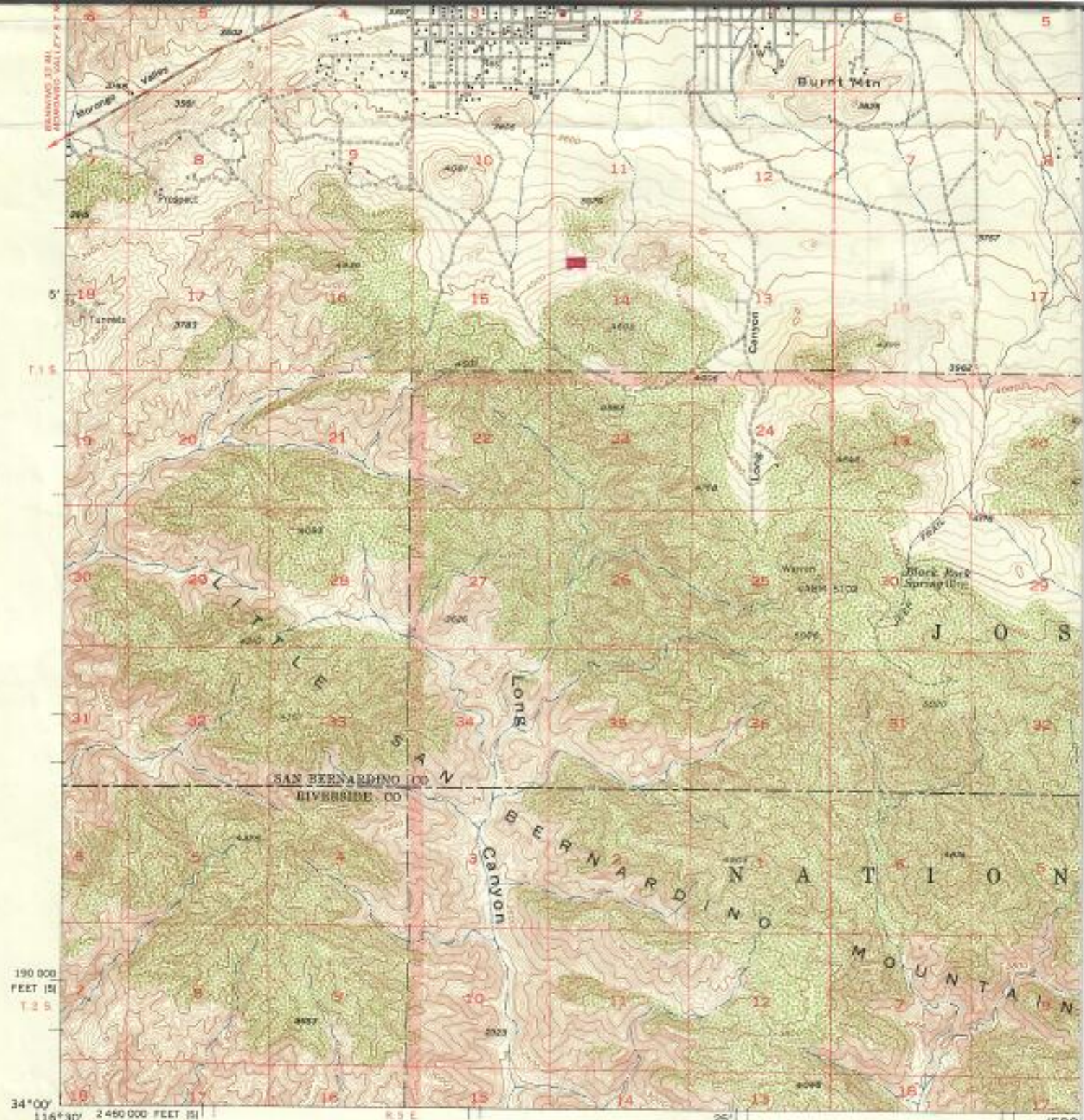
UNITED STATES  
DEPARTMENT OF THE INTERIOR  
GEOLOGICAL SURVEY



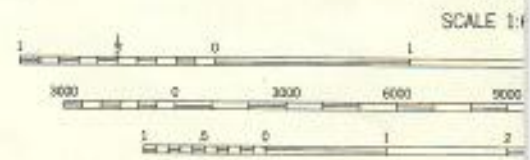








1:500,000  
 Mapped, edited, and published by the Geological Survey  
 Control by USGS, USC&GS, and USCE  
 Topography from aerial photographs by multiplex methods  
 and by planimetric surveys 1955. Aerial photographs taken 1952  
 Polyconic projection. 1927 North American datum  
 10,000-foot grids based on California coordinate system, zones 5 and 6  
 Unchecked elevations are shown in brown.



CONTOUR INTERVAL  
 DATUM IS MEAN

THIS MAP COMPLIES WITH NATIONAL  
 FOR SALE BY U. S. GEOLOGICAL SURVEY, DENVER  
 A FOLDER DESCRIBING TOPOGRAPHIC MAPS A





**GEORGE BALAZS JR.**  
**P.O. BOX 403**  
**YUCCA VALLEY, CALIF.**



QUADRANGLE LOCATION

**ROAD CLASSIFICATION**  
 Medium duty ——— Light-duty ———  
 Unimproved dirt - - - - -

**JOSHUA TREE, CALIF.**  
 N3400—W11615/15

1955

MAP ACCURACY STANDARDS  
 1 2, COLORADO OR WASHINGTON 25, D. C.  
 3 SYMBOLS IS AVAILABLE ON REQUEST

5'  
 11 S  
 12 S  
 670 000  
 FEET (6)  
 34°00'  
 116°15'

PRAYON WELL

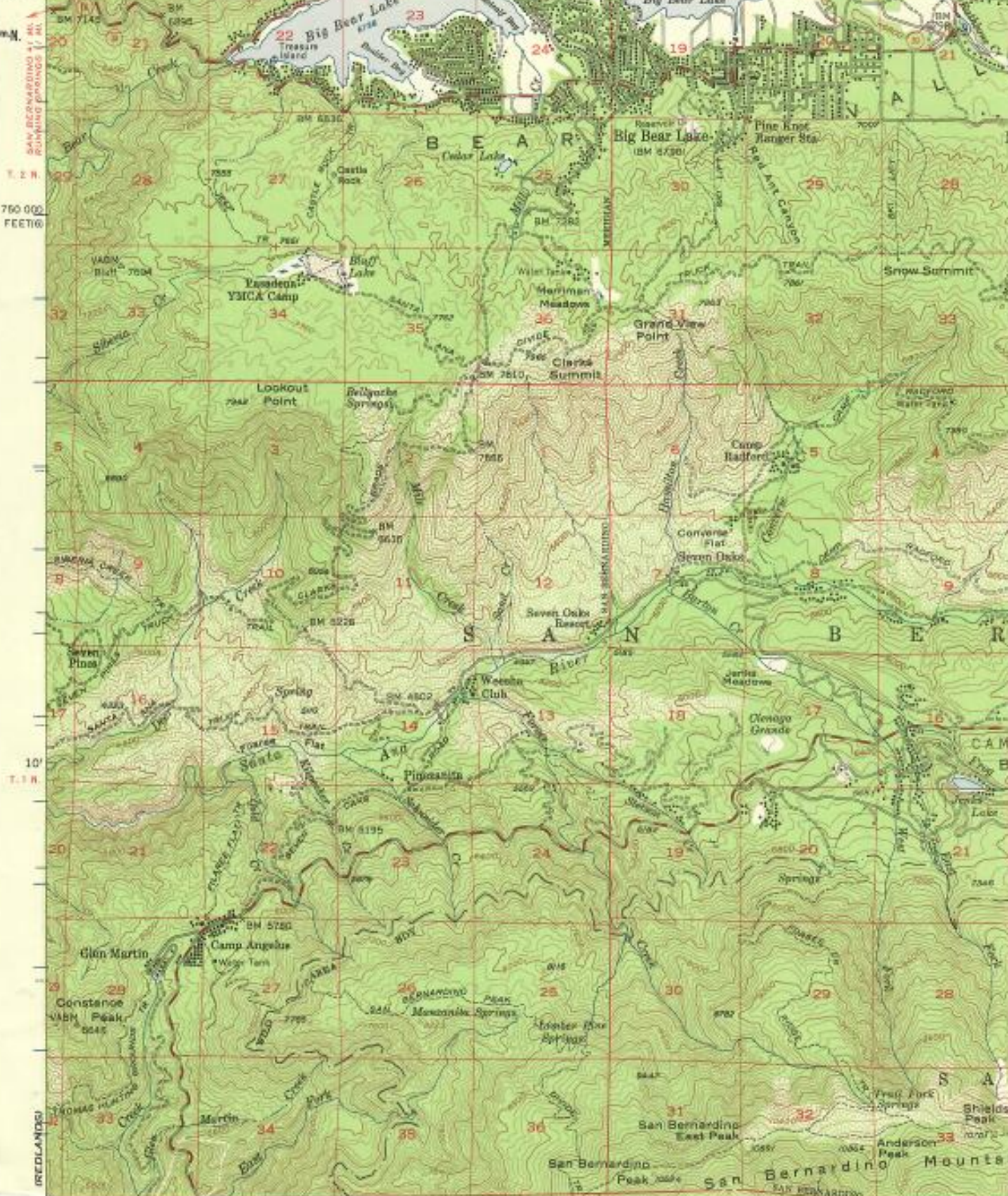
INTERIOR-GEOLOGICAL SURVEY, WASHINGTON, D. C.—1955-N3  
 NR 5716 R 7 E



(LAKE ARROWHEAD)  
SAN BERNARDINO 41 MI.  
RUNNING GROUNDS 1 MI.

UNITED STATES  
DEPARTMENT OF THE INTERIOR  
GEOLOGICAL SURVEY

117°00' 1780 000 FEET(6) (R. 1 W.) (18) VICTORVILLE 21 MI. FAWNOKW 2.5 MI. 55' VICTORVILLE 48 MI. BIG BEAR CITY 2.8 MI. T. 12 N.



34°15' 3780000 FEET(6)

10' T. 11 N.

ORELANDS

T. 12 N.

34°15'

3780000 FEET(6)

117°00'

1780 000 FEET(6)

(R. 1 W.)

(18)

VICTORVILLE 21 MI.

FAWNOKW 2.5 MI.

55'

VICTORVILLE 48 MI.

BIG BEAR CITY 2.8 MI.

T. 12 N.

34°15'

3780000 FEET(6)

117°00'

1780 000 FEET(6)

(R. 1 W.)

(18)

VICTORVILLE 21 MI.

FAWNOKW 2.5 MI.

55'

VICTORVILLE 48 MI.

BIG BEAR CITY 2.8 MI.

T. 12 N.

34°15'

3780000 FEET(6)

117°00'

1780 000 FEET(6)

(R. 1 W.)

(18)

VICTORVILLE 21 MI.

FAWNOKW 2.5 MI.

55'

VICTORVILLE 48 MI.

BIG BEAR CITY 2.8 MI.

T. 12 N.

34°15'

3780000 FEET(6)

117°00'

1780 000 FEET(6)

(R. 1 W.)

(18)

VICTORVILLE 21 MI.

FAWNOKW 2.5 MI.

55'

VICTORVILLE 48 MI.

BIG BEAR CITY 2.8 MI.

T. 12 N.

34°15'

3780000 FEET(6)

117°00'

1780 000 FEET(6)

(R. 1 W.)

(18)

VICTORVILLE 21 MI.

FAWNOKW 2.5 MI.

55'

VICTORVILLE 48 MI.

BIG BEAR CITY 2.8 MI.

T. 12 N.

34°15'

3780000 FEET(6)

117°00'

1780 000 FEET(6)

(R. 1 W.)

(18)

VICTORVILLE 21 MI.

FAWNOKW 2.5 MI.

55'

VICTORVILLE 48 MI.

BIG BEAR CITY 2.8 MI.

T. 12 N.

34°15'

3780000 FEET(6)

117°00'

1780 000 FEET(6)

(R. 1 W.)

(18)

VICTORVILLE 21 MI.

FAWNOKW 2.5 MI.

55'

VICTORVILLE 48 MI.

BIG BEAR CITY 2.8 MI.

T. 12 N.

34°15'

3780000 FEET(6)

117°00'

1780 000 FEET(6)

(R. 1 W.)

(18)

VICTORVILLE 21 MI.

FAWNOKW 2.5 MI.

55'

VICTORVILLE 48 MI.

BIG BEAR CITY 2.8 MI.

T. 12 N.

34°15'

3780000 FEET(6)

117°00'

1780 000 FEET(6)

(R. 1 W.)

(18)

VICTORVILLE 21 MI.

FAWNOKW 2.5 MI.

55'

VICTORVILLE 48 MI.

BIG BEAR CITY 2.8 MI.

T. 12 N.

34°15'

3780000 FEET(6)

117°00'

1780 000 FEET(6)

(R. 1 W.)

(18)

VICTORVILLE 21 MI.

FAWNOKW 2.5 MI.

55'

VICTORVILLE 48 MI.

BIG BEAR CITY 2.8 MI.

T. 12 N.

34°15'

3780000 FEET(6)

117°00'

1780 000 FEET(6)

(R. 1 W.)

(18)

VICTORVILLE 21 MI.

FAWNOKW 2.5 MI.

55'

VICTORVILLE 48 MI.

BIG BEAR CITY 2.8 MI.

T. 12 N.

34°15'

3780000 FEET(6)

117°00'

1780 000 FEET(6)

(R. 1 W.)

(18)

VICTORVILLE 21 MI.

FAWNOKW 2.5 MI.

55'

VICTORVILLE 48 MI.

BIG BEAR CITY 2.8 MI.

T. 12 N.

34°15'

3780000 FEET(6)

117°00'

1780 000 FEET(6)

(R. 1 W.)

(18)

VICTORVILLE 21 MI.

FAWNOKW 2.5 MI.

55'

VICTORVILLE 48 MI.

BIG BEAR CITY 2.8 MI.

T. 12 N.

34°15'

3780000 FEET(6)

117°00'

1780 000 FEET(6)

(R. 1 W.)

(18)

VICTORVILLE 21 MI.

FAWNOKW 2.5 MI.

55'

VICTORVILLE 48 MI.

BIG BEAR CITY 2.8 MI.

T. 12 N.

34°15'

3780000 FEET(6)

117°00'

1780 000 FEET(6)

(R. 1 W.)

(18)

VICTORVILLE 21 MI.

FAWNOKW 2.5 MI.

55'

VICTORVILLE 48 MI.

BIG BEAR CITY 2.8 MI.

T. 12 N.

34°15'

3780000 FEET(6)

117°00'

1780 000 FEET(6)

(R. 1 W.)

(18)

VICTORVILLE 21 MI.

FAWNOKW 2.5 MI.

55'

VICTORVILLE 48 MI.

BIG BEAR CITY 2.8 MI.

T. 12 N.

34°15'

3780000 FEET(6)

117°00'

1780 000 FEET(6)

(R. 1 W.)

(18)

VICTORVILLE 21 MI.

FAWNOKW 2.5 MI.

55'

VICTORVILLE 48 MI.

BIG BEAR CITY 2.8 MI.

T. 12 N.

34°15'

3780000 FEET(6)

117°00'

1780 000 FEET(6)

(R. 1 W.)

(18)

VICTORVILLE 21 MI.

FAWNOKW 2.5 MI.

55'

VICTORVILLE 48 MI.

BIG BEAR CITY 2.8 MI.

T. 12 N.

34°15'

3780000 FEET(6)

117°00'

1780 000 FEET(6)

(R. 1 W.)

(18)

VICTORVILLE 21 MI.

FAWNOKW 2.5 MI.

55'

VICTORVILLE 48 MI.

BIG BEAR CITY 2.8 MI.

T. 12 N.

34°15'

3780000 FEET(6)

117°00'

1780 000 FEET(6)

(R. 1 W.)

(18)

VICTORVILLE 21 MI.

FAWNOKW 2.5 MI.

55'

VICTORVILLE 48 MI.

BIG BEAR CITY 2.8 MI.

T. 12 N.

34°15'

3780000 FEET(6)

117°00'

1780 000 FEET(6)

(R. 1 W.)

(18)

VICTORVILLE 21 MI.

FAWNOKW 2.5 MI.

55'

VICTORVILLE 48 MI.

BIG BEAR CITY 2.8 MI.

T. 12 N.

34°15'

3780000 FEET(6)

117°00'

1780 000 FEET(6)

(R. 1 W.)

(18)

VICTORVILLE 21 MI.

FAWNOKW 2.5 MI.

55'

VICTORVILLE 48 MI.

BIG BEAR CITY 2.8 MI.

T. 12 N.

34°15'

3780000 FEET(6)

117°00'

1780 000 FEET(6)

(R. 1 W.)

(18)

VICTORVILLE 21 MI.

FAWNOKW 2.5 MI.

55'

VICTORVILLE 48 MI.

BIG BEAR CITY 2.8 MI.

T. 12 N.

34°15'

3780000 FEET(6)

117°00'

1780 000 FEET(6)

(R. 1 W.)

(18)

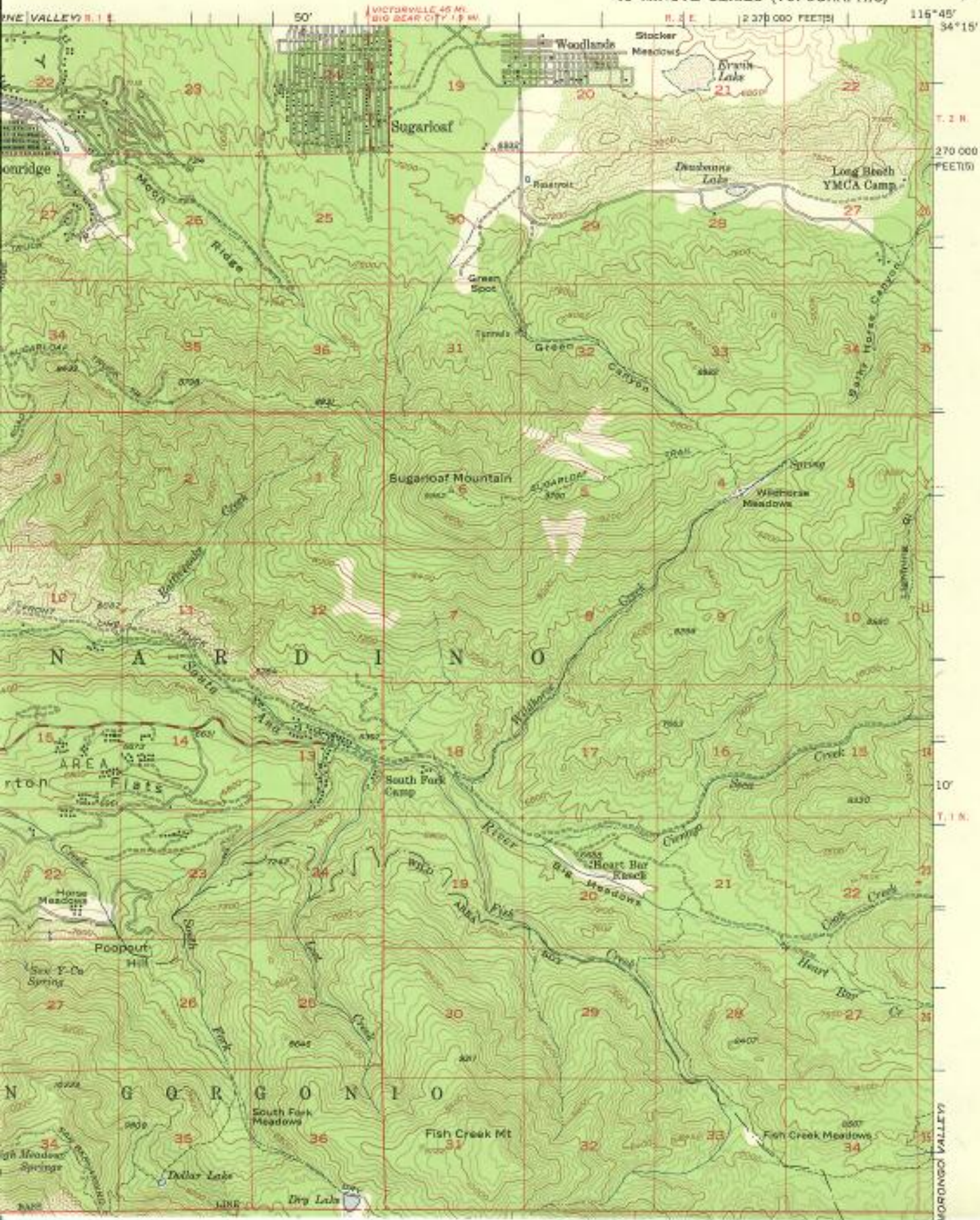
VICTORVILLE 21 MI.

FAWNOKW 2.

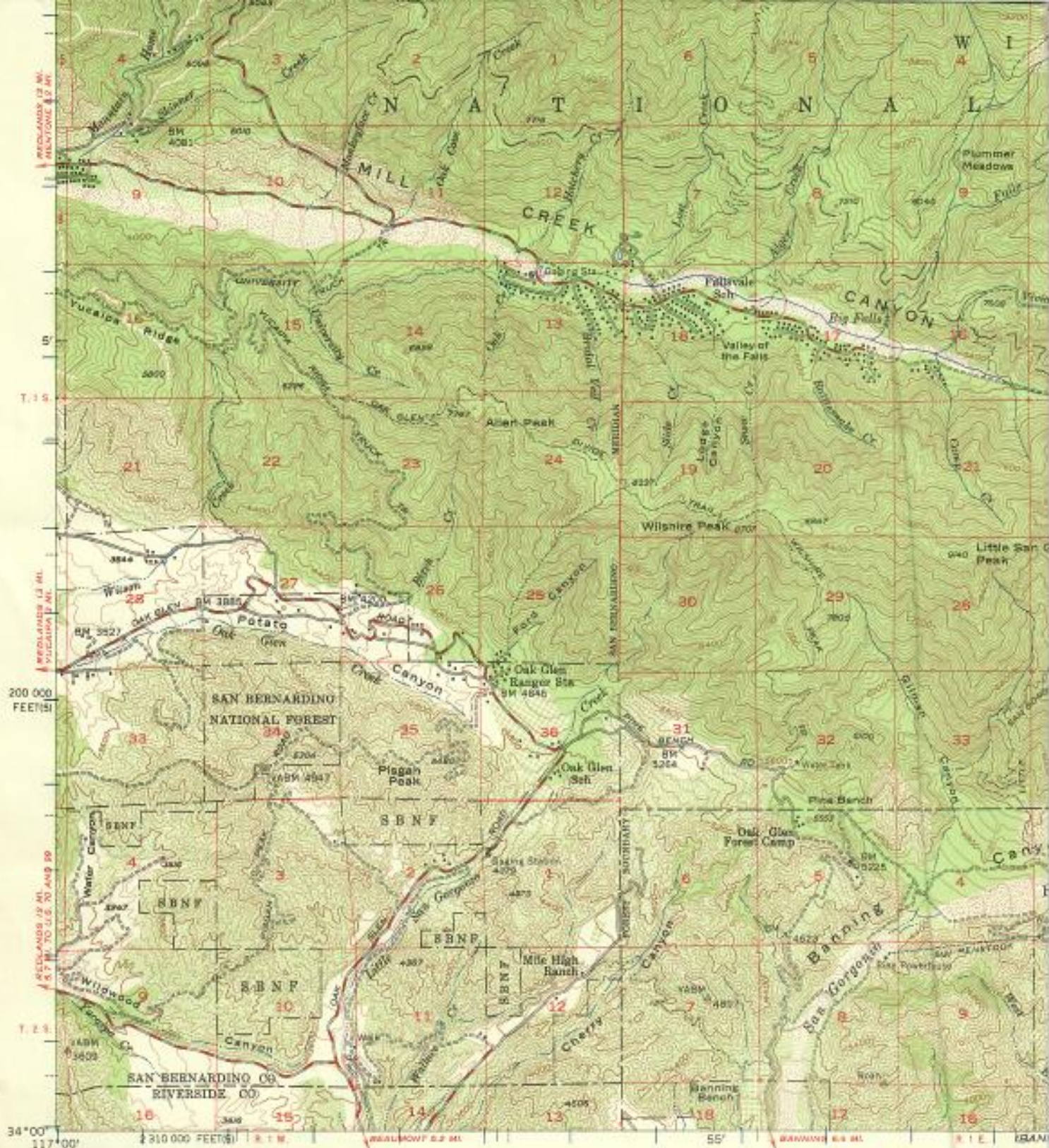


SAN GORGONIO MOUNTAIN QUADRANGLE  
CALIFORNIA  
15 MINUTE SERIES (TOPOGRAPHIC)

OLD WOMAN SPRINGS





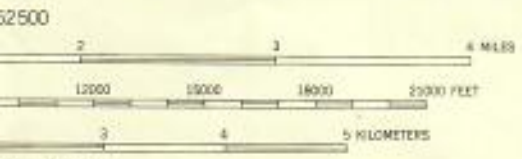


Mapped, edited, and published by the Geological Survey  
 Control by USGS, USC&GS, and USCE  
 Topography from aerial photographs by multiplex methods  
 Aerial photographs taken 1952. Field check 1954  
 Polyconic projection. 1927 North American datum  
 10,000-foot grids based on California coordinate system, zones 5 and 6  
 Dashed land lines indicate approximate locations  
 Unchecked elevations are shown in brown  
 1000-meter Universal Transverse Mercator grid ticks,  
 zone 11, shown in blue



THIS MAP COMPLIES WITH NATIONAL  
 FOR SALE BY U. S. GEOLOGICAL SURVEY, DENVER  
 A FOLDER DESCRIBING TOPOGRAPHIC MAPS

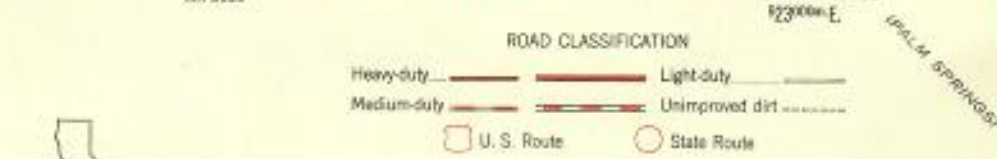




VAL 80 FEET  
SEA LEVEL

QUADRANGLE LOCATION

ALL MAP ACCURACY STANDARDS  
UNDER 2, COLORADO OR WASHINGTON 25, D. C.  
AND SYMBOLS IS AVAILABLE ON REQUEST



**SAN GORONIO MOUNTAIN, CALIF.**  
N3400—W11645/15  
1954



UNITED STATES  
DEPARTMENT OF THE INTERIOR  
GEOLOGICAL SURVEY

GLUCIERNE VALLEY

116°45'  
34°15'

R. 2 E

1 860 000 FEET (6)

BIG MEAN CITY 10 MI.

40' R. 3 E

OLD WOMAN

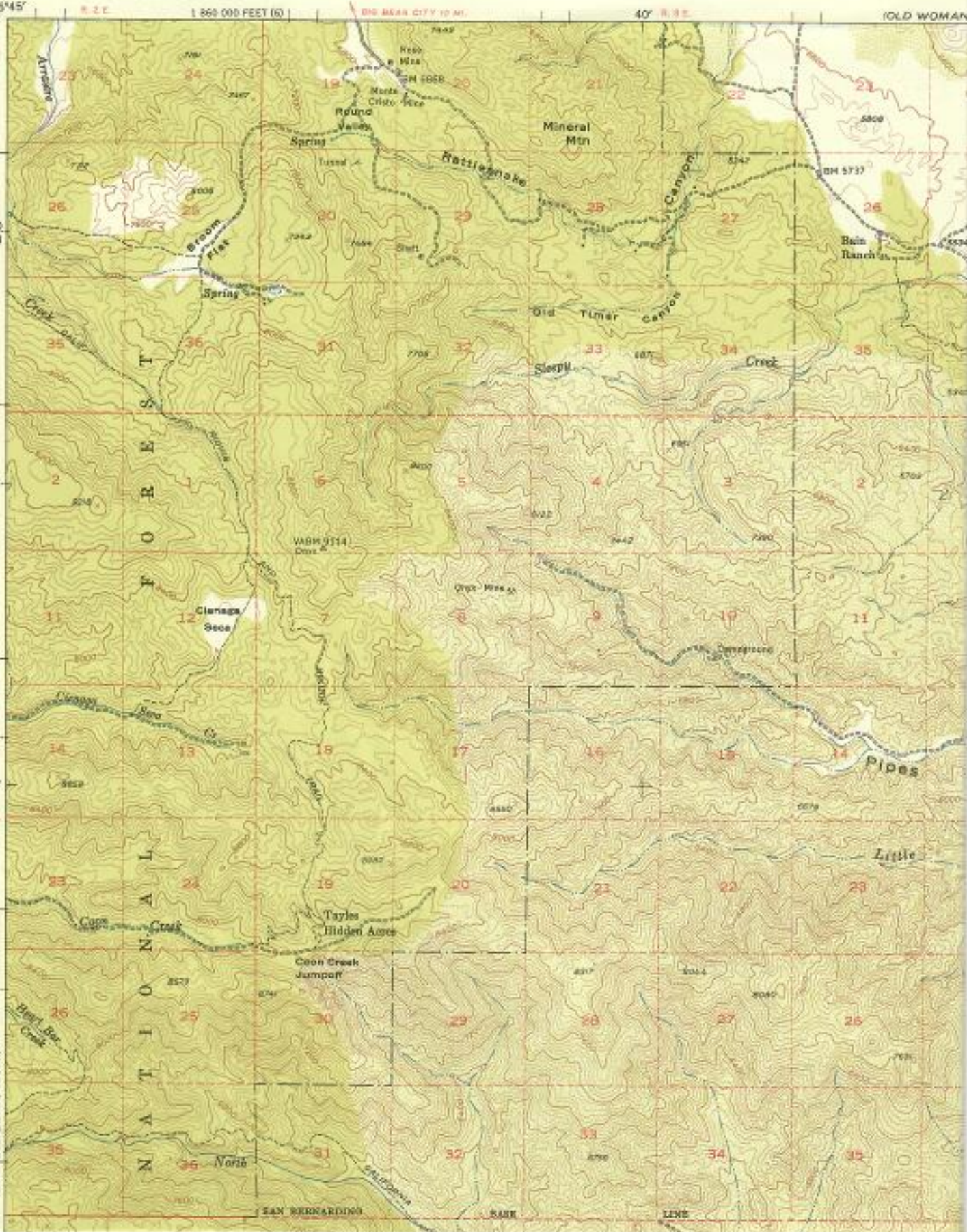
7.2 N

750 000  
FEET (6)

10'

T. 1 N

(SAN GABRIEL MTN.)



SAN BERNARDINO

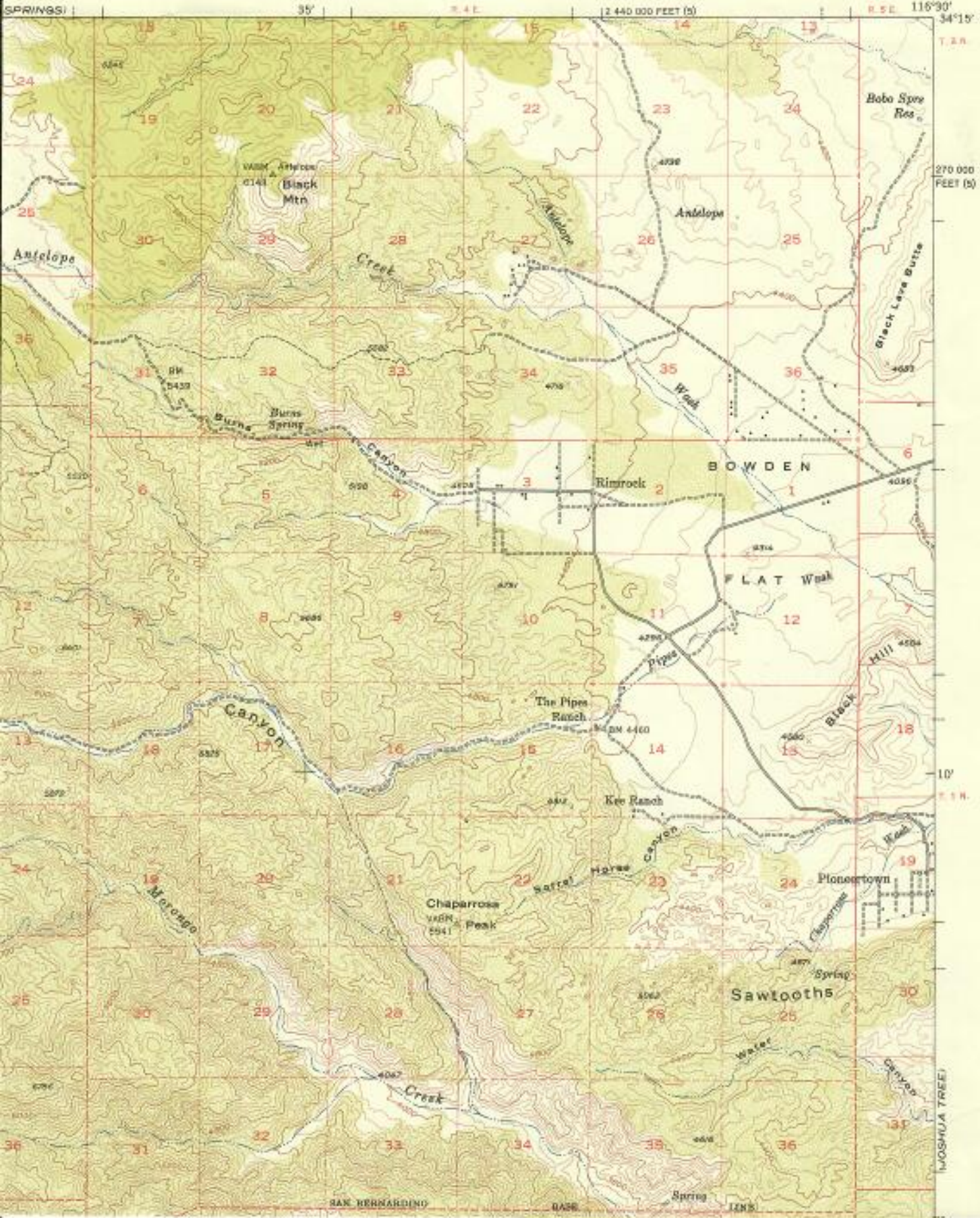
RANGE

LENS



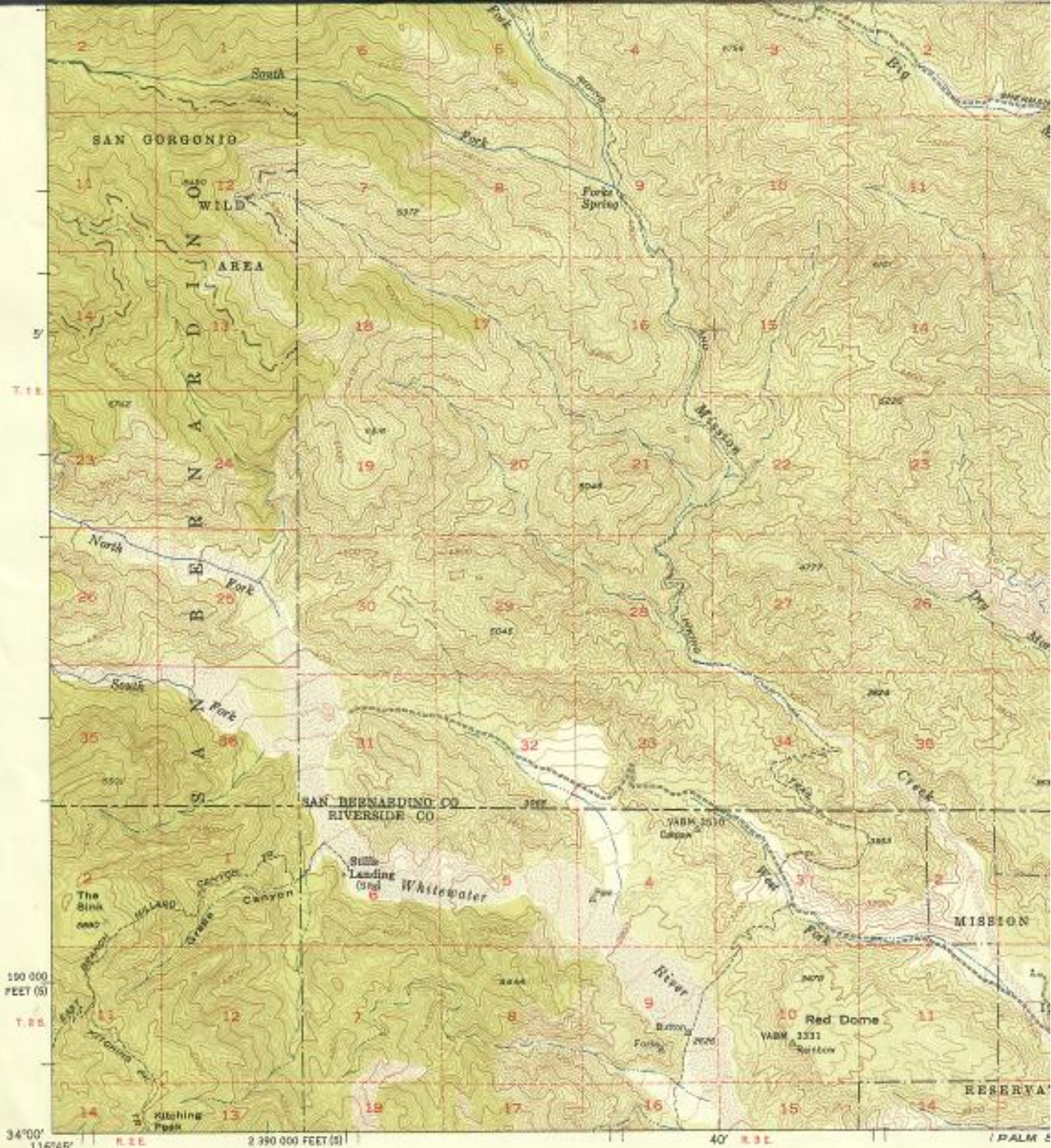
MORONGO VALLEY QUADRANGLE  
CALIFORNIA  
15 MINUTE SERIES (TOPOGRAPHIC)

EMERSON LAKE

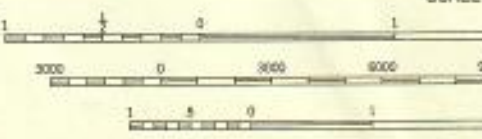


YOSHUA TREE



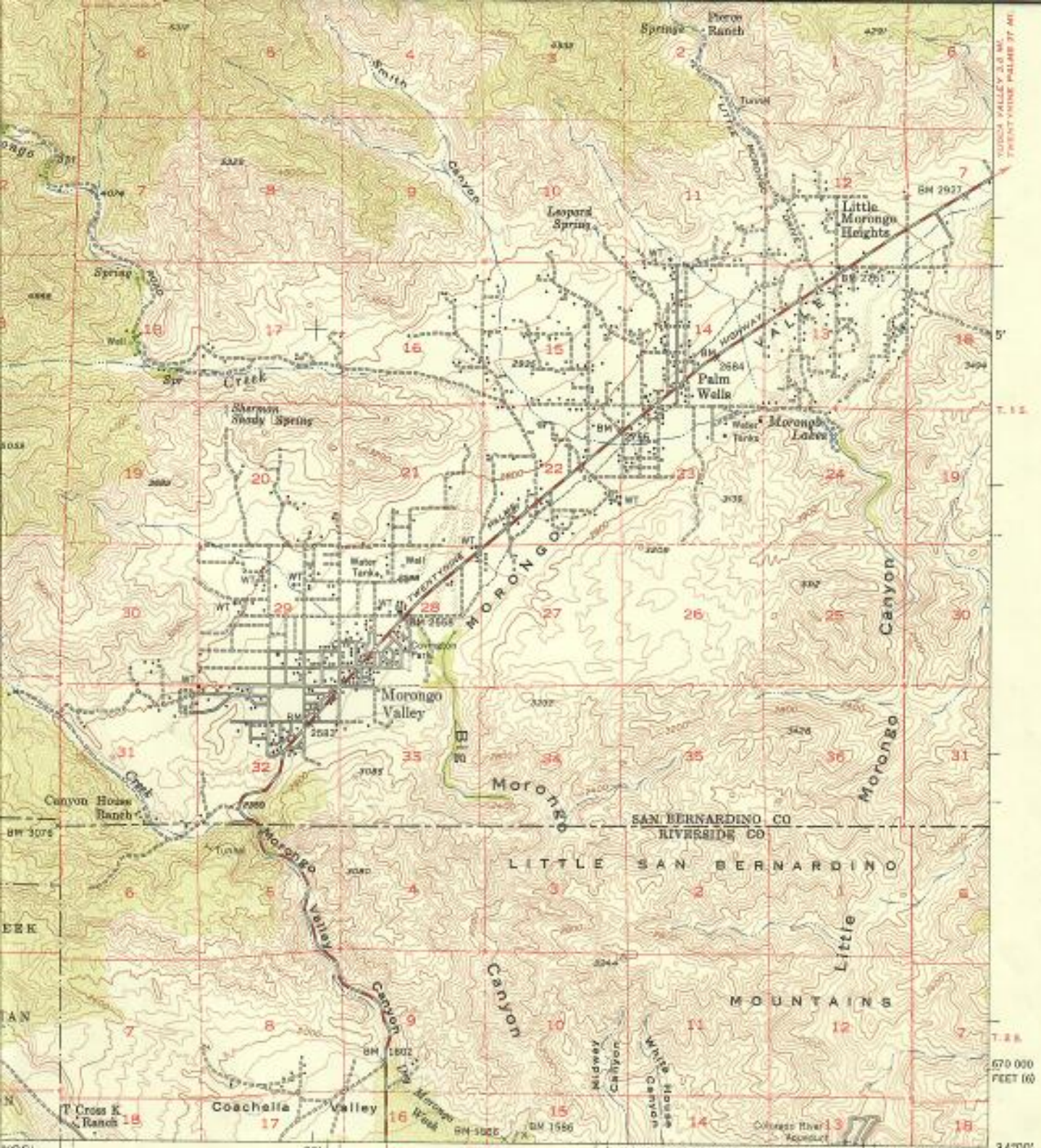


Mapped, edited, and published by the Geological Survey  
 Control by USGS, USC&GS, and USCE  
 Topography from aerial photographs by multiple methods  
 Aerial photographs taken 1952. Field check 1955  
 Polyconic projection. 1927 North American datum  
 10,000-foot grids based on California coordinate system,  
 zones 5 and 6  
 Dashed land lines indicate approximate locations

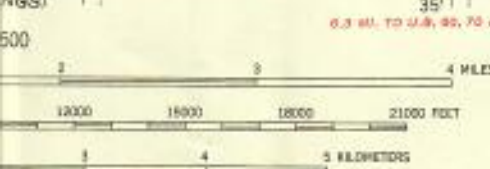


CONTOUR INTERVAL IS METERS  
 THIS MAP COMPLIES WITH NATK  
 FOR SALE BY U. S. GEOLOGICAL SURVEY, DEP  
 A FOLDER DESCRIBING TOPOGRAPHIC MAP





MORONGO VALLEY 3.0 M. TWENTY-TWO PALMS 97 M.



**ROAD CLASSIFICATION**

Heavy-duty	Light-duty
Medium-duty	Unimproved dirt
U. S. Route	State Route

**MORONGO VALLEY, CALIF.**  
N3400-W11630/15

1955

MAP ACCURACY STANDARDS  
2, COLORADO OR WASHINGTON 25, D. C.  
SYMBOLS IS AVAILABLE ON REQUEST

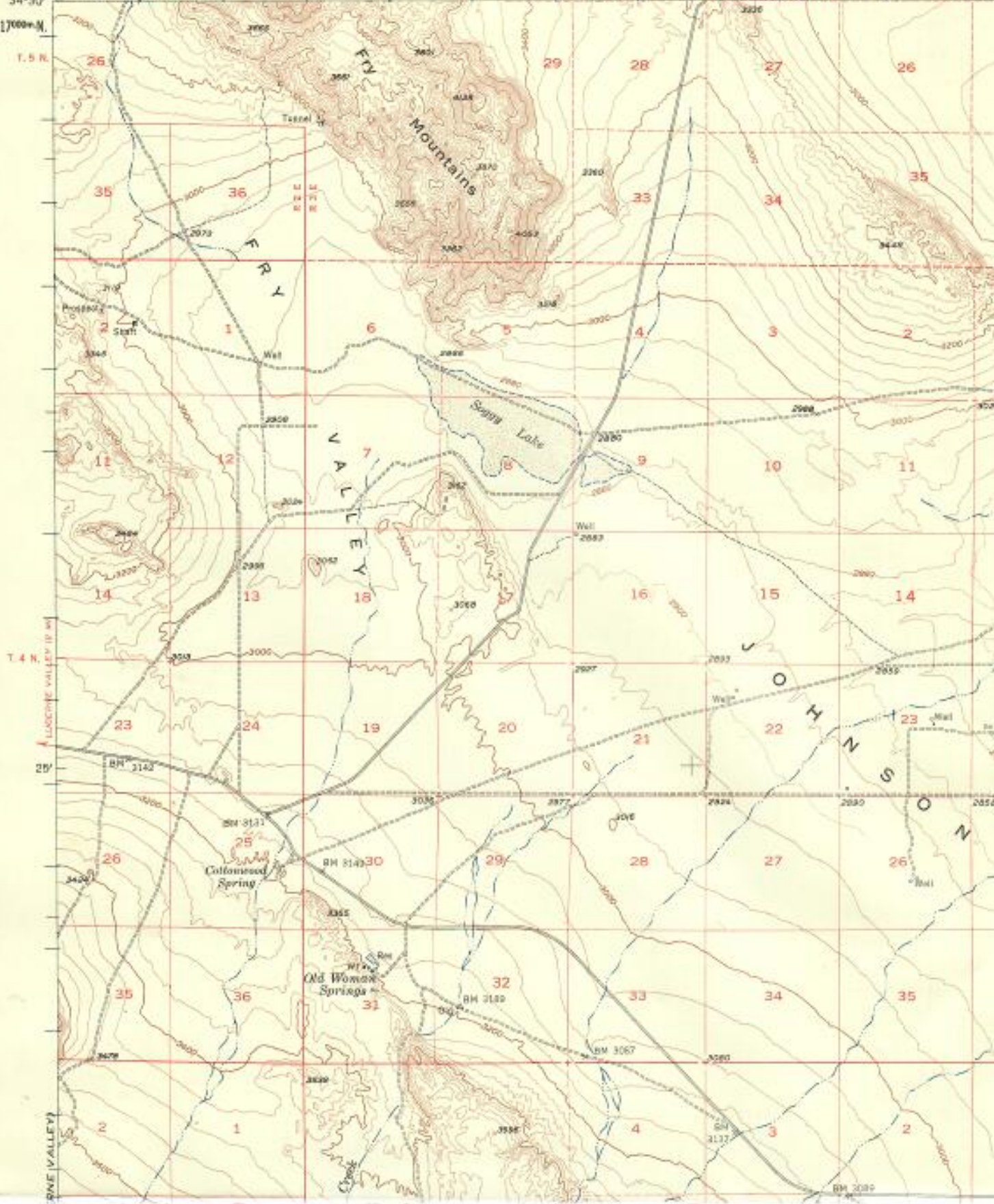


LORD MOUNTAINS

UNITED STATES  
DEPARTMENT OF THE INTERIOR  
GEOLOGICAL SURVEY

STATE OF  
GOODWIN J. KN  
FRANK B. DURKEE, DIR  
HARVEY O. BANK

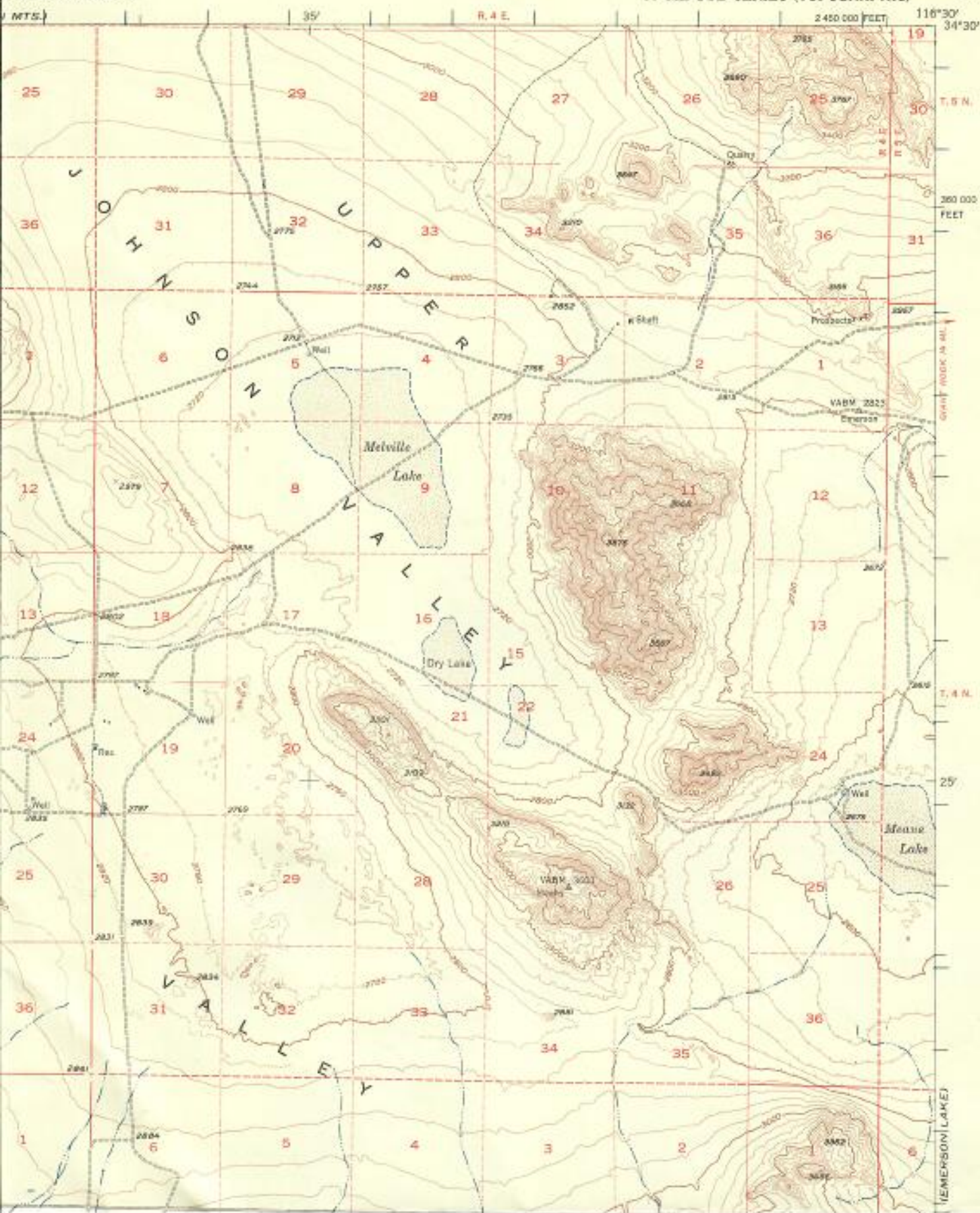
116°45' 52.0000"E R. 2 E. R. 3 E. 40' BRASSMAN ROAD R. 3 AL. 0702M.



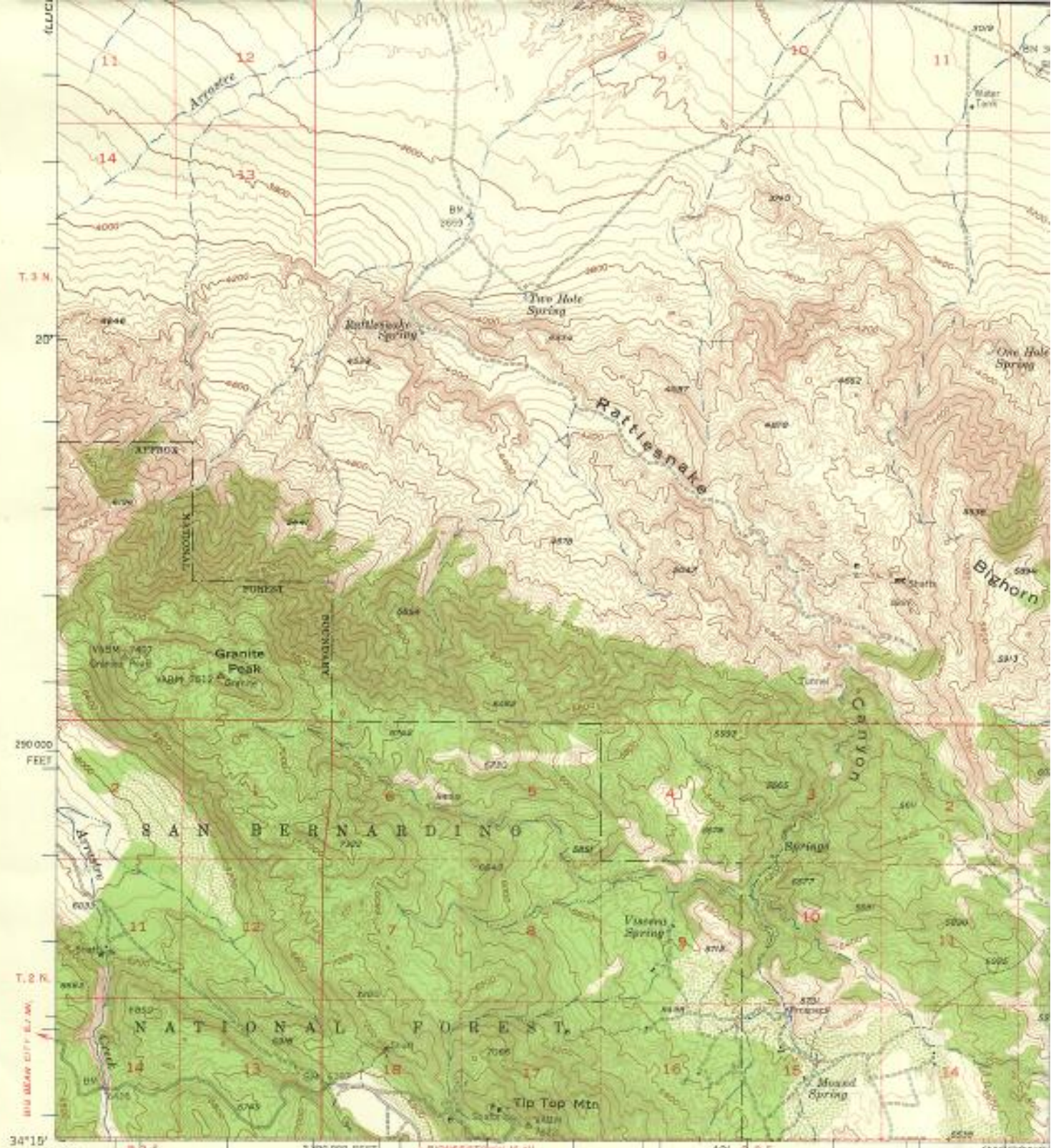
DAVE VALLEY



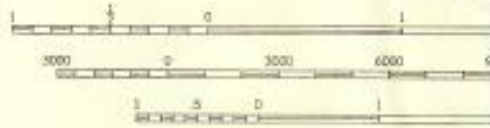
(LAVIC)







Mapped, edited, and published by the Geological Survey  
 Control by USGS, USCSGS, and USCE  
 Topography from aerial photographs by photogrammetric methods  
 Aerial photographs taken 1952. Field check 1955  
 Polyconic projection. 1927 North American datum  
 10,000-foot grid based on California coordinate system, zone 5  
 Dashed land lines indicate approximate locations  
 1000-meter Universal Transverse Mercator grid ticks,  
 zone 11, shown in blue

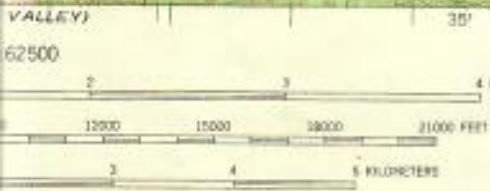


CONTOUR INTERVAL  
 DASHED LINES REPRESENT  
 DATUM IS NOT SHOWN

THIS MAP COMPLIES WITH NATIONAL MAP ACT  
 FOR SALE BY U. S. GEOLOGICAL SURVEY, DEPARTMENT OF THE INTERIOR  
 A FOLDER DESCRIBING TOPOGRAPHIC MAPS

BLANK BORDERS AND MOUNTAIN





VALLEY)  
62500  
VERTICAL 40 FEET  
HORIZONTAL 20-FOOT CONTOURS  
IN SEA LEVEL  
NATIONAL MAP ACCURACY STANDARDS  
SERIES 2, COLORADO OR WASHINGTON 25, D. C.  
AND SYMBOLS IS AVAILABLE ON REQUEST



QUADRANGLE LOCATION

ROAD CLASSIFICATION

Heavy-duty	Light-duty
Medium-duty	Unimproved dirt
U. S. Route	State Route

OLD WOMAN SPRINGS, CALIF.  
N 3416—W 11630/15  
1965

WOSHUA TREES



J. R. D.

SAVE!

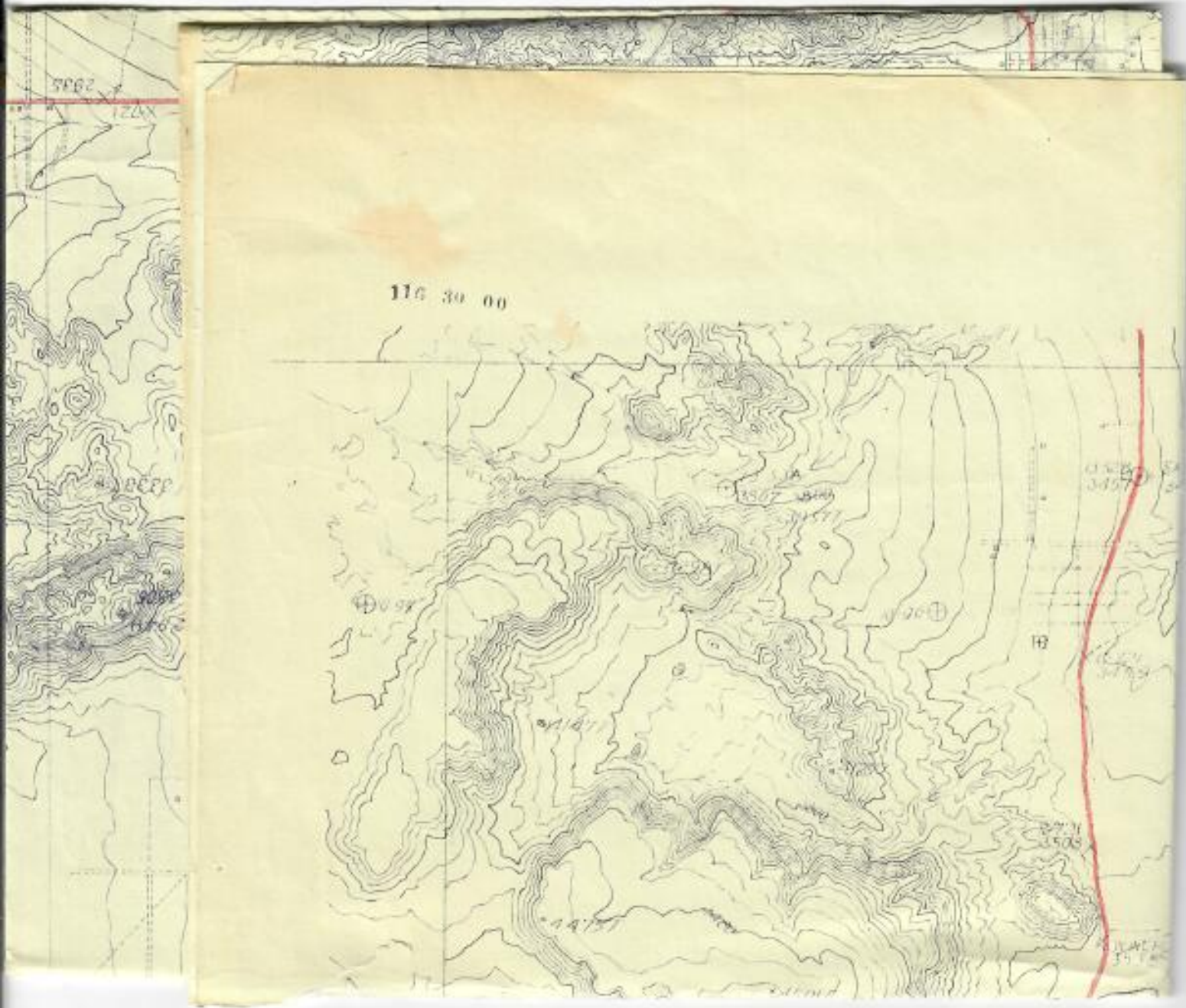
DESERT MAPS PAPERS

OF  
SAVE! AREA.





116 30 00



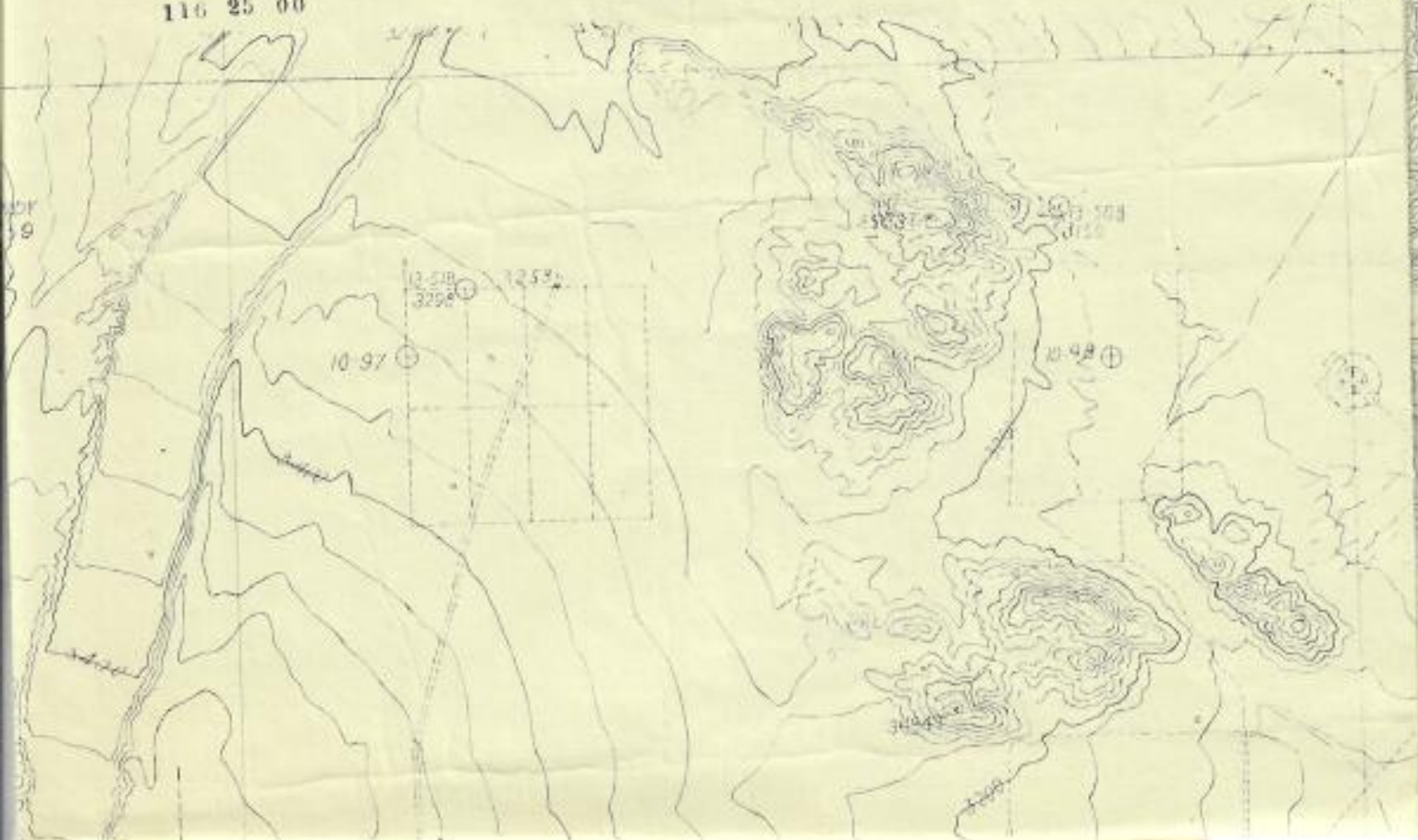


BEFORE FIELD COMPLETION

1947  
This is a copy of a U. S. Geological Survey  
manuscript compiled by photogrammetric methods.  
It does not include information to be added  
during field completion surveys.

116 25 00

117 20 00



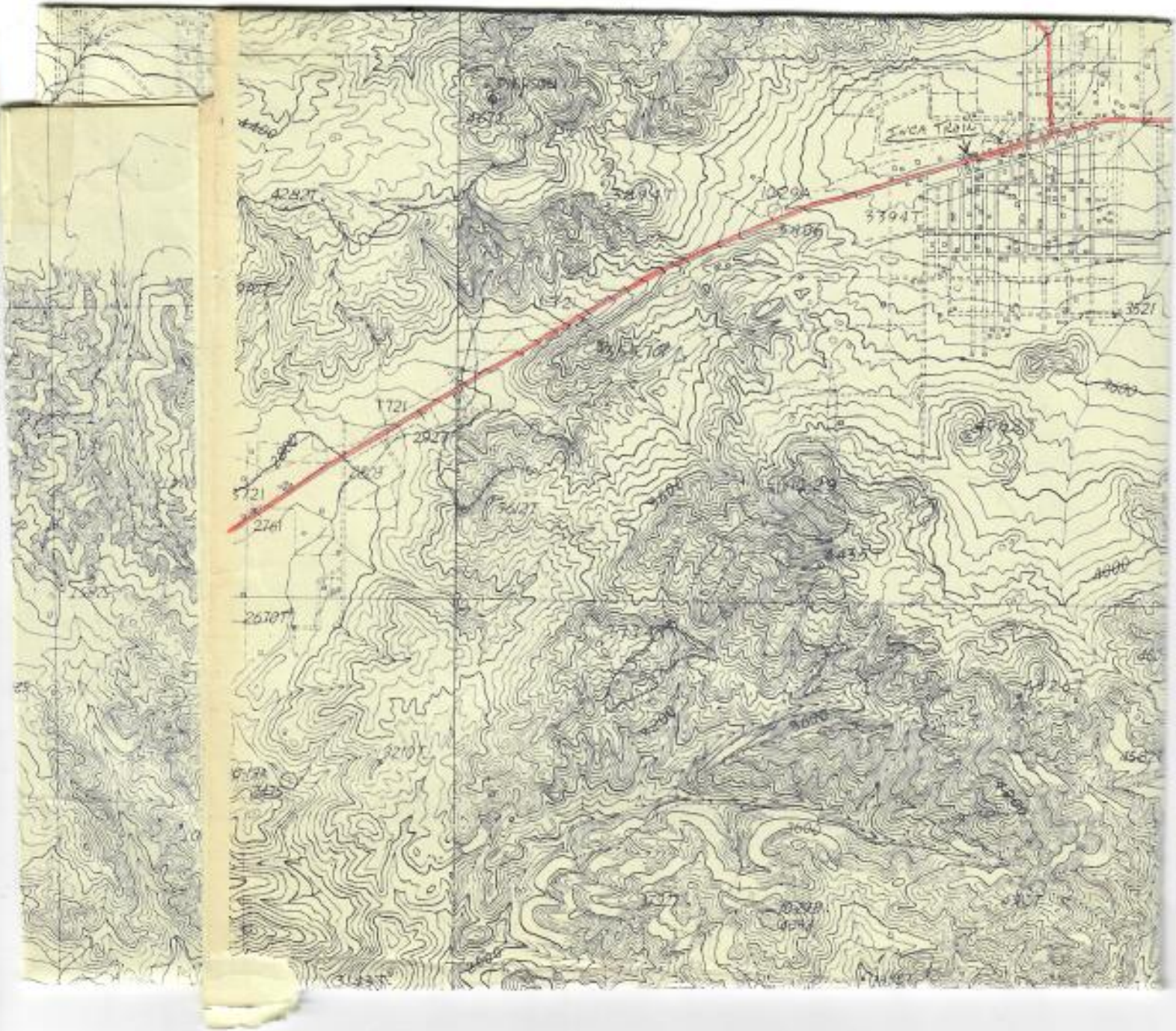




























548  
211

3200

3000

3527T

3547T

10-20

3508T

⊕10-25

4173T

1-2

4295T

1-2A  
4514

15105A  
2079

3302T







any man-  
ods.  
obtained

# WARRENS WELL, CALIF.

N. 34° 00' - W. 116° 15' / 15'

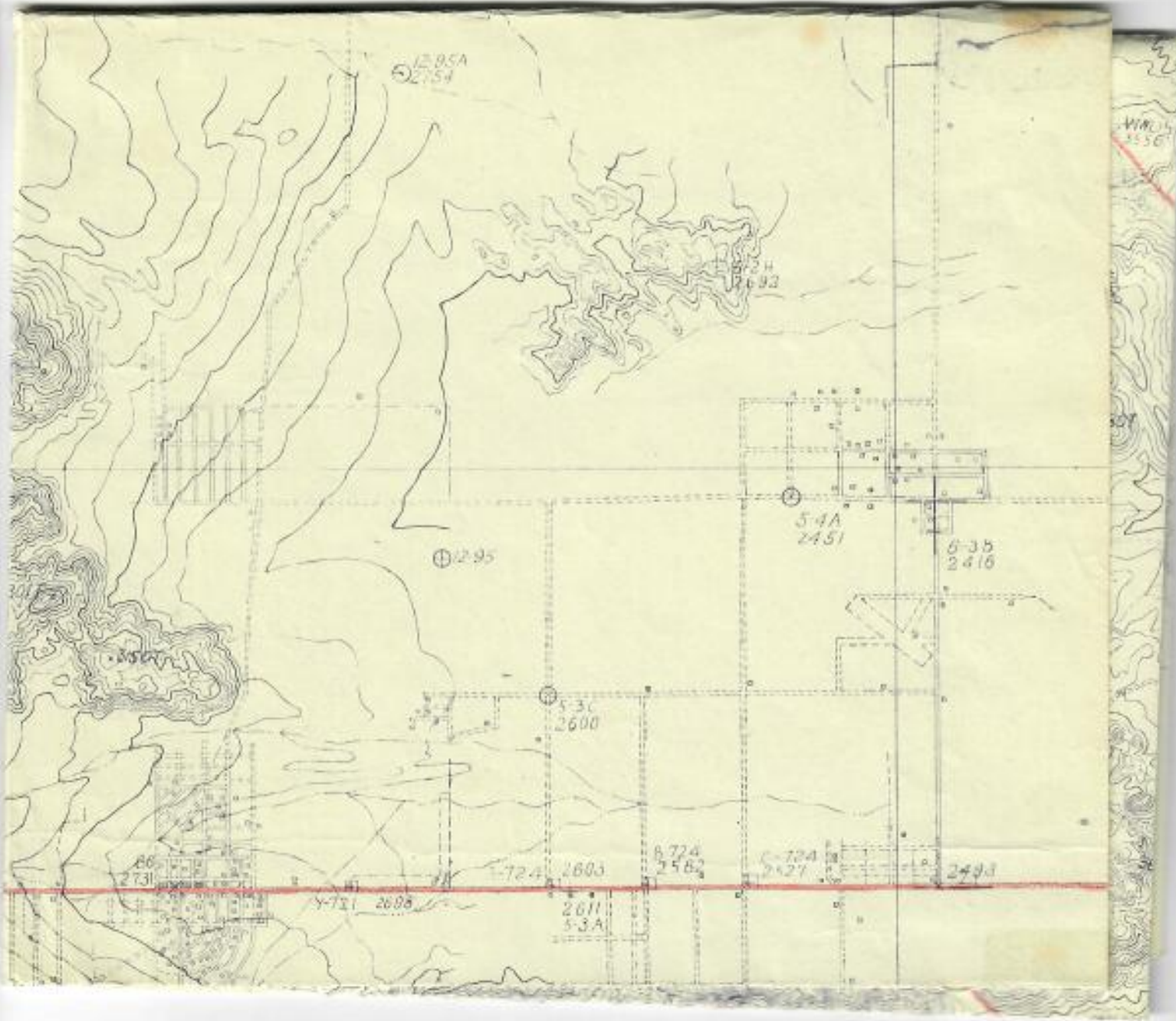
Scale - 1: 48,000 C.I. - 40'

1950

GEORGE BALAZS JR.









RD  
GAVE!  
DESERT MAPS PAPERS OF  
GAVE! AREA.

WARRENS WELL, CALIF.

N. 34 00' - W. 116° 15' / 15'

Scale - 1" = 48,000' C.I. - 40'

1950

GEORGE BALAZS JR.

11° 15' 00"

11° 15' 00"

SEALED  
BY MAIL  
REGISTERED MAIL