



THE PINEAPPLE POST OF HAWAII

A Priced and Illustrated Catalogue of the Postage stamps, souvenir sheets and postal stationery issued by the Pineapple Post of Honolulu, Hawaii, from its commencement on June 11, 1977, to its closure after the final issue of November 29, 1987.



REVIEW PUBLICATIONS PTY. LTD.

1 Sterling Street, Dubbo, New South Wales, Australia, 2830

AN HISTORICAL FOOTNOTE

BY BILL HORNADGE



From the mid-nineteenth century to the 1880's private postal delivery services proliferated in the United States, particularly in the New York area, each issuing their own "local" stamps and operating openly in competition with each other and with the U.S. Post Office. The Post Office eventually declared war on these private posts and by the 1880's had succeeded in suppressing them.

For the next 70 years the Post Office enjoyed its monopoly without interruption. In 1953 a prominent U.S. dealer and philatelic author, Herman ("Pat") Herst Jr, then living at Shrub Oak, New York, discovered a loophole in the postal laws relating to private posts. He found that it was not illegal to conduct such operations, and issue local stamps for them. In areas where the Post Office did not operate a service!

He promptly established the Shrub Oak (N.Y.) Local Post operating between his home and the local Post Office, and proceeded to issue a 2c triangle shaped "local" stamp featuring three oak trees for affixing to mail carried on his service, the first of the modern U.S. Locals. Pat affixed one of these "Locals" to all his outward mail (in addition to the normal U.S. postage required for onward transmission once they were posted into the mail system) and being an experienced writer, gained widespread publicity for his new venture.

In no time at all, of course, he also attracted a whole crop of rivals. Local Posts sprang up all over the United States in the next few years, offering a lot of new interest to the Cinderella collecting scene. But the vast majority of these new local delivery services quickly withered on the vine when hopeful entrepreneurs discovered that running such an enterprise involved a fair amount of work with few financial returns. The ones that survived did so because their owners used them to promote their other philatelic activities - or, in some cases, their local communities to the outside world.

Most of the modern mainland Local Posts had expired by 1977 when a new entrant appeared on the scene in the far off island state of Hawaii.

This venture, The Pineapple Post, was the brainchild of a Honolulu philatelist and Public Relations expert Craig Miyamoto. Initially the stamps introduced for the service were produced as



a novelty item, something to "dress up" outgoing envelopes on Craig's commercial and personal mail. Stories in the philatelic press quickly changed that as the publicity brought in a flood of requests from collectors around the world for these new "Locals".

Craig Miyamoto was quick to appreciate that there was a considerable demand for the stamps and he threw himself into a venture that lasted for more than a decade, issuing a series of stamps that would promote the history of Hawaii and its tourist attractions around the world.

Officially the Pineapple Post operated from the upper Makiki residential area to the Makiki Post Office which itself is a unique postal institution as it is located beneath a modern elevated multi-laned freeway (the "Lunalili Freeway" or as it is more commonly referred to, the H-1 Freeway). The Post Office bears the ZIP Code 96822.

In the next ten years thousands of these Pineapple Post stamps, with historic Hawaiian designs were affixed to envelopes which found their way to almost every corner of the globe, creating much favourable publicity for the island.

But at the end of 1987, after more than a decade of service, Craig Miyamoto found the Pineapple Post was becoming too much of a burden on his business activities. He called it a day and closed it down with the Postal Stationery envelope issue of November 29, 1987 - the 42nd issue of the Service.

In the decade of its operation The Pineapple Post had issued a total of 36 single stamps, five souvenir sheets and two postal stationery envelopes.

Throughout its decade of service I had regularly mentioned the stamps of the Pineapple Post in my monthly CINDERELLA CORNER of "Stamp News" and had met Craig Miyamoto on one of my many stopovers in Honolulu.

In 1990 I was active again in the Cinderella field and, as I would be passing through Honolulu on my way home from a visit to the UK, I dropped Craig Miyamoto a note asking whether he had any remnant stock of the Pineapple Post he might care to sell as I thought that such material would fit nicely into the series of Price Lists I was planning.

While I was in U.K. I had a prompt reply from Craig advising that he had a fair sized remainder stock of the stamps, sheets, stationery, first day covers, plus some imperforates and proof sheets. He wanted to sell the lot intact and mentioned a price.

My first (and admittedly, second, third and fourth) reaction was that this would be biting off far more than I could chew. I had been contemplating stocking only a few of the Pineapple Post stamps and here I was being offered a mass of material.

On the way home, in September 1990, I met with Craig in Honolulu and had a long discussion on the possibility of buying only a segment of the stock. We didn't reach agreement then, but I did a lot more homework when I returned and finally reached the conclusion that whoever bought it would need to take the entire holding to be able to produce a priced catalogue of the complete Pineapple Post range of philatelic items - with all the background information.

I took the plunge and early in 1991 received the stock from Craig and commenced the fairly daunting task of sorting it all and of producing this - the only COMPLETE illustrated and priced catalogue of all the issues of a remarkable philatelic enterprise - THE PINEAPPLE POST of Hawaii (1977-87).

THE PINEAPPLE POST

During its decade of operation the Pineapple Post issued 36 basic commemorative stamps (in one issue there were different designs), plus five special souvenir sheets and two postal stationery envelopes. The basic stamps were printed in sheets of 10 with a Plate Number on margin and with one stamp in each sheet being printed tete beche (upside down) to the other nine. There were many variations in the size of the sheets, the method of perforating (many were imperforate sheets with simulated printed perforations, others were rouletted) and in the colour and textures of the papers. The first five issues had denominations expressed in "Leis" but thereafter the denominations were in U.S. dollars and cents. The listings which follow are for mint unhinged specimens (except of course for the First Day Covers). N/A (NOT AVAILABLE) is an item which is listed for the record but which we cannot supply from stock. All prices are in Australian currency.



PINEAPPLE POST INAUGURATION

1st ISSUE. June 11, 1977. Inauguration of the Pineapple Post. Design printed in black ink on blue paper, rouletted, in sheets of 10 vertical format (sheet size 97 mm x 150 mm). Total printing 500 sheets plus 4 imperf sheets. 355 First Day Covers were serviced. The design features Diamond Head on the eastern boundary of the famous Walkiki Beach area, Honolulu, with Palm trees and a canoe riding the surf.

PP 1. 1 Lei stamp. MUH.....	\$3.00
PP 1a. Tete beche pair.....	N/A
PP 1b. Complete sheet of 10 rouletted.....	\$15.00
PP 1c. Complete sheet IMPERFORATE.....	N/A
PP 1d. First Day Cover.....	N/A



DISCOVERY OF HAWAII

2nd ISSUE. January 18, 1978. Bicentennial of the Discovery of Hawaii by Captain James Cook. Printed red ink on white paper, in sheets of 10, rouletted, horizontal format (size 160 mm x 97 mm). Total printing 500 sheets plus 30 imperforate sheets. 802 First Day Covers were serviced. The design pictures a medallion portrait of Cook by Josiah Wedgwood taken from a design by John Flaxman and cast in 1784.

PP 2. 1 Lei stamp.....	\$3.00
PP 2a. Tete beche pair.....	N/A
PP 2b. Complete sheet of 10 rouletted.....	\$15.00
PP 2c. Complete sheet IMPERFORATE.....	N/A
PP 2d. First Day Cover.....	N/A

NOTE: Because of a mix up at Honolulu Post Office, not all the 802 covers lodged received the First Day Cancel of January 18. Some were held and cancelled on January 27, 1978.

HISTORICAL NOTE: Captain Cook was not the first to discover Hawaii as this honour must go to the group of intrepid seafarers from the Marquesas who first discovered the islands. However, after he had anchored offshore of the island of Kauai on January 18, 1778 Cook did bring the attention of the western world to the existence of these remarkably beautiful islands.



LEI DAY ANNIVERSARY

3rd ISSUE. May 1, 1978. 50th Anniversary of Lei Day. Printing: lavender ink on white paper, in sheets of 10, vertical format (size 90 mm x 168 mm). Total printing 500 sheets rouletted plus 10 sheets imperforate. 437 First Day Covers were serviced. The design features the popular orchid "Vanda Miss Joaquim" which is used to make the popular Mauna style of lei.

PP 3. 2 Leis stamp.....	\$3.00
PP 3a. Tete beche pair.....	N/A
PP 3b. Complete sheet of 10 rouletted.....	\$15.00
PP 3c. Complete sheet IMPERFORATE.....	N/A
PP 3d. First Day Cover.....	N/A

Traditionally, May Day is Lei Day in Hawaii when school-children are encouraged to wear flower garlands to school. The first Lei Day was celebrated on May 1, 1928, and all of Hawaii literally becomes a "walking garden" of floral leis on this one day of the year.



NENE GOOSE

4th ISSUE. October 13, 1978. Nene Goose, Hawaii's state bird. Printed brown ink on yellow paper, in imperf. sheets of 10 with simulated printed perforations around the designs. In vertical format (sheet size 78 mm x 165 mm). Total printing 500 sheets. 535 First Day Covers were serviced. There was also a small printing of 27 sheets of proofs on salmon paper.

PP 4. 2 Leis stamp.....	\$2.00
PP 4a. Tete beche pair.....	N/A
PP 4b. Complete sheet of 10 imperf.....	\$10.00
PP 4c. Proof sheet on salmon paper.....	\$20.00
PP 4d. First Day Cover.....	N/A

The Hawaiian Nene Goose (pronounced nay-nay) is the official state bird of Hawaii. Known as *Nesochen sandwichensis* to the scientific world, it arrived in Hawaii many thousands of years ago and adapted itself to the harsh lava terrains. It probably evolved from the Canadian Goose. It has clawlike webbed feet which can cling to the lava surface and its wings have become modified for short flights only.



DEATH OF CAPTAIN COOK

5th ISSUE. February 14, 1979. Bicentennial of the Death of Captain Cook. Printed red ink on yellow paper with simulated printed perforation in sheets of 10, horizontal design, imperforate (size 165 mm x 90 mm). Total printing 1000 sheets. 538 First Day Covers were serviced. The design is based on a detail from John Cleveley's (1747-86) watercolour entitled "The Death of Capt. James Cook, R.N." which shows Cook about to be stabbed by a Hawaiian chieftain.

- PP 5. 2 Leis stamp.....\$4.00
- PP 5a. Tete beche pair.....N/A
- PP 5b. Complete sheet of 10.....\$15.00
- PP 5d. First Day Cover.....N/A

Cook anchored at Kealahou Bay, Hawaii, in 1779 after his return from exploring Arctic waters. On February 14 a cutter was stolen so Cook took King Kalaniopu'u hostage, demanding return of the boat. Cook was surrounded by an angry crowd and fired a shot in self-defence. Cook and four marines were overwhelmed by the angry crowd and clubbed to death.



KING KAMEHAMEHA I

6th ISSUE. May 8, 1979. 60th Anniversary of the death of King Kamehameha I. Printed in rose-lake ink on white paper with printed simulated perforations in sheets of 10, horizontal format (size 160 mm x 80 mm). Imperforate. Total printing 1000 sheets plus 42 proofs on heavy white matt paper and 49 proofs on pink paper. 438 First Day Covers were serviced. The design features a reproduction of the 1894 5c rose-lake postage stamp issued by the Republic of Hawaii and designed by E. W. Holdworth of Honolulu in an 1893 design competition. The design features the famed King Kamehameha statue which now faces Iolani Palace in Honolulu.

- PP 6. 5c stamp.....\$2.00
- PP 6a. Tete beche pair.....N/A
- PP 6b. Complete sheet of 10.....\$10.00
- PP 6c. Proof sheet on white matt paper.....\$15.00
- PP 6cc. Proof on pink paper.....\$15.00
- PP 6d. First Day Cover.....N/A

King Kamehameha I was the most spectacular figure in Hawaiian history (known as "Kamehameha the Great"). At the age of 21 he went aboard Captain Cook's ship where he observed firearms and western practices which he later adopted for his own use. He founded his own kingdom in 1795 and achieved complete unification of Hawaii in 1810. He was noted as a fierce warrior but a wise, capable and well-loved administrator. His name means "The Lonely One" in Hawaiian.



HAWAIIAN STATEHOOD

7th ISSUE. August 21, 1979. 20th Anniversary of Hawaii Statehood. A 25c issue printed in red and blue inks on white paper in miniature sheet format (size 75 mm x 88 mm) imperforate. Total printing 1500 souvenir sheets plus 4 white proofs, 43 gold proofs and 47 blue proofs. 504 First Day Covers were serviced. The design shows the Hawaiian flag and map of the Hawaiian Islands.

- PP 7. 25c Miniature sheet.....\$8.00
- PP 7a. White proof.....N/A
- PP 7b. Gold proof.....\$20.00
- PP 7c. Blue proof.....\$20.00
- PP 7d. First Day Cover.....N/A

Some of the First Day Covers are dated August 20 instead of August 21 as a result of error at the Honolulu Post Office.

In 1816 King Kamehameha I sent his war vessel the "Forester" to China with a load of sandalwood. He had no national flag so one was hastily designed for him by his British advisers and his ship's captain. The result was the Hawaiian flag (including the Union Jack). It endured through all the political changes of Hawaii's turbulent history and in 1959 became the State Flag. The eight red, white and blue stripes each represent one of the major Hawaiian islands of Oahu, Maui, Hawaii, Kauai, Molokai, Lanai, Niihau and Kahoolawe.



THE WHALING INDUSTRY

8th ISSUE. November 17, 1979. 160th Anniversary of the arrival of the first whalers to Hawaii. Printed blue ink on white paper in sheets of 10, vertical format (size 90 mm x 150 mm) imperforate with small simulated printed perforations. Total printing 1000 sheets plus colour error sheets with green design instead

of blue as a result of ink being left on rollers from a previous job. 522 First Day Covers were processed. The design shows a Hawaiian Humpback Whale, the official state mammal of Hawaii by act of the Hawaiian legislature.

PP 8. 5c stamp.....	\$2.00
PP 8a. Tete beche pair.....	N/A
PP 8b. Complete sheet of 10.....	N/A
PP 8c. Colour error. Printing in Green.....	N/A
PP 8d. First Day Cover.....	N/A

American whaling ships first arrived in Hawaii in 1819, using the islands as a convenient trading centre and provision stop. The whalers helped the economic growth of the islands and pre-empted the arrival of the first missionaries in 1820. The Humpback Whales arrive in Hawaiian waters as early as November, migrating from the North Pacific and staying until June. The Humpback is now an endangered species.



ARRIVAL OF MISSIONARIES

9th ISSUE. March 31, 1980. 160th Anniversary of arrival of first Missionaries in Hawaii. Printed light blue ink on white paper in sheets of 10, vertical format (sheet size 90 mm x 165 mm) imperforate with simulated printed perforations around designs. Total printing 1000 sheets plus 100 green proofs and 100 dark blue proofs. 334 First Day Covers serviced. The design features a reproduction of the 2c value of Hawaii's first postage stamp, the so-called "Missionaries" because the majority were mainly used on correspondence from American missionaries in the islands.

PP 9. 2c stamp.....	\$1.00
PP 9a. Tete beche pair.....	N/A
PP 9b. Complete sheet of 10.....	\$8.00
PP 9c. Green proof sheet.....	\$20.00
PP 9ca. Dark blue proof sheet.....	\$15.00
PP 9d. First Day Cover.....	N/A

The first Missionaries to Hawaii arrived in the Spring of 1820 and brought with them immediate seeds of change in manners and morals of the inhabitants.



HAWAII TERRITORY

10th ISSUE. June 14, 1980. 80th Anniversary of the Establishment of the Hawaii Territory. Printed in black ink on ochre coloured paper in sheets of 10, vertical format (sheet size 90 mm x 168 mm) imperforate with simulated perforations printed around designs. Total printing 1000 sheets plus 3 sheets of blue proofs, 50 white proofs, 50 salmon proofs and 100 yellow proofs. 310 First Day Covers were serviced. The design features one of the more colourful reef fishes found in Hawaiian waters, the humuhumunukunuuapuaa ("humuhumu" for short), a family of fish with pig-like snouts. The "puua" portion of the name means "pig" in Hawaiian.

PP 10. 10c stamp.....	\$1.00
PP 10a. Tete beche pair.....	N/A
PP 10b. Complete sheet of 10.....	\$8.00
PP 10c. Blue proof.....	N/A
PP 10ca. White proof.....	N/A
PP 10cb. Salmon proof.....	N/A
PP 10cc. Yellow proof.....	\$15.00
PP 10d. First Day Cover.....	N/A

Initially a monarchy, Hawaii achieved territorial status in 1900 after undergoing a turbulent period of provisional and republican governments.



FOUNDING OF HONOLULU

11th ISSUE. August 30, 1980. 130th Anniversary of the founding of Honolulu. Printed in blue ink on yellow paper in sheets of 10 in vertical format (sheet size 90 mm x 165 mm) imperforate with simulated perforations around designs. Total printing 1500 sheets. 409 First Day Covers were serviced. The design features "The Falls of Clyde", a 4-mast ship with three quarter inch wrought iron hull built in Glasgow, Scotland, in 1878. After a chequered career she is now a floating Museum off Honolulu's Pier 5.

PP 11. 10c stamp.....	50c
PP 11a. Tete beche pair.....	N/A
PP 11b. Complete sheet of 10.....	\$4.00
PP 11d. First Day Cover.....	\$8.00

Honolulu was founded on August 30, 1850 and is the modern capital of Hawaii with a permanent population of more than 750,000 and a large transient population of tourists and military personnel.



VISIT OF USS CONSTITUTION

12th ISSUE. November 15, 1980. 35th Anniversary of the visit of the USS Constitution. Printed black ink on yellow paper in sheets of 10 in horizontal format (sheet size 165 mm x 90 mm) imperforate with simulated printed perforations around designs. Total printing 1500 sheets plus 250 white proofs and 250 gold proofs. 451 First Day Covers were serviced. The design shows the USS Constitution (known as "Old Ironsides").

PP 12. 10c stamp.....	50c
PP 12a. Tete beche pair.....	N/A
PP 12b. Complete sheet of 10.....	\$4.00
PP 12c. White proof sheet.....	\$10.00
PP 12ca. Gold proof sheet.....	\$10.00
PP 12d. First Day Cover.....	\$8.00

The USS Constitution was launched in 1897 and played a key role in the war between U.S. and Great Britain. She visited Hawaii in 1945 and sailed into Honolulu Harbour on Sunday, November 16, 1945. In the design Diamond Head can be seen in the distance to the left of the ship.



QUEEN LIUOKANI

13th ISSUE. January 29, 1981. 90th Anniversary of Liuokalani being proclaimed Queen of Hawaii. Printed brown ink on yellow paper in sheets of 10 in vertical format (sheet size 90 mm x 167 mm) imperforate with simulated perforations printed around designs. Total printing 1500 sheets plus 250 blue proofs and 95 error sheets with design printed on gummed side of paper due to printer's error. 525 First Day Covers were serviced. The design features Iolani Palace, located near downtown Honolulu.

PP 13. 10c stamp.....	50c
PP 13a. Tete beche pair.....	N/A
PP 13b. Complete sheet of 10.....	\$4.00
PP 13c. Blue proof sheet.....	\$10.00
PP 13cx. Complete sheet error printed on gummed side.....	N/A
PP 13d. First Day Cover.....	N/A
PP 13e. First Day Postcard.....	\$10.00

Queen Liuokalani was the last Hawaiian monarch to occupy the Iolani Palace which was built in 1882 by King David Kalakaua. It was one of the first royal homes in the world to have electric lighting throughout and the first royal residence to have indoor flush toilets. Queen Liuokalani lived there from the time of King Kalakaua's death in 1891 until the monarchy was overthrown in 1893.



GREAT CHINATOWN FIRE

14th ISSUE. April 18, 1981. 95th Anniversary of the Great Chinatown Fire of 1886. Printed red ink on white paper in sheets of 10 in vertical format (sheet size 90 mm x 165 mm) imperforate with simulated printed perforations around designs. Total printing 1500 sheets plus 250 yellow proof sheets. 447 First Day Covers were serviced. The design by Honolulu artist Sharon Nishihara shows a traditional Chinese Lion Dance.

PP 14. 10c stamp.....	50c
PP 14a. Tete beche pair.....	N/A
PP 14b. Complete sheet of 10.....	\$4.00
PP 14c. Proof sheet in yellow.....	\$8.00
PP 14d. First Day Cover.....	\$6.00

Fire broke out at 4 pm on April 18, 1886 in Honolulu's Chinatown where 6000-8000 Chinese lived in ghetto conditions that comprised a third of Honolulu City. It took seven hours to control the blaze which devastated 37 acres.



HAWAII NATIONAL PARK

15th ISSUE. August 1, 1981. 65th Anniversary of the Hawaii National Park. Printed black ink on gold paper in sheets of 10 in vertical format (sheet size 90 mm x 165 mm) imperforate with printed simulated perforations. Total printing 1500 sheets plus 250 green proof sheets. 456 First Day Covers were serviced. The design features two carved Tiki figures, the Tiki being the official symbol of the park.

PP 15. 10c stamp.....	50c
PP 15a. Tete beche pair.....	N/A
PP 15b. Complete sheet of 10.....	\$4.00
PP 15c. Proof sheet in green.....	\$8.00
PP 15d. First Day Cover.....	\$6.00

Agitation for a National Park commenced in 1893 spear-headed by Lorrin A Thurston, grandson of a pioneer Hawaiian missionary, but the project was not approved until 1916 when President Woodrow Wilson signed the Hawaii Park Bill. Today the park encompasses areas of active volcanoes on the island of Hawaii.



KING DAVID KALAKAUA

16th ISSUE. November 19, 1981. 155th Anniversary of the Birth of King David Kalakaua. Printed in brown ink on yellow paper in sheets of 10 in horizontal format (size 167 mm x 90 mm) imperforate with simulated printed perforations. Total printing 1500 sheets plus 250 white proof sheets. 502 First Day Covers were serviced. The design by Honolulu artist Lillian Akamine features a Hawaiian Hawk (also known as the "Io") which is on the endangered species list and now survives only on the big island of Hawaii.

PP 16. 10c stamp.....	50c
PP 16a. Tete beche pair.....	N/A
PP 16b. Complete sheet of 10.....	\$4.00
PP 16c. Proof sheet on white paper.....	\$8.00
PP 16d. First Day Cover.....	\$6.00

King David Kalakaua was born on November 19, 1826, serving as Hawaii's reigning monarch from 1874 to 1891. He was the first monarch to use the grand Iolani Palace (see issue no 13) for all formal and ceremonial occasions, of which there were many, earning him the nickname of "The Merry Monarch". He was an accomplished lyricist and one of his notable compositions was "Hawaii Pono!" (Po-no-ee) which became the State's official anthem.



FRANKLIN DELANO ROOSEVELT

17th ISSUE. January 30, 1982. Franklin Delano Roosevelt Centenary. Printed in brown ink on white paper in sheets of 10 in horizontal format (size 165 mm x 90 mm) imperforate with simulated printed perforations. Total printing 1500 sheets plus 250 green proof sheets. 473 First Day Covers were processed plus 100 special HAPEX PHILATELIC EXHIBITION covers. The design shows a lei-bedecked President Roosevelt during his motorcade through downtown Honolulu on his 1944 visit to Hawaii.

PP 17. 10c stamp.....	50c
PP 17a. Tete beche pair.....	N/A
PP 17b. Complete sheet of 10.....	\$4.00
PP 17c. Proof sheet in green.....	\$10.00
PP 17d. First Day Cover.....	\$8.00
PP 17e. Special HAPEX cancelled cover.....	N/A

The stamp was issued at the HAPEX 1982 National Stamp Exhibition held in Honolulu. When President Roosevelt visited Hawaii in 1944 he became the first U.S. President to visit the islands.



KUHIO DAY

18th ISSUE. March 26, 1982. Kuhio Day. Printed black ink on goldenrod paper in sheets of 10 in horizontal format (size 167 mm x 90 mm) imperforate with printed simulated perforations. Total printing 1500 sheets plus 250 pink proof sheets plus 85 error sheets which due to printer's error were printed on the gummed side of the paper. 399 First Day Covers were processed. The design features Prince Jonah Kuhio Kalaniana'ole, commonly known as Prince Kuhio.

PP 18. 10c stamp.....	50c
PP 18a. Tete beche pair.....	N/A
PP 18b. Complete sheet of 10.....	\$4.00
PP 18c. Pink proof sheet.....	\$8.00
PP 18cx. Error design printed on gummed side of paper.....	N/A
PP 18d. First Day Cover.....	\$6.00

Prince Kuhio was the younger brother of Prince David Kawananakoa. Prince Kuhio worked tirelessly to reclaim a fair share of Hawaii's land from the greedy oligarchy who controlled the islands' economic and social fortunes following the downfall of the monarchy in 1893. He was elected to the US Congress as Hawaii's territorial representative and fought for statehood status for Hawaii. His work had such an impact that Kuhio Day, March 26, is now a legal holiday in Hawaii.



PINEAPPLE POST ANNIVERSARY

19th ISSUE. June 11, 1982. 5th Anniversary of the Pineapple Post. Brown and black duotone print on white paper printed in miniature sheet format (75 mm x 87 mm) imperforate. Print run was 2000 sheets printed in tete beche pairs, plus 250 white proofs and 250 green proofs. 509 First Day Covers were created (including 51 bearing tete beche pairs). The design was based on the photograph of a student at the Kohala Seminary on the island of Hawaii taken around 1912 and housed in the Hawaii state archives.

PP 19. \$1 souvenir sheet.....	\$5.00
PP 19a. Pair of sheets printed tete beche.....	\$12.00
PP 19b. White proof sheet (single).....	N/A
PP 19c. Green proof sheet.....	\$15.00
PP 19d. First Day Cover (single sheet).....	\$10.00
PP 19e. First Day Cover bearing pair of sheets printed tete beche.....	N/A

Ray Jerome Baker (1880-1972) who created the original photograph was a prolific photographer whose photos represent a wide range of Hawaiian history, its people and customs.



ALOHA WEEK

20th ISSUE. November 1, 1982. 35th Anniversary of Aloha Week. Dark red ink printed on to yellow paper in sheets of 10 stamps with horizontal format (size 165 mm x 90 mm) imperforate with simulated printed perforations around designs. Printing was 1500 sheets plus 250 white proof sheets and 85 error sheets which, due to dirty rollers, showed the maiden with green hair. 376 First Day Covers were serviced, plus 126 maximum cards. The design features an old photograph from the State Archives showing a Hawaiian girl resplendent with flower

leis around her neck and head. Although the subject has been widely used on postcards since the early 1900's the photographer or subject have not been identified.

PP 20. 10c stamp.....	50c
PP 20a. Tete beche pair.....	N/A
PP 20b. Complete sheet of 10.....	\$4.00
PP 20c. White proof sheet.....	\$8.00
PP 20ca. Printing error.....	N/A
PP 20d. First Day Cover.....	\$10.00
PP 20mx. Maximum Card with FDC.....	N/A
PP C6a. Stamp on Matching Postcard.....	\$8.00

Aloha Week was started in 1945 by the Honolulu Jaycees as a way to identify Hawaii's culture in a showcase event. It has now grown to a major event on the Hawaiian cultural calendar, being staged in September every year, having been moved from the original November.



QUEEN LILIUOKALANI ABDICATION

21st ISSUE. January 18, 1983. 90th Anniversary of the Fall of the Hawaiian Monarchy. Dull violet ink printed on to white paper in sheets of 10 stamps in horizontal format (size 165 mm x 90 mm) imperforate with simulated printed perforations around designs. Printing 1500 sheets plus 250 yellow proof sheets. 386 First Day Covers were processed. The design features a reproduction of the 2c dull violet Queen Liliuokalani stamp with "Provisional GOVT. 1893" overprint of Hawaii.

PP 21. 10c stamp.....	50c
PP 21a. Tete beche pair.....	N/A
PP 21b. Complete sheet of 10.....	\$4.00
PP 21c. Sheet of yellow proofs.....	\$8.00
PP 21d. First Day Cover.....	\$10.00

At about 5.00 pm on January 17, 1893, Queen Liliuokalani, authoress of the famed song "Aloha Oe", and the last Hawaiian monarch to live in Iolani Palace (see issue no 13), abdicated her throne under pressure from the "Committee for Safety" which was composed of dissident citizens, primarily caucasians, who were concerned that the Queen would restore some of the former monarchical powers of the Hawaiian rulers. The Committee deployed U.S. Marines around Government House despite their previous pledge to remain neutral. The Queen abdicated under protest, and the provisional government took over and all stamps in circulation were overprinted. Five years later, under urging by President William McKinley, the U.S. Congress annexed Hawaii.

LOCAL POSTS

All the issues of The Pineapple Post in this catalogue are "Local Post" stamps (or covers). For the uninitiated a Local Post is a label, usually privately produced, which prepays carriage of a letter, packet or parcel over a specific localised route. If the item is then placed into the official postal service for onward transmission it must bear, in addition to the Local Post stamp, official postage stamps of the country of posting. The collection of Local Post stamps is one of the widest categories of Cinderella stamp collecting since Local Posts have operated in many countries and in many forms since the middle of the 19th century.



SECOND GROUP OF MISSIONARIES

22nd ISSUE. April 27, 1983. 160th Anniversary of the Arrival of the Second Group of Missionaries to Hawaii. Blue ink printed on to white paper in sheets of 10 stamps in vertical format (sheet size 90 mm x 165 mm) imperforate with simulated printed perforations around designs. Printing was 1500 sheets plus 250 sheets of gold proofs, and 250 sheets of blue proofs. 372 First Day Covers were processed. The design features a reproduction of the 13c blue Missionary stamp issued by Hawaii in 1851.

PP 22. 10c stamp.....	50c
PP 22a. Tete beche pair.....	N/A
PP 22b. Complete sheet of 10.....	\$4.00
PP 22c. Gold proof sheet.....	\$10.00
PP 22ca. Blue proof sheet.....	\$10.00
PP 22d. First Day Cover.....	\$8.00

Three years after the arrival of the first group of Missionaries in 1820, the second contingent arrived to continue the conversion of the natives from their "pagan ways".



ANNEXATION OF HAWAII

23rd ISSUE. July 7, 1983. 85th Anniversary of the Annexation of Hawaii into the United States of America. Black ink on goldenrod paper in sheets of 10 in horizontal format (size 163 mm x 90 mm) rouletted. Printing 1500 sheets plus 100 imperforate sheets and 250 sheets of white proofs and 250 sheets of green proofs. 367 First Day Covers were created. The design features the Seal of the Hawaiian Republic which became obsolete on the day of the annexation. The Seal contains the words "Ua Mau Ke Ea O Ka Aina I Ka Pono" ("The Life of the Land is Perpetuated in its Righteousness"). The heraldic shield in the centre is flanked by King Kamehameha I with the Goddess of Liberty holding the Hawaiian flag on the right. Below is the legendary Phoenix arising from the ashes.

PP 23. 10c stamp.....	50c
PP 23a. Tete beche pair.....	N/A
PP 23b. Complete sheet of 10.....	\$4.00
PP 23c. Complete sheet IMPERFORATE.....	\$10.00
PP 23ca. White proof sheet.....	\$8.00
PP 23cb. Green proof sheet.....	\$8.00
PP 23d. First Day Cover.....	\$6.00

The people of Hawaii received word of the Annexation of the Islands on July 13, 1898, a full week after the Congress vote. Word was flashed ashore by the Pacific Mail S.S. Coptic as it arrived off Waikiki, whereupon spontaneous celebrations broke out in the streets.



ALOHA OE ANNIVERSARY

24th ISSUE. October 11, 1983. 105th Anniversary of "Aloha Oe". Black ink on pink paper printed in sheets of 10 in horizontal format (size 163 mm x 90 mm) rouletted. Printing was 1500 sheets plus 100 imperforate sheets and 250 blue proof sheets and 250 yellow proof sheets. 376 First Day Covers were processed. The design features Aloha Tower, constructed in 1921, and for many years the tallest building in Honolulu.

PP 24. 10c stamp.....	50c
PP 24a. Tete beche pair.....	N/A
PP 24b. Complete sheet of 10.....	\$4.00
PP 24c. Pink sheet IMPERFORATE.....	N/A
PP 24ca. Blue proof sheet.....	\$10.00
PP 24cb. Yellow proof sheet.....	\$10.00
PP 24d. First Day Cover.....	\$8.00

"Aloha Oe" was composed by Queen Liliuokalani, the last Hawaiian monarch, and the inspiration for it came when she saw two lovers embracing before their parting at Nuuanu Pali. Aloha oe means "farewell to you". The song has survived for more than a century and is widely used as a love song around the world.

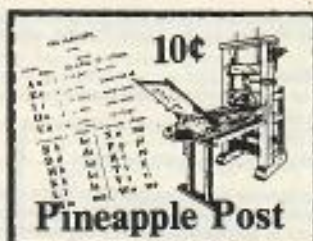


KING KAMEHAMEHA IV

25th ISSUE. February 9, 1984. 150th Anniversary of the Birth of King Kamehameha IV. Red ink on white paper printed in sheets of 10 in vertical format (size 90 mm x 163 mm) rouletted. Printing 1500 sheets, plus 100 imperforate sheets, 250 pink proof sheets and 250 yellow proof sheets. 376 First Day Covers were processed. The design features a reproduction of the 2c pale rose stamp issued by Hawaii in 1861 depicting King Kamehameha IV.

PP 25. 10c stamp.....	50c
PP 25a. Tete beche pair.....	N/A
PP 25b. Complete sheet of 10.....	\$4.00
PP 25c. Complete sheet IMPERFORATE.....	\$10.00
PP 25ca. Pink proof sheet.....	\$8.00
PP 25cb. Yellow proof sheet.....	\$8.00
PP 25d. First Day Cover.....	\$8.00

Alexander Liholiho (King Kamehameha IV) was the first Hawaiian monarch trained along western lines and as a prince he visited America and Europe on diplomatic missions. He steadfastly resisted the idea of annexation of Hawaii by the U.S. He was a benevolent monarch who helped introduce the Anglican Mission to Hawaii and personally translated the Book of Common Prayer into Hawaiian.



FIRST HAWAIIAN NEWSPAPER

26th ISSUE. May 1, 1984. 150th Anniversary of the first newspaper west of the Rockies. Black ink on yellow paper printed in sheets of 10 in vertical format (size 93 mm x 167 mm) rouletted. Printing of 1500 sheets, plus 100 imperforate sheets and 250 yellow proof sheets and 250 blue proof sheets. 353 First Day Covers serviced. The design features the Ramaga hand press used to produce "Ka Lama Hawaii" (Torch of Hawaii or Hawaiian Luminary) published in 1834 (text in Hawaiian). Also featured in the design is the first page of a Hawaiian spelling book, a replica of the first printing of the book in 1822.

PP 26. 10c stamp.....	50c
PP 26a. Tete beche pair.....	N/A
PP 26b. Complete sheet of 10.....	\$4.00
PP 26c. Sheet IMPERFORATE.....	\$10.00
PP 26ca. Proof sheet in yellow.....	\$8.00
PP 26cb. Proof sheet in blue.....	\$8.00
PP 26d. First Day Cover.....	\$8.00

"Ka Lama Hawaii" was printed with Hawaiian text and with woodcut illustrations. 200 copies were printed for circulation among students of Lahainaluna School on the island of Maui. Later in 1834 a similar paper was issued by the Sandwich Islands mission in Honolulu and named "Ka Kumu Hawaii".



JUBILEE OF STATEHOOD

27th ISSUE. August 21, 1984. Silver Jubilee of Hawaiian Statehood. A miniature sheet (denomination \$1.50) printed red, blue and brown inks on white paper (size 75 mm x 87 mm). Printing of 1000 sheets (printed in tete beche pairs) plus 200 proof sheets in blue and 200 proof sheets in yellow. 255 First Day Covers were serviced. The design features the Hawaiian and American flags above a Polynesian voyaging canoe of the type which brought the first Hawaiians to the islands. Flying over the

canoe is a Pacific Golden Plover, a bird which annually migrates from the Arctic regions to the South Pacific, often staying over in Hawaii.

PP 27. \$1.50 sheet.....	\$5.00
PP 27a. Pairs of sheets printed tote beche.....	\$12.00
PP 27b. Proof sheet blue.....	\$10.00
PP 27c. Proof sheet yellow.....	\$10.00
PP 27d. First Day Cover with single sheet.....	\$10.00

The Bill proclaiming Hawaii as the 50th State of the Union was signed by President Dwight D. Eisenhower on August 21, 1959, marking the end of a long struggle by the Islanders to achieve "first class" status.



KILAUEA IKI VOLCANIC ERUPTION

28th ISSUE. November 14, 1984. 25th Anniversary of the Kilauea Iki Volcanic Eruption. Dark brown ink on yellow paper printed in sheets of 10 horizontal format (size 167 mm x 92 mm) rouletted. Printing of 1500 sheets plus 100 imperforate sheets, 250 white proof sheets and 250 pink proof sheets. 354 First Day Covers were serviced. The design features a night scene of Kilauea Iki Crater in full eruption.

PP 28. 10c stamp.....	50c
PP 28a. Tote beche pair.....	N/A
PP 28b. Complete sheet of 10.....	\$4.00
PP 28c. Complete sheet IMPERFORATE.....	\$10.00
PP 28ca. Proof sheet in white.....	\$10.00
PP 28cb. Proof sheet in pink.....	\$10.00
PP 28d. First Day Cover.....	\$6.00

Kilauea Iki Crater roared into life at 8.08 pm on November 14, 1959, with a dramatic increase in activity on November 17. At its peak it reached 1500 feet, pumping out a million cubic yards of lava an hour, with a core temperature of 1200 degrees. The mountain finally ceased erupting on December 21 leaving a conic hill 150 feet high with pumice spreading a ground blanket five feet thick.



JAPANESE IMMIGRATION

29th ISSUE. February 8, 1985. 100th Anniversary of Japanese Immigration to the Islands. Black ink on pink paper in sheets of 10 in vertical format (size 90 mm x 163 mm) rouletted with two different designs printed se-tenant throughout the sheet. Printing was 1800 ordinary sheets plus an unknown quantity of imperforate sheets and blue and yellow proof sheets. One of the designs shows a carp streamer with Diamond Head in the background and the other features a Bon Dance Drum.

PP 29. 15c stamps se-tenant pair.....	\$1.00
PP 29a. Block of 4 with one pair tote beche.....	N/A
PP 29b. Complete sheet of 10.....	\$4.00
PP 29c. Complete sheet IMPERFORATE.....	\$10.00
PP 29ca. Proof sheet blue.....	\$10.00
PP 29cb. Proof sheet yellow.....	\$10.00
PP 29d. First Day Cover se-tenant pair.....	\$6.00

On February 8, 1885 the "City of Tokio" arrived in Honolulu Harbour carrying 944 special passengers — immigrants from Japan who came to Hawaii to work on a 3-year labour contract in the sugar fields. Included in the contingent were 108 children. Most of the original contingent stayed on after their contracts expired and were followed by many more waves of Japanese immigrants in following years so that today more than 40% of the Hawaiian population has Japanese ancestry.

NOTE: Issue no 29 was the first of the ordinary issues to depart from a policy of a single design as it had two stamps printed se-tenant form throughout each sheet instead of 10 single stamps. It also departed from the tradition of 10c stamps as from this issue the face value of the ordinary Pineapple Post issues was increased to 15 cents.



GREAT TIDAL WAVE

30th ISSUE. May 23, 1985. 25th Anniversary of the destructive Tidal Wave which hit the City of Hilo. Brown ink on yellow paper in sheets of 10 vertical format (size 90 mm x 163 mm) rouletted. Printing of 1000 sheets plus imperf. and proof sheets. The design shows an island scene and a plaque to the memory of those who lost their lives in the tidal wave.

PP 30. 15c stamp.....	50c
PP 30a. Tote beche pair.....	N/A
PP 30b. Complete sheet of 10.....	\$4.00
PP 30c. Imperforate sheet.....	\$10.00
PP 30ca. Proof sheet white.....	\$10.00
PP 30cb. Proof sheet green.....	\$10.00
PP 30d. First Day Cover.....	\$6.00

On the night of May 22, 1960 a devastating earthquake rocked the western shores of Chile, in South America, triggering an enormous seismic wave ("Tsunami") which roared west across the Pacific, striking Hilo Bay in the morning of the 23rd. At that point the wave was an estimated 50 feet high and it caused tremendous loss of life and destruction in the city. The City of Hilo has now been built on a much higher level hopefully well out of reach of any future "Tsunami".

USED STAMPS

During the ten years that the Pineapple Post operated, substantial numbers of the locals were affixed to the OUTWARD mail of Craig Miyamoto, both to collector customers and on his own business mail. These used specimens, which bear the special Pineapple Post cancels, are scattered widely around the world as most of Mr Miyamoto's correspondents lived outside Hawaii. No Pineapple Post stamps were affixed to the INWARD mail received by Mr Miyamoto so no central source of used specimens exists. For that reason we do not list used specimens in this price list since we have no stocks of them, though they do exist. The ONLY used specimens we have are those to be found on our stock of First Day Covers and this is about the only source now available to collectors who seek used specimens.



HAWAII CALLS BROADCASTS

31st ISSUE, July 5, 1985. Golden Anniversary of the first "Hawaii Calls" Radio Broadcast from Waikiki. Brown ink on yellow paper printed in sheets of 10 in horizontal format (size 167 mm x 90 mm) rouletted. 1000 ordinary sheets plus some imperforate and proof sheets. The design features a 1929 view of Waikiki Beach with Diamond Head in the background, the famous Moana Hotel in the foreground with an inset of Webley Edwards, host to the "Hawaii Calls" Show.

PP 31. 15c stamp.....	50c
PP 31a. Tete beche pair.....	N/A
PP 31b. Complete sheet of 10.....	\$4.00
PP 31c. Complete sheet IMPERFORATE.....	\$10.00
PP 31ca. Proof sheet white.....	\$10.00
PP 31cb. Proof sheet green.....	\$10.00
PP 31d. First Day Cover.....	\$6.00

For 37 years the "Hawaii Calls" programme was broadcast, usually from the Moana Hotel's Banyon Courtyard, with Webley Edwards as the compere. Approximately 1900 "Hawaii Calls" shows were produced and were carried by as many as 600 radio stations around the world. The show made Hawaii (and the Moana Hotel in particular) as famous as any location on earth and the show played a tremendous role in promoting tourism in the islands.



SUGAR CANE INDUSTRY

32nd ISSUE, July 29, 1985. 150th Anniversary of Hawaii's first sugar cane plantation. Brown ink on yellow paper in sheets of 10 in vertical format (size 90 mm x 167 mm) rouletted. Printing 1000 ordinary sheets plus imperforate and proof sheets. The design shows the Waielua Oahu sugar mill and a plantation worker.

PP 32. 15c stamp.....	50c
PP 32a. Tete beche pair.....	N/A
PP 32b. Complete sheet of 10.....	\$4.00
PP 32c. Complete sheet IMPERFORATE.....	N/A
PP 32ca. Proof sheet white.....	\$10.00
PP 32cb. Proof sheet green.....	\$10.00
PP 32d. First Day Cover.....	\$6.00

The Hawaiian sugar industry was established in 1835 by three young immigrants William Hooper (age 24), Peter Allen Brinsmade (28) and William Ladd (26) who had come to Honolulu to establish a trading house, but quickly realised that more opportunities lay in agriculture. They were given a 50 year lease on land by King Kamehameha III on Kauai and, despite some initial

setbacks, soon had established a thriving sugar industry, which is the mainstay of the island's economy. In 1985, when these stamps were issued, annual production of raw sugar had reached a million tonnes from 185,000 cultivated acres, plus 300,000 tonnes of molasses.



OFFICIAL STATE FISH

33rd ISSUE, October 1, 1985. Declaration of an Official State Fish! Printed green on white paper in sheets of 10 in vertical format (size 90 mm x 165 mm) rouletted. Printing 1000 sheets plus imperforate and proof sheets. Design features the Humuhumu-nuku-nuku-a-pua-a fish, commonly known as Humuhumu (Rhinecanthus rectangulus).

PP 33. 15c stamp.....	50c
PP 33a. Tete beche pair.....	N/A
PP 33b. Complete sheet of 10.....	\$6.00
PP 33c. Complete sheet IMPERFORATE.....	\$10.00
PP 33ca. Proof sheet yellow.....	\$10.00
PP 33cb. Proof sheet pink.....	\$10.00
PP 33d. First Day Cover.....	\$6.00

In 1984 the Waikiki Aquarium ran an election contest to nominate a fish as a State Fish to be officially designated as such during 1985 Aloha Week. Over 60,000 votes were cast and the Humuhumu fish beat its rivals fins up with 16,577 votes. The Humuhumu fish has an astonishing body colour pattern being an overall grey with green head, brown patches on the back, narrow blue lines extending down from the eyes and a mouth edged with yellow. It is a relatively small fish seldom exceeding nine inches in length.



HAWAIIAN GREEN TURTLES

34th ISSUE, March 26, 1986. Hawaiian Green Turtle. Green ink on white paper in sheets of 10 in vertical format (size 90 mm x 165 mm) rouletted. Printing 1000 sheets plus imperforate and some proof sheets. Design features a Hawaiian Green Sea Turtle (Chelonia mydas).

PP 34. 15c stamp.....	50c
PP 34a. Tete beche pair.....	N/A
PP 34b. Complete sheet of 10.....	\$4.00
PP 34c. Complete sheet IMPERFORATE.....	N/A
PP 34ca. Proof sheet yellow.....	\$10.00
PP 34cb. Proof sheet pink.....	\$10.00
PP 34d. First Day Cover.....	\$6.00

Captain James Cook recorded the use of green turtles as food during his 1778 voyage, and it is believed they were an important protein source to Polynesians as early as 600 A.D. Ancient Hawaiians prized the turtles highly, honouring them with special turtle hulas. Under the kapu (or forbidden) system then prevailing, their consumption was reserved for men only — they were

strictly taboo to women (an early example of Male Chauvinist piggery — or in this case, turtles!) All species of turtles are now protected in Hawaiian waters.



ROYAL HAWAIIAN BAND

35th ISSUE. June 11, 1986. The Royal Hawaiian Band. Green ink on white paper printed in sheets of 10 in horizontal format (size 165 mm x 90 mm) rouletted. Printing 1000 sheets plus some imperforate and proof sheets. Design features the Bandstand at Iolani Palace.

PP 35. 15c stamp.....	50c
PP 35a. Tete beche pair.....	N/A
PP 35b. Complete sheet of 10.....	\$4.00
PP 35c. Complete sheet IMPERFORATE.....	\$10.00
PP 35ca. Proof sheet yellow.....	\$10.00
PP 35cb. Proof sheet pink.....	\$10.00
PP 35d. First Day Cover.....	\$6.00

The Royal Hawaiian Band was formed in 1836 under the sponsorship of King Kamehameha III, playing only on special occasions. It survived monarchy, provisional government, republic, territory and statehood and attained status of a state band in 1905 — the only full time municipal band in the United States. For more than 100 years it has held weekly concerts at the Iolani Palace Bandstand (shown on the stamp) as well as performing at many ceremonial occasions and undertaking overseas tours. All its concerts are free. It performs for eleven months of each year — in August all 40 members of the band take their annual vacation!



STATUE OF LIBERTY

36th ISSUE. October 28, 1986. 100th Anniversary of the Statue of Liberty. Black ink on goldenrod paper in sheets of 10 in horizontal format (size 167 mm x 90 mm) rouletted. Printing 1000 sheets plus some imperforate blue and white proof sheets. The design shows the Statue of Liberty with a lei around her neck.

PP 36. 15c stamp.....	50c
PP 36a. Tete beche pair.....	N/A
PP 36b. Complete sheet of 10.....	\$3.00
PP 36ca. Complete proof sheet white.....	\$5.00
PP 36cb. Complete proof sheet blue.....	\$5.00
PP 36d. First Day Cover.....	\$6.00

The Statue of Liberty erected in New York Harbour to the memory of the immigrants of the United States is of particular significance to Hawaii, the 50th state, as every resident of the islands is either a migrant or descendants of migrants.



CHRISTMAS BICENTENNIAL

37th ISSUE. December 1, 1986. Hawaii's Christmas Bicentennial. Black on goldenrod paper printed in sheets of 10 in horizontal format (size 165 mm x 90 mm) rouletted. Printing 1000 sheets plus blue and white proof sheets. The design features Santa Claus and a Christmas message in Hawaiian.

PP 37. 15c stamp.....	50c
PP 37a. Tete beche pair.....	N/A
PP 37b. Complete sheet of 10.....	\$3.00
PP 37ca. Proof sheet white.....	\$6.00
PP 37cb. Proof sheet blue.....	\$6.00
PP 37d. First Day Cover.....	\$6.00

The first record of Christmas being celebrated in Hawaii was in 1786 when two English ships were anchored near each other at Waimea Bay, Kauai, on Christmas Eve. Captain George Dixon on the "Queen Charlotte" ordered a Christmas dinner and a bowl of punch to toast friends and family in England, and he later wrote in his journal: "This being Christmas, we spent our time agreeably, and with plenty of good cheer as we could procure". On the HMS King George, anchored nearby, Captain Nathaniel Portlock noted that the previous day he had gone ashore and distributed trinkets to women and children of the island, and a caller had brought him a gift of hogs and vegetables. Thus gifts had been exchanged on the island at Christmas for the first time.

HISTORICAL RESEARCH

Very considerable historical research was undertaken by Craig Miyamoto to ensure complete accuracy both in the designs and in the background press information provided with each issue. The information was based on the vast amount of Hawaiian available in the State Library system, the State Archives, and private publications available in Honolulu. Almost all the stamps were issued on dates of special historic interest in Hawaii thus providing a miniature encyclopaedia of the history and culture of the islands to be found in no other series of Local Post Issues.

DETAILS OF QUANTITIES

For issues Nos 1 to 28 inclusive we have been able to provide complete details of quantities printed of ordinary sheets, imperforate sheets, proof sheets etc and quantities of First Day Covers serviced for each issue as this information was available from THE PINEAPPLE POST CATALOGUE covering issues of 1977-84. For issues 29 to 42 we have had to rely on the press releases which accompanied all new issues, but which did not provide the detailed information on quantities as contained in the catalogue. Craig Miyamoto advises us that for issues No 29 and on, the basic printing remained at 1500 or 1000 sheets and that quantities for proof and imperforate sheets and First Day Covers did not vary to any degree from the issues immediately preceding No 29.



TYPE A



TYPE B

PINEAPPLE POST 10th ANNIVERSARY

38th & 39th ISSUE (Combined). June 11, 1987. 10th Anniversary of the Pineapple Post. Two souvenir sheets each size 75 mm x 80 mm printed in black ink on goldenrod Davac gummed paper each with a denomination of \$1.50. Printing 1000 of each sheet, plus an unknown quantity of proofs. One sheet (Type A) depicts a Hawaiian man with crested feather cloak and the other (Type B) shows a young Hawaiian woman wearing feather leis.

PP 38. \$1.50 sheet Type A. Gold.....	\$8.00
PP 38a. Proof sheet white.....	\$8.00
PP 38b. Proof sheet blue.....	\$8.00
PP 38d. First Day Cover.....	\$10.00
PP 39. \$1.50 sheet Type B. Gold.....	\$6.00
PP 39a. Proof sheet blue.....	\$12.00
PP 39b. Proof sheet white.....	N/A
PP 39d. First Day Cover.....	\$10.00
PP 39-39e. Proof sheets in white in so tenant pairs (Types 1 & 2).....	\$12.00

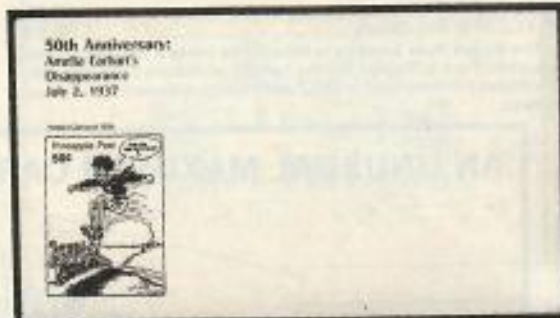
The art work for these sheets was based on original lithographs done by John Webber during Captain James Cook's visit to Hawaii (then called the Sandwich Islands) in 1778. His sketches and subsequent renderings of Hawaiian life provide considerable insight into the life and history of ancient Hawaii.

NOT AVAILABLE

The abbreviation N/A (meaning NOT AVAILABLE) appears alongside many items in this price list. This is because either we have no stock at all of these particular items as singles, or because our small stock has been reserved for making up collections. We include them in the list so that interested collectors know what exists - which is a different thing to what is available from stock at any given time.

ACKNOWLEDGEMENT

The background information about Pineapple Post stamp issues No 1 through to No 28 was extracted from The Pineapple Post Catalogue By Craig Miyamoto produced in 1985 to cover issues 1977-84. For issues No 29 through to the last issue No 42 we gratefully acknowledge the co-operation of Craig Miyamoto in making available to us copies of the individual press releases he made for these issues.



AMELIA EARHART

40th ISSUE. July 2, 1987. 50th Anniversary of the day the world renowned aviatrix Amelia Earhart disappeared on the final leg of her round the world flight. This issue comprised a postal envelope (the first postal stationery item issued by the Pineapple Post) with cachet incorporating a 50c stamp. Printed red on white standard size envelope. Printing was 1000 envelopes. The imprinted stamp design is based on a 1935 cartoon from the Pittsburgh Post-Gazette showing Amelia Earhart leaping over seven famous male fliers as she performed the first solo flight ever made from Hawaii to the Continental USA.

PP 40. 50c stamped envelope unused.....	\$1.00
PP 40d. First Day Cover.....	\$5.00

In 1937 Amelia Earhart disappeared between New Guinea and Howland Island, apparently off course and far north of the tiny Pacific island she was trying to reach. Her last radio transmissions recorded her frustration at not being able to find her destination. She, her navigator and plane were never found.

PRINTING & DESIGN

The majority of the design work for the Pineapple Post stamp issues was carried out by Craig Miyamoto, though some specialist designs were provided by outside Honolulu artists and these are noted in the listings where known. The printing of all stamps and miniature sheets was by offset on Davac "invisible" gummed (non-stick) paper.

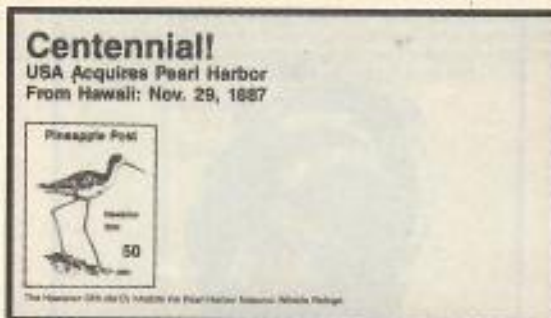


KODAK HULA SHOW

41st ISSUE. September 13, 1987. 50th Anniversary of the Kodak Hula Show. Red on white paper printed in sheets of 10 in horizontal format (size 160 mm x 90 mm) rouletted. Printing 1000 sheets plus unknown quantity of proof sheets. The design features a modern hula dancer using a pair of ull (pronounced oo-lee) or Hawaiian gourd rattles.

PP 41. 20c stamp.....	50c
PP 41a. Tete beche pair.....	N/A
PP 41b. Complete sheet of 10.....	\$4.00
PP 41c. Complete sheet IMPERFORATE.....	\$8.00
PP 41ca. Proof sheet blue.....	\$8.00
PP 41cb. Proof sheet gold.....	\$8.00
PP 41d. First Day Cover.....	\$8.00

The Kodak Hula Shows are held three times a week in Queen Kapiolani Park in Waikiki, for the benefit of visitors to the islands. The shows commenced in 1937 and have run since then without a break.



PEARL HARBOUR ACQUISITION

42nd ISSUE. November 29, 1987. Centenary of the acquisition of Pearl Harbour by the United States. A stamped envelope printed chocolate ink on white. Printing 1000 copies. The design on the 50c Impressed stamp features an Hawaiian Stilt Bird (*Himantopus mexicanus knudsoni*).

PP 42. 50c stamped envelope mint.....	\$1.00
PP 42d. First Day Cover.....	\$8.00

The Hawaiian Stilt is a subspecies of the Black-necked Stilt of both the East and West Coasts of North America and southward to Brazil and the Galapagos Islands.

This was the final issue of The Pineapple Post.

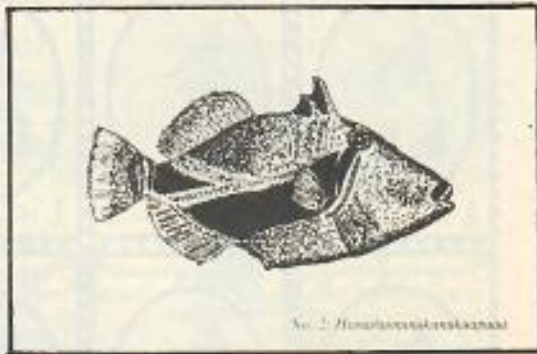


On January 29, 1981 the Pineapple Post issued a 10c stamp featuring Iolani Palace in Honolulu. A small quantity of these stamps were affixed to the official 10c USA Historic Preservation postal stationery card. (USPS 1979) featuring in full colour the Iolani Palace. The cards were postmarked on the Day of Issue of the Pineapple Post stamp with a Honolulu cancel on the Impressed postal card stamp and a Pineapple Post Cachet cancelling the Local Post. This is a unique maximum card with a Local Post stamp complementing an official issue bearing the same subject.

PP13e 1981 Iolani Palace Postal Card/Maximum Card with First Day of Issue Cancel.....\$10

HERITAGE SERIES POSTCARDS

As part of the overall plan to promote interest in the history of Hawaii, the Pineapple Post produced a set of six numbered Heritage Series postcards with designs based on the original artwork used in its Local Post stamps. As well as promoting Hawaiian tourism, they were sold to collectors to use in creating Maximum Cards. We can offer these cards (unused) singly or in sets as follows:



PPC 1. No 1 Card featuring the Nene Goose as on Pineapple Post No 4 issue of 1978. Mint.....\$2

PPC 2. No 2 Card featuring the Humuhumunukunuaiafia fish as on Pineapple Post issue No 10 of 1980. Mint.....\$2

PPC 3. No 3 Card featuring the Iolani Palace as on Pineapple Post No 13 issue of 1981. Mint.....\$2

PPC 4. No 4 Card featuring the Chinese Lion Dance as on Pineapple Post issue No 14 of 1981. Mint.....\$2

PPC 5. No 5 Card featuring the Hawaiian Hawk as on Pineapple Post issue No 16 of 1981. Mint.....\$2

PPC 6. No 6 Card featuring the Hawaiian Beauty as on Pineapple Post issue No 20 of 1982. Mint.....\$4

PPC 7. The same card with the matching Pineapple Post Stamp attached and cancelled Honolulu on Day of Issue.....\$8

PPCX 8. Complete set of six Heritage Series Postcards as above. Mint.....\$12



PRICE LISTS

This list covers only one specific area of Cinderella stamps, the local stamps of the Pineapple Post of Hawaii, but we have other general lists covering Cinderella stamps of the world. Some of these lists are now in short supply, but if you let us know your specific areas of interest we may have a list in that field.

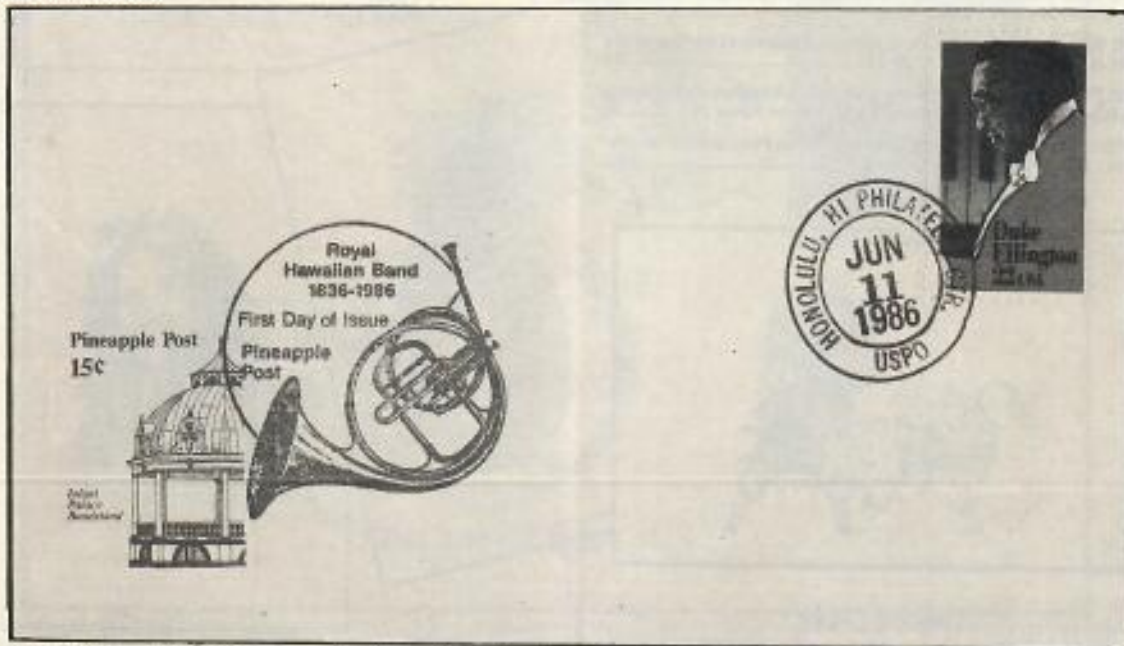
PRICES IN LIST

Please note that the prices in this list are expressed in Australian currency which is based on dollars and cents.

Plate No. 2



This is a complete sheet of the No 2 issue (slightly reduced in size). It is typical of an horizontal sheet format with the Plate No 2 at top left and the tete beche stamp in the bottom right corner. The actual issued size of this sheet was 160 mm x 97 mm. The design is printed red on white paper.



Illustrated here is a First Day Cover of the Pineapple Post. In the majority of cases the Pineapple Post used a standard pictorial cancel featuring a pineapple, but for some issues it created special commemorative cancels such as this one for the Royal Hawaiian band issue of 1986 when a pictorial Trumpet design was used along with a Duke Ellington 22c USA stamp. All covers received a Honolulu postmark on the day of issue of the Pineapple Post Local. Where available, First Day Covers are offered in the list. We can also offer a collection of 20 different Pineapple Post First Day Covers (Stock Code No PPX9) for.....\$60

This is a complete sheet of 10 of the first issue (reproduced actual size) and shows a typical vertical format sheet with the tete beche stamp on the bottom right corner and Plate No 1 printed vertically on the right hand selvege.

The stamps are printed in black ink on blue paper and the sheet is rouletted. Note the denominations of 1 Lei used on issues 1 to 5. Thereafter denominations were expressed in cents.



TETE BECHE PAIRS

All the single commemorative stamps issued by the Pineapple Post can be collected in tete beche pairs (i.e. pairs with one design upside down in relation to the other) as all sheets of 10 had one design inverted. While we can't supply ALL the set of ten pairs issued, we do have a collection of 20 different such pairs, total 40 stamps MUH. Stock Code No PPX3.....\$55



PINEAPPLE POST COLLECTIONS

We have been able to assemble a number of starter collections of Pineapple Post stamps, sheets, tete beche pairs, First Day Covers and Postcards for collectors who want to form a basic collection. These collections represent considerable savings as they are priced a long way below the cost of purchasing individual items since the latter have to include labour costs of handling.



- PPX 1. The complete collection of 36 different Pineapple Post single stamp commemorative issues released while the service operated. Includes all the early scarce issues. MUH.....\$22
- PPX 2. A smaller starter collection of 20 different single stamps (our choice). MUH\$6
- PPX 3. A collection of 20 different (our choice) tete beche pairs of the Pineapple Post issues. (40 stamps). MUH...\$55
- PPX 4. The complete collection of single Pineapple Post issues in complete sheets of 10 which include the marginal plate numbers and tete beche items. Total 35 different sheets. (350 stamps) One sheet incorporates 2 different designs. MUH.....\$175
- PPX 5. A starter collection of 20 different complete sheets of 10 as above (our choice). 200 stamps in all. MUH....\$45
- PPX 6. A collection of 20 different (our choice) proof sheets of 10 of various Pineapple Post issues. These proof sheets are printed on different coloured papers or different links to the issued stamps. 20 imperforate sheets (200 stamps in all).\$75
- PPX 7. Complete collection of the special issues made by the Pineapple Post, namely the five different miniature sheets (Issues Nos 7, 19, 27, 38 & 39) and the two special Postal Stationery items (Issues Nos 40 & 42). All MUH.....\$25
(Note if you add PPX 1 and PPX 7 together you have the complete collection of single individual issues of the Pineapple Post).
- PPX 8. Complete set of six different Heritage Series Postcards with designs based on Pineapple Post issues. (See separate advt for more details and illustrations). Six mint cards,\$12
- PPX 9. A collection of 20 different First Day Covers (our choice) of various Pineapple Post issues all on attractive covers with special cachets, cancels etc. A nice range.....\$60

Order and correspondence to THE STAMPS DIVISION:

REVIEW PUBLICATIONS PTY. LTD.

1 Sterling Street, Dubbo, New South Wales, Australia, 2830

ALL MAIL TO: P.O. Box 1463, Dubbo, N.S.W., Australia, 2830

THE LAST WORD

This list is a complete departure from our usual Price Lists of world wide Cinderella stamps since it concentrates on just one series, namely the local issues of the Pineapple Post of Hawaii, a service which operated in Honolulu for a decade from 1977 to 1987.

I have visited Hawaii many times and therefore have something of a special interest in their islands, their natural beauty and their fascinating history. But I also know that this interest is shared by many collectors around the world. I hope that this list will therefore become the standard reference work on the rather remarkable Pineapple Post created and run by Craig Miyamoto with such enthusiasm and dedication.

To those collectors who are introduced to us for the first time by this list, I would point out that the Pineapple Post issues listed here represent only a small portion of our very large and varied stock of world wide Cinderella issues. If you contact me with information on your specific Cinderella interests, perhaps I can find a list of material covering those interests.

In the meantime, as they say in Hawaii, Aloha.

BILL HORNADGE

Managing Director (and founder) of REVIEW PUBLICATIONS PTY. LTD. 1 Sterling Street, Dubbo, N.S.W., Australia, 2830



How to use this price list of **PINEAPPLE POST STAMPS**



TERMS & CONDITIONS

PRICES: All prices in this list are in AUSTRALIAN CURRENCY.

STOCK NUMBERS: Please order by the stock numbers preceding each item.

POSTAGE: We pay postage within Australia on orders of \$50 or more. Under \$50 or for orders shipped outside Australia, postage is always extra. Overseas customers should always stipulate whether the items are to be shipped surface mail or airmail.

PAYMENT: We require payment in advance on all orders except from customers who have established charge accounts prior to ordering. Payment must be in AUSTRALIAN currency by means of Australian cheques, Postal Orders or by BANKCARD, VISA, MASTERCARD or AMERICAN EXPRESS.

OVERSEAS CUSTOMERS: Customers outside Australia may remit by Bank Draft (expressed in Australian currency) by US or UK Banknotes or by VISA, MASTERCARD or AMERICAN EXPRESS. We cannot in any circumstances accept foreign stamps, coins or cheques in payment.

GUARANTEE: All items are sold under our UNCONDITIONAL GUARANTEE that if you are not completely satisfied with them on receipt you may return them for immediate refund. No questions. No hassles. Review Publications Pty. Ltd. was established in 1948 and is a long time member of the Australasian Stamp Dealers' Association. We have traded continuously from our address below since 1957.

Order and correspondence to THE STAMPS DIVISION:

REVIEW PUBLICATIONS PTY. LTD.

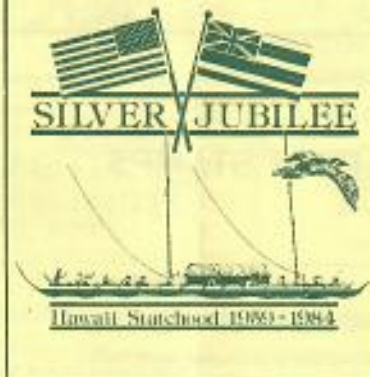
1 Sterling Street, Dubbo, New South Wales, Australia, 2830

ALL MAIL TO: P.O. Box 1463, Dubbo, N.S.W., Australia, 2830

PHILATELIC FABLES BY BILL HORNADGE

BKS 3. PHILATELIC FABLES. By Bill Hornadge. This is a collection of tall stories and satirical send-ups of the zanier aspects of stamp collecting, poking gentle fun at the foibles of both collectors and dealers. Cinderella stamps feature very prominently in some of the fables. Illustrated by Bob Swinfield. 72 pages PB \$7.50

The Pineapple Post \$1.50



This catalogue is published by Review Publications Pty Ltd of 1 Sterling Street, Dubbo, NSW, Australia 2830, and was wholly set up and printed in Australia by the Dubbo Printing Works.