

East - 1973
TOTAL No.Number
Successful

EAST - 1973

Number
Newly observed

Date	TOTAL No.	Number Successful	Number Newly observed
6/3-6/4 #11 1973	5	0	5
6/4-6/5 IIII	5	4	2
6/5-6/6 II	2	0	2
6/6-6/7	3	1	0
6/7-6/8 III	3	2	3
6/8-6/9 III	3	1	3
6/9-6/10 II	2	2	2
6/10-6/11 II	2	0	0
6/11-6/12 IIII	4	2	4
6/12-6/13 II	2	0	0
6/13-6/14 III	3	0	2
6/14-6/15 IIII	5	1	3
6/15-6/16 IIII	4	1	2
6/16-6/17 #11	6	1	4

	TOTAL	Successful	new	
6/17-6/18	### 9 	1 1	### 1	6
6/18-6/19	### 7	11 2	###	5
6/19-6/20	### 7 	1 1		3
6/20-6/21	### 8 	0	11	2
6/21-6/22	### 5	1 1		0
6/22-6/23	### 5	1 1	11	2
6/23-6/24	### 5	0		0
6/24-6/25	11 2	0		0
6/25-6/26	4	11 2	1	1
6/26-6/27	4	1 2		0
6/27-6/28	### 5	0		4
6/28-6/29	1 1	0		0
6/29-6/30	### 5	1 2		0
6/30-7/1	4	11 3	1	1
7/1-7/2	4	1 1	11	2
7/2-7/3	3	0		0

114.

EAST-1973

DATE	TOTAL	SUCCESSFUL	NEW
7/3-7/4 IIII	6	II 2	I 1
7/4-7/5 IIIII	9	III 3	II 2
7/5-7/6 IIII	5	I 1	0
7/6-7/7 IIII	5	I 1	0
7/7-7/8 IIIII	7	III 3	I 1
7/8-7/9 IIII	6	II 2	I 1
7/9-7/10 IIIII	4	II 2	I 1
7/10-7/11 III	3	I 1	0
7/11-7/12 IIII	4	III 4	0
7/12-7/13 III	3	II 2	0
7/13-7/14 III	3	I 1	I 1
7/14-7/15 III	3	I 1	I 1
7/15-7/16 III	3	I 1	0

TOTAL-

LIBRARY OF
GEORGE H. BALAZS

1974

Night PM to AM

EAST

19/83

of Those -

DATE

NO. NESTING TURTLES OBSERVED

NEW/NO. SUCCESSFUL

NO. SUCCESSFUL

ISLAND

PM	AM	SEASON NO.	NO. NESTING TURTLES OBSERVED	NESTING	NEW	NO. SUCCESSFUL
6/1	6/2		3	3	17	11 2
6/2	6/3		6	6	6	4
6/3	6/4		6	5	7	1
6/4	6/5		10	6	7	8
6/5	6/6		6	3	2	1
6/6	6/7		9	5	3	5
6/7	6/8		3	1	1	1
6/8	6/9		8	8	5	4
6/9	6/10		6	4	3	1
6/10	6/11		6	6	2	3
6/11	6/12		9	5	6	2
6/12	6/13		9	5	2	5
6/13	6/14		9	4	4	3
6/14	6/15		8	2	2	4
6/15	6/16		8	1	1	2
6/16	6/17		11	2	2	8
6/17	6/18		5	1	1	3
6/18	6/19		6	1	1	3
6/19	6/20		7	1		4
6/27	6/28		6	0	0	2
6/28	6/29		9	2	2	5
6/29	6/30		9	2	2	2
6/30	7/1		12	4	4	8
7/1	7/2		9	2	2	4
7/2	7/3		20	3	3	12
7/3	7/4		10	1	1	6

LIBRARY OF GEORGE H. BALAZS

DATE (AM)	NO. NESTING TURTLES	NESTING		NO. OF THOSE - SUCCESSFUL	IS.			
		NEW	OLD					
7/4 - 7/5		9	0	0		5	EAST ↓	
7/5 - 7/6		6	2	2		2		
7/6 - 7/7		9	0	0		7		
7/7 - 7/8		7	1	1		4		
7/8 - 7/9		10	2	2		5		
7/9 - 7/10		8	1	1		4		
7/10 - 7/11		9	0	0		6		
7/11 - 7/12		8	2	2		6		
7/12 - 7/13		8	0	0		2		
7/13 - 7/14		12	0	0		8		
7/14 - 7/15		11	2	2		7		
7/15 - 7/16		9	0	0		7		
7/16 - 7/17		4	0	0		2		
7/17 - 7/18		5	0	0		2		
7/26 - 7/27								
7/27 - 7/28		1	0	0				
7/28 - 7/29		6	1	1		3		
7/29 - 7/30		10	1	1		7		
7/30 - 7/31		7	0	0		3		
7/31 - 8/1		8	2	2		5		
8/1 - 8/2		5	0	0		5		
8/2 - 8/3		3	1	1		3		
8/3 - 8/4		3	1	1		2		
8/4 - 8/5		4	1	1		2		
8/5 - 8/6		2	0	0		1		
8/6 - 8/7		7	2	2		6		
8/7 - 8/8		8	0	0		2		

continued p 91

DATE	NO. NESTING TURTLES	NEW		O.F. THOSE NO. SUCCESSFUL		IS.
		NO.	BORN	NO.	SUCCESSFUL	
8/8-8/9	III 3	0	0	III 3		
8/9-8/10	I 1	I 1	I 1	I 1		
8/10-8/11	IIII 4	0	0	II 2		
8/11-8/12	IIII III 9	I 1	I 1	IIII II 7		
8/12-8/13	IIII 7	0	0	III 5		
8/13-8/14	II 2	0	0			
8/14-8/15	IIII 4	0	0	II 2		
		104	106			229

NO. NESTING EMERGENCES ^{TO} 81

1975 EAST

NOCTURNAL DATES	EAST-TOTAL NO.	SUCCESSFUL	NEWLY OBSERVED
6/6 - 6/7/75 ^{EAST} ↓	11	3	11
6/7 - 6/8	15	5	13
6/8 - 6/9	15 17	10	8
6/9 - 6/10	10	4	5
6/10 - 6/11	8	2	2
6/11 - 6/12	11	4	6
6/12 - 6/13	12	5	6
6/13 - 6/14	13	4	7
6/14 - 6/15	8	6	4
6/15 - 6/16	17	9	9
6/16 - 6/17	14	4	5
6/17 - 6/18	11	7	5
6/18 - 6/19	10	4	3
6/19 - 6/20	17	4	2
6/20 - 6/21	10	4	1
6/21 - 6/22	17	11	5
6/22 - 6/23	16	7	3
6/23 - 6/24	10	1	2
6/24 - 6/25	12	8	0
TRIG-			
6/25 - 6/26 TRIG	3	2	3
7/18 - 7/19 TRIG	2	1	2
7/19 - 7/20 EAST	11	6	1
7/20 - 7/21 EAST	6	3	0
7/21 - 7/22 "	13	7	3
7/22 - 7/23 "	6	3	2
7/23 - 7/24 "	12	7	2

- After 14 day, new maybe:
1. new arrivals (lesons?)
 2. longer interesting
 3. island changes out and out
 4. Misses + TC but not Ag.

TRIG

IS.

LIBRARY OF
GEORGE H. BALAZS

80

1975-EAST

NESTING EMERGENCES, CONTINUED

1975

DATES	TOTAL NO.	SUCCESSFUL	NEWLY OBSERVED
7/24-7/25 EAST	9	3	0
7/25-7/26 EAST	8	3	0
7/26-7/27 EAST	8	5	1 (on EAST) formerly B. Trig 7/19
7/27-7/28 EAST	8	5	1
//			
7/28-7/29 W-S	4	3	4
7/29-7/30 W-S	5	4	4 (1 on W-S) formerly N Trig 7/28
7/30-7/31 W-S	4	2	4 (1 on W-S) formerly N Trig 7/28
7/31-8/1 W-S	4	3	4 (1 on W-S) formerly Tc 104 on EAST
8/1-8/2 W-S	5	2	4
8/2-8/3 W-S	7	2	5
8/3-8/4 W-S	4	3	2
8/4-8/5 W-S	4	3	2
8/5-8/6 W-S	4	2	2
8/6-8/7 tern	0 Tern Is.	0	0 TERN
8/26-8/27 EAST	6	3	1
8/27-8/28 W-S	3 whale-skate	0	1 whale-skate
5/21-5/22/75 EAST	3	1	3

WHALE-SKATE

1976

1976 NUMBER OF NESTING TURTLES ⁶³
PER NIGHT - EAST ISLAND

<u>PM TO AM DATE</u>	<u>TOTAL NO. OBSERVED</u>	<u>NEWLY OBSERVED</u> <small>NEW ID</small>
6/28-6/29/76	4	4
6/29-6/30	2	1
6/30-7/1	1	1
7/1-7/2	5	1
7/2-7/3	2	1
7/3-7/4	3	1
7/4-7/5	5	5
7/5-7/6	3	1
7/6-7/7	5	2
7/7-7/8	6	3
7/8-7/9	4	3
7/9-7/10	1	0
7/10-7/11	—	—
7/11-7/12	4	1
		<u>24 TOTAL</u>

13 NIGHT
COVERAGE

100

1983 NUMBER OF FEMALES PER NIGHT 1983

(Night PM TO AM)

(of new obser.)
NO. LONG TERM

DATE	NO. OBSERVED	OF THOSE NO. SUCCESSFUL	% SUCCESS.	NEW NEW OBSER.	% NEW OBSER.	DAY RECOR.	Day 1 st of WHARE-SKATE		
6/3-6/4/83	2 (W-S)	0							
6/4-6/5/83 SAT. SUN.	2 East	0	0	2 ^{1,2}	100%	1	1	50%	58
6/5-6/6 SUN. - MON	2 East	0	0	0	0	2	0	0	
6/6-6/7 MON. - TUES.	6 East	4 ^{1,2,3,5}	67%	4 ^{3,4,5,6}	67%	3	1	25%	
6/7-6/8 TUES. - WED.	3 ^{7,8,9} East	0 ^{7,8,9}	0	3 ^{7,8,9}	100%	4	3	100%	
6/8-6/9 WED. - THURS.	3 ^{10,11,7} East	2 ^{10,11}	67%	2 ^{10,11}	67%	5	1	50%	
6/9-6/10 Thurs - Friday	4 ^{9,6,4,12} East	2 ^{9,12}	50%	1 ¹²	25%	6	1	100%	
6/10-6/11 Friday - Sat.	4 ^{6,13,14,7} East	1 ^{14,15,16}	25%	2 ^{13,14}	50%	7	1	50%	
6/11-6/12 Sat. - SUN.	3 ^{6,7,15} East	2 ^{7,15}	67%	1 ¹⁵	33%	8	1	100%	
6/12-6/13 SUN. - MON.	2 ^{13,16} East	2 ^{13,16}	100%	1 ¹⁶	50%	9	0	0	
6/13-6/14 MON. TUES.	1 ¹⁷ EAST	0	0	1 ¹⁷	100%	10	0	0	
6/14-6/15 TUES. - WED.	4 ^{17,18,19,20} EAST	2 ^{17,18,20}	50%	3 ^{18,19,20}	75%	11	1	33%	
6/15-6/16 Wed. - Thurs.	4 ^{6,21,17,19} EAST	2 ^{6,21}	50%	1 ²¹	25%	12	1	100%	
6/16-6/17 Thurs. Friday	3 ^{17,22,23} EAST	3 ^{17,22,23}	100%	2 ^{22,23}	67%	13	0	0	

Am-ann DATE	NO. OBSERVED	OF THOSE, NO. Successful	% Successful	NEW OBSER.	% OBSER.	DAY	LONG TERM RECORD	%
6/17-6/18 Friday-SAT.	^{18, 24, 25, 26} 4	1 ²⁶	25%	^{24, 25, 26} 3	75%	14	1	25%
6/18-6/19 SAT. - SUN	^{3, 24, 25} 3	1 ²⁵	33%	0	0	15	0	0
6/19-6/20 SUN. MON.	3, 24, UNK 2	3, 24 UNK, TURTLE 2	67%	0	0	16	0	0
6/20-6/21 MON-TUES.	^{2, 5, 11, 27, 28, 24} 6	2 ^{28, 24}	33%	^{27, 28} 2	33%	17	1	50%

Completion of 17 day of consecutive monitoring;
Also paired with SRL on Whale-Skate

$$\bar{x} = \frac{3.35}{\text{per night}}$$

$$\frac{43.18\%}{\text{Successful}}$$

28 in 17 nights,
or 1.65 per night

26 in 14 nights,
or 1.86 per night

13 out of 28 - 46.43%
TAG Recovery

EAST

NUMBERS OF ♀ TURTLES PER NIGHT 61

NIGHT AM TO AM

1976

DATE

NO. OBSERVED

of those -
NO. SUCCESSFUL

Island

DATE	NO. OBSERVED	of those - NO. SUCCESSFUL	Island
6/28 - 6/29/76 <small>Monday</small>	4	3	East
6/29 - 6/30	2	1	East
6/30 - 7/1	1	0	East
7/1 - 7/2	5	2	East
7/2 - 7/3	1	0	Trig
7/2 - 7/3	2 (est)	2 (est)	East
7/3 - 7/4 <small>SAT SUN</small>	3	1	East
7/4 - 7/5	5	4	East
7/5 - 7/6	3	1	East
7/6 - 7/7	5	3	EAST
7/7 - 7/8 <small>WED THUR</small>	6	4	EAST
7/8 - 7/9 <small>FRI</small>	4	3	EAST
7/9 - 7/10 <small>SAT.</small>	1	0	EAST
7/10 - 7/11 <small>SUN</small>	1	0	TERN Is.
7/11 - 7/12 <small>MON</small>	4	3	EAST

46

1977 EAST ISLAND
 NUMBERS OF ♀ TURTLES PER NIGHT (1977) 818

Night PM to AM DATE	NO. OBSERVED	observed New	NO. OF THOSE SUCCESSFUL (?)	ISLAND
6/24-6/25/77 (Sat)	8	8	4	EAST
6/25-6/26	3	2	1	EAST
6/26-6/27	9	8	4	EAST
6/27-6/28 (Tuesday)	11	6	7	EAST
6/28-6/29	6	3	4	EAST
6/29-6/30	8	1 (note)	3	EAST
6/30-7/1 (Friday)	5	2	1(1)	EAST
7/1-7/2 (Saturday)	9	6	6	EAST
7/2-7/3	11	8	7	EAST
7/3-7/4 (Monday)				

44 Turtles in 9 NIGHTS
 ~ 4.9 per night

1 Recovery on East out of 44 encountered =
 2.3% (a 3 year cycle)

EAST 1978 NUMBERS OF FEMALE TURTLES PER NIGHT (1978) 81

Night PM to AM DATE	No. OBSERVED	NEW OBSERVED	NEW SUCCESSFUL	of those NO. SUCCESSFUL	ISLAND
6/9-6/10 FRI-SAT	11	11	2		EAST
6/10-6/11 SAT-SUN	12	4	4		EAST
6/11-6/12 SUN-MON	9	5	4		EAST
6/12-6/13 MON-TUES	8	8	1		EAST
6/13-6/14 TUES-WED	11	7	5		EAST
6/14-6/15 WED-THURS	11	7	5		EAST
6/15-6/16 THURS-FRI	11	7	6		EAST
6/16-6/17 FRI-SAT	4	1	3		EAST
6/17-6/18 SAT-SUN	12	7	6	9	EAST
6/18-6/19 SUN-MON	7	5	3	5	EAST
6/19-6/20 MON-TUES	6	4	1	1	EAST

66 Turtles in 11 nights
6 per night

NIGHT PM to AM

NUMBER OF FEMALE TURTLES
PER NIGHT

EAST 1979

DATE	No. OBSERVED	% SUCCESS	NEW OBSERVED	OF THOSE, NO. SUCCESSFUL	DAY ISLAND
6/16 - 6/17/79 SAT. - SUN.	12	$\bar{X} = 42.4\%$ $N = 13$	12	3 25	① EAST
6/17 - 6/18 SUN Mon	11		1	5 45.5	② EAST
6/18 - 6/19 Mon - TUES	8		5	5 62.5	③ EAST
6/19 - 6/20 Tues - wed	3		2	2 66.7	④ EAST
6/20 - 6/21 WED - Thurs	6		5	3 50	⑤ EAST
6/21 - 6/22 Thurs - Fri	7		4	3 42.9	⑥ EAST
6/22 - 6/23 Fri - Sat	8		6	3 37.5	⑦ EAST
6/23 - 6/24 Sat - SUN	8		4	4 50	⑧ EAST
6/24 - 6/25 SUN - Mon	9		4	5 55.6	⑨ EAST
6/25 - 6/26 Mon - TUES	4		3	1 25	⑩ EAST
6/26 - 6/27 TUES - WED	4		3	1 25	⑪ EAST
6/27 - 6/28 WED - Thurs	5		3	2 40	⑫ EAST
6/28 - 6/29 Thurs - Fri	6 to 4 rearing		3	3 50	⑬ EAST TOTAL

$\bar{X}_{total} = 4.2$ Turtles/Night

LIBRARY OF
GEORGE H. BALAZS

104

NUMBER OF FEMALES PER NIGHT EAST IS. 1980

NIGHT PM to AM	NO. OBSERVED	% successful	new observed	of those No. Successful	DAY	% turtles new observed ↓ ISLAND
6/10-6/11/80 TUES-WED	7	57.1%	7	TC 1-7 4 TC 1, 2, 3, 5		EAST
6/11-6/12 Wed-Thurs	5	20.0	2	TC 8 NOTE	1 TC 7	2 EAST
6/12-6/13 Thurs-Friday	6	66.7	4	TC 9, 10, 11, 12	4 TC 8, 10, 11, 12	3 EAST
6/13-6/14 Friday-Sat	4	25.0	1	TC 13	1 TC 13	4 EAST
6/14-6/15 Sat-Sun	8	37.5	6	TC 14, 16, 17, 18, 19	3 TC 15, 17, 19	5 EAST
6/15-6/16 Sun-Mon	6	83.3	3	TC 19a, 10, 24	5 TC 19, 19a, 20, 24	6 EAST
6/16-6/17 Mon-Tues	3	100	0		3 TC 9, 14, 23	7 EAST
6/17-6/18 TUES-Wed	1	0	1	TC 25	0	8 EAST
6/18-6/19 Wed-Thurs	2	100	2	TC 26, 27	2	9 EAST
6/19-6/20 Thurs-Friday	4	100	3	TC 28, 29, 30	4 TC 30, 25, 29, 28	10 EAST
6/20-6/21 Friday-Sat.	3	66.7	3	TC 31, 32, 33	2 TC 32, 33	11 EAST
6/21-6/22 Sat.-Sun.	7	48.6	6	TC 34, 35, 36, 37, 38, 39	2 ^{new} _{new}	12 EAST
6/22-6/23 Sun-Monday	6	50.0	2	TC 40, 41, 42	3 TC 41, 41, 40	13 EAST

LIBRARY OF
GEORGE H. BALAZS

DATE	NO. OBSERVED	% Successful	NEW OBSERVED	of Those NO. Successful	DAY	ISLAND
6/23-6/24/80	TC 34, 39, 1, 3, 4, 42, 43	57.19%	2	4	14	EAST
Monday-Tues	7					
6/24-6/25	TC 44, 7, 34, 8, 5, 9, 4, 10, 2 (Am nesting missed on SP)	55.6	1 TC 44	5	15	EAST
TUES - Wed	9					
6/25-6/26	TC 45, 9, 5, 7,	75.0	1 TC 45	3	16	EAST
Wed - Thurs	4					
6/26-6/27	TC 9, 13, 11(46),	100	0	3	17	EAST
Thurs - Friday	3					
6/27-6/28	TC 12, 17, 18	66.7	0	2	18	EAST
Friday - Sat	3					
6/28-6/29	TC 48, 19, 18(47), 23, 20, 24, 19a	85.8	1 TC 48	6	19	EAST
SAT - SUN	7					
6/29-6/30	TC 15, unreadable	50.0	0	0 or 1	20	EAST
SUN - Mon	2					

45 Total = 20 nights

42 Total = 14 nights

3 turtles/night

NIGHT PM
TO AM

EAST IS. 1981

% Turtles
NEWLY
OBSER.

DATE

NO. OBSERVED

SUCCESSFUL

NEW
OBSERVEDOF THOSE,
NO. SUCCESSFUL
No. of Long-term
TAG Recoveries

DAY

ISLAND

5/26-5/27/81 10 80% 10 3 8 (1) 100% EAST
TUES. WED.

5/27-5/28 8 62.5% 6 5 5 (2) EAST
Wed - Thurs.
TC + 2815

5/28-5/29 7 28.6% 4 2 2 (3) EAST
Thurs - Friday

5/29-5/30 8 12.5% 7 4 1 (4) EAST
Friday - SAT
TC 20, 21, 22, 23, 24,
25a, 25b, 28, 15

5/30-5/31 12 41.7% 4 2 5 (5) EAST
SAT - SUN
TC 26, 28, 29a, 27
29, 10, 19, 25a, 27, 27, 16, 17, 24, 28

5/31-6/1 20 20% 14 2 4 (6) EAST
SUN - MON
TC 25b, 29, 30, 28, 24, 31, 32, 31, 33, 32, 33,
10, 26, 19, 27, 34, 35, 33, 36, 32, 37, 38

6/1-6/2 10 36.4% 3 0 4 (7) EAST
MON - TUES
TC 29, 33, 39, 32, 28, 33, 34, 38
2815, 40, curled PCs

6/2-6/3 12 50% 8 3 6 (8) EAST
TUES - WED
TC 41, 42, 43, 29, 38, 44 (white spot), 45, 46, 47, 37, 48, 49
41, 42, 43, 29, 38, 44 (white spot), 45, 46, 47, 37, 48, 49

6/3-6/4 14 57% 10 6 8 (9) EAST
WED - THURS
TC 50, 48, 22, 49, 41, 52, 46, 37, 51, 54, 55, 56, 57, 58, 59
41, 42, 43, 29, 38, 44 (white spot), 45, 46, 47, 37, 48, 49

6/4-6/5 13 46% 6 2 6 (10) EAST
THURS - Friday
TC 40, 40, 50, 56, 57, 61, 45, 27, 62, 23, 45, 64, 65, 37

LIBRARY OF
GEORGE H. PALATZ

EAST IS. 1981

103

DATE	NO. OBSERVED	% Successful	NEW OBSERVED	OF THOSE NO. Successful	DAY	% TWITTERS NEWLY OBSER.	ISLAND
6/5 - 6/6/81 FRIDAY SATURDAY	12	50%	8	3	60 (11)		EAST
6/6 - 6/7 SAT SUN	13	38.5%	9	2	5 (12)		EAST
6/7 - 6/8 SUNDAY MONDAY	18	55.6%	8	3	10 (13)		EAST
6/8 - 6/9 MONDAY - TUES.	10	40%	4	1	4 (14)		EAST
6/9 - 6/10 TUES. - WED.	12	41.7%	4	1	5 (15)		EAST
6/10 - 6/11 WED. - THURS.	12	16.7%	4	0	2 (16)		EAST
6/11 - 6/12 THURS. - FRIDAY	13	61.5%	4	0	8 (17)		EAST
6/12 - 6/13 FRIDAY - SAT.	10	60%	3	0	6 (18)		EAST
6/13 - 6/14	15	60%	2	1	9 (19)		EAST
6/14 - 6/15	14	14.3%	2	1	2 (20)	MINIMUM	EAST

GEORGE H. BALAZS
 LIBRARY OF

TC (28, 109, 133, 135, 137, 141, 142, 143, 144, 145, 146, 147, 148, 149, 150, 151, 152, 153, 154, 155, 156, 157, 158, 159, 160, 161, 162, 163, 164, 165, 166, 167, 168, 169, 170, 171, 172, 173, 174, 175, 176, 177, 178, 179, 180, 181, 182, 183, 184, 185, 186, 187, 188, 189, 190, 191, 192, 193, 194, 195, 196, 197, 198, 199, 200)

CONTINUED P109

(Continued from page 103) EAST 1981

109

NUMBER OF FEMALES PER NIGHT

DATE	NO. OBSERVED	% SUCCESSFUL	NEW OBSERVED	OF THOSE, NO. SUCCESSFUL	Day	% Turtles newly arrived ISLAND
6/15 - 6/16/81 Monday - Tues.	17	52.9%	0	9	21	EAS
	TC 110, 55, 28, 111, 32, 258, 60, 24, 16, 16, 108, 41, 65, 38, 49, 43, 50					
6/16 - 6/17 Tues. - Wed.	18	55.5%	2	10	22	EAS
	TC 49, Curviline turtle, 112, 57, 58, 44, 113, 48, 29, 32, 59, 65, 38, 114, 43, 40					
6/17 - 6/18 Wed. - Thurs.	18	50.0%	5	9	23	EAS
	TC 47, 44, 37, 45, 53, 115, 116, 63, 65, 117, 118, 114, 40, 258, 3734, 50, 54, 3732, 5450, 247, 247, 247					

$\bar{x} = 12.9$
PER NIGHT

44/80
Successful

127
(23 NIGHTS)
5.5 per NIGHT

101
(14 NIGHTS)
7.2 per NIGHT

LIBRARY OF
GEORGE H. BALAZS

102		NUMBER OF FEMALES EAST PER NIGHT					1982 (night)	(of newly obser.)	
NIGHT PM TO AM	NO. OBSERVED	OF THOSE - NO. SUCCESSFUL	% SUCCESS.	NEW OBSER.	% NEWLY OBSER.	DAY	NO. LONG TERM RECOVERIES	%	
6/6-6/7/82 SUN. - Monday	12	6 ⁱ	50.0%	12	100%	①	5	41.7%	
	(TC 1-12)								
	Blue paint								
6/7-6/8 MON - TUES	14	6	42.8%	9	*	②	4	44.4%	
	TC 13, 14, 15, 5, 3, 6, 16, 17, 18, 19, 11, 8, 20, 55, 1								
	(TC 13-20 + 55)								
6/8-6/9 TUES. Wed.	17	9 ⁱⁱ	52.9%	12		③	3	25%	
	TC 21, 20, 22, 15, 23, 24, 25, 26, 27, 2, 8, 29, 30, 31, 14, 32, 33								
	(TC 21-33)								
6/9-6/10 Wed - Thurs	13	5 ⁱⁱ	38.5%	7		④	2	42.8%	
	TC 34, 27, 35, 26, 36, 37, 38, 2, 39, 26, 40, 25, 32								
	(TC 34-40)								
6/10*-6/11 Thurs - Friday	9	5	55.6%	5		⑤	3	60.0%	
	TC 34, 37, 42, 35, 43, 41, 44, 45, 21								
	(TC 42-45)								
6/11-6/12 Friday - Sat.	17	8	47.1%	10		⑥	6	60%	
	TC 2, 46, 47, 44, 45, 43, 40, 41, 48, 49, 50, 51, 52, 53, 54, 42, 55, 1, 2								
	(TC 46-55)								
6/12-6/13 SAT. - SUN.	7	4	57.1%	4		⑦	1	25%	
	TC 55, 1, 56, 2, 57, 58, 59								
	(TC 56-59)								
6/13-6/14 SUN - MON	5	2	40.0%	3		⑧	2	67%	
	TC 60, 61, 58, 62 (inc. 59), 45, 63								
	(TC 60-63)								
	Start Green								
6/14-6/15 MON - TUES	10	3	30%	4		⑨	0	0	
	TC 64, 62, 45, 58, 65, 57, 63, 50, 66, 67								
	(TC 64-67)								
	chip not on East 6/15								
6/15-6/16 TUES - Wed	10	5	50%	5		⑩	1	20%	
	TC 69, 63, 50, 64, 68, 45, 67, 70, 71, 72								
	(TC 68-72)								

LIBRARY OF
GEORGE H. BALAZS

* ARRIVAL OF SECOND PERSON ON EAST

EAST-1982

LIBRARY OF
GEORGE H. BALAZS

103

DATE	NO. OBSERVED	OF those - NO SUCCESS	% SUCCESS	NEW OBSER.	% NIGHTLY OBSER.	(night) DAY	NO. C. Turn RECOV.
6/16 - 6/17/82 WED. - Thurs. (TC 73-77)	9	4	44.4%	5		11	3
6/17 - 6/18 Thurs - Friday (TC 78-87)	16	5	31.3%	10		12	4
6/18 - 6/19 Friday - Sat. (TC 88-94)	18	6	33.3%	7		13	3
6/19 - 6/20 SAT - SUN. (TC 95-99) <i>start white</i>	14	5	35.7%	5		14	4
6/20 - 6/21 SUN - MON. (TC 100-105)	16	10	62.5%	5		15	1
6/21 - 6/22 MON. - TUES. (TC 106-109)	14	5	35.7%	2		16	0
6/22 - 6/23 TUES. - Wed. (TC 110-112)	13	7	53.8%	2		17	1
6/23 - 6/24 WED. - Thurs. (TC 113)	11	5	45.4%	1		18	1
6/24 - 6/25 Thurs. - Friday (TC 114-116)	17	9	52.9%	3		19	0
$\bar{X} = 12.7$ per night			45.2%	111	(19 NIGHTS)	98 (14 NIGHTS)	7.0 per night
			Successful		5.8 per night		

1983

Monitoring of female green turtles nesting on East Island, French
Frigate Shoals, 4-21 June 1983 (17 nights).

by George H. Balazs

Date 1983 (p.m.-a.m.)	No. of new females first seen ashore to nest in 1983	Long-term tag resightings
6/4-6/5	2	1
6/5-6/6	0	0
6/6-6/7	4	1
6/7-6/8	3	3
6/8-6/9	2	1
6/9-6/10	1	1
6/10-6/11	2	1
6/11-6/12	1	1
6/12-6/13	1	0
6/13-6/14	1	0
6/14-6/15	3	1
6/15-6/16	1	1
6/16-6/17	2	0
6/17-6/18	3	1
6/18-6/19	0	0
6/19-6/20	0	0
6/20-6/21	2	1
Total	28	13 (46.4%)

1984

GEORGE H. BALAZS

Number of adult female green turtles recorded nesting during June 1984 at East Island, French Frigate Shoals (for ²⁶/₁ nights with complete coverage).

Date 1984	Total number ashore to nest	Number of new females first seen ashore to nest in 1984	Repeat nesters seen ashore	Long-term tag recoveries
6/3	12	12	0	5
6/4	29	18	11	10
6/5	26	17	9	8
6/6	21	9	12	4
6/7	--	--	--	--
6/8	25	21	4	18
6/9	32	13	19	4
6/10	21	10	11	7
6/11	21	12	9	6
6/12	--	--	--	--
6/13	8	3	5	2
6/14	6	5	1	2
6/15	11	2	9	0
6/16	--	--	--	--
6/17	--	--	--	--
6/18	20	7	13	1
6/19	28	9	19	4
6/20	39	3	36	1
6/21	41	2	39	0
6/22	26	2	24	1
6/23	--	--	--	--
6/24	20	6	14	3
6/25	22	5	17	1
6/26	13	1	12	0
6/27	11	0	11	0
Total	--	157	--	77(49%)

1985

Number of adult female green turtles recorded nesting during June 1985 at East Island, French Frigate Shoals (for 18 nights with complete coverage).

Date 1985	Total No. ashore to nest	No. of new females first seen ashore to nest in 1985	Repeat nesters seen ashore	Long-term tag recoveries
6/11	12	12	0	4
6/12	13	9	4	0
6/13	24	15	9	1
6/14	18	6	12	6
6/15	10	5	5	0
6/16	19	11	8	1
6/17	16	10	6	8
6/18	20	8	12	5
6/19	17	9	8	7
6/20	21	12	9	3
6/21	15	10	5	4
6/22	--	--	--	--
6/23	12	9	3	5
6/24	10	5	5	1
6/25	9	2	7	1
6/26	19	4	15	2
6/27	12	0	12	1
6/28	17	1	16	1
6/29	17	3	14	0
Total	--	131	--	50 (38.2%)

1986

Code: I-drive East.GHB 10/86

Numbers of adult female green turtles recorded nesting during June and July 1986 at East Island, French Frigate Shoals

Date	Total No. ashore to nest	No. of new females first seen ashore to nest in 1986	Repeat nesters seen ashore	Long-term tag recoveries
<u>June 1986</u>				
1	4	4	0	3
2	6	6	0	1
3	7	3	4	3
4	5	4	1	2
--	--	--	--	--
9	6	6	0	2
10	6	3	3	2
11	4	0	4	0
12	4	2	2	2
--	--	--	--	--
15	4	2	2	2
16	3	1	2	0
17	8	3	5	1
18	8	1	7	1
--	--	--	--	--
21	5	5	0	2
22	5	3	2	1
23	9	3	6	1
<u>Subtotal</u>	--	46	--	23 (50%)
<u>July 1986</u>				
1	8	1	7	0
2	6	1	5	1
--	--	--	--	--
4	3	0	3	0
5	3	0	3	0
--	--	--	--	--
7	4	1	3	1
8	2	0	2	0
9	10	2	8	1
10	5	0	4	1
11	10	3	7	0
12	5	1	4	0
--	--	--	--	--
17	3	0	3	0
--	--	--	--	--
19	9	2	7	1
20	9	0	9	0
21	8	2	6	0
<u>Total</u>	--	59	--	28 (47.5%)

1986

Numbers of adult female green turtles recorded nesting during June 1986 at Tern Island, French Frigate Shoals (for 16 nights of coverage).

Date June 1986	Total No. ashore to nest	No. of new females first seen ashore to nest in 1986	Repeat nesters seen ashore	Long- term tag recoveries
5	2	2	0	0
6	1	1	0	0
7	1	--	--	--
8	1	1	0	--
9	--	--	--	--
10	--	--	--	--
11	1	1	0	0
12	1	0	--	--
13	1	0	--	--
14	0	0	0	0
15	0	0	0	0
16	0	0	0	0
17	--	--	--	--
18	1	0	1	--
19	1	0	1	--
20	2	1	1	0
21	1	0	1	0
22	0	0	0	0
23	0	0	0	0
Total	--	6	--	0

1987

Number of adult female green turtles recorded nesting during May/June 1987 at East Island, French Frigate Shoals (for 26 nights with complete coverage).

Date 1987	Total No. ashore to nest	No. of new females first seen ashore to nest in 1987	Short-term repeat nesters seen ashore	Long-term tag recoveries
May				
25	2	2	0	1
26	7	6	1	4
27	5	3	2	2
28	1	1	0	0
29	8	6	2	5
--	--	--	--	--
June				
1	4	4	0	1
2	0	0	0	0
3	8	7	1	2
4	9	7	2	4
5	5	3	2	1
6	8	3	5	1
7	3	2	1	1
--	--	--	--	--
11	15	13	2	7
12	10	6	4	1
13	17	8	9	3
14	8	4	4	2
15	8	3	5	0
16	15	8	7	4
17	15	5	10	2
18	9	5	4	3
19	8	3	5	0
20	14	3	11	2
21	14	3	11	1
--	--	--	--	--
26	15	10	5	3
27	11	4	7	2
28	17	5	12	2
Total	--	124	--	54 (43.5%)

1988
W-5

Number of adult female green turtles recorded nesting from 25 May to 18 August 1988 at Whale Skate Island, French Frigate Shoals (for 74 nights with complete coverage).

Date 1988	Total No. ashore to nest	No. of new females first seen ashore to nest in 1988	Approximate No. depositing eggs	Short-term repeat nesters seen ashore	Long-term recoveries
<u>May</u>					
25	2	2	2	0	0
26	5	5	2	0	1
27	9	4	7	5	2
28	9	6	3	3	1
29	7	2	3	5	0
30	7	3	4	4	1
31	9	4	7	5	0
<u>June</u>					
1	5	4	4	1	2
2	8	5	4	3	1
3	5	2	2	3	0
4	6	4	2	2	1
5	5	3	1	2	1
6	13	5	3	8	1
7	7	2	5	5	1
8	9	1	5	8	0
9	14	3	8	11	0
10	10	4	3	6	1
11	20	4	6	16	3
12	16	4	7	12	1
13	13	2	2	11	1
14	22	2	5	20	4
15	12	3	3	9	3
16	8	4	5	4	0
17	6	4	4	2	2
18	6	0	2	6	0
19	17	9	5	8	2
20	--	--	--	--	--
21	19	1	5	18	0
22	21	2	12	19	0
23	19	0	9	19	0
24	17	1	5	16	0
25-27	--	--	--	--	--
28	7	0	2	7	0
29	10	3	6	7	0
30	13	2	5	11	0

Table --Continued.

Date 1988	Total No. ashore to nest	No. of new females first seen ashore to nest in 1988	Approximate No. depositing eggs	Short-term repeat nesters seen ashore	Long-term recoveries
<u>July</u>					
1	7	1	4	6	0
2-5	--	--	--	--	0
6	18	0	2	18	0
7	19	2	9	17	0
8	18	2	7	16	1
9	9	0	5	9	0
10-13	--	--	--	--	--
14	17	2	6	15	0
15	8	0	1	8	0
16	16	1	7	15	0
17	18	0	5	18	0
18	24	3	10	21	0
19	21	2	8	19	0
20	14	1	9	13	1
21	7	1	2	6	0
22	9	0	2	9	0
23	15	0	4	15	0
24	14	0	5	14	1
25	19	4	5	15	0
26	18	4	12	14	1
27	16	2	8	14	0
28	10	1	4	9	0
29	19	2	8	17	0
30	14	2	5	12	0
31	11	1	4	10	0
<u>August</u>					
1	17	9	7	17	0
2	12	2	5	10	0
3	6	0	3	6	0
4	7	1	2	6	0
5	13	0	7	10	0
6	10	0	7	10	0
7	10	2	6	8	0
8	8	0	0	8	0
9	15	0	8	15	0
10	6	1	3	5	0
11	12	0	6	12	0

Table --Continued.

Date 1988	Total No. ashore to nest	No. of new females first seen ashore to nest in 1988	Approximate No. depositing eggs	Short-term repeat nesters seen ashore	Long-term recoveries
<u>August</u>					
12	15	0	11	15	0
13	11	0	2	11	0
14	9	0	6	9	0
15	8	1	3	7	0
16	12	0	2	12	0
17	8	1	2	7	0
18	9	0	4	9	0
Total	--	139	364 (2.6%)	--	33 (23.7%)

1988
TERN

Number of adult female green turtles recorded nesting from
13 May to 29 August 1988 at Tern Island, French Frigate Shoals (for
106 nights with complete coverage).

Date 1988	Total No. ashore to nest	No. of new females first seen ashore to nest in 1988	No. depositing eggs	Short-term repeat nesters seen ashore	Long-term recoveries
<u>May</u>					
13	2	2	2	0	0
14	0	0	0	0	0
15	0	0	0	0	0
16	0	0	0	0	0
17	0	0	0	0	0
18	2	1	2	1	0
19	1	0	1	1	0
20	1	1	0	0	0
21	0	0	0	0	0
22	0	0	0	0	0
23	0	0	0	0	0
24	1	1	0	0	0
25	2	1	1	1	1
26	1	0	0	1	0
27	0	0	0	0	0
28	1	0	1	1	0
29	4	1	1	3	1
30	1	1	0	0	0
31	4	1	0	3	1
<u>June</u>					
1	4	1	2	3	0
2	3	1	3	2	0
3	0	0	0	0	0
4	0	0	0	0	0
5	1	0	1	1	0
6	0	0	0	0	0
7	1	1	1	0	0
8	1	1	0	0	0
9	0	0	0	0	0
10	0	0	0	0	0
11	0	0	0	0	0
12	2	0	2	2	0
13	1	0	1	1	0
14	1	1	1	0	0
15	4	2	1	2	2
16	6	0	0	6	0
17	4	0	2	4	0
18	4	1	3	3	0
19	5	2	2	3	1

Table b.--Continued.

Date 1988	Total No. ashore to nest	No. of new females first seen ashore to nest in 1988	No. depositing eggs	Short-term repeat nesters seen ashore	Long-term recoveries
<u>June</u>					
20	1	0	0	1	0
21	0	0	0	0	0
22	0	0	0	0	0
23	1	0	0	1	0
24	5	0	1	5	0
25	4	0	3	4	0
26	--	--	--	--	--
27	3	0	0	3	0
28	4	0	2	4	0
29	1	0	0	1	0
30	4	1	0	3	0
<u>July</u>					
1	8	1	2	7	0
2	9	1	1	8	0
3	4	1	2	3	0
4	2	0	2	2	0
5	2	1	0	1	0
6	4	0	0	4	0
7	4	0	0	4	0
8	2	0	1	2	0
9	4	0	1	4	0
10	2	0	0	2	0
11	2	1	1	1	0
12	2	0	1	2	0
13	2	1	1	1	0
14	5	0	2	5	0
15	2	0	2	2	0
16	1	0	1	1	0
17	3	2	2	1	0
18	3	0	2	3	0
19	--	--	--	--	--
20	3	1	1	2	0
21	1	0	0	1	0
22	4	1	2	3	0
23	1	0	1	1	0
24	4	0	2	4	0

Table b.--Continued.

Date 1988	Total No. ashore to nest	No. of new females first seen ashore to nest in 1988	No. depositing eggs	Short-term repeat nesters seen ashore	Long-term recoveries
<u>July</u>					
25	1	0	1	1	0
26	1	0	1	1	0
27	3	0	1	3	0
28	6	1	3	5	0
30	--	--	--	--	--
31	2	0	1	2	0
<u>August</u>					
1	4	0	0	4	0
2	2	0	1	2	0
3	2	0	1	2	0
4	0	0	0	0	0
5	1	1	1	0	0
6	2	0	1	2	0
7	3	0	2	3	0
8	1	0	0	1	0
9	2	0	0	2	0
10	2	0	2	2	0
11	2	0	1	2	0
12	0	0	0	0	0
13	1	0	0	1	0
14	1	0	1	1	0
15	1	0	0	1	0
16	2	0	1	2	0
17	1	0	0	1	0
18	0	0	0	0	0
19	0	0	0	0	0
20	1	0	1	1	0
21	1	0	1	1	0
22	1	0	0	1	0
23	3	0	1	3	0
24	0	0	0	0	0
25	0	0	0	0	0
26	0	0	0	0	0
27	1	0	1	1	0
28	1	0	1	1	0
29	1	0	0	1	0
Total	--	33	85 (2.6)	--	7 (21.2%)

DAILY TOTALS
NESTING GREEN TURTLES
FRENCH FRIGATE SHOALS, 1989

1989

Island: FAST

Date	# Turtles Up	# New Turtles ID'ed	# Nests	Invest.	Comments
5/03/89 1	8	8	1 possible	DB	FIRST NIGHT ON EAST - 4 Probable Nest already here from previous nights
					TURTLES APPEAR MORE INTERESTED IN CRAWLERS OR RESTING NEAR WP OF CORRIDOR THAN NESTING
5/04/89 2	1 crawler	0	0	DB	Tide down and most
5/05/89 3	5	0	4	JF	Rained all day all night
5/06/89 4	3	2	2	JF	1 is a crawler, 1 is a possible nest
5/07/89 5	5	3	0	JF	Nice evening with rain
5/08/89 6	18	12	3	JF	Busy night, one UID ♀ with a mango nest that was record? 4 UID turtles total
5/09/89 7	11	3	7	JF	2 turtles not identified, both digging egg pits and then gone upon return
5/10/89 8	10	3	3	JF	1 turtle not identified. In addition, 2 are possible turtles but not sure if 1 is
5/11/89 9	14	6	6	JF	2 turtles with one egg which was probably laid. I'll classify as a digger.
5/12/89 10	7	3	6	JF	One turtle UID nest (crawling), 1 egg (of same ID) but didn't have time to see again
5/13/89 11	5	2	2	JF	One turtle UID crawling to food.
5/14/89 12	10	4	6	JF	3 UID turtles incl 2 probable nests.
5/15/89 13	13	7	7	JF	
5/16/89 14	12	6	7	JF	
5/17/89 15	9	2	3	JF	Mostly crawlers. 3 UID turtles. No eggs or mangoes seen. 2 could have been on
5/18/89 16	14	6	4	JF	Mostly crawlers. Including 2 UID turtles
5/19/89 17	10	7	7	JF	Includes 1 egg digger
5/20/89 18	17	15?	7?	JF	10 painted, 2 tagged (one questionable)
5/21/89 19	11	1	2-N 4-P	CR	
5/22/89 20	9	3	1	DB	
5/23/89 21	13	13	2	DB	Did 1st walk at 17:00 to count 7 turtles
5/24/89 22	17	5	3	DB+MM	12 up for first walk at 19:15
5/25/89 23	27	4	6	mm & N	1 turtle not ID'ed (CONTINUOUS OBSERV 7:00 → 7:00)

110

DAILY TOTALS
NESTING GREEN TURTLES
FRENCH FRIGATE SHOALS, 1989

Island: EAST

Date	# Turtles Up	# New Turtles IDed	# Nests	Invest.	Comments
5/26/89	27	1	10	M.M.	
5/27/89	23	1	6	M.M.	
5/28/89	28	6	9	M.M.	1 nestor unmarked, too close to egg.
5-29-89	22	6	3	aw	RAIN! Ugh... 3 turts unidentified
5-30-89	19	4	5	aw	low tide in p.m. 4 turts unidentified
5-31-89	26	3	6	aw	5 turts unidentified
6-01-89	20	3	6	aw	2 turts UID.
6-02-89	28	12	5	M.M.	5 w/o paint, 3 of which had tags applied
6-03-89	32	3	3	M.M.	morning, few nesters!!!
6-04-89	27	6	13	M.M.	
6-05-89	28	3	10	M.M.	
6-06-89	27	7	4	aw	2 turts UID.
6-07-89	29	1 New/2 illegible #	2N, 5M	aw	*no record of tag #s
6-08-89	26	4 New/1 illegible #	2N, 3M	aw	*no record of tag #s 1/2 moon - @ midnite; windy, wet & wild
6-09-89	29	4 2UB	4N, 3M	aw	Good IDEA had!!! 3 turts UID.
6/10/89	27	6	1N, 2M, 6P	wh	1 unlegible paint, B.P. ii no check for tags
6/11/89	34	6	2M, 2P, 3N	wh	look up pt # for W166 (current = 210)
6/12/89	28	3	1P, 1N	wh	
6/13/89	37	4	2P, 1N	wh	
6-14-89	41	5	4N, 5M	aw	(2UK) Moon set at 3:15
6-15-89	31	7 total (3 prev.)	6N, 5M	aw	Moon set at 4:00; 3 turts UID
6-16-89	35	4 New, 1 prev. #	6N, 1M	aw	+ 1 prev. # illegible 2 turts UID.
6-17-89	34	1	6N, 1M	aw	Moon set at ... 0:00? 1 UK / UID.
		100			

DAILY TOTALS
NESTING GREEN TURTLES
FRENCH FRIGATE SHOALS, 1989

Island: East

Date	# Turtles Up	# New Turtles IDed	# Nests	Invest.	Comments
7/11/89	70 37		6M/2P/5N	7hr	
7/12/89	71 26		3M/2N	7hr	
7/13/89	72 28		7M	7hr	COMATOSE & EXHAUSTED (slept 2:15 → AM)
7/14/89	73 31		3M/2P/2N	MM	
7-15-89	74 40	2	4N, 4P	glw	1
7-16-89	75 29 26	0	3N, 7M	glw	Full moon; clear; turtles jumpy
7-17-89	76 31			glw	
7-18-89	77 30	2	5N, 4M	glw	
7-19-89	78 23	1	6N, 1M	glw, bc.	
7-20-89	79 15	0	3N, 4	RC, GLW	HEAVY WINDS THUNDER & LIGHTNING - HEAVY RAIN - STOPPED @ 2400
		(5)			

DAILY TOTALS
NESTING GREEN TURTLES
FRENCH FRIGATE SHOALS, 1989

Island: East

Date	# Turtles Up	# New Turtles IDed	# Nests	Invest.	Comments
7-21-89	80 20 20	4	5N, 1P	REC, TAM	OVERCAST LIGHTNING TO EAST WIND NEE 20K low Hubs
7-22-89	81 22	0	1N	REC, TAM	Jumpy Turtles RAINY MOST OF NIGHT, ALOT OF TURTLES ON BEACH → HZ
7/23/89	82 39 36	1	1M, 6P, 2N	TAM	
7/24/89	83 30		1P, 5N	TAM	
7/25/89	84 29	1	3P 3N	TAM	CLARE SEES TAGS 10:15
7/26/89	85 32	1	1M 4P 6N	TAM	" " " "
7/27/89	86 27	1	7P 5N	KRN	Beautiful Night
7/28/89	87 27	0	4M 9P 2N	KRN	
7/29	88 23	0	4M, 4P, 3P	TAM	CLEAR NIGHT CRESCENT MOON 4:50 AM FEW SQUALLS
7/30	89 19	1	2M 4N	TAM	NEW MOON FEW SQUALLS 9-1AM 2-4 CLEAR, WINDY
7/31	90 20	2?	2M, 3P, 4N	TAM	WINDY, CLOUDS, RAIN SQUALLS, COLD, ^{SUN RISE} 7:50
8-01-89	91 19	2	8N	glw	cold & windy
8-02-89	92 16 15	0	6N	glw	windy w/rain squalls
8-03-89	93 14	0 90?	1P, 4N	glw	
8-04-89	94 11	0 1	5N	glw	
8-05-89	95 10	0	1M, 2N	glw	
8-06-89	96 10	2	1P, 5N	glw	
8-07-89	97 20	1	1M, 9P, 2N	MM	
8-08-89	98 13	2	4P	MM	
8-09-89	99 24	1*	6M, 4P, 5N	MM	*Pr armants, 8 tags
8-10-89	100 16	1	5M, 4N	MM	
8-11-89	101 18	1	2M, 3P, 5N	gin	
8-12-89	102 10	1	8N	gin	
8-13-89	103 9	0	1M, 2N	gin	
8-14-89	104 13	0	1M, 5N	gin	
8-15-89	105 12	0	1M, 3N	gin	
8/21 Determined Final Tot. # Turtles up on night by data for 7/23-8/15					
23					

DAILY TOTALS
NESTING GREEN TURTLES
FRENCH FRIGATE SHOALS, 1989

Island: EAST

Date	# Turtles Up	# New Turtles IDed	# Nests	Invest.	Comments
8-16-89	106 10	(1)	3P	NM	(1) prev pt. turt.
8-17-89	107 3	0	1M, 1P	M ²	
8-18	108 5	1	0	M ²	
8-19	109 5	0	3	M ²	rain squalls → midnt clear, windy aft. 12.
8-20	110 12	0	1M, 3P, 3N	glw	1/2 moon up @ 11pm cloudless but windy.
8-21	111 11	0	1P, 2N	glw	
8-22	112 15	0	2M, 3P, 4N	glw	
8-23	113 15	1	1M, 3P, 3N	glw	
8-24	114 3	0	1M, 1N	M ²	
8-25	115 5	0	1M	M ²	
8-26	116 6	0	1P, 2N	M ²	
8-27	117 7*	0	2N	M ²	* 2 Baskers
8-28	118 3	0	1N	glw	
8-29	119 2	0	1M, 1N	glw	
8-30	120 3	0	—	glw	
8-31	121 3	0	1N	M ²	
9-01	122 2	0	1M, 1N	M ²	
9-02	123 4	0	2N	M ²	
		(2)			
		(278 TOTAL)			

DAILY TOTALS
NESTING GREEN TURTLES
FRENCH FRIGATE SHOALS, 1989

Page 5 of 5

Island: EAST

Date	# Turtles Up	# New Turtles IDed	# Nests	Invest.	Comments
09-01-90	4	0	0	KRN	Lots of Polzing - no nesting - Bright
09-02-90	2	0	2P	KRN	calm, windless, bright (almost full moon) & ...
9-03-90	5	0	4	aln	Full moon!!! Bright night. Low tide throughout most of night
9-04	6	0	2	aln	↓
9-05	1	0	1	aln	
9-06	0	0	0	aln	!!!
9-07	2	0	1	aln	Moon up ~ 2030. Bright.
9-08	1	0	1	aln	Moon up ~ 2145 almost 1/2; clear, starry night!
9-09	1	1	0	aln	Wow 2 new turt!! VERY jumpy (being!) DID NOT ENGRAVE
9-10	1	0	0	JLM	WINDY NIGHT, VERY LOW TIDE MOON UP ~ 2430
9-11	0	0	0	aln	
9-12	0	0	0	aln	No tracks at all. Windy
9-13	0	0	0	aln	No tracks. Cool & windy!! Huge rain squall 0120-0140 moving to south
9-14	1	0	0	aln	Dark; tide low @ 0500 storm/shower in am
9-15	1	0	0	aln	Last night; only 20-e, windy & rainy throughout the night. Goodbye turt! And east Isl!! ☹
		1	11		
132 NIGHTS					
MAY 6 - SEP 15, 90					
		TOTAL = 158	TOTAL = 521		
			∴ 3.3 NESTS PER TURTLE		

DAILY TOTALS
NESTING GREEN TURTLES
FRENCH FRIGATE SHOALS, ~~1989~~ 1990

Please return eventually to
G. BAUZ'S

HONOLULU LABORATORY
Southwest Fisheries Center
2570 Dole Street
Honolulu, HI 96822-2396

Island: EAST

new turts ID - turts that you read tags on and is not previously on Turt ID form.

Date	# Turtles Up	# New Turtles IDed	# Nests	Invest.	Comments
05-06-90	1	0	0	glw	Not collected but unable to read tags cloudy & rainy all night
05-07-90	2	1	0	glw	clear, windy, full moon low tide
5-08	1	0	1	glw	FIRST NEST OBSERVED!! 2:30am - cloudy + Vandal!! Clear, full moon, low tide
5-09	3	1	1	glw	other 2 turts engaged but no tags read. full moon up @ 2:05. Bright! Cloudy at 3am but still bright
5-10	5	2	0	glw	1 unknown
5-11	2	0	0	glw	1 unknown - had w pt, but couldn't read # clear night; moon up at 10:10pm.
5-12	NO TURTLE WORK ON EAST ISLAND				
5-13	1	0	0	glw	sleep berm on SE side of island. Windy, cool weather
5-14	2	2	1	glw	1/2 moon up at 1:00am; slight wind, few clouds.
5-15	2	1	0	glw	
5-16	1	0	0	glw	Windy; rain squall @ 3am
5-17	3	1	0	glw	Very cool & windy (~20K) rain squalls periodically aft. 3am; cloudy
5-18	3	0	0	glw	2 turts unknown
5-19	6	3	1	glw	Nice night; only small rain squalls.
5-20	6	2	1	RC	all turts swim & be skittish - no moon. (jumpy) (1 BASK on TurtSight)
5-21	9	4	2	RC	ONE RAIN SQUALL
5-22	8	2	4	RC	ONE ONE RAIN SQUALL (mostly clear)
5-23	13	3	2	RC	NO RAIN (wind) mostly cloudy LOST TAG W621 2 TURTS (UK)
5-24	5	2	2	RC	cloudy - few showers - no moon - jumpy turtles FOUND TAG W170 (ACT) (NEW MOON) (1:30)
5-25	6	4	2 IN 1 P	RC	one of the turts is a "probable"
5-26	12	4	4N, 1P	glw	clear night
5-27	15	3	2	glw	2 unknowns High tide early eve. Wed. clear; cloudy/rainy bet. 0500. Of the w3s & tide
5-28	9	1	1	glw	... lotsa purring and... numerous FPIS. Moon set @ 11:30 Rain after 3:30am.
5-29	9	1	2N, 1M	glw	Clear!! Slept @ 400
5-30	8	6	0	RC	~ 1/2 moon till 0600 (Br. 144) Low tide @ (prev. evening)
5-31	11	6	6	RC	First night with ~ 7:30 - 0:30 Low tide ONE NESTED IN DRYBANK - OTHER AFTER DAWN
6-1	7	4	2	RC	
6-2	10	1	0	RC	1 NEW ID, ANOTHER ONLY MONITOR.
6-3	13	6	5	glw	Clear!! Cloudy for per. detw. 2:45-2:50am 3/4 moon set at ~ 0315
6-4	16	2	7 !!	glw	Clear night!! No rain! Moon set @ 4:15

DAILY TOTALS
NESTING GREEN TURTLES
FRENCH FRIGATE SHOALS, 1989 90

Island: EAST

Date	# Turtles Up	# New Turtles IDed	# Nests	Invest.	Comments
6-05-90	18	1	6	glw	unknown turtles jumpy! Clear all night; full moon - set 0430.
6-06	14	3 *	1	glw	* is # C-25 already IDed for? Full moon, clear, warm; jumpy turtles... Ugh!
6-7	18 18	8	6	RC	Full moon, clear, warm ↳ Rise at 2000
6-8	22	4	5N/1P	RC	Full moon, rose at 2000 - clear, good (Seem to be winning early). (P-taken very much like a nest (had all signs) before)
6-9	23	8	7	RC	moon coming up later. TURTLES still coming up BEFORE SUNSET but then...
6-10	14	3	3	RC	TURTLES C-25, C-21, C-71 still up at 0515 - I went to sleep - returned at 0630 - still no sleep. (Return to WOOD)
6-11	11	2	7	glw	clear night, low tide. (High tide they did) SLEW out plenty nesting
6-12	15	2	4	glw	Ugh! Moon up at 2330. Turtles taking time getting down to business!
6-13	18		3N	glw	
6-14	17	5	2N, 1P	glw	Rain squalls thru/night (lasting ~ 20" at most) windy
6-15	15	5	4N, 1M	RC	" " " " " " Moon 2nd rise - (1)
6-16	16	6	5	RC	Few dark squalls - mostly - TURTLES LATE. moon coming up later, not at sunset.
6-17	18	1	1N/1P	RC	PLUED SEEM TO CONGRUATE ABOUT TO YOUNG STAGE AND IN JUMPER. MOST NESTS BECAME S. of 3. (few squalls) a few more nesting site by site. P = 0-15
6-18	13	2	6N/1P	RC	TURTLES STOOD ON NESTS thru/night, but - heavy rain at 2300 - some did come up at 0135 - start of rain + high wind - and few squalls (LAST TURTLES UP AFTER 0300)
6-19	15	0	3N/2P/1M	RC	SLEPT from 0445 - 6:10 and 6:20 - 7:20 Most turtles probably passed in the dawn. extremely low tide in AM - water at 0445/0523. Shimmer all on an all night, cold, windy.
6-20	13	0	4	glw	NOON - dark; windy; few rain squalls.
6-21	12	1 ^{MOON ONLY}	0	glw	NO TURTLE WALKS BTW 0115-0430 - LIGHTNING IN CLOUD AND RAIN (HUGE SQUALL fr. 0335-0415!!!)
6-22	16	1	2N, 1P 1N, 2P	glw	Black out; fairly clear throughout night REAL low tide at 0600
6-23	17	2 *	4N, 2P	glw	Clear night, ↓ tide early am.; silver moon set at 0430 * C-117 = C-52 ~ 2130
6-24	19	2	10	RC	C-117 was not included - was out a couple hours / was on 20 hrs. - great moon phases out all over island. TURTLES STAY - NOT many other turtles (lighting to the)
6-25	15	3, ^{1 moon only, 2 other}	7	RC	Still lighting to the S + E - some turtles up at 0135 - C-117 + moon set only. - only ~ 5 TURTLES UP past 0600 AM - 3 of them nested. - slow moon, lightning to N + S on an extremely dark night. DIRECTLY up to 2200, then again at 0330 - 0730 - few turtles on ground - only 4 turtles up past 1 - TURTLES JUMP
6-26	14	1	1	RC	
6-27	22	2	10N/1P	RC	P = 0-20 moon set up tonight. mostly clear. few squalls with 4-6 hrs. Turtles getting up all over. - in bushes + trees with some squalls - rain set at 1200. (1)
6-28	13	1	5	RC	Cloudy all night - no moon show. Rain squalls throughout night. BREAK AW. 0200-0300. NON
6-29	14	1 ^{Needs}	6	RC	Moon starts from 2000 - 2230. 2230 - sunrise rain squalls clouds, windy. (very windy). 1800 - 4th full moon
6-30	15	0	5	RC	Due to rain - many turtles did not get up out of the mud as norm. Rain began at 1800 hrs and did not let up until 7:30. Blowing in north and winds steady 20-30k. No moon show. pitch black.
07-01	18	2 ^{Needs}	4N, 1P	RC	Rain began at 1300 hrs and ended nonstop until 2100 (no moon show for 3 hrs (rain, wind + 25k. other rain)
7-2	17	3	7N, 1P	RC	P = 0-10 or until 0600 minutes of rain 2 of 10 hrs. (rain) - majority of these turtles that were 2-3 hrs. - a few not and others with weather (PARTY CLOUD)
7-3	15	3	7	RC	2 new IDs. Clear, warm, windy, 100% - 10-15 - 1 old ID (glw) - slow moon. Beginning dark by 2100, later moon (glw) - 2-3 hrs. - 1-2 hrs.
7-4	14	1	6N, 1P 170	RC	P = 0-10 Almost all moon - 1st night all night. 2nd day cloudy and getting down to its not very jumpy - 2nd night - 1-2 hrs up - 1st + 2nd = 1200.

DAILY TOTALS
NESTING GREEN TURTLES
FRENCH FRIGATE SHOALS, 1988 90

Pg 4 of 5

Island: EAST

Date	# Turtles Up	# New Turtles IDed	# Nests	Invest.	Comments
8-4-90	11	0	3	RC	Clear, low tide night, moon
8-5-90	15	0	4N, 1P	RC	Light moon & stars, lots of turtles up early; 3:17 AM high tide; moon set 11:15 AM; sunset 7:00 PM
8-6-90	13	0	6N, 1P, 1M	RC	Midnight, moon setting; clear - overcast; all day and some birds; 1P, 1M, 1J; mostly cloudy night; sunset at 5:26 PM; moon set at 11:14 PM; lots of turtles up early; all day 1 AM; sunset 7:00 PM; moon set at 11:14 PM
8-7-90	10	0	6	RC	Full moon, stars throughout night; moon setting; bright & clear; 1 AM of T-104; lots of turtles come up at 02:00, and some come up at 03:00
8-8-90	12	0	5	RC	Beautiful night - with one moon in the sky; clear & bright; moon setting; 1 AM of T-104; lots of turtles come up at 02:00, and some come up at 03:00
8-9-90	15	0	7	RC	Midnight moon in east - beautiful; but it was squally; lots of turtles up early; moon setting; clear & bright; moon setting; 1 AM of T-104; lots of turtles come up at 02:00, and some come up at 03:00
8-10-90	10	0	4N, 2P	GN JLM	SOME SQUALLS, CHILLY
8-11-90	10	0	3P, 1M	GN JLM	LOTS OF SHOOTING STARS, SEAL PUPPY BORN @ 2:30 - 00:00; C-106, C-104 CRAWLED ALL NIGHT!
8-12-90	10	0	6	gnw	Clear night 1/2 moon up at ~0100; lots of turtles up before 0200
8-13-90	8	0	5N, 1P	gnw	Clear, low tide throughout night; lots of nests!!
8-14-90	5	1	4N !!	gnw	Clear and cool; moon a sliver; slow turtle night; New ID was when fr. @ 1/3
8-15-90	2 !!!	0	0	gnw	WHEW ~ SLOW!! Another ebb... hopefully no for long; clear night.
8-16	8	2	2N, 1P	gnw	Clear night, breeze; 3 eggs collected from C-148 and C-149 ea.
8-17	7	0	2N, 2P	gnw	Clear & windy; one squall; 3 eggs collected from C-114 and C-134 ea.
8-18	4 !!	0	1	gnw	Dark ~ no moon, prob. new moon; clear w/ few squalls; Eggs (3) collected from 20-C Tern Turtle!
8-19	13	1	5N, 2P	gnw	Clear w/ rain squalls, windy; low tide @ sunrise; hard rain in late eve. 3 eggs coll. = C-138, 91, 90, 150
8-20	7	0	3	gnw	Clear w/ lite showers; 3 eggs coll. from C-56 & C-143 ea.
8-21	2	0	0	gnw	Squalls def. throughout night; huge one at 0515! YOUNG!!
8-22	6	0	3N ea	JLM	BIG SQUALLS, LOTS OF WIND, RIZZY GIRLS
8-23	5	0	3N	JLM	3 EGGS EA. COLLECTED FROM C-112 & C-133; CLEAR NIGHT, SQUALLS TO SOUTH
8-24	6	0	2N, 1M, 1P	JLM	HUGE METEOR @ 5:00 - LIT UP ENTIRE ISLAND!; WENT DOWN TO SOUTH RIZZY GIRLS...
8-25	6	0	3	GLN	1/4 moon set ~ 2040; Clear but windy
8-26	7	0	2	GLN	2137 hr C-35 Basking @ E end
8-27	2	0	1M	GLN	C-110 definitely did not nest; turtles seem to be just digging body pits - lots of from Hipper action of 1 def. did not nest
8-28	1	0	0	GLN	1730 hr C-35 and C-124 set @ 1/2 moon set @ ~ 0140; Basking @ NE end
8-29	2	0	1	gn	Heavy rain showers throughout night... 1930 sun set; C-35 B @ NE end; rain squalls throughout n
8-30	3	0	2	gn	No turtles till after 2250; Clear night!!
8-31	5	0	1N, 1M	gn	Clear night; low tide throughout night; 3:41 moon set @ 0330.

4

/99

DAILY TOTALS
NESTING GREEN TURTLES
FRENCH FRIGATE SHOALS, 1991

August
(8 is missing)

Land: EAST

Date	# Turtles Up	# New Turtles IDed	# Nests	Invest.	Comments
02-91	11	0	2N 3P	REC	WINDY (18-20K) / SQUALLS THROUGHOUT NIGHT / ~ 1/2 moon
03-91	11	0	2N	REC	WINDY (18-25K) lots of squalls. Seals very alert + jump to turtles seen at EASE AND SADDLED.
04-91	13	0	5N 3P	REC	WARM but WINDY (20K). Few squalls - squalls not as jump as night. TURTLES GETTING DOWN TO BUSINESS - BUT MANY CALM NITS.
05-91	5	1	4P	REC	WINDY + COLD / few heavy squalls. - ALL TURTLES UP AT 2:30 WHILE SLEPT 3:00-5:00. (TURTLES DOWN AT 5:00 - JUST 5:30-6:00 NO TURTLES UP - FLEET. VERY LOW MOON. (MOSTLY CLEAR)
06-91	4	0	1N 1P	REC	NO TURTLES UP ON 20YS, 2130 WALK, 2UP ON 2245 WALK SLOW NIGHT. WARM, 10-15 K WIND, DARK
07-91	4	0	1N 2P	SCS	LIGHT TO MODERATE BREEZE, PRACTICALLY 0 PRECIP. SILVER MOON. RISES 04:30. DARK NIGHT.
08-91	3	0	1N	SCS	LIGHT TO MODERATE BREEZE, WARM. DARK. 0 PRECIP. LIGHTNING IN ENE. SKIES STARTING 203:00.
09-91	7	0	2N 1P 2M	SCS	WINDS DANCED FROM VERY LIGHT ENE, TO DEAD CALM, TO VERY LIGHT ESE. DARK. WARM + HUMID. INTER. PRECIP.
10-91	8	0	2N 2P	SCS	LIGHT TO MODERATE BREEZE, ZERO TO INTER. PRECIP. DARK.
11-91	8	3	2N 3P	SCS	MODERATE BREEZE, WARM + COOLING AS DAWN APPROACHED. INTER. PRECIP. DARK.
12-91	6	0	2P	REC	WINDY (20-30K). Heavy rain (especially between 0230-270 and 0415-0510. DARK - COLD.
13-91	7	0	2N	REC	BEAUTIFUL NIGHT, WARM, CLEAR, CALM.
14-91	7	0	3N 1P	REC	Beautiful night, clear wind 5-mph.
15-91	8	1	1P	REC	SEPT between 2330-0230. Beautiful, warm, clear wind 5-10K THROUGH TO THE N @ 0530-06K
16-91	13	0	1N 2P	REC	Beautiful night mostly clear - few heavy squalls near WARM, calm (10-15K). ~ 1/2 moon.
17-91	13	0	2P 2N	SCS	MODERATE BREEZE, ZERO PRECIP. 1/2 MOON TILL 01:30.
18-91	7	0	1N 1P	SCS	MOONSET @ 02:20.
19-91	6	0	1N 1P	SCS	LIGHT TO MODERATE BREEZE, MOON ~ 2/3 BRIGHT.
20-91	6	0	1N	SCS	LIGHT COMFORTABLE BREEZE, 2/3 MOON TILL ~ 02:30 BRIGHT. ZERO TO INTER. PRECIP.
21-91	7	0	1N 1P	SCS	LIGHT COMFORT. BREEZE, INTER. PRECIP. BRIGHT MOON TILL 03:00.
22-91	6	0	1N 1P	REC, NTK	NO TURTLES UP BETWEEN 2330-0400. Few squalls, bright cool (15-20K)
23-91	7	0	2N 2P 1M	REC, NTK	Few squalls, bright moon (full?) warm. 12-18K wubs lots of activity for 26 # of tuts.
24-91	3	0	2N	REC, NTK	WET! lightning, full moon, mostly cloudy no turtles up between 2:30-5:30 wind 18-20
25-91	4	0	2N	REC	TITANIC LIGHTNING RAIN - ALMOST ALL NIGHT. WINDY WINDY (18-25K) - ALL TURTLES UP ON 20YS
26-91	5	0	2N	REC	VERY WINDY (18-25K). 1 SQUALL ~ 2300, CLEAR (LATE) BRIGHT. Generally nice night.
27-91	2	0	0	SCS	MODERATE BREEZE, ZERO TO INTER. PRECIP. BRIGHT AFTER 22:00
28-91	4	0	1P	SCS	
29-91	3	0	1N 1P	SCS	MODERATE BREEZE, INTER. LIGHT PRECIP. BRIGHT AFTER 22:15.
30-91	2	0	1N	SCS	LIGHT TO MODERATE BREEZE ZERO PRECIP. BRIGHT AFTER 22:30.
31-91	no	TURTLES	4P.		

DAILY TOTALS
NESTING GREEN TURTLES
FRENCH FRIGATE SHOALS, 1991

Island: EAST (91) DUPLICATE

Date	# Turtles Up	# New Turtles IDed	# Nests	Invest.	Comments
06-26	14	1	6N 2P	REC	
06-27	10	0	4N 1P	REC	
06-28	5	1	1N 1M	GCS	
06-29	6	1	1N 2P	GCS	
06-30	8	0	2N 2P	GCS	
07-01	10	0	1N 3P 3M	GCS	
07-02	10	0	2N 3P 3M	GCS	
07-03	11	1	4N	REC	
07-04	16	0	8N 1P	REC	
07-05	14	1	5N	REC	
07-06	12	2	5N	DRM REC	
07-07	19	0	8N 2P	REC	
07-08	16	1	1N 3P	DRM GCS	
07-09	10	1	1N 4P	GCS	max
07-10	9	0	3N	GCS	
07-11	3	0	1P	grey	
07-12	8	0	3N 3P	TRG	
07-13	8	1	2N 1P	REC	
07-14	10	0	2N 3P	REC	
07-15	12	0	5N 1P	REC	
07-16	10	0	3N - P ^M	REC	
07-17	11	0	7N	REC	
07-18	12	0	1N 2P	GCS	
07-19	10	0	4N 2P	GCS	
07-20	11	1	3N	GCS	
07-21	12	0	3N	GCS	
07-22	17	0	3N 1P	GCS	
07-23	7	0	2P 2M	REC	
07-24	9	0	1N	REC	
07-25	16	1	6N 2P	REC	

DAILY TOTALS
NESTING GREEN TURTLES
FRENCH FRIGATE SHOALS, 1991

1991

Island: DUPLICATE OF EAST ISLAND

Date	# Turtles Up	# New Turtles IDed	# Nests	Invest.	Comments
5/28	7	2	1	GS	
5-29-91	9	0	3N, 1M	GS	
5-30-91	10	1	3P, 3M	GS	
5-31-91	8	2	3N, 2P	GCS	
6-01-91	8	2	2P	BC	L-79 tumors
6-02-91	9	1	6N	BC	
6-03-91	9	3	3N 1P	BC	P is 99% sure of presence of tumor on flc L-51 R
6-04-91	5	1	1N 1M	BC	
6-05-91	11	2	6N	BC	
6-06	9	1	3N 1M	GCS	
6-07	8	1	1N, 1P, 2M	GCS	
06-08	12	3	2P 2M	GCS	
06-09	12	1	1N 3P 3M	GCS	
06-10	13	3	1N 4P	GCS	
06-11	11	3	1N 2P	GCS	
06-12	10	1	3N 4P 1M	GCS	
06-13	4	0	1N	REC	NEW I.D.; L-100 w/SM. TUMOR(S) ON RFF. TAG. NO. W/ST FOUND.
06-14	15	1	7N, 1M	REC	
06-15	7	0	3P	REC	
06-16	8	0	2N, 1P	REC	
06-17	6	0	1P 2M	GCS	
06-18	13	1	4P 3M 1N	GCS	
06-19	10	2	1N 2P	GCS	NOT ABLE TO MEASURE EMPLOYEE CASKER
06-20	12	3	2N 1M	GCS	
06-21	10	0	3N, 3P, 2M	GCS	
06-22	8	2	1P, 3P	JLM	
06-23	15	3	3N 1P 1M	JLM	
06-24	15	2	2N 1P	REC	
6-25	10	2	4N	REC	

DAILY TOTALS
NESTING GREEN TURTLES
FRENCH FRIGATE SHOALS, 1991

Island: EAST (91) DUPLICATE

Date	# Turtles Up	# New Turtles IDed	# Nests	Invest.	Comments
06-26	14	1	6N 2P	REL	
06-27	10	0	4N 1P	REL	
06-28	5	1	1N 1M	GCS	
06-29	6	1	1N 2P	GCS	
06-30	8	0	2N 2P	GCS	
07-01	10	0	1N 3P 3M	GCS	
07-02	10	0	2N 3P 3M	GCS	
07-03	11	1	4N	REL	
07-04	16	0	8N 1P	REL	
07-05	14	1	5N	REL	
07-06	12	2	5N	DKM REL	
07-07	19	0	8N 2P	REL	← JULY 7, 1991
07-08	16	1	1N 3P	DKM GCS	
07-09	10	1	1N 1P	GCS	WYS
07-10					
07-11					
07-12					
07-13					
07-14					
07-15					
07-16					
07-17					
07-18					
07-19					
07-20					
07-21					
07-22					
07-23					
07-24					

DAILY TOTALS
NESTING GREEN TURTLES
FRENCH FRIGATE SHOALS, 1991

7/01/91 10 TURTLES UP

Land: EAST

date	# Turtles Up	# New Turtles IDed	# Nests	Invest.	Comments
03-91	11	1	4N	REC.	Still night. Very warm. Clear. moonrise at MIDNIGHT.
04-91	16	0	8N 1P	REC.	BITTER. VERY WARM (FUT) - LOTS OF DIGGING ALL NIGHT BETWEEN COFFINS AND TENTS.
05-91	14	1	5N	REC.	RHU.
06-91	12	2	5N	REC/DKM	Km McDermans spent night to see what it is no shut. Beautiful night, calm/warm/clear.
07-91	19	0	8N 2P	REC.	AT DAWN, 10 TURTLES UP IN VICINITY OF TENTS, all digging. Beautiful night / DARK!
08-91	16	1	1N 2P 2M	GS/DKM	
09-91	10	1	1N 4P 2M	GCS	
10-91	9	0	3N 2M	GS	
11-91	3	0	1P	GS	
12-91	8	0	3N 3P	GS	
13-91	8	1	2N 1P	REC.	WARM. 10-15K WIND. few squalls. VERY DARK from 0130 → 0500.
14-91	10	0	2N 3P	REC.	CALM + WARM. EGGS EXPOSED ON SW SHORE due to erosion
15-91	12	0	5N 1P	REC.	Beautiful night. 8-12K wind. Clear warm.
16-91	10	0	2N 3P 1M	REC.	1st KNOWN HATCHING (TRANSPARENT NEST) @ 2:30 1/2 AM, HIGH TIDE
17-91	11	0	7N	REC.	SUNNY, WARM, BREEZY, CLOUDY ALL NIGHT.
18-91	12	0	1N 2P	SCS	HALF MOON BRIGHT TILL ~ 00:00. WARM BREEZE, 10-20 KT. EASTERLY. NO PRECIP.
19-91	10	0	4N 2P	SCS	BRIGHT, 2/3 FULL MOON TILL ~ 02:00 LITTLE OR NO RAIN, WARM BREEZE 10-15 KTS.
20-91	11	01	3N	SCS	BRIGHT MOON TILL ~ 02:45 INTER. RAIN (RAIZZO), MOD. BREEZE.
21-91	12	0	3N	SCS	BRIGHT (2/3) MOON TILL 0300. MOD. BREEZE ~ 10-20 KT. INTER. PRECIP.
22-91	17	0	3N 1P	SCS	BRIGHT MOON TILL ~ 03:30. LIGHT BREEZE ZERO TO VERY LITTLE PRECIP.
23-91	7	0	2P 2M	REC.	SLEET FROM 0230 - 0100, BRIGHT MOON TURTLES BUSY AND ALMOST LOOKING WARM. 8-12K WIND NO RAIN
24-91	9	0	1N	REC.	FIRST NEST LID HATCHED. CLEAR, BRIGHT, WARM. (SUNRISE AT 0500) NOT MUCH DIGGING. TURTLES INDOOR. ALMOST FULL MOON 2P. BIRY CASE. WARM. BRIGHT, 8-12K WIND. CLEAR. few squalls late.
25-91	16	1	6N 3P	REC.	Very windy, sunny (10-20K) gusty. full moon
26-91	11	0	3N 1P	REC.	
27-91	13	0	5N 4P	REC.	3P + 7P & SUN, less wind tonight/leave/bright, no squalls TURTLES GETTING DOWN TO IT. NOT MANY RAISE PTS.
28-91	6	0	1N	SCS	VERY BRIGHT MOON. MODERATE BREEZE, WARM. INTERMITTENT PRECIP.
29-91	12	0	1N 3P	SCS	
30-91	10	1	1N 1P 1M	SCS	VERY BRIGHT MOON FROM 2230 → DAWN. MOD. BREEZE INTERMITTENT PRECIP.
31-91	7	0	4P	SCS	MOD. BREEZE, WTER. PRECIP. BRIGHT MOON RISE @ ~ 2300.
01-91	6	0	2N 1P 1M	SCS	VERY BRIGHT MOON, RISE ~ 23:25 → DAWN. LIGHT BREEZE, INTER. PRECIP. ☺

July (7 is missing) (NO see previous sheet)

DAILY TOTALS
NESTING GREEN TURTLES
FRENCH FRIGATE SHOALS, 1991

Island: EAST

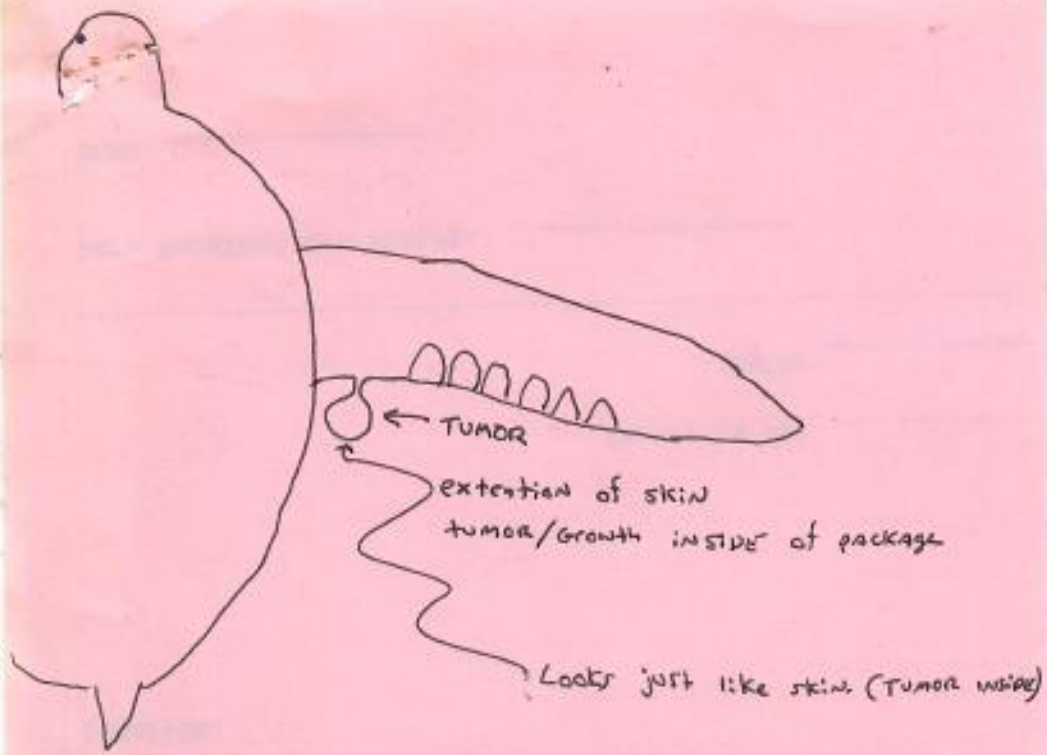
Date	# Turtles Up	# New Turtles IDed	# Nests	Invest.	Comments
08-02-91	11	0	2N 3P	REC	WINDY (10-20 K) / SQUALLS THROUGHOUT NIGHT / $\frac{1}{2}$ MOON.
08-03-91	11	0	2N	REC	WINDY (10-15K) / lots of squalls. Seals very alert + jump. TURTLES SEEN AT 6:50 AM SUBMERGED.
08-04-91	13	0	5N 3P	REC	WARM but windy (20K). Few squalls - TURTLES NOT AS JUMPY AS USUAL. TURTLES COMING DOWN TO BEACHES - NOT MANY CALIP NITS.
08-05-91	5	1	4P	REC	WARM + COLD / few heavy squalls. + NO TURTLES UP AT 2:30 UNLESS TURT 3:00-5:00. (TURT DOWN AT 5:00 - TURT 5:30-6:00 NO TURT UP. - TURT VERY ROW NIGHT. (MOON CLEAR)
08-06-91	4	0	1N 1P	REC	NO TURT UP ON ROYS, 2:30 WALK, 2 UP ON 22ND WALK SLOW NIGHT! WARM, 10-15 K WIND, DARK
08-07-91	4	0	1N 2P	SCS	LIGHT TO MODERATE BREEZE, PRACTICALLY 0 PRECIP. SILVER MOON. RISE @ 04:30. DARK NIGHT.
08-08-91	3	0	1N	SCS	LIGHT TO MODERATE BREEZE, WARM. DARK. 0 PRECIP. LIGHTNING IN ENE. SNIES STARTING @ 03:00.
08-09-91	7	0	2N 1P 2M	SCS	WINDS DANCED FROM VERY LIGHT ENE, TO DEAD CALM, TO VERY LIGHT ESE. DARK. WARM + HUMID. INTER. BREEZE
08-10-91	8	0	2N 2P	SCS	LIGHT TO MODERATE BREEZE, ZERO TO INTER. PRECIP. DARK.
08-11-91	8	3	2N 3P	SCS	MODERATE BREEZE, WARM + COOLING AS DAWN APPROACHED. INTER. PRECIP. DARK.
08-12-91	6	0	2P	REC	WINDY (20-30 K). Heavy Rain (especially between 0230-7:30 and 04:15-05:10). DARK - COLD.
08-13-91	7	0	2N	REC	BEAUTIFUL NIGHT, WARM, CLEAR, CALM.
08-14-91	7	0	3N 1P	REC	Beautiful moon, calm wind 5-10K.
08-15-91	8	1	1P	REC	SEPT between 2330-0230. Beautiful, warm, clear. Wind 5-10 THROUGH TO TWO N @ 05:30 - 06:30
08-16-91	13	0	1N 2P	REC	Beautiful night, mostly clear - few heavy squalls w/ rain. WARM, CALM (10-15K). $\frac{1}{2}$ MOON.
8-17-91	13	0	2P 2N	SCS	MODERATE BREEZE, ZERO PRECIP. $\frac{1}{2}$ MOON TILL 01:30.
8-18-91	7	0	1N 1P	SCS	MOONSET @ 02:20.
8-19-91	6	0	1N 1P	SCS	LIGHT TO MODERATE BREEZE, MOON - $\frac{2}{3}$ BRIGHT
8-20-91	6	0	1N	SCS	LIGHT COMFORTABLE BREEZE, $\frac{2}{3}$ MOON TILL ~ 02:30 BRIGHT. ZERO TO INTER. PRECIP.
8-21-91	7	0	1N 1P	SCS	LIGHT COMFORT. BREEZE, INTER. PRECIP. BRIGHT MOON TILL 03:00.
8-22-91	6	0	1N 1P	REC, NJK	NO TURT UP between 2330-0400. few squalls, bright moon (15-20K)
8-23-91	7	0	2N 2PM	REC, NJK	few squalls, BRIGHT MOON (full?) WARM. 12-18K WIND. Lots of activity for the # of tuts.
8-24-91	3	0	2N	REC, NJK	WET! lightning, full moon, mostly cloudy no turt up between 2:30-5:30 wind 18-20
8-25-91	4	0	2N	REC	THUNDER, LIGHTNING, rain - almost all night. WIND WINDY (18-25K) - NO TURT UP ON 20th
8-26-91	5	0	2N	REC	VERY WINDY (18-25K) - 1 SQUALL ~ 2:00, CLEAR (MOON BRIGHT. Greeny nice night.
8-27-91	2	0	0	SCS	MODERATE BREEZE, ZERO TO INTER. PRECIP. BRIGHT AFTER 22:00
8-28-91	4	0	1P	SCS	
8-29-91	3	0	1N 1P	SCS	MODERATE BREEZE, INTER. LIGHT PRECIP. BRIGHT AFTER 22:15.
8-30-91	2	0	1N	SCS	LIGHT TO MODERATE BREEZE. ZERO PRECIP. BRIGHT AFTER 22:30.
8-31-91	no	Turtles	up.		

DAILY TOTALS
NESTING GREEN TURTLES
FRENCH FRIGATE SHOALS, 1991

1991

Island: EAST

Date	# Turtles Up	# New Turtles IDed	# Nests	Invest.	Comments
07-03-91	11	1	4N	REC.	Still night. Very warm. Clear. Moonrise ~ MIDNIGHT.
07-04-91	16	0	8N 1P	REC.	DRY. VERY WARM (HOT) & LOTS OF DIGGING all night between collars and tents.
07-05-91	14	1	5N	REC.	D.H.O.
07-06-91	12	2	5N	REC/DKM	Ken McDermans spent night to see what it is all about. Beautiful night. Calm/warm/clear.
07-07-91	19	0	8N 2P	REC.	AT 0600, 10 TURTLES UP IN VICINITY OF TENT, all digg. Beautiful night / DARK!
07-08-91	16	1	1N 2P 2M	GS/DKM	
07-09-91	10	1	1N 4P 2M	GCS	
07-10-91	9	0	3N 2M	GS	
07-11-91	3	0	1P	GS	
07-12-91	8	0	3N 3P	GS	
07-13-91	8	1	2N 1P	REC	WARM. 10-15K WIND. few squalls. VERY DARK from 0130 → 0600.
07-14-91	10	0	2N 3P	REC	CALM + WARM. EGGS EXPOSED ON SW SHORE due to erosion
07-15-91	12	0	5N 1P	REC	Beautiful night. 8-12K wind. Clear + warm.
07-16-91	10	0	2N 3P 1M	REC	1st KNOWN HATCHING (TRANSPLANTED NEST) @ 2036 1/2PM, HIGH TIDE
07-17-91	11	0	7N	REC.	SUNNY, WARM, BREEZY, CLOUDY all night.
07-18-91	12	0	1N 2P	CSGS	HALF MOON BRIGHT TILL ~ 00:00. WARM BREEZE, 10-20 KT. EASTERLY. NO PRECIP.
07-19-91	10	0	4N 2P	CSGS	BRIGHT, 2/3 FULL MOON TILL ~ 02:00 LITTLE OR NO RAIN, WARM BREEZE 10-15 KTS.
07-20-91	11	01	3N	CSGS	BRIGHT MOON TILL ~ 02:45 INTER. RAIN (DARK), MOD. BREEZE.
07-21-91	12	0	3N	CSGS	BRIGHT (2/3) MOON TILL 0300. MOD. BREEZE ~ 10-20 KT. INTER. PRECIP.
07-22-91	17	0	3N 1P	CSGS	BRIGHT MOON TILL ~ 03:30. LIGHT BREEZE ZERO TO VERY LITTLE PRECIP.
07-23-91	7	0	2P 2M	REC	WENT FROM 0230 - 0400, BRIGHT NIGHT TURTLES OUT AND START LOOKING. WARM. 8-12K WIND NO RAIN.
07-24-91	9	0	1N	REC	FIRST NEST LID HATCHED. CLEAR, BRIGHT, WARM. (FOUN AT 0500) NOT MUCH DIGGING. TURTLES UNDERGROUND. ALMOST FULL MOON. 2K WIND. CLEAR WIND FOR A SHORT WHILE. LAST LID HATCHED IN 2P. BIRY CARE. WARM, BRIGHT, 8-12K WIND. CLEAR. few squalls late.
07-25-91	16	1	6N 3P	REC	Very windy, squally (10-20K) gusty. full moon
07-26-91	11	0	3N 1P	REC	
07-27-91	13	0	5N 4P	REC	3P = 99% sure, less wind tonight/night/bright, no squalls. TURTLES GETTING DOWN TO IT. NOT MANY FALSE PTS.
7-28-91	6	0	1N	CSGS	VERY BRIGHT MOON. MODERATE BREEZE, WARM INTERMITTENT PRECIP.
7-29-91	12	0	1N 3P	CSGS	
7-30-91	10	1	1N 1P 1M	CSGS	VERY BRIGHT MOON FROM 2230 → DAWN. MOD. BREEZE INTERMITTENT PRECIP.
7-31-91	7	0	4P	CSGS	MOD. BREEZE, WTER. PRECIP. BRIGHT MOON RISEN @ ~ 2300.
8-01-91	1	0	2N 1P 1M	CSGS	VERY BRIGHT MOON, RISE ~ 23:25 → DAWN. MOD. BREEZE, WTER. PRECIP.



DAILY TOTALS
NESTING GREEN TURTLES
FRENCH FRIGATE SHOALS, 1991

p. 1 of

1991

Island: EAST

Date	# Turtles Up	# New Turtles IDed	# Nests	Invest.	Comments
MAY 2-3	—	—	—	—	2 nests laid between 2+3 MAY
4 MAY	2	2	1	GES, KRN	CAMP STARTED
5 MAY	0	0	0	GES	
6 MAY	1	0	0	GES	
7 MAY	2	1	0	GES	Probable nest.
8 MAY	2	2	1	GES	Maybe nest.
9 MAY	4	2	2	GES	
10 MAY	5	3	2	GES	one nest for certain, one probable.
11 MAY	7	3	4	JLM	HEAVY RAIN SQUALLS MADE TURTLES LITTLE LOSS OF FALSE NEST RESULTS
12 MAY	3	0	1	JLM	
13 MAY	3	1	2	JLM	1 hole dicks
14 MAY	3	2	0	GES	
15 MAY	5	2	3	GES	
16 MAY	4	2	1	GES	
17 MAY	4	2	4	GES	
18 MAY	4	1	3	KRN	
19 MAY	5	3	2	KRN	
20 MAY	6	4	1	GES	3/4 of 1, 1/4 of 2, 1/4 of 3, 1/4 of 4
21 MAY	5	0	1	GES	nest
22 MAY	9	2	2	GES	1 nest, 1/4 of 4, 1/4 of 5
23 MAY	11	4	2N, 1P	GES/REC	1 nest, 1/4 of 1, 1/4 of 2, 1/4 of 3, 1/4 of 4
05-24-91	7	2	3N	REC	all nests full so new 30 is with 1st stage but did not see "A" series today. 1st stage 1st, 2nd stage 2nd, 3rd stage 3rd.
05-25-91	8	0	2N, 2P	REC	1st stage 1st, 1st stage 2nd, 2nd stage 1st, 2nd stage 2nd.
05-26-91	9	3	2	REC	On first walk, 3 or 4 U.K.B. birds at 11:00 from island. Almost full moon - birds were jumping W up 15-20K miles.
05-27-91	7	2	2	REC	full moon, very windy (25-30). At least 2 birds up from island. 1st stage 1st, 1st stage 2nd.
05-28-91	7	2	1	GES	FULL MOON. BRIGHT. WINDS 20-25 KTS. GES
05-29-91	9	0	3N, 2M	GES	Full moon.
05-30-91	10	1	2P, 4M	GES	
05-31-91	8	2	3N, 2P	GES	

DAILY TOTALS
NESTING GREEN TURTLES
FRENCH FRIGATE SHOALS, 1991

Island: DUPLICATE OF EAST ISLAND

Date	# Turtles Up	# New Turtles IDed	# Nests	Invest.	Comments
5/28	7	2	1	GS	
5-29-91	9	0	3N, 1P	GS	
5-30-91	10	1	3P, 3M	GS	
5-31-91	8	2	3N, 2P	GCS	
6-01-91	8	2	1P	BC	L-77
6-02-91	9	1	6N	BC	
6-03-91	9	3	3N 1P	BC	Plus 20% since
6-04-91	5	1	1N 1M	BC	
6-05-91	11	2	6N	BC	
6-06	9	1	3N 1M	GCS	
6-07	8	1	1N, 1P, 2M	GCS	
06-08	12	3	2P 2M	GCS	
06-09	12	1	1N 3P 3M	GCS	
06-10	13	3	1N 4P	GCS	
06-11	11	3	1N 2P	GCS	
06-12	10	1	3N 4P 1M	GCS	
06-13	4	0	1N	REC	NEW I.D.; L-100 W/SM: TUMOR(S) ON RFF. TAG. NO. W/ST FOR
06-14	15	1	7N, 1M	REC	
06-15	7	0	3P	REC	
06-16	8	0	2N 1P	REC	
06-17	6	0	1P 2M	GCS	
06-18	13	1	4P 3M 1N	GCS	
06-19					NOT ABLE TO MEASURE CARAPACE LENGTH

DAILY TOTALS
NESTING GREEN TURTLES
FRENCH FRIGATE SHOALS, 1991

Island: EAST (91) DUPLICATE

Date	# Turtles Up	# New Turtles IDed	# Nests	Invest.	Comments
06-26	14	1	6N 2P	REC	
06-27	10	0	4N 1P	REC	
06-28	5	1	1N 1M	GCS	
06-29	6	1	1N 2P	GCS	
06-30	8	0	2N 2P	GCS	
07-01	10	0	1N 3P 3M	GCS	
07-02	10	0	2N 3P 3M	GCS	
07-03	11	1	4N	REC	
07-04	16	0	8N 1P	REC	
07-05	14	1	5N	REC	
07-06	12	2	5N	DKM REC	
07-07	19	0	8N 2P	REC	
07-08	16	1	1N 3P	DKM GCS	
07-09	10	1	1N 4P	GCS	WJ
07-10	9	0	3N	GCS	
07-11	3	0	1P	greg	
07-12	8	0	3N 3P	TRJ	
07-13	8	1	2N 1P	REC	
07-14	10	0	2N 3P	REC	
07-15	12	0	5N 1P	REC	
07-16	10	0	3N 1P ^M	REC	
07-17	11	0	7N	REC	
07-18	12	0	1N 2P	GCS	
07-19	10	0	4N 2P	GCS	
07-20	11	1	3N	GCS	
07-21	12	0	3N	GCS	
07-22					
07-23					
07-24					

DAILY TOTALS (PM-AM) FOR ADULT FEMALE GREEN TURTLES NESTING
AT EAST ISLAND, FRENCH FRIGATE SHOALS

1993

1993 DATE	TOTAL NO. TURTLES UP	NO. OF NEW TURTLES IDed	NUMBER OF NESTS N/P/M	YOUR NAME	COMMENTS
5/31/93	17	17	3M	AW SP	
6/1	23	10	1P	AW SP	
6/2	20	7	1N, 2P, 1M	SP	
6/3	18	9	1P, 1M	AW	
6/4	18	10	3M	AW	
6/5	26	11	1N, 4M	AW	
6/6	32	13	2N, 2P, 5M	AW	
6/7	27	7	1P, 4M	AW	
6/8	36	17	2N, 2P, 1M	SP	
6/9	24	8	2N, 4P	SP	
6/10	29	13	1N, 1P	SP	
6/11	29	11	2N, 2P, 1M	SP	
6/12	25	6	2P, 2M	AW	
6/13	28	4	2N, 2P	AW	
6/14	22	4	1P, 4M	AW	
6/15	20	1	1N, 1M	AW	
6/16	20	4	2N	SP	
6/17	27	3	2N, 1P, 1M	SP	
6/18	19	1	2N, 1M	SP	
6/19	27	4	1N, 1P	SP	
6/20	30	5	2N, 1P	AW	
6/21	31	3	2P, 1M	AW	
6/22	22	2	2N, 1P, 2M	AW	
6/23	24	3	1N, 2M	AW	
6/24	24	1	1N	SP	
6/25	31	3	1N, 2P, 1M	SP	
6/26	38	1	2N, 2P, 3M	SP	
6/27	34	1	2N, 1P	SP	

26
nights

DAILY TOTALS (PM-AM) FOR ADULT FEMALE GREEN TURTLES NESTING
AT EAST ISLAND, FRENCH FRIGATE SHOALS

RETURN TO G. BALAZS

1994

1994 DATE	TOTAL NO. TURTLES UP	NO. OF NEW TURTLES IDed	NUMBER OF NESTS N/P/M	YOUR NAME	COMMENTS
6-8-94	9	8	0	AW	
6-9-94	13	10 ^{1st pos.} - permanent	0	AW	
6-10-94	15	4 ⁵	1m	AW	
6-11-94	10	5	1M 1P	AW SP	
6-12-94	16	8	3M	SP	
6-13-94	10	4	3N	SP	turned - 124 not turned - 105
6-14-94	16	9	2N, 1P	SP	
6-15-94	22	11	2N, 1M	AW	
6-16-94	21	12	1N 2P 3M	AW	
6-17-94	18	10	1N 1P 1M	AW	
6-18-94	11	5	2M, 1P, 1N	AW	
6/20	14	9	1N 1P	SP	
6/21	12	2	3N	SP	
6/22	7	2	2N	SP	
6/23	14	9	1N, 1P	SP	
6/23	19	4	1N, 5M	AW	
6/24	15	1	1N, 1P, 3M	AW	
6/25	17	2	2N, 4M	AW	
6/26	13	1	1N 2P 1M	AW	
6/27	14	2 0	1N 1P 1M	SP	
6/28	17	0	2N 2P 3M	SP	
6/29	14	1	3N, 2P	SP	
6/30	20	2	3N, 1P	SP	
7/1	17	0	1N, 1M	AW	
7/2	10	1	0 2N	AW	
7/3	10	0	2M	AW	

GHB
sent ↓

6/8-7/3/94

RETURN TO G. BALAZS

DAILY TOTALS (PM-AM) FOR ADULT FEMALE GREEN TURTLES NESTING
AT EAST ISLAND, FRENCH FRIGATE SHOALS

1994 DATE	TOTAL NO. TURTLES UP	NO. OF NEW TURTLES IDed	NUMBER OF NESTS N/P/M	YOUR NAME	COMMENTS
6-8-94	9	8	0	AW	
6-9-94	13	10 ^{1st pos.} - part	0	AW	
6-10-94	15	4 [*]	1m	AW	
6-11-94	10	5	1M 1P	AW SP	
6-12-94	16	8	3M	SP	
6-13-94	10	4	3N	SP	toured - 124 next tour - 105
6-14-94	16	9	2N, 1P	SP	
6-15-94	22	11	2N, 1M	AW	
6-16-94	21	12	1N 2P 3M	AW	
6-17-94	18	10	1N 1P 1M	AW	
6-18-94	11	5	2M, 1P, 1N	AW	
6/20	14	9	1N 1P	SP	
6/21	12	2	3N	SP	
6/22	7	2	2N	SP	
6/23	14	9	1N, 1P	SP	
6/23	19	4	1N, 5M	AW	
6/24	15	1	1N, 1P, 3M	AW	
6/25	17	2	2N, 4M	AW	
6/26	13	2	1N 2P 1M	AW	
6/27	14	2 1	1N 2P	SP	
6/28	17	0	2N 2P 3M	SP	
6/29	14	1	3N, 2P	SP	
6/30	20	2	3N, 1P	SP	
7/1	17	0	1N, 1M	AW	
7/2	10	1	0 2N	AW	
7/3	10	0	2M	AW	

GHB
start

6/8-7/3/94

RETURN TO G. BACA.

DAILY TOTALS (PM-AM) FOR ADULT FEMALE GREEN TURTLES NESTING
AT EAST ISLAND, FRENCH FRIGATE SHOALS

1994 DATE	TOTAL NO. TURTLES UP	NO. OF NEW TURTLES IDed	NUMBER OF NESTS N/P/M	YOUR NAME	COMMENTS
6-8-94	9	8	0	AW	
6-9-94	13	10 ^{1st part}	0	AW	
6-10-94	15	4 ⁵	1m	AW	
6-11-94	10	5	1M 1P	AW	
6-12-94	16	8	3M	SP	
6-13-94	10	4	3N	SP	March - 127 markings - 105
6-14-94	16	9	2N, 1P	SP	
6-15-94	22	11	2N, 1M	AW	
6-16-94	21	12	1N 2P 3M	AW	
6-17-94	18	10	1N 1P 1M	AW	
6-18-94	11	5	2m, 1P, 1N	AW	
6/20	14	9	1N 1P	SP	
6/21	12	2	3N	SP	
6/22	7	2	2N	SP	
6/23	14	9	1N, 1P	SP	
6/23	19	4	1N, 5M	AW	
6/24	15	1	1N, 1P, 3M	AW	
6/25	17	2	2N, 4M	AW	
6/26	13	2	1N 2P 1M	AW	
6/27	14	2	1N 2P 1M	SP	
6/28	17	0	2N 2P 3M	SP	
6/29	14	1	3N, 2P	SP	
6/30	20	2	3N, 1P	SP	
7/1	17	0	1N, 1M	AW	
7/2	10	1	2M	AW	
7/3	10	0	2M	AW	

1995

DAILY TOTALS (PM-AM) FOR ADULT FEMALE GREEN TURTLES NESTING AT EAST ISLAND, FRENCH FRIGATE SHOALS

1995
DATE TOTAL NO. TURTLES UP NO. OF NEW TURTLES IDed NUMBER OF NESTS N/P/M YOUR NAME COMMENTS

1995 DATE	TOTAL NO. TURTLES UP	NO. OF NEW TURTLES IDed	NUMBER OF NESTS N/P/M	YOUR NAME	COMMENTS
1-24 June 8	24	24	U=3 P=3 M=0	YS/KT	
5-37 June 9	23	13	N=1 P=2 M=0	YS	
37A-50 June 10	25	14	N=0 P=4 M=6	YS	
51-67 June 11	26	17	U=1 P=0 M=1	YS	add 1 in"
68-70 June 12	17	3	N=0 P=6 M=1	KT	
71-88 June 13	27	18	U=1 P=2 M=3	KT	
89-105 June 14	34	17	U=3 P=8 M=4	KT	
106-115 June 15	27	10	U=0 P=4 M=2	YS	
116-134 June 16	33	19	N=2 P=9 M=0	YS	
135-148 148A-149 June 17	31	16	U=2 P=6 M=1	YS	
150-173 June 18	42	24	U=3 P=5 M=2	YS	
174-186 176A June 19	36	14	U=2 P=1 M=8	KT	
187-194 June 20	37	8	U=4 P=2 M=5	KT	
195-196 June 21	42	4	U=6 P=7 M=4	KT	
199-200 June 22	26	2	N=3 P=6 M=5	YS	
201-204 June 23	24	4	U=1 P=3 M=6	YS	
205-209 June 24	28	5	N=2 P=6 M=1	YS	
210 June 25	24	1	N=2 P=3 M=4	KT	
211-212 June 26	29	2	U=2 P=7 M=3	KT	↑ 1 in
213-214 June 27	29	2	U=4 P=7 M=2	KT	
215 June 28	32	1	U=5 P=2 M=3	KT	
216-218 June 29	30	3	U=1 P=6 M=8	YS	
June 30	27	0	U=0 P=7 M=3	YS	
219-221 July 1	24	3	N=0 P=3 M=4	YS	
222-225 July 2	42	4	N=2 P=6 M=4	KT	
226-230 July 3	46	5	N=6 P=10 M=7	KT	
231 July 4	31	1	U=3 P=4 M=3	KT	
232-235 July 5	33	1	N=4 P=5 M=7	KT	

DAILY TOTALS (PM-AM) FOR ADULT FEMALE GREEN TURTLES NESTING
AT EAST ISLAND, FRENCH FRIGATE SHOALS

1995
DATE TOTAL NO. TURTLES UP NO. OF NEW TURTLES IDed NUMBER OF NESTS N/P/M YOUR NAME COMMENTS

236-235	July 6	24	3	U = 2 P = 9 H = 4	VS	
236	July 7	20	1	U = 1 P = 6 H = 2	VS/AN	w/wn Ass: Edna Mgr. Anthony Krogstad
237	July 8	32	1	N = 1 P = 4 H = 3	VS	

240 - 31 nights

DAILY TOTALS (PM-AM) FOR ADULT FEMALE GREEN TURTLES NESTING
AT EAST ISLAND, FRENCH FRIGATE SHOALS

1995 DATE	TOTAL NO. TURTLES UP	NO. OF NEW TURTLES IDed	NUMBER OF NESTS N/P/M	YOUR NAME	COMMENTS
1-24 June 8	24	24	N=3 P=3 H=0	YS/KT	
25-37 June 9	23	13	N=1 P=2 H=0	YS	
37A-50 June 10	25	14	N=0 P=4 H=6	YS	
51-67 June 11	26	17	N=1 P=0 H=1	YS	add 1m
68-70 June 12	17	3	N=0 P=6 H=1	KT	
71-88 June 13	27	18	N=1 P=2 H=3	KT	
89-105 June 14	34	17	N=3 P=8 H=4	KT	
106-115 June 15	27	10	N=0 P=4 H=2	YS	
116-134 June 16	33	19	N=2 P=9 H=0	YS	
135-148 148A-149 June 17	31	16	N=2 P=6 H=1	YS	
150-173 June 18	42	24	N=3 P=5 H=2	YS	
174-186 176A June 19	36	14	N=2 P=1 H=8	KT	
187-194 June 20	37	8	N=4 P=2 H=5	KT	
195-198 June 21	42	4	N=6 P=7 H=4	KT	
199-200 June 22	26	2	N=3 P=6 H=5	YS	
201-204 June 23	24	4	N=1 P=3 H=6	YS	
205-209 June 24	28	5	N=2 P=6 H=1	YS	
210 June 25	24	1	N=2 P=3 H=4	KT	
211-212 June 26	29	2	N=2 P=7 H=3	KT	
213-214 June 27	29	2	N=4 P=7 H=2	KT	
215 June 28	32	1	N=5 P=2 H=3	KT	
216-218 June 29	30	3	N=1 P=6 H=8	YS	
June 30	27	0	N=0 P=7 H=3	YS	
219-221 July 1	24	3	N=0 P=3 H=4	YS	
222-225 July 2	42	4	N=2 P=6 H=4	KT	
226-230 July 3	46	5	N=6 P=10 H=7	KT	
231 July 4	31	1	N=3 P=4 H=3	KT	
232-235 238 July 5	33	1	N=4 P=5 H=7	KT	

NMFS, HONOLULU LAB
Marine Turtle Research
2570 Dole Street
Honolulu, HI 96822-2396

DAILY TOTALS (PM-AM) FOR ADULT FEMALE GREEN TURTLES NESTING
AT EAST ISLAND, FRENCH FRIGATE SHOALS

1995
DATE TOTAL NO. TURTLES UP NO. OF NEW TURTLES IDed NUMBER OF NESTS N/P/M YOUR NAME COMMENTS

233-235	July 6	24	3	N = 2 P = 9 H = 4	YS	
236	July 7	20	1	N = 1 P = 6 H = 2	YS/AN	with Asst. Ldr. Mgr. Anthony Viegand
237	July 8	32	1	N = 1 P = 4 H = 3	YS	

240 - 31 nights

BALAZS
2002

DAILY TOTALS (PM-AM) FOR ADULT FEMALE GREEN TURTLES NESTING AT EAST IS. FRENCH FRIGATE SHOALS NMFS, HONOLULU LAB Marine Turtle Research 2570 Dole Street Honolulu, HI 96822-2396

N=447

DATE	TOTAL NO. TURTLES UP	NO. OF NEW TURTLES IDed	NUMBER OF NESTS N/P/M	YOUR NAME	COMMENTS
6/3	16	16	0N, 1P, 0M	AD/EG	Training Night #1, not a full night of walks. Moon @ 7/8 full
6/4	25	22	2N, 0P, 0M	AD/EG	just shadowed Erin
6/5	39	30	0N, 3P, 2M	AD	8 mom + pups, kept me from getting to a bunch of turtles
6/6	50	41	6N, 1P, 1M	AD	7 mom + pups new, still tight getting around. Nice night.
6/7	55	32	2N, 3P, 5M	AD	Few squals, turtle plowed the fence. Saw a tiger, think it got a pup/low moon
6/8	29	10	1N, 0P, 0M	AD	Header squals, seals higher, up couldn't get to a lot of turtles
6/9	36	23	2N, 3P, 1M	AD	More sharks, only saw one fledgling and it made it!
6/10	40	22	0N, 0P, 3M	EG	No moon seals making it difficult to get around. Great first night!
6/11	36	19	1N, 1P, 4M	EG	No moon, rainy and nasty seals higher, got up and in larvae & ty's than usual. Seals make very little. Great not full night
6/12	30	20	2N, 2P, 3M	EG	night though! over 30 pit tags in ☺
6/13	34	21	1N, 0P, 13M	EG	
6/14	49	21	2N, 1P, 6M	AD	Good first night back, getting a little moonlight now. Twin pups!!
6/15	50	14	0N, 2P, 3M	AD	Beautiful night, very mellow wind, seals sound asleep.
6/16	42	12	2N, 1P, 3M	AD	On and off squals through the night, got bad about 4:30 am
6/17	62	14	4N, 1P, 2M	AD	
6/18	58	6	5N, 2P, 10M	geg	Seals clumped together missed very few turtles, lots of resights. great weather & light rain on/off all night, seals were great only missed 1 new lette.
6/19	70	15	4N, 3P, 20M	geg	
6/20	61	12	1N, 2P, 4M	geg	Rain on and off, high winds - flashlight trouble
6/21	58	6	0N, 3P, 6M	geg	NASTY weather winds over 30k rained all night nice night, kinda mellow. Moon is bright.
6/22	58	8	2N, 2P, 10M	AD	Finally found shredder! Yeah! Beautiful night
6/23	-	-	-	AD	
6/24	37	7	1N, 2P, 5M	AD	Seal trapped me inside all night. Bastard! Data night.
6/25	43	8	4N, 3P, 2M	AD	Beautiful again, low tide, full moon lots of NEEDS LIST turtles to do
6/26	51	12	3N, 2P, 2M	geg	Light rain, seals great busy with NEEDS turtles
6/27	53	7	3N, 0P, 4M	geg	Light rain, seals great again Nice moon
6/28	50	5	2N, 1P, 4M	geg	Moon up late, Nice weather "zigzagging" cause of seals
6/29	59	11	2N, 1P, 3M	AD	
6/30	58	6	0N, 0P, 5M	AD	

NO

BALAYS

DAILY TOTALS (PM-AM) FOR ADULT FEMALE GREEN TURTLES NESTING AT EAST IS. FRENCH FRIGATE SHOALS NMFS, HONOLULU LAB Marine Turtle Research 2570 Dole Street Honolulu, HI 96822-2396

2002

DATE	TOTAL NO. TURTLES UP	NO. OF NEW TURTLES IDed	NUMBER OF NESTS N/P/M	YOUR NAME	COMMENTS
7/1/02	51	1	1N, 1P, 0M	AD	
7/2/02	38	1	1N, 0P, 1M	AD	
7/2/02	42	4	1N, 2P, 4M	AD	
7/4/02	62	9	2N, 4P, 0M	eg	moon up late, slow getting around - seals Squall passed over for 40 min
7/5/02	39	3	1N, 1P, 2M	eg	NASTY weather
7/6/02	32	4	1N, 0P, 2M	eg	Stack in tent for hrs heavy wind Heavy winds, rained on and off all night. Literally crawled to get out! Seals?!
7/7/02	40	5	2N, 2P, 1M	eg	Rained all night, windy and cold last night got to a lot of turtles! Had to sit out for a while, but don't think I missed any females
7/8/02	-	-	-	eg	
7/9/02					Breakdown
		TOTAL =			
		447			

DAILY TOTALS (PM-AM) FOR ADULT FEMALE GREEN TURTLES NESTING AT EAST ISLAND FRENCH FRIGATE SHOALS **2003** RETURN TO GEORGE BALAZS

NMFS, HONOLULU LAB
Marine Turtle Research
2570 Dole Street
Honolulu, HI 96822-2396

IMPORTANT DATA

DATE	TOTAL NO. TURTLES UP	NO. OF NEW TURTLES IDed (MOTO TOOL)	NUMBER OF NESTS N/P/M	YOUR INITIALS	COMMENTS (weather, special observations)
5/22/03	14	14	N-11-② P-11-③ M-1-①	gf	Training night, Erin and Joe on island. Moon rose very late. Started walks at 9:30pm and completed them at 4:30am.
5/23/03	13	9	N-0-① P-1-① M-11-②	gf	Training night - Joe lead and did 1/2 night by himself
5/24/03	13	9	N-1-① P-1-① M-1-①	gf	Partial night - 4 walks ending at 5:00am
5/25/03	13	8	N-1-① P-1-① M-111-④	gf	First Full Night! No additional turtles appeared after #40 lighted at 0121 #39 SMOOC after BF at 0701
5/26/03	14	11	N-111-③ P-1-① M- -①	gf	- 11 New turtles! "Liamet" (122C) came up - 2 pictures crawling to water
5/27/03	22	12	N 11 ② P 11 ② M 11 ②	gf	Switchout of techs, Erin's 1st night on. No moon. Squalls almost solid from 4:30am → 8am. wet morning!
5/28/03	17	11	N 1 ① P 11 ③ M 1 ①	gf	Erin's 2nd night on. Weather was nice - only one squall around 1am. Still no moon.

DAILY TOTALS (PM-AM) FOR ADULT FEMALE GREEN TURTLES NESTING AT EAST ISLAND FRENCH FRIGATE SHOALS

2003

NMFS, HONOLULU LAB
Marine Turtle Research
2570 Dole Street
Honolulu, HI 96822-2396

RETURN TO
GEORGE BAUZZ

DATE
AM-PM

TOTAL NO. TURTLES UP

NO. OF NEW TURTLES IDed (M&D TDDL)

NUMBER OF NESTS N/P/M

YOUR INITIALS

COMMENTS (weather special observations)

DATE AM-PM	TOTAL NO. TURTLES UP	NO. OF NEW TURTLES IDed (M&D TDDL)	NUMBER OF NESTS N/P/M	YOUR INITIALS	COMMENTS (weather special observations)
5/29/03	17	10	N III (3) P I (1) M II (2)	egf	Another moonless night, but NO RAIN! I WAS actually wishing for some by about 5:30 - eating some serious dust (Thank you B3! She had great aim!)
5/30/03	18	8	N I (1) P II (2) M III (3)	egf	Dusty, Dusty, Dusty! Seats made it VERY difficult to get around. Called off Jam walk after sitting in the rain for 40 minutes → Super high! Harder to tell on spit - At most, over 2.
5/31/03	14	10	N - I - (1) P - I - (1) M - III - (3)	JA	The sooty Terns have taken over East
6/1/03	22	11	N - III - (3) P - III - (3) M - 0 - 0	JA	A Current Mornat sunrise. Rain with the foggy when she get back out "Loni" #106 came up and nested
6/2/03	27	16	N - - 0 P - II - (2) M - III - (2)	JP	- Biggest night yet - Windy after a cool day - A few sand nests might come in early June with 2-4 swell
6/3/03	28	10	N - III - (3) P - II - (2) M - IF (3)	JP	- Dense Cloud Cover - Returns from 5/22/03 (checked A7 Tags - Good!)
6/4/03	22	5	N (0) P (1) M - (5)	egf	Rough night - Only got in 3 walks. Not much activity, island Really quiet. (except for the sooties, of course) missed ~2 turtles due to proximity to seats.

IMPORTANT DATA

DAILY TOTALS (PM-AM) FOR ADULT FEMALE GREEN TURTLES NESTING AT EAST ISLAND FRENCH FRIGATE SHOALS

NMFS, HONOLULU LAB
Marine Turtle Research
2570 Dole Street
Honolulu, HI 96822-2396

RETURN TO
GEORGE
BAUZS

2003

DATE PM-AM	TOTAL NO. TURTLES UP	NO. OF NEW TURTLES IDed (MOTO TOOL)	NUMBER OF NESTS N/P/M	YOUR INITIALS	COMMENTS (Weather Special Observations)
6/5/03	16	6	N III (4) P I (1) M III (4)	gfg	Another quiet night. Wondering what this will mean for season total?.. Weather nice, breezy and no rain. Moon up 1st half of walk.
6/6/03	18	5	N II (2) P I (1) M II (2)	gfg	Slow night! Not many seals or turtles up really. fast getting around. Started 4pm walk late - turtle at fence, entrapped turtle - wow! Not much wind, really hot. Nice moon, waves pushing beam back North and South.
6/7/03	28	5	N II (2) P III (3) M IIII (5)	gfg	Squall came through and hung around before 1st walk got a late start, but HOORAY - Rain! 2 more squalls throughout the night, but welcome ones before that NO wind and HOT! Nice to see more hum up 4 a change!
6/8/03	23	6	N I (1) P III (3) M IIII (6)	gfg	Fairly cool and windy - felt nice. 1/2 way through 2nd walk seals converged around the spit and could not get to beach for remaining walks. Tracked NWS by 4:30 (land) NO rain squall - 40 mph High winds and COLD! Beautiful sunrise :)
6/9/03	28	7	N - III (3) P - IIII (4) M - IIII (4)	gfg	Sunset Walk - 41 turtles basking @ SE Point; 250 basking on East → 123 KBP @ Sunset, unknown Green (2:30 @ SW point after net attempt → Much of SW point eroded → 2 short squalls / Cloudy after 3 → Very Windy after 5 (I have 1:30 AM IP)
6/10/03	20	3	N - III (3) P - (0) M - III (3)	gfg	→ Sunset Walk - 53 baskers @ SE Pt. 265 baskers on East - Very Windy → On 1:00 walk around 2:15 am from SW Point - <u>Major</u> in East sky → Brief squalls - winds 20-25 knd s. → Seals roared at Point & S. Shore (159 in middle)
6/11/03	28	2	N - II (2) P - (0) M - IIII (4)	gfg	→ Sunset Walk - 55 baskers SE Pt. 260 on East → Strong Winds > 20 knots → New turtles are down → Seals crowding free spit & S Shore

IMPORTANT DATA

DAILY TOTALS (PM-AM) FOR ADULT FEMALE GREEN TURTLES NESTING AT EAST ISLAND FRENCH FRIGATE SHOALS

NMFS, HONOLULU LAB
Marine Turtle Research
2570 Dole Street
Honolulu, HI 96822-2396

RETURN TO
GEORGE BAUMS
COMMENTS (weather & special observations)

2003

DATE AM-PM	TOTAL NO. TURTLES UP	NO. OF NEW TURTLES IDed (MOTO TDDL)	NUMBER OF NESTS N/P/M	YOUR INITIALS	COMMENTS
6/12/03	32	3	N - II - (2) P - III - (5) M - III - (4)	ga	Sunset Walk - 60 Bushes SE Pt. ≥ 65 Bushes on East → Strong Gusts (> 20 knots) → Unable to get to in turtle 300 walk (between adult & juv) → No Rain - Good 1/5 moon
6/13/03	26	2	N II (2) P III (3) M II (2)	gfy	Relentless Wind!! All day all night and in to take next day. Enough to knock you down! Turtles clustered in same spots rest of island empty. One new turtle beat me to water, missed her! :-(Wax what a moon :-(
6/14/03	27	4	N I (1) P II (2) M III (5)	gfy	Started 3rd walk late felt really sick. Squall came through while in tent - managed to catch up and still finish 6 walks. Winds still really high - Calipers were
6/15/03	15	0	N (0) P (0) M III (4)	gfy	Wow! Mother nature was flexing her muscles tonight! Tried 1st walk in crazy wind, but had to give up. Got in a 3am walk and Tam walk. Super high winds and cold rain - thought the tent was
6/16/03	29	3	N III (3) P (0) M III (3)	gfy	Another nasty weather night. Got behind on walk due to squalls, but was able to catch up and complete 6 molters on island. Still seeing attempts at copulation, vegetation decreasing.
6/17/03	25	6	N - I - (1) P - II - (2) M - II - (2)	ga	Sunset walk - 20 Bushes @ SE Pt. ≥ 26 on East → Rain throughout 90'ish walk → Soaked to the bone - Rain throughout the night
6/18/03	23	2	N - I - (1) P - I - (0) M - III - (4)	ga	Sunset Walk - 11 Bushes SE Pt. ≥ 18 Bushes on East → Flood Bridge - No rain

IMPORTANT DATA

DAILY TOTALS (PM-AM) FOR ADULT FEMALE GREEN TURTLES NESTING AT EAST ISLAND FRENCH FRIGATE SHOALS

RETURN TO GEORGE BAUZS
 NMFS, HONOLULU LAB
 Marine Turtle Research
 2570 Dole Street
 Honolulu, HI 96822-2396

2003

DATE AM-PM	TOTAL NO. TURTLES UP	NO. OF NEW TURTLES IDED (MOTO TOOL)	NUMBER OF NESTS N/P/M	YOUR INITIALS	COMMENTS (weather & special observations)
6/19/03	29	3	N-11-② P-1-① M-11-②	gf	Sunset Walk 24 Baskers SE Pt. 72 33 Baskers on East → 8 seals on N. Shore between 1st Terodaphnia & Tent (Small 4 on log) → Healthy wind (15-20 kts) → 2 short 3 minute showers
6/20/03	39	1	N-III-④ P-I-① M-III-⑥	gf	→ Sunset Walk → 13 Baskers NE Pt. → 28 Baskers SE Pt. ≥ 46 Baskers on East → Good weather - sprinkle during 300 walk → lots of old, 1 new
6/21/03	23	0	N II ② P I ① M III ③	eg	Nasty Squall around 3, but other than that Great weather! Moon up very late now. Slow night. NO new turtles! (☹)
6/22/03	16	0	N II ② P III ③ M III ④	eg	Extremely difficult getting around 1st half of night. Got easier as night progressed. Started re-spraying mototools for longer re-visit possibility. Nice weather
6/23/03	17	1	N I ① P I ① M III ③	eg	less baskers up the last couple of days. Much easier to get around tonight and FABULOUS weather. (Until Tan squall, that is!) Were have all the honu gone
6/24/03	19	0	N II ② P II ② M II ②	gf	More baskers up tonight expected it to be busier. - as at SEP and during night there were always at least 5 So; Glass dump. - just not their night, I guess Great weather again - Aloha!
6/25/03	29	6	N-III-③ P-II-② M-I-①	gf	→ Sunset Walk - 17 Baskers NE Pt, 29 Baskers SE Pt. ≥ 48 Baskers on East → Light winds - Calm weather night → The rookies are coming up

IMPORTANT DATA

DAILY TOTALS (PM-AM) FOR ADULT FEMALE GREEN TURTLES NESTING
 AT EAST ISLAND FRENCH FRIGATE SHOALS

RETURN TO
 GEORGE BAUMS
 NMFS, HONOLULU LAB
 Marine Turtle Research
 2570 Dole Street
 Honolulu, HI 96822-2396
 (Weather Special Observations)

DATE TOTAL NO. TURTLES UP NO. OF NEW TURTLES IDed (MOTO TDDL) NUMBER OF NESTS N/P/M

YOUR INITIALS

COMMENTS

DATE	TOTAL NO. TURTLES UP	NO. OF NEW TURTLES IDed (MOTO TDDL)	NUMBER OF NESTS N/P/M	YOUR INITIALS	COMMENTS
6/26/03	24	1	N-1-① P-III-③ M-III-⑤	J	Sunset Walk - NE Pt. 9 Baskers, SE Pt. 44 Baskers, \approx 57 Baskers on East \rightarrow Heat Weather
6/27	40	1	N-1-② P-III-③ M-III-⑧	J	\rightarrow Sunset Walk NE Pt. 15 Baskers, SE Pt. 42 Baskers, \approx 60 Baskers on East \rightarrow Heavily Windy No Rain, Heat Weather Turtles thought so too! Record night for the year.
6/28	23	0	N-III-④ P-III-③ M-11-②	J	Sunset Walk - NE Pt. 12 Baskers, SE Pt. 38 Baskers, \approx 51 Baskers on East; Wind 25-30 Knots
6/29	23	0	N-III-③ P-III-③ M-III-③	J	Sunset Walk - NE Pt. 5 Baskers, SE Pt. 41 Baskers, \approx 49 Baskers on East; Lots of Brief Struggling; Last Water Toggled in
6/30	27	2	N-1-① P-11-② M-11-②	J	Sunset Walk - 49 Baskers, SE Pt. \approx 52 Baskers on East; Overcast 1" 3 walks Clear Last 3; Who needs a Bath? Sunset Wind \approx 7 Knots blew stick off me; Watering begins at dawn in front of stand
7/1/03	29	1	N-III-③ P-1-① M-III-⑦	J	Sunset Walk - 7 Baskers NE Pt., 50 Baskers SE Pt., \approx 60 Baskers on East; Heat night; strong Winds, no Rain; Clarity of pictures tonight for studying #14 Jamartha; I'm not ready to leave!

IMPORTANT DATA

East Island Turtle Report, 1992
U.S. Fish and Wildlife Service
Timothy B. Clark

I. East Island

East Island accommodated 387 identified nesting green sea turtles (*Chelonia mydas*) this season. This is the largest nesting effort in nineteen years of monitoring turtles on East Island (Figure 1). There were 28 Tumor afflicted turtles, comprising only 7.2 % of the population.

Turtle camp started May 1, 1992 and ended September 9, 1992 due to the threat of hurricane Iniki. Two turtles were up on May 1 and one was up on September 9. The first nest laid was on May 2. In previous years turtle camp was ended after four nights of no turtles on the island. This year camp was closed before that criteria could be met and it is probable that turtles were still nesting after the closing date. June 18, September 7, and September 8 were missed due to sickness or extreme weather. A total of 129 nights were spent monitoring turtles on East.

There were 850 possible nests recorded on East Island this year. Eggs were seen for 244 nests. Turtles were seen patty-caking 212 probable nests, and there were 394 maybe nests where turtles were seen backfilling. The high numbers of turtles this year created problems in recording the number of nests laid. Turtle walks could take over two hours on nights with lots of turtles up, especially if they had lots of needs (tags, measurements, exams, moto-tools, or all three in the case of new id's). We would usually take a break after each turtle walk, sometimes up to an hour, meaning that 3-4 hours might pass between sightings of individual turtles. Turtles seen during one walk could easily lay eggs and leave before we could get to that area again. This would cause fewer nesting turtles to be recorded than actually occurred.

Turtle U166 was sacrificed on August 1 due to multiple shark injuries. The turtle was found in the shorebreak on the north side of East with both front flippers and its left hind flipper missing. The right hind flipper had teeth marks from a shark but was not severed. The turtle was alive but had limited mobility. After contacting Honolulu it was decided to sacrifice the turtle. A necropsy was preformed and the results sent to Honolulu.

II. Tern Island

Eighty six turtles were identified as nesting on Tern island this season. Eight turtles had tumors recorded, comprising 9.3 % of the population.

One to two turtle walks were taken each night starting on April 22 and lasting until September 21. The first turtle tracks were seen on April 23 and the first turtle on April 26. The first nest was laid on April 27. The last turtle seen crawling on Tern was sighted on September 17. Two turtles came up after turtle walks were stopped and probably nested on September 27 and October 11.

Fifty three nests of varying certainty were recorded. Twenty one had turtles seen laying eggs and were definite nests, 10 were seen patty-caking and are probably nests, and 22 were considered maybe nests because the turtles were backfilling.

III. Tumored turtle study:

The tumored turtle study did not go well this year. Twenty seven tumored and control nests were marked this season. Controls were never found for tumor nests T-12 or T-14. Nine nests were dug up and eggs were found. The high numbers of turtles this season hampered our efforts to mark nests. On busy

nights we were not able to routinely check on nesting tumored turtles without interrupting our walks. Many tumored nests were missed because we did not get back to them in time to see eggs laid and mark the nest. As the season progressed and we had fewer turtles nesting we were able to mark more tumored turtle nests, but this was late in the season and the turtles hatched after turtle camp was taken down, making it necessary for special trips to be taken to East to dig up the nests.

Several stakes marking the nests were dug up by turtles nesting nearby. One stake had two nests laid within a foot of each other, making it hard to determine which nest was staked. Flagging tape placed in some of the nests helped to identify the nest as a study nest, but the tape must be placed with the eggs upon laying or it gets moved around by the turtles patty-caking.

IV. Weed eradication:

Setaria took over East Island. When turtle camp was started the weeds were under control and we were able to pull all the sprouts before they developed seeds. In late July and early August we received some rain showers and the weeds started getting ahead of what we could manage by ourselves. Several trips were made by Tern Island personnel to help pull weeds and we were able to get them back to a manageable level, although weed levels were still high. Heavy rains fell again in early September, right before turtle camp ended, causing East Island to sprout a lush covering of vegetation. Several trips were taken to East after turtle camp was closed, but the *Setaria* had already sprouted and spread its seeds.

If *Setaria* is to be seriously controlled more effort will need to be spent removing it from East Island. Periods after heavy rains pose the largest problem since the level of effort needed to pull the young plants before they sprout is more than the turtle people can manage by themselves. A large seed bank is also developing where the pulled *Setaria* is being piled and a feasible means of disposing of all the plants must be developed. This year we burnt bags of plants in a fuel barrel with limited success. A quicker means might be to periodically do a mass burning of plants away from areas with birds.

V. Data notes:

East Island

Moto-tool numbers U30 through U406 were used this year on East Island. Three numbers in this series were not used: U286, U341, and U 374. U286 and U289 both are listed with tag numbers A920, A921, and A922. This is probably one turtle, and I have changed it to U289 in the database. U341 was skipped completely during the season. U374 was changed to U377 after discovering that it had been assigned two moto-tool numbers. On 7/26 it was tagged with F286 LHF but only a U-3 could be engraved on its carapace before it crawled into the water. The next night the same turtle came up and was engraved as U377. The LHF tag F286 was read and the partially completed moto-tool was seen to link the two moto-tools together. For simplicity I have used U377 throughout the database.

Nine turtles were not assigned moto-tool numbers but did have tags recorded to identify them. Six of these have only a LHF tag recorded and are listed as "UK" under the moto-tool heading. The LHF tags for these turtles are A830, A841, A862, F222, F279, F335, and F339. Three turtles had multiple tags identifying them but no moto-tool number. These were assigned the moto-tool numbers UK1 (tags 9869, 9870, and 9871), UK2 (tags 9341, F609, F610, and F611), and UK3 (tags F615 and F616).

Entries with no known moto-tool numbers (UK) in the sightings data totaled 146. Fourteen of these entries had one or more tags recorded identifying them as one of the nine turtles in the ID database with tags read but no assigned moto-tool number. The remaining 137 turtles were not identified by tags or moto-

tool number for one of three reasons: 1) they crawled into the water before identification could be made, 2) they were too close to a seal to approach them without disturbing the seal, or 3) the turtle was digging an egg chamber or laying eggs and we did not want to disturb the turtles nesting activity.

Tags A428 - A950, F103 - F350, F358 - F384, and F401 - F618 were used on East this season. Tags misapplied and recovered are A456, A467, A468, A469, A474, A490, A501, A512, A513, A514, A515, A516, A518, A519, A522, A530, A532, A534, A579, A601, A618, A661, A667, A680, A682, A683, A722, A723, A738, A800, A801, A832, F109, F124, F126, F139, F147, F149, F182, F189, F191, F247, F270, F284, F288, F294, F340, F411, F429, F432, F474, F536, and F580. Tags lost are A836, F128, F146, F344, and F433. Tags not listed in the database but that were not collected are A472, A477, A478, A491, A499, A511, A567, A595, A602, A652, A928, A929, A930, A941, F219, F258, F287, F444, F445, F461, F462, F463, F464, and F465. Tags A151, A152, A154, A155, F103, F104, and F105 were used to test pliers. Tags that were misapplied but remain on the turtle are listed in the database with a comment saying they are misapplied. Tags listed in this way were applied but did not fasten correctly to the flipper, either because the tab on the tag did not bend back or the tab bend back before going through the hole in the tag. Some of the misapplied tags were re-read later in the season.

Tag A942 is recorded as being applied to both U125 and U293 on 6/19. It probably belongs to U125, although I have left it listed with both turtles in the database.

F345 is recorded as belonging to both U362 on 7/23 and to U377 on 7/27. I can not determine which turtle it belongs to so I left it recorded for both turtles.

Nine turtles (11U, 13U, 31U, 41U, 42U, 43U, 45U, 47U, and 73U) were originally moto-tooled on Tern but were later sighted on East. Only five of these showed up in the ID data since four (11U, 13U, 45U, and 47U) were not tagged, examined, or measured on East.

Tern Island

Moto-tool numbers 10U through 75U were engraved on Tern Island turtles. Moto-tool numbers 57U and 59U have been eliminated because they were on turtles that had two moto-tool numbers and have been replaced by 74U and 68U respectively.

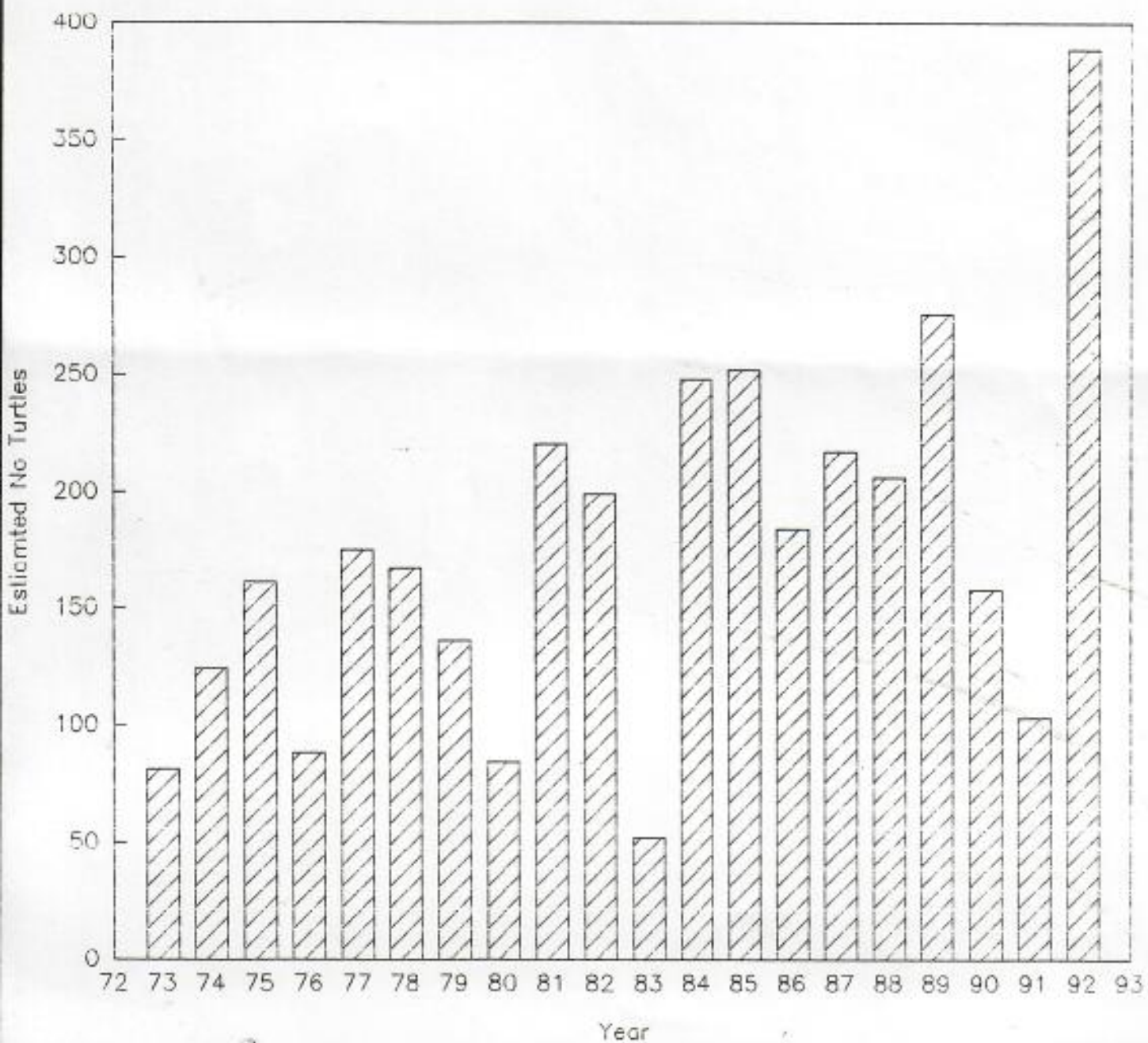
Twenty turtles were tagged but never moto-tooled. These are designated by a UK for a moto-tool number in the database files. Six of these had multiple tags and have a number after the UK to designate one turtle.

There were 63 turtles with unknown moto-tools sighted on Tern throughout the season. Thirty five of these had no tags to identify them.

Twelve turtles that were originally moto-tooled on East were sighted on Tern. These are U94, U109, U160, U217, U222, U232, U265, U270, U285, U355, U361, and U388. Turtles U232, U355, and U388 were identified, tagged, measured, and/or examined on Tern.

Tags used on Tern Island this season were A951 - A999, F351 - F357, F385 - F400, F851 - F880, and W965 - W997. Tags misapplied and recovered are F363, F870, F874, F875, and W994. Tag A954 was lost and never recovered. Tag W171 was found but was not from any series applied this year. Tags not in the database and not recovered are A957, F376 - F384, and W968. Tag A981 is recorded as belonging to both 48U and 56U. It is not clear to which turtle it actually belongs.

Figure 1. Green Sea Turtle Nesting at East Island, French Frigate Shoals, 1972 - 1992.



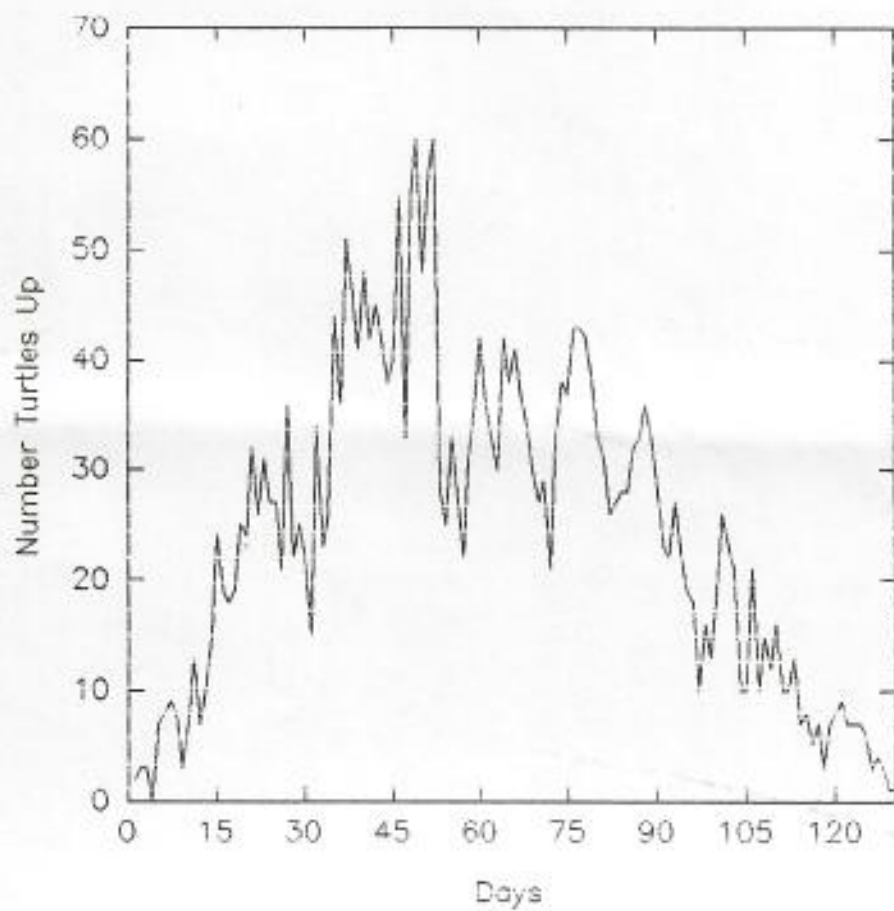


Figure 1: Number of turtles active each night on East Island during the 1992 fields season.

GREEN TURTLE NEST/HATCHING SUCCESS FORM

Year 1972

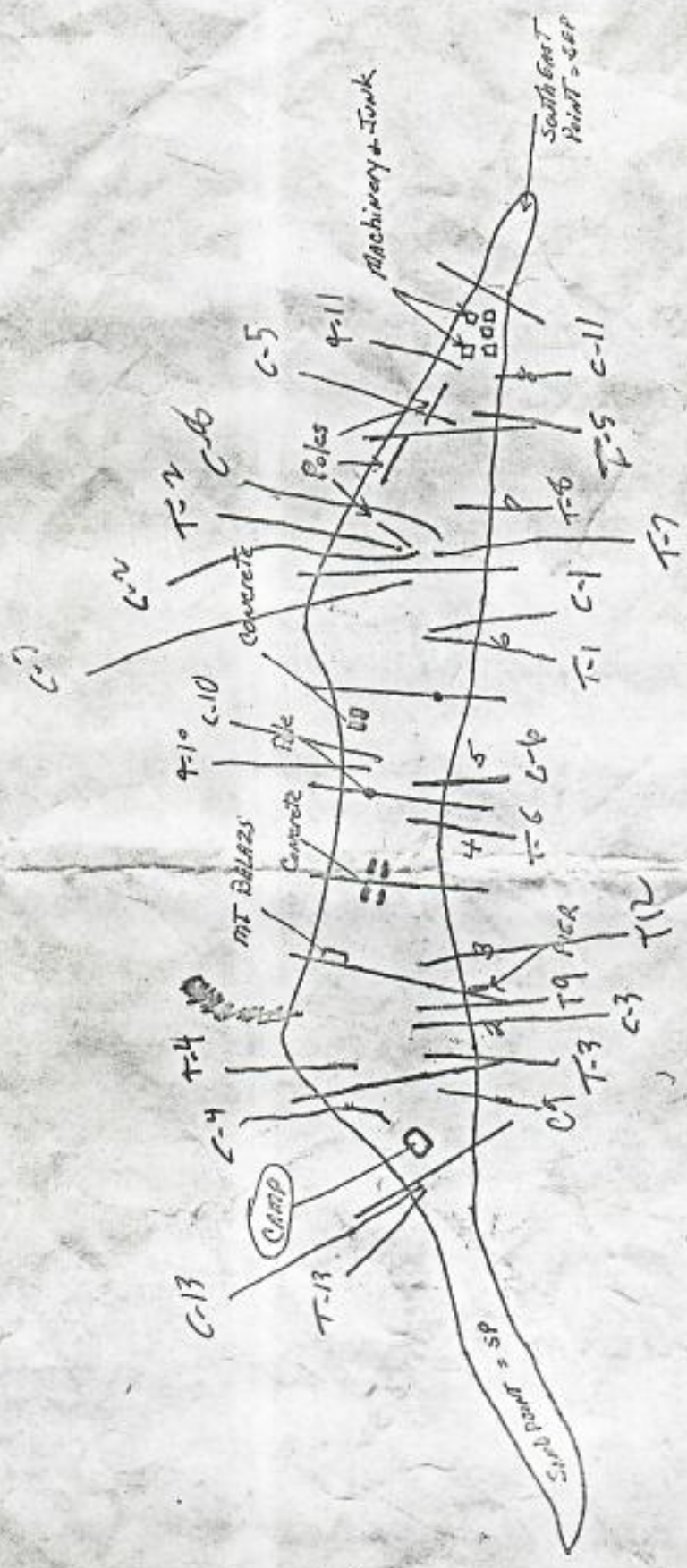
Island Cat

Nest #	Lay date	Location		ID #	Hatch date	Pre-hatch pit?	Total of eggs	Total of live hatch turts	# trap turts escape	Dead but developed			Total EGGS	COMMENTS	
		EW	NS							full	%	↓			
T-1	5/7/92			6-76										Can't find eggs	
T-2	5/9/92			6-84										Stake dug up	
C-1	5/19/92			6-76										Stake missing	
T-3	5/21/92			6-76			49						6	7 Partially developed. To decompose to sell	
T-4	5/27/92			4149										Can't find eggs	
C-3	5/28/92			11-6			57	1			3	4	2	5	
C-2	5/29/92			6-71											
F-5	5/4/92			6-85			99	12			2		1		
T-6	6/6/92			6-84			62	0			0	0	0	0	Dug on 10/17
C-4	6/11/92			6-128			38	0			0	0	0	0	Dug on 13/19
C-9	6/19/92			6-117											
T-7	6/27/92			6-85			120	0			0	0	0	0	Can't find eggs
C-7	7/1/92			6-179			120	0			0	0	0	0	Can't find eggs
C-5	7/1/92			6-121							1	0	0	0	Can't find eggs
T-8	7/16/92			6-190			47	21	0		0	0	0	0	Can't find eggs. Stake pins too by
T-9	8/6/92			6-236											
T-10	8/10/92			6-296											
C-10	8/10/92			247											
T-11	8/10/92			6-399	10/19	Y	71	74	0		0	0	1	0	2 accts found white diggy. may have been same over, noted pit.
C-11	8/12/92			6-265											
T-12	8/16/92			6-307											
C-9	8/16/92			6-204											
T-13	8/17/92			6-403											
C-13	8/17/92			6-52											
T-14	9/20/92			6-40											

collected 5 turts for genetic from same site not dig up

6-403

- T-1
- T-2
- T-3
- T-4
- T-5
- T-6
- T-7
- T-8
- T-9
- T-10
- T-11
- T-12
- T-13
- C-1
- C-2
- C-3
- C-4
- C-5
- C-6
- C-7
- C-8
- C-9
- C-10
- C-11
- C-13



Balays

East Island Turtle Report, 1993
U.S. Fish and Wildlife Service
Alyssa E. Ward
Susan L. Pultz

I. General Monitoring

The 1993 turtle season was a short season consisting of only one month of monitoring. There were 176 nesting green sea turtles (*Chelonia mydas*) identified on East Island during this time as calculated from the ID data.

31 nights

Turtle Camp began on May 31, 1993 and ended June 30, 1993 according to schedule. Each night consisted of five turtle walks around the island at 21:00, 23:00, 1:00, 3:00, and 5:00 (sunset to sunrise). This meant that no more than two hours lapsed between turtle sightings. Due to the duration between walks, it is possible that some turtles that were up crawling or digging false pits were not seen. However, it is unlikely that those turtles that actually nested were not recorded as being up.

There were 110 possible nests recorded on East Island this year. Eggs were witnessed for 36 of these nests. Turtles were seen covering egg chambers (patty-caking) for 32 nests and backfilling 42 nests.

II. Data Notes

Moto-tool numbers S1 through S176 were used during the 1993 season. The turtle identified as S7 was also given the ID S26. All entries for this turtle in the data base should be listed as S7. There was one turtle this season without a moto-tool identification. This turtle, listed as UK (unknown) in the both the ID and sightings files, did have tags. Only one turtle (S50) was not given any permanent identification (i.e. tagged). All other turtles have at least one tag.

Tags F- through U- were used on East this season. Tags missapplied and recovered are: F-74, F-76, F-711, F-726, F-727, F-732, F-733, F734, F-735, F-801, F-804, F-810, F-811, U-70, U-103, U-106, U-138, U-145, U-165, U-256, and U-261. Tags lost: F-77, F-701, F- 719 and F-809. One tag was listed as missapplied and left on: F-813.

III. Miscellaneous Notes

- A. Immature turtle (3135 LFL) was seen basking on the East end of East Island on 6/28/93. The turtle was not measured. This turtle has previously been seen basking at French Frigate Shoals.
- B. S79 had an old moto-tool engraving: C3.
- C. S142 had no left front flipper (gone to the joint). She was seen digging a body pit on 6/13 on the west end of East Island.

- D. A dead turtle was found on Little Gin on 6/30. The turtle was located well above the berm near the center of the island and was not tagged. Other information is as follows:

Curve Carapace Length: 98.0 cm

Curve Carapace Width: 91.5 cm

Plastron length: 79.0 cm

Plastron width: 72.0 cm

#2 tumor Right Flipper

#2 tumor Right Dorsal Neck

- E. There was one tumored turtle nest marked this year. S91 nested on 6/8/93. This nest is located South of the cinderblock pile. The stake is clearly marked with red flagging tape and is located one meter due North of the nest.

1:45. 10/3

George,

I (Michael Moser) gathered some DATA FOR YOU TO REVIEW BEFORE FRIDAY'S MEETING. I WILL BE GIVING A BRIEF SUMMARY ON THE 89 EAST ISLAND DATA THAT SHOULD TAKE 5-10 MIN.

Attached you will find

- 1) TURTLE ID INFORMATION
- &
- 2) DAILY TOTALS FOR THE WHOLE SEASON

I HAVE SIGHTING DATA FOR EACH TURTLE (NESTING ATTEMPTS FOR EACH TURTLE) HOWEVER, IT IS VERY LENGTHY & NEEDS EDITING. THEREFORE YOU WILL RECEIVE THIS AT A LATER DATE ALONG WITH ALL THE COMPLETE DATA.

Sorry I missed you &
I look forward to seeing
you on Friday.

P.S. A potluck party
will be held at Kailua
Beach for FWS / NMFS
personnel this Sun. 10/8
See John Henderson
for details.

MAHAIO,

Michael Moser



United States Department of the Interior

FISH AND WILDLIFE SERVICE
PACIFIC ISLANDS OFFICE

P.O. BOX 50167
HONOLULU, HAWAII 96850



June 18, 1991

George Balazs
National Marine Fisheries Service
2570 Dole Street
Honolulu, Hawaii 96822

George,

I hope all is going well in Honolulu, as is here at French Frigate Shoals. It has been enjoyable talking with you over the radio during the past couple of weeks. I feel it has been necessary to keep you abreast of what is going on here with the turtle project on East Island and for giving both Greg and myself more guidance on questions that needed to be answered for a more successful turtle season. Hopefully, the information I have sent will be helpful in ironing out any wrinkles that you may see in the work that Greg and I have been doing thus far.

I have enclosed with this letter: 1) A photo copy of the daily totals sheets updated as of 06-18-91. 2) A computer print out of the completed data collected as of 06-15-91 for Nesting Female Sightings. 3) A computer print out of the data collected as of 06-10-91 for Turtle Identification and 4) A roll of my personal film depicting some sort of growth seen on the turtles that does not appear to be akin to the Fibropapilloma that have been observed here.

As the Daily Totals indicate, there have been 71 turtles newly identified as of 06-18-91 from the time when the first observations were made on East Island on 05-04-91, at which time the camp was started. It does appear that within the last week or so, the number of new ID's per night has decreased significantly while the numbers of turtles up on the island per night, respectively, have remained about the same.

The computer print out of the Nesting Female Sightings data is just to give you an idea of how much activity is occurring on East Island as of 06-15-91. These records are updated as soon as the forms are completed on East Island and are brought back to Tern Island by who ever is returning from their stay at East.

The computer print out of the Turtle Identification data is also handled in the same fashion as the Nesting Female Sightings data. There are a few questions regarding the format of this printout. To explain why it looks the way it does is that it is easier for us to cross reference our data with the actual data sheets. Another reason is that it makes it easier for us to see what we have missed either in collecting the data in the field or entering it in the computer, thus making it easier to update our NEEDS list for East Island. Both Greg and I can envision one major problem with this method of data entry. The problem would be that if you were to receive a tag, say from some fisherman in the Phillipines, and you wanted to call up that turtle's record by that specific tag number, A236 R12 (the second tag on the list), then you would not have the carapace measurement, tumors present upon application of the tag, or sex of the animal at your fingertips. So, if it is inconvenient for you, or if it is not the way you prefer the data be entered, please let us

know as quickly as possible so that we may take the necessary steps to correct the data. Also, the way the 1989 data has been entered, one could not distinguish the dates between when a tag was applied or read, an exam done, or a carapace measurement taken, because for each date, a complete record was shown with all variables accounted for.

The film is some of my personal rolls but I managed to squeeze in a few shots of growths at the end of the roll. They aren't exactly the best representation of what I am trying to show to you. Just the same, I hope they are helpful to describe what we are seeing. The picture on the pink piece of paper is a drawing of what I am trying to describe to you. Anyway, you are welcome to keep the pictures of the tumors, and I will collect the others when I get to Honolulu.

The tumor breakdown for East Island is easily seen on the Turtle ID print out. There are a total 8 tumored turtles on East as of 06-18-91 (see L-70's record). On Tern Island, 6 out of 19 have been IDed with tumors (Two with a size class of 2, and four with a size class 1, and none of the turtles had more than 2 tumors on her body).

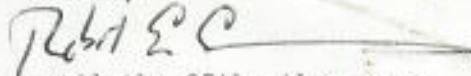
The number of new vs. old tags on East Island were 25 N : 37 O, and 4 unaccounted for as of 06-15-91. The number on Tern Island were 11 N : 8 O as of 06-15-91. (Two of the Tern turtles have nested on East)

As you can see from the data sheets, our NEEDS list is very small, and hopefully by the end of the season, we will have all the variables accounted for, except for those that decided to emigrate to neighbor islands to nest.

We have been keeping track of misapplied tags, lost tags, tags that have ripped out, and tags that have been found. They are being stored on East Island until the end of the season. Although, if you would wish to have them sooner, we could ship them back whenever possible.

Well, I hope that this little care package gives you a good overview of how things are going and a feel for how and what we are doing. Your feedback would be greatly appreciated.

ALOHA,



P.S. I will be on East from the 22nd of June until the 28th, then on a regular 4 day rotation with Greg after that.

HOM

To: Ken McDermond
From: Robert E. Cummins
Subject: Proposal to Relocate Turtle Camp on East Island
Date: 08-29-91

During the 1991 turtle field season, it became apparent that the greatest density of nests laid by the turtles occurred just ENE of where the camp was located (Figure 1). Also, the area north and south of camp had a fairly high density of nests. I feel that the present location of the camp is in the highest density of turtle nests and should be relocated.

If memory serves me correctly, during the 1990 field season, the camp was located approximately 5 to 10 meters west of where the camp was this year. It appeared that the same situation occurred with the tent being in a prime nesting location. Just north and east of the camp, it was observed on several occasions, that turtles would partially excavate nests that had previously been laid. With only 103 identified turtles this season, and an expected increase in numbers in 1992, I feel that the problem could escalate.

It seems as though the western boundary for the majority of the nests is where the substrate turns from a small coral rubble with some interspersed sand and dirt, to one of sand (Figure 2). It is the sand portion of the island (the west spit) that decreases significantly in area by the end of the turtle season. It is for this reason that I don't believe it is feasible to relocate the camp further west than the camp was this year.

It is my belief that the area somewhere between the downed telephone poles and the concrete blocks on the NNE end of the island would be more suitable for the camp (Figure 1). It is in this location that the minimum number of nests have been laid. Not only is this area ideal in terms of minimal nesting activity, but other factors that need to be considered such as docking and disturbance to the monk seals would also be minimal.

It is possible, and has been done, to land a boat in the area NE of the downed telephone poles. When the wind conditions are marginal for boat travel and docking, the reef plays an important role in cutting down the amount of wave action that was encountered when docking the boat north of camp for the past two seasons.

This field season, there appeared to be only an occasional basking seal in the area where the proposed landing would be. If a seal were to be basking on the beach, where the boat needed to be landed, an alternative location could be chosen, such as the one used during the 1989, 1990, and 1991 turtle field season (North of the 1991 camp). During the 1989, 1990, and 1991 field seasons, seals would haul themselves up around the camp to sleep during the night. Seals were not observed to be basking in the proposed camp location, either during the day or night. However, seals would haul themselves out around the downed telephone pole (the middle of the three, see fig. 1) and also around the cement blocks near the berm.

One draw back to having the camp relocated to the new site is that the area has a high density of nesting albatross. Upon setup of camp in early May, the majority of the chicks are mobile, and hopefully it wouldn't be too much disturbance. The camp would have to be set far enough away from the berm on the North side because it is here that the young albatross migrate to fledge. There were no nesting Masked Boobies in this area and the frequency of Wedge-tailed shearwater burrows was minimal.

In July and August when an increasing number of turtle clutches began to hatch, it seemed that the tent and compound was just one more needless obstacle for the hatchlings to traverse to get to the water. It seems as though they prefer to enter the water on the South side of the island, and if the camp were set up in the proposed site, then there is less chance of encountering the tent. On two separate occasions this past field season, three turtle hatchlings (1 and 2, respectively) have found their way under the tent and had to be lured out by flashlight.

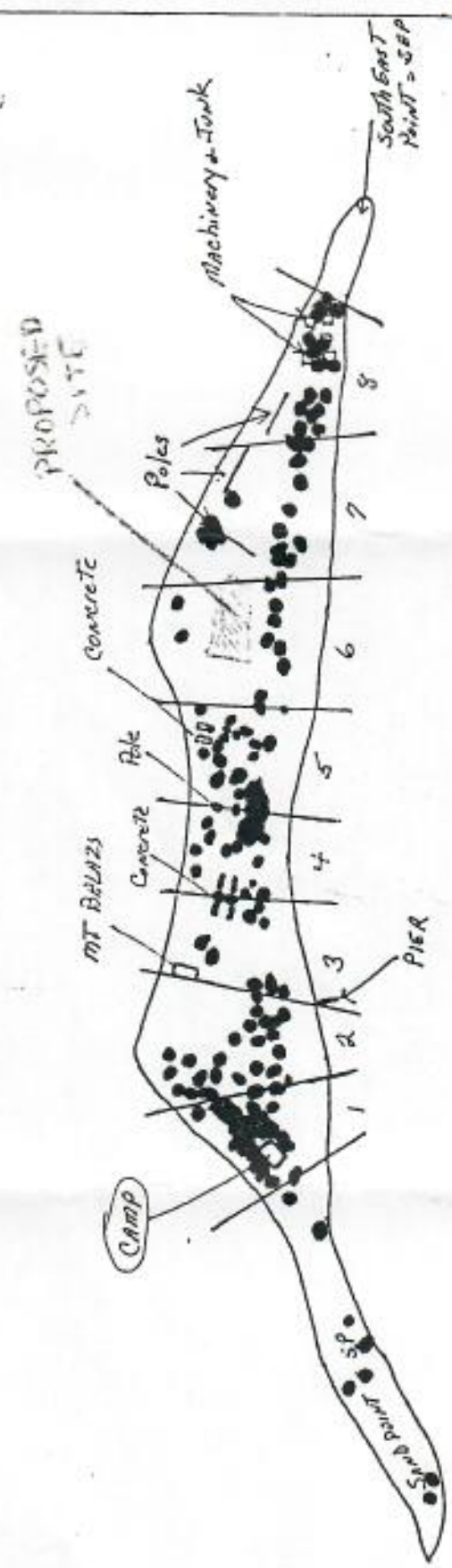
It is my belief that a relocation of the turtle camp for the 1992 season could only be beneficial to the survival of Green turtles. It would give the females more optimal space to potentially nest and would give the hatchlings one less obstacle to navigate before beginning their long voyage to maturity.

METS (HOB)

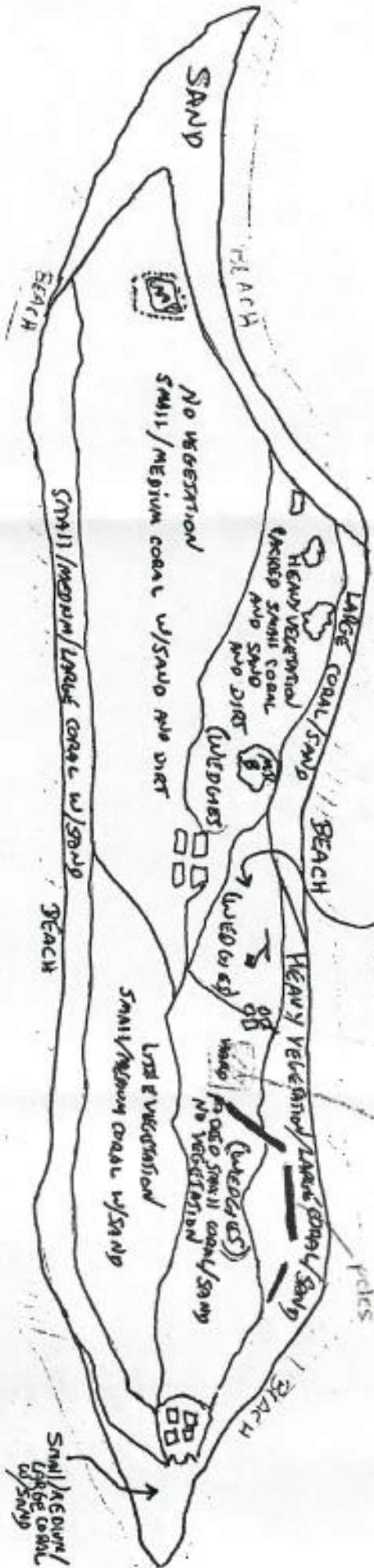
SURGE

(EGGS ONLY)

EAST ISLAND



EAST ISLAND (AUGUST 1, 1991)
FFS



SMALL COAL = 0-3 cm²
 MEDIUM COAL = 3-7 cm²
 LARGE COAL = 7 cm²



PEARL PACIFIC ENTERPRISES

AERIAL PHOTOGRAPHY AND RECONNAISSANCE

98-1022 Kaamilo Street, Aiea, HI 96701 Telephone (808) 486-6657

May 22, 1995

Alf Aanensen
Contracting Officer
United States Department of The Interior
Office of the Secretary
Office of Aircraft Services
Anchorage, Alaska 99502-1052

It has been three months since we have submitted our offer (2/18/95) on Solicitation No. 8195-04 for the Rental of One Airplane With Pilots - U.S. Fish and Wildlife Service, Hawaii, and the contract has not yet been awarded.

Pearl Pacific Enterprises has already lost two flights to boats which were utilized because we have not yet been approved by your office. We have been very patient and accomodating and have responded promptly to all paperwork received from your office. Communication has been difficult, and there has not been any resolution to this problem.

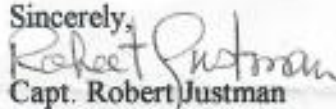
We were informed by the OAS that it is necessary for us to install two TSO GPS in the aircraft. This specification was not written in the contract at the time it was issued. This information was brought to our attention after bids had closed. Our one big question remains. Since we have been approved to operate as a Public Aircraft when does compliance with an Advisory Circular become regulatory? The addition of (2) TSO 129 GPS will not make the operation any safer. It will however, have several negative ramifications. First, it will decrease payload, and second, it will cost over \$10,000 to purchase and install this equipment. The most negative effect will be the additional hardship and burden placed on the various government agencies that we fly for which includes the Fish and Wildlife Service, National Marine Fisheries, Weather Bureau, and University of Hawaii. The Fish and Wildlife Service as well as the National Marine Fisheries have planned numerous flights this summer. Substantial increases in costs to us will force us to pass this cost on to them. This is something that we do not want to do. If the contract is reissued personnel on Tern Island will experience further delays and loss of air service.

We have been conducting flights to Tern Island, French Frigate Shoals, for 14 years with over 320 round-trips totaling approximately 320,000 miles and have not gotten lost yet. This includes two round-trip flights to Midway and Kure. The flights at this time were conducted on a single LORAN receiver.

Presently, we have the permission to operate as a Public Aircraft. As you know, we have agreed to up-grade one of our 2,001 GPS to a TSO 129 when the manufacturer implements this. However, the addition of two TSO GPS will not enhance the operation nor will it increase safety or efficiency of the flights.

We have lost two flights to Tern Island. The flights scheduled for June 2 and June 9 are also in jeopardy. Pearl Pacific Enterprises would like to get back to work providing reliable service to the departments that utilize our services.

Sincerely,



Capt. Robert Justman

Owner/Operator

Pearl Pacific Enterprises

copies: Fish and Wildlife Service
National Marine Fisheries
Weather Bureau



U. S. DEPARTMENT OF COMMERCE
National Oceanic and Atmospheric Administration
NATIONAL MARINE FISHERIES SERVICE
Southwest Fisheries Science Center Honolulu Laboratory
2570 Dole St. • Honolulu, Hawaii 96822-2396
(808)943-1221 • Fax: (808)943-1290

November 21, 1994 F/SWC2:ghb

Mr. Marc Webber
Refuge Manager
Hawaiian and Pacific Islands
National Wildlife Refuge
P.O. Box 50167
Honolulu, Hawaii 96850

Dear Marc:

While it's still early, I want to take this opportunity to let you know my plans for proposed sea turtle research at French Frigate Shoals during the summer of 1995. The following provides a short outline of activities and estimated scheduling.


- 1) Population monitoring of nesting green turtles at East Island for the 23rd consecutive year. As conducted during the 1993 and 1994 seasons, a 30-40 day monitoring period is envisioned, starting during late May or early June. I hope that cooperative sponsorship of this critical work between our agencies will once again be possible. As in past years, I plan to fund transportation (air charters) and other necessities outside of personnel costs. As we discussed, I believe that Kellie Takimoto will be an excellent person to share the nightly monitoring at East Island.
- 2) Deploy satellite transmitters on two adult male and two adult female green turtles at East Island and/or Tern Island. This work will be a continuation of satellite tracking accomplished with adult females during 1992 and 1993 (publications enclosed). Ideal scheduling would involve 3-4 days of work during mid-to-late May (for males), and another 3-4 days during mid-to-late August (for females). I would personally travel to French Frigate Shoals to conduct this work.
- 3) Deploy and retrieve up to 12 computerized temperature recorders in nesting substrate at East Island and Tern Island. This work, to be facilitated by Kellie Takimoto, will provide valuable insight on temperature-dependent sex determination and sex ratios of green turtles hatched at French Frigate Shoals. Each unit is self-powered and weighs only about 100 grams. The units would be buried at different depths to approximate the depths of egg nests. They would be deployed during February and dug up the following December. Three measurements are automatically recorded and stored in memory each day. All data for the 11-month period are obtained via computer link after retrieval.



4) Obtain small 6 mm skin biopsies from nesting females at East Island for DNA analysis. This work will refine and expand the earlier DNA population research for French Frigate Shoals' green turtles reported by Bowen et al. (publication enclosed). Kelli Takimoto has been trained to carry out this relatively benign, simple, and extremely quick technique using a hand-held biopsy punch commonly employed in human medicine. Sampling at East Island would take place at the same time that a turtle is tagged and measured.

I would be pleased to discuss the above topics with you in greater detail, at your convenience, as we approach the new year.

Sincerely,



George H. Balazs
Leader, Marine Turtle Research Program

August 9, 1991

George Balazs
National Marine Fisheries Service
2570 Dole Street
Honolulu, Hawaii 96822

Hi George,

I hope that all is going well for you back in the "real" world. It seems as though every time we hear from you, here on Tern Island, that you are preparing for a trip. I imagine that they keep you pretty busy.

Just a short note to keep you updated on things that are occurring here at FFS. For the tumor and control nests, I have constructed several maps that I hope you will find of interest when all the data is in and can be processed.

The first set of maps includes most all of the tumor and control nests thus far, on East Island, in sets of 15. This was done because the maps get too cluttered and hard to read otherwise. As of 08-07-91, we have identified 39 tumor and control nests. The approximate locations of these nests can be seen on one of the two maps labeled "Tumor and Control Nests" (2 maps). It is sometimes difficult to find a control nest that is in the same substrate and approximately the same time frame as the tumor nests. Generally, Greg and I have been able to get control nests within just a few days.

The other map that I drafted up is of the surface substrate on East Island. I feel that this is also a good representation of the substrate beneath the surface. As you can see, the map has been divided into several sections depending on the size, abundance, and "texture" of the substrate.

Upon excavation of the few nests that have hatched this year, and excavation of many nests from last year, I feel that the type of substrate would be an important aspect to consider when looking at the hatching success for the little turtles. For example, it appears as though that with the substrate that has a fair amount of "dirt" in it, that the turtles tend to get trapped in clumps of dirt that appear to have solidified since the time the clutch was laid. Just the opposite can be said for the very sandy substrate. It seems as though the turtles have a relatively easy time emerging from the nest. In the substrate where there are large pieces of rubble (man made and natural), the turtles appear to get trapped beneath them and can't seem to find their way out.

I don't know if these factors would come into play for the period during incubation, although, I can envision that it would be very important for water content of the soil and possibly temperature.

Since I'm not familiar with how the data is processed other than just finding percentages of hatching success, I thought that this might be useful information.

Also included in with this letter is a copy of the daily totals. At the time of writing this letter, it appears as though the activity has dropped significantly. Greg and I have thus far only identified 100 turtles. It is

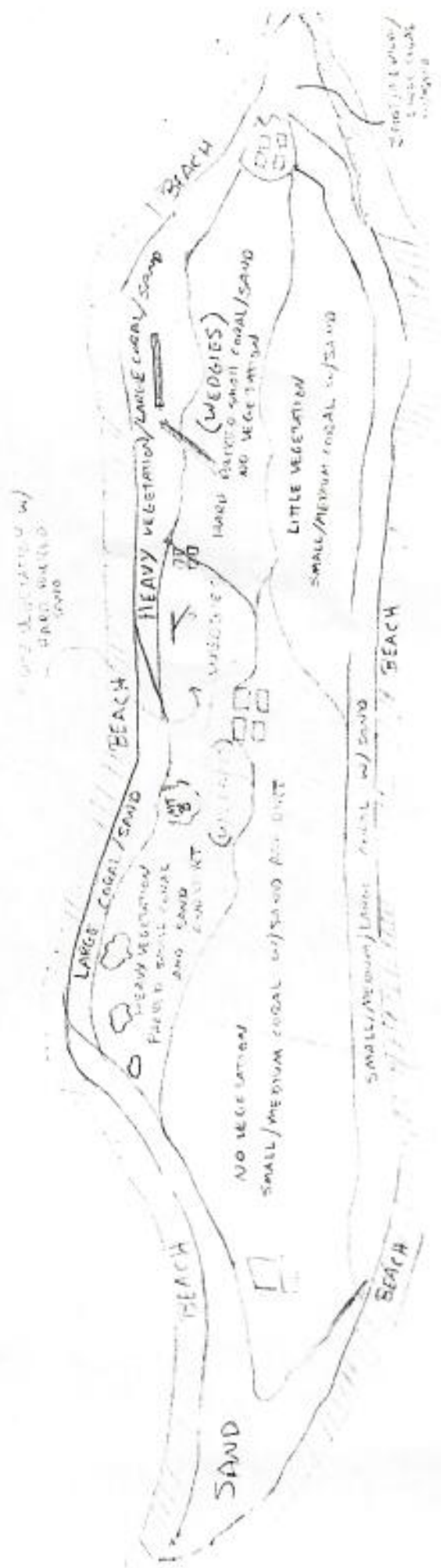
pretty depressing to think back when Glynnis and Mike (1989) had all those turtles IDed, then last year Glynnis and I had IDed fewer turtles, and now this year, Greg and I have IDed even fewer turtles. Hopefully, next season we'll have a bumper crop.

Well, in trying to stick to just a short note, I'll say Aloha. I'm looking forward to talking to you when you return from your trip, if I'm on Tern.

Robert C.

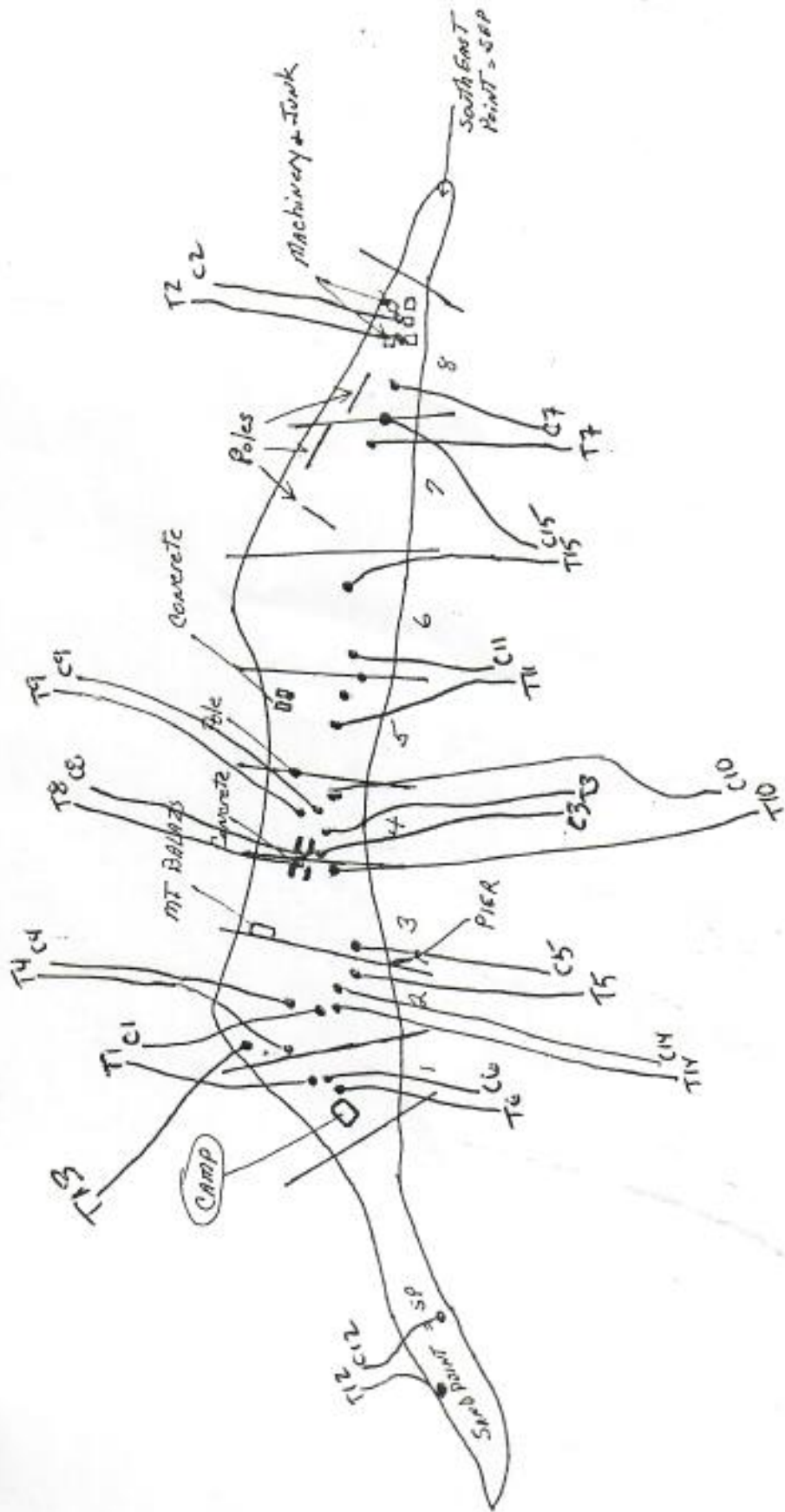
EAST ISLAND (AUGUST 1, 1991)

FES

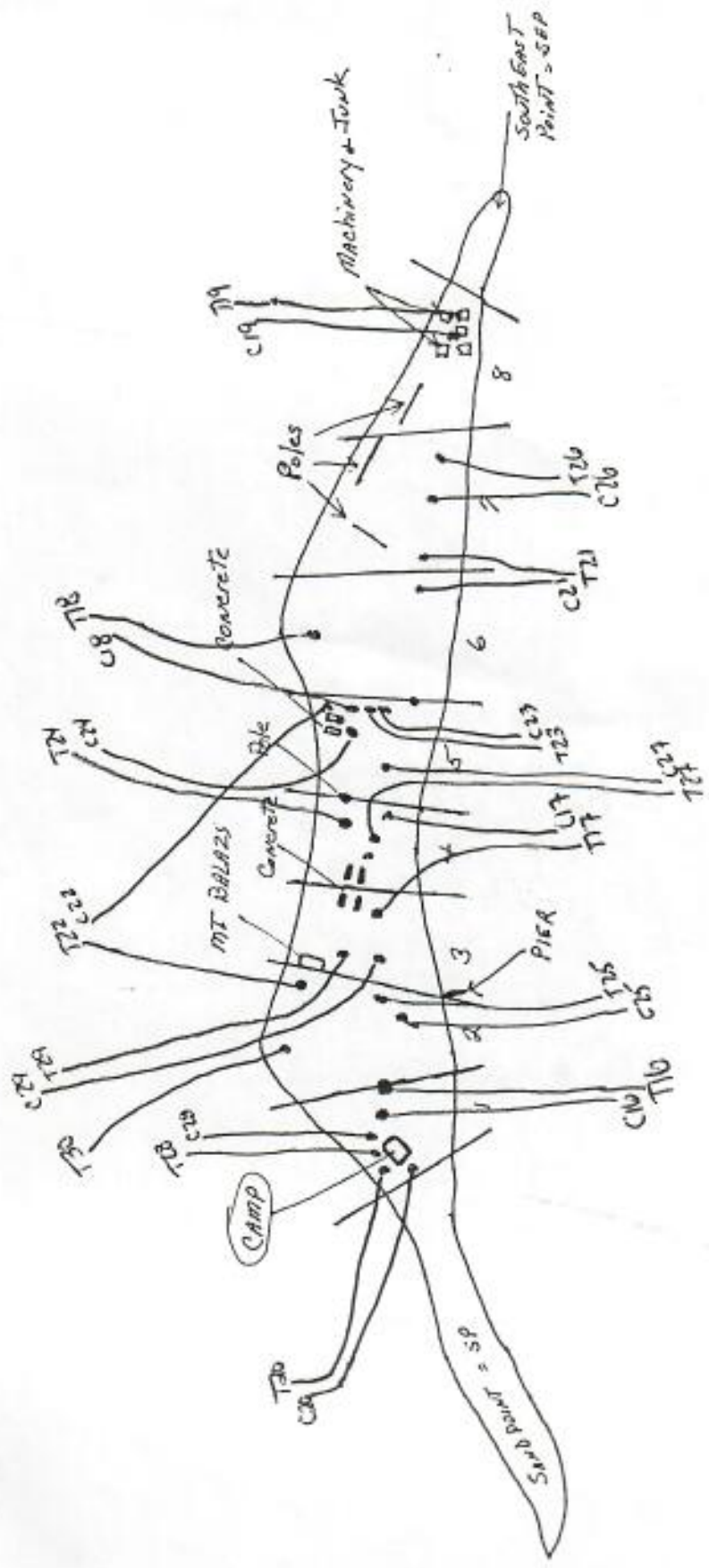


SMALL CORAL = 0-2 cm²
 MEDIUM CORAL = 3-7 cm²
 LARGE CORAL = > 7 cm²

TUMOR AND CONTROL NESTS 1-15
(1991) EAST ISLAND



TUMOR AND CONTROL NESTS (6-30)
(1991) EAST ISLAND



June 22, 1991

George Balazs
National Marine Fisheries Service
2570 Dole Street
Honolulu, Hawaii 96822

Hi George,

I hope that your trip to the South Pacific was an enjoyable one. It was good to talk to you on Saturday (07-20-91), and the stories of ticks were kind of spooky. At least the worst of them are over now, as I've only seen one in the past two times I've been on East Island. When they were at their peak, they were nasty. I didn't know, but did suspect, that the body builds up an intolerance to the bites. I do believe that is why I ended up getting sick those two times. At least I'm all better now!

Enclosed are copies of updated versions of the TURTLE ID and TURTLE SIGHTINGS. Each one has been cross referenced and double checked against the original data sheets. They are also as far up to date as possible without bringing half full data sheets back from East Island. As I had mentioned in the last letter, the copies I sent you last time had not been cross referenced, so, you can put those in the circular file if you want. Also enclosed is a current list of the daily totals.

A note that might be of interest, the first hatchlings were seen on Tern Island on 07-11-91 and then a few days later, on the 15th, the first hatchlings were seen on East Island. It is interesting to note that the nest that hatched on East Island was one that Greg had transplanted earlier in the season.

When exploring around the mountain of cement on East Island, I turned over two pieces of cement and under each one, found what appeared to be a black widow spider. So, I collected them and we are sending them to Honolulu to determine just what they are.

That is about all the news on this end, things are going well otherwise. Greg and I are both looking forward to talking to you when you have a chance to come up on the radio. Take care and have a good rest of the summer.

ALOHA,

Robert E. C. _____



U.S. DEPARTMENT OF COMMERCE
National Oceanic and Atmospheric Administration
NATIONAL MARINE FISHERIES SERVICE
Southwest Fisheries Center Honolulu Laboratory
2570 Dole St. • Honolulu, Hawaii 96822-2396

25 May 1991

Ms. Jennifer Megyesi
U.S. Fish and Wildlife Service
TernIs. ("FFS National Wildlife Refuge")

Dear Jennifer:

Sorry I didn't have the opportunity to speak to you when I made contact on the radio yesterday morning. Greg filled me in on how its been going, and things sounded like they're coming along real well. I'm sure it will continue to do so. Must seem a bit strange though, without Ken around. In "spirit" I'm sure he will continue to walk the hallways and beaches of Tern for time immemorial. Just like my spiritual destiny still moves me across East! Strange sort of coevolution, huh?

I'll do my best to radiocall up to you folks just as much as possible. Please don't hesitate for one moment to ask questions or seek clarification on anything relating to the turtle work. I can come up on the air anytime you request it also.

The enclosed "Recovery data for female green turtles----at FFS" will probably be familiar to you. The items I've hilited in yellow are those that Glynnis added in as the turtles were resighted throughout the 1990 study season. Of course, ONLY those turtles that have been resighted once before, during previous years, appear on this list. The date that's used in the far right-hand column is the date that a resighted turtle is first seen during the nesting season. The tag numbers entered in the left-hand column under "Tag No." are the old tags read on the turtle or deduced to be on the turtle if only one or two of several tags on a turtle can be read; AND the number of any new tags applied to the turtle(entered in parentheses). I'm fairly certain that Bob is familiar with this table, since his initials (BC) appear for many of the entries made for 1990. As duties permit, it would really be helpful if "oldtimer" Bob could enter the resighted turtles on this list for 1991. Please ^{use} dark pencil only and print, the way Glynnis did. I've also enclosed a cross-reference list of tag numbers and "Entry nos." to make it easier to determine if a tag resighted is, in fact, present on this list. Note that in some cases, ^{the} entry no. may be incorrect by one or two numbers in each direction (ie entry no. on crossreference list says 156, but it really is 158 where the tag appears). [That was a made-up example, since I didn't really look at the list. I'm typing this at home and the list is in my office]

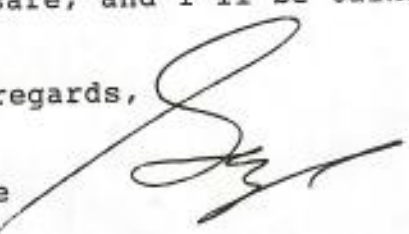
I've also enclosed a copy of the list that was used last year (and for every year since 1973) summarizing basic census data for the nightly work on East (I think you have one for Tern now, also). Maybe a copy of this for East 1991 could be maintained on Tern, near the radio, to make it easy for me to get updates when I call periodically. I would suggest one addition to the list, that is, a column after "#New turtles IDed" for "number with tumors". Remember, the "#New turtles IDed" only includes ones in which permanent ID has been established



by engraving a number, and/or applying a tag, and/or reading an old tag. If none of these events happen on the first night of encounter, the turtle is not tallied for THAT night in the "*#New Turtles ID'd*" column. Instead, it is tallied on the night that permanent ID is in fact established by one of the above events. At times in the past this has been a point of confusion, so I thought I would try to clarify it.

There's hardly a day that I don't think about you folks out there. Stay safe, and I'll be talking to you soon.

Best regards,

George 

PS Just realized that I don't really know when this letter will reach you- but hope it won't take long.

I've also enclosed an article about the leatherback turtle. This is what Don encountered out at Midway on Jan 3. Sometimes it's difficult for me to think of these creatures as sea turtles, they're so doggone different!

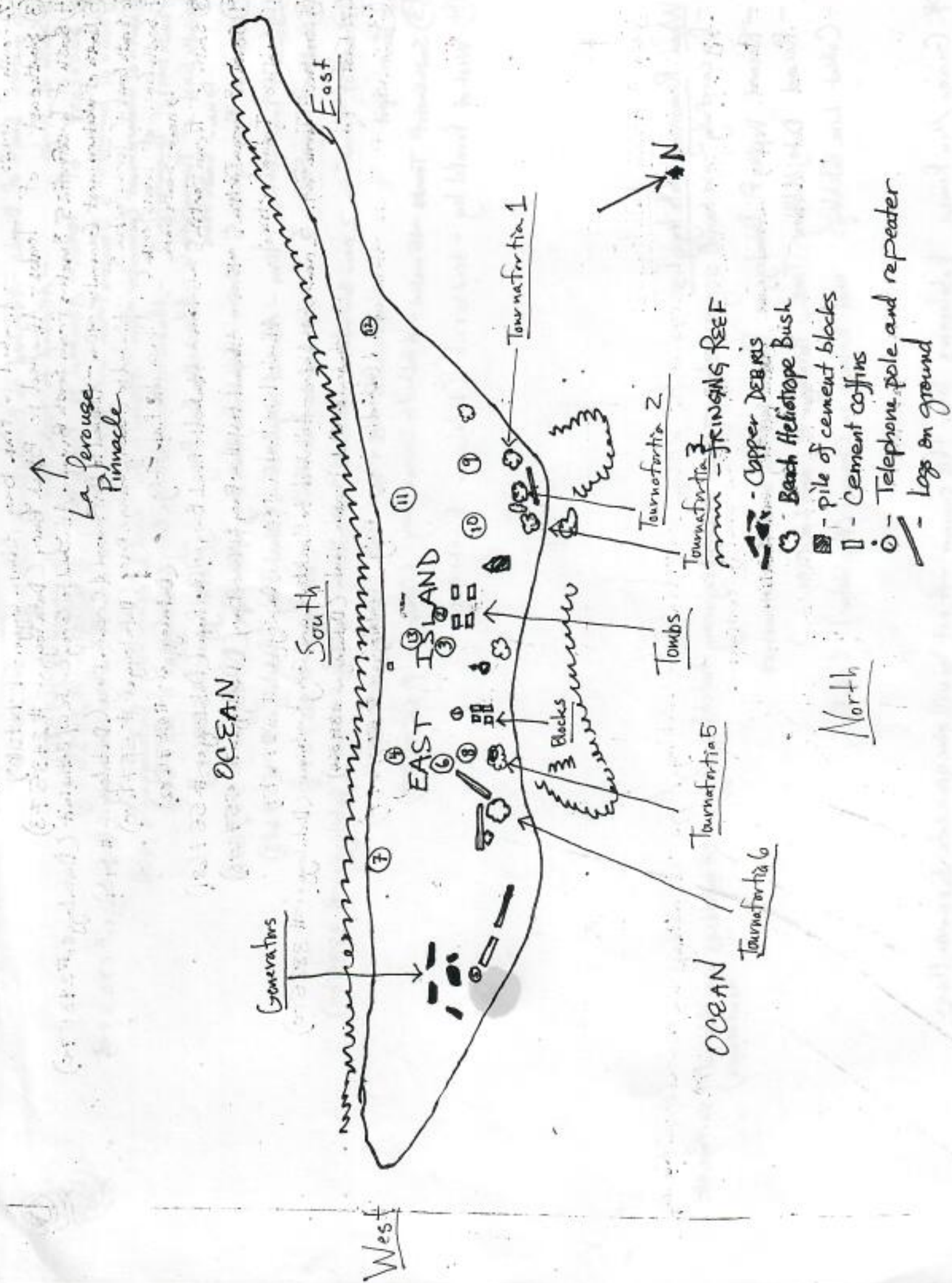
Roll #1

Photo Record East Island FFS, 2003


Date	Location	Picture #	Description
5/31/03	(evening/TI) S. Shore	1-2	#93 C ₂ H ₂ O after nesting
6/1/03	S. Shore SPIT #3 #4	3, 4	Basking Turtles
6/1/03	Tent	5	#111 PC by tent
6/1/03	E. Point S. Shore	6, 7	Greens trying to mate.
6/1/03	S. Shore? WSPIT →	8, 9	Greens enter by H ₂ O - at least one is #72
6/1/03	E SPIT	10	#99 PC
6/2/03	N Shore W SPIT	11 12, 13	Frigate (Ran. low) Sunset
6/2/03	S. Shore S. of TI	14	#115 Breathing for air just after leaving label
6/9/03	Near Tent → SW Point →	15, 16 → 17, 18 →	→ #123 XDF at sunset 7:15:00 → Unknown C ₂ H ₂ O
6/9/03	SEPTS → SW Point	19 → 20 →	→ 47 Puff blowing → 68 to H ₂ O after night of basking
6/10/03	EM sub blocks E SPIT	21 → 22 →	→ 97 just starting to BF → 19 XEC
6/11/03	SE Point Blocks	23, 24, 25 → 26-29 →	→ Growths on LFF & RFF Turtle #75 → Alcahale nesting
6/11/03	SW Point	30 & 31 →	→ 87? Posing w/ Pit Tag Scanner
6/12/03	- Beach N Shore? S. of TI Set T ₂ → South Sea	22 & 23 → 34 →	→ Beach? → #76 motions of backfilling in water
6/12/03	SPIT	35? and 36 →	→ 181 BF (LHF Damage)

Marine Turtle Research Program
PIFSC Honolulu Laboratory
National Marine Fisheries Service
2570 Dole Street
Honolulu, Hawaii 96822-2396

Joe's Camera



- Copper Debris
- Beach Helicopter Bush
- pile of cement blocks
- Cement coffins
- Telephone pole and repeater
- Logs on ground

- 
- ① 5 meters South of Blocks - Attached to Black Buoy (Datalogger # 266016)
 - ② South of Tombs - Attached to Pink Buoy (Datalogger # 464580)
 - ③ Southeast of Tombs - Attached to Black Buoy (Datalogger # 243573)
 - ④ South of Tournafortin 5 3 meters from South Berm - Attached to Grey Crate w/ Bethasinit (Datalogger # 243570)
 - ⑤ North of Westernmost Generator ~10m - Attached to Driftwood & Cream Buoy (Datalogger # 1409)
 - ⑥ South East of Tournafortin 5 - Attached to Pinkish/Orange Buoy (Datalogger # 557680)
 - ⑦ South East of Tournafortin 6 - Attached to Pink Buoy (Datalogger # 557682)
 - ⑧ South of Tournafortin 5 ~5-10m - Attached to Black Buoy w/ Blue Rope (Datalogger # 557681)
 - ⑨ South of Tournafortin 1 ~10m - Attached to Yellow Buoy & Black Buoy (Datalogger # 557683)
 - ⑩ South of Tournafortin 3 - Attached to Pink Float (Datalogger # 557674)
 - ⑪ South of Tournafortin 2 near South Shore - Attached to Black Buoy and Grey (outliner) (Datalogger # 383500)
 - ⑫ East Spit - Attached to Old Propane Tank (Datalogger # 381364)
 - ⑬ South End of Tombs ~15 meters - Attached to Orange Buoy (Datalogger # 557677)
 - ⑭ West of Parallel log - tied to rock (Datalogger # unknown)

When Removing Dataloggers:

- Dig carefully - use hand scoops below 20cm to avoid injuring hatchlings/eggs - (if hatchlings are observed at surface use hand scoops)
- Record Depth of Datalogger from surface sand in centimeters
- Record Date, Military Time, Datalogger #, and Location
- Collect Live Hatchlings and Release in Channel (Deep Water) Collectively

* George May Remove Dataloggers later this summer - if not he will give you a date to remove them

East Island Turtle Report 2003
US Fish and Wildlife Service
Erin S. Green
Joseph Spring

I. General Monitoring

The 2003 turtle season was a short season consisting of six weeks of monitoring. There were 213 nesting green sea turtles (*Chelonia mydas*) identified on East Island during the monitoring period.

Turtle Camp began on May 22, 2003 and continued until July 1, 2003. Monitoring consisted of 37 full nights of data collection and 4 partial nights. May 22nd and 23rd were training nights, May 24th was a partial night due to activity on the island and June 15th was not a full night of walks due to poor weather. Each night ideally consisted of six turtle walks at the following times: 2100, 2300, 0100, 0300, 0500, and 0700 (sunset to sunrise). Due to the duration between walks, it is possible that some turtles that were up crawling or digging false pits were not seen. However, it is unlikely that those turtles that actually nested were not recorded as being up.

There were 289 possible nests recorded on East Island during the season. Eggs were witnessed for 78 of these nests. Turtles were seen covering egg chambers (patty-caking) for 75 nests and backfilling 136 nests.

II. Data Notes

Data will be entered by the National Marine Fisheries Service, Honolulu Laboratory.

Moto-tool numbers 1-213 were used during the 2003 season. Internal, magnetically coded PIT tags were used for the seventh season at French Frigate Shoals. No external tags were applied. PIT tags were applied in both the left and right hind flippers. Tags were verified using a portable PIT tag scanner after the second week of turtle camp. Verified tag numbers are recorded on the turtles' respective data sheets.

There was one turtle this year that only received a LHF (left hind flipper) PIT tag, but could've received both; that turtle was number 127. There were four turtles this year that received only a LHF PIT tag due to amputation to their RHF (right hind flipper); they were: 64, 73, and 191. There were four turtles that only received a RHF PIT tag due to an injury to their LHF; those turtles were: 161, 177, 181, and 209. There were two turtles that did not receive any pit tags and had no injuries; they were 167 and 213. These turtles were only seen on East once.

III. Tumors

Twenty-two turtles had tumors this year, or 9.68 % of the nesting females on East Island. The

tumored turtles' moto-tool numbers were: 14, 40, 48, 68, 70, 75, 77, 87, 124, 141, 146, 161, 162, 163, 182, 183, 184, 185, 187, 191, 192 and 200. Tumor sizes and locations are recorded on the turtles' respective data sheets.

IV. Data loggers

Four historical data loggers were buried on Tern Island and East Island to measure sub-surface temperatures during the nesting and hatchling season. East Island data loggers were designated E1, E4, E5, and E7. Tern Island data loggers were designated T1-T4. The data loggers were buried 45-55 cm deep at various locations around the islands. Additionally, fourteen data loggers were placed directly into turtle nests on East Island during the season. Each data logger is tied to large pieces of marine debris to more easily identify them. Deployment information is provided on the data logger deployment form. The data loggers were left in the ground at the termination of turtle camp to be recovered at a later date.

V. Miscellaneous Notes

Turtle 185 had a light blue tag from Miami, Florida anterior to the L34 tag position with the alphanumeric: BA4?. (She was also seen nesting on East in 2000)

MISCELLANEOUS NOTES ON TURTLE MONITORING AT EAST IS.- 1994
by G. Balazs

- Minimal or no disturbance to monk seals- especially mother/pup and pregnant females.
- Minimal daytime movement on the island (ie sleep days, work nights).
- Minimal disturbance to nesting turtles within the limits of getting the job done.
- When possible, 4 tags on all turtles (includes one on each hind flipper).
- Carefully read and record all tag numbers, using sufficient light and scraping of tag (with butter knife) to reveal full number. Imbedded tags can be left unread (but presence and position noted), if there is at least one certain reading of another tag on the same turtle.
- Whenever possible, take both curved and straight carapace length measurements.
- Examine each turtles thoroughly and record presence of tumors.
- Missed nights and missed segments of nights will be damaging to population modeling because of shortness of coverage. Strive to get ideal coverage.
- Use lysol (or alcohol) to treat engraver bit of mototool after each engraving.
- Have pliers, wire cutters, and sharp knife available on rounds.
- At Tern, maintain a handwritten list of the tag number(s) and engraved mototool number of all turtles encountered that have old tags. Please relay to me when I call on the radio.
- Maintain special attention to computer data entry and precision- what you bring back is the "bottom line".
- No Coleman lanterns or other brilliant light sources, to illuminate the East Island Tent. Use dim lighting only, such as news at minimum level necessary

METSIS / 100

STAGE

(MISSING)

EAST ISLAND

