

(BARSTOW)
1:125000

UNITED STATES
DEPARTMENT OF THE INTERIOR
GEOLOGICAL SURVEY

117°00'
34°30'

BARSTOW 34 MI.

R. 1 W. R. 1 E. 55'

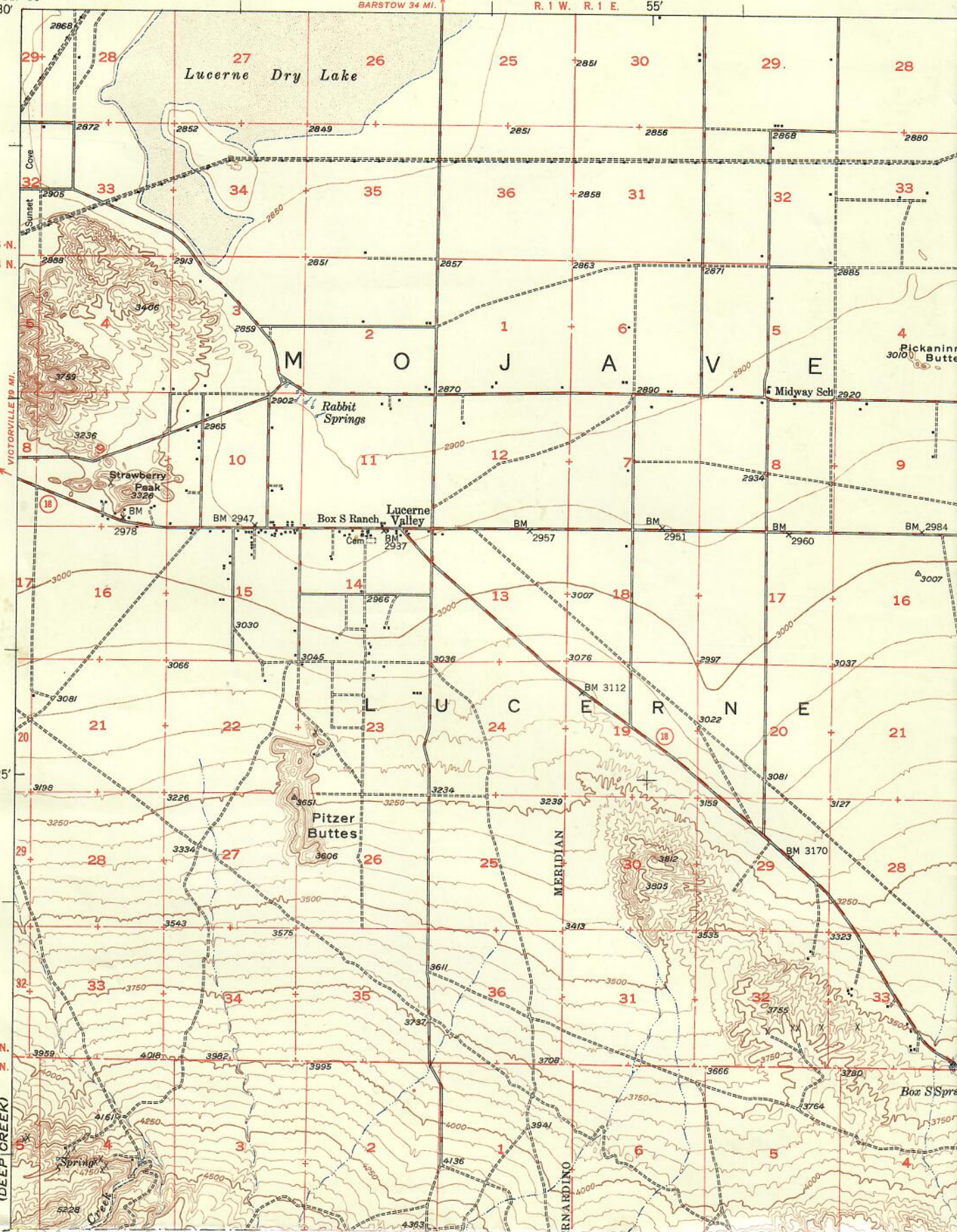
T. 5 N.
T. 4 N.

VICTORVILLE 19 MI.

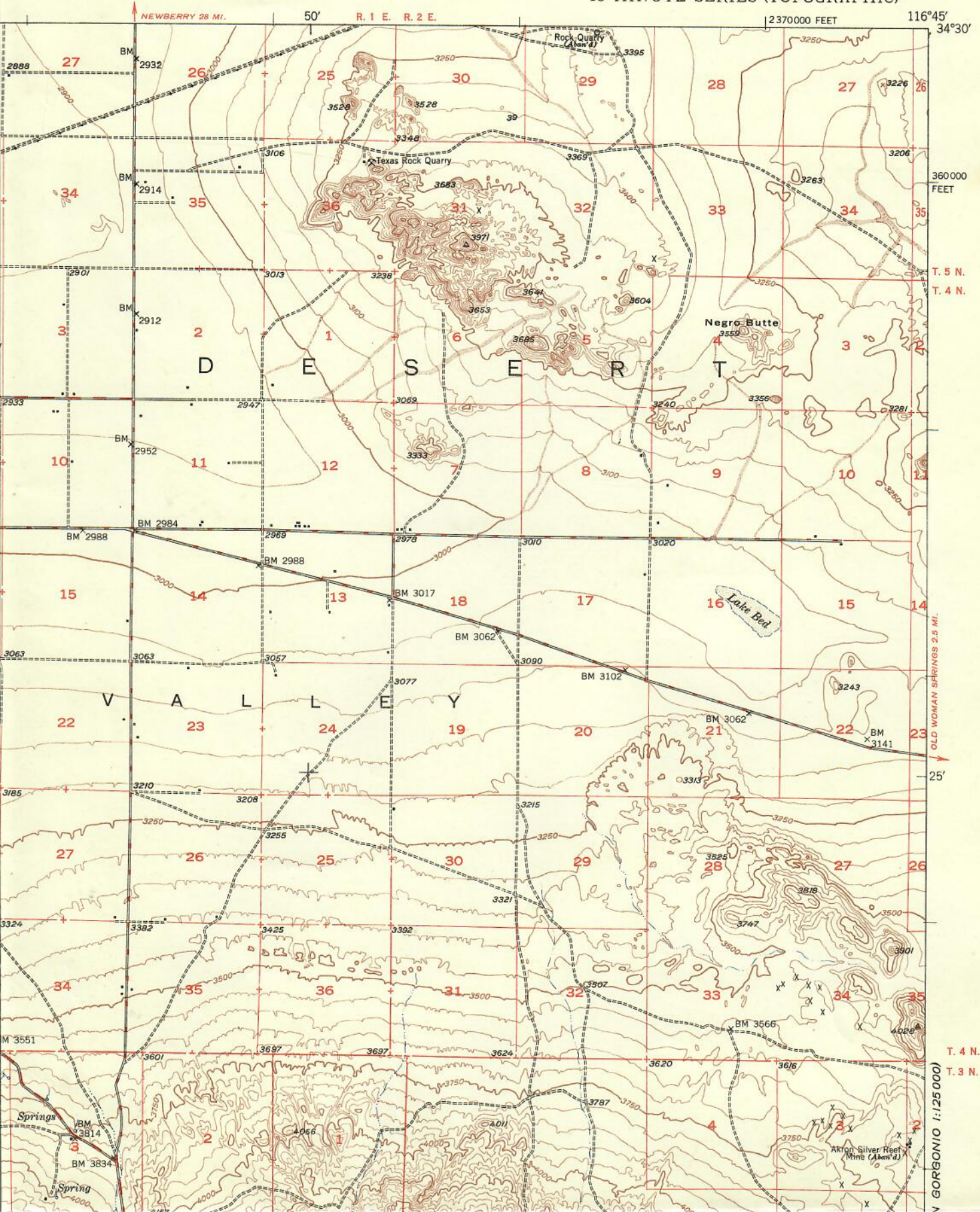
25'

T. 4 N.
T. 3 N.

(DEEP CREEK)



LUCERNE VALLEY QUADRANGLE
CALIFORNIA—SAN BERNARDINO CO.
15 MINUTE SERIES (TOPOGRAPHIC)



NEWBERRY 28 MI.

50' R. 1 E. R. 2 E.

2370000 FEET

116°45' 34°30'

360000 FEET

T. 5 N.
T. 4 N.

OLD WOMAN SPRINGS 2.5 MI.

25'

T. 4 N.
T. 3 N.

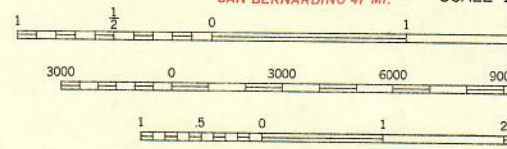
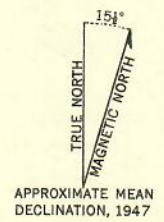
N GORGONIO 1:125000



34°15' 117°00' 2310000 FEET | RUNNING SPRINGS 14 MI. SAN BERNARDINO 43 MI. R. 1 W. R. 1 E. 55' (SAN GORGON SCALE 1:62,500) BIG BEAR LAKE 2.4 MI. SAN BERNARDINO 47 MI.

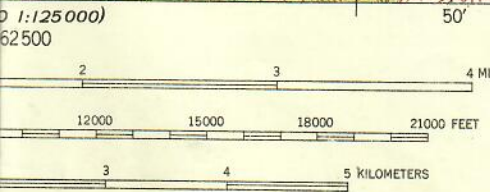
(REDLANDS)

Mapped, edited, and published by the Geological Survey
 Control by USGS and USC&GS
 Topography by plane-table surveys 1946
 and from aerial photographs by photogrammetric methods 1947
 Aerial photographs taken 1945
 Polyconic projection. 1927 North American datum
 10,000-foot grid based on California coordinate system
 zone 5
 Certain land lines are omitted because of
 insufficient data. All recovered corners are shown



CONTOUR INTERVAL IS MEAN

THIS MAP COMPLIES WITH NATIONAL MAP ACT
 FOR SALE BY U. S. GEOLOGICAL SURVEY FEDERAL CENTER
 A FOLDER DESCRIBING TOPOGRAPHIC MAPS



INTERIOR—GEOLOGICAL SURVEY, WASHINGTON, D. C.—1955
M R-7576

ROAD CLASSIFICATION

- | | |
|---|-------------------|
| HARD-SURFACE ALL WEATHER ROADS | DRY WEATHER ROADS |
| Heavy-duty 4 LANE 16 LANE Improved dirt | ----- |
| Medium-duty 4 LANE 16 LANE Unimproved dirt | - - - - - |
| Loose-surface, graded, or narrow hard-surface | |
| U. S. Route | State Route |

LUCERNE VALLEY, CALIF.
N3415—W11645/15

1947

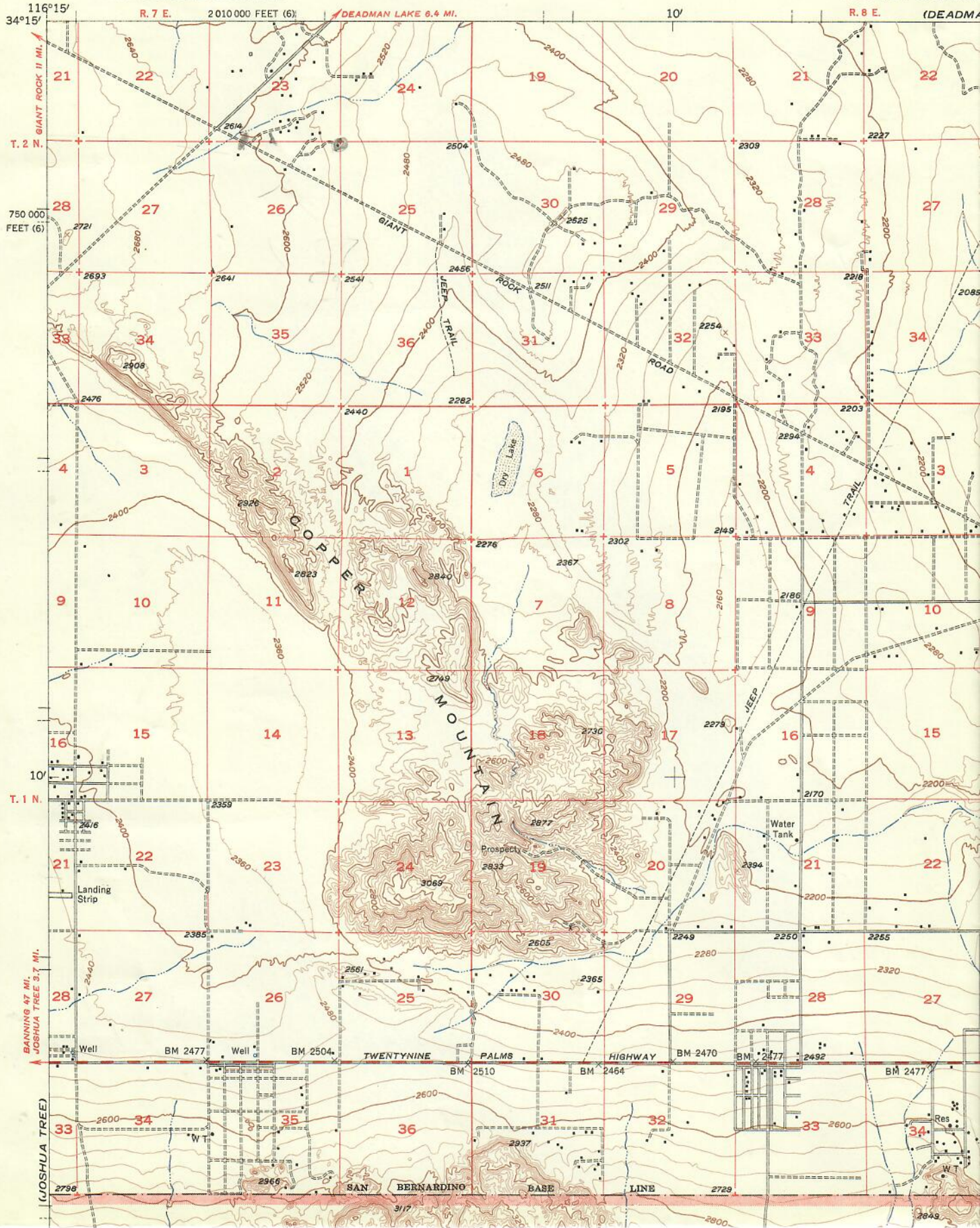
AL MAP ACCURACY STANDARDS
TER DENVER COLORADO OR WASHINGTON 25 D C
AND SYMBOLS IS AVAILABLE ON REQUEST

(S.A.)
10
11
14
20'
T. 3 N.
T. 2 N.
34°15'
116°45'
(SAN GORENDO)
1:125,000

(EMERSON LAKE)

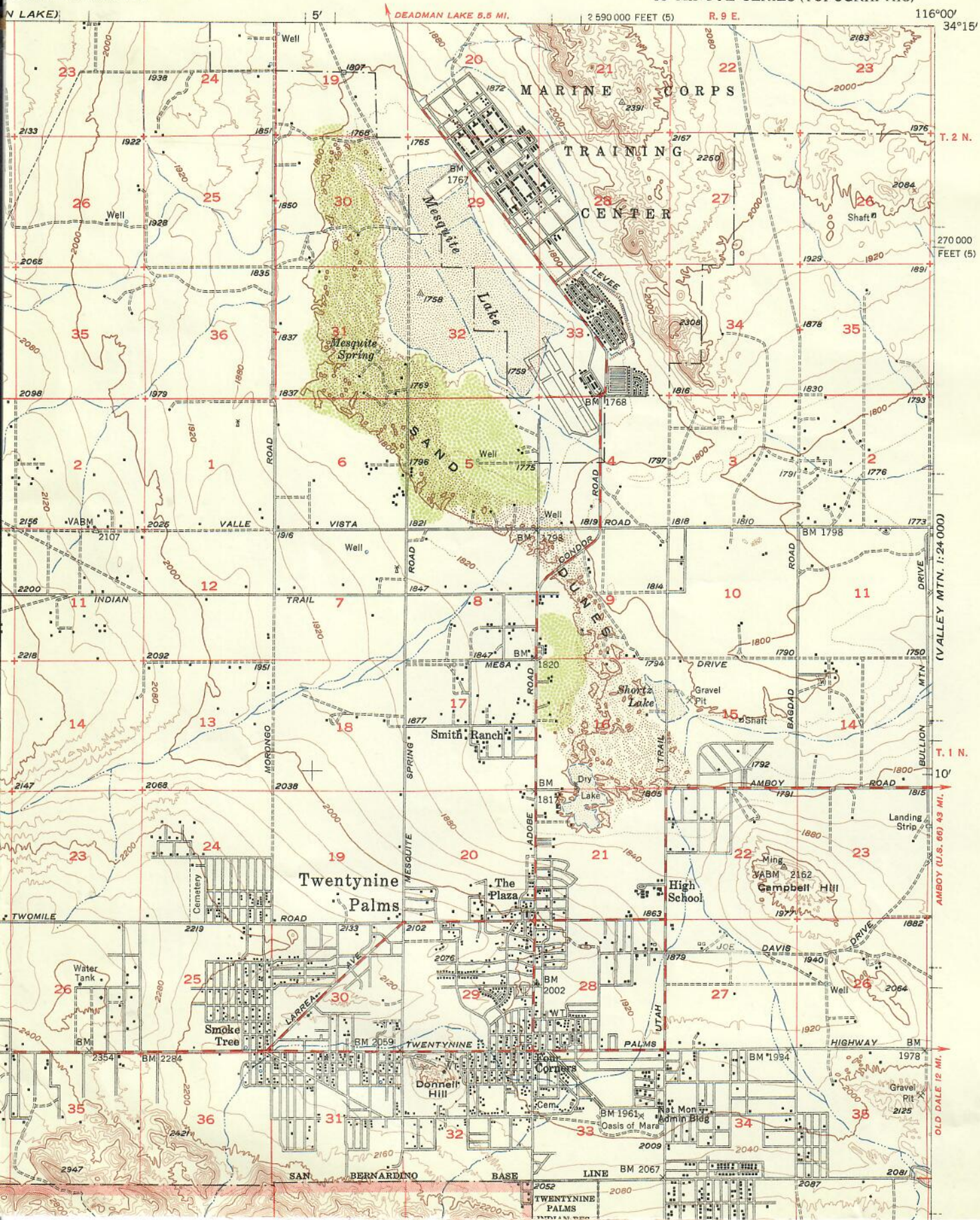
UNITED STATES
DEPARTMENT OF THE INTERIOR
GEOLOGICAL SURVEY

STATE OF
GOODWIN J. KN
FRANK B. DURKEE, DIR
HARVEY O. BANK



TWENTYNINE PALMS QUADRANGLE
CALIFORNIA
15 MINUTE SERIES (TOPOGRAPHIC)

(LEAD MTN. SW)
1:24,000



T. 2 N.

270 000
FEET (5)

(VALLEY MTN. 1:24,000)

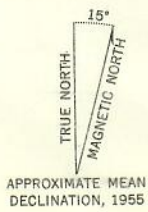
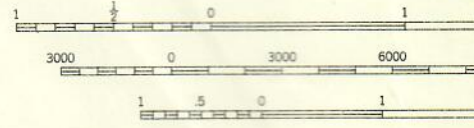
T. 1 N.

AMBOY (U.S. 60) 4.3 MI.

OLD DALE 12 MI.

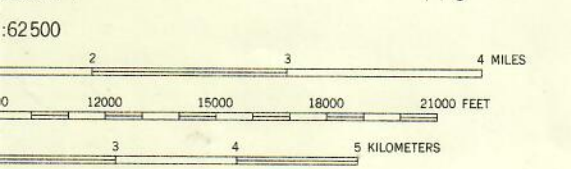
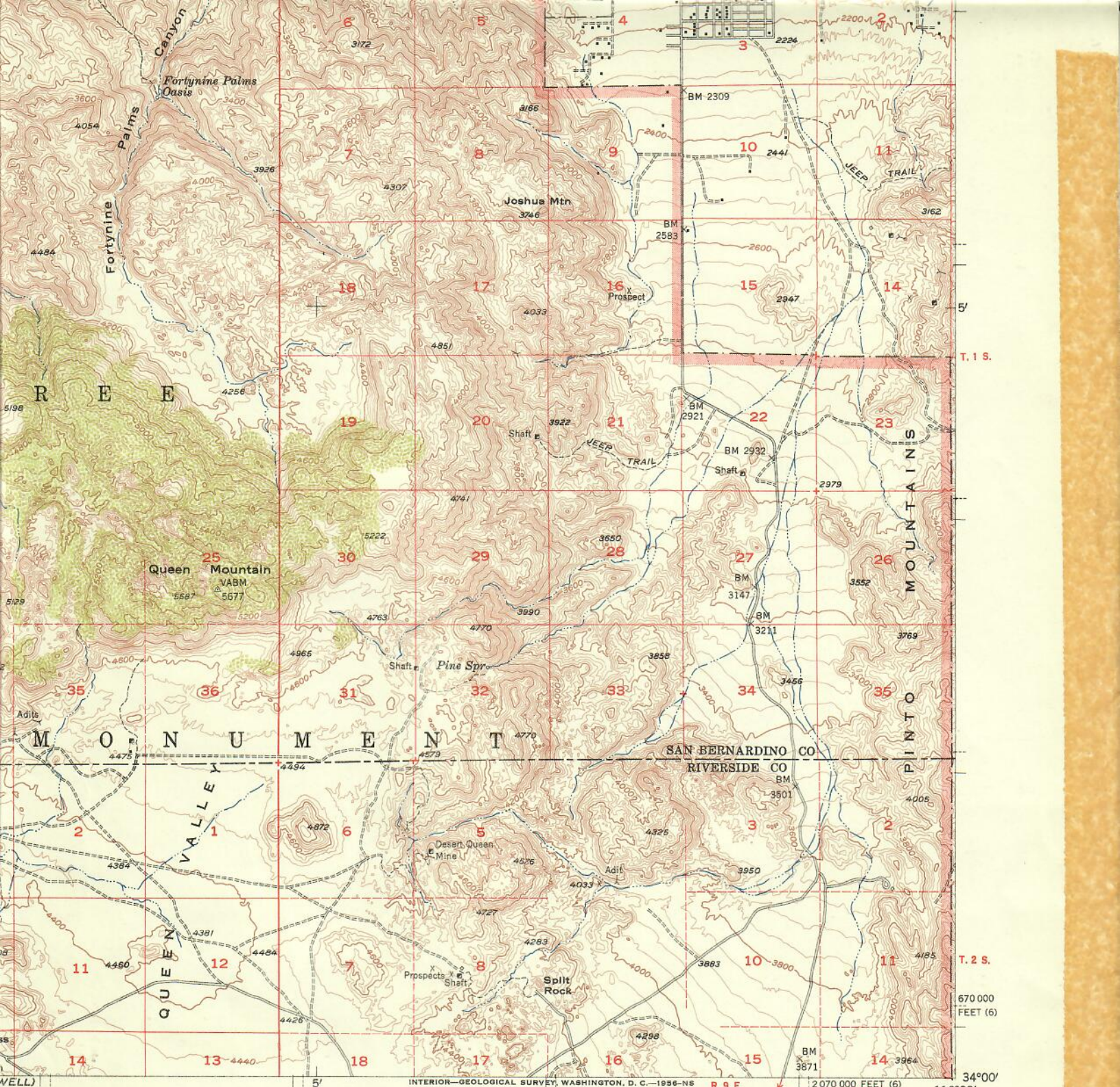


Mapped, edited, and published by the Geological Survey
 Control by USGS, USC&GS, and USCE
 Topography from aerial photographs by photogrammetric methods
 and by planetable surveys 1954-55. Aerial photographs taken 1937 and 1952
 Polyconic projection. 1927 North American datum
 10,000-foot grids based on California coordinate system, zones 5 and 6
 Dashed land lines indicate approximate locations



CONTOUR IN
 DASHED LINES REPR
 DATUM IS
 THIS MAP COMPLIES WITH NA
 FOR SALE BY U. S. GEOLOGICAL SURVEY, FEDERAL
 A FOLDER DESCRIBING TOPOGRAPHIC M

(EDOM)



VERTICAL INTERVAL 40 FEET
 CONTOUR INTERVAL 20-FOOT CONTOURS
 ELEVATIONS IN FEET ABOVE SEA LEVEL

NATIONAL MAP ACCURACY STANDARDS
 CENTER, DENVER, COLORADO OR WASHINGTON 25, D. C.
 AND SYMBOLS IS AVAILABLE ON REQUEST



ROAD CLASSIFICATION

Heavy-duty		Light-duty	
Medium-duty		Unimproved dirt	
	U. S. Route		State Route

The northeast quarter of this area is also covered by 1:24 000 scale map of the Twenty-nine Palms 7.5 minute quadrangle, surveyed in 1955

TWENTYNINE PALMS, CALIF.
 N 3400—W 11600/15

1955

(PINKHAM WELL)