



Plate 1.--Turtle net at location 5 between West Peninsula and iron pilings.



Plate 2.--Postcentral scutes of the carapace of adult female, tag No. 7461-65. The straight-line carapace length to the posterior edge of the postcentrals is 90.9 cm. The same measurement made to the notch between the postcentrals is 89.6 cm.



Plate 3.--Fat biopsy being taken from the inguinal region of adult female, tag No. 7565-69.



Plate 4.--Four coral heads seaward of West Peninsula with dense growths of Bryopsis pennata var. secunda. A foraging turtle can be seen over the first head in the foreground. Net location 2 is between the first and second heads. Net location 3 is between the second and outer two heads where waves regularly break.



Plate 5.--South shore of Johnston Island, looking east from the West Peninsula toward the row of iron pilings and the East Peninsula.



Plate 6.--South shore seawall and West Peninsula, looking from the southwest corner of Johnston Island.



Plate 7.--Adult female, tag No. 7451-55, SCL 100.1 cm, caught on October 4, 1983 at net location 1.



Plate 8.--Ventral view of tag No. 7451-55 along with Cris Balubar, former turtle fisherman at Johnston Island.



Plate 9.--Adult female, tag No. 7485-89, SCL 95.9 cm, 151.4 kg, caught on November 6, 1983 at net location 2. Site of the bone biopsy is visible on the 10th marginal scute.



Plate 10.--Adult female, tag No. 7565-69, SCL 92.5 cm, 141.8 kg, caught on November 13, 1983 at net location 2.



Plate 11.--Ventral view of tag No. 7565-69 showing red epizoic algae, and yellowish-orange color of plastron.



Plate 12.--Adult female, tag No. 7461-65, SCL 90.9 cm, caught on October 5, 1983 at net location 1.



Plate 13.--Adult male, tag No. 7490-94, SCL 89.7 cm, 115.9 kg, caught on November 7, 1983 at net location 7. The tail is 41.7 cm long.



Plate 14.--Mature male, tag No. 7512-16, SCL 89.0 cm, 114.1 kg, caught on November 10, 1983 at net location 2.



Plate 15.--Adult female, tag No. 7456-60, SCL 87.4 cm, caught on October 4, 1983 at net location 1.



Plate 16.--Ventral view of tag No. 7456-60.



Plate 17.—Adult female, tag No. 7560-64, SCL 87.0 cm, 108.6 kg, caught on November 12, 1983 at net location 2.



Plate 18.—Adult female, tag No. 7473-75, SCL 84.0 cm, 96.4 kg, caught on October 7, 1983 at net location 3.



Plate 19.--Adult female, tag No. 7521-25, SCL 83.7 cm, 85.9 kg, caught on November 11, 1983 at net location 7. The color of the carapace is masked by the presence of dried silt.



Plate 20.--Adult male, tag No. 7517-20, SCL 83.3 cm, 84.5 kg, caught on November 10, 1983 at net location 2. The tail is partly amputated, but completely healed.



Plate 21.--Adult female, tag No. 7495-99, SCL 82.9 cm, 87.7 kg, caught on November 7, 1983 at net location 2.



Plate 22.--Immature male, tag No. 7555-59, SCL 79.1 cm, 74.1 kg, caught on November 11, 1983 at net location 1. One of the five tags can be seen attached in the webbing between the 3d and 4th large scale on the left front flipper.



Plate 23.--Immature of undetermined sex, tag No. 7476-80, SCL 77.2 cm, 67.7 kg, caught on October 11, 1983 at net location 3.



Plate 24.--Immature of undetermined sex, tag No. 7509-11, SCL 75.6 cm, 68.2 kg, caught on November 8, 1983 at net location 7. This turtle was comatose for 2 h before being revived by inserting an air tube into the trachea through the glottis.



Plate 25.--Immature of undetermined sex, tag No. 7551-54, SCL 75.2 cm, 62.3 kg, caught on November 11, 1983 at net location 7. The posterior of the carapace is strongly tapered.



Plate 26.--Ventral view of tag No. 7551-54. A moderate amount of gray pigment is present in the ventral surface of the marginal and postcentral scutes. Some pigment also exists in the skin on the ventral of all four flippers and adjacent areas. This is the only turtle captured at Johnston showing such a characteristic.



Plate 27.--Immature female, tag No. 7481-84, SCL 72.8 cm, 63.6 kg, caught on November 6, 1983 at net location 2.



Plate 28.--Immature female, tag No. 7466-67, SCL 57.4 cm, caught on October 5, 1983 at net location 3.



Plate 29.--Green turtle caught off the south shore of Johnston Island in July 1969 by Cris Balubar (from the photo collection of C. Balubar).



Plate 30.--Green turtle, 79.5 kg, caught off the south shore of Johnston Island on January 14, 1970 by Cris Balubar (from the photo collection of C. Balubar).



Plate 31.--Green turtle, 107.3 kg, caught off the south shore of Johnston Island on January 18, 1970 by Cris Balubar (from the photo collection of C. Balubar).



Plate 32.--Carapace of green turtle caught off the south shore of Johnston Island in January 1972 by Cris Balubar (from the photo collection of C. Balubar).



Plate 33.—Green turtle caught off the south shore of Johnston Island in October 1972 by Cris Balubar (from the photo collection of C. Balubar).



Plate 34.—Immature green turtle caught off the south shore of Johnston Island in December 1973 by Cris Balubar (from the photo collection of C. Balubar).



Plate 35.--Emergent coral head at low tide close to the south shore of Johnston Island, between West Peninsula and the iron pilings. Bryopsis pennata var. secunda (dark green) and Caulerpa racemosa var. macrophysa (light green) are growing on top of the head.

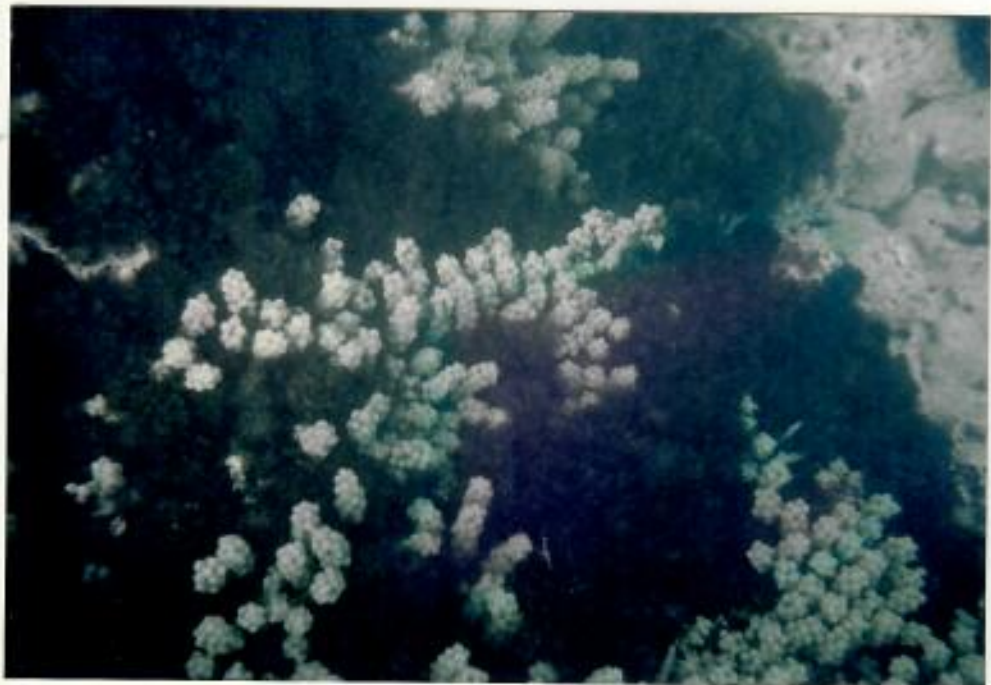


Plate 36.--Underwater view of Bryopsis pennata var. secunda and Caulerpa racemosa var. macrophysa growing together near the top of a coral head.



Plate 37.--Underwater view of Caulerpa racemosa var. macrophysa (right) and Caulerpa racemosa var. uvifera (left) growing together on calcareous substrate at dive location S.



Plate 38.--Coral-rubble beach accreted along a 200-m portion of Johnston Island's south shore seawall, between the iron pilings (foreground) and the West Peninsula (seen in the distance).



Plate 39.--East shore of Sand Island--Beach 1.



Plate 40.--East shore of Sand Island--Beach 2.



Plate 41.--Northwest point of Sand Island--Beach 3. Hikina (East) Island can be seen in the distance.



Plate 42.--South shore of Sand Island--Beach 4.



Figure 1.--Location of turtle nets.

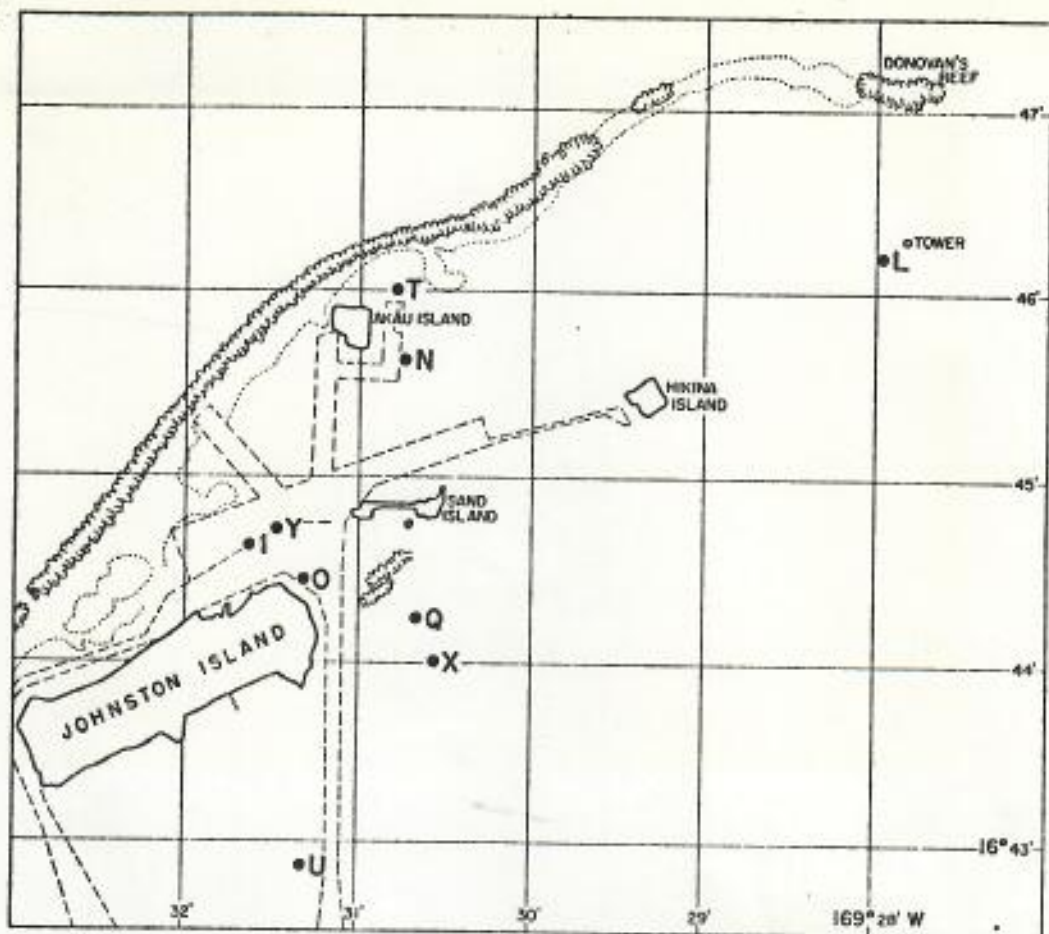


Figure 2.--Central location of 26 diving surveys with scuba. The bottom areas actually covered extend out in concentric circles from each location and overlap considerably for many dives.

A BASELINE ASSESSMENT OF MARINE TURTLES AT JOHNSTON ATOLL

Report prepared for the
U.S. Army Corps of Engineers
Pacific Ocean Division

By

George H. Balazs
Southwest Fisheries Center Honolulu Laboratory
National Marine Fisheries Service, NOAA
Honolulu, Hawaii 96812

February 1984