



FIELD COMMAND

# JOHNSTON ATOLL



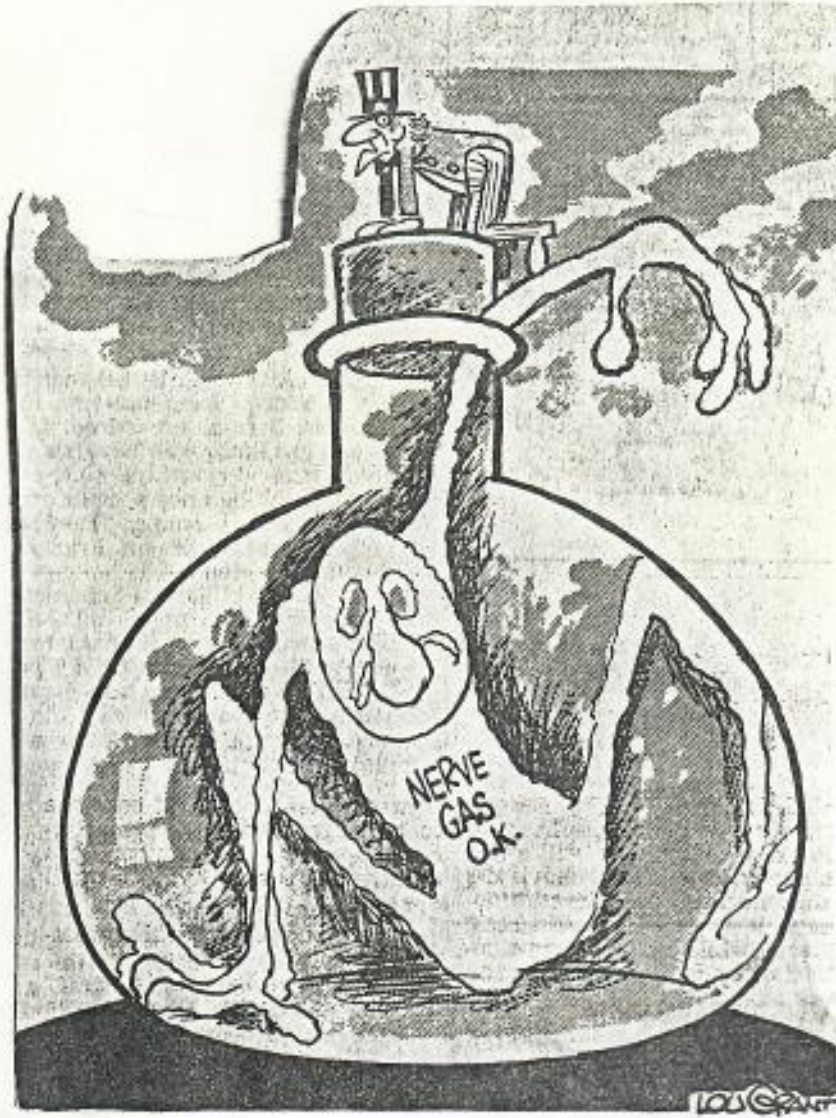
G. H. BALAZS JATA III  
(JOHNSTON ATOLL  
TURTLE ASSESSMENT)



## ORIENTATION GUIDE



**JATA III WARMLY WELCOMES YOU!**



## Deranged chemist caught

CHRISTCHURCH, New Zealand — In one of the biggest manhunts in the country's history, police arrested a deranged chemist Friday who had threatened to release a deadly nerve gas in Auckland, New Zealand's largest city.

Bruce Douglas Cameron, who escaped from a psychiatric clinic nine days ago, had threatened to release the gas unless authorities dropped criminal charges against him for producing and possessing the hallucinatory drug PCP, or "angel dust."

Police found Cameron hiding underneath a bed in a house with a copy of the chemical formula for the deadly gas sarin-GB, which was developed in Germany during World War II.

### TEN WILDLIFE REFUGES FOUND CONTAMINATED BY TOXIC CHEMICALS

Ten of the nation's 428 wildlife refuges are contaminated by toxic materials and another 74 have suspected or potential contamination problems, according to an Interior Department survey. The toxics—which include pesticides, PCBs, asbestos, selenium from irrigation water and heavy metals such as mercury—come from nearby agricultural, industrial or municipal sources and are carried by water into the refuges. Among the ten contaminated refuges are Wheeler in Alabama (DDT from industrial wastes), Kenai in Alaska (PCBs from oil and gas activities), Johnston Atoll, Hawaii (nerve and mustard gas, dioxin and plutonium from nearby military activities), Great Swamp, New Jersey (asbestos), and California's Kesterson (selenium) where this problem was recently pinpointed.

## Army reports 2 incidents with chemical weapons, takes corrective action

By Robert Greene  
Associated Press

WASHINGTON — The Army says it is taking several steps to prevent a repeat of the kind of human errors that caused two hazardous incidents this year in its chemical weapons disposal program at Johnston Atoll and Tooele Army Depot in Utah.

The changes were disclosed as the Army released reports dealing with the handling of a cleanup March 4 at the Johnston Atoll Chemical Agent Disposal System and a leak Jan. 28 at Tooele's Chemical Agent Munitions Disposal System.

In both cases, the chemical was the toxic nerve agent GB, said Lt. Col. John Chapla, an Army spokesman.

In neither incident was the public threatened, although some of the GB escaped into the atmosphere at Tooele and four workers were exposed in the Johnston Island case, the Army said. None of the four had any symptoms of nerve agent poisoning, it said.

At Johnston, where old, leaky M-55 rockets armed with GB are stored in bunkers, four workers were exposed during a cleanup, Chapla said. One reason was inadequate protective suits, he said. The other was that they were allowed to spend too much time in the area.

AS A RESULT of the investigation, the brigadier general in charge of the entire chemical demilitarization program will oversee

day-to-day operations at Tooele, centralizing control.

Control had been with the depot commander and the plant manager at Tooele.

The Army also has begun looking for a person to head quality control.

The Army is building a plant at Johnston that had been scheduled to go into operation in mid-1989. Much of the technology at Tooele, about 45 miles southwest of Salt Lake City, has been used to construct the plant at Johnston.

The Army, in an effort to get rid of its aging stockpiles of unitary chemical weapons by 1994, began the disposal project at Tooele in 1979.

Work at Tooele with toxic chemicals has been suspended since January's incident and will not resume "until the corrective actions have been completed," the Army said. Still, it says, the 1994 deadline can be met.

EVENTUALLY, the Army hopes to dispose of the old chemical weapons on each of the sites where they are stored: Johnston and Tooele; Aberdeen Proving Ground in Maryland; Newport Army Ammunition Plant in Indiana; Anniston Army Depot in Alabama; Pine Bluff Arsenal in Arkansas; Pueblo Army Depot in Colorado; Umatilla Army Depot in Oregon and Lexington Blue Grass Army Depot in Kentucky.

The Army said it was creating a panel of experts from industry and academia to address the technology transfer issue.

## Man hit by boat in critical condition

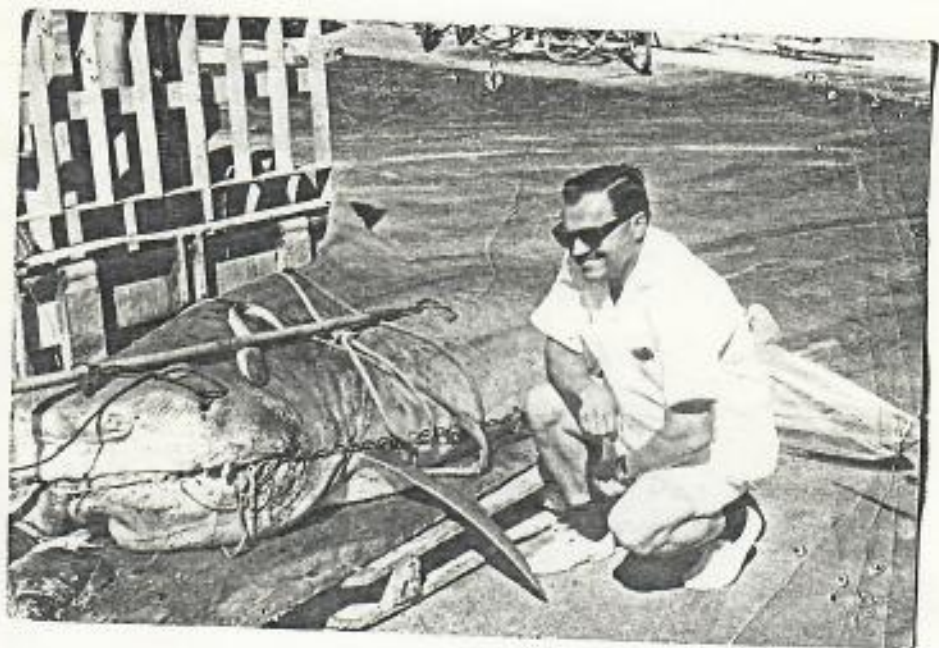
*Star-Bulletin Staff*

A 27-year-old Oahu man remained in critical but stable condition today at Straub Clinic & Hospital with multiple head and shoulder injuries suffered in a boating accident off Johnston Island yesterday.

The man is a contract worker on Johnston Island with Hawaiian Dredging and Construction Co. He was boating when he apparently fell overboard before 10:30 a.m.

The boat's skipper turned the craft around to pick up the victim and ran over him, said Coast Guard spokesman Lt. j.g. Steve Saepoff. He suffered a fractured skull, and the outboard motor blades cut the back of the victim's head and his shoulders, Saepoff said.

A Coast Guard rescue plane and a Navy flight surgeon were dispatched from Honolulu to Johnston, which lies about 700 miles west southwest of Hawaii.





**RECREATION  
HOURS OF  
OPERATION**

**BREAKFAST - 0530-0715  
LUNCH - 11-1245**

**Dinner**  
4:30 - 7pm

**Rowing Alley**  
Bldg. 206 - 2997  
Mon-Tues - 1730-2030  
Wed - 1700-2100  
Thurs-Sat - 1730-2030  
Sun - 1200-1800 (Open Rowing)  
1700-2200 (League Rowing)

**Post Office**  
Bldg. 241  
Mon - 0900-1000  
Tues-Wed - 0600-0800  
1130-1430  
1700-1900  
Thurs - 0800-1000  
Fri - 0800-1000/1130-1430  
Sat - 1130/1430

**Self Courts - For 3**  
Open daily - Sun mornings are regular play days. Open to all.

**Self Courts - Mini**  
Open daily (next to living quarters). See consideration after sunset.

**CLOSED SUNDAYS & HOLIDAYS EXCEPT FOR PROCESSING.** \*Note: outgoing mail on Sat AIR INC flight is processed on Sat as Fri. No registered mail on Mon/Thurs MAC flight.

**Arts & Crafts Center**  
Jct. Pl. 200 - 2825  
Wed-Sat - 1800-2100  
Sunday - 1300-1600

**Barber Shop**  
Bldg. 201 - 2204  
Sun-Fri - 1130-1600/1630-1930  
**CLOSED SATURDAY**  
\*Note: Appointments have priority over walk-ins on Mon, Wed & Fri.

**Base Exchange**  
Bldg. 208 - 2128  
Mon-Tues - 1130-1330  
**CLOSED WEDNESDAY**  
Thurs-Fri - 1130-1530/1630-1930  
Sat - 1130-1330/1630-1800  
Sun - 1200-1700

**Base Theater**  
2000 (2030 during daylight savings time)

**Basketball/Volleyball Courts**  
Daily - Over reservations available thru Rec. Serv.

**Bookstore**  
Bldg. 137 - 2335  
Mon - 0730-1615 \*Note: Books are due  
Tue - 1645-2030 in 1/2 hr before  
Wed-Fri - 1200-1800 closing.  
Sat-Sun - 0730-1600

**Male Welfare Social**  
Open daily. For reservations call Rec. Office. Users are responsible for cleanup.

**Island Women/Parties**  
Gasolina/Recreational Forum are available for special events. Pick up party request forms at Rec. Office.

**Library/Recording Studio**  
Mon-Fri - 0730-2300  
Sat - 0730-2300  
Sun - 0830-2100

**Studio**  
Mon-Fri - 0730-1600  
Sat - 1800-214  
Sun - 0730-1615  
1800-2245  
Sun - 0830-2045

**Swimming Area**  
West of Walk-in ELD - Open during daylight hours. Buddy system. Users must leave area clean.

**Package Store**  
Mon-Sat - 1830-1834  
**CLOSED SUNDAY**

**Photo Lab (200 Rec)**  
Open 24 hours. Must have authorization to use.

**Recreation Courts**  
Bldg. 24  
Mon-Sat - 0900-2200  
Sun - 1000-2100

**Shower/Spa**  
Open 24 hours - Please soap shower first!

**Swimming Pool**  
Mon-Tues - 1130-1930  
**CLOSED WEDNESDAY**  
Thurs-Sat - 1130-1930  
Sun - 1130-1730

**Tennis Courts**  
Open daily. Rubber-soled shoes only!

**Weightlifting Rm/Spa**  
Open 24 hours. Buddy system suggested. Users responsible for replacing equipment.

**Wood Hobby Shop**  
Bldg. 110  
Mon/Wed/Fri - 1830-2130  
Tues/Thurs - Closed  
Sat-Sun - 1200-1700  
Must have authorization to use