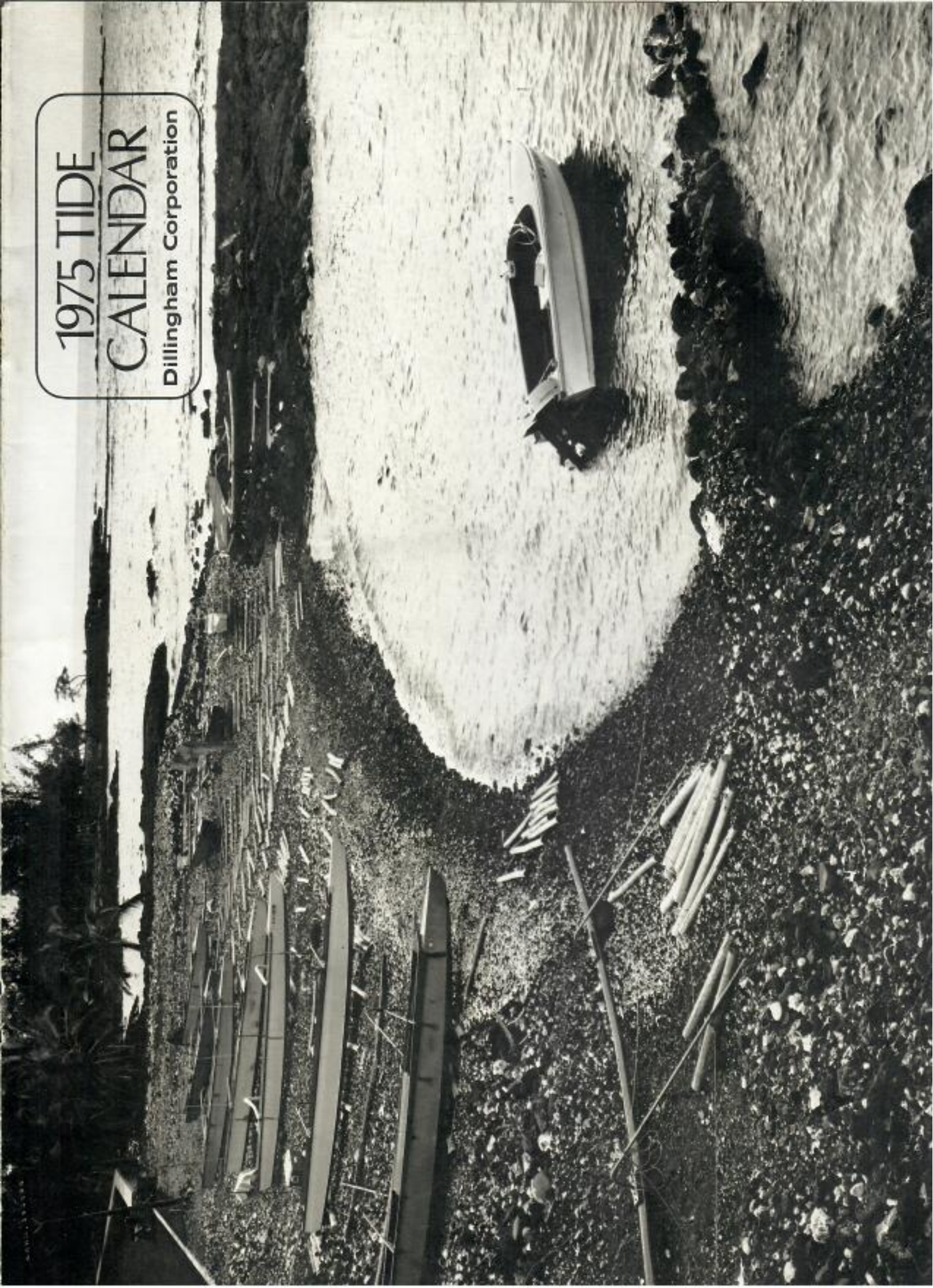


1975 TIDE

CALENDAR

Dillingham Corporation



PEOPLE OF THE SEA

JANUARY

SEICHI MATSUSHIGE
Lihue, Kauai
Surfcaster

Dedication to the sport of fishing is no better portrayed than it is in the surfcaster. No matter how inaccessible the spot, no matter how inclement the weather, our island shorelines are sure to be dotted with these hardy souls. In spite of its difficulties, the popularity of surfcasting attests to the thrill that can only come from pulling in a big one.

FEBRUARY

KELI MAWAE
Moomomi, Molokai
Diver

Among fishermen the legendary achievements of Hawaii's divers are a favorite topic of conversation, each island boasting that "theirs" is the best. Attaining great physical strength, they are able to reach awesome depths in search of the day's catch, often diving time and time again and using many spears in order to surface a particularly large fish. In all of man's many relationships with the sea theirs is perhaps the most demanding and most dangerous.

MARCH

ELI MAIHUI
Hana, Maui
Net Fisherman

Original Hawaiian throw nets bore little resemblance to their modern counterparts. Often square in shape, they were woven of fibers taken from banana, coconut and other plants, becoming so heavy and cumbersome when wet that the fisherman was made to take infinite care that his first throw would be the most productive possible.

The most subtle of changes in current, color and movement are a silent, demanding language between the net fisherman and the sea.

JULY

LOU GERONIMO
Hilo, Hawaii
Harbor Pilot

No text yet devised provides the knowledge the harbor pilot must bring to his command. Charged with knowing every shoal and shallow of his territorial waters, he carefully guides each ship to a safe berth, to reappear when she is again ready to put to sea. Long experience is his demanding teacher, a steady hand and keen eye the tools of his trade.

AUGUST

BOBBY BROWN
Kailua, Kona
Deep-Sea Fisherman

The worldwide reputation of Hawaii's waters as a mecca for deep-sea fishing annually attracts thousands of fishermen and would-be fishermen. Scanning the horizon for hours on end, the captain of the charter boat will silently watch for the slightest flicker of movement to indicate feeding birds or a moving school of bait fish. Currents, water temperature, bait selection and careful positioning within selected feeding grounds are other "tools" which he will employ. Springing to action when a screaming reel breaks the silence, he moves at lightning speed to assist the angler, knowing pride and pleasure that the dedication he has taken to learn his trade has paid off once again.

SEPTEMBER

DONALD KIDA
Honolulu, Hawaii
Torch Fisherman

On moonless nights when the wind is calm and tides are low, shallow waters are sure to blossom with the tell-tale beacons of Hawaii's torch fishermen. Usually working in groups of two or three, they spear their catch from among the abundance of sea creatures attracted to the beckoning light.

In our recent calendars, we have concentrated on Hawaii's past. This year we feature contemporary islanders who are intimately associated with the sea. Their photographs were taken by Boone Morrison. Carl Lindquist did the research and wrote the copy.

APRIL

HERBERT KAWAINUI KANE
and
"BUFFALO" KEAULANA
Honolulu, Hawaii
Canoe Builders

In documenting the history and cultural heritage of this land and its people, no written word nor scholarly treatise can approach the significance of an event which will soon commemorate the discovery of the Hawaiian Islands themselves. After years of painstaking research and in the face of tremendous economic odds, a small and dedicated group known as the Polynesian Voyaging Society is now readying an authentic double-hulled sailing canoe, and in 1978 will undertake to retrace an ancestral voyage from Hawaii to Tahiti and back.

MAY

GEORGE INAMURA
Honolulu, Hawaii
Bottom Fisherman

Fishing at night and using handlines to reach incredible depths ranging to 140 fathoms and more, Hawaii's bottom fishermen are members of a unique sporting fraternity. Carefully positioning their boats to bring them as close as possible to undersea "cliffs," they lower multiple hooks baited for onaga, giant opakapaka and other highly desirable sea fish. Great strength and stamina are required as a line bearing several fish is slowly pulled hand over hand back into the tossing boat, but a good catch makes it all worthwhile.

JUNE

GEORGE "KUNI" HIGASHIDE
Honolulu, Hawaii
Aku Boat Captain

The legacy of commercial aku fishing dates back to the early 1900's when the arrival of the first Japanese to the territory also saw the introduction of the now-famous "sampan."

Powered by sail, these first frail craft employed design techniques that have been incorporated in the most modern, steel-hulled craft that today are the pride of the fleet. Like their counterparts in those early days, the aku fishermen of today must endure long, lonesome hours at sea, a percentage of the catch their reward for giving of the skills and endurance the job demands.

OCTOBER

JOHN MIHA
Honolulu, Hawaii
Tugboat Captain

The first tugboat of record in Hawaii was the steam driven "Pele," commissioned to "take up work too heavy for whale boats and for oxen and men straining at lines along the towpath which later became Richards Street." The year was 1854.

At the turn of the century, four brothers named Young founded an enterprise which would ultimately grow to serve all of the islands in their development, and help shape the destiny of this island state — the nation's only wholly maritime community.

Handed down from generation to generation, the rugged sailing traditions of the tugboat crew are a part of the past, the present and the future of Hawaii.

NOVEMBER

SOLOMON HOOPAI
Ulaiho, Maui
Harpooneer

Perhaps nowhere else in Hawaii is the prized ulua the target of sure-footed harpooneers. On days when heavy rains have swelled the mountain stream which empties into the sea here, huge fish weighing as much as 125 pounds struggle upstream, swimming sideways to reach a pond where a feast of guava and mountain apple awaits. The harpooneer waits, as still as the shadow of the stone upon which he stands, and having planted his lance leaps into the stream to wrestle his struggling catch to shore.

DECEMBER

BILL KAHALE and LOUIS PAULO, JR.
Miloli'i, Hawaii
Opelu Fishermen

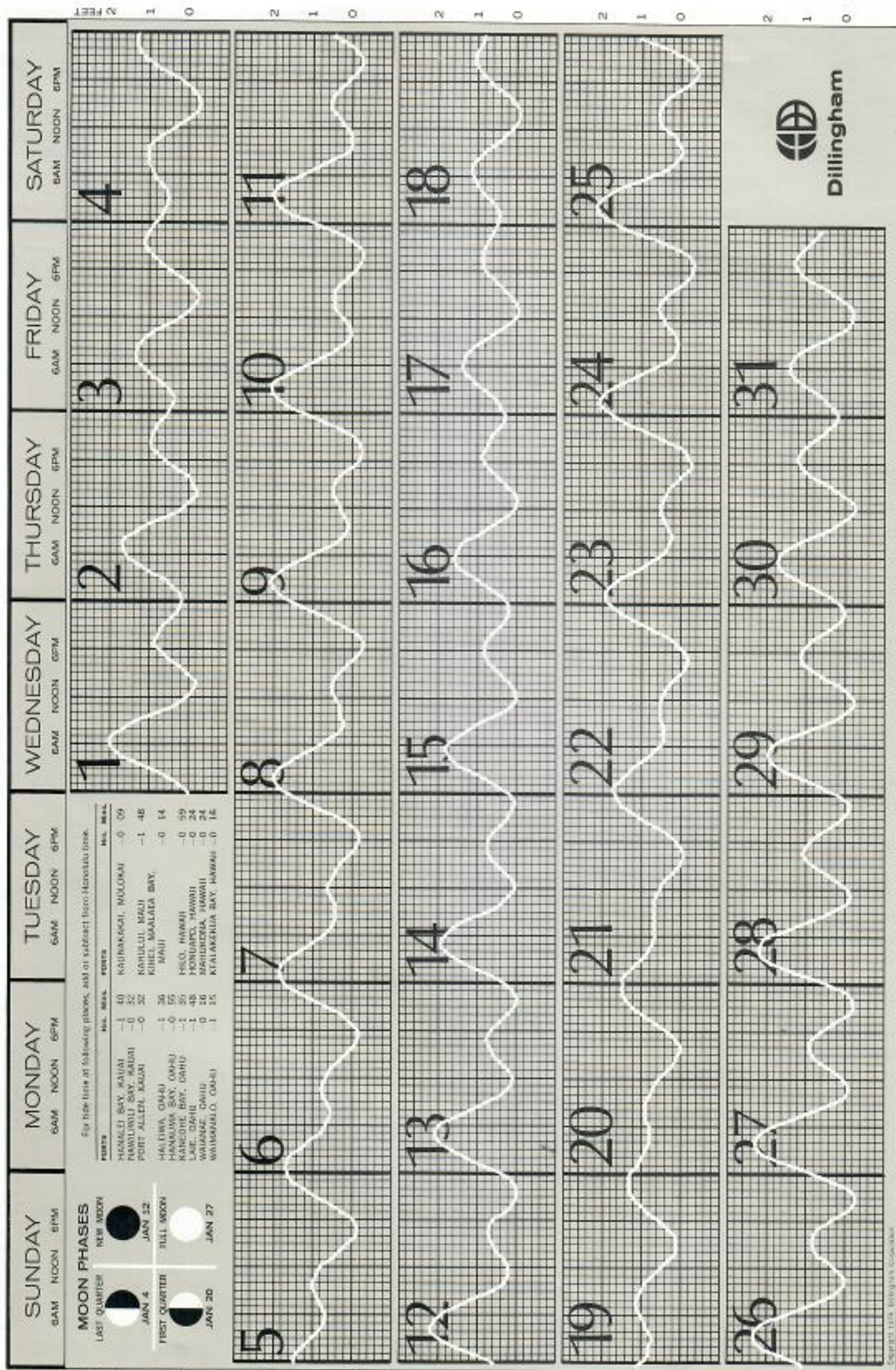
Chosen for their proximity to good fishing grounds, ancient Hawaiian fishing villages often provided only the most minimal of creature comforts, imposing hardships which served to magnify the dedication and communal relationship of its inhabitants.

Returning in their canoes from a long day in search of opelu and other fish, the people of Miloli'i perpetuate a tradition that has been handed from father to son for untold generations.

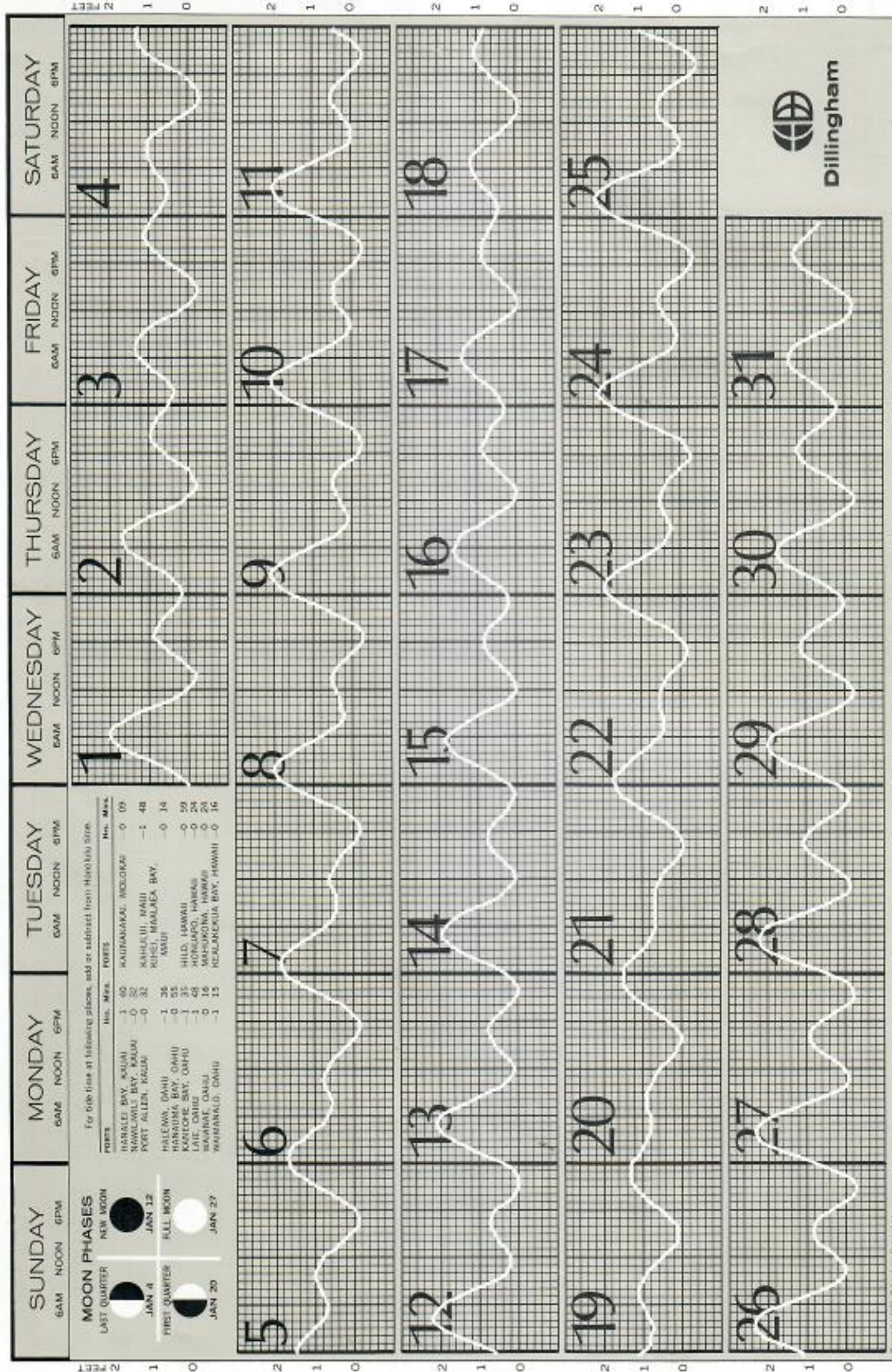


SEICHI MATSUSHIGE
Lihue, Kauai
Surfcaster

JANUARY 1975 TIDE CHART



JANUARY 1975 TIDE CHART



MOON PHASES

LAST QUARTER JAN 4	NEW MOON JAN 12
FIRST QUARTER JAN 20	FULL MOON JAN 27

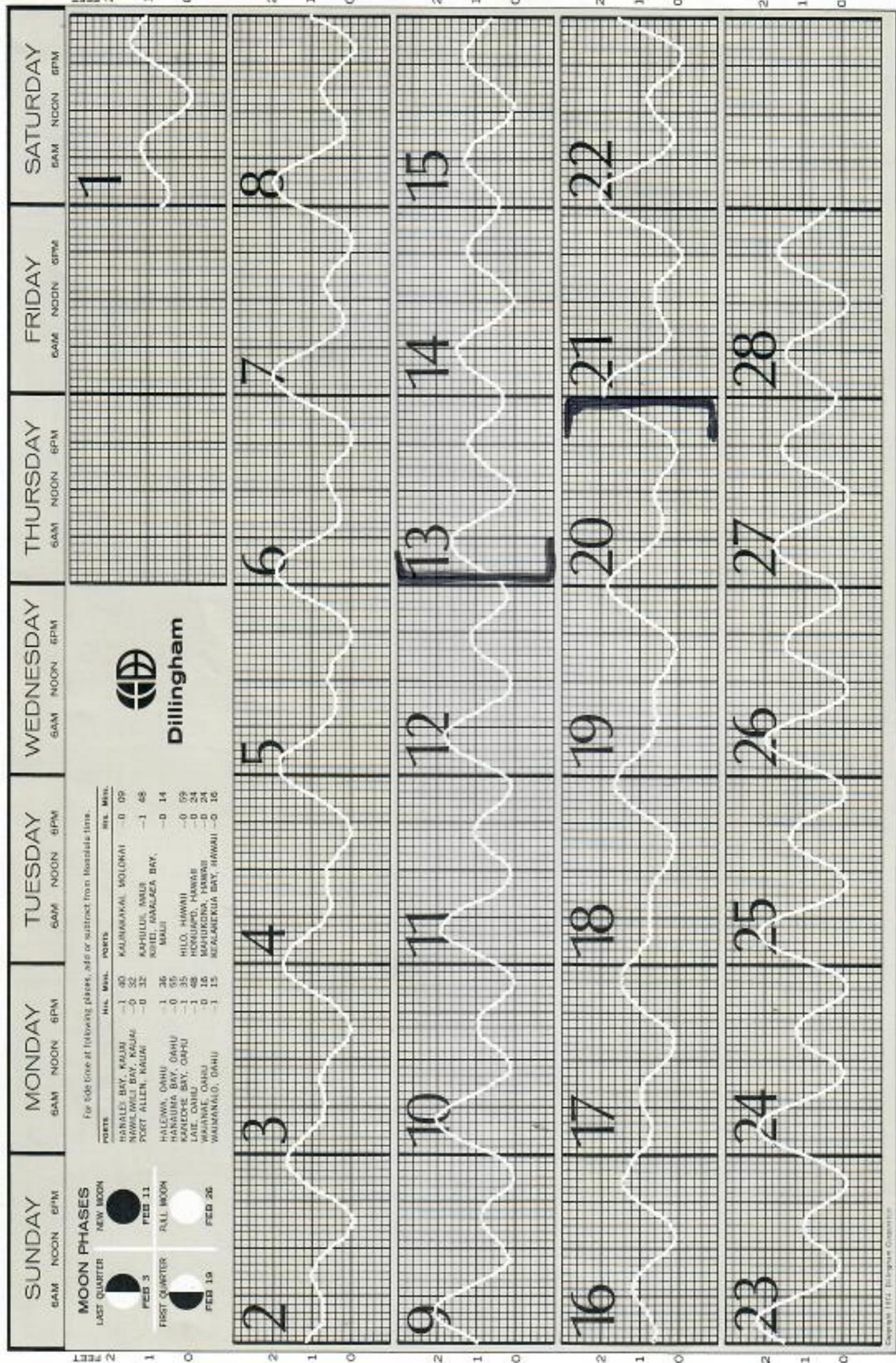
For high time at following places, add or subtract from Honolulu time.

PORTS	Hrs. Mins.	PORTS	Hrs. Mins.
HAWAII BAY, OAHU	+ 00	KAIKAIKAI, MOLOKAI	- 00
MOLOKAI BAY, MOLOKAI	- 00	KAHALUI, MAUI	- 48
PORT ALLEN, MAUI	- 00	KUHOI, HAWAII BAY	- 00
HALEIWA, OAHU	- 00	MAUI	- 00
HAWAII BAY, OAHU	- 00	HILO, HAWAII	- 00
KAPICONE BAY, OAHU	- 00	HONOLULU, HAWAII	- 00
LAIE, OAHU	- 00	MAUNALOA, HAWAII	- 00
WAIKANE, OAHU	- 00	KAUNAKOHA BAY, HAWAII	- 00
WAIKANELO, OAHU	- 00		



Dillingham

FEBRUARY 1975 TIDE CHART



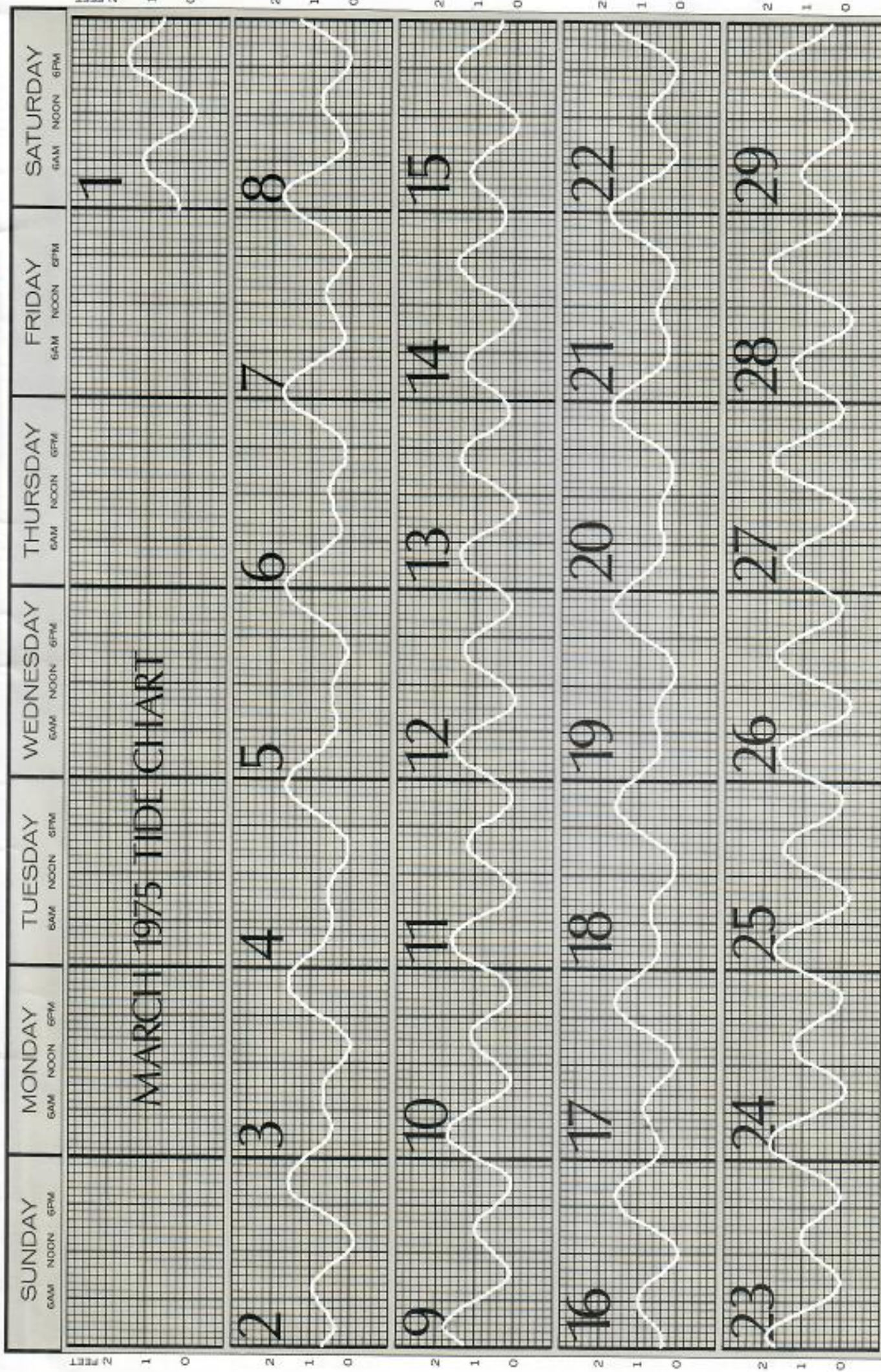
For tide time at following places, add or subtract from Honolulu time.

PORTS	H.L.	M.H.L.	POINTS	H.L.	M.H.L.
HAWAII BAY, KAUAI	-1	40	KALUNANUKAI, MOLOKAI	-0	09
NAWALEWALE BAY, KAUAI	-0	52	KAPULU, MAUI	-1	48
PORT ALLEN, MAUI	-0	32	KOHO, MAUI	-0	14
HALEWANA, OAHU	-1	26	HILO, HAWAII	-0	09
HANALEI BAY, OAHU	-0	55	HONOLULU, HAWAII	-0	00
KAALEOPE BAY, OAHU	-1	35	MAIPOKONA, HAWAII	-0	24
LAIE, OAHU	-1	48	KEALEKUA BAY, HAWAII	-0	16
WAIKANE, OAHU	-0	16			
WAIMANALO, OAHU	-1	15			



ELI MAIHUI
Hana, Maui
Net Fisherman





For tide time at following places, add or subtract from Honolulu time.

PORTS	MIL.	POINTS	Hrs. Max.		
HANALEI BAY, KAUAI	-1	40	KAUAIKAWAI, NIOLOKAI	-0	20
HAWAII BAY, MAUI	-0	32	KASULUI, MAUI	-1	48
PORT ALEXANDER, KAUAI	-0	32	KUNIA, MAALAEA BAY	-0	14
HALEIWA, OAHU	-1	26	MAUI	-0	14
HANALEI BAY, OAHU	-0	55	HONOLOULU, HAWAII	-0	39
KOAHOLE BAY, OAHU	-1	35	HONOLULU, HAWAII	-0	24
LAKE OAHU	-1	48	MAHUKONA, HAWAII	-0	24
WAIKANE, OAHU	0	18	WAIKANE, HAWAII	-0	24
WAIMANALO, OAHU	-1	15	WAIKANE, HAWAII	-0	24

MOON PHASES

LAST QUARTER	NEW MOON
MAR 4	MAR 12
FIRST QUARTER	FULL MOON
MAR 20	MAR 27

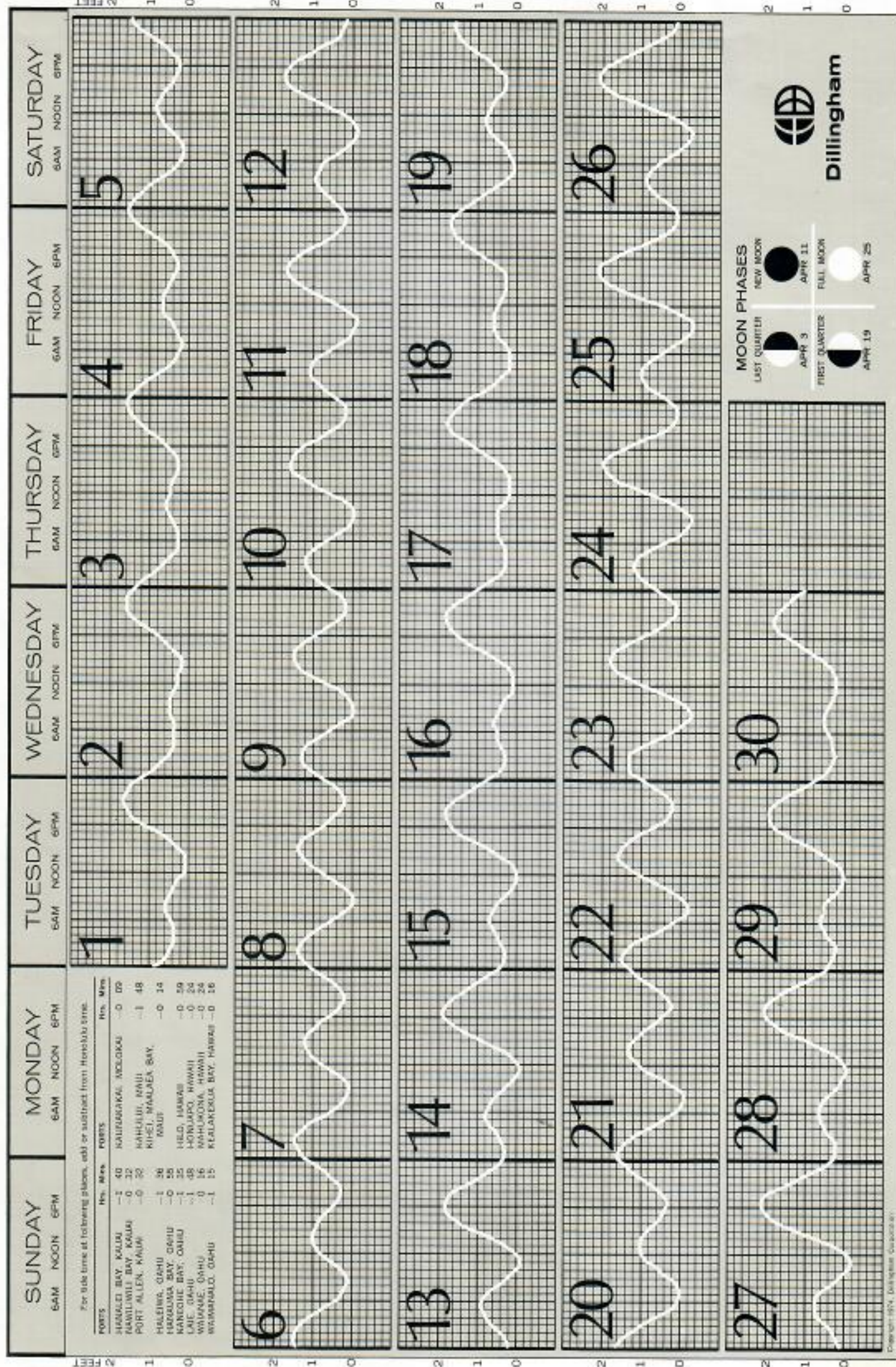


Dillingham

HERBERT KAWAINUI KANE
and
"BUFFALO" KEAULANA
Honolulu, Hawaii
Canoe Builders



APRIL 1975 TIDE CHART

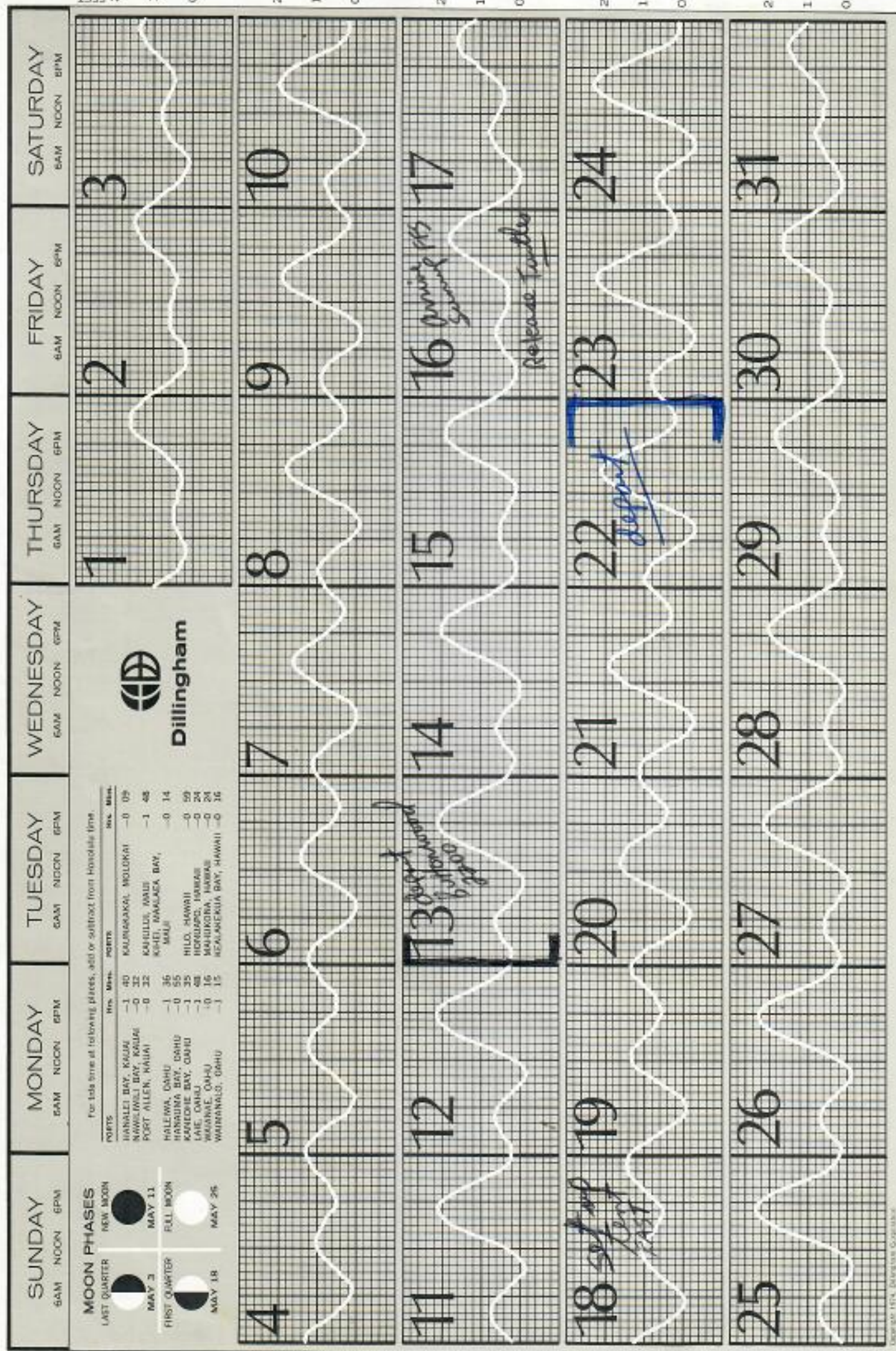


Dillingham



GEORGE INAMURA
Honolulu, Hawaii
Bottom Fisherman

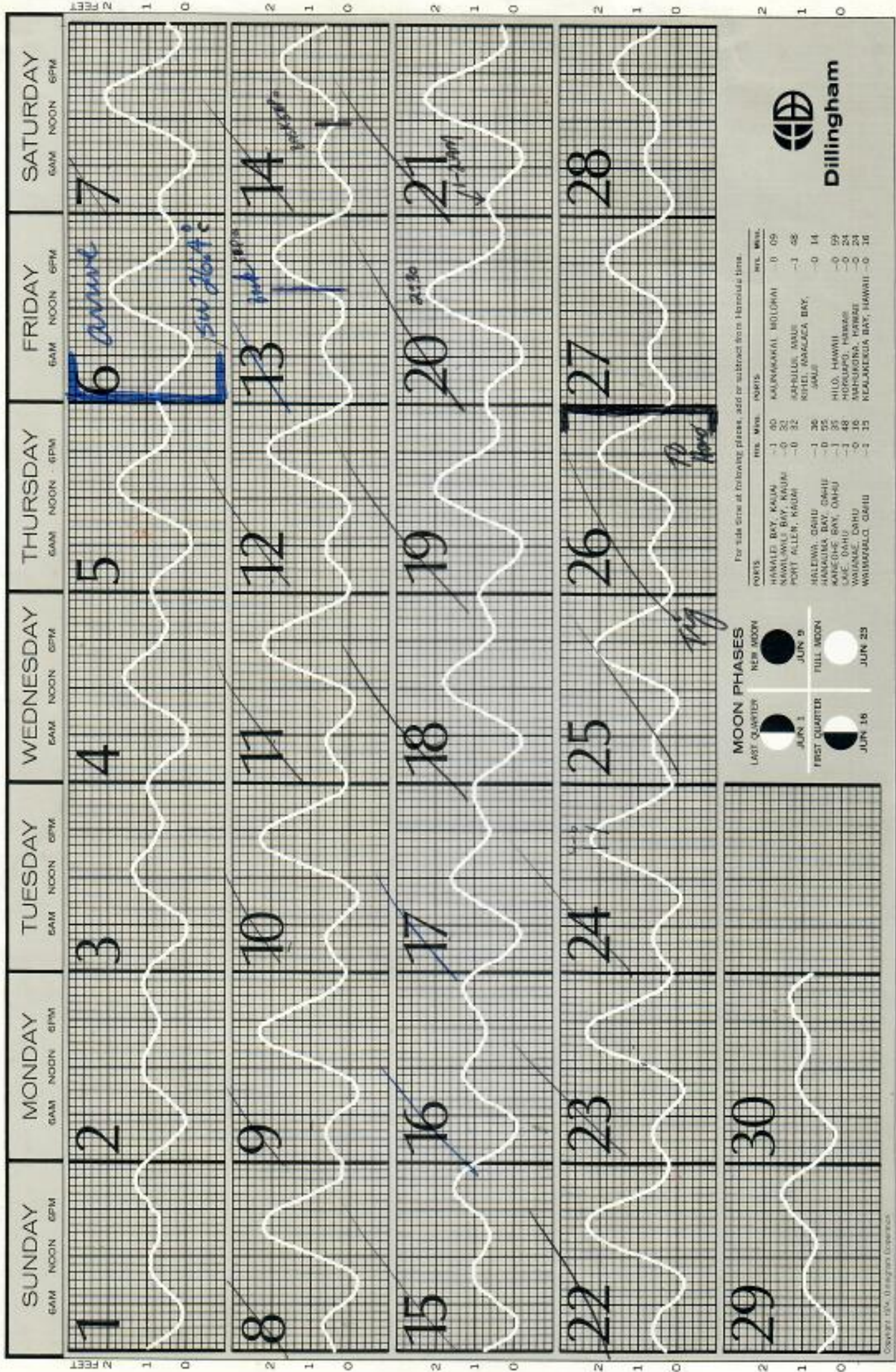
MAY 1975 TIDE CHART





GEORGE "KUNI" HIGASHIDE
Honolulu, Hawaii
Aku Boat Captain

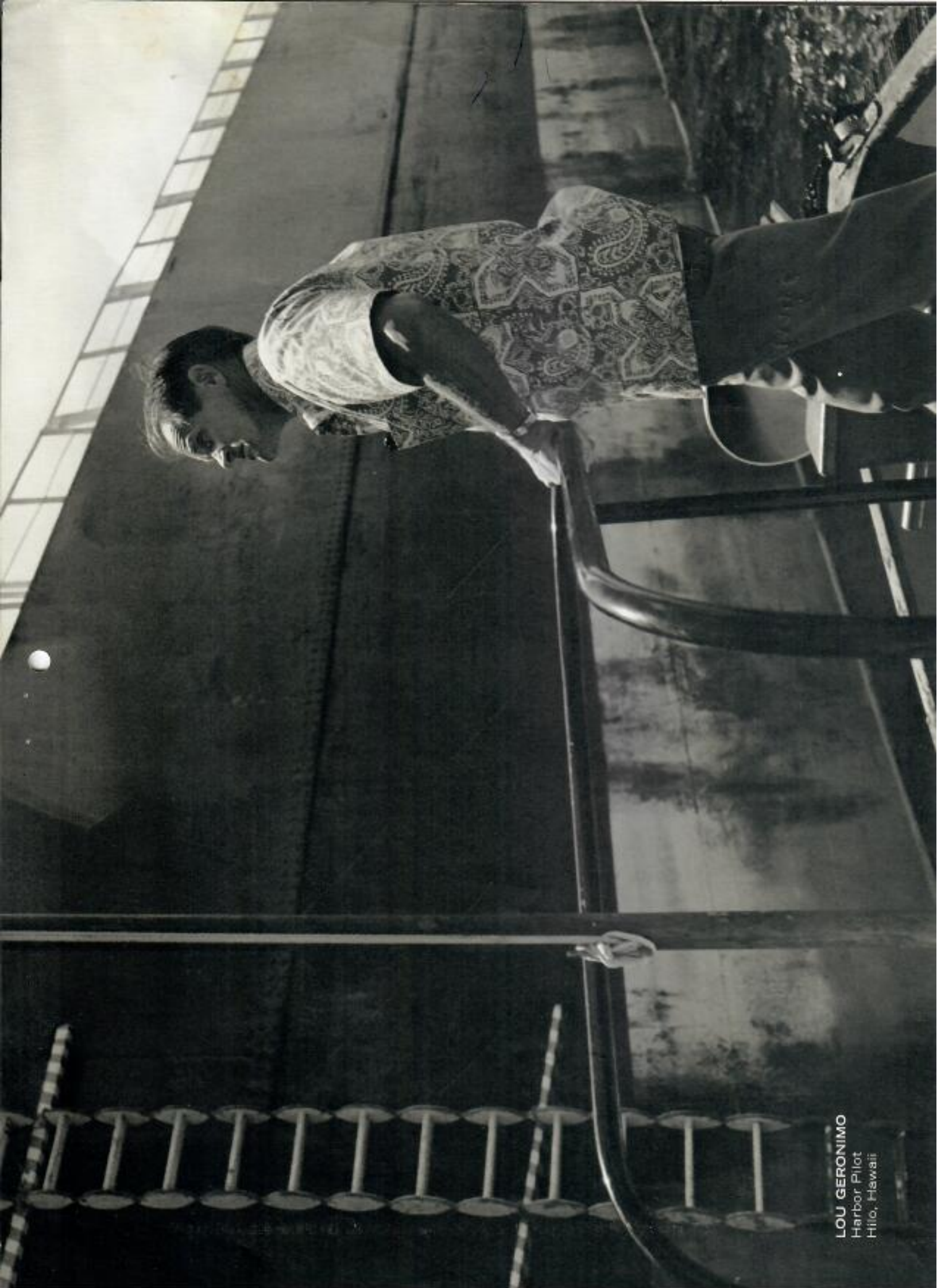
JUNE 1975 TIDE CHART



For tide times at following places, add or subtract from Honolulu time

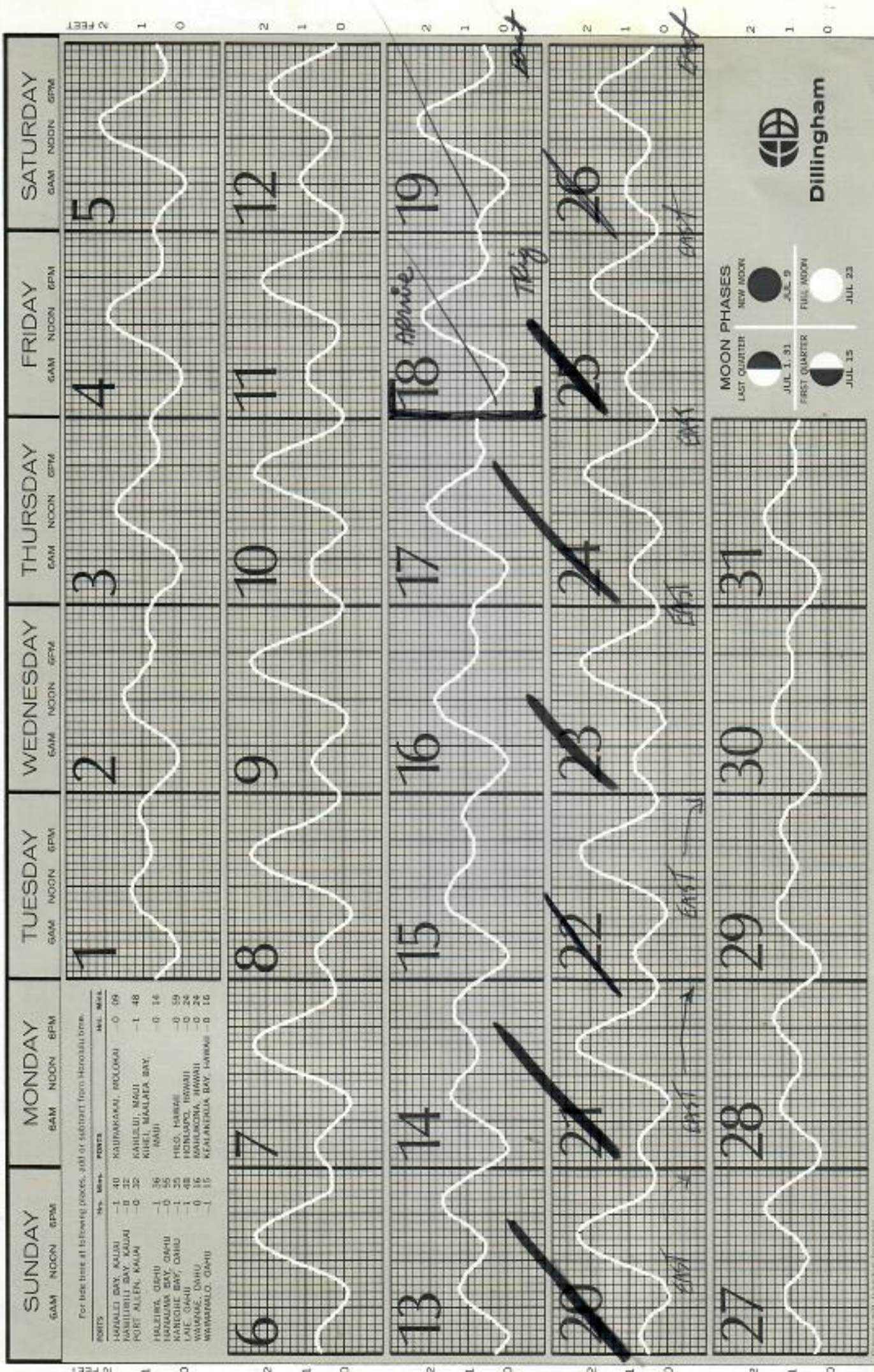
PLACES	HRS. MIN.	HRS. MIN.	
HAWAII BAY, KAUAI	-1 00	KAILUAHAKA, MOLOKAI	0 09
NAWILIWILI BAY, KAUAI	-0 32	HOHULILO, MAUI	-1 48
PORT ALLEN, KAUAI	-0 32	KIHEI, MAHALA BAY, MAUI	-0 14
HALEIWA, OAHU	-1 30	HILO, HAWAII	-0 59
HANALEIUA BAY, OAHU	-0 55	HONOLULU, HAWAII	-0 24
KAPICHOE BAY, OAHU	-1 35	MAHUKONA, HAWAII	-0 24
LAKE, OAHU	-1 48	KEALEKUA BAY, HAWAII	-0 36
WAIKANE, OAHU	-0 16		
WAIMANALO, OAHU	-1 15		





LOU GERONIMO
Harbor Pilot
Hilo, Hawaii

JULY 1975 TIDE CHART



MOON PHASES

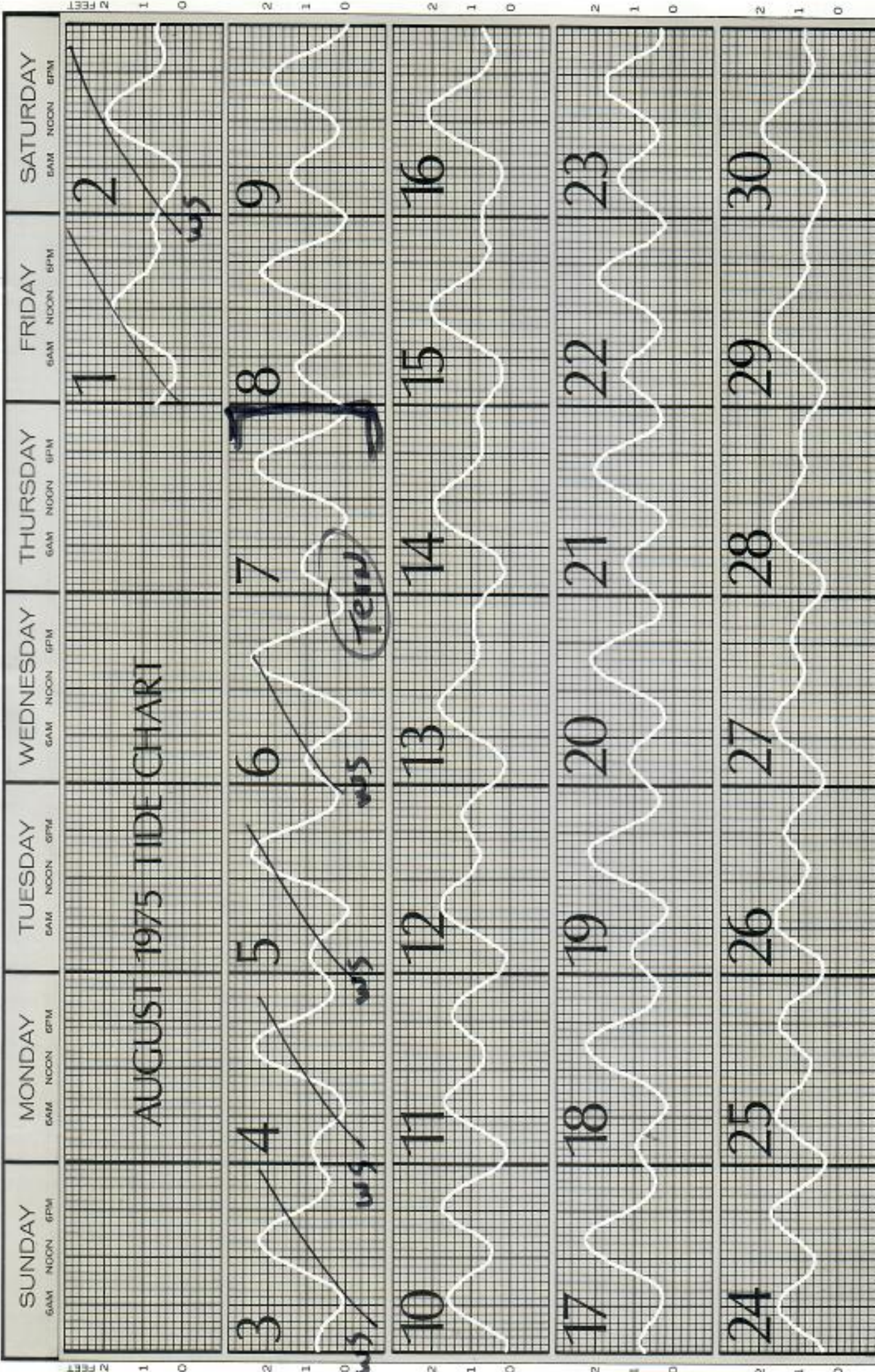
LAST QUARTER	NEW MOON
JUL 1, 9:31	JUL 9
FIRST QUARTER	FULL MOON
JUL 15	JUL 23



Copyright 1975, Dillingham, Inc. 10-75000

BOBBY BROWN
Kailua-Kona
Deep-sea Fisherman





MOON PHASES

NEW MOON AUG 7	FIRST QUARTER AUG 14
FULL MOON AUG 21	LAST QUARTER AUG 29

For tide times at following places, add or subtract from Honolulu time.

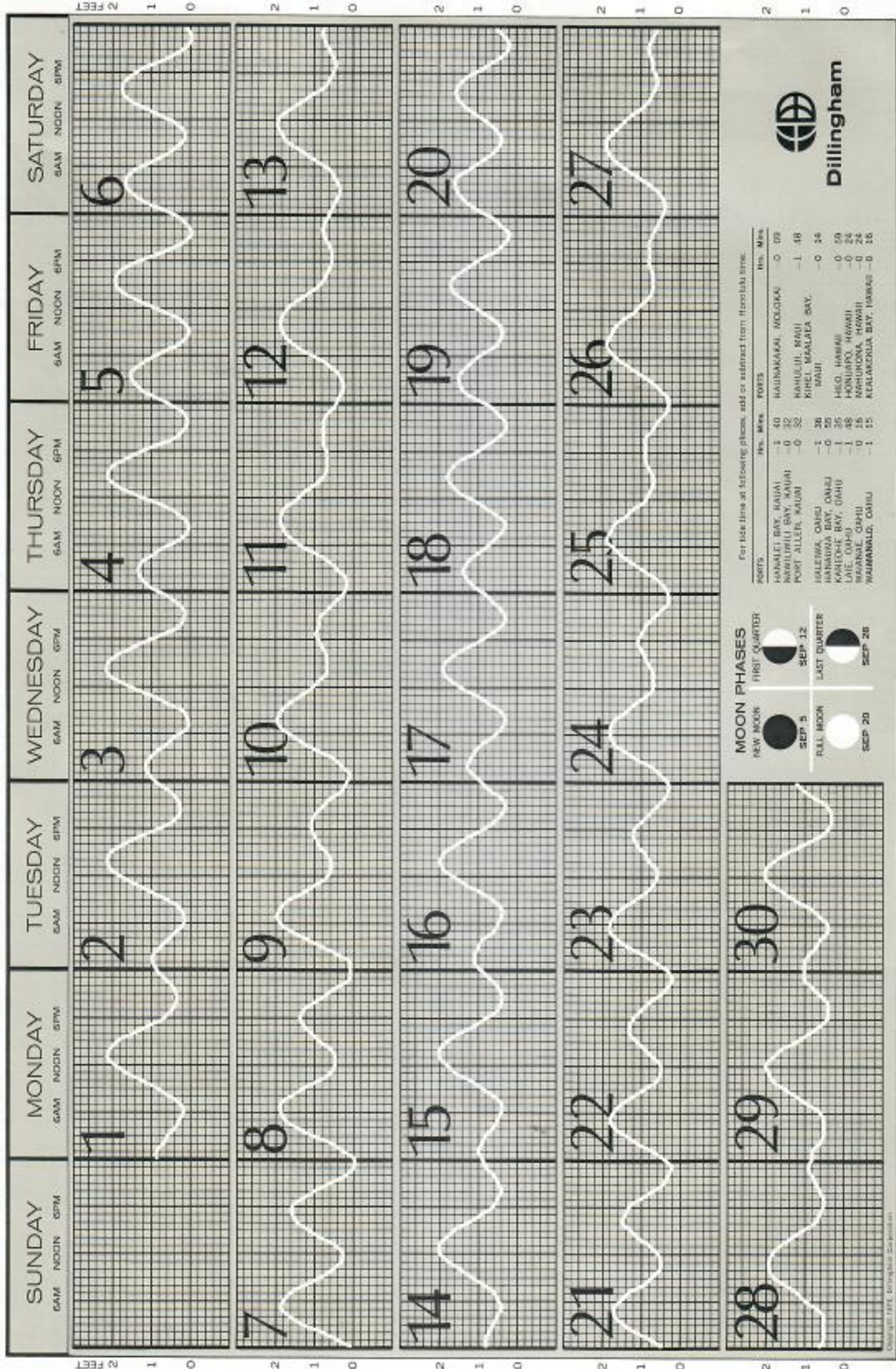
PLACES	Hrs.	Min.	POINTS	Hrs.	Min.
HANALEI BAY, KAUAI	-1	40	KALIMANAKAI, MOLOKAI	-0	00
NAWILIWILI BAY, KAUAI	-0	22	KAHULUI MAUI	-1	08
PORT ALLEN, KAUAI	0	22	KIHEI, MAUI	-0	14
HALEIWA, OAHU	-1	36	HILO, HAWAII	-0	50
HANAULANI BAY, OAHU	-0	55	HONOLULU, HAWAII	-0	24
KANEIHEHE BAY, OAHU	-1	35	KAUNAOA BAY, HAWAII	-0	24
LAIE, OAHU	-1	48	KEAUNAOA BAY, HAWAII	-0	16
WAIKANE, OAHU	-0	36	KAUNAOA BAY, HAWAII	-0	16
WAIMANALO, OAHU	-1	15			





DONALD KIDA
Honolulu, Hawaii
Torch Fisherman

SEPTEMBER 1975 TIDE CHART



For tide time at following places, add or subtract from Honolulu time.

PORTS	Hrs. Min.	PORTS	Hrs. Min.
HANALEI BAY, KAUAI	-1 40	HAUAKAKAI, MOLOKAI	0 09
KAHULUI BAY, MAUI	-0 32	KAHULUI, MAUI	-1 48
PORT ALOHA, MAUI	-0 32	KIHEI, MAUI	0 00
KAHOOLAWE BAY, OAHU	-1 26	KIHEI, MAUI BAY, MAUI	0 24
KAHOOLAWE BAY, OAHU	-1 26	HONO, HAWAII	0 09
KAHOOLAWE BAY, OAHU	-1 26	HONOLULU, HAWAII	0 00
KAHOOLAWE BAY, OAHU	-1 26	KAHUKOHOA, HAWAII	0 24
KAHOOLAWE BAY, OAHU	-1 26	KAHOOLAWE BAY, HAWAII	0 00
KAHOOLAWE BAY, OAHU	-1 26	KAHOOLAWE BAY, HAWAII	0 00

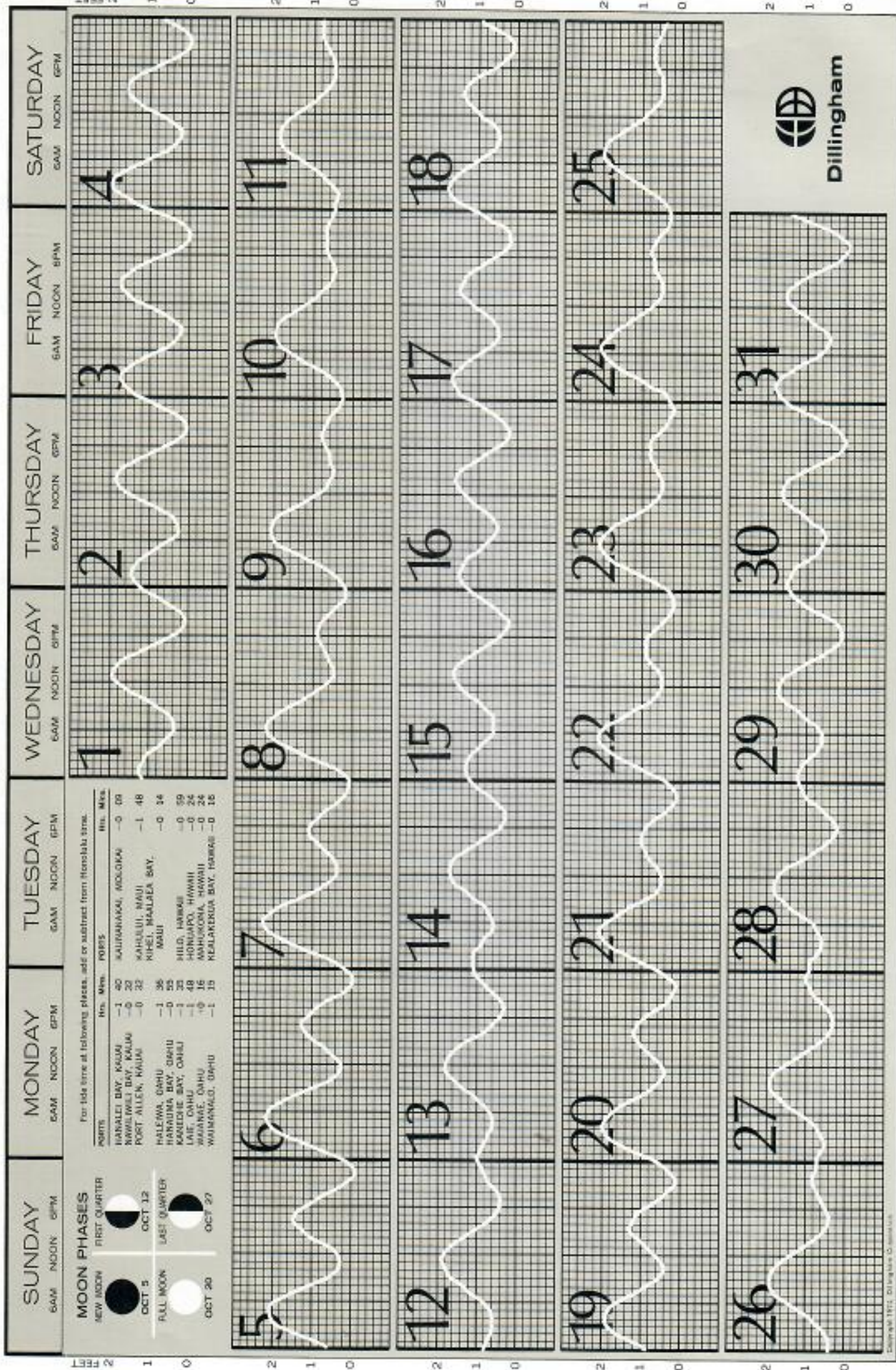


Dillingham



JOHN MIHA
Honolulu, Hawaii
Tug Boat Captain

OCTOBER 1975 TIDE CHART



For tide time at following places, add or subtract from Honolulu time.

PORTS	Hrs.	Min.	PORTS	Hrs.	Min.
HANALEI BAY, KAUAI	-1	40	KAIUMAKUAI, MOLOKAI	-0	00
KAWILIWEI BAY, KAUAI	-0	30	KAHULUI, MAUI	-1	48
PORT ALLEN, MAUI	-0	32	KIHEI, MAUI	-0	14
HALEIWA, OAHU	-1	36	HILO, HAWAII	-0	59
HANALEI BAY, OAHU	-1	35	HONOLULU, HAWAII	-0	24
KASSELBIE BAY, OAHU	-1	48	KAUNAOA, HAWAII	-0	24
LAIE, OAHU	-0	16	KEALEKOA BAY, HAWAII	-0	16
WAIKANE, OAHU	-1	15			

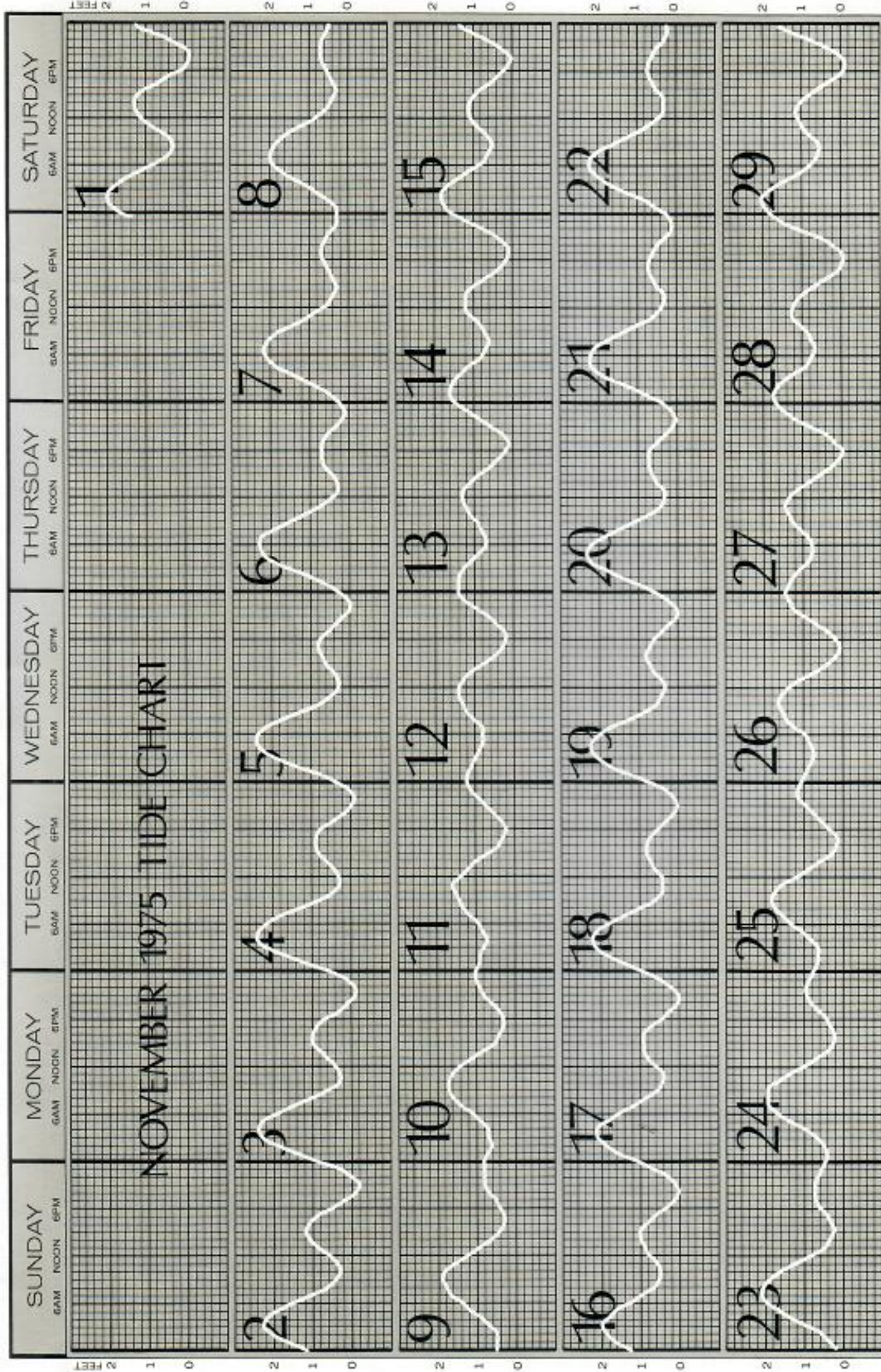


Dillingham

Copyright 1975, Dillingham, Oahu, Hawaii



SOLOMON HOOPAI
Ujaino, Maui
Harpooneer
Turtle?



For tide time at following places, add or subtract from Honolulu time.

PLACES	NAL. MEAL	PORES	Hrs. Mins.
HONOLULU BAY, HAWAII	-1	40	HAIKAKAKAI, MOLOKAI -0 07
MAUI	-0	32	KAHULUI, MAUI -1 48
KAHULUI BAY, MAUI	-0	52	KIHEI, MAUI -0 14
PORT ALLEN, MAUI	-1	26	HILIC, HAWAII -0 59
HALEIWA, OAHU	0	55	HONOLULU, HAWAII 0 24
HONOLULU BAY, OAHU	-1	48	WAIKIKI, HAWAII 0 24
KANEOHE BAY, OAHU	-1	48	WAIKIKI, HAWAII 0 24
LAIE, OAHU	-1	48	WAIKIKI, HAWAII 0 24
WAIKIKI, OAHU	-1	48	WAIKIKI, HAWAII 0 24

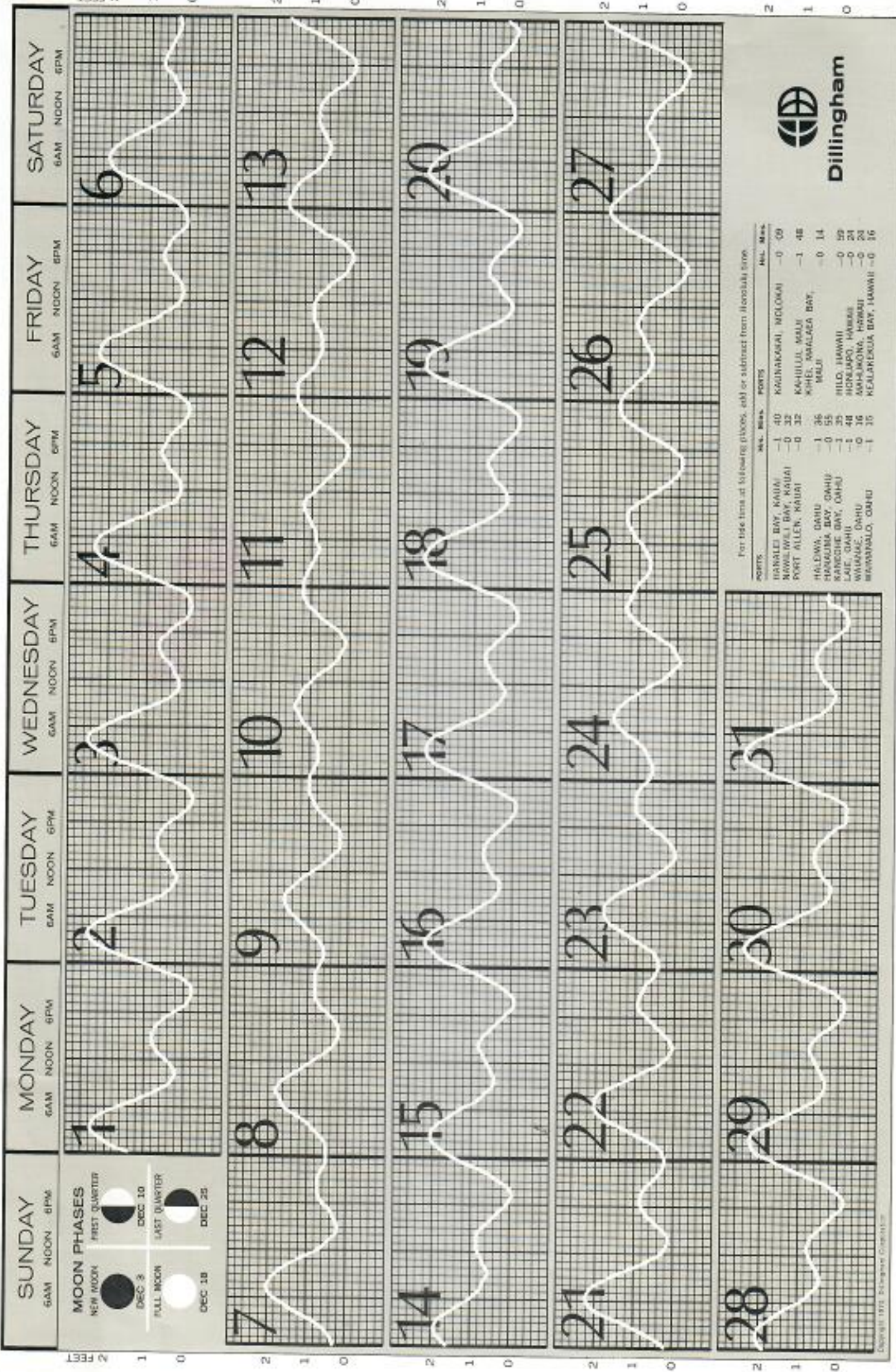


Dillingham



BILL KAHELE and LOUIS PAULO, JR.,
Opelu Fishermen
Miloii, Hawaii

DECEMBER 1975 TIDE CHART



Per tide time at following places, add or subtract from Honolulu time

PORTS	MIN.	MAX.	POINTS	REL. MAX.	
HANALEI BAY, KAUAI	-1	40	KOAHUKOHAU, MOLOKAI	-0	00
HOWLAND BAY, KAUAI	-0	32	KAHULUI, MAUI	-1	48
PORT ALLEN, KAUAI	-0	32	KAIHUA, MAUI	-1	48
HALEIWA, OAHU	-1	36	KAIHUA, MAUI	-1	48
HONOLULU BAY, OAHU	-0	55	HILO, HAWAII	-0	14
MANOAO BAY, OAHU	-1	35	HILO, HAWAII	-0	22
LAIE, OAHU	-1	48	HONOLULU, HAWAII	-0	21
WAIKANE, OAHU	-0	36	KAHOLAONA, HAWAII	-0	23
WAIANAI, OAHU	-1	35	KAHALA, HAWAII	-0	25
WAIANAI, OAHU	-1	35	KAHALA, HAWAII	-0	25





Dillingham

BOX 3463 • HONOLULU, HAWAII 96801

THIRD CLASS



**1975
TIDE
CALENDAR**

George Balazs

Box 1346

Kaneohe, HI 96744