



1980

TIDE CALENDAR

Dillingham Corporation

Hawaii's Timeless Tides...

The changing tides mark not only the passing of time, but link man to his spiritual moorings. Sunrise, sunset . . . dusk and dawn affect the tides and place their indelible mark on the day. It is at these transitory moments that man most easily shares Hawaii's encompassing beauty, a finite part of nature's infinite plan.

This harmonious interaction between man and his environment is captured by the perceptive eye of photographer Allan Seiden in this year's tide calendar. We hope you enjoy this photographic impression of traditional Hawaii for 1980.

The 1980 calendar marks the 25th anniversary of Dillingham's Tide Calendar. It was originated in 1954 by the late Ernest C. Gray, a retired executive of Hawaiian Dredging & Construction Co. (HD&C), who introduced the idea of having a graphic reference for local tide levels to aid the tugboat captains and fishermen in Hawaii.

The first edition required two men and one and a half months to develop the tide chart from information taken from the U.S. Coast & Geodetic Survey Tide Tables. Today it takes about three hours by computer for an accurate reading of the tides from data cards provided by the National Oceanic & Atmospheric

COVER HONAUNAU, HAWAII

Large wooden images face the setting sun and the sea at the Hale-O-Keawe, City of Refuge. Long ago these figures served as guardians, their fierce expressions and often elaborate headdresses designed to invoke awe and fear of this sacred place. The carvings were granted respect as both symbolic and tangible evidence of the spiritual powers that determined much of man's fate.



JANUARY HANALEI BEACH, KAUAI



The winter sun sets to the sound of gently breaking surf and wind gusting through groves of ironwood and palm. Famed Hanalei's curving beach softens the coastline that soon surrenders to the isolation of the Na Pali coast as a solitary runner skirts the edge of the incoming tide.

JULY KA'AHA POINT, HAWAII



Sails set to catch a midsummer breeze, the sun lures a catamaran out to sea. Ancient navigators moved about the vast reaches of the Pacific, following the paths of the stars and the sun, interpreting the ocean swells, wave patterns, cloud formations and the presence of sea birds to reach their destination.

FEBRUARY WAIKIKI, OAHU



What better time for sharing than when the vibrant greens and blues of day yields to the sun's flaming descent into the sea. This transitory time between day and night provides moments of reflection for the Waikiki visitor and island resident, alike.

AUGUST BARKING SANDS, KAUAI



The sea remained a living force in Hawaiian tradition — its gods alternately prayed to and thanked for the rich harvests it provided. For today's surfers, snorkelers and fishermen, the ocean continues as a source for food, pleasure and revitalizing the human spirit.

MARCH LAUPAHOEHOE



SEPTEMBER KAPIKAIHUA



The first printing was a simple reproduction of the chart with the HD&C logo as the only illustration. The calendar has since developed into an attractive and educational publication that displays the talent of local artists and photographers in addition to providing quick reference for fishermen, surfers, school children and other maritime participants.

The initial order of 1,500 copies has grown to 60,000 to meet the public demand today. And continuing the tradition that began 25 years ago, Dillingham distributes the calendars free of charge as a community service to residents of Hawaii who request it. Distribution is still handled through mailing labels, on a first-come, first-served basis.

We are pleased to have provided a useful publication that is sought-after and appreciated by so many people. We hope to continue this tradition in the years to come.



About the Photographer

ALLAN SEIDEN

Allan Seiden is a writer, photographer, historian and traveler now settled in Hawaii for close to six years. A native New Yorker, Seiden's work has appeared in numerous national and local publications. He has had exhibits in both Honolulu and New York, and has developed a style that aims at "capturing the timeless in either overview or detail." Rich color and careful composition with an eye to simplicity and drama are fundamental ingredients of his work.

Seiden has explored extensively with his camera and pen, most recently documenting Glacier Bay, Alaska by kayak and New Guinea's Sepik River by river truck. With Hawaii as a base, he has traveled through the South Pacific and East Asia in his capacity as feature correspondent for Travel Agent Magazine. He is represented nationally and internationally by the Image Bank. Please address all inquiries to Allan Seiden, Suite 505, 307 Lewers Street, Honolulu, Hawaii 96815.

LEATRICE H. HIGA
Production Coordinator
ALEC BAIRD
Designer

Copyright 1979, Dillingham Corporation

A powerful wave crashes on a jagged lava shore, a memory of giant seas that swept in from the east one day in 1946 destroying the coastal village of Laupahoehoe. Island fishermen have long since returned to share the bounty of this foaming, dusk-hued shore.



APRIL
DIAMOND HEAD
BEACH,
OAHU

Only minutes from the crowds of Waikiki, a solitary boat sails on mercury waters while high tide laps at the shore. Overhead, gathering rainclouds and a heavy stillness in the air announce the power of an imminent storm.



MAY
QUEEN'S SURF,
OAHU

Motherhood's loving attention assuringly graces our childhood years as certainly as the sea provides the lifeblood of the islands. Here, as the day draws to an end, a mother sits with her daughter, giving the love that provides comfort and guidance for a lifetime of challenges and explorations.



JUNE
WAIMEA BAY,
OAHU

Summer's promise lives in the freedom we allow it to give us. A young diver begins a timeless leap from familiar rocks and soars over the calm waters of beautiful Waimea Bay on Oahu's North Shore.

With a backdrop of surging volcanic mountains and a restless, unpredictable sea, Hawaii's people long ago learned to live in harmony with nature. The constant push and pull between man and his environment is as old as human habitation of the islands — seen here as fishermen follow the receding tide to probe the sea for its offerings.



OCTOBER
KEAUHOU-KONA,
HAWAII

Reminiscent of times now twelve centuries past when Polynesians sailed from islands deep within the South Pacific, a catamaran makes its way along the Kona Coast. Ranging the open seas, the Polynesians had carried with them all the necessities of life and established their first settlements on the Big Island.



NOVEMBER
LAHAINA,
MAUI

Steady winds provide the power for a wind surfer to ride a golden sunset on the Lahaina Roads Channel. This channel was a much sought-after haven from rough coastal seas by thousands of whaling ships during the nineteenth century.

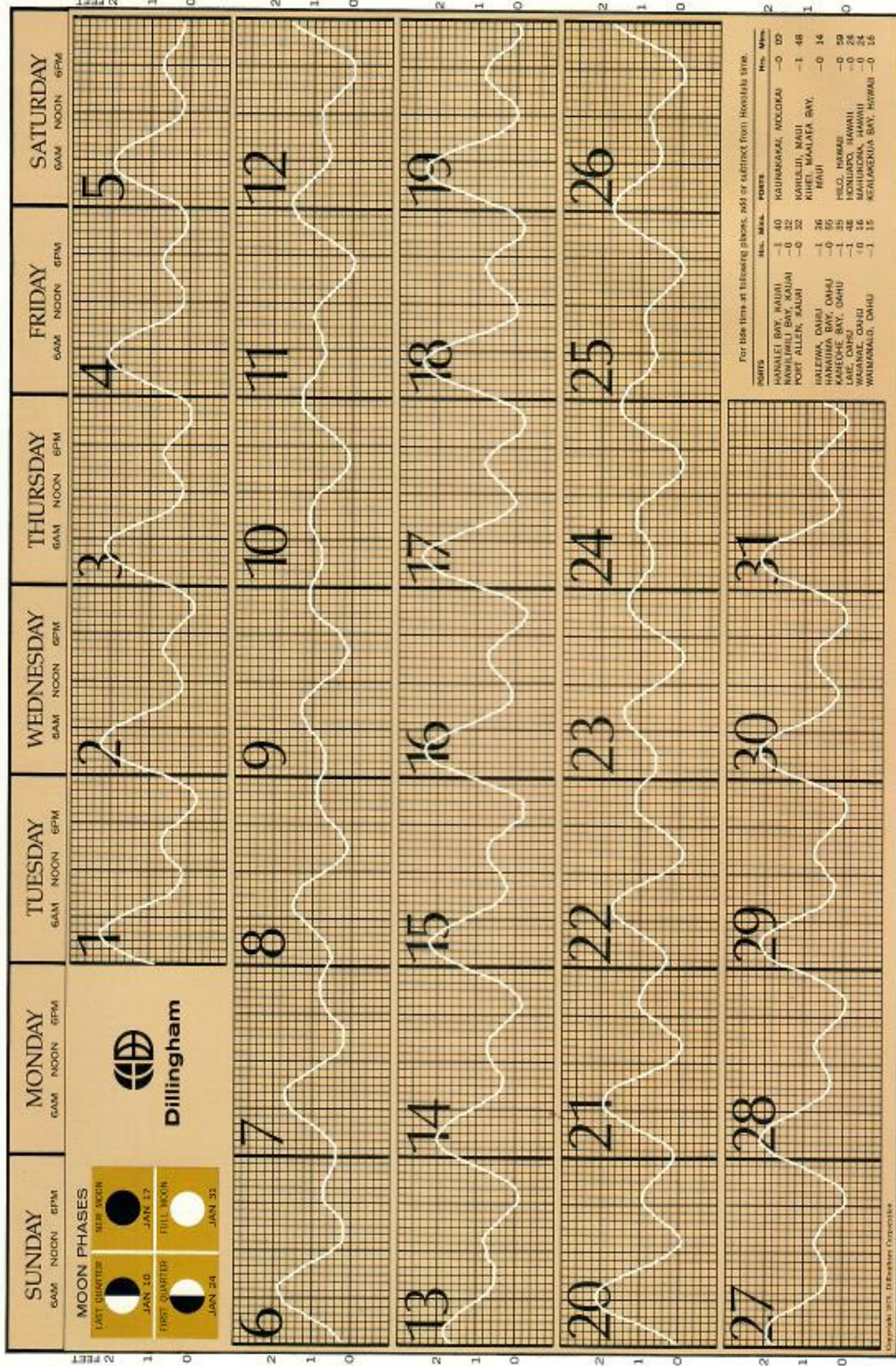


DECEMBER
KAPALUA BEACH,
MAUI

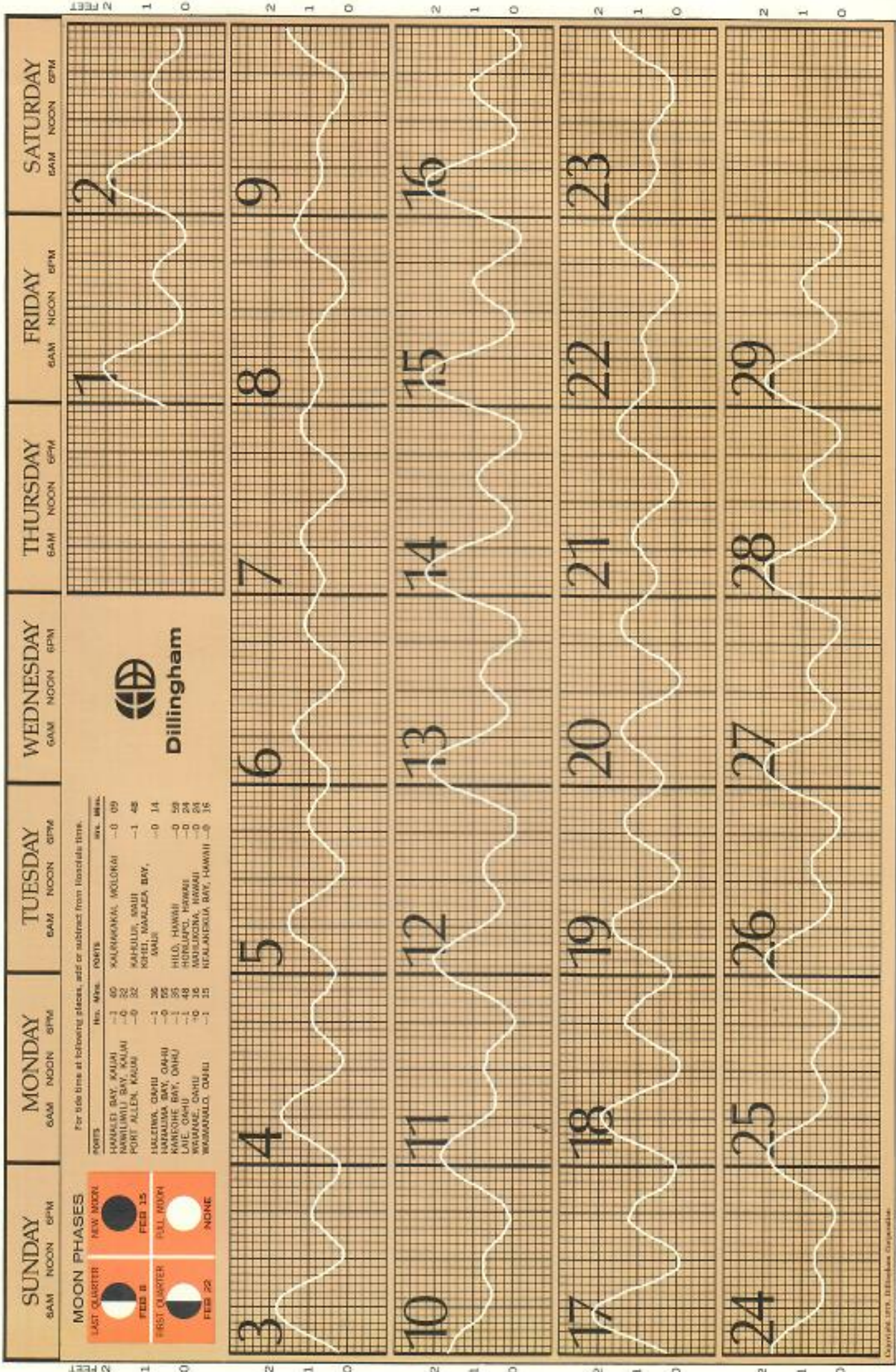
From West Maui, the island of Molokai rises in silhouette as the shortening days of winter move toward the close of the first year of the new decade. A moment to contemplate and explore the possibilities for new beginnings that are the inherent virtue of the New Year.



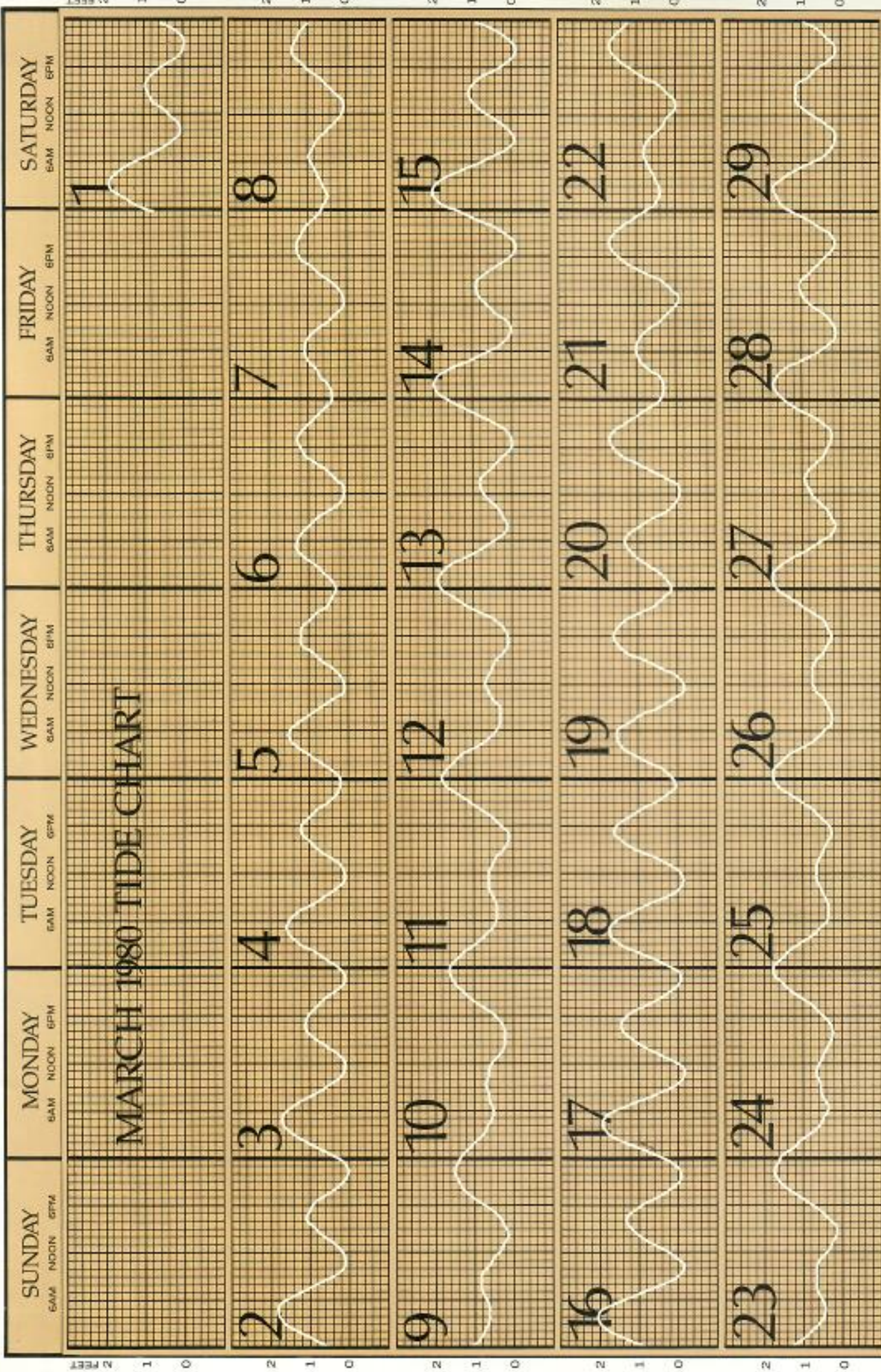
JANUARY 1980 TIDE CHART



FEBRUARY 1980 TIDE CHART







For tide time at following places, add or subtract from Honolulu time.

| POINTS | Hrs. | Mins. | POINTS | Hrs. | Mins. |
|----------------------|------|-------|---------------------|------|-------|
| HAWAII BAY, KAUAI | -1 | 40 | KAUNAKAKAI, MOLOKAI | -0 | 00 |
| MAUI WAILI BAY, MAUI | -0 | 32 | KAHULUI, MAUI | -1 | 48 |
| PORT ALLEN, OAHU | -0 | 32 | KIHEI, MAUI | -1 | 48 |
| HOLEWA, OAHU | -1 | 36 | MAUI | -0 | 14 |
| HANALEI BAY, OAHU | -0 | 25 | HILO, HAWAII | -0 | 29 |
| KANEHE BAY, OAHU | -1 | 25 | HONOLULU, HAWAII | -0 | 00 |
| LAIE, OAHU | -1 | 45 | MAHUKONA, HAWAII | -0 | 24 |
| WAIKANAE, OAHU | -1 | 15 | WAIKONA, HAWAII | -0 | 24 |
| WAIKANAE, OAHU | -1 | 15 | WAIKONA, HAWAII | -0 | 24 |

MOON PHASES

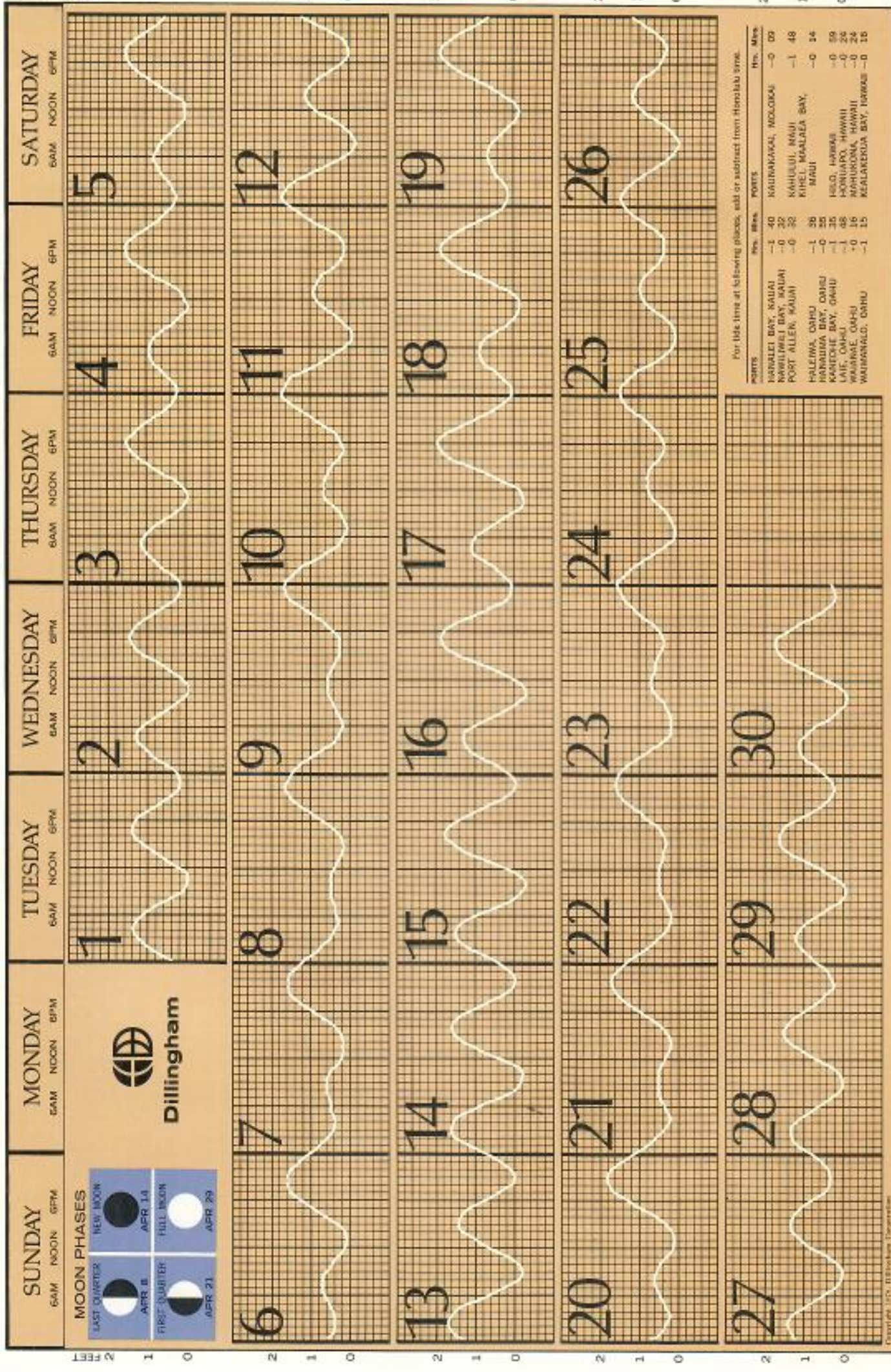
| MOON PHASE | DATE |
|---------------|------------|
| FULL MOON | MAR 3 & 21 |
| LAST QUARTER | MAR 9 |
| FIRST QUARTER | MAR 16 |
| NEW MOON | MAR 23 |



Dillingham

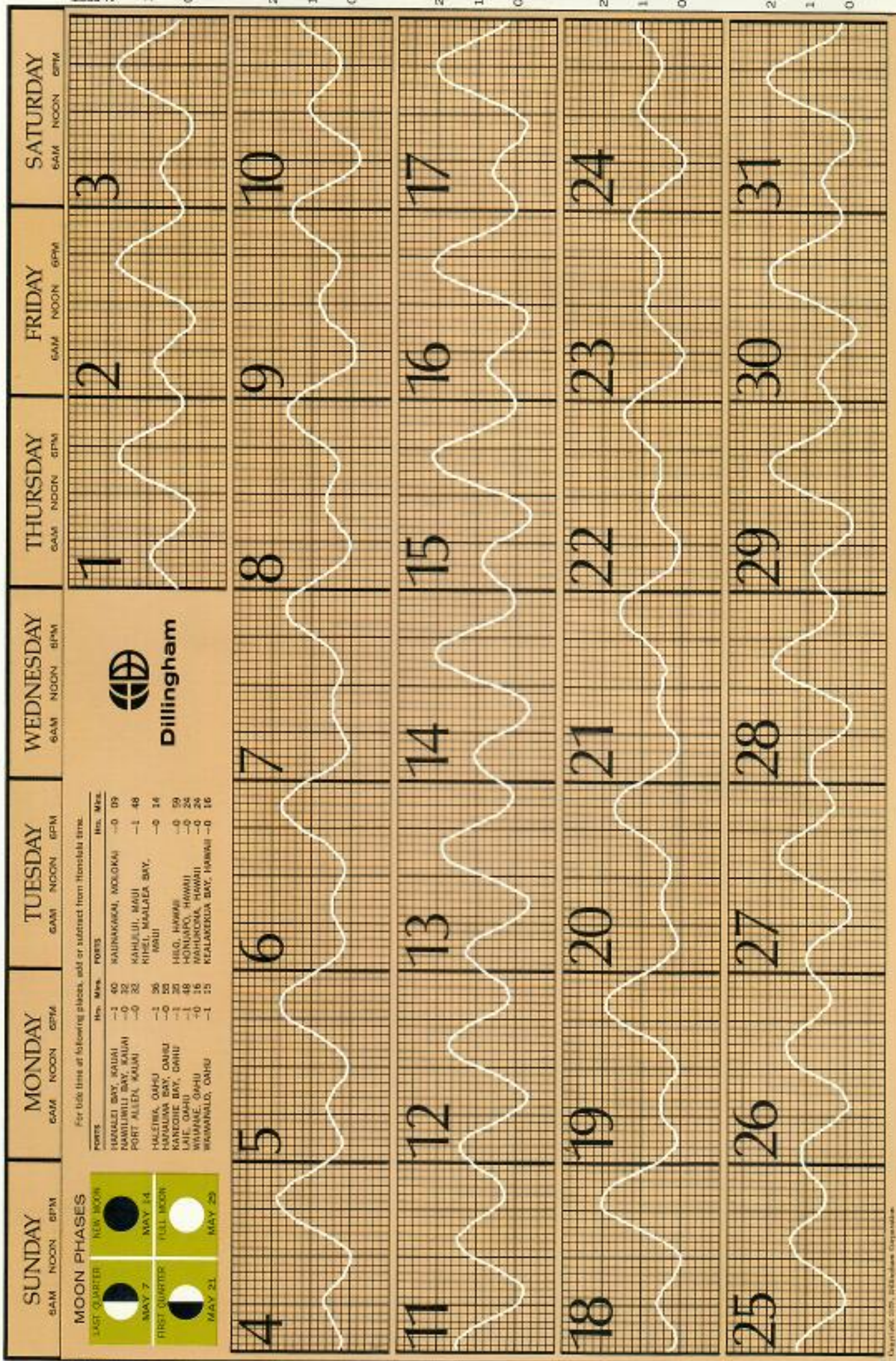


APRIL 1980 TIDE CHART



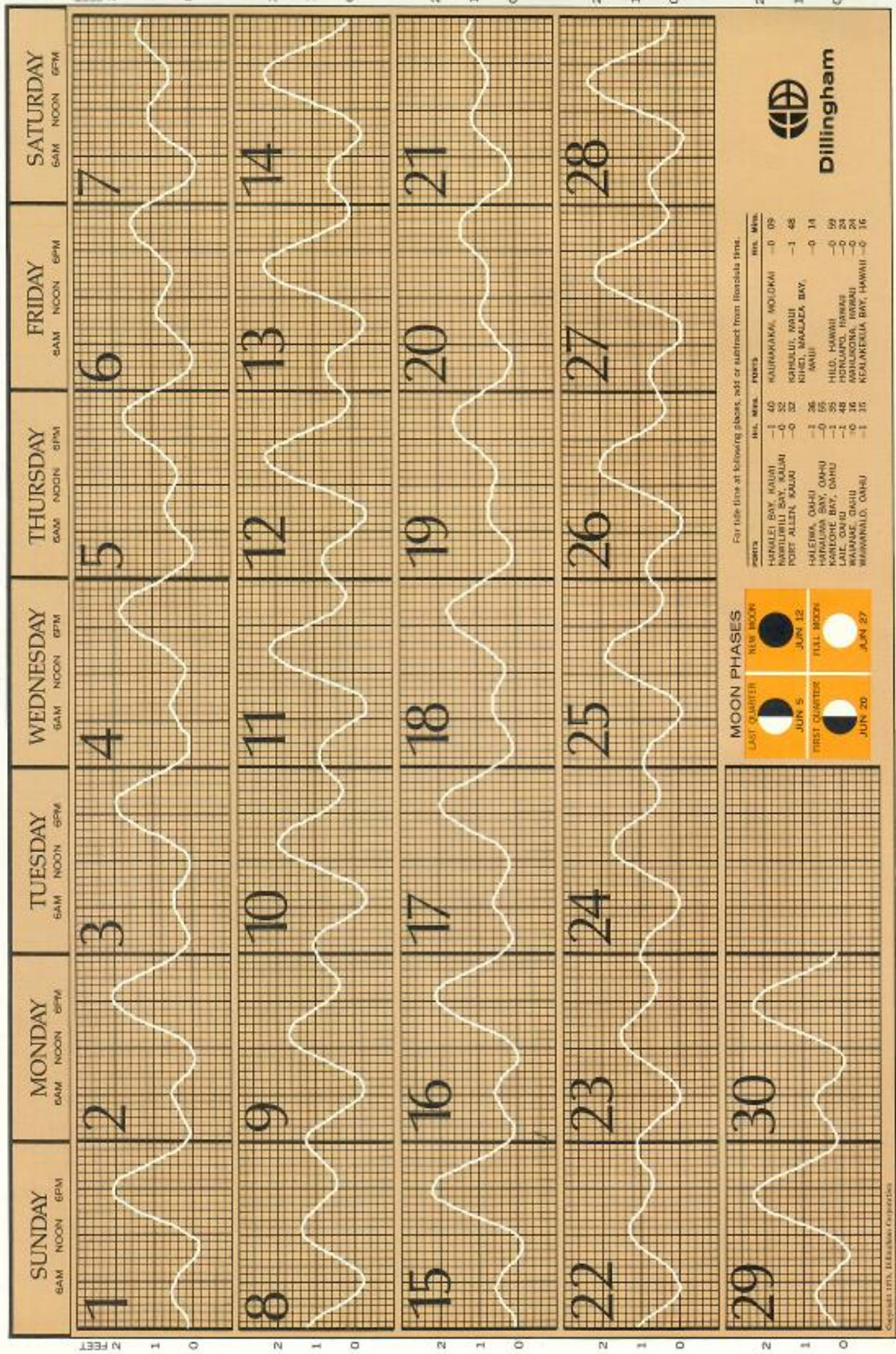


MAY 1980 TIDE CHART



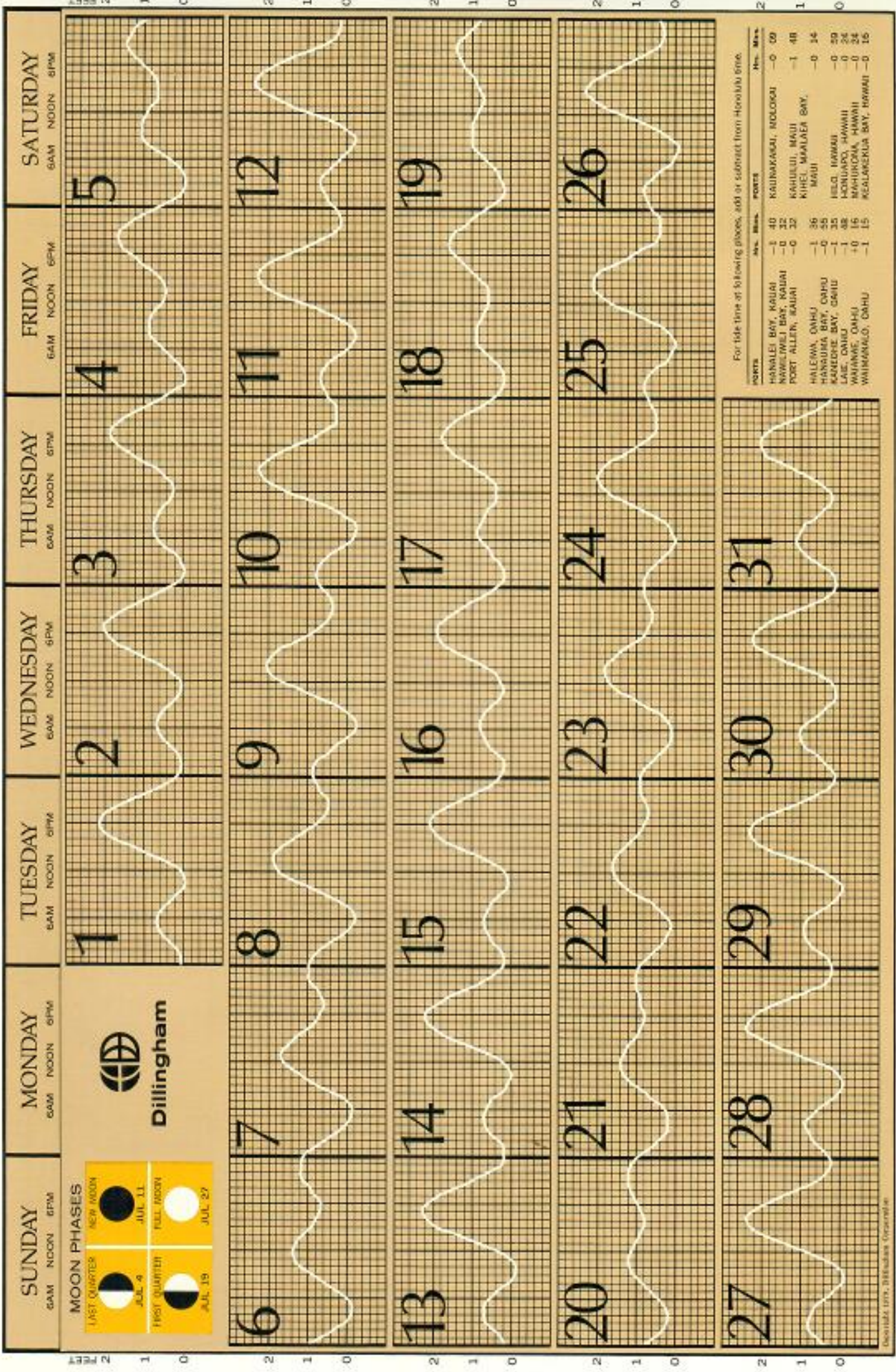


JUNE 1980 TIDE CHART

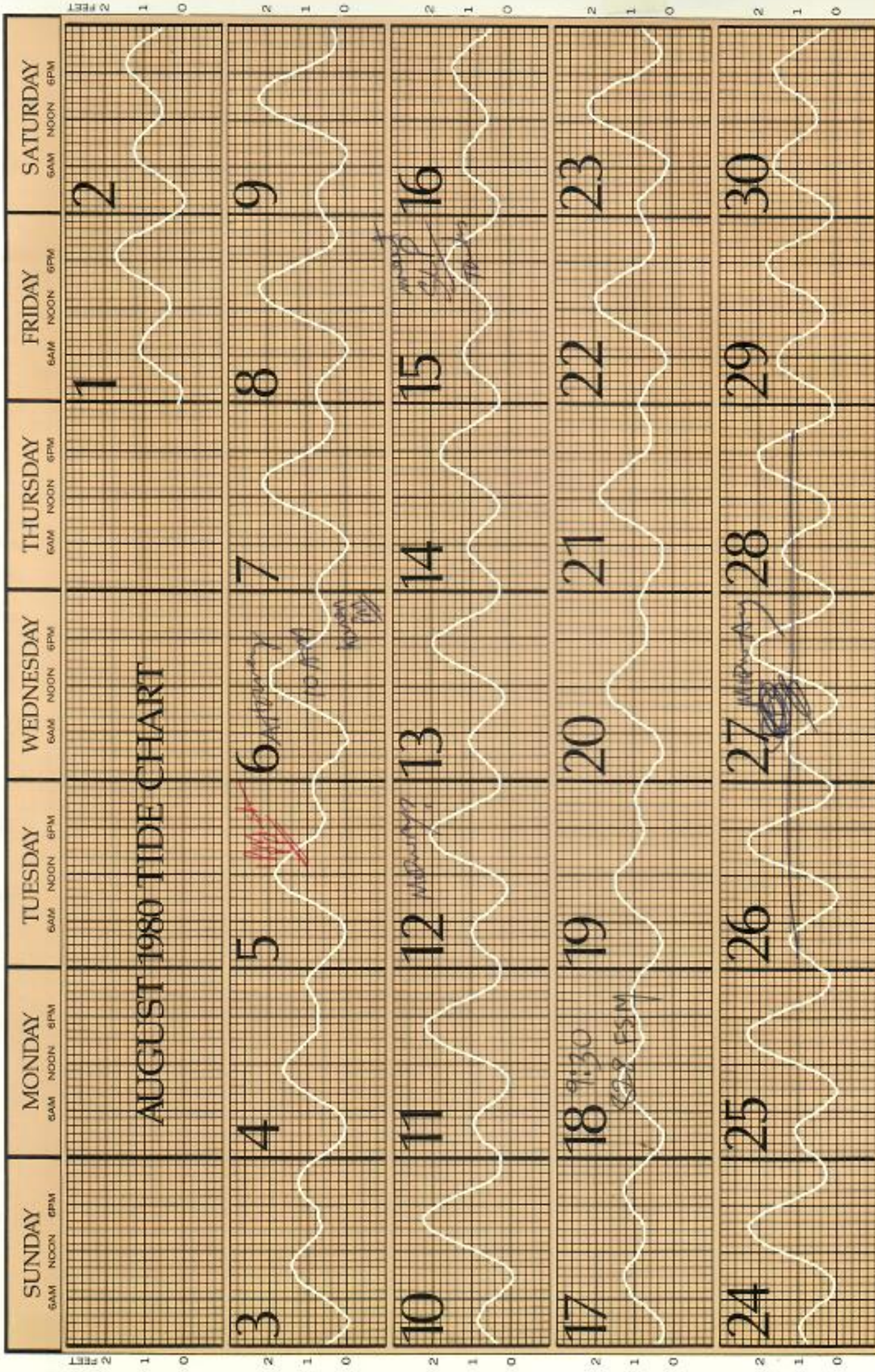




JULY 1980 TIDE CHART







For tide time at following places, add or subtract from Honolulu time.

| PORTS | Hrs. Min. | PORTS | Hrs. Min. |
|--------------------|-----------|----------------------|-----------|
| HAWAII BAY, HAWAII | -1 40 | KAIHARAWA, MOLOKAI | -0 09 |
| KAWAII BAY, KAUAI | -0 32 | KAHULUI, MAUI | -1 48 |
| PORT ALLEN, KAUAI | -0 52 | KIHEI, MAUI | -0 14 |
| | | MAUI | -0 09 |
| | | HONOLOULU, HAWAII | -0 24 |
| | | KAHUKOHA, HAWAII | -0 24 |
| | | KAHUKOHA BAY, HAWAII | -0 26 |
| | | KAHUKOHA BAY, HAWAII | -0 26 |

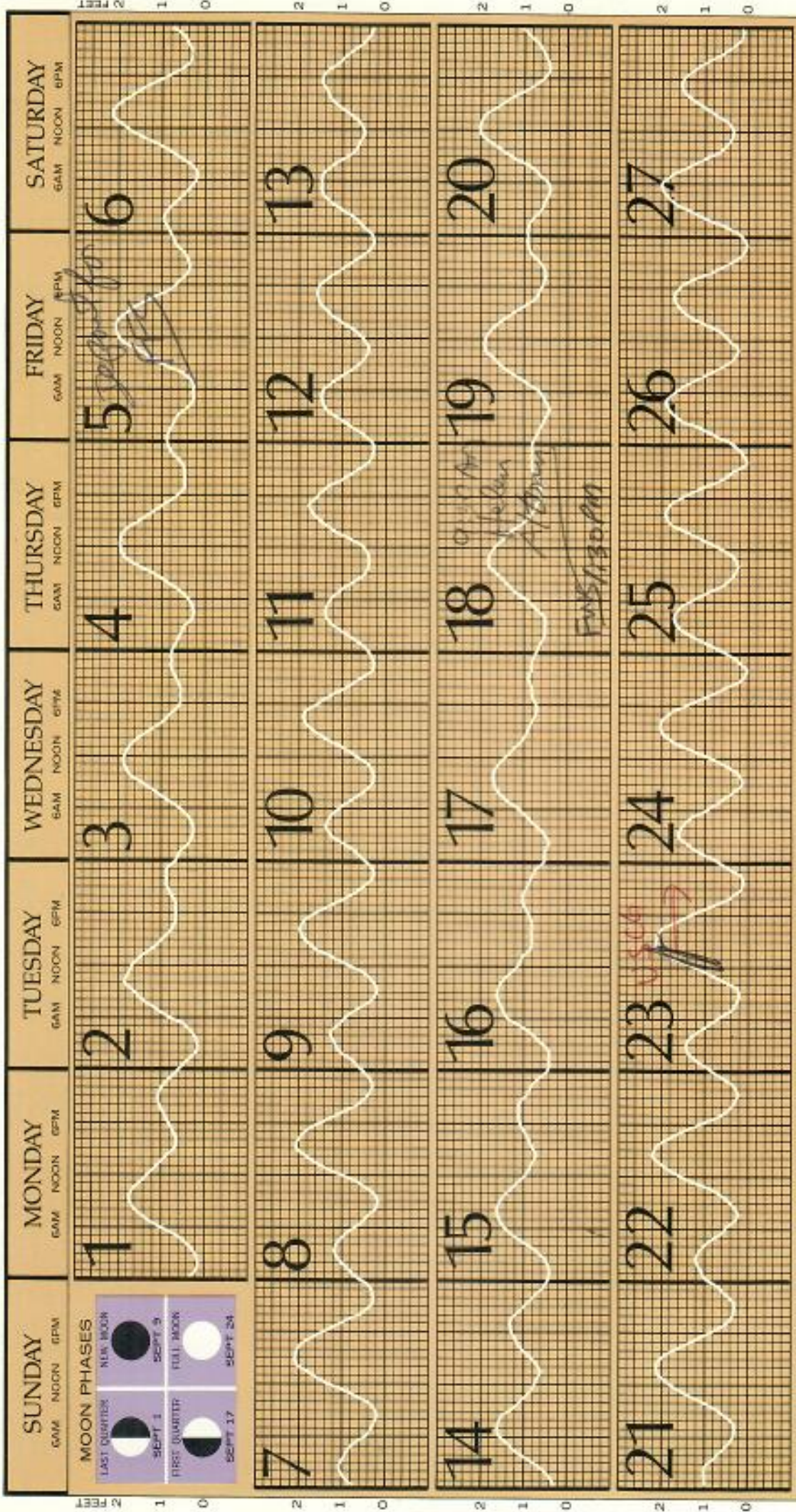
MOON PHASES

| | |
|--------------------------|----------------------|
| LAST QUARTER AUG. 3 | NEW MOON AUG. 10 |
| FIRST QUARTER AUG. 18 | FULL MOON AUG. 25 |





SEPTEMBER 1980 TIDE CHART



For tide time at following places, add or subtract from Honolulu time.

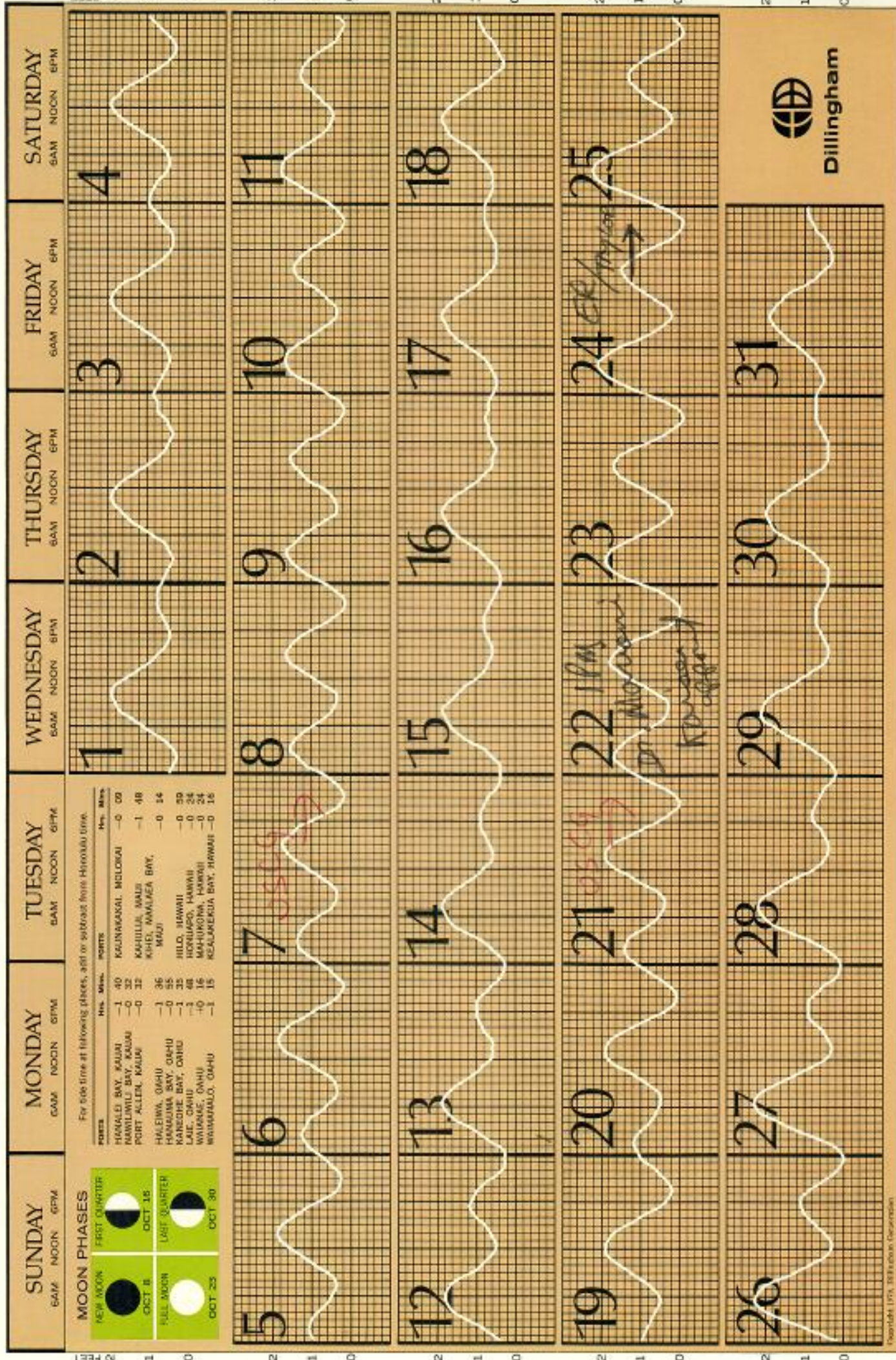
| PLACES | Hrs. Mins. | POINTS | Hrs. Mins. |
|---------------------|------------|----------------------|------------|
| HONOLULU BAY, KAUAI | -1 40 | KAUAIKANAL, HAWAII | -0 00 |
| MAUNALOA BAY, KAUAI | -0 35 | KAHULUI, MAUI | -1 48 |
| PORT ALLEN, MAUI | -0 32 | KAPILI, MAUI | -0 14 |
| HALEIWA, OAHU | -1 38 | HILO, HAWAII | -0 09 |
| HONOLULU BAY, OAHU | -1 35 | HONOLULU, HAWAII | -0 00 |
| LAIE, OAHU | -1 48 | MAHUKONA, HAWAII | -0 34 |
| WAIANAE, OAHU | -0 18 | MAHUKONA BAY, HAWAII | -0 36 |
| WAIMANALO, OAHU | -1 15 | MAHUKONA BAY, HAWAII | -0 36 |



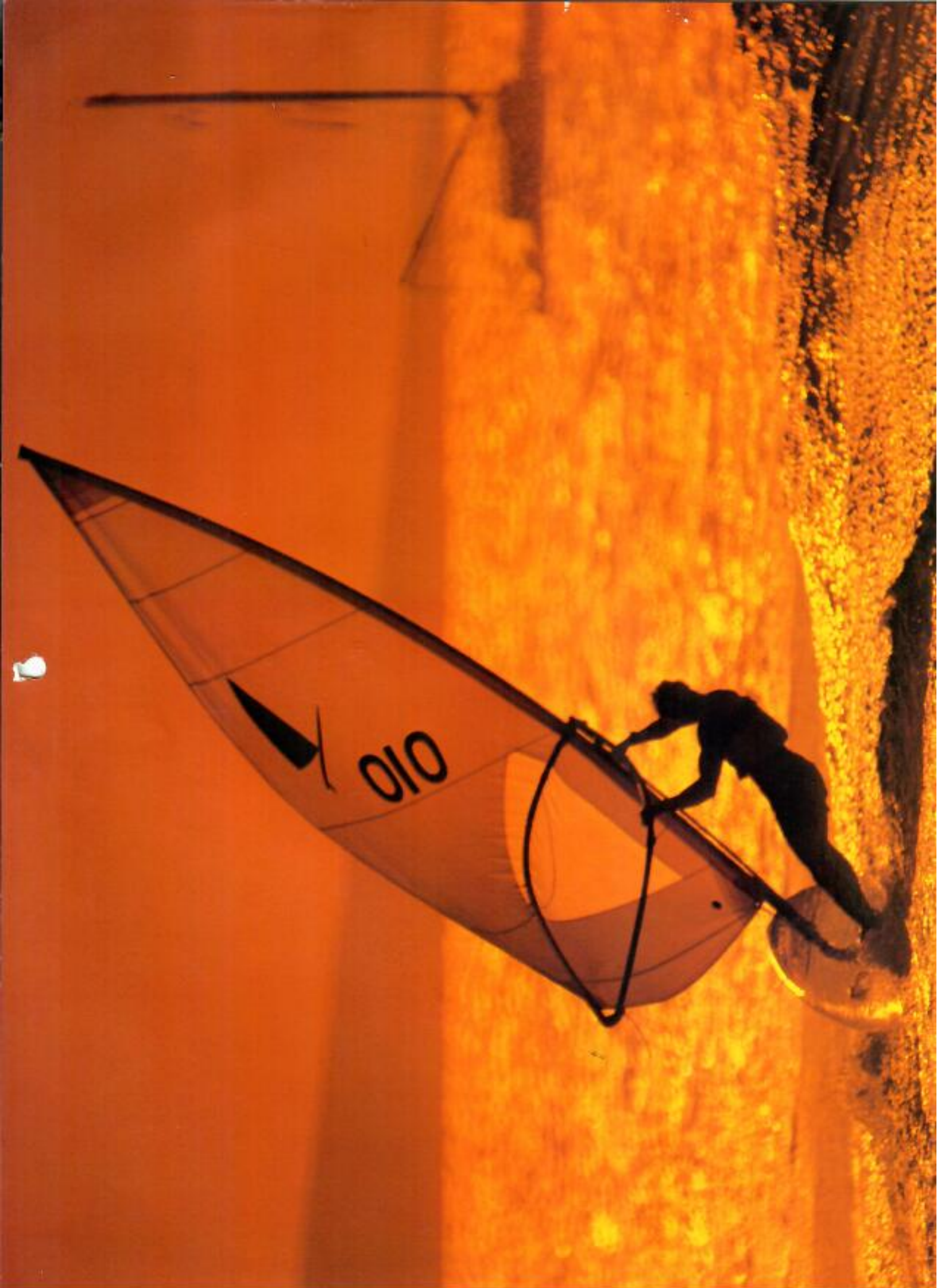
Dillingham

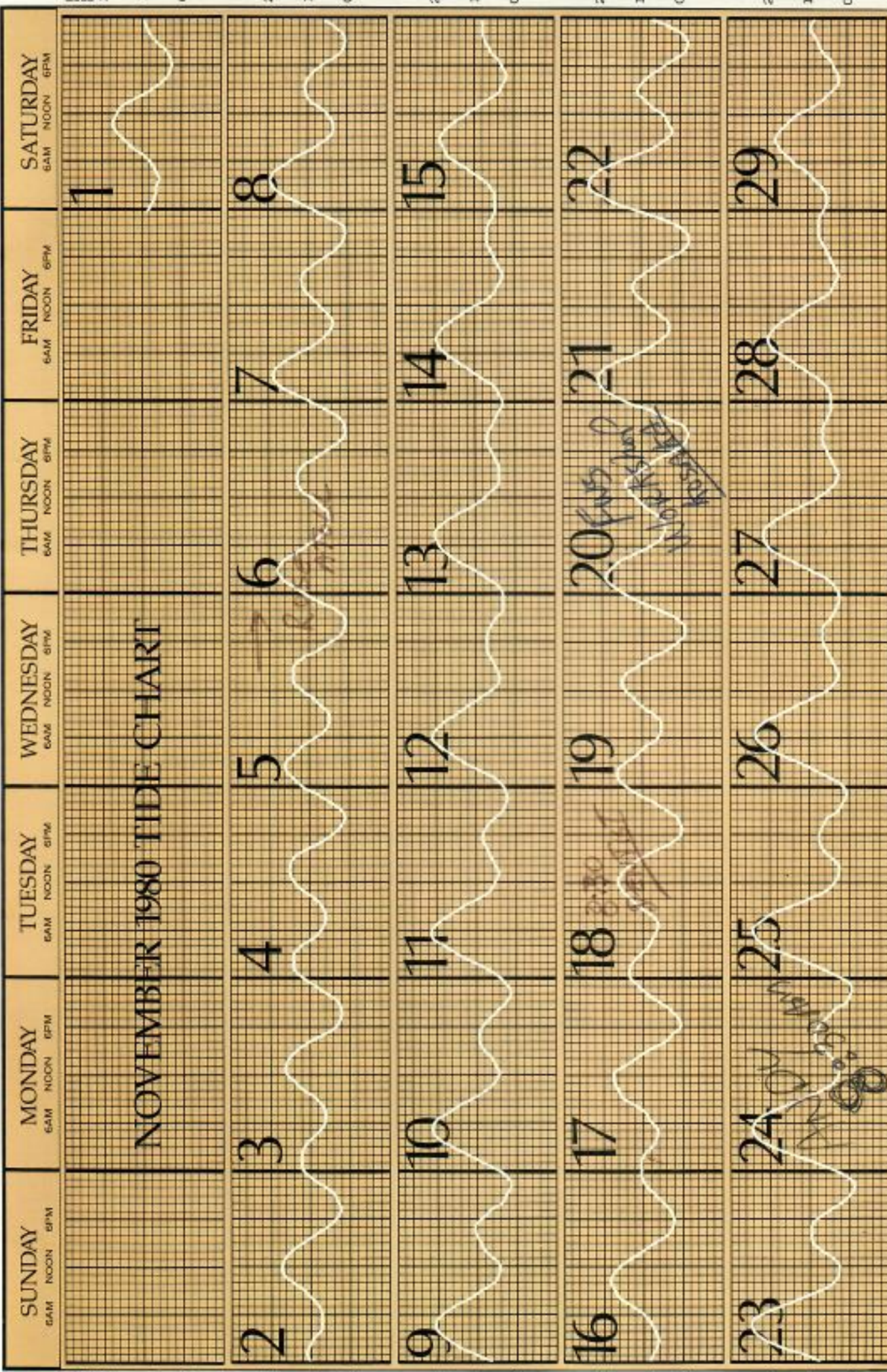


OCTOBER 1980 TIDE CHART



Dillingham





MOON PHASES

| | |
|----------------------|--------------------------|
| NEW MOON NOV. 7 | FIRST QUARTER NOV. 15 |
| FULL MOON NOV. 21 | LAST QUARTER NOV. 29 |

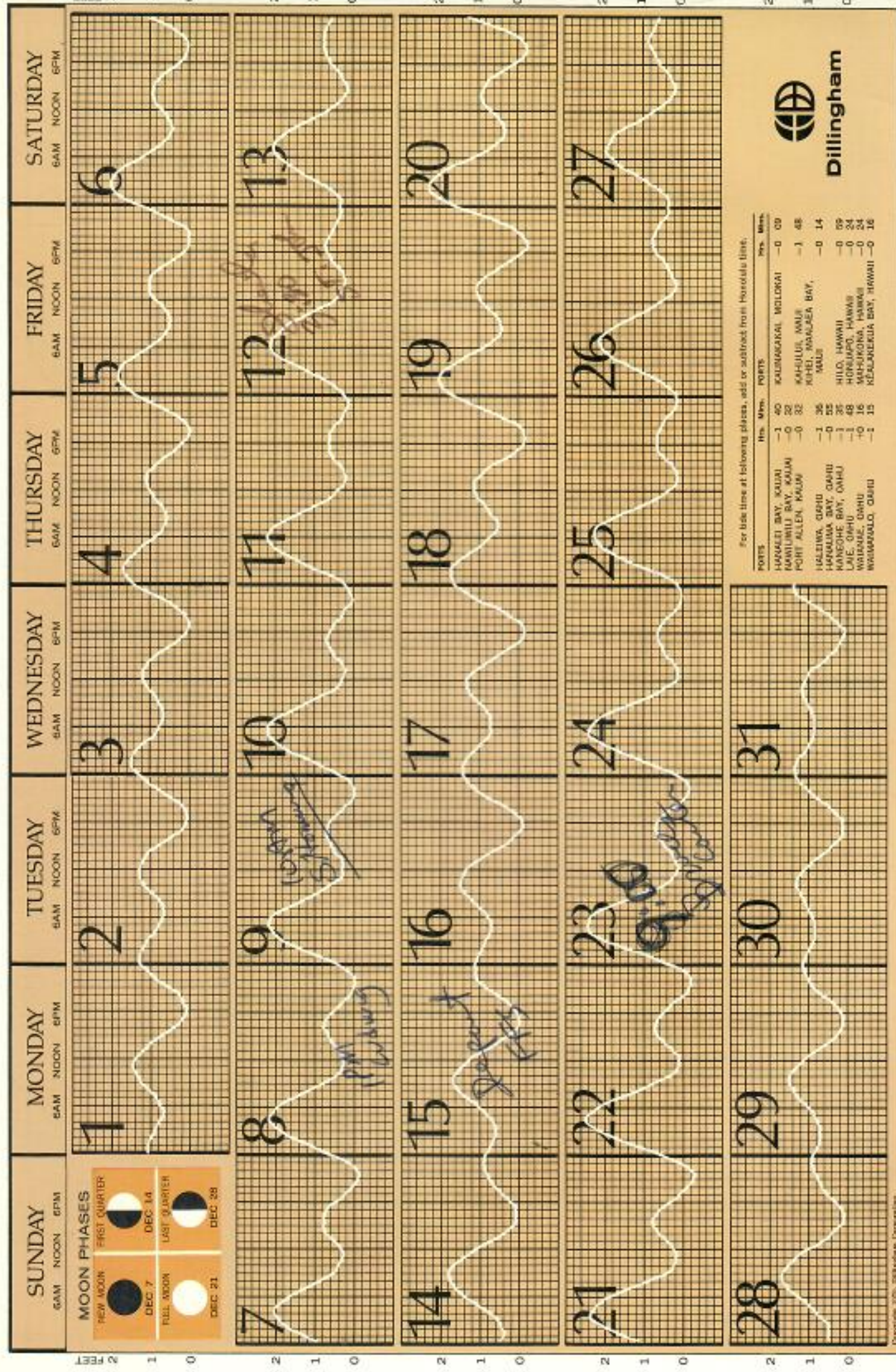
For tide time at following places, add or subtract from Honolulu time.

| PORTS | HIG. TIME | LOW. TIME |
|------------------------|-----------|-----------|
| HAWAII BAY, HAWAII | -1 50 | 00 00 |
| MAUI BAY, MAUI | -0 32 | 00 32 |
| KAHOOLAWE BAY, MAUI | -0 32 | 00 32 |
| POINT ALLEN, MAUI | -0 32 | 00 32 |
| HALEIWA, OAHU | -1 36 | 00 36 |
| HANALEI BAY, OAHU | -0 55 | 00 55 |
| KANEOHE BAY, OAHU | -1 35 | 00 35 |
| LAIE, OAHU | -1 48 | 00 48 |
| WAIKANE, OAHU | 00 16 | 00 16 |
| WAILUKU, OAHU | 00 15 | 00 15 |
| KAUNAKAI, MOLOKAI | -0 09 | 00 09 |
| KAHOOLAWE BAY, MOLOKAI | -1 48 | 00 48 |
| KOHO, MAUI | -0 14 | 00 14 |
| KAHOOLAWE BAY, MAUI | -0 59 | 00 59 |
| HONOLULU, HAWAII | -0 24 | 00 24 |
| WAILUKU, HAWAII | -0 24 | 00 24 |
| WAILUKU BAY, HAWAII | -0 24 | 00 24 |





DECEMBER 1980 TIDE CHART



1980

TIDE CALENDAR



1955 • 25th ANNIVERSARY • 1980



Dillingham