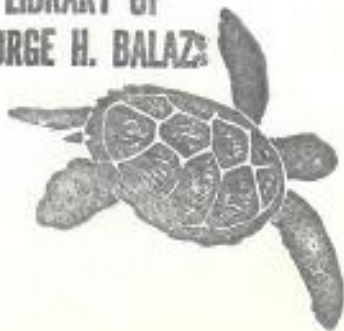
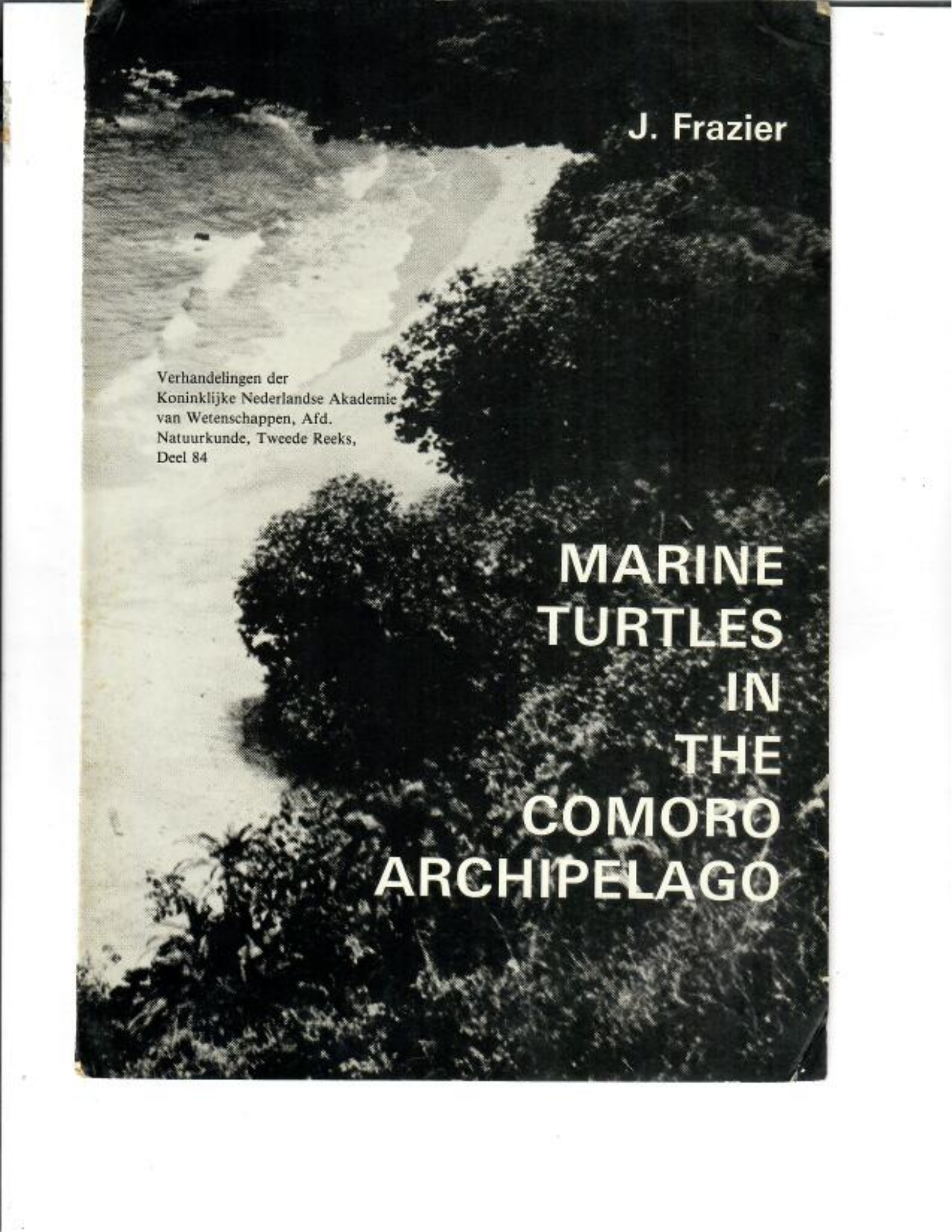

MARINE TURTLES IN THE COMORO ARCHIPELAGO

LIBRARY OF
GEORGE H. BALAZS



A black and white photograph of a tropical coastline. The foreground is dominated by dense, dark foliage, likely palm trees and other tropical plants. In the middle ground, a sandy beach curves along the edge of the water. The water is calm, reflecting the sky. The overall scene is serene and naturalistic.

J. Frazier

Verhandelingen der
Koninklijke Nederlandse Akademie
van Wetenschappen, Afd.
Natuurkunde, Tweede Reeks,
Deel 84

**MARINE
TURTLES
IN
THE
COMORO
ARCHIPELAGO**

PLATES

Plate Captions

- Plate I Fig 1 Chindini beach (N° 2) at the south end of Grande Comore, looking southwest, 12 January 1972; showing supralittoral platform of recent lava in foreground and sand beach on the southwest side of the bay (centre).
 Fig 2 Booni crater, about 8 km south of Mitsamiouli, on the northwest of Grande Comore, looking south, 25 May 1973; showing stark coastal features with recent volcanic rock.
- Plate II Fig 1 Coastal cliffs north of N'Gouni crater, about 2 km southwest of Moroni, on the west of Grande Comore, looking south, 10 January 1972; showing 2 to 3 m cliffs of recent lava.
 Fig 2 Iconi village, about 4 km south of Moroni, on the west coast of Grande Comore, looking south from the top of N'Gouni crater, 10 January 1972; showing coast dominated by recent lava, with small perched beaches, and village and paved road crowding the coast.
- Plate III Fig 1 M'Sanga Nyamba beach (N° 8), northwest coast of Mohéli, looking north from cliffs above the beach, 24 February 1972; showing dense strand and forest vegetation on the beach platform and turtle tracks on the beach.
 Fig 2 M'Sanga Nyamba beach (N° 8), northwest coast of Mohéli, looking northwest from the southern end of the beach, 24 February 1972; showing dense strand vegetation (especially *Hibiscus tiliaceus*) crowding the beach crest and turtle tracks on the beach.
- Plate IV Fig 1 M'Samouheo beach (N° 12), northwest coast of Mohéli, looking northwest from cliffs above the beach, 24 February 1972; showing dense strand and forest vegetation on the beach platform.
 Fig 2 M'Samouheo beach (N° 12), northwest coast of Mohéli, looking south from the northern end of the beach, 24 February 1972; showing small grove of coconuts, dense strand vegetation (especially *Hibiscus tiliaceus* with *Ipomoea pes-caprae* below it) crowding the beach crest, and turtle tracks.
- Plate V Fig 1 Chissioua Ouénéfou beach (N° 45), west side of Mohéli, looking south, 1 April 1972; showing narrow beach crowded by cliffs and dense strand vegetation; the main nesting area is left of centre, and most of the sand is in the intertidal zone.
 Fig 2 Chissioua Ouénéfou beach (N° 47), northeast side of Mohéli, looking north from cliffs above the beach, 10 Juni 1973; showing beach crest crowded by dense strand and forest vegetation.

- Plate VI Fig 1 M'Sanga Nyamba beach (N° 67), southeast coast of Mohéli, from the south end of the beach looking north, 3 March 1972; showing long but narrow beach with dense strand and forest vegetation on the beach platform.
- Fig 2 Chigoni Bay, west side of Mayotte, 15 June 1973; showing gentle and densely vegetated slopes.
- Plate VII Fig 1 Moya South beach (N° 127), west side of Pamanzi Island, Mayotte, looking south, 18 June 1973; showing 'C'-shaped beach with dense strand (especially *Colubrina asiatica*) and forest vegetation on the beach platform, main nesting area is in the centre of the beach, at the right.
- Fig 2 Moya South beach (N° 127), west side of Pamanzi Island, Mayotte, looking inland at the centre of the beach, 18 June 1973; showing dense strand vegetation (especially *Colubrina asiatica* and *Hibiscus tiliaceus*) on beach platform; the remains (shell and flippers) of slaughtered turtles are in front of the bushes.
- Plate VIII Fig 1 Dorsal aspect of immature *Chelonia mydas* JFCm 785, 23 March 1972, Fomboni, Mohéli; showing predominance of chestnut-red colour and dark pigment distributed mainly in rays.
- Fig 2 Dorsal aspect of the head of immature *Chelonia mydas* JFCm 785, 23 March 1972, Fomboni, Mohéli; showing predominance of chestnut-red colour.
- Plate IX Fig 1 Nesting female *Chelonia mydas* JFCm 710, M'Samouheo beach (N° 12), Mohéli, 10 March 1972; showing conspicuous chestnut-red 'bull's-eyes' with emanating rays.
- Fig 2 Nesting female *Chelonia mydas* JFCm 712, M'Samouheo beach (N° 12), Mohéli, 10 March 1972; showing conspicuous chestnut-red 'bull's-eyes' and dark pigment concentrated in rays.
- Plate X Fig 1 Nesting female *Chelonia mydas* JFCm 708, M'Samouheo beach (N° 12), Mohéli, 10 March 1972; showing concentrations of chestnut-red pigment in posterior-medial corners of pleural scutes.
- Fig 2 Nesting female *Chelonia mydas* JFCm 711, M'Samouheo beach (N° 12), Mohéli, 10 March 1972; showing concentrations of chestnut-red pigment with emanating rays.
- Plate XI Fig 1 Dead nesting female *Chelonia mydas* JFCm 794, M'Samouheo beach (N° 12), Mohéli, 10 March 1972; showing dark pigment dispersed in dark spots.
- Fig 2 Dead nesting female *Chelonia mydas* JFCm 795, M'Samouheo beach (N° 12), Mohéli, 10 March 1972; showing conspicuous chestnut-red 'bull's-eyes' with emanating dark rays, but colours less vivid than in live animals.
- Plate XII Fig 1 Dead female (?) *Chelonia mydas* JFCm 789, M'Sanga Nyamba beach (N° 67), Mohéli, 3 March 1972; showing concentrations of dark pigment in posterior-medial corners of pleural scutes, and bleached less vivid colours.
- Fig 2 Dead female (?) *Chelonia mydas* JFCm 790, M'Sanga Nyamba beach (N° 67), Mohéli, 3 March 1972; showing bleached less vivid colours.
- Plate XIII Fig 1 Nesting female *Chelonia mydas* JFCm 719, Moya South beach (N° 126), Mayotte, 9 June 1972; showing concentrations of chestnut-red pigment and emanating rays (photo by Dr. R. Von Hentig).
- Fig 2 Nesting female *Chelonia mydas* JFCm 720, Moya North beach (N° 127), Mayotte, 9 June 1972; showing large concentrations of chestnut-red pigment, and many light coloured circles on the posterior, probably old attachment sites of the barnacle *Chelonibia testudinaria* (photo by Dr. R. Von Hentig).

- Plate XIV Fig 1 Ventral aspect of nesting female *Chelonia mydas* JFCm 720, Moya North beach (N° 126), west side of Pamanzi Island, Mayotte, 9 June 1972; showing stumped left hind limb and asymmetric anal scutes of plastron (photo by Dr. R. von Hentig).
- Fig 2 Female *Chelonia mydas* JFCm 713, nesting on beach 45, west side of Chissioua Ouénéfou, Mohéli, 1 April 1972; showing covering of the nest by sweeping sand backwards; note deep body pit, tag at base of left front flipper and large copulation notch in the shell to the right of the tag.
- Plate XV Fig 1 Hatchling *Chelonia mydas* emerging from a nest on beach 45, west side of Chissioua Ouénéfou in late afternoon, 31 March 1972; showing covering behaviour in which the turtle flips sand onto its body.
- Fig 2 Hatchling *Chelonia mydas* emerged from a nest on beach 45, west side of Chissioua Ouénéfou in late afternoon, 31 March 1972; showing the body covered with sand and the turtle lifting its hind feet from the sand, reducing body contact with the substrate.
- Plate XVI Fig 1 Dorsal aspect of immature *Eretmochelys imbricata* JFEi 20, captured at Itsandra, west side of Grande Comore, 2 January 1972; showing keels on all but the most anterior pleurals and on all vertebrals.
- Fig 2 Ventral aspect of immature *Eretmochelys imbricata* JFEi 20, captured at Itsandra, west side of Grande Comore, 2 January 1972; showing moderately strong keels on each side of the plastron and black centres to many ventral scales.
- Plate XVII Fig 1 Dorsal aspect of the carapace of immature *Eretmochelys imbricata* JFEi 21, captured at Moihani, southeast side of Mohéli, 19 December 1972; showing keels on all but most anterior pleurals and vertebrals (the shell is varnished).
- Fig 2 Dorsal aspect of the head of immature *Eretmochelys imbricata* JFEi 20, captured at Itsandra, west side of Grande Comore, 2 January 1972; showing black scales outlined in yellow and an extra asymmetric prefrontal scale.
- Plate XVIII Fig 1 Female *Chelonia mydas* JFCm 713 nesting on beach 45, west side of Chissioua Ouénéfou, Mohéli, 1 April 1972; showing carapace scutes covered with scratches and copulation notch above right front flipper.
- Fig 2 Carapace of dead *Eretmochelys imbricata* (nesting female ?) on beach 127 Moya South, west side of Pamanzi Island, Mayotte, November 1972; showing heavy infestations of barnacles *Chelonibia testudinaria* and encrusting algae (photo by A. Biréles).

PLATE I

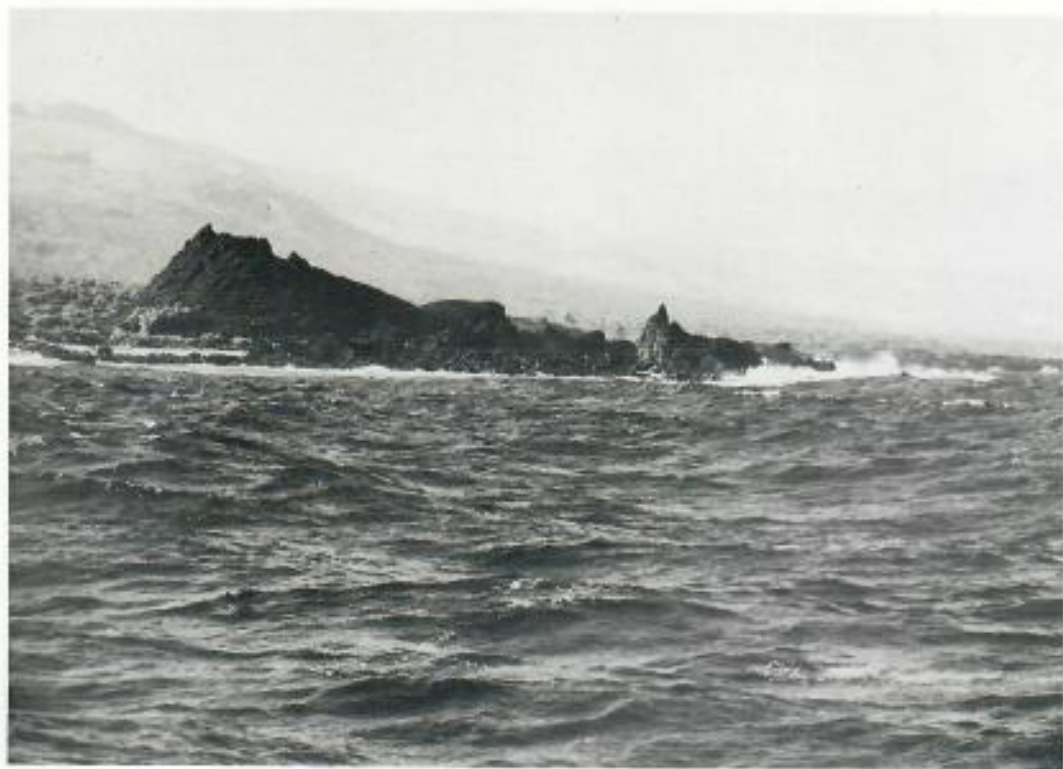


PLATE II



PLATE III



1



2

PLATE IV



1



2

PLATE V



1

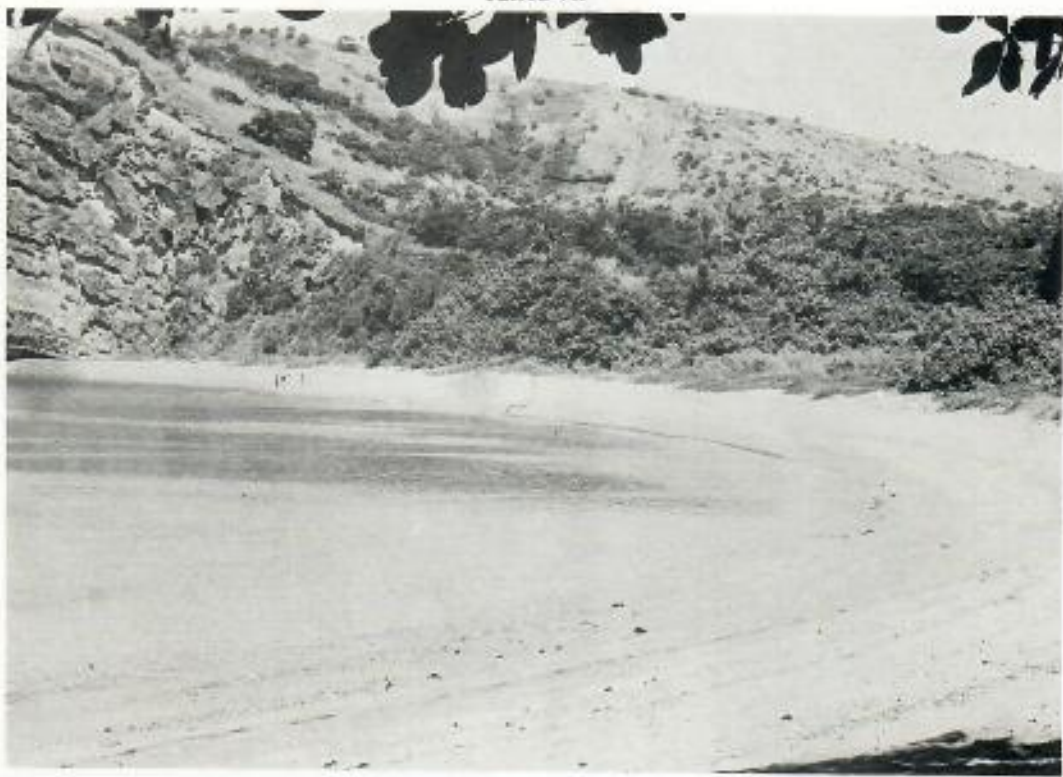


2

PLATE VI



PLATE VII



2

PLATE VIII



1



2

PLATE IX



PLATE X



1



2

PLATE XI



PLATE XII



2



1



2

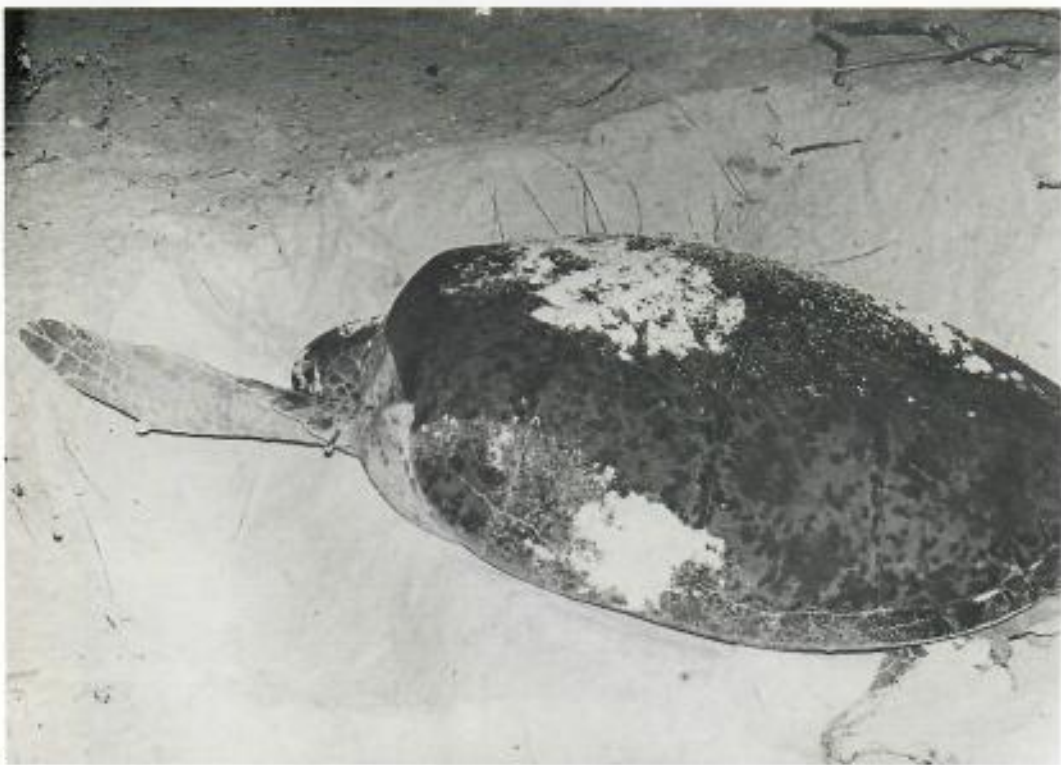
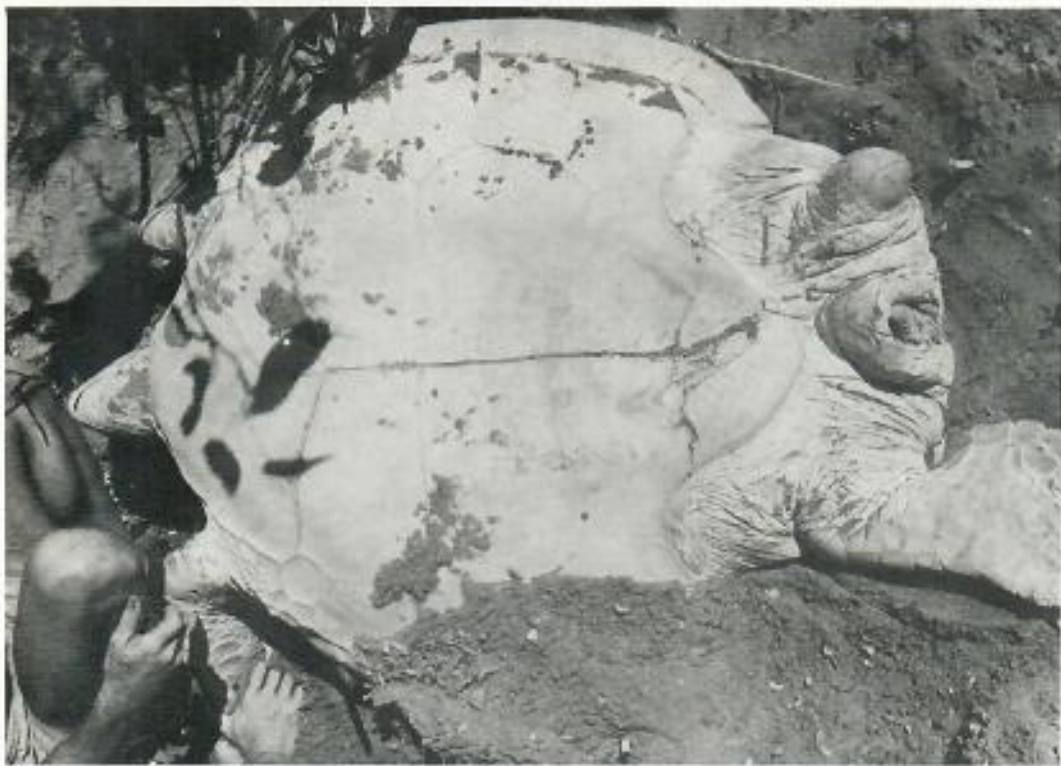




PLATE XVI

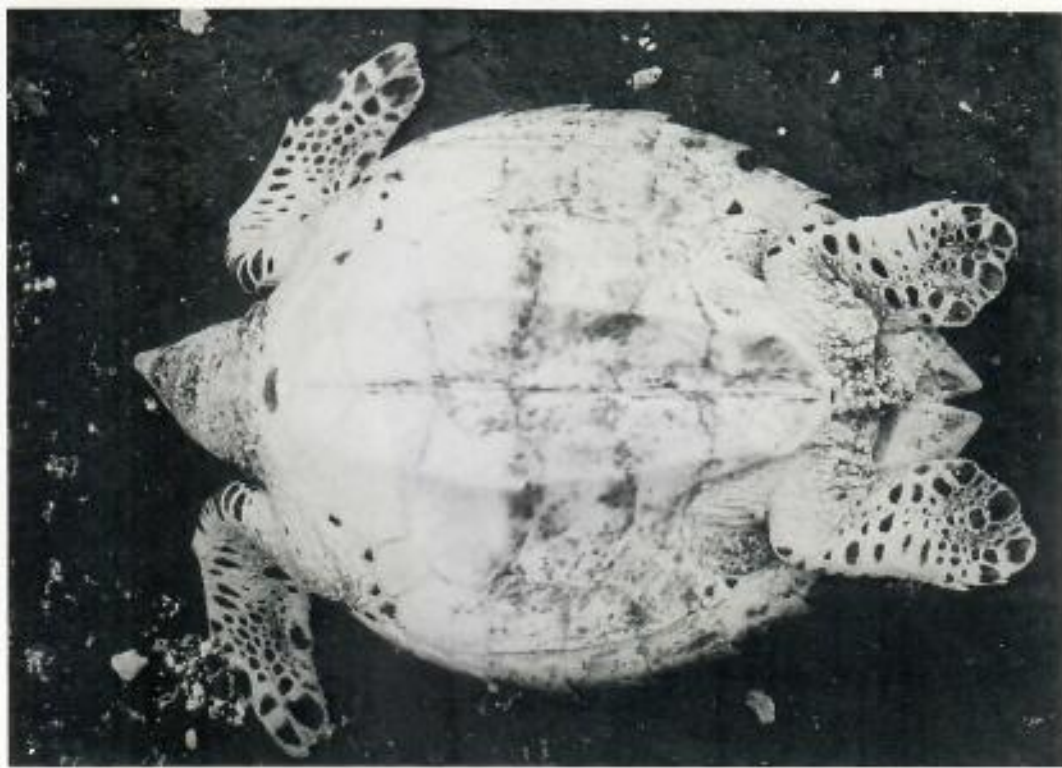
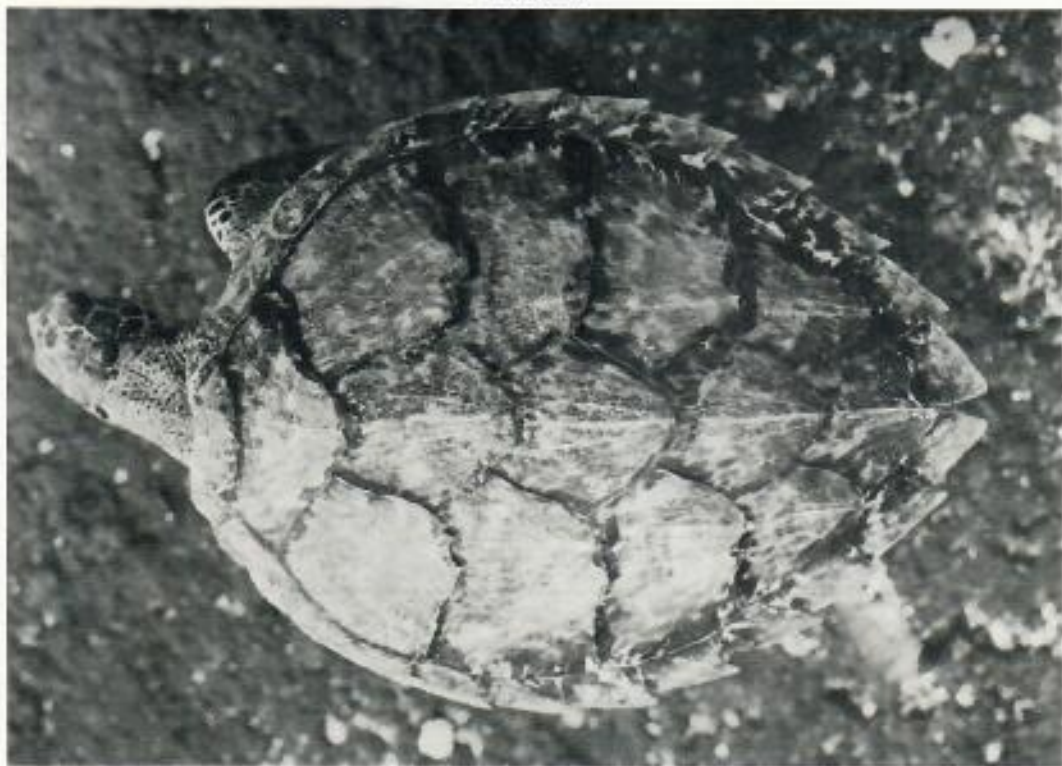


PLATE XVII

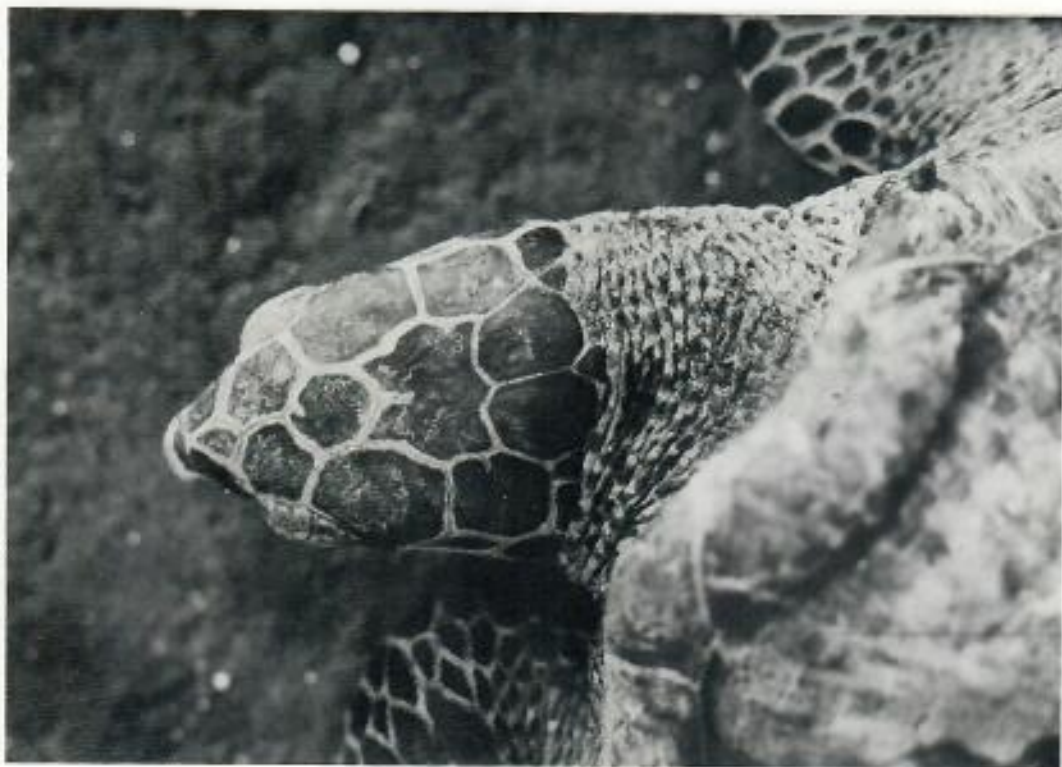
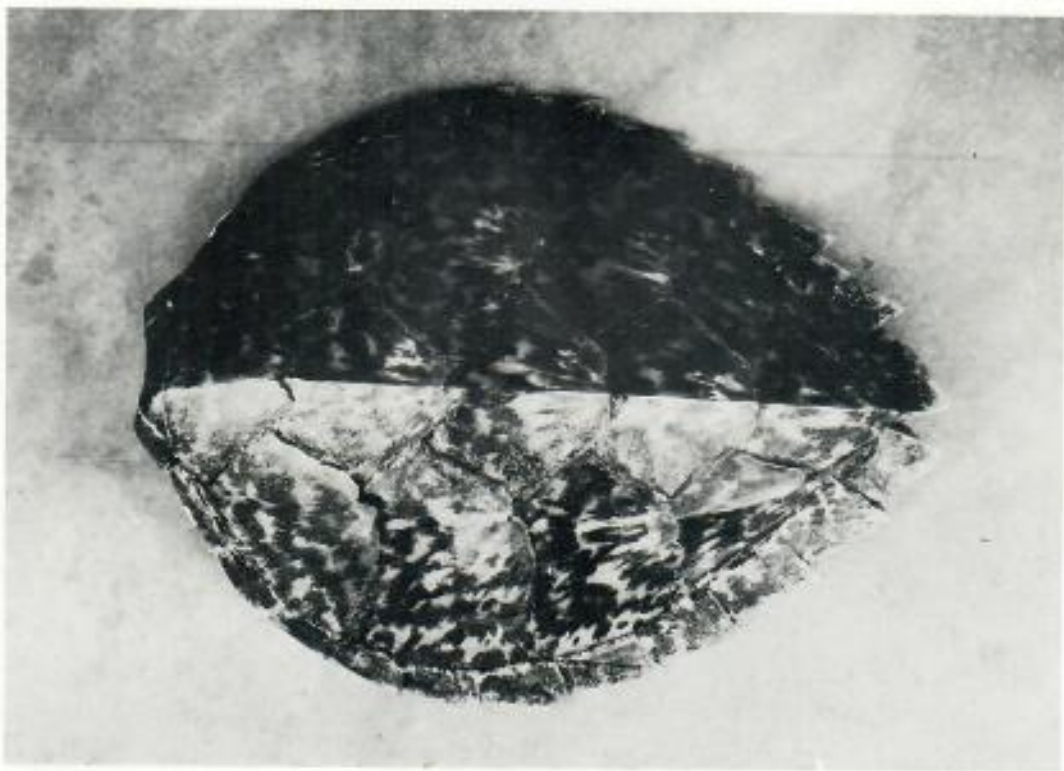
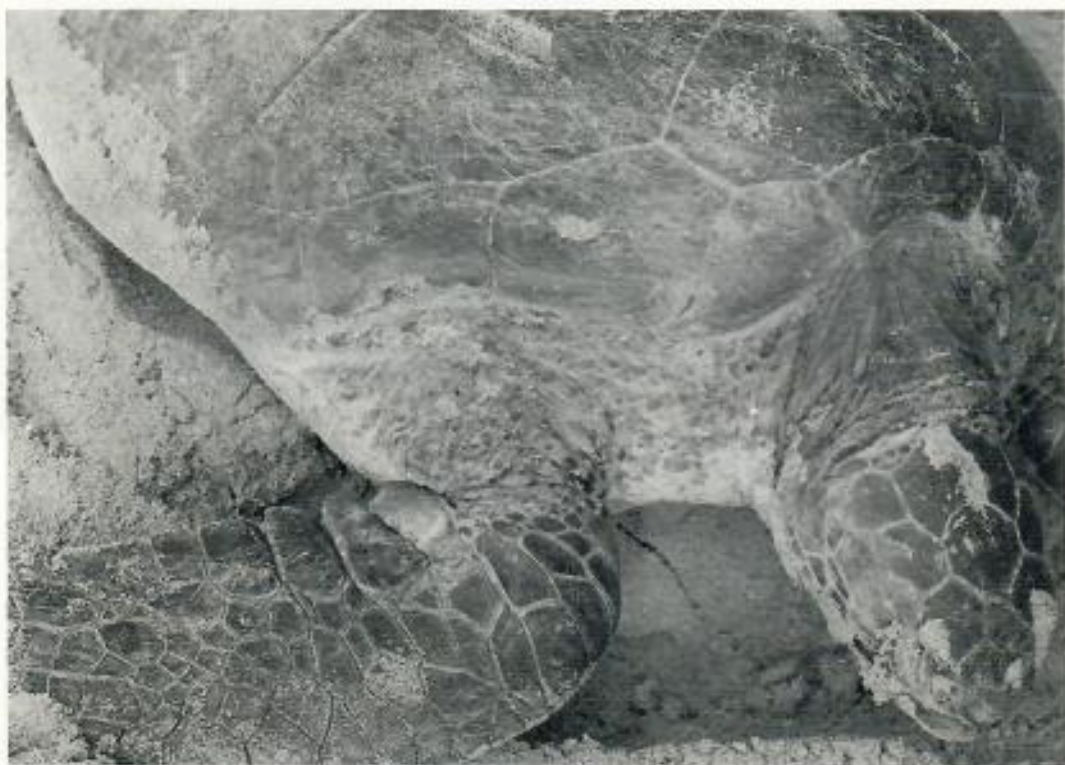


PLATE XVIII



DR. JOHN G. FRAZIER
PROFESOR
SECCION DE ECOLOGIA HUMANA
CINVESTAV IPN UNIDAD MERIDA
KM. 5 ANTIGUA CARRETERA A PROGRESO
MERIDA, YUCATAN, 97310
MEXICO

J. FRAZIER / MARINE TURTLES IN THE COMORO ARCHIPELAGO

