

The Ka‘ū Calendar News Briefs, Hawai‘i Island

Tuesday, February 13, 2024

Ka‘ū News Briefs Feb. 13, 2024



This painting was the late Herb Kane's mural in the old museum next to Punalu'u Black Sand Beach. Stolen after the place was abandoned, the image was recreated by the original artist on canvas and is in the Herb Kane collection of his family. On Thursday, March 7, a public hearing will take place before the Windward Planning Commission on Black Sand Beach, LLC's proposal. It includes plans for the old museum site, accommodations mauka of the shoreline and other enterprise. The developers seek a permit to build in the Special Management Area, which is designed to protect the shoreline. *Painting by Herb Kane*

Kane

PROPOSED DEVELOPMENT AT PUNALU'U GOES TO PUBLIC HEARING on Thursday, March 7 in the Hilo County Council Chambers. at 9 a.m. Black Sand Beach, LLC seeks a Special Management Area Permit. According to the application, approval of the permit would "allow for the development of a residential and commercial community consisting of approximately 225 residential and short stay units, village and wellness center, retail uses, rehabilitation and use of golf courses, and dedication of a portion of coastline as a conservation area on an approximately 147 acres portion of a larger 434-acre project site within the Special Management Area."



Plans for Punalu'u proposed by Black Sand Beach, LLC would include accommodations set back behind a golf course fairway. Some commercial enterprise would be close to the Black Sand Beach and Pond. It goes to public hearing on Thursday, March 7.

Image from Black Sand Beach, LLC

According to the Planning Department description of the Special Management Area, which includes all of the property proposed for the development, "The Special Management Area, or SMA, is the area of the island that is in close proximity to the shoreline. In establishing the SMA in 1975, the Hawai'i state legislature found that 'It is the state policy to preserve, protect, and where possible, to restore the natural resources of the coastal zone of Hawai'i,' and, therefore, that 'special controls on developments within an area along the shoreline are necessary to avoid permanent losses of

valuable resources and the foreclosure of management options, and to ensure that adequate access, by dedication or other means, to public owned or used beaches, recreation areas, and natural reserves is provided.' (Hawai'i Revised Statutes, Chapter 205A, Part II)"

To learn more about the Special Management Area and the SMA permitting process, see an

informational video provided by the State Office of Planning.



Details of commercial enterprise planned near Black Sand Beach and the Pond.

Image from Black Sand Beach, LLC

The Punalu'u properties proposed for the Special Management Area permit are located in the the Sea Mountain at Punalu'u resort area, east (makai) of Hawai'i Belt Road in the vicinity of Nīnole Loop Road, Nīnole, Wailau, Punalu'u, Ka'ū, Hawai'i, TMKs: (3) 9-5-019: 011, 015, 024, 026, 030, 031, 033, 035; 9-6-001: 001-003, 006, 011-013; 9-6-002: 008, 037, 038, 041, and 053.

To give testimony, the public can attend the public hearing in Hilo, or sign up to give speak via Zoom by registering before noon the day before the hearing. Register at

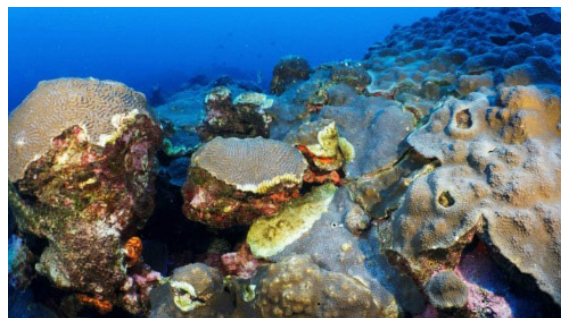
<https://www.zoomgov.com/meeting/register/vJlscOmgqzotGSpQv6m54ndW46yEqTysENk>. The meeting can be viewed at https://www.youtube.com/channel/UCAFoRMb3rfWLQMPd6TAKEGA?view_as=subscriber.

According to a Planning Department announcement, the Planning Director's background report (including application) and recommendation report for each agenda item will be available for review at www.planning.hawaiicounty.gov prior to the meeting. This information can also be requested by sending an email to WPCtestimony@hawaiicounty.gov or by calling (808) 961-8288.

To read comments, add your own, and like this story, see facebook.com/kaucalendar. See latest print edition at kaucalendar.com, in the mail and on stands.

AT&T MOBILITY PLANS A 150 FT CELL TOWER IN VOLCANO. It is applying to the Windward Planning Commission for a Use Permit to install a telecommunication facility with a 150-foot-tall monopine - looks like a pine tree - tower off Volcano Road. The project would include the cell tower and related equipment and improvements within a 1,440 square foot portion of a larger 7.383-acre parcel. The property is at 11-3049 Volcano Road, approximately 400 feet south of Volcano Road on the west side of Kahaualea Road. Hawai'i, TMK: (3) 1-1-020:159 (por.). 3.

To read comments, add your own, and like this story, see facebook.com/kaucalendar. See latest print edition at kaucalendar.com, in the mail and on stands.



National Marine Sanctuaries will host a webinar on corals on Wednesday, Feb. 28. Photo from NOAA

CORAL CAN GET SICK, just like any other animal, and coral diseases can harm whole ecosystems when they spread across reefs. That is the subject of a webinar from the National Marine Sanctuaries to be presented online on Wednesday, Feb. 28 at 2:30 p.m. The webinar, *Seaside Chats - Chasing*

Microbes: Diving into the Mystery of Coral Disease, aims to promote understanding of how the reef responds to pathogens. Lessons are drawn from the outbreak of stony coral tissue loss disease as the webinar dives into the depths of coral health research. Register for the webinar at https://register.gotowebinar.com/register/7127094180552200024?utm_medium=email&utm_source=GovDelivery Webinar ID is 615-165-955.



Dr. Alex Wegmann presents a webinar on Palmyra Atoll, which is managed by The Nature Conservancy. Photos from NOAA

The **National Marine Sanctuaries Webinar Series** is archived and includes a recent presentation on Palmyra Atoll, which is stewarded by The Nature Conservancy. It features Alex Wegmann, PhD., who

"works in thematic areas of land-sea connectivity, invasive species, seabird restoration, natural climate solutions, coral reef resilience, pelagic conservation, sustainable fisheries, and the application of biotechnology-based solutions to conservation challenges."

His responsibilities for The Nature Conservancy include advancing cutting-edge science to inform investment and actions at Palmyra Atoll, throughout the Pacific region, and at global scales. Wegmann "takes us to a remote island in the Pacific Ocean and shares how connected we are to it," says a NOAA description.

National Marine Sanctuaries webinars provide educational and scientific expertise, resources, and training to support ocean and climate literacy. It targets community and families, formal and informal educators and students (high school through college). Visit archives of the webinar series to catch up on presentations [here](#).

To read comments, add your own, and like this story, see facebook.com/kaucalendar. See latest print edition at kaucalendar.com, in the mail and on stands.



HAWAI'I ISLANDS HUMPBACK WHALE NATIONAL MARINE SANCTUARY WHALE COUNT will be on Saturdays, Feb. 24 and March 30. Register to volunteer to count the whales and learn more at <https://oceancount.org/>.

The Hawaiian word for humpback whales is koholā. The whales come to Hawai'i to give birth, nurse their young and breed before heading north to summer waters.

National Marine Sanctuary and NOAA recently released this poster of koholā, honoring Hawaiian Humpback Whale Marine Sanctuary. The art is by Matt McIntosh of NOAA

HPD Names Ka'ū's Top Cops, First Time in 80 Yrs

Ka'ū Office of the Year and Ka'ū Top Detective as the titles recently given to Rodney Kikawa, Jr. and Isaac Kikawa-Santos by the Hawai'i Police Department. The awards are the first in the department's 80-year history to be specifically bestowed on Ka'ū police officers and are similar to Officer of the Month and Officer of the Quarter awards issued by various organizations in other parts of the island.

"On behalf of the entire department, I am proud of the work Officers Kikawa-Santos, Jr. and Kikawa-Santos are doing," said

HPD Chief Benjamin Moskowitz. "Their joint commitment to serving and protecting the 'Ohai Valley community in the spirit of aloha is a model for officers island-wide."

The Ka'ū Office of the Year award is determined

by a vote of all officers in the district. "This provides the officers the opportunity to decide who amongst them, in their opinion, deserves the nomination," said Acting Captain Paul Hines, commander of the Ka'ū District. "It really speaks volumes to not only an officer's work ethic but also to his/her character."

Kikawa-Santos, a first-year officer, is determined



Isaac Kikawa-Santos, Jr. (right) receives Ka'ū Office of the Year award, with praise from Ka'ū District Commander Paul Hines. Photo: June 2020

THE KA'Ū CALENDAR

Volume 22, Number 2

The Good News of Ka'ū, Hawai'i

February 2024

Vacation Rental Legislation Bill Input Is Sought

County Council legislation on vacation rentals is "one of the most far-reaching pieces of legislation in process at this time," says County Council member Michelle Colclough in her newsletter released at the end of January. Bill 121 seeks to provide a consistent framework to regulate the Transient Accommodation Rental (TAR) business in Hawai'i County. You can learn more about this bill at <http://legis.hawaii.gov/legis/>.



The Planning, Land Use, and Economic Development Committee of the County Council recently heard Bill 121 and agreed to pass it on to the Land and Watershed Planning Commission, as well as the Planning Director, for review and recommendation. Bill 121 will receive another hearing in Committee, as well as 2 hearings at the full Council, so there are numerous opportunities to provide feedback on this bill.

Colclough writes that to "help address the lack of housing and the affordability crisis in our County, District 2, County Councilmember Jess Kagiwada and I are currently working on HCR 107, which will create a new Long-Term Rental tax class that will provide a professional and property tax rate for property owners to rent their houses long-term (more than 180 days)."

Ryan Kanaka'ole who has deep roots in Ka'ū has been named first deputy of state Department of Land & Natural Resources. Kanaka'ole has faculty in Wai'aleale, connected with the Young Yung Stone, and has been involved in the ownership of the lands in Ka'ū that were purchased for preservation - owned by the county, and managed locally. He was director and interim chair for the Nā Mānoa o Kāhala.



Punalu'u Village accommodations would be set back about a quarter mile from the coast. Inner commercial areas would be just under a half mile from Black Sand Beach. The proposal is before the Watershed Planning Commission for a Special Management Area permit. Illustration from Black Sand Beach, LLC

SMA Permit Sought for Punalu'u Accommodations, Commerce

Development plans for beach area Punalu'u's Black Sand Beach are submitted to the county Planning Department and will go before the Watershed Planning Commission to consider approval of a Special Management Area permit. The major SMA permit would be required for the Black Sand Beach, LLC

applicant to take the next steps. A public hearing is expected sometime in March. A sign has been placed along Hwy 13 at the Nihoa Loop intersection. Called Punalu'u Village, the project would include far fewer accommodations than proposed by earlier developers who planned for more than 1,500 units at

Punalu'u. This project is set back about a quarter mile from the coast, with most of the 223 units near the existing Colony One condominiums. A line of 63 Colony One condos would be similar to Colony One. Another concentration of accommodations would be around the old Punalu'u Village, pg. 2

Mitch Roth Launches Campaign for Reelection

Mayor Mitch Roth will run for reelection. He declared his candidacy during an event at Nani Mahealani in Hōle in January. He asked the community "to continue dreaming together" and talked about his vision for a sustainable Hawai'i Island that builds on the achievements he made during his first term in office. He pointed to Hawai'i's County housing and "our vibrant



Mayor Mitch Roth. Photo by Joe Wright

ing and pursuing achievement, investments made in infrastructure and public, environmental, ownership initiatives, clean energy transition and transportation, and health and safety commitments as the focus of his administration. Roth said he is committed to ensuring that "the next generation can call Hawai'i home without facing the need to leave." He talked about taking care of people, the land and "our vibrant

Hawaiian culture." He noted that there are more Hawaiians living out of the state than in the state. "As we love our Hawaiians, we love our culture. As we love our culture, we love our identity of who we are. As we love our identity, we become Hawaiians in Los Angeles, Oahu, Inouehou and so on." The mayor said that in its first three years, the Roth administration has been successful in making Hawai'i County a better place for housing. In 2020, there were about 1,200 houses in the pipeline to

PRINCE LTD
US POSTAGE
PAID
HAWAII, HI
PERMIT NO. 1

***KICKBOX
Printed Newsletter

Also in this issue:

- F2 Berries • F3 Pāhala • F4 Sports Report • F6 School & Youth • F8 Community Calendar • F10 NEWS • F11 Kōhala to Māhala • F12 Energy & Sustainability • F13 Health • F14 Values

The Ka'ū Calendar newspaper, 5,000 in the mail. 2,500 on the streets.

USDA 2024 Hawaii Range Camp

He ali'i ka 'aina, he kauwa ke kanaka | The land is chief, man is the servant.



What is Range Camp?

The Hawaii Range Camp is a week-long, hands-on, field-based educational camp designed to introduce students to the ecosystem services and functions as well as the professional world of plant, animal, and landscape management unique to rangelands in Hawaii.

Who should attend?

High School students who are interested in agriculture, natural resources, ecology, watersheds, livestock or wildlife. Preference given to Juniors and Seniors.



When: March 18-22, 2024

Where: Hanaipoo Cabin, Parker Ranch, Waimea HI

2024 Session Topics to include...

- Natural and Agricultural History of Hawaii
- Parker Ranch History & Ranch Mo'olelo
- Intro to Range and Natural Resource Management
- Watershed function on working rangelands
- Soils & geology
- Botany/Plant ID
- Herbivore anatomy and nutrition
- Forage Nutrition and Management
- Livestock Production
- Estimating forage production and forage allocation
- Range Ecology, Rangeland Health and Grazing Management
- Wildlife and Range
- Contemporary issues and challenges facing rangelands
- Fire and Rangelands

Each camper will receive a camp information packet with agenda, and list of things to bring. During camp each participant will receive a Range Youth Camp t-shirt and notebook filled with presentations and handouts.

Please contact Carolyn Auiwebo at 808-950-9674 or nakulohawaii@gmail.com with questions about camp.

Enrollment Fee: \$100 (helps cover materials, transportation and food).
Registrations are non-refundable.
Scholarships are available!

For more information and to register go to: <https://www.hirangelandstewardship.org/>



HAWAII STATE PUBLIC LIBRARY SYSTEM PRESENTS



Keiki Storytime- LOVE!

Thursday, February 15
11:00 am

Nā`ālehu Public Library
95-5669 Mamalahoa Highway
808-939-2442



Join us for a storytime all about love!

We'll read lovely stories, sing lovely songs, and make a friendship necklace or bracelet to share with a friend.

Suitable for toddlers and preschoolers. Children under five years old must be accompanied by an adult caregiver.

Anyone who requires an auxiliary aid or service for effective communication, or a modification of policies or procedures to participate in a program, service, or activity should contact library staff as soon as possible. Advance requests 48 hours or more before the event are encouraged, but not required. All programs are subject to change. See a schedule of upcoming events at librarieshawaii.org/events.



FOLLOW US: [HSP_L34400/](https://www.facebook.com/HSP_L34400/)

HAWAII STATE PUBLIC LIBRARY SYSTEM PRESENTS



Sewing for Beginners

Tuesday, February 20
3:00pm – 4:00pm
Nā`ālehu Public Library
95-5669 Mamalahoa Highway
808-939-2442



Join us for the first installment of this Spring's sewing series!

Join local sewing expert Margaret Bourget to learn sewing basics, beginning with your very own sewing kit. All materials are provided and free for participants.

This hour long program is suitable for ages 8 and up. Please see a staff member or call the library to reserve your space!

Generously sponsored by the Friends of the Ka`u Libraries.

Anyone who requires an auxiliary aid or service for effective communication, or a modification of policies or procedures to participate in a program, service, or activity should contact library staff as soon as possible. Advance requests 48 hours or more before the event are encouraged, but not required. All programs are subject to change. See a schedule of upcoming events at librarieshawaii.org/events.





MALAMA KAI FOUNDATION PRESENTS

Reef Talks

A monthly lecture series on ocean conservation



**Sharing Stories of Positive Ocean Progress
Meet The Edges of Earth Expedition Team**

Andi Cross, Marla Tomorug, and Adam Moore

HOSTED BY



February 22, 2024

5:30 - 7:30 PM



**Ridge to Reef Restoration Center (3RC)
73-4485 Kahilihili Street, Kailua-Kona
www.malamakaifoundation.org**



CU HAWAII
Federal Credit Union

Aloha CU Hawaii Member,

We are excited to celebrate Hawai'i Island's
2024 graduating high school seniors and
current undergraduates by helping to provide
MORE POSSIBILITIES for their futures with
\$25,000 worth of scholarships!

SCHOLARSHIP PROGRAM

**DEADLINE:
MARCH 15, 2024**



**Click on the photo above to learn
more and start your application!**

Questions? Contact us at (808) 930-7270
or community@cuhawaii.com



See <https://apply.mykaleidoscope.com/scholarships/CUHawaiiMorePossibilities2024>



Shaping the Future of Hawai'i's Wastewater Infrastructure

The County of Hawaii Department of Environmental Management is developing an Integrated Wastewater Management Plan (Plan) to help provide a road map for cesspool conversions and sewer infrastructure projects. As a part of the Plan, the County is conducting two rounds of public engagement workshops on cesspool conversions to share information and seek public input.



Meeting dates, times, and locations for the first round of public engagement:

LOCATION #1

Kona Meeting

Date: 2/13/2024

Location: Makoao County Pavilion
75-5560 Kuakini Hwy, Kailua-Kona

Time: 5:00 - 6:30 PM



LOCATION #3

Ka'u Meeting

Date: 2/27/2024

Location: Nā'ālehu Community Center
95-5635 Hawai'i Belt Rd, Naalehu

Time: 5:00 - 6:30 PM



LOCATION #2

Hilo Meeting

Date: 2/15/2024

Location: Aunt Sally Kalechano's
Lū'au Hale - 799 Pillani St, Hilo

Time: 5:00 - 6:30 PM



LOCATION #4

Kohala Meeting

Date: 2/28/2024

Location: Kohala Intergenerational Center
Kamehameha Park Rd, Kapaau

Time: 5:00 - 6:30 PM



More information on the second round of public engagement workshops will be provided in the near future.

For additional information or for special accommodation requests or inquiries, please contact:

Kelly Hartman

Department of Environmental Management,
County of Hawaii

Kelly.Hartman@hawaiicounty.gov

808-961-8512

For additional information about the Department of Environmental Management, please visit:

www.dem.hawaiicounty.gov





County of Hawai'i
DEPARTMENT OF
WATER SUPPLY
6th ANNUAL
Keiki Water Conservation
POSTER
CONTEST

How to enter:

- 1 View "Save Water to Help the Earth" video under the "Conservation" link at www.hawaiidws.org.
- 2 Create your original artwork (see rules and guidelines below).
- 3 Fill out the attached entry form and submit poster by mail or in-person to any DWS office island-wide by Friday, March 15, 2024.

2024 Contest Theme:
Water Is Life

Who: Open to all Hawai'i County K-6 students

What: 11" x 17" Water Conservation Poster

- Horizontal (landscape format), white poster paper
- Any media except chalk, charcoal or oil-based crayon
- Only original artwork (no computer graphics, photographs, 3-D objects) by a single individual (no collaborative work). Plagiarism will result in disqualification.
- Please submit poster flat, not rolled
- Student identification must be clearly listed on the back, bottom right corner of the poster, including **Full Name, School, Grade, and Teacher's Full Name**
- Each poster must be submitted with an accompanying entry form (see back of flyer).
- If a teacher/parent is submitting multiple entries, only one form per grade is needed
- Entries should focus on fresh drinking water (not ocean water or bottled water)

When: **By Friday, March 15, 2024**

Where: Mail or drop off at: **Department of Water Supply**
345 Kekūanaō'a Street, Suite 20, Hilo, HI 96720

Entries may also be dropped off at DWS offices in Kona or Waimea. See entry form for addresses.

Why: **We all must protect our most precious resource - water**

- Let's learn to conserve our precious water resources for future generations.
- Water is essential for all life and is a limited resource that cannot be replaced.
- Water truly is our most precious resource!

Prizes will be awarded to the two top entries, as chosen by judges, from each grade level. The Department of Water Supply may reproduce winners' names and their entries, which will be announced at a future Water Board meeting. Posters may be picked up from the DWS' Hilo Office after June 15, 2024. The office is open from 7:45 a.m. to 4:30 p.m. weekdays, excluding holidays, and is located at 345 Kekūanaō'a Street. Posters not picked up by July 31, 2024, will be discarded. For questions or more information, please contact DWS at (808) 961-8050, visit www.hawaiidws.org or email dws@hawaiidws.org.



The Ka`u Calendar at [11:33 PM](#)

Share

[Home](#)



[View web version](#)

About The Ka`ū Calendar

[Ka`ū News](#)

[The Ka`u Calendar](#)

Powered by Blogger.

