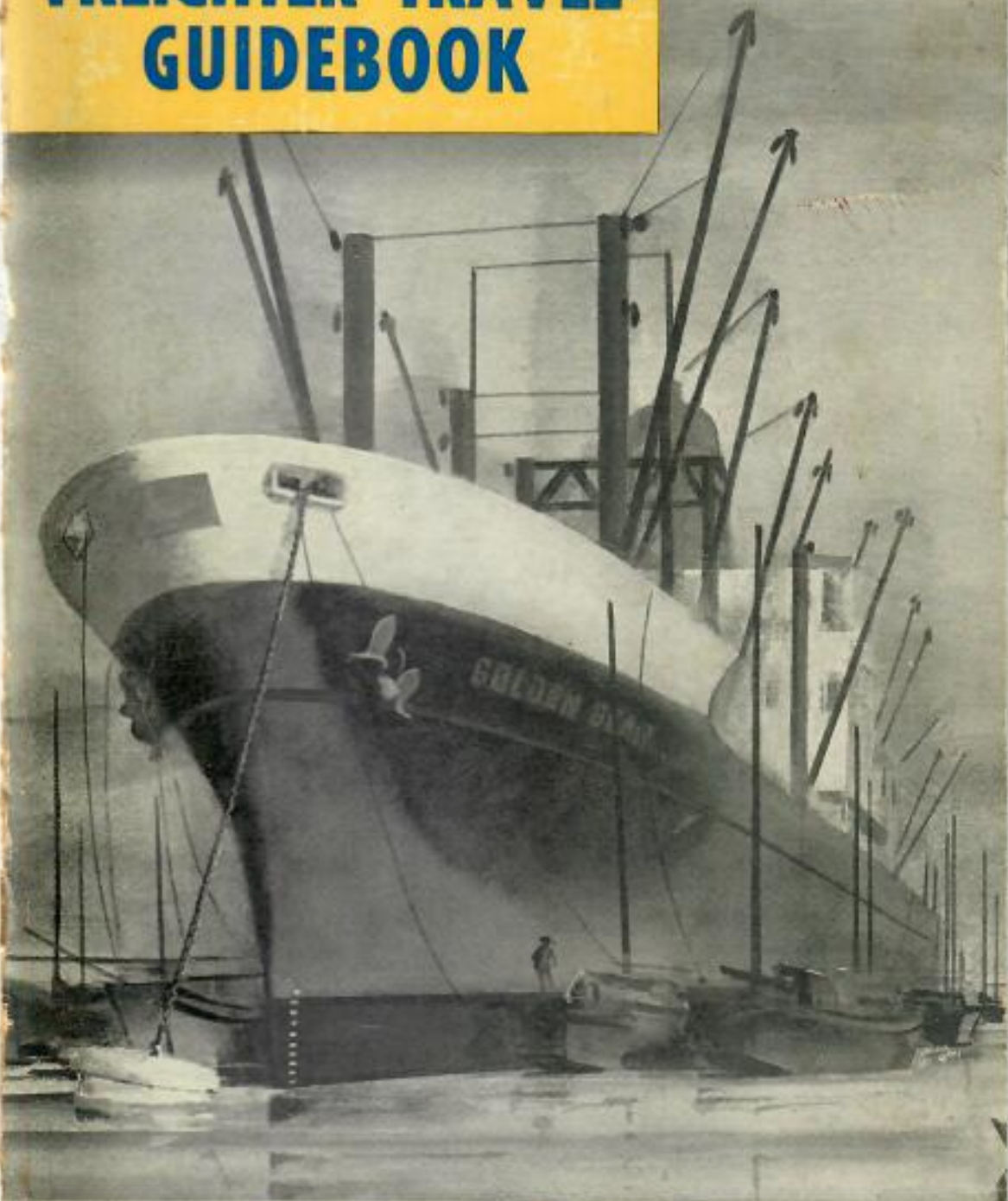


FORD'S
FREIGHTER TRAVEL
GUIDEBOOK

21st EDITION
SUMMER 1963



A semi-annual directory of
FREIGHTER-PASSENGER SHIP SERVICES
to all parts of the world

21st Revised Edition

• Summer 1963

Ford's FREIGHTER TRAVEL GUIDEBOOK

The National Directory

Established in 1952

Issued semi-annually in March and September

Single copy \$2.75

SUBSCRIPTION PRICE (2 semi-annual issues) \$5.00 in the U.S. and possessions, \$5.50 in Canada. All other countries \$6.00. Foreign subscriptions and sales should be remitted by International Money Order in U.S. funds payable at Los Angeles, California.

CONTENTS

Index of Steamship Lines.....	2
Introduction to Freighter Travel.....	5
Directory of Travel Agents.....	11
Ports of Call Index.....	17
Listings of Freighter-Passenger Ship Services	
From Atlantic Coast Ports.....	43
From Gulf Coast Ports.....	79
From Pacific Coast Ports.....	89
From Great Lakes Ports.....	110

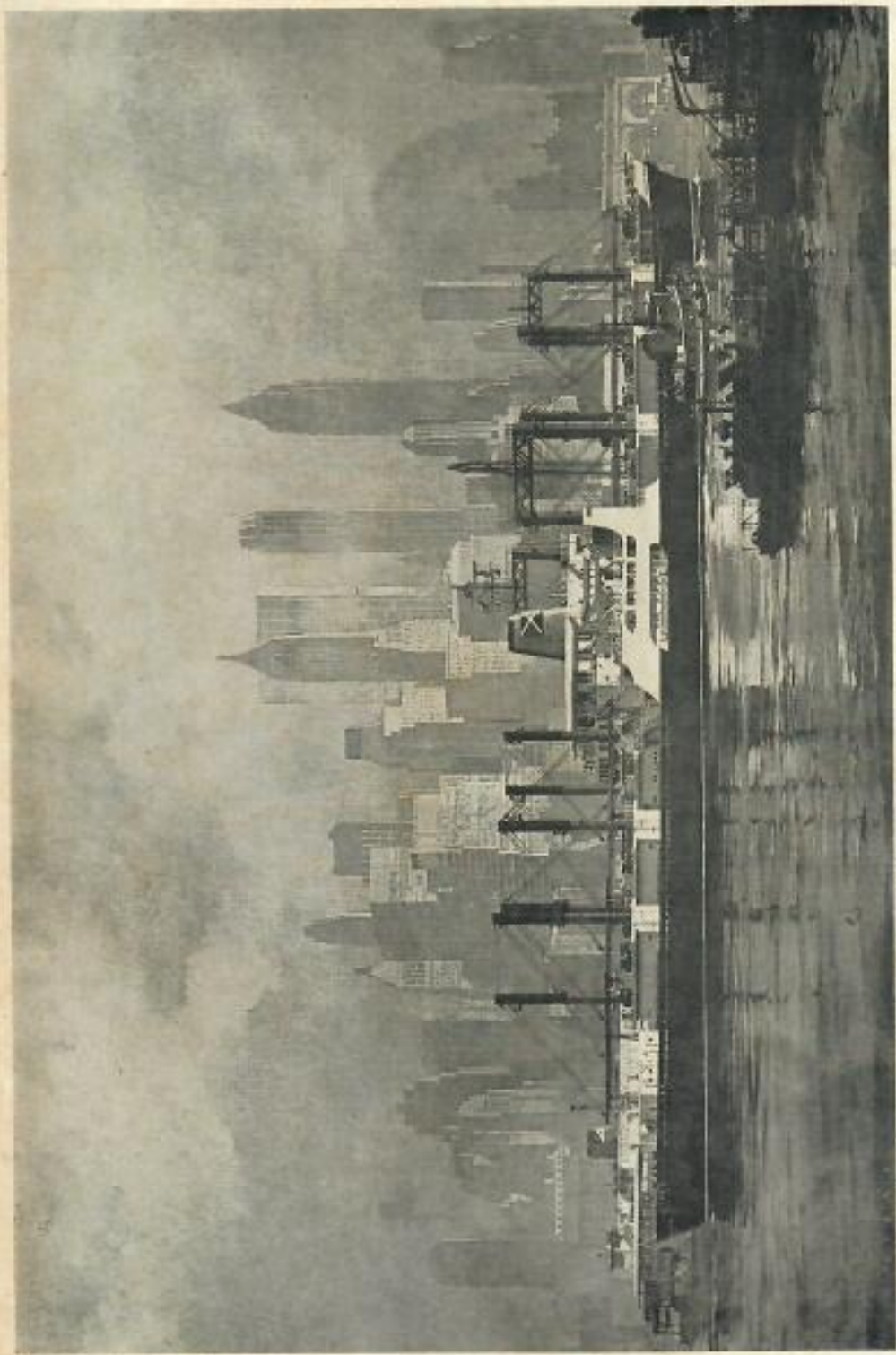
Published by

Kenneth Ford, 2031 Glendon Avenue, Los Angeles 25, California

The information contained in this guidebook is corrected semi-annually from data supplied by shipping companies and/or their agents. Every effort is made to assure accuracy of the information though the Publisher cannot assume responsibility for errors, omissions or changes.

*Reprinting in whole or part forbidden
except by written permission of the Publisher.*

Copyright 1963 by Kenneth Ford. Printed in U.S.A.



Farrell Lines' S.S. "African Meteor" in New York Harbor.

C. G. Eevers

INDEX OF STEAMSHIP LINES

	Listing No.		Listing No.
A			
Alcoa Steamship Company, Inc.	6-7-96	Hamburg-American	
American Australian Line	67	Line	25B-28-104-118A-154-169
American Export Lines	43	Hamburg-Chicago Line	167
American Mail Line	133	Hansa Line	44B
American Pioneer Line	66-70	Hanseatic Line	123
American President		Head Line and Lord Line	20
Lines	1-73-74-116B-128-130	Hellenic Lines Limited	49-52-78A
Argentine State Line	63	Hoegh Line	48
Azores Steamship Line	41	Holland-America Line	101-105-120-157
B			
Barber Line	5-71-116A-139	Iceland Steamship Co., Ltd.	38
Barber-Fern-Ville Lines	126-139	Independent Gulf Line	102
Barber-West African Line	84	Interocean Line	155
Belgian Line	31	Isbrandtsen Company	46-117A
Belgian-African Line	85	Isthmian Lines	44A-68-78-142
Black Diamond Steamship Co.	29-85A	Italian Line	161
Black Star Line	81-111A	Ivaran Line	60
Booth Line	11-58A	J	
Bull Line	13	Java Pacific & Hoegh Lines	131
C			
Cairn-Thompson Line	22B	Johnson Line	151
Chargeurs Reunis	85A	K	
Chilean Line	99A	Kerr Steamship Co.	48
Christansen Canadian African Lines	82	Klaveness Line	135
Columbus Line	56-65-145A-145B	Knutsen Line	134
Compagnie Maritime Belge S.A.	31	L	
Companhia de Navegacao		Lykes Lines	42-91-100-108-110-114
Corregadores	41	M	
Concordia Line	44-45	Manchester Liners, Ltd.	20A-22A
Cosmopolitan Line	24	Maritime Company of	
Costa Line	53	the Philippines	69-140C
D			
d'Amico Line	160A	Matson Lines	124-145
Delta Line	97-111	Meyer Line	30
Dutch World Services		Moore-McCormack Lines	32-59-86-148
(see Nedlloyd Lines)		N	
E			
East Asiatic Company, Inc.	119-160	Nedlloyd Lines	
Elder Dempster Lines	88	Africa Service	162
Ellerman & Bucknall Lines	67	Canada-Middle East Service	47B
F			
Farrell Lines	83	Great Lakes-Middle East Service	171
Fern-Ville Caribbean Service	118	India Service	77A
Fern-Ville Far East Lines	113-126	Mediterranean-Persian Gulf Service	54
Fred Olsen Line	159	Nervion Line	109
Fimlines	37B	New Zealand Shipping Co., Ltd.	67A
French Line	119A-156	Nopal Line	97A
Furness Great Lakes Line	168	North German Lloyd	28-104-118A-154-169
Furness Lines (Pacific Coast)	120A-152	Norwegian American Line	34
G			
Grace Line	8-16A-16B-18-147	O	
Gulf & South American SS Co.	99	Oceanic Steamship Company	145
H			
I			
J			
K			
L			
M			
N			
O			
P			

INDEX OF STEAMSHIP LINES—Continued

	Listing No.		Listing No.
Pacific Islands Transport Line	144	T	
Pacific Republics Line	148	Tasman Pacific Service	143A
Pacific Star Line	75	Thorden Lines	36
Port Line	66A	Torm Lines	51-61
Poseidon Lines	25	U	
R		Union Steam Ship Co. of N.Z.	143
Red Star Line	29A	United Fruit Company	9-92-116
Robin Line	86	United Philippine Lines	137
Royal Mail Lines	153	United States Lines	23-66-70
Royal Netherlands S.S. Co.	16-96A	W	
S		Waterman Line	103-107-121
Sabre Line	72-112	Waterman of Puerto Rico, U.S.A., Inc.	90
Saguenay Shipping Limited	12-22-164	Westfal-Larsen Line	149
Scandinavian American Line	35	Wilhelmsen Line	139
Scindia Line	77	Wilhelmsen Lines-Swedish American Line, Joint Services	33-37-103A
Shinnihon Steamship Co., Ltd.	140A	Y	
Sidarma Line	102A	Yugoslav Great Lakes Line	170
South African Marine Corp. (N.Y.)	87	Yugoslav Line	50
Standard Fruit & SS Co.	14-17A-93-94	Z	
States Line	125-127	Zim Israel Navigation Co.	47-106-166
Swedish American Line-Wilhelmsen Line, Joint Services	33-37-103A		
Swedish Transatlantic Line	37		
Swiss Shipping Co., Ltd.	25A		

Sail COLUMBUS

The Proudest Name In Seamanship



Modern German Flag Vessels

NEW YORK
TO
RIO DE JANEIRO
SANTOS • MONTEVIDEO
BUENOS AIRES

Also fast direct service to
SYDNEY, AUSTRALIA

For details
See Listings Nos. 56 and 65



26 Broadway
New York 4, N.Y.
HA 5-6700



Freighter voyages to the Mediterranean...Around the World

4 Modern Freighters to Choose from, offering the very latest in passenger accommodations. EXPORT AMBASSADOR, EXPORT AGENT, EXPORT ADVENTURER and EXPORT AIDE are designed to carry a maximum of 12 passengers. It's almost like traveling on your own private yacht. Sailings from U. S. Atlantic ports to the Mediterranean, Adriatic and Black Sea areas and to the Mediterranean, Red Sea and Indian Ocean areas.

A 'Round-World Service eastbound is offered by the Isbrandtsen Steamship Company, a division of American Export Lines. Modern U. S. flag C-2 type freighters carry 10 to 12 passengers. Superior accommodations are available on the

Flying Endeavor-type ships at slightly higher fares. In ships of both types, each stateroom has a private bath. Sailings from U. S. Atlantic ports to the Mediterranean, Middle East, India, Orient, U. S. West Coast and Puerto Rico. Or enjoy a trip from West Coast to Puerto Rico and New York. See listings 43, 46 and 117A for more information.

Or Sail on One of the Famous Aces, EXETER and EXCALIBUR. Both are handsomely equipped to accommodate 124 passengers to ports in Spain, France, Italy, Greece, Egypt, Lebanon. 42 days for round-trip cruise.

Contact your Travel Agent or American Export Lines direct for sailing dates and ports of call.

AMERICAN EXPORT LINES

AND ITS
ISBRANDTSEN STEAMSHIP COMPANY
DIVISION

666 FIFTH AVENUE, AT 52nd ST., NEW YORK 19 • DIGBY 4-3000 • 26 BROADWAY, NEW YORK 4. Also Baltimore, Boston, Chicago, Miami, Philadelphia, Toronto, Washington, Los Angeles, San Francisco, Portland, Seattle, Vancouver.

Introduction to FREIGHTER TRAVEL

FREIGHTER travel has been so little publicized that many people are not fully aware of the many advantages modern cargo-passenger ships offer for world-wide travel in accommodations that range from simple to luxurious at costs that are modest by any comparison. The purpose of this book is to furnish reliable information about these vessels and their passenger accommodations and the services for travel on them which are available from the United States and Canada.

Persons planning vacation travel will find the book contains many suggestions for trips to interesting foreign countries that take anywhere from two weeks to six months and at costs that will fit most travel budgets. Of special interest are the freighter cruises. Some of these include calls at only a few ports and most of your time would be spent cruising leisurely at sea, others go from port to port providing a never ending change of interest and scene. In addition to regular stops, your ship being a cargo ship may call at exotic off-the-beaten-path ports the average tourist never gets the opportunity to visit.

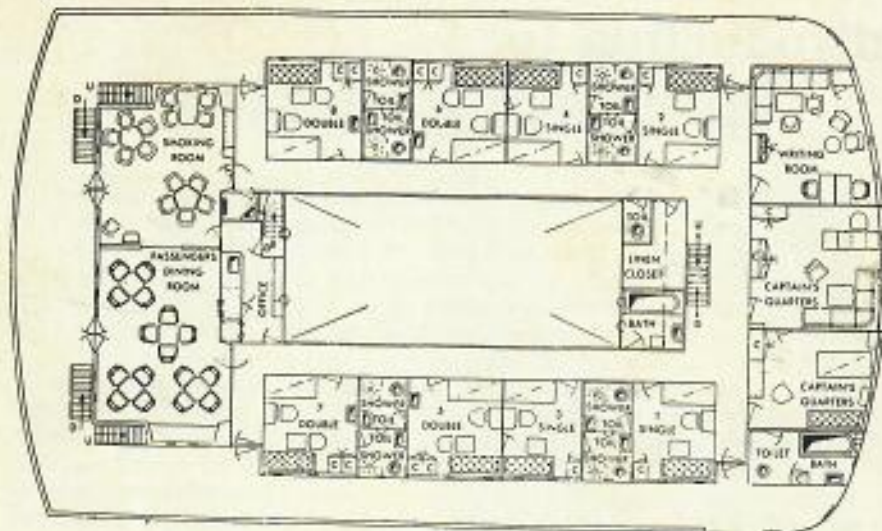
Freighter-passenger ship services to any port may be located in the Ports of Call Index section. To find services between any TWO ports look for the names of steamship lines that are common to BOTH ports. Listings with information about these services are arranged in four geographical sections showing services available from Atlantic, Gulf and Pacific and Great Lake ports (see Table of Contents on inside front cover).

What is a Freighter?

The International Conventions and Conferences on Marine Safety define the passenger-carrying **freighter or cargoliner** (the term is interchangeable in common usage) as "a vessel principally engaged in transporting goods which is licensed to carry a maximum of 12 passengers." Similar vessels which are licensed to carry more than 12 passengers are defined as **combination cargo-passenger ships**. The maritime laws of many nations, including the United States, require all vessels carrying more than 12 passengers to have a doctor aboard, also additional officers, crew members and safety equipment in proportion to the total number of passengers the vessel is licensed to carry. Most freighters, being limited to carrying a maximum of 12 passengers, do not carry a doctor aboard. The so-called "tramp steamers" of yesterday are gone. Like the covered wagons, they belonged to a colorful and romantic era which has long since passed and today you would have to search the seven seas to find one. Most of today's American flag passenger-carrying freighters are of six types and vary in length from 412 to 572 feet as follows: C-1 (412 feet), C-2 (459 feet), C-3 (492 feet), Mariner (563 feet), Sea Racer (564 feet) and C-4 (572 feet). It is vessels of these types that are described in this book.

Passenger Accommodations

Passenger accommodations on freighters are generally located amidship where vibration from the propellers is almost non-existent. Cabins are



Plan of passenger accommodations on a typical freighter.

spacious, comfortably furnished and are frequently air conditioned Accommodations on many of the latest C-3, C-4, deluxe Mariner and Sea Racer type vessels are of the luxury type and compare favorably with those of the finest passenger liners—decorating by top interior decorators, beautiful furnishings, wall-to-wall carpeting, glass-walled dining rooms, picture windows, taped music, service telephones, even passenger elevators.

Why People Travel By Freighter

Experienced world travelers with time to travel in a leisurely and comfortable manner say they travel by freighter because they get the most value for their travel dollar. Many who can well afford more costly ways to travel prefer freighter travel because they like the carefree informality on these ships. You can be as active or as luxuriously lazy as you like, there are no crowds, no planned entertainment, no bother about formal attire or dressing for dinner. Persons seeking rest and relaxation away from the cares and tensions of a busy world will find the answer in a freighter cruise. The peace and quiet of life at sea blends perfectly with the thrill and adventure to be found sightseeing in foreign ports.

Your Fellow Passengers

You will be a member of an exclusive group which usually numbers between eight and twelve passengers on most vessels. If there was a Who's Who published of those who travel on freighters it would contain the names of people in all walks of life. Among them you will find business and professional people, doctors, lawyers, teachers, students, young couples and middle-aged couples, and single men and women. You will be brought together in an atmosphere of friendly neighborliness where lasting friend-

ships are easily made. And you will be pleasantly surprised when you discover your fellow passengers are the very nicest kind of people, just the kind you hoped they would be.

Food

Food served on freighters is of good quality, well prepared, and the same as served the ship's officers. Although lacking the variety found on luxury cruise ships, the menus are varied and there usually is a choice of several entrees, frequently steaks or roasts, and a varied selection of vegetables, fruits and desserts. Coffee and tea are available anytime, and the steward may set a tray in the pantry with cheese, cold meats and sandwich spreads for passengers to help themselves to between-meal snacks.

No Doctors On Freighters

Persons considering freighter travel are reminded that with few exceptions these vessels do not carry a doctor aboard, and no medical service other than First Aid is available. Persons with a heart ailment or other organic disorder which might require the services of a doctor, and those requiring a cane or other support should not apply for passage on vessels of this type.

Age Limit For Passengers

Each steamship company has its own rules regarding the age limit for passengers. In general, however, most companies require persons 65 years of age and over to furnish a statement from a medical doctor certifying the applicant to be in good health, without any chronic disease, infirmity or disability, and able to travel alone and without requiring special attention on a vessel which does not carry a doctor aboard.

Smoother Sailing

Another point in favor of freighter travel is that this type of vessel rides more smoothly on the water than do their proud sisters, the passenger liners. Heavily laden with cargo, they ride with most of their weight below water and out of reach of the wind and surface waves. The heavy weight below water acts as a stabilizer, causing them to ride more steadily than passenger ships with their tall hulls riding above the water and exposed to the full action of wind and waves. Besides the stabilizing effects of the tonnage below water, the wide beam of freighters also helps to minimize any tendency to roll.

Passports and Visas

All persons when traveling abroad are required to have passports of their respective countries, or other travel documents in lieu thereof. Information regarding current passport requirements may be obtained by writing to Passport Division, State Department, Washington, D. C., or from your Travel Agent or any steamship line listed in this guidebook.

Your passport, issued by the Department of State, Washington, D. C., permits you to leave the country, and return. It identifies you as an American citizen. It is valid for three years and may be renewed for an addi-

tional period not exceeding five years from date of issue.

Getting a passport is a simple, brief procedure—if you round up everything you need in advance. You must apply in person, so have everything on hand to save yourself the nuisance of a return trip. Allow 10 to 14 days for processing the application by the State Department, Washington, D. C.

Where to apply. In New York City, Boston, Chicago, New Orleans, Los Angeles and San Francisco, apply in person to any United States Passport Agency. In Washington, D. C., apply to Passport Office, Department of State.

Elsewhere, apply in person to any Federal Court or State Court authorized by law to naturalize aliens.

What You Need. (1) Proof of U. S. Citizenship. This may be a birth certificate, or naturalization papers or an out-dated passport.

If these are not available, bring a certified copy of your baptismal record if it indicates place and date of birth. Or bring a notarized affidavit executed by a parent, brother, sister or other relative, preferably older than you attesting to your place of birth.

IMPORTANT: Your birth certificate or other documents must be officially endorsed. Duplicates or other unstamped copies usually meet a flat rejection which means getting an official replacement.

(2) Identifying witness. The law states that NO witness is required if you can present any one of the documents below at the time of application:

(a) Certificate of Naturalization, providing it gives a physical description of applicant and signature of applicant.

(b) Automobile operator's license, providing it gives a physical description of applicant and signature of applicant.

(c) Government, or business or industrial Identification Card providing it gives a physical description of applicant and signature of applicant appears on card.

(d) A previously issued U. S. Passport.

If none of these documents is available, you must be accompanied by an American citizen over 21, who has known you for at least two years. This witness should have a driver's license or other official paper for self identification. This witness may be a relative.

(3) Two duplicate photographs. These prints should be of a recent photograph. They should show you full face, against a light background. The paper should be thin, and measure from $2\frac{1}{2}$ x $2\frac{1}{2}$ inches to 3 x 3 inches. **Note:** It is sometimes well to have extra prints made to facilitate obtaining a Landing Permit for shore leave in the event your ship should call at unscheduled ports.

(4) Issuance Fee of \$10.00. Cash or checks acceptable for payment. Some courts may charge an additional fee of 50 cents to \$2.00 for a "service charge."

Non U. S. Citizens who are resident aliens need an Alien Registration Card (Form 1-151) if leaving the U. S. for less than a year, or a re-entry permit if leaving for one or more years and permanent residence in the U. S. is not abandoned. Non-U. S. citizens also need a valid passport or certificate of identity.

Visas. Travel nowadays has been greatly simplified. Visas are not required to enter most countries of Europe for visits of less than three or four months. Elsewhere in the world visas are generally necessary. Non-U. S. citizens and persons holding certificates of identity have special visa re-

quirements for some countries. Your Travel Agent has information about the countries you plan to visit.

Planning Your Freighter Trip

Because of the popularity of freighter travel there are times when the demand for accommodations is greater than the supply of available space; this is especially true during the summer months. Also, the heavy demand for travel to certain parts of the world may cause accommodations on steamers to be sold for months ahead; some lines normally have a waiting list. So, in considering a freighter trip it is well to keep these conditions in mind and make your travel plans as far ahead as possible.

Schedules and Itineraries

Because these ships are freighters, their sailing and arriving schedules cannot be rigidly adhered to. Also, the time a ship stays in each port will vary according to the amount of cargo that is to be taken aboard and discharged. A vessel's itinerary may change up to the last minute before sailing. Voyages may be several days longer or shorter than anticipated. One or several ports of call may be added or dropped, depending upon the amount of cargo offered, port congestion, weather conditions, etc. These possibilities of change and delay are mentioned because they are inseparable from this form of travel, and should be considered by prospective passengers before applying for passage.

Vaccination Certificate

A smallpox vaccination certificate is required for your re-entry into the United States or for passage through any U. S. territory or possession. Exceptions are made for short visits to some countries adjacent to the United States.

You must have been vaccinated within three years of date of re-entry, and you must have the International Certificate of Vaccination issued by the U. S. Department of Health, signed by your doctor and countersigned by a representative of your board of health.

Cholera and yellow fever certificates are required by persons arriving from certain areas. These certificates as well as others for typhus and tetanus are required for entry into some countries. Further information about the countries you plan to visit may be obtained from your Travel Agent.

Visit A Passenger-Carrying Freighter

Shipowners are proud of their ships and welcome the opportunity to show them to interested persons. If you live near one of the principal seaports, write a letter to the line in whose services you are interested and ask for a pass to visit one of their ships. A courteous officer will welcome you aboard and show you all the accommodations that are for passengers' use. You'll find it a very interesting experience, and it's safe to predict you'll be pleased with what you see and eager to start making plans for that trip you have been promising yourself for so long. Bon voyage!

Unhurried cruising
to unspoiled ports . . .

GRACE LINE FREIGHTER VOYAGES



CARIBBEAN, MEXICO, CENTRAL AMERICA PACIFIC COAST OF SOUTH AMERICA

Discover colorful, out-of-the-way ports along the historic Grace Line route. Easygoing Freighters accommodate up to 12 guests on a voyage, offering you relaxed shipboard life at its casual best. All staterooms are outside, each with private bathroom. There's a tiled outdoor pool and plenty of room for deck games or sun bathing. No need to dress for dinner, but the food is good and there's plenty of it.

Weekly sailings from New York to Haiti, through the Panama Canal to the Pacific Coast of South America. Cargo-passenger "Santas" sail approximately fortnightly from U.S. Pacific Coast ports to Mexico, Central and South America. Cruises last from two to four weeks.

Other Grace Line Informal Cruises:

CASUAL CRUISES to the Caribbean and South America. Sailings every Friday from New York to ports in the Dominican Republic, Venezuela and Colombia. 52-passenger "Santas." 17-19 days.

ALL-EXPENSE JEWEL BOX CASUAL CRUISE-TOURS. Departures every other Friday from New York to Panama, Colombia, Ecuador and Peru — with inland tours included in cruise fare. 52-passenger "Santas." 26 and 31 days.

'ROUND SOUTH AMERICA CRUISES. Departures every other Friday from New York. Pacific coast of South America cov-

ered by 52-passenger "Santas"; east coast by steamship or airline carriers regularly serving that area. 35 days up.

BRILLIANT NEW "SANTA" CRUISES. The *Santa Magdalena*, first of four new passenger-cargo liners, sails regularly from New York on 19-day cruises to the Caribbean, Panama, through the Canal and down the Pacific Coast of South America. She will be joined by the new *Santa Mariana* and *Santa Maria* later this year. The *Santa Mercedes* will go into service in early 1964. Accommodations limited to 125 passengers on each voyage.

See a Travel Agent

GRACE LINE

3 Hanover Square, New York 4, N. Y.

Agents and Offices in All Principal Cities

THE MOST FAMOUS NAME IN CARIBBEAN-SOUTH AMERICA CRUISES

Directory of Travel Agents Handling Freightler-Passenger Business

Information regarding reservations, tickets, passport requirements, health regulations, etc., may be obtained free upon request from travel agents listed in this directory. In addition to handling freighter-passenger business most of these travel agents are also authorized and bonded agents of the airlines, railways and passenger steamship lines and render a complete travel service. Tickets purchased from authorized travel agents cost no more than if purchased from the steamship company. The steamship companies pay travel agents a standard rate of commission for their services; their expert help and impartial travel advice is available to you free of cost. Besides making reservations and providing your tickets, a travel agent can help you in many other ways. He can plan your itinerary, arrange air or rail transportation to your port of embarkation, make hotel reservations within your price range, advise on clothing, money exchange, etc. When ready to make plans for your trip, visit or write to your nearest freighter travel agent. You'll be glad you did!

Listing in this directory is open to authorized travel agents
handling freighter-passenger business. Rates furnished upon request.

ARIZONA

PHOENIX

Margaret Chase Travel Service
112 N. Central Ave. Alpine 2-2737

Freightler-Passenger Travel Bureau
A DIVISION OF COLLINS-CLARE TRAVEL
4344 E. Indian School Rd. 264-5211

TEMPE

Universal Travel
Pauline M. Plencner
18 East 5th St. WO 7-1673

TUCSON

Holiday Travel Inc.
Carefree Travel Service
7051 N. Oracle Rd. CY 7-1572

CALIFORNIA

ANAHEIM

World Travel Bureau, Inc.
314 W. Lincoln Ave. Phone 774-8800

BERKELEY

Travel Service Inc.
2123 Addison St. THornwall 8-0300

BURBANK

Burbank Travel Bureau
152 E. Olive Ave.
Phones: TH 6-7504 and VI 9-2751

CORONA DEL MAR

C D M Travel Service
3542 East Coast H'way ORiale 3-0380

COSTA MESA

Trans Globe Travel Bureau
1880 Newport Blvd.
Phones: MI 6-5006 and KI 5-0522

COVINA

Holiday Travel Agency
Next to Bank of America—24 hr. service
139 E. Badillo Ave. ED 1-0666

ENCINITAS

Choice Travel Service
476 First (Hwy. 101) PL 3-6211

ENCINO

Carefree Travel Service
Encino's first travel agency
17620 Ventura Blvd. State 8-2710

GLENDALE

Chase Travel Service
224 So. Brand Blvd. Citrus 6-1661

HOLLYWOOD

Travelguide
"EXPERTS IN FREIGHTER TRAVEL"
6381 Hollywood Blvd. HO 6-1151

HUNTINGTON PARK

Carlisle Tours and Travel Service
2527 E. Florence Ave. Ludlow 5-2406

INDIO

Indio Travel Service, Inc.
45-401 Oasis St.
Phones: DI 7-0455 and FI 6-6010

LA CANADA

Lee Hansen Travel Service
712 Foothill Blvd.
Phones: SY 0-5589 and MU 1-4881

LA JOLLA

Carlson Travel Service, Inc.
7865 Ivanhoe Ave. Glencourt 4-0404

LONG BEACH

Willten Travel Agency
206 E. Ocean Blvd. HE 5-7411

TRAVEL AGENTS HANDLING FREIGHTER BUSINESS—Continued

LOS ANGELES

American-International Travel Service Inc.
3111 West 6th St. DUnkirk 2-6357

Eckdahl-Sundin Travel Bureau, Inc.
412 West 6th St. MAdison 6-4491

Operations, Unlimited
Customized Travel Service — Anywhere
7855 Melrose Ave. OLive 3-3700

Parnes Travel Bureau
At the start of the Miracle Mile
5200 1/2 Wilshire Blvd. WEbster 7-1710

Sadou Travel Agency
606 S. Hill St.—Suite 804
Phone MAdison 7-3504

Travel Center Inc.
649 So. Olive St. MAdison 7-4747

Travel Unlimited Inc.
2974 Wilshire Blvd. DUnkirk 5-4361

Westwind Travel & Tours
YOUR WEST L. A. TRAVEL CENTER
11753 Wilshire Blvd. GR 7-1289

MILL VALLEY

Marlin Travel Center
29 Miller Ave. Phone 388-8162

OAKLAND

Phillip Martin & Associates
2031 Franklin St. Phone 832-2426

Travelsmiths
3610 - 35th Ave.
Phones: 536-5732 and 534-5771

PALM DESERT

Airlansea Travel Service
World Wide Travel Service
45-104 Larkspur Lane
Phones FI 6-6966 and DI 7-1550

PALM SPRINGS

Olman Travel Service
139 S. Palm Canyon Phone 325-2756

PALOS VERDES ESTATES

Palos Verdes Travel Service
27 Malaga Cove Plaza FRontier 8-1223

PASADENA

Ardunn Travel
EXPERTS IN FREIGHTER TRAVEL
51 S. Madison Ave. SY 3-6415

Thos. Cook & Son, Inc.
172 S. Lake Ave.
Phones: SY 2-7168 and MU 1-5249

Davidson Travel Service
903 East Green St. SY 2-3177

POMONA

Pomona Travel Agency
Charlotte Davis, Owner
109 W. Center St. NA 9-8604

SACRAMENTO

E & J Travel Bureau
2936 Fulton Ave. IVanhoe 3-4621

SAN DIEGO

Elliot Travel Service
336 C St. BElmont 4-3257

SAN FRANCISCO

Paul Browne Associates—Travel
130 Maiden Lane YUkon 2-3072

Carton Travel Bureau, Inc.
377 Geary St. EX 7-5100

Andrew W. Larios, Inc.
Travel Service Everyway — Everywhere
133 Montgomery St. YUkon 2-7105

Mims Travel Center
133 O'Farrell St. YUkon 2-5867

Siemer & Hand, Ltd.
FREIGHTER EXPERTS and YACHT
CHARTERERS
465 California St. EXbrook 7-6737

SANTA BARBARA

Bill Brennan's Key Travel Service
WRITE TO P. O. BOX 3277 FOR FREE
FREIGHTER LISTINGS—ALL ROUTES.
2829 De la Vina St. Phone 966-3810

SANTA MONICA

Jellison Travel Service, Inc.
1416 Wilshire Blvd.
Phones: UPlon 0-5659 and 393-7288

Santa Monica Travel Service
SPECIALISTS IN FREIGHTER TRAVEL
201 Santa Monica Blvd. EX 4-3271

COLORADO

DENVER

Carl Steele World Wide Travel Service, Inc.
1660 Champa St., P.O. Box 900
Denver 1 ALpine 5-0351

Kay Stewart Travel, Inc.
Member, American Society of
Travel Agents
518-17th St. AComa 2-2511

ENGLEWOOD

All Travel, Inc.
65 W. Girard Ave. SUNset 9-2505

GRAND JUNCTION

Mesa Travel Service
La Court Hotel Lobby CH 2-9925

TRAVEL AGENTS HANDLING FREIGHTER BUSINESS—Continued

CONNECTICUT

HARTFORD

Rose Taksar Travel Service
18 Asylum St. Phone 527-0756

NEW CANAAN

The Ross Agency, Inc.
53 Elm St. Woodward 6-9587
New York wire: CYPRESS 2-1209

NEW HAVEN

Graham Travel Company
109 Church St. Spruce 7-5431

SOUTH NORWALK

The Rowleson Agency, Inc.
34 N. Main St. Temple 8-0613

DISTRICT OF COLUMBIA

WASHINGTON

Travel Consultants, Inc.
1612 K St., N.W. DI 7-9228

FLORIDA

BOCA RATON

Boca Raton Travel Agency
700 E. Palmeto Park Rd. 395-1414

FORT LAUDERDALE

Hart Travel Agency
307 S. Atlantic Blvd. JA 5-2822
Miami phone: WI 5-8282

E. A. McQuade Travel Agency, Inc.
2216 E. Oakland Park Blvd. LO 6-3254

Olwell Travel Service
231 S.E. 1st Ave. Jackson 2-0687

HOLLYWOOD

Hollywood Travel
1845 Hollywood Blvd.
Phones: WI 7-0646 and WA 2-3531

MELBOURNE

Joline's Travel Bureau, Inc.
408 Strawbridge Parkway 3-3321
Also Cocoa, Cocoa Beach and Titusville

NORTH MIAMI

American World Travel
Accurate Rates—Reservations Anywhere
12777 W. Dixie Hwy. PL 1-0591

ST. PETERSBURG

Gulf Beach Travel Service
13060 Gulf Blvd.—Madelira Beach
Phone 391-9944

GEORGIA

COLUMBUS

Columbus Travel Bureau Inc.
211-12th St. FAirfax 7-4356

ILLINOIS

ALTON

ITA Travel Advisors
413 E. Broadway HOWard 5-2558

CHICAGO

Corydon Travel Bureau, Inc.
FOR OVER A QUARTER CENTURY
Representatives throughout the world.
Board of Trade Building—Lobby
141 W. Jackson Blvd. WA 2-2090

Lolita Linn Travel Service, Inc.
Specialists in Freighter Travel
221 N. La Salle St. RAndolph 6-8425

Pleasure Tours
20 S. Dearborn St. ANdover 3-0761

Travel Exchange, Inc.
Personalized World-Wide Travel Service
110 S. Dearborn St. RA 6-4417

INDIANA

INDIANAPOLIS

American Fletcher National Bank &
Trust Co., Foreign & Travel Dept.
108 N. Pennsylvania St. ME 9-6611

PORTLAND

The Citizens Bank of Portland
Travel Department
112 W. Main St. Phone 726-7116

IOWA

DES MOINES

Stark Travel Service, Inc.
At Younkers CH 4-9462

KANSAS

DIGHTON

Allen Travel Agency, Inc.
ACROSS THE STREET OR AROUND THE
WORLD
136 E. Long St. Phone 397-3332

LOUISIANA

NEW ORLEANS

All Travel Agency, Inc.
736 Audubon Building
931 Canal Street Phone 522-5733

TRAVEL AGENTS HANDLING FREIGHTER BUSINESS—Continued

MAINE

PORTLAND

Portland Tourist Co.
142 High St. 5Pruce 3-6761

MARYLAND

HAGERSTOWN

Vic Miller Travel Agency
LOOK AHEAD—BOOK AHEAD
ANYWHERE
43 Summit Ave. Phone 739-2200

MASSACHUSETTS

QUINCY

Carlson Travel Service
Division of Regal Travel Corp.
8 Depot St. GRanite 2-0051

SPRINGFIELD

Central Travel Bureau
191 Worthington St. RE 6-7255

MICHIGAN

ANN ARBOR

Hodges Travel Agency
2333 W. Stadium Blvd. Phone 66-32479

BIRMINGHAM

Birmingham Travel Service, Inc.
379 Hamilton Ave. MI 4-5711

DETROIT

Paul Henry Travel Service, Inc.
"36 YEARS OF DEPENDABLE SERVICE"
Washington Blvd. Bldg. WO 1-7075

World Wide Travel Bureau, Inc.
Established 1926
SPECIALISTS IN FREIGHTER TRAVEL
320 Farwell Bldg.
1249 Griswold St. WO 2-3368

FLINT

Michigan Travel Service, Inc.
Durant Hotel CE 8-1601

Wanderland Travel Service
333 So. Saginaw St. CE 2-0191

LANSING

Vreeland Travel Service
209 E. Michigan IV 2-0849

MINNESOTA

MINNEAPOLIS

Vanstrum Travel Service, Inc.
WORLD WIDE SERVICE SINCE 1894
1010 First Nat'l Bank Bldg. FE 2-7567

MISSOURI

COLUMBIA

Elizabeth F. Cooper Travel Service
909 University Ave. Gibson 3-3859

MONTANA

BILLINGS

Wilcox Travel Service
2814 Third Ave. N. Phone 252-0581

NEBRASKA

OMAHA

Travel & Transport, Inc.
629 First National Bank Bldg.
Phone 344-4877

NEW HAMPSHIRE

HANOVER

Dartmouth Travel Bureau
Bank Bldg. Phone 643-2121
(Area Code 603)

NEW JERSEY

BAYONNE

Pengad Travel Agency
1011 Broadway Phone HEMlock 7-3900
New York phone: WOrth 4-7419

EAST ORANGE

Travel Incorporated
555 Main St. ORange 2-7200

FLEMINGTON

Hunterdon Travel Inc.
Worldwide Travel Service
57 Main St. STate 2-5518

PASSAIC

Roma Travel Service
635 Main Ave. PR 7-2222

PLAINFIELD

Caroli Travel, Inc.
200 W. 7th St. PLainfield 6-2613

RED BANK

Allen Petersen Travel Service
36 Harding Rd. SH 1-5550

RIDGEWOOD

Travel Incorporated
250 E. Ridgewood Ave. GI 5-4444

SPARTA

Mohawk Travel Bureau, Inc.
On the Plaza PA 9-6147
Branch: Dover, N. J.
63 E. Blackwell St. FO 6-3700

TRAVEL AGENTS HANDLING FREIGHTER BUSINESS—Continued

WESTFIELD

Travelong of Westfield, Inc.
252 East Broad St. ADams 3-2300

NEW YORK

BINGHAMTON

Southern New York Automobile Club, Inc.
67 Washington St. RA 2-7255

BUFFALO

Johnson Travel
620 Lafayette Ave. TT 6-7478

FRANKLIN SQUARE

Tourist's Guide Travel Bureau
1149 Hempstead Turnpike
Floral Pk 4-6014

FREERPORT

Hershy Travel Agency
Hershy Bldg.
35A So. Grove St. FREerport 8-5300

LYNBROOK

Herron-Rogers Travel Service
Authorized Agents—Members ASTA
Meadow Brook Natl. Bk. Bldg. LY 3-3700

NEW YORK CITY

Atlantic Exchange Ltd.
Specialists in Freighter Reservations
Individuals-Couples-Children-Groups
1345 Third Ave. at 77th St. TR 9-2929

Wm. Becker Travel Bureau, Inc.
"Serving the Traveler Since 1911"
60 E. 42nd St. AL 4-9775

Di Carlo Travel Bureau
1440 Broadway OX 5-7570

Embassy Tours, Inc.
"A GREAT NAME IN TRAVEL"
147 W. 42nd St. (Broadway) OX 5-2121

MacPherson Travel Bureau, Inc.
41 E. 42nd St. TN 7-4600

Penthouse Travel Center, Inc.
501 Fifth Ave. MURray Hill 2-0333

Tramp Trips, Inc.
353 W. 57th St. PL 7-5900

PATCHOGUE

South Shore Travel Bureau
60 W. Main St. GRover 5-0685

ROCHESTER

Automobile Club of Rochester
World Wide Travel Service
190 Chestnut St. BAKER 5-2210

Grinnell's Kalbfleisch Travel Agency
233 Midtown Plaza BAKER 5-5440

Sargent Travel Agency, Inc.
Manger Hotel Arcade BAKER 5-7700

NORTH CAROLINA

GREENSBORO

Universal Travel Service, Inc.
103 S. Davie Phone 299-4977

NORTH DAKOTA

FARGO

World-Wide Travel Dept.
North Dakota Automobile Club
18 So. 8th St. AD 2-7441

OHIO

CINCINNATI

Provident Travel Service
The Provident Bank
7th and Vine Sts. CHerry 1-6111

COLUMBUS

Richard Lewis Travel Service
142 E. Gay St., at Fourth 221-6577
Battelle Institute office 299-9300
F. & R. Lazarus office 221-2121
Ohio State University office 293-2951

OREGON

ONTARIO

Isari Travel Agency
P. O. Box 89 Phone 889-6488

PORTLAND

The Robert Powell Travel Service
Benson Hotel
309 S.W. Broadway CA 3-7331

Dorothy Van Nuys Travel Service, Inc.
802 Cascade Building Phone 226-6133

PENNSYLVANIA

BETHLEHEM

The Gasztonyi Travel Bureau
503 Main St. Phone 867-5511

HARRISBURG

Royal Travel Service
222 Locust St. CEDar 3-4578
Branch: Penn State Travel
State College, Pa. ADams 8-0528

LATROBE

Mary Lee Travel Agency
809½ Ligonier St. KEYstone 7-3301

PHILADELPHIA

Kushner Travel Agency
6713 Castor Ave. PI 2-3600

Royal Travel Service of Philadelphia, Inc.
2473 N. 54th St.
Phones: TR 8-8700 and MO 4-8300

TRAVEL AGENTS HANDLING FREIGHTER BUSINESS—Continued

PHILADELPHIA—Continued

Talmage Tours, Inc.
Benj. Franklin Hotel WAInut 2-8765

SHARON

McDowell National Bank
Travel Bureau
58 E. State St. Phone 981-1411

TEXAS

SAN ANTONIO

Bodet Steamship & Travel Agency
Alamo National Bldg. CApitol 7-6263
McNeal Travel Agency
402 East Martin St. CApitol 6-2383

VERMONT

SWANTON

Touraid Travel Service
"SEE THE AGENT WHO HAS BEEN
THERE"
23 Lake St. UN 8-3306

WASHINGTON

SEATTLE

Art Allen Travel Service
FREIGHTER TRAVEL SPECIALISTS
2027 N.W. Market St. SU 3-8300

Cook's Travel Service
WORLD'S LARGEST TRAVEL AGENCY
410 Union St. MAIn 3-8483

Holiday House, Inc.
ASK US—WE'VE BEEN THERE
916 E. John St. EAst 2-3510

Trans-Globe Travel
FREIGHTER SPECIALISTS
1736 N.W. Market St. SU 4-2760

Fay Wilson Travel Service
Seattle's Smartest Travel Service
8001 15th Avenue N.W. SU 2-9222

SPOKANE

Broberg Travel Service
W. 901 Sprague Ave. WA 4-5881

WEST VIRGINIA

WHEELING

Wheeling Auto Club
International Travel Dept.
836 Market St. CE 3-1810

WISCONSIN

MADISON

Travel/ease
The Complete Travel Service
656 State St. ALpine 7-3835

MILWAUKEE

Bancroft Travel Service Inc.
757 No. Broadway BRoadway 1-7757

CANADA

CALGARY

P. Lawson Travel Ltd.
119 Seventh Avenue West, Calgary
10168 102nd Street, Edmonton
247 Notre Dame Ave., Winnipeg

MONTREAL

Freighter Cruise Service
SPECIALISTS IN FREIGHTER TRAVEL
1223 Greene Ave. WE 7-1340

Tabins Travel Limited
Cathcart Bldg.
Place Ville Marie UN 6-7811

VANCOUVER

Thos. Cook & Son
World's Leading Travel Firm Since 1841
563 Granville St. MU 4-1277

Drainis Travel Agency Limited
FREE PERSONALIZED SERVICE
840 Dunsmuir St. MUTual 3-5878



PORTS OF CALL INDEX

This index shows freighter-passenger ship services to principal world seaports. To locate services between any two ports, look for names of steamship lines which are common to BOTH ports.

NUMERALS SHOW LISTING NUMBERS

A	Listing No.		Listing No.
ABADAN, Iran		ANTWERP, Belgium	
Nedlloyd Line	54	Barber Fern-Ville Lines	71-139
ABIDJAN, Ivory Coast, W. Africa		Belgian Line	31
Barber-West Africa Line	84	Black Diamond Line	29
Black Star Line	81-111A	Fred Olsen Line	159
Chargeurs Reunis	85A	French Line	156
Delta Line	111	Hamburg-American Line	25B-154-169
Elder Dempster Lines	88	Hamburg-Chicago Line	167
Farrell Lines	83	Holland-America Line	101-157
ACAPULCO, Mexico		Interocean Line	155
Grace Line	147	Johnson Line	151
ACCRA, West Africa		Lykes Lines	100
Elder Dempster Lines	88	Meyer Line	30
Chargeurs Reunis	85A	North German Lloyd	169
Farrell Lines	83	Ocean-Stinnes Lines	26-104
ADELAIDE, Australia		Poseidon Lines	25
Columbus Line	145A-145B	Red Star Line	29A
Pacific Australia Direct Line	146	Swedish American Line-Wilhelmsen Line (joint service)	103A
ADEN, Aden Colony (Arabia)		Waterman Line	103
Barber Fern-Ville Lines	71-139	Wilhelmsen Lines	71-139
Concordia Line	45	APAPA, West Africa	
Wilhelmsen Lines	71-139	Chargeurs Reunis	85A
ALEXANDRIA, Egypt		Farrell Lines	83
American Export Lines	43	APIA, Western Samoa	
American President Lines	73-128	Pacific Islands Transport Line	144
Concordia Line	44	AQUABA, Jordan	
Hoegh Line	48	Hansa Line	44B
Isbrandtsen Company, Inc.	46	Nedlloyd Line	47B-171
Isthmian Lines	78	ARICA (IQUIQUE), Chile	
Lykes Lines	108	Grace Line	147
Scindia Line	77	Gulf & So. American SS Co.	99
AL KUWAIT, Kuwait		Westfal-Larsen Line	149
(see KUWAIT)		ARUBA, Neth. West Indies	
ALLEPPEY, India		Alcoa Steamship Co.	96
Isthmian Lines	68-112	Moore-McCormack Lines	59
AMSTERDAM, Holland		Nedlloyd Line-Africa Service	162
Hamburg-American Line	154	Royal Netherlands S.S. Co.	16-96
Independent Gulf Line	102	ASSAB, Eritrea	
ANGRA DES REIS, Brazil		Concordia Line	45
Columbus Line, Inc.	56	AUCKLAND, New Zealand	
ANTIGUA, Br. West Indies		American-Australian Line	67
Booth Steamship Co., Ltd.	11-58A	Oceanic Steamship Co.	145
Saguenay Shipping Limited	12	Port Line	66A
ANTOFAGASTA, Chile		Tasman Pacific Service	143A
Grace Line	16B-18-147	Union SS Co. of N. Z.	143
Gulf & So. American SS Co.	99	AVONMOUTH, England	
Westfal-Larsen Line	149	Saguenay Shipping Limited	22

PORTS OF CALL INDEX—Continued

	Listing No.		Listing No.
AZORES ISLANDS			
Azores Steamship Line	41	Isthmian Lines	68-142
B			
BAHIA, Brazil (See Sao Salvador)			
BAHREIN, Bahrain Island			
Concordia Line	45	Java Pacific & Hoegh Line	131
Hansa Line	44B	Pacific Far East Line	141
Nedlloyd Line	54	States Line	127
BALBOA (see Panama Canal)			
BALTIMORE, Md., U.S.A.			
Alcoa Steamship Company	6-7	BARBADOS, Br. West Indies	
Bull Lines	13	Alcoa Steamship Co.	96
Manchester Liners, Ltd.	20A	Booth Steamship Co., Ltd.	11
Moore-McCormack Lines	59	Saguenay Shipping Limited	12
BANDAR SHAHPOUR, Iran			
Concordia Line	45	BARCELONA, Spain	
Hansa Line	44B	American Export Lines	43
Isthmian Lines	44A	American President Lines	73-128
BANGKOK, Thailand			
American Mail Line	133	Italian Line	161
American President Lines	74-128-130	Lykes Lines	42-108
Barber Line	71-139	Nervion Line	109
Fern-Ville Far East Lines	113	Waterman Line	107
BARRANQUILLA, Colombia			
Grace Line			
Lykes Lines			
BASRA, Iraq			
Concordia Line			
Hansa Line			
Hellenic Lines Limited			
Isthmian Lines			
Java Pacific & Hoegh Line			
Nedlloyd Line			

Deluxe**One Class**

Regular Sailings from

New York to Cape Town

Relax in informal luxury all the way
aboard modern ships unique in South African service.
Air conditioned throughout.

All cabins are located on the boat deck and are outside,
with private shower or bath and shower.

Attractive lounge, service bar, deck chairs, and refreshments.

"Safmarine"

See Listing No. 87
for complete details



Consult your travel agent or

South African Marine Corporation (N.Y.)

Two Broadway • Digby 4-8940 • New York 4, N.Y.

PORTS OF CALL INDEX—Continued

	Listing No.		Listing No.
BASSETERRE (See St. Kitts, B.W.I.)		BELEM, Brazil	
BEIRA, Portuguese East Africa		Booth Steamship Co., Ltd.	11-58A
Christensen Canadian African Lines	82	Moore-McCormack Lines	59
Farrell Lines	83	BELFAST, Ireland	
Lykes Lines	110	Head Line and Lord Line	20
Nedlloyd Line-Africa Service	162	BERGEN, Norway	
Robin Line	86	Moore-McCormack Lines	32
		Norwegian American Line	34
BEIRUT, Lebanon		BERMUDA, West Indies	
American Export Lines	43	Saguenay Shipping Limited	12
Concordia Line	44	BILBOA, Spain	
Hansa Line	44B	Barber Fern-Ville Lines	71-139
Isthmian Lines	78	Wilhelmsen Lines	71-139
Isbrandtsen Company, Inc.	46	BLUFF, New Zealand	
Lykes Lines	108	Tasman Pacific Service	143A
Nedlloyd Line	47B-54-171	BOMBAY, India	
BELAWAN DELI, Sumatra		American Export Lines	43
American President Lines	74-130	American Mail Line	133
Barber Fern-Ville Lines	71-139	American President Lines	73-128
Hoegh Line	48	Hellenic Lines Limited	78A
Isthmian Lines	68-142	Hoegh Line	48
Klaveness Line	135	Isbrandtsen Company, Inc.	46
Wilhelmsen Lines	71-139	Isthmian Lines	78



FAR AWAY PLACES WITH STRANGE SOUNDING NAMES Are AMERICAN MAIL LINE Ports of Call!

American Mail Line's three new 20-knot Mariner Class Cargo-liners feature modern, fully-air-conditioned accommodations for 12 passengers, including pleasant staterooms, dining salon and spacious passenger lounge. They sail from the Northwest to the Far East. Round trip cruise, approximately 52 days, \$927 to \$990. One way trips available. Also frequent scheduled sailings aboard C-3 type cargo-liners to the Orient at \$788 round trip, and to Southeast Asia and India at \$1,098 round trip.



So if you would like to visit such intriguing ports as Hong Kong, Yokohama, Chittagong, Singapore, Calcutta, Djakarta, Kobe, Manila, Penang or Zamboanga . . . call your nearest American Mail Line office or your Travel Agent.

AMERICAN MAIL LINE 1010 Washington Bldg.
Seattle 1, Washington
Offices in major U.S. and Canadian cities

PORTS OF CALL INDEX—Continued



3 Sailings
a week
to the Caribbean and
South America

Only Alcoa offers you such variety in selecting a Caribbean cruise:

SHIPS. Your choice of ore carriers or several types of freighters—each with modern, comfortable accommodations for up to 12 passengers. All rooms are outside with private baths. Some ships have de luxe owners' suites and some are air-conditioned.

ITINERARIES. Your choice of 11- to 30-day cruises with a wide selection of ports, including: Puerto Rico, the Virgin Islands, Venezuela, Aruba, Curacao, Jamaica, Dominican Republic, Trinidad, Barbados, and Surinam.

DEPARTURES. Your choice of sailings any week from New York, Baltimore, Philadelphia, New Orleans or Mobile.

Alcoa, with weekly sailings, wide variety of itineraries and 40 years of experience, is your best bet for a Caribbean freighter cruise. See listings 6, 7B and 96 for details. Your travel agent can give you literature and availabilities, or write:

ALCOA
ALCOA STEAMSHIP COMPANY, INC.
17 Battery Place, New York 4, N.Y.

Listing No.

Java Pacific & Hoegh Lines	131
Nedlloyd Line	54-77A
Scindia Line	77

BOSTON, Mass., U.S.A.

American Pioneer Line	66
Barber Fern-Ville Lines	71-139
Hoegh Line	48
Wilhelmsen Lines	71-139

BREMEN, Germany

Hamburg-American Line	25B-28-104-154-169
Hamburg-Chicago Line	167
Hanseatic Line	150
Lykes Lines	100
Ocean-Stinnes Lines	26-150
Swedish American-Wilhelmsen Line (joint service)	33-103A
Waterman Line	103

BREMERHAVEN, Germany

United States Lines	23
---------------------	----

BRIDGETOWN (See Barbados, B.W.I.)

BRISBANE, Australia

American Australian Line	67
Columbus Line	145B
Port Line	66A

BROWNSVILLE, Texas, U.S.A.

Swedish American Line-Wilhelmsen Line (joint service)	103A
---	------

BUENAVENTURA, Colombia

Grace Line	16B-18-147
Gulf & So. American SS Co.	99
Nedlloyd Line	77A
Westfal-Larsen Co., Inc.	149

BUENOS AIRES, Argentina

Argentine State Line	63
Columbus Line, Inc.	56
Delta Line	97
Ivaran Line	60
Moore-McCormack Lines	59-148
Nopal Line	97A
Norton Line	57
Torm Lines	61
Westfal-Larsen Line	149

C

CABEDELLO, Brazil

Booth Line	58A
------------	-----

CADIZ, Spain

American Export Lines	43
Lykes Lines	108

CALCUTTA, India

American Export Lines	43
American Mail Line	133

PORTS OF CALL INDEX—Continued

	Listing No.
Hellenic Lines Limited.....	78A
Hoegh Line.....	48
Java Pacific & Hoegh Lines.....	131
Nedlloyd Line India Service.....	77A
CALLAO, Peru	
Chilean Line.....	99A
Grace Line.....	16B-18-147
Gulf & So. American SS Co.....	99
Moore-McCormack Lines.....	148
Nedlloyd Line.....	77A
Westfal-Larsen Line.....	149
CANARY ISLANDS	
Concordia Line.....	44
CAP HAITIEN, Haiti	
Royal Netherlands SS Co.....	16
CAPE PALMAS, Liberia	
Elder Dempster Lines.....	88
CAPETOWN, South Africa	
Christensen Canadian African Lines.....	82
Farrell Lines.....	83
Lykes Lines.....	110
Nedlloyd Line-Africa Service.....	162
Robin Line.....	86
South African Marine Corp (N.Y.).....	87
CARACAS, Venezuela (See La Guaira)	
CARTAGENA, Colombia	
Grace Line.....	16A
Lykes Line.....	91
Moore-McCormack Lines.....	148
Nedlloyd Line.....	77A
CARUPANO, Venezuela	
Royal Netherlands SS Co.....	96A
CASABLANCA, Morocco	
Concordia Lines.....	44
Lykes Lines.....	42-108
Yugoslav Line.....	50
CASTRIES (See St. Lucia, B.W.I.)	
CEBU, Philippine Islands	
American Mail Line.....	133
American President Lines.....	130
Klaveness Line.....	135
Pacific Far East Line.....	141
CHAGUARAMAS (See Trinidad, B.W.I.)	
CHALNA, East Pakistan	
Java Pacific & Hoegh Line.....	131
CHANARAL, Chile	
Grace Line.....	16B-18-147
CHARLESTON, S.C., U.S.A.	
American Pioneer Line.....	66
Barber Line.....	5
Lykes Lines.....	42



PHILIPPINES • HONG KONG • JAPAN

Guam • Okinawa • Formosa • Korea

You will enjoy a new travel experience sailing to the Orient on the new deluxe Pacific Far East Line Mariner vessels, or on the more economical standard cargo liners.

Fine accommodations...Excellent cuisine. About six leisurely weeks with ample time for sight-seeing and shopping, whether in the great city ports of the East or in the lesser outposts where life is still primitive and unspoiled. In port your ship is your hotel.

You will enjoy every minute!

Round trips on the deluxe Mariners as low as \$958.50. For other rates see Listing #141 in this publication. For further information see your favorite travel agent or . . .

*Pacific
Far East Line, Inc.*

311 California Street • San Francisco, Calif.
Offices and Agents throughout the World

PORTS OF CALL INDEX—Continued

Sail on a Dutch Flag Ship

Be assured of comfort, good food, courteous service and competent seamanship when you plan your freighter trip to Europe or to fascinating out-of-the-way ports of the world. Dutch freighter travel opens up new travel vistas, and makes available through one source the combined facilities of sixteen steamship lines comprising some 315 vessels of over two million gross tonnage with accommodations for 11,500 passengers.

Holland-America Line FREIGHTER-PASSENGER SERVICES

*RED STAR LINE

Frequently from New York direct to Antwerp or Rotterdam in modern one-class ships, featuring outside accommodations with private facilities.

*HOLLAND-AMERICA LINE NORTH PACIFIC COAST SERVICE

Regularly from Vancouver, San Francisco and Los Angeles Harbor to Antwerp, London and Rotterdam, via the Panama Canal in first class accommodations. For reservations, apply Holland-America Line, 457 Post Street, San Francisco 3, California.

*HOLLAND-AMERICA LINE MEXICO, GULF SERVICE

Regularly from Mexico and Gulf ports to London, Antwerp and Rotterdam in one-class accommodations. For reservations, apply Holland-America Line, 625 Whitney Building, New Orleans 12, Louisiana.

DUTCH WORLD SERVICES

*NEDERLAND LINE

***ROYAL ROTTERDAM LLOYD**
U.S.A. and Europe to: Mediterranean—Near East
Far East—New Guinea—Australia—New Zealand
Around-the-World—Africa—Persian Gulf
India—Pakistan

*ROYAL INTEROCEAN LINES

Japan—Hong Kong—Singapore/Malaya—
South Africa—Brazil—Uruguay—Argentina.
Melbourne—Sydney—Brisbane
Japan—Hong Kong—East Australia.
Australia—Singapore—Ceylon—India.
West-South-East Africa—Australia—New Zealand

ROYAL NETHERLANDS STEAMSHIP CO.
W. S. Atlantic and Gulf ports to: The Caribbean
Europe to: The Caribbean

Pacific Coast ports of Central and South America

ROTTERDAM—SOUTH AMERICA LINE
Europe to: Brazil—Uruguay—Argentina

***UNITED NETHERLANDS
NAVIGATION CO., LTD.**
Europe to: South and East Africa—Near East
Australia—Persian Gulf—Pakistan—India—Ceylon
Burma—Malaya—Thailand—Philippines
Hong Kong—China—Japan

*Members of Interchange Lines

For full information, apply to your travel agent or

Holland-America Line

Offices and Agencies in Principal World Cities and Ports

Listing No.

Manchester Liners.....	20A
Ocean-Stinnes Lines.....	26
Royal Netherlands SS Co.....	16
CHERBOURG, France	
United States Lines.....	23
CHITTAGONG, Pakistan	
American Mail Line.....	133
Hellenic Lines Limited.....	78A
Java Pacific & Hoegh Lines.....	131
CHICAGO, Ill., U.S.A.	
Furness Great Lakes Line.....	168
Hamburg-American Line.....	169
Hamburg-Chicago Line.....	167
North German Lloyd.....	169
Nedlloyd Line.....	47B-171
Oranje Line.....	27-165
Yugoslav Great Lakes Line.....	170
Zim Israel Navigation Co.....	166
CHRISTCHURCH, New Zealand	
Port Line.....	66A
CIUDAD BOLIVAR	
Royal Netherlands S.S. Co.....	16
CLEVELAND, Ohio, U.S.A.	
Hamburg-American Line.....	169
North German Lloyd.....	169
Saguenay Shipping Ltd.....	164
COCHIN, India	
American Mail Line.....	133
American President Lines.....	73-128
Hoegh Line.....	48
Isthmian Lines.....	68-142
COLOMBO, Ceylon	
American Mail Line.....	133
American President Lines.....	73-128
Barber Fern-Ville Lines.....	71-139
Hellenic Lines Limited.....	78A
Hoegh Line.....	48
Java Pacific & Hoegh Lines.....	131
Wilhelmsen Lines.....	71-139
CONAKRY, West Africa	
Chargeurs Reunis.....	85A
Delta Line.....	111
COOS BAY, Oregon, U.S.A.	
Columbus Line.....	145A
COPENHAGEN, Denmark	
Barber Fern-Ville Lines.....	71-139
East Asiatic Line.....	160
Moore-McCormack Lines.....	32
Norwegian America Line.....	34
Scandinavian American Line.....	35
Wilhelmsen Lines.....	71-139
CORINTO, Nicaragua	
Grace Line.....	147

PORTS OF CALL INDEX—Continued

	Listing No.		Listing No.
CRISTOBAL, Canal Zone (see Panama Canal)		DAMMAM, Saudi Arabia	
CURACAO, Netherlands, W.I.		Concordia Line.....	45
Alcoa Steamship Company.....	96	Hansa Line.....	44B
Delta Line.....	87	Hellenic Lines Limited.....	52
Fred. Olsen Line.....	159	Isthmian Lines.....	44A
French Line.....	156	DAR-ES-SALAAM, Tanganyika, E. Africa	
Hanseatic Line.....	150	Christensen Canadian African	
Hamburg-American Line.....	154	Lines.....	82
Italian Line.....	161	Farrell Lines.....	83
Johnson Line.....	151	Lykes Lines.....	110
Moore-McCormack Lines.....	59	Nedlloyd Line-Africa Service.....	162
Royal Netherlands S.S. Co.....	16-96A	Robin Line.....	86
CYPRUS, Island, Mediterranean Sea		DAVAO, Philippine Islands	
American Export Lines.....	43	Pacific Far East Line.....	141
D		DERINCE, Turkey	
DAKAR, Senegal, West Africa		American Export Lines.....	43
Barber-West Africa Line.....	84	DETROIT, Mich., U.S.A.	
Black Star Line.....	81-111A	Hamburg-American Line.....	169
Delta Line.....	111	Hamburg-Chicago Line.....	167
Elder Dempster Lines.....	88	North German Lloyd.....	169
Farrell Lines.....	83	Saguenay Shipping Ltd.....	164
		Zim Israel Navigation Co.....	166



**FREIGHTER VOYAGES
TO THE ORIENT • PANAMA CANAL
CARIBBEAN PORTS
AND AROUND THE WORLD**

Modern Norwegian Freighters

A fleet of more than 30 ships in combined services assures world travelers of regular sailings, dependable schedules.

**Frequent departures from San Francisco and Los Angeles
For details see Listings Nos. 116a, 118, 126, 135 and 139**

OVERSEAS SHIPPING COMPANY

Main Office: 310 Sansome Street, San Francisco 4, California
Branch Offices in Los Angeles, Portland and Seattle

PORTS OF CALL INDEX—Continued

	Listing No.		Listing No.
DEVONPORT, Australia		DOUALA, Cameroons, W. Africa	
Columbus Line.....	145B	Chargeurs Reunis.....	85A
DJAKARTA, Indonesia		Delta Line.....	111
American Mail Line.....	133	Elder Dempster Lines.....	88
American President Lines.....	74-76-130	Farrell Lines.....	83
Barber Line.....	71-139	DUBLIN, Ireland	
Fern-Ville Far East Lines.....	113-126	East Asiatic Line.....	160
Isthmian Lines.....	68-142	DUNEDIN, New Zealand	
Klaveness Line.....	135	Port Line.....	66A
Lykes Lines.....	114	Tasman Pacific Service.....	143A
DJIBOUTI, French Somaliland		DURBAN, South Africa	
American Export Lines.....	43	Christensen Canadian African	
Concordia Line.....	45	Lines.....	82
Hoegh Line.....	48	Farrell Lines.....	83
Isbrandtsen Company, Inc.....	46	Lykes Lines.....	110
Isthmian Lines.....	44A	Nedlloyd Line-Africa Service.....	162
		Robin Line.....	86
DOMINICA, Br. West Indies		E	
Booth Steamship Co.....	11	EAST LONDON, South Africa	
Saguenay Shipping Limited.....	12	Christensen Canadian African	
DOMINICAN REPUBLIC, West Indies		Lines.....	82
Alcoa Steamship Co.....	96	Farrell Lines.....	83
Lykes Lines.....	91	Lykes Lines.....	110
Saguenay Shipping Limited.....	12	Nedlloyd Line-Africa Service.....	162
		Robin Line.....	86

**EUROPE • THE MEDITERRANEAN • AFRICA
THE ORIENT • THE CARIBBEAN**



American Flag Standards

MAKE A WORLD OF DIFFERENCE!

LYKES can take you almost anywhere in the world ... in delightful passenger accommodations aboard modern cargoliners. Relax, dress as you please, enjoy delicious food. The Captain is your host. Being American Flag ships, your own language is spoken by ships' officers glad to show you America's world commerce in action. Lykes ships sail from NEW ORLEANS and other U. S. GULF PORTS.

Write Dept. 61, Lykes Bros. Steamship Co., Inc., New Orleans, La., for literature and further information. Please specify world destinations you are interested in.

Lykes

LINES



PORTS OF CALL INDEX—Continued

	Listing No.		Listing No.
ESPIRITU SANTO, New Hebrides Isl. Pacific Islands Transport Line.....	144	Swedish American Line and Wilhelmsen Line (joint service).....	103A
F			
FORMOSA (See Keelung)		GDYNIA, Poland Moore-McCormack Lines.....	32
FORTALEZA, Brazil Booth Steamship Co.....	58A	GENOA, Italy American Export Lines.....	43
FREETOWN, Sierra Leone, W. Africa Barber-West African Line.....	84	American President Lines.....	73-128
Black Star Line.....	81-111A	Barber Fern-Ville Lines.....	71-139
Elder Dempster Lines.....	88	Concordia Line.....	44-45
Farrell Lines.....	83	Costa Line.....	53
FREMANTLE, West Australia Knutsen Line.....	134	d'Amico Line.....	160A
		Hellenic Lines.....	49
G			
GALVESTON, Texas, U.S.A. Hamburg-American Line.....	104	Isbrandtsen Company, Inc.....	46
Lykes Lines.....	91-93-100-108-114	Italian Line.....	161
Nervion Line.....	109	Lykes Lines.....	42-108
Sabre Line.....	112	Sidarma Line.....	102A
		Wilhelmsen Lines.....	71-139
		Yugoslav Great Lakes Line.....	170
		Yugoslav Line.....	50
		GEORGETOWN, British Guiana Booth Steamship Co., Ltd.....	11
		Royal Netherlands SS Co.....	16
		Saguenay Shipping Limited.....	12



casual and comfortable travel...

to South America and Scandinavia

For the traveler who has leisure time and does not wish to spend a great deal of money, Mooremack's American Republics and Pacific Republics and American Scantic Lines offer wonderful holidays at sea, exciting days and nights in interesting ports.

These cargo liners travel from Atlantic Coast ports of North America to the East Coast of South America or Scandinavia... from Pacific Coast Ports of North America around South America.

Itineraries are flexible and schedules vary.

All the ships are modern and fast.

All rooms are airy and comfortable and each has its own shower and toilet. Each ship has a combination lounge-dining salon, plenty of deck space for games and resting. Most ships provide an outdoor pool.

For a true ocean holiday on one of these friendly liners, see your Travel Agent or...

MOORE-McCORMACK

Two Broadway *Lines* New York 4, N.Y.

PORTS OF CALL INDEX—Continued

	Listing No.		Listing No.
GOLFITO, Costa Rica		Lykes Lines	91
United Fruit Company	9-116	Moore-McCormack Lines	148
		Royal Netherlands SS Co.	16-96A
GOTHENBURG, Sweden		CUAYAQUIL, Ecuador	
American Scantic Line	32	Grace Line	16B-18
Johnson Line	151	Gulf & So. American SS Co.	99
Moore-McCormack Lines	32	Nedlloyd Lines	77A
Swedish American Lines, Ltd.	37	Standard Fruit & SS Co.	17A-93
Swedish American-Wilhelmsen		United Fruit Co.	92
Line (joint service)	33-103A	Westfal-Larsen Co. Line	149
Swedish Transatlantic Line	37		
Thorden Lines	36		
GRANGEMOUTH, Scotland		H	
Cairn-Thompson Line	22B	HAIFA, Israel	
GRENADA, British W. Indies		American Export Lines	43
Booth Steamship Co., Ltd.	11	Lykes Lines	108
Saguenay Shipping Limited	12	Zim Israel Navigation Co.	47-106
GUAM, Marianas Islands		HALIFAX, Nova Scotia	
American President Lines	130	Christensen Canadian	
Pacific Far East Line	141	African Lines	82
GUANTA, Venezuela		Hamburg-Chicago Line	167
Alcoa Steamship Company	6-7-96	Hoegh Line	48
Grace Line	16A	Oranje Line	27
		Saguenay Shipping Limited	12

Cruise the Pacific in the New Statesliners!



THE NEWEST, most modern carginers, these Advanced Class Mariners offer luxurious, air-conditioned staterooms and public spaces... a luxurious main lounge, cardroom, writing room, library, observation lounge and dining salon... exceptional cuisine... smooth, twenty-knot sailing to Hawaii and the Far East.

For more complete information, see Listings Nos. 125 & 127

STATES LINE

**Regular sailings to Hawaii, Philippines, Hong Kong,
Japan, Viet Nam, Thailand, Okinawa, Formosa, Korea**

320 California Street • San Francisco, California
Offices and Agents throughout the United States, Orient and Canada

PORTS OF CALL INDEX—Continued

	Listing No.		Listing No.
HAMBURG, Germany			
Barber Fern-Ville Lines.....	71-139	HELSINKI, Finland	
Finnlines.....	37B	Finnlines.....	37B
French Line.....	156	Moore-McCormack Lines.....	32
Hamburg-American		HILO, Hawaii	
Line.....	25B-28-104-154-169	Matson Lines.....	124
Hamburg-Chicago Line.....	167	HOBART, Tasmania	
Hanseatic Line.....	150	Columbus Line.....	145A
Independent Gulf Line.....	102	HONGKONG, British Crown Colony	
Johnson Line.....	151	American Mail Line.....	133
North German Lloyd.....	169	American Pioneer Line.....	70
Ocean-Stinnes Line.....	26-104	American President Lines.....	73-74-128-130
Poseidon Lines.....	25	Barber Line.....	71-139
Swedish American-Wilhelmsen		Fern-Ville Far East Lines.....	113-126
Line (joint service).....	33-103A	Isbrandtsen Company, Inc.....	46
Waterman Line.....	103	Java Pacific & Hoegh Lines.....	131
Wilhelmsen Lines.....	71-139	Klaveness Line.....	135
HAVRE, France			
Cosmopolitan Line.....	24	Knutsen Line.....	134
French Line.....	156	Lykes Lines.....	114
Holland-America Line.....	101	Maritime Company of	
Independent Gulf Line.....	102	the Philippines.....	69-140C
Interocean Line.....	155	Pacific Far East Line.....	141
Lykes Lines.....	100	Pacific Star Line.....	75
Oranje Line.....	27	Sabre Line.....	72-112
Waterman Line.....	103	States Line.....	125-127
		United Philippines Line.....	137

*The Princely Route
to England and Europe*



by deluxe air-conditioned passenger-cargo liners

M.S. PRINSES MARGRIET · M.S. PRINSES IRENE

from TORONTO or MONTREAL

to PLYMOUTH, LE HAVRE or ROTTERDAM.



ORANJE LINE

SEE LISTING 27

For attractive
*Seaway-
Great Lakes
Cruises*

See listing 165

PORTS OF CALL INDEX—Continued

**ALL
ABOARD
FOR A
WATERMAN
FREIGHTER
VOYAGE**



CONTINENTAL EUROPE
MEDITERRANEAN
THE FAR EAST

SEE YOUR TRAVEL AGENT OR WRITE:



DEPT. FTG

MOBILE, ALABAMA

KNUTSEN LINE

**HONGKONG MANILA
SINGAPORE AUSTRALIA**

Fast Norwegian
Air-Conditioned Cargo Liners
Carrying 12 Passengers

**EVERY THREE WEEKS
FROM SAN FRANCISCO**

See Listing No. 134 for details

**BAKKE STEAMSHIP CORPORATION
AGENTS**

Offices in

San Francisco
Seattle

Portland
Los Angeles

Listing No.

HONOLULU, Hawaii

American Pioneer Line	70
Columbus Line	145B
Hanseatic Line	123-150
Matson Lines	124
States Line	125
Tasman Pacific Service	143A

HOUSTON, Texas, U.S.A.

American Pioneer Line	66
Black Star Line	111A
Delta Line	97
Hamburg-American Line	104
Lykes Lines	91-100-108-114
Nedlloyd Line	77A
Nervion Line	109
Royal Netherlands SS Co.	96A
Sabre Line	112
Swedish American Line and Wilhelmsen Line (joint service)	103A
Zim Israel Navigation Co.	106

I

ILOILO, Philippine Islands

American Mail Line	133
Klaveness Line	135
Pacific Far East Line	141

INCHON, Korea

Lykes Lines	114
Pacific Far East Line	141

IQUIQUE (ARICA), Chile

Grace Line	147
------------	-----

IQUITOS, Peru (Amazon River)

Booth Steamship Co., Ltd.	11
---------------------------	----

ISKENDERUN, Turkey

Lykes Lines	42-108
-------------	--------

ISTANBUL, Turkey

American Export Lines	43
Concordia Line	44
Hellenic Lines Limited	49
Lykes Lines	42-108

INVERCARGILL, New Zealand

Port Line	66A
-----------	-----

IZMIR, Turkey

American Export Lines	43
Hellenic Lines	49
Lykes Lines	108

J

JACKSONVILLE, Florida, U.S.A.

Independent Gulf Line	102
Lykes Lines	42
Ocean-Stinnes Lines	26
Manchester Liners, Ltd.	20A
Royal Netherlands SS Co.	16
Sidarma Line	102A

PORTS OF CALL INDEX—Continued

	Listing No.		Listing No.
Wilhelmsen-Swedish American Lines	103A	Fern-Ville Far East Line	113
JEDDAH, Saudi Arabia		Isbrandtsen Company, Inc.	46
Concordia Line	45	Lykes Lines	114
Hellenic Lines Limited	52	Pacific Far East Line	141
Isthmian Lines	78	States Line	125
Nedlloyd Line	54	KHORRAMSHAHR, Iran	
K		Concordia Line	45
KAHULUI, Hawaii		Hansa Line	44B
Matson Lines	124	Hellenic Lines Limited	52
KARACHI, Pakistan		Isthmian Lines	44A
American Export Lines	43	Nedlloyd Line	54
American President Lines	73-128	KINGSTON, Jamaica, Br. W. I.	
Hellenic Lines Limited	78A	Alcoa Steamship Co.	96
Hoegh Line	48	American Pioneer Line	66
Isbrandtsen Company, Inc.	46	Grace Line	16A
Isthmian Lines	78	Saguenay Shipping Limited	12
Java Pacific & Hoegh Lines	131	United Fruit Company	9-92
Nedlloyd Line	166	KINGSTOWN (See St. Vincent, B.W.I.)	
Scindia Line	77	KOBE, Japan	
KEELUNG (Taiwan), Formosa		American Mail Line	133
American Mail Line	133	American-Manchurian Line	80-129
American Pioneer Line	70	American Pioneer Line	70
American President Lines	73-128-130	American President Lines	73-128-130
		Fern-Ville Far East Lines	113-126



Swift "Mariners" serve Far East ports.

Modern United States Lines Cargo Liners TO EUROPE... TO THE FAR EAST

Fifty-three fine American freighters, offer frequent, convenient sailings. They carry you informally, comfortably and leisurely. They give you the most for your travel dollar. Your travel agent can provide full information.

FOR DETAILS SEE

- Listing 23 • Listing 66
- Listing 70

UNITED STATES LINES

ONE BROADWAY, NEW YORK, N. Y. • TELEPHONE Dighy 4-6900

PORTS OF CALL INDEX—Continued

	Listing No.		Listing No.
Isbrandtsen Company, Inc.	46	LAGOS, Nigeria, West Africa	
Lykes Lines	114	Barber-West African Line	84
O.S.K. Line	140	Black Star Line	81-111A
Pacific Far East Line	141	Chargeurs Reunis	85A
Pacific Star Line	75	Delta Line	111
Sabre Line	72-112	Elder Dempster Lines	88
States Line	125	Farrell Lines	83
Waterman Line	121		
KOREA (See Inchon and Pusan)		LA GUAIRA, Venezuela	
KOTKA, Finland		Alcoa Steamship Company	7-96
Finlines	37B	d'Amico Line	160A
KRISTIANSAND, Norway		Nedlloyd Line	77A
Norwegian America Line	34	Fern-Ville Caribbean Service	118
KUWAIT, Kuwait		Grace Line	8-16A
Concordia Line	45	Lykes Lines	91
Hansa Line	44B	Moore-McCormack Lines	148
Hellenic Lines Limited	52	Saguenay Shipping Limited	12
		Royal Netherlands S.S. Co.	16-96A
L		LAS PALMAS (See Canary Islands)	
LA CEIBA, Honduras		LAUTOKA, Fiji Islands	
Standard Fruit & SS Co.	14-94	Pacific Islands Transport Line	144
LAE, New Guinea		LEGHORN, Italy	
Pacific Islands Transport Line	144	American Export Lines	43
		American President Lines	73-128
		Lykes Lines	42-108
		LE HAVRE, France (see Havre)	
		LEITH, Scotland	
		Cairn-Thompson Line	22B
		LISBON, Portugal	
		American Export Lines	43
		Azores Steamship Line	41
		LIVERPOOL, England	
		East Asiatic Line	160
		Head Line and Lord Line	20
		Lykes Lines	100
		United States Lines	23
		LOBITO, Angola, West Africa	
		Barber-West African Line	84

ISTHMIAN LINES

AMERICAN FLAG C-3 CARGOLINERS

All Outside Staterooms with Private
Shower and Toilet

WESTBOUND 'ROUND THE WORLD—Fortnightly from New York via Panama Canal and California to Philippines, Saigon, Bangkok, Indonesia, Malaya, Ceylon, India, Red Sea, Suez Canal and return to U.S.A.

INDIA—Fortnightly via Suez Canal, direct to Beirut, Alexandria, Red Sea Ports, West Pakistan and India Ports returning to U.S.A. North Atlantic Ports via Suez Canal.

HAWAIIAN ISLANDS—From New York and New Orleans to Honolulu and Outer-island Ports in Hawaii, returning to U.S. North Atlantic Ports.
(For Details See Listings Nos. 44A, 68, 78 and 142)

ISTHMIAN LINES, INC.

90 Broad Street New York 4, N.Y.
Dgby 4-9100

(Brochure Sent On Request)

BARBER STEAMSHIP LINES, INC.

Sailing Every 8 Days

From Atlantic & Pacific Coast Ports to the
Far East and 'Round the World on Fast
Norwegian Flag Cargo-Passenger Vessels.

For Details See Listings:
Nos. 5-71-116A-139

Barber Steamship Lines, Inc.

17 Battery Place, N. Y. 4, N. Y. WH. 4-1300

PORTS OF CALL INDEX—Continued

	Listing No.		Listing No.
Delta Line	111	Fern-Ville Far East Lines	113-126
Elder Dempster Lines	88	French Line	156
Farrell Lines	83	Furness Pacific Line	120A
LONDON, England		Grace Line	147
East Asiatic Line	160	Hamburg-American Line	118A-154
Furness Great Lakes Line	168	Hanseatic Line	123-150
Furness (Pacific) Line	152	Holland-America Line	120-157
Holland-America Line	101-157	Interocean Line	155
Interocean Line	155	Italian Lines	161
Johnson Line	151	Java Pacific & Hoegh Lines	131
Lykes Lines	100	Johnson Line	151
Fred. Olsen Line	159	Klaveness Line	135
Oranje Line	27	Matson Lines	124
Royal Mail Line	153	Moore-McCormack Lines	148
LOS ANGELES, Calif., U.S.A.		Nedlloyd Line-Africa Service	162
American Mail Line	133	North German Lloyd	118A
American President		Oceanic Steamship Company	145
Lines	1-73-74-116B-128-130	Olsen Line, Fred.	159
Barber Steamship Lines	116A-139	O.S.K. Line	140
Columbus Line	145B	Pacific Australia Direct Line	146
d'Amico Line	160A	Pacific Islands Transport Line	144
East Asiatic Line	119-160	Pacific Republics Line	148
Fern-Ville Caribbean Service	118	Royal Mail Lines	153
		Shinnihon Steamship Co., Ltd.	140A
		Tasman Pacific Service	143A



For service, relaxation and comfort...

ROBIN LINE... between the United States and Africa

THE ROBIN LINE service of Moore-McCormack Lines provides three sailings per month by modern cargo liners between the United States and South and East Africa.

These vessels, offering deep-down comfort, accommodate twelve passengers, feature single and double rooms (each with private bath), and provide a gracious background for a friendly cruise in an unusual setting.

For the adventurous, there are exciting,

stimulating days and nights to be spent in enchanting ports of call. Here you can shop leisurely for the unusual, enjoy sights and people that have always been only a romantic legend.

For complete information regarding rates and sailings, see your Travel Agent or...

MOORE-McCORMACK
Lines
Two Broadway New York 4, N. Y.

PORTS OF CALL INDEX—Continued

	Listing No.	Listing No.
LOS ANGELES, Continued		
Union SS Co. of N.Z.	143	
United Philippine Lines	137	
Waterman Line	117B	
Westfal-Larsen Company Line	149	
LOURENCO MARQUES, Mozambique		
Christensen Canadian		
African Lines	82	
Farrell Lines	83	
Lykes Lines	110	
Nedlloyd Line-Africa Service	162	
Robin Line	86	
LUANDA, Angola, West Africa		
Barber-West African Line	84	
Delta Line	111	
Elder Dempster Lines	88	
Farrell Lines	83	
LYTTELTON, New Zealand		
Port Line	66A	
Tasman Pacific Service	143A	
M		
MACEIO, Brazil		
Booth Steamship Co.	58A	
MACKENZIE, British Guiana		
Saguenay Shipping Limited	12	
MADEIRA ISLAND		
Azores Steamship Line	41	
MADRAS, India		
American Export Lines	43	
American Mail Line	133	
Hellenic Lines Limited	78A	
Hoegh Line	48	
Nedlloyd Line	77A-131	
MANAUS, Brazil (Amazon River)		
Booth Steamship Co., Ltd.	11	
MANCHESTER, England		
Lykes Lines	100	
Manchester Liners Ltd.	20A-22A	
MANGALORE, India		
American President Lines	73-128	
MANILA, Philippine Islands		
American Mail Line	133	
American Pioneer Line	70	
American President Lines	74-130	
Barber Line	71-139	
Fern-Ville Far East Lines	113-126	
Isthmian Lines	68-142	
Java Pacific & Hoegh Lines	131	
Klaveness Line	135	
Knutsen Line	134	
Lykes Lines	114	
Maritime Company of the Philippines	69-140C	
Nedlloyd Line	131	
Pacific Far East Line	141	
Pacific Star Line	75	
Philippine National Line	137	
States Line	125-127	
MARACAIBO, Venezuela		
Alcoa Steamship Company	7-96	
Fern-Ville Caribbean Service	118	
Grace Line	8-16A	
Lykes Lines	91	
Moore-McCormack Lines	148	
Royal Netherlands S.S. Co.	16-96A	
Saguenay Shipping Limited	12	
Venezuelan Line	7	
MARSEILLES, France		
American President Lines	73-128	
Barber Fern-Ville Lines	71-139	
d'Amico Line	160A	
Italian Line	161	
Lykes Lines	42-108	
Sidarma Line	102A	
Wilhelmsen Lines	71-139	
MASSAWA, Eritrea, East Africa		
Concordia Line	45	
Isthmian Line	44A	
MATADI, Congo, W. Africa		
Barber-West African Line	84	
Belgian-African Line	85	
Black Star Line	81-111A	
Christensen Canadian African Line	82	
Delta Line	111	
Elder Dempster Lines	88	
Farrell Lines	83	
MAYAGUEZ, Puerto Rico		
Alcoa Steamship Co.	6	
Isbrandtsen Company	46-117A	
Lykes Lines	91	
Waterman of Puerto Rico, U.S.A., Inc.	90	
MELBOURNE, Australia		
Columbus Line	145A-145B	
MILWAUKEE, Wis., U.S.A.		
Hamburg-American Line	169	
MOBILE, Alabama, U.S.A.		
Alcoa Steamship Company, Inc.	96	
Royal Netherlands SS Co.	96A	
Waterman of Puerto Rico, U.S.A., Inc.	90	

PORTS OF CALL INDEX—Continued

	Listing No.		Listing No.
MOJI, Japan		NAPLES, Italy	
States Line.....	125	American Export Lines.....	43
MOLLEDO, Peru		American President Lines.....	73-128-130
Grace Line.....	16B-147	Concordia Line.....	44-45
MOMBASA, Kenya, East Africa		Hellenic Lines Limited.....	49
Christensen Canadian		Lykes Lines.....	42-108
African Line.....	82	Waterman Line.....	107
Farrell Lines.....	83	Yugoslav Great Lakes Line.....	170
Lykes Lines.....	110	Yugoslav Line.....	50
Nedlloyd Line-Africa Service.....	162	NASSAU, Bahamas, Br. W. I.	
Robin Line.....	86	Saguenay Shipping Limited.....	12
MONROVIA, Liberia, W. Africa		NATAL, Brazil	
Barber-West African Line.....	84	Booth Steamship Co.....	58A
Delta Line.....	111	NAWILIWILI, Hawaii	
Elder Dempster Lines.....	88	Matson Lines.....	124
Farrell Lines.....	83	NEWCASTLE, Australia	
MONTEVIDEO, Uruguay		Columbus Line.....	145B
Columbus Line.....	56	NEWCASTLE, England	
Delta Line.....	97	Cairn-Thompson Line.....	22B
Ivaran Line.....	60	Ellerman's Wilson Line.....	21
Moore-McCormack Lines.....	59-148	NEW ORLEANS, Louisiana, U.S.A.	
Nopal Line.....	97A	Alcoa Steamship Company, Inc.....	96
Torm Lines.....	61	American Pioneer Line.....	66
Westfal-Larsen Line.....	149	Black Star Line.....	111A
MONTREAL, Quebec, Canada			
Cairn-Thompson Line.....	22B		
Christensen Canadian			
African Line.....	82		
Fjell-Oranje Line.....	165		
Hamburg-American Line.....	25B-169		
Hamburg-Chicago Line.....	167		
Head Line and Lord Line.....	20		
Manchester Liners Ltd.....	22A		
Nedlloyd Line.....	47B-166		
North German Lloyd.....	169		
Oranje Line.....	27-165		
Port Line.....	66A		
Poseidon Lines.....	25		
Saguenay Shipping Ltd.....	12-22-164		
Yugoslav Great Lakes Line.....	170		
Zim Israel Navigation Co.....	47-166		
MONTserrat, West Indies			
Saguenay Shipping Limited.....	12		
N			
NAGOYA, Japan			
American Pioneer Line.....	70		
American President Lines.....	130		
Pacific Far East Line.....	141		
Pacific Orient Express.....	138		
Sabre Line.....	72-112		
States Line.....	125		
NAPIER, New Zealand			
Tasman Pacific Service.....	143		



• COLUMBUS LINE

Pacific Division

- Excellent Passenger Accommodations

**Regular Monthly Service to
SYDNEY — MELBOURNE — ADELAIDE**

ALSO AVAILABLE

- **Trips to Northern Europe** from Pacific Coast via Australia. Four to five months duration. \$1,300 per person.
- **Around-the-World** from Pacific Coast via Australia, Northern Europe and the Panama Canal. Five to six months duration. \$1,600 per person.

See Listings Nos. 145A and 145B

- **MARINE CHARTERING CO., INC.**
Pacific Coast Operating Agents
310 Sansome St., San Francisco 4, Calif.

PORTS OF CALL INDEX—Continued

Listing No.	Listing No.
Chilean Line..... 99A	Hansa Line..... 44B
Delta Line..... 97-111	Hellenic Lines..... 49-52-78
Fern-Ville Far East Lines..... 113	Hoegh Line..... 48
Gulf & South America SS Co..... 99	Iceland Steamship Company, Ltd..... 38
Hamburg-American Line..... 104	Isbrandtsen Company..... 46-117A
Holland-America Line..... 101	Isthmian Lines..... 44A-78
Independent Gulf Line..... 102	Ivaran Line..... 60
Lykes Lines..... 100-108-110-114	Maritime Company of the Philippines..... 69
Nervion Line..... 109	Meyer Line..... 30
Nopal Line..... 97A	Moore-McCormack Lines..... 32-59-86
Ozean-Stinnes Lines..... 104	Nedlloyd Lines Africa Service..... 162
Royal Netherlands SS Co..... 96A	Nedlloyd Lines India Service..... 77A
Sabre Line..... 112	Nedlloyd Lines Mediterranean and Red Sea Service..... 54
Sidarma Line..... 102A	New Zealand Shipping Co., Ltd..... 67A
Standard Fruit & SS Co..... 93-94	Norwegian America Line..... 34
Swedish American/Wilhelmsen Lines (joint service)..... 103A	Pacific Star Line..... 75
United Fruit Company..... 92	Port Line..... 66A
United States Lines..... 66-112	Red Star Line..... 29A
Waterman Line..... 103-107	Robin Line..... 86
Waterman of Puerto Rico, U.S.A., Inc..... 90	Royal Netherlands SS Co..... 16
Zim Israel Navigation Co..... 106	Sabre Line..... 72-112
NEW PLYMOUTH, New Zealand	
Port Line..... 66A	Scandinavian American Line..... 35
Tasman Pacific Service..... 143A	Scindia Line..... 77
NEWPORT, England	
Saguenay Shipping Limited..... 22	South African Marine Corp. (N.Y.)..... 87
NEWPORT NEWS, Virginia, U.S.A.	
Barber Line..... 5-71	Standard Fruit and S.S. Co..... 14-17A
Royal Netherlands SS Co..... 16	Swedish American Lines Limited..... 37
NEW YORK, New York, U.S.A.	
Alcoa Steamship Company, Inc..... 6-7	Swedish Transatlantic Line..... 37
American-Australian Line..... 67	Thorden Line..... 36
American Export Lines..... 43	Torn Lines..... 51-61
American Pioneer Line..... 23-66-70	United Fruit Company..... 9
American President Lines..... 1-73-74-116B	United States Lines..... 23-66-70
Argentine State Line..... 63	Waterman Line..... 121
Azores Steamship Line..... 41	Wilhelmsen Lines..... 71-139
Barber Fern-Ville Lines..... 71-139	Yugoslav Line..... 50
Barber Line..... 5-71	NORFOLK, Virginia, U.S.A.
Barber-West African Line..... 84	Manchester Liners, Ltd..... 20A
Belgian Line..... 31	Swiss Shipping Co., Ltd..... 25A
Black Diamond Line..... 29	United Fruit Company..... 9
Black Star Line..... 81	NOUMEA, New Caledonia
Booth Steamship Company..... 58A	Pacific Islands Transport Line..... 144
Bull Line..... 13	NUKUALOFA, Tonga Islands
Chargeurs Reunis..... 85A	Pacific Islands Transport Line..... 144
Columbus Line, Inc..... 56-65	O
Concordia Line..... 44-45	OKINAWA, Ryukyu Islands
Cosmopolitan Line..... 24	American President Lines..... 73-128-130
Costa Line..... 53	Pacific Far East Line..... 141
Elder Dempster Lines..... 88	States Line..... 125
Farrell Lines..... 83	OPUA, New Zealand
Finnlines..... 37B	Tasman Pacific Service..... 143A
Grace Line..... 8-16A-16B-18	OSAKA, Japan
Hamburg-American Line..... 28	Fern-Ville Far East Lines..... 113-126
	O.S.K. Line..... 140
	Pacific Star Line..... 75

PORTS OF CALL INDEX—Continued

	Listing No.		Listing No.
OSLO, Norway			
Moore-McCormack Lines	32	PENANG, Malaya Federation	
Norwegian America Line	34	American Mail Line	133
Olsen Line, Fred	159	American President Lines	73-74-128-130
Scandinavian American Line	35	Barber Fern-Ville Lines	71-139
Swedish American Line-Wilhelmsen		Hoegh Line	48
Line (joint service)	33-103A	Isthmian Lines	68-142
		Java Pacific & Hoegh Line	131
		Klaveness Line	135
		Lykes Lines	114
		Wilhelmsen Lines	71-139
P			
PAGO PAGO, American Samoa			
Oceanic Steamship Company	145	PHILADELPHIA, Penn., U.S.A.	
Pacific Islands Transport Line	144	Alcoa Steamship Company	6
		Moore-McCormack Lines	59
PANAMA CANAL ZONE			
American Pioneer Line	66	PIRAEUS, Greece	
American President Lines	1-73-74-116B	American Export Lines	43
Barber Line	5-71-116A	Concordia Line	44
Chilean Line	99A	Hellenic Lines Limited	49
d'Amico Line	160A	Lykes Lines	42-108
East Asiatic Line	160	PLYMOUTH, England	
Fern-Ville Caribbean Service	118	Oranje Line	27
Fern-Ville Far East Lines	113	PLYMOUTH, Montserrat, Br. W. I.	
Fred. Olsen Line	159	Saguenay Shipping Limited	12
Grace Line	16B-147	POINTE NOIRE, French Africa	
Gulf & So. America SS Co.	99	Chargeurs Reunis	85A
Hanseatic Line	150	Delta Line	111
Holland America Line	157	Elder Dempster Lines	88
Interocean Line	155	Farrell Lines	83
Italian Line	161	PONCE, Puerto Rico	
Johnson Line	151	Alcoa Steamship Company, Inc.	6-96
Lykes Lines	91-114	Isbrandtsen Company	117A
Moore-McCormack Lines	148	Lykes Lines	91
Nedlloyd Lines-Africa Service	162	Waterman of Puerto Rico,	
Nedlloyd Line-India Service	77A	U.S.A., Inc.	90
New Zealand Shipping Co., Ltd.	67A	PORT ALFRED, Que., Canada	
Port Line	66A	Saguenay Shipping Limited	12
Saguenay Shipping Limited	12	PORT ARANSAS, Texas, U.S.A.	
Standard Fruit & SS Co.	17A-93	Alcoa Steamship Co.	96
United Fruit Company	9-92-116	PORT-AU-PRINCE, Haiti	
		Alcoa Steamship Co.	96
PAPEETE, Tahiti, French Polynesia		Lykes Lines	91
American Pioneer Line	66	Royal Netherlands SS Co.	16
Pacific Islands Transport Line	144	Saguenay Shipping Limited	12
PARAMARIBO, Dutch Guiana		PORT ELIZABETH, South Africa	
Alcoa Steamship Company	7-96	Christensen Canadian	
Royal Netherlands S.S. Co.	16-96A	African Lines	82
PARANAGUA, Brazil		Farrell Lines	83
Columbus Line, Inc.	56	Lykes Lines	110
Delta Line	97	Nedlloyd Lines-Africa Service	162
Ivaran Lines	60	Robin Line	86
Moore-McCormack Lines	148	PORT GENTIL, Fr. Equatorial Africa	
Nopal Line	97A	Chargeurs Reunis	85A
Westfal-Larsen Company Line	149	Delta Line	111
PARNAIBA, Brazil			
Booth Steamship Co.	58A		

PORTS OF CALL INDEX—Continued

	Listing No.		Listing No.
PORT HARCOURT, Nigeria			
Barber-West African Line.....	84	PUERTO BARRIOS, Guatemala	
Black Star Line.....	81-111A	Standard Fruit & SS Co.....	94
Chargeurs Reunis.....	85A	PUERTO BOLIVAR, Ecuador	
Delta Line.....	111	United Fruit Company.....	116
Elder Dempster Lines.....	88	Standard Fruit & SS Co.....	93
PORTLAND, Oregon, U.S.A.			
American Mail Line.....	133	PUERTO CABELLO, Venezuela	
Columbus Line.....	145A	Alcoa Steamship Company.....	7-96
d'Amico Line.....	160A	Fern-Ville Caribbean Service.....	118
East Asiatic Line.....	160	Grace Line.....	8-16A
French Line.....	156	Lykes Lines.....	91
Furness Pacific Line.....	152	Moore-McCormack Lines.....	148
Hamburg-American Line and		Nedlloyd Line.....	77A
North German Lloyd		Royal Netherlands S.S. Co.....	16-96A
(joint service).....	118A-154	Saguenay Shipping Limited.....	12
Italian Line.....	161	Venezuelan Line.....	7
Johnson Line.....	151	PUERTO CARDON, Venezuela	
States Line.....	125	Royal Netherlands SS Co.....	96A
PORTO ALEGRE, Brazil			
Delta Line.....	97	PUERTO CORTES, Honduras	
PORT-OF-SPAIN, Trinidad, B.W.I.			
Alcos Steamship Company.....	7-96	United Fruit Company.....	9
American Pioneer Line.....	66	PUERTO SUCRE, Venezuela	
Booth Steamship Co., Ltd.....	11	Royal Netherlands SS Co.....	16
Moore-McCormack Lines.....	59-148	PUNTARENAS, Costa Rica	
Nedlloyd Line.....	77A	Grace Line.....	147
Royal Netherlands S.S. Co.....	16-96A	PUSAN, Korea	
Saguenay Shipping Limited.....	12	American Mail Line.....	133
Westfal-Larsen Company Line.....	149	American Pioneer Line.....	70
PORTO TORRES, Sardinia (Italy)			
Concordia Line.....	44	Isbrandtsen Steamship Company.....	46
PORT SAID, Egypt			
American President Lines.....	73-128	Lykes Lines.....	114
Concordia Line.....	45	Pacific Far East Lines.....	141
Hansa Line.....	44B	States Line.....	125
Hoegh Line.....	48	Waterman Line.....	121
Nedlloyd Lines.....	47B-54-77A-162-171	QUEBEC CITY, QUE., Canada	
PORT SUDAN, Egypt			
Concordia Line.....	45	Poseidon Lines.....	25
Hellenic Lines Limited.....	52	R	
PORT SWETTENHAM, Malaya			
American President Lines 73-74-128-130		RANGOON, Burma	
Barber Fern-Ville Lines.....	71-139	American Mail Line.....	133
Hoegh Line.....	48	RECIFE (Pernambuco), Brazil	
Isthmian Lines.....	68-142	Booth Steamship Co.....	58A
Klaveness Line.....	135	Columbus Line, Inc.....	56
Lykes Lines.....	114	REYKJAVIK, Iceland	
Wilhelmsen Lines.....	71-139	Iceland Steamship Company.....	36
PUERTO ARMUELLES, Panama			
United Fruit Company.....	116	RIJEKA (Fiume), Yugoslavia	
PUERTO BENITO, Spanish Guinea			
Farrell Lines.....	83	American Export Lines.....	43
		Lykes Lines.....	42-108
		Yugoslav Great Lakes Line.....	170
		Yugoslav Line.....	50

PORTS OF CALL INDEX—Continued

	Listing No.	Listing No.
RIO DE JANEIRO, Brazil		
Columbus Line, Inc.	56	
Delta Line	97	
Ivaran Line	60	
Moore-McCormack Lines	59-148	
Nopal Line	97A	
Torm Lines	61	
Westfal-Larsen Company Line	149	
ROSEAU (See Dominica, Br. W. I.)		
ROTTERDAM, Holland		
Barber Fern-Ville Lines	71-139	
Black Diamond Line	29	
Fred. Olsen Line	159	
French Line	156	
Hamburg American Line	25B-28-104-160	
Hamburg-Chicago Line	167	
Holland-America Line	101-157	
Johnson Line	151	
Lykos Lines	100	
North German Lloyd	169	
Wilhelmsen Lines	71-139	
Oranje Line	27	
Ozaan-Stinnes Lines	26	
Poseidon Lines	25	
Swedish American-Wilhelmsen Line (joint service)	33-103A	
Swiss Shipping Co.	25A	
United States Line	23	
Waterman Line	103	
S		
SAIGON, Viet-Nam		
American Mail Line	133	
American President Lines	73-74-128-130	
Isthmian Lines	68-142	
Pacific Far East Line	141	
States Line	127	
ST. CROIX, Virgin Islands		
Alcoa Steamship Co.	6	
ST. GEORGE'S (See Grenada, Br. W. I.)		
SAINT JOHN, N. B., Canada		
Cairn-Thompson Line	22B	
Christensen Canadian African Lines	82	
Head Line and Lord Line	20	
Manchester Liners, Ltd.	22A	
Oranje Line	27	
Port Line	66A	
Poseidon Lines	25	
Saguenay Shipping Limited	12	
Zim Israel Navigation Co.	47	
ST. JOHN'S (See Antigua, Br. W. I.)		
ST. KITTS, Br. West Indies		
Booth Steamship Co.	11	
Saguenay Shipping Limited	12	
ST. LUCIA, Br. West Indies		
Booth Steamship Co.	11	
Saguenay Shipping Limited	12	
ST. THOMAS, Virgin Islands		
Alcoa Steamship Co.	6	
East Asiatic Line	160	
ST. VINCENT, Br. West Indies		
Saguenay Shipping Limited	12	
SALAVERRY, Peru		
Grace Line	16B-18	
SALONIKA, Greece		
American Export Lines	43	
Hellenic Lines Limited	49	
SAN FRANCISCO, Calif., U.S.A.		
American President Lines	1-73-74-128-130	
Barber Line	139	
Columbus Line	145B	
d'Amico Line	160A	
East Asiatic Lines	119-160	
Fern-Ville Caribbean Service	118	
Fern-Ville Far East Lines	113-126	
French Line	119A-156	
Furness Pacific Line	120A	
Grace Line	147	
Hamburg-American Line	118A-154	
Hanseatic Line	123-150	
Holland-America Line	120-157	
Interocean Line	155	
Isbrandtsen Company, Inc.	46-117A	
Isthmian Lines	142	
Italian Line	161	
Java-Pacific & Hoogh Lines	131	
Johnson Line	151	
Klavensness Line	135	
Knutsen Line	134	
Maritime Company of the Philippines	140C	
Matson Lines	124	
Moore-McCormack Lines	148	
North German Lloyd	118-154	
Olsen Line, Fred	159	
O.S.K. Line	140	
Pacific Australia Direct Line	146	
Pacific Far East Line	141	
Pacific Islands Transport Line	144	
Royal Mail Lines	153	
Shinnihon SS Co.	140A	
States Line	125-127	
Tasman Pacific Service	143A	
United Fruit Company	116	
United Philippine Lines	137	
Waterman Steamship Corp.	117B-121	
Westfal-Larsen Co. Line	149	
SAN JOSE, Guatemala		
Grace Line	147	

PORTS OF CALL INDEX—Continued

	Listing No.		Listing No.
SAN JUAN, Puerto Rico			
Alcoa Steamship Company, Inc.	6-96	East Asiatic Line	160
Bull Line	13	French Line	156
Isbrandtsen Company	46-117A	Furness Pacific Line	120A-152
Lykes Lines	91	Hamburg-American and North German Lloyd (joint service)	118A-154
Waterman of Puerto Rico, U.S.A., Inc.	90	Italian Line	161
Saguenay Shipping Limited	12	Johnson Line	151
SAN MIGUEL (see Azores Islands)			
SANTA ISABEL, Fernando Po			
Farrell Lines	83	Olsen Line, Fred	159
SANTO DOMINGO, Dominican Republic			
Alcoa Steamship Co.	96	Royal Mail Lines	153
Grace Line	16A	Tasman Pacific Service	143A
Lykes Lines	91	United Fruit Company	116
Royal Netherlands SS Co.	16	SEVILLE, Spain	
Saguenay Shipping Limited	12	Concordia Line	44
SANTIAGO, Cuba			
Saguenay Shipping Limited	12	SHIMIZU, Japan	
SANTOS, Brazil			
Columbus Line, Inc.	56	American President Lines	130
Delta Line	97	Pacific Orient Express Line	138
Ivaran Line	60	Sabre Line	72-112
Moore-McCormack Lines	59-148	SINGAPORE, Straits Settlements	
Nopal Line	97A	American Mail Line	133
Torm Lines	61	American President Lines	73-74-128-130
Westfal-Larsen Company Line	149	Barber Fern-Ville Line	71-139
SAN VICENTE, Chile			
Chilean Line	99A	Barber Line	71-139
SAO LUIS, Brazil			
Booth Steamship Co.	58A	Fern-Ville Far East Lines	113-126
SAO SALVADOR (BAHIA), Brazil			
Booth Line	58A	Hoegh Line	48
Delta Line	97	Isthmian Lines	68-142
Moore-McCormack Lines	59-148	Java Pacific & Hoegh Line	131
Westfal-Larsen Line	149	Klaveness Line	135
SAVANNAH, Georgia, U.S.A.			
American Pioneer Line	66	Knutsen Line	134
Black Star Line	81-111A	Lykes Lines	114
Independent Gulf Line	102	Nedlloyd Line	77A
Lykes Lines	42	Wilhelmsen Lines	71-139
Manchester Liners, Ltd.	20A	STAVANGER, Norway	
Moore-McCormack Lines	59	Norwegian America Line	34
Ozean-Stinnes Lines	26	STOCKHOLM, Sweden	
Royal Netherlands SS Co.	16	Moore-McCormack Lines	32
Sidarma Line	102A	SUEZ, Egypt	
Wilhelmsen/Swedish Am Lines	33-103A	American President Lines	73-128
Zim Israel Navigation	106	Barber Fern-Ville Lines	71-139
SEATTLE, Washington, U.S.A.			
American Mail Line	133	Nedlloyd Line-Africa Service	162
Columbus Line	145B	Wilhelmsen Lines	71-139
d'Amico Line	160A	SURABAYA, Java	
		Isthmian Lines	68-142
		Lykes Lines	114
		SURINAM, Dutch Guiana	
		Alcoa Steamship Co.	96
		SUVA, Fiji Islands	
		Pacific Islands Transport Line	144
		SWANSEA, England	
		Saguenay Shipping Limited	22

PORTS OF CALL INDEX—Continued

	Listing No.		Listing No.
SYDNEY, Australia		TORONTO, Ontario, Canada	
American Australian Line.....	67	Furness Great Lakes Line.....	163
American Pioneer Line.....	66	Oranje Line.....	27-165
Columbus Line.....	65-145A-145B	Saguenay Shipping Ltd.....	164
New Zealand Shipping Co., Ltd.....	67A	Zim Israel Navigation Co.....	166
Oceanic Steamship Co.....	145		
Pacific Australia Direct Line.....	146	TRIESTE, Italy	
Port Line.....	66A	American Export Lines.....	43
		Lykes Lines.....	42-108
		Yugoslav Line.....	50
		TRINIDAD (See Port of Spain)	
T		TRIPOLI, Libya	
TAIWAN, Formosa (see Keelung)		American Export Lines.....	43
TAKAO, Formosa		Hansa Line.....	44B
American Mail Line.....	133	Hoegh Line.....	48
Pacific Far East Line.....	141	Nedlloyd Lines.....	77A
TAKORADI, Ghana, W. Africa		TURKS ISLAND, British West Indies	
Barber-West African Line.....	84	Royal Netherlands SS Co.....	16
Black Star Line.....	81-111A		
Delta Line.....	111	U	
Elder Dempster Lines.....	88	UMM SAID, Shiekhdom of Qatar	
Farrell Lines.....	83	Hansa Line.....	44B
TALARA, Peru			
Grace Line.....	16B	V	
TAMATAVE, Madagascar		VALPARAISO, Chile	
Robin Line.....	86	Chilean Line.....	99A
TAMPA, Florida, U.S.A.		Grace Line.....	16B-18-147
Ocean/Stinnes Line.....	26	Gulf & So. American SS Co.....	99
Sabre Line.....	112	Nedlloyd Line.....	77A
Wilhelmson/Swedish Am. Lines.....	103A	Westfal-Larsen Company Line.....	149
TAMPICO, Mexico		VANCOUVER, British Columbia	
Holland-America Line.....	105	American Mail Line.....	133
TANGA, Tanganyika, E. Africa		Columbus Line.....	145A-145B
Christensen Canadian		d'Amico Line.....	160A
African Lines.....	82	East Asiatic Line.....	119-160
Farrell Lines.....	83	French Line.....	119A-156
Nedlloyd Line-Africa Service.....	162	Furness Pacific Lines.....	120A-152
Lykes Lines.....	110	Hamburg-America Line.....	154
Robin Line.....	86	Hanseatic Line.....	123-150
TANGIER, Morocco		Holland-American Line.....	120-157
Yugoslav Line.....	50	Italian Line.....	161
TEMA, Ghana, W. Africa		Johnson Line.....	151
Barber-West African Line.....	84	Nedlloyd Line.....	131
Black Star Line.....	81-111A	North German Lloyd.....	118A
TENERIFE (See Canary Islands)		Fred. Olsen Line.....	159
TERCEIRA (see Azores Islands)		Royal Mail Lines.....	153
TOCOPILLA, Chile		Tasman Pacific Service.....	143A
Chilean Line.....	99A	VENICE, Italy	
Grace Line.....	16B	American Export Lines.....	43
TOLEDO, Ohio, U.S.A.		Lykes Lines.....	42-108
Saguenay Shipping Ltd.....	164	Yugoslav Line.....	50
		VERA CRUZ, Mexico	
		Holland-America Line.....	105

PORTS OF CALL INDEX—Continued

	Listing No.		Listing No.
VILA, New Hebrides Islands		YOKOHAMA, Japan	
Pacific Islands Transport Line.....	144	American Mail Line.....	133
VITORIA, Brazil		American Pioneer Line.....	70
Delta Line.....	97	American President Lines.....	73-128-130
VICTORIA, B. C., Canada		Fern-Ville Far East Lines.....	113-126
Furness Lines.....	120A	Lykes Lines.....	114
W		O.S.K. Line.....	140
WALVIS BAY, South West Africa		Pacific Far East Line.....	141
Farrell Lines.....	83	Pacific Star Line.....	75
WELLINGTON, New Zealand		Sabre Line.....	72-112
Port Line.....	66A	Shinnihon Steamship Co., Ltd.....	140A
Tasman Pacific Service.....	143A	States Line.....	125
WILLEMSTAD (See Curacao, N.W.L.)		Waterman Line.....	121
Y		Z	
YAWATA, Japan		ZANZIBAR, East Africa	
Barber Line.....	71-139	Farrell Lines.....	83
		Nedlloyd Line-Africa Service.....	162
		Robin Line.....	86



A Grace Line "Santa" cargo-passenger ship at Tacopilla, Chile, from a painting by Charles Evers. Because of Tacopilla's shallow harbor it is necessary for large ships to lie at buoys some distance out and lighters and water taxis are used to ferry cargo and passengers between ship and shore. For details of Grace Line's service from New York to the west coast of South America see Listing No. 18.



*Lounge on Columbus Lines' freighter
M.V. "Cap Colorado."*



*Dining room on American President Lines' Mariner
type cargo liner S.S. "President Garfield."*

*Lounge on Moore-McCormack Lines'
freighter S.S. "Mormacpride."*





Dining room on freighter M. V. "Maas Lloyd" of Nedlloyd Lines.



Dining room on Moore-McCormack Lines' freighter S.S. "Mormacpride."



Stateroom for single occupancy on American President Lines' Mariner cargo liner S.S. "President Adams."



Twin-bedded stateroom on Moore-McCormack Lines' Cargo liner S.S. "Mormacsaga."



Deck games are popular with passengers on Java Pacific & Hogeh Line's M.V. "Bengalen."



Sitting room in Master Suite on Pacific Far East Line's deluxe Mariner cargo liner S.S. "Japan Bear."



Dining room on freighter M. V. "Maas Lloyd" of Nedlloyd Lines.



Dining room on Moore-McCormack Lines' freighter S.S. "Mormacpride."



Stateroom for single occupancy on American President Lines' Mariner cargo liner S.S. "President Adams."



Twin-bedded stateroom on Moore-McCormack Lines' Cargo liner S.S. "Mormacsaga."



Deck games are popular with passengers on Java Pacific & Hogeh Line's M.V. "Bengalen."



Sitting room in Master Suite on Pacific Far East Line's deluxe Mariner cargo liner S.S. "Japan Bear."

From Atlantic Coast Ports

**Listing
No. 1**

NEW YORK TO CALIFORNIA VIA PANAMA CANAL

Fares \$350 to \$575 14 to 17 Days

From New York, frequent sailings by deluxe Mariner and C-3 cargoliners with accommodations for 12 passengers. For complete relaxation and freedom from care, a leisurely cruise in one of these cargoliners from coast-to-coast via the Panama Canal is unequalled.

Deluxe Mariner cargoliners. These ships are among the largest, fastest and most luxurious freighters afloat. The accommodations for 12 passengers are ultra modern and completely air-conditioned. The Presidents Adams, Coolidge, Hayes and Jackson each have three double cabins, four single cabins and a suite which may be arranged as individual or connecting rooms. All cabins and suites have an adjoining bath with glass-enclosed tub and shower. There is a dial telephone and radio in each cabin. A passenger elevator serves all decks. The main lounge, social center of the ship, is on the topmost deck with an adjoining glass-enclosed observation lounge. The dining room, glassed on three sides, shows the work of top interior decorators. Menus are excellent and varied. The voyage from New York to the Panama Canal takes four days, to Los Angeles 10 days, to San Francisco 14 days. Passenger fares: From New York to California, \$425 for each of two persons in double cabin; \$490 in single cabin; \$575 for each of two persons in suite.

The Presidents Arthur, Buchanan, Garfield and Taylor are similar to the above Mariners except the passenger accommodations are all on one deck. These vessels have four double cabins and four single cabins, some of which may be connected en suite. All have private bath. Cabins are equipped with a dial telephone and short wave radio. A well-appointed lounge and smoking room adjoins the dining room. Time in transit is the same as for vessels described above. Fares: New York to California, \$405 for each for two persons in double cabin, \$465 in single cabin.

C-3 cargoliners have four triple-berth (two lower and one upper) cabins with private shower and toilet, each of which is usually assigned to two persons. A combination lounge and dining room is shared by passengers and the ship's officers. The voyage from New York to the Panama Canal takes seven days, to San Francisco 17 days. Fares per person from New York to the Panama Canal, \$160; to San Francisco, \$350.

American President Lines, 29 Broadway, New York 6; 110 So. Dearborn St., Chicago 3; 601 California St., San Francisco 8; 514 West 6th St., Los Angeles 14; 1010 Connecticut Ave., Washington 6, D.C. **American Mail Line**, 1010 Washington Bldg., Seattle 1; 522 Pacific Bldg., Portland 4, Oregon.

**Listing
No. 5**

TRIPS TO THE PANAMA CANAL

From New York, delightful ocean voyages to the Panama Canal and return are available on modern Norwegian freighters sailing every eight days. The southbound voyage takes eight days and includes calls at Newport News, Va., and Charleston, S.C. Passengers disembark at the Canal Zone and have from one to eight days ashore in Panama at their own expense while awaiting northbound vessel for return trip to New York which is direct, takes five days. No passports are required by American citizens holding round trip tickets but a recent smallpox vaccination certificate is necessary. Most

FROM ATLANTIC COAST PORTS

ships carry 12 passengers (some carry four) in outside single and twin-bedded cabins with private shower and toilet. Some also have suites for which there is a 25% additional charge. Public rooms include a lounge and dining room. Some ships have a deck swimming pool. Scandinavian cuisine. Southbound vessels are en route to the Orient, northbound vessels are returning from the Orient. **Passenger fares:** Round trip \$228 per person, one-way \$120.

Barber Steamship Lines, 17 Battery Place, New York 4, or **Overseas Shipping Company**, Agents, 310 Sansome St., San Francisco 4.

**Listing
No. 6**

CARIBBEAN CRUISES

Fares \$350 to \$425

About 16-21 Days

From New York, Philadelphia and Baltimore, sailings every week by American type C-1 freighters with accommodations for 12 passengers. Outside twin-bedded cabins, each with private shower and toilet. There is a combination lounge-dining room where passengers take their meals with the ship's officers. American cuisine. Menus are excellent and varied. These informal cruises are ideal for those who have the time and are seeking a leisurely ocean voyage to gay and colorful ports in the Caribbean. There are two itineraries: one with calls at San Juan, Mayaguez and Ponce, Puerto Rico, and the other with calls at Puerto Rico and St. Thomas and St. Croix in the Virgin Islands. Vessels return to Philadelphia or New York where cruise terminates. **Fares:** \$350 to \$425 per person according to port of embarkation and itinerary.

Alcoa Steamship Company, Inc., 17 Battery Place, New York 4; One Canal St., New Orleans 12. Offices in Chicago, Milwaukee, St. Louis, Cleveland, Cincinnati, and Mobile.

**Listing
No. 7**

CRUISES TO VENEZUELA, TRINIDAD AND SURINAM

Round Trip \$625

About 30 Days

From New York, fortnightly sailings by chartered European flag vessels, most having outside accommodations with private facilities for 12 passengers. Public rooms usually include passenger lounges and dining rooms. Calls are generally made at Baltimore; La Guaira, Puerto Cabello, Maracaibo and Guanta, Venezuela; Trinidad, W. I.; Surinam, including Paramaribo and bauxite mines in interior of Surinam, then a second call at Trinidad and return to New York. Optional ports are often added in both directions. **Cruise fare:** \$625 per person. One-way passage offered only when space is available. Rates on request.

Alcoa Steamship Company, Inc., 17 Battery Place, New York 4; One Canal St., New Orleans 12. Branch offices in Chicago, Milwaukee, St. Louis, Cleveland, Cincinnati and Mobile.

Make reservations for your trip
THROUGH A SPECIALIST IN FREIGHTER TRAVEL
See Directory Section, pages 11 to 16

**Listing
No. 8**

CARIBBEAN CRUISES

Round Trip \$295 13 Days

From New York, sailings every week by modern American flag all-container cargo ships Santa Eliana and Santa Leonor, each 504 feet long and 8100 tons dead weight. Accommodations for 12 passengers in four outside staterooms, each with private bath. There is a comfortably furnished passenger lounge with radio and taped music, an attractive dining room where passengers take their meals with the ship's officers, and ample deck space for games and lounging. Calls are made at La Guaira, Puerto Cabello and Maracaibo in Venezuela, South America. There is ample time for sightseeing and shopping at each port. American cuisine. Cruise fare \$295. One-way fare between New York and Venezuela \$180.

Grace Line, 3 Hanover Square, New York 4; 141 W. Jackson Blvd., Chicago; Henry Oliver Bldg., Pittsburgh; 1507 K St., N.W. Washington 4; 2 Pine St., San Francisco 11; 523 W. Sixth St., Los Angeles 14; 408 White Bldg., Seattle; 751 Victoria Square, Montreal, Canada. Agents and offices in all principal cities.

**Listing
No. 9**

**CRUISES TO THE WEST INDIES
PANAMA CANAL AND CENTRAL AMERICA**

From New York, weekly sailings by modern freighters carrying 12 passengers. Outside cabins with private shower and toilet. Some ships have both double and single cabins, others only doubles. All ships have a comfortable lounge and dining room. Passports are not required of U. S. citizens. A smallpox vaccination certificate not over three years old is required of all passengers.

Trip No. 1: Cruises to the Panama Canal and Ecuador. 16 days. Weekly sailings to Cristobal, Canal Zone and Puerto Bolivar or Guayaquil, Ecuador, returning to New York. Double cabins only. On southbound voyage passengers are disembarked at Cristobal, transferred overland across the Isthmus and re-embarked by launch at Balboa on Pacific side. Transfers and necessary meals ashore are included in passage fare. On return voyage passengers transit the Canal aboard steamer. **Cruise fare: \$385 per person.**

Trip No. 2: Cruises to Jamaica and Honduras. 12 days. Weekly sailings to Kingston, Jamaica and Puerto Cortes, Honduras, returning to New York. Outside double and single cabins with private shower and toilet. **Cruise fare: \$295 per person in double cabins, \$330 in single cabins.**

Trip No. 3: Excursions to the Panama Canal. Weekly sailings direct to Cristobal, Canal Zone where passengers are disembarked and remain ashore about five days at their own expense until arrival of northbound steamer for return trip. The round trip takes 15-16 days. Double cabins only. **Round trip excursion fare: \$275 per person.**

United Fruit Company, Pier 3, North River, New York 6.

**Listing
No. 11**

**BRITISH WEST INDIES
AND AMAZON RIVER PORTS**

From New York, monthly sailings by British freighters of 1,090 to 1,565 gross tons, each with accommodations for six passengers in three outside two-berth cabins. Bathroom facilities are conveniently located. The itineraries of these vessels vary according to cargo requirements and they do not call at all ports listed on every voyage. Schedules for each voyage are made up about 30 days in advance and may be obtained upon

FROM ATLANTIC COAST PORTS

request. Fares: One-way to Antigua, St. Kitts and Dominica, \$175; St. Lucia, Barbados, Grenada and Trinidad, \$200; Georgetown (British Guiana) \$225; Belem, Brazil (Amazon River) \$270; Manaus, Brazil (Amazon River) \$300; Iquitos, Peru (Amazon River) \$378.

The voyage to Iquitos is unique in that this city of 34,000 population is 2,300 miles from the mouth of the Amazon River, and is the farthest inland port of any considerable size in the world reached by ocean vessels.

Booth Line, Booth American Shipping Corp., Agents, 17 Battery Place, New York 4.

Listing

No. 12 VOYAGES FROM CANADA TO THE CARIBBEAN

From Montreal and Halifax (April to November) and from Saint John and Halifax (December to March), two or three sailings weekly by modern freighters carrying up to 12 passengers. These trips offer the ultimate for those who have the time and are seeking a restful voyage to some of the most colorful and picturesque ports of the Caribbean. Accommodations are of three classes: "A," "B" and "C," varying from simple to luxurious. The M.Vs Sunflower, Sunprincess and Indiana and the S.S. Sunvictor and similar type vessels have spacious and well-appointed double and single cabins with private shower and toilet. Also in this class are the M.Vs Sunadele and Sunamelia, rated among the finest freighters afloat. They have excellent accommodations including a luxuriously-appointed lounge and bar and a smartly decorated dining room offering the best in cuisine.

Round trips are made up calling at five to seven of the following ports on three and occasionally four different itineraries: Antigua, Bahamas (Nassau), Barbados, Bermuda, British Guiana (Georgetown and Mackenzie River), Cuba (Santiago), Dominican Republic (Santo Domingo), Dominica, Grenada, Haiti, Jamaica, Montserrat, Canal Zone (Cristobal), St. Kitts, St. Lucia, St. Vincent, Trinidad, Venezuela (La Guaira, Maracaibo, Puerto Cabello). No second calls are made at any ports except occasionally at Trinidad, and the northbound voyage (April to November) is generally direct from the last Caribbean port to Port Alfred, Quebec before terminating at Montreal. During the winter season, northbound voyages are direct from last Caribbean port to either Saint John, N. B., or Halifax, N. S.

Basic round trip fares (subject to change on short notice):

April to end November	Fares per person	Approximate duration
From Montreal	\$500 to \$695	36 to 40 days
" Halifax	\$470 to \$665	30 to 36 days
December to end March		
From Saint John	\$450 to \$575	26 to 36 days
" Halifax	\$415 to \$530	23 to 26 days

Itineraries are established in accordance with inducement of cargo offered and therefore variations are often necessary. One-way passages may be arranged, but priority is given to passengers making the round trip.

Saguenay Shipping Limited, 106 University St., Montreal, P.Q., Canada.

Make reservations for your trip
THROUGH A SPECIALIST IN FREIGHTER TRAVEL
See Directory Section, pages 11 to 16

**Listing
No. 13****PUERTO RICO**

Sailings from New York every Friday P.M., arriving San Juan Tuesday A.M.; leave San Juan Thursday P.M., arrive Baltimore Monday A.M. U. S. flag C-2 type vessels built 1942-45. Accommodations for 12 passengers in cabins with two single beds and private facilities. Public lounge. No alcoholic liquors sold on board. American cuisine. Passenger fares: Between New York and San Juan or San Juan and Baltimore, \$130.

Bull Lines, A. H. Bull & Co., 115 Broad St., New York 4.

**Listing
No. 14****HONDURAS**

From New York, sailings twice weekly during summer months and weekly during remainder of year. Chartered freighters of various nationalities carrying up to 12 passengers in outside cabins, mostly with private facilities. The voyage is direct to La Ceiba, Honduras, where vessels stay about two days. A novel jungle trip is customarily scheduled for passengers at no additional cost. The return voyage to New York is usually via Charleston, S.C. The round trip takes 11 to 12 days. Passenger fares: Round trip from \$300, with bath; from \$275 without bath.

Standard Fruit & Steamship Company, Pier 13 East River, New York 5.

**Listing
No. 16****VOYAGES TO THE CARIBBEAN
AND SOUTH AMERICA**

From New York, sailings weekly by modern Dutch flag freighters of approximately 2,000 to 3,500 gross tons. Although comparatively small in size these vessels are well-kept and have very comfortable accommodations for up to 12 passengers. Some ships have single and twin-bedded cabins with private shower and toilet, others have cabins with upper and lower berths and equipped with hot and cold running water. Most ships have a lounge and a dining salon, others have a combination lounge-dining salon. Illustrated folders showing passenger accommodations on all ships will be mailed upon request. Note: The higher fares quoted below are for accommodations with private shower and toilet, lower fares quoted are for accommodations without these facilities. Transit time from New York shown in parenthesis.

Curacao-Venezuela service. Fortnightly from New York to Curacao (5 days), Aruba (6 days), La Guaira (7 days), Maracaibo (10 days), Puerto Cabello (11 days) \$190/\$150; Trinidad (14 days) \$230/\$190.

Haiti-Orinoco service. Fortnightly from New York to Curacao (5 days) \$140/\$110; Maracaibo (8 days), Puerto Cabello (9 days) \$190/\$150; Trinidad (12 days), Ciudad Bolivar (14 days) \$230/\$190.

Curacao-Guianas service. Fortnightly from New York to Curacao (5 days), Aruba (6 days), La Guaira (7 days) \$190/\$150; Guanta (9 days) \$230/\$190; Georgetown (12 days), Paramaribo (14 days) \$260/\$210; Carupano (17 days), Puerto Sucre (17 days) \$290/\$230; thence return to New York via Jacksonville. Round trip fare, \$525 (33 days).

Hispaniola-Jamaica service. Fortnightly from New York to Santo Domingo (5 days), Port au Prince (7 days), Cap Haitien (8 days), sometimes Turks Island (9 days), Kingston (9 or 11 days) \$140/\$110.

Royal Netherlands Steamship Company, Holland-America Line, Dutch World Services, General Passenger Agents, Pier 40, North River, New York 14.

**Listing
No. 16A****CARIBBEAN CRUISES**

Fare from \$445 Time: 18 Days

From New York, sailings every Friday by modern American flag air-conditioned combination cargo-passenger vessels carrying 52 passengers. Cabins, each with private bath, are convertible into daytime living rooms. Dining room, lounge and cocktail bar are in forward part of ship overlooking the sea; a veranda cafe at after end serves as a setting for tea, bridge and after-dinner movies. An outdoor tiled swimming pool is a center of activity. Usual ports of call include **Santo Domingo**, Dominican Republic; **Puerto Cabello**, **La Guaira** and **Maracaibo**, Venezuela; **Barranquilla** and **Cartagena**, Colombia, and **Guanta**, Venezuela on alternate weeks.

Minimum cruise fares. Regular season (December 19 to January 22 and March 6 to April 23) \$495. Winter season (January 23 to March 5) \$595. Spring and fall season (August 29 to December 18 and April 24 to June 11) \$445. **One-way fares:** Between **New York and Venezuela** (December 19 to April 23) \$305, (August 29 to December 18 and April 24 to June 11) \$275. **New York to Colombia** (December 19 to April 23) \$335, (August 29 to December 18 and April 24 to June 11) \$300. **Round trip:** 10% reduction from two one-way fares. Tickets must be purchased in advance.

Grace Line, 3 Hanover Square, New York 4; 141 W. Jackson Blvd., Chicago; Henry Oliver Bldg., Pittsburgh; 1507 K St., N.W., Washington 5; 2 Pine St., San Francisco 11; 523 W. Sixth St., Los Angeles 14; 408 White Bldg., Seattle; 751 Victoria Square, Montreal, Canada. Agents and offices in all principal cities.

**Listing
No. 16B****WEST COAST OF SOUTH AMERICA**

From New York, fortnightly sailings to **Callao (Lima)**, Peru, also monthly sailings to **Valparaiso**, Chile, with calls at other ports in Panama, Colombia, Ecuador, Peru and Chile according to vessel's cargo requirements. American flag C-2 type freighters with accommodations for eight to 12 passengers in outside two-and three-berth cabins, all with private shower and toilet.

Passenger fares: 47-day round trip voyages to **Callao (Lima)**, Peru, \$666. 47-day round trip voyages to **Valparaiso**, Chile, \$810. **One-way fares:** **New York to Panama Canal**, \$180; **Buenaventura**, Colombia, \$250; **Guayaquil**, Ecuador, \$290; **Talara**, Peru, \$315; **Salaverry**, Peru, \$340; **Callao (Lima)**, Peru, \$370; **Mollendo**, Peru, \$400; **Arica**, Chile, \$415; **Tocopilla**, Chile, \$430; **Antofagasta**, Chile, \$435; **Chanaral**, Chile, \$440; **Valparaiso**, Chile, \$450. **Round trip:** 10% reduction from two one-way fares when tickets are purchased in advance.

Grace Line, 3 Hanover Square, New York 4; 141 W. Jackson Blvd., Chicago; Henry Oliver Bldg., Pittsburgh; 1507 K St., N. W., Washington 5; 2 Pine St., San Francisco 11; 523 W. Sixth St., Los Angeles 14; 408 White Bldg., Seattle; 751 Victoria Square, Montreal, Canada. Agents and offices in all principal cities.

**Listing
No. 17A****VOYAGES TO PANAMA AND ECUADOR**

From New York, weekly sailings by company owned and chartered freighters carrying up to 12 passengers. Accommodations include outside double and single cabins and suites, all with private facilities. Ships have a lounge and dining room. A day ashore at the **Panama Canal** as the ship makes its transit of the Canal is usually part of the program. The voyage then continues to **Guayaquil** and **Puerto Bolivar**, Ecuador. North-bound vessels transit the Canal without stop, proceed to **New York** via **Charleston**, S. C.

FROM ATLANTIC COAST PORTS

Round trip takes 19-20 days. Passenger fares: Round trip from \$475 per person in cabins with private bath; from \$425 without bath.

Standard Fruit & Steamship Co., Pier 13, East River, New York 5.

**Listing
No. 18**

**ALL-EXPENSE CASUAL CRUISE-TOURS
TO WEST COAST OF SOUTH AMERICA**

From New York, sailings every Friday by modern air-conditioned American flag combination cargo-passenger liners carrying 52 passengers. All outside staterooms with private bath. Dining room, lounge and bar together extend across forward part of ship; a veranda cafe at after end serves as a setting for tea, bridge, and after-dinner movies. There is an outdoor tiled swimming pool and ample space for deck games. Carefree informality is the order of the day on these ships. You can be as active or as luxuriously lazy as you like, there is no planned entertainment, no bother about formal attire or dressing for dinner. The route covers the Panama Canal Zone, Colombia, Ecuador, Peru and Chile (Bolivia) and, on alternate weeks, Haiti southbound.

All-Expense Jewel Box Casual Cruise-Tours are operated in connection with this service—to Panama, Colombia, Ecuador and Peru. Six of these special tours varying in length from 26 to 31 days sail every fortnight. In addition to ports along the way, itineraries include capital cities, tourist and commercial centers in the interior including Lima, Peru, Bogota and Medellin, Colombia, Quito, Ecuador and others—offering a wide variety of scenic and sightseeing attractions, sports, diversions and shopping thrills as can be found anywhere in the world.

Minimum all-expense rates:

June 1 to Aug. 15, 1963	Mar. 6 to May 31, 1963
26-day \$ 925	Aug. 16 to Dec. 31, 1963
31-day 1135	26-day \$ 800
	31-day 1010

Round trip voyages also are offered to Chile, one of the most fantastically beautiful countries on the west coast. The route covers Haiti, Panama, Colombia, Ecuador and Chile (Bolivia). Minimum fares from New York to Valparaiso, January 1 to February 28, \$645; March 1 to May 31, \$475; June 1 to December 31, \$595.

Grace Line, 3 Hanover Square, New York 4; 141 W. Jackson Blvd., Chicago; Henry Oliver Bldg., Pittsburgh; 1507 K St., N. W., Washington 5; 2 Pine St., San Francisco 11; 523 W. Sixth St., Los Angeles 14; 408 White Bldg., Seattle; 751 Victoria Square, Montreal, Canada. Agents and offices in all principal cities.

**Listing
No. 20**

CANADA TO ENGLAND AND IRELAND

From Montreal between April and December and from Saint John, N.B. during the winter months, fortnightly sailings by British freighters carrying four to 12 passengers. Outside double and single cabins with and without private facilities. Passengers are booked to first United Kingdom port, usually Belfast or Liverpool, according to cargo commitments. Passenger fares: In double cabin with private facilities, \$175 per person; in double cabin without facilities (few available) \$150 per person; in single cabin without facilities, \$165.

Head Line and Lord Line, McLean Kennedy, Ltd., Agents, P.O. Box Place D'Armes 1115, Coristine Bldg., Montreal 1, Que.

**Listing
No. 20A**

ENGLAND

From Jacksonville/Charleston/Savannah/Baltimore or Norfolk, sailings once a month to Manchester, England, by modern British freighters of approximately 5,500 to 7,500 gross tons with accommodations for 12 passengers. Outside single and double cabins with lower beds. Each cabin has hot and cold running water, bathroom facilities are conveniently located. There is a comfortable lounge where movies are shown, and an attractive dining room. Automobiles carried, rates furnished on request. Voyage from last port takes about 12 days.

Passenger Fares: To Manchester from Jacksonville, Charleston or Savannah, \$266 per person all year; from Norfolk or Baltimore, \$220 per person all year.

Manchester Liners Limited, Furness, Withy & Co., Limited, Agents, 34 Whitehall St., New York 4; 110 South Dearborn St., Chicago; 434 Boush St., Norfolk.

**Listing
No. 22**

CANADA TO ENGLAND

From Montreal, sailings every week, April to end November, and from Halifax, December to end March. Passengers are disembarked at first port of call, usually Avonmouth, occasionally Newport or Swansea, all Bristol Channel ports. Modern freighters carrying up to 12 passengers. Outside double and single cabins and suites of three classes: "A," "B" and "C," varying from simple to luxurious.

Passenger fares per persons:

	April to end Aug.	Sept. to end Nov.	Dec. to end Mar.
Suites	\$230	\$210	\$170
Class "A" single cabins	\$215	\$200	\$160
Class "A" double "	\$205	\$175	\$145
Class "B" " "	\$180	\$165	\$135
Class "C" " "	\$145	\$130	\$110

Note: Class "C" accommodations are seldom available.

Saguenay Shipping Limited, 1060 University St., Montreal, P. Q., Canada.

**Listing
No. 22A**

CANADA TO ENGLAND

From Montreal (April to November) and from Saint John, N.B. (November to April), weekly sailings to Manchester, England. British freighters of 7,278 to 9,296 gross tons with accommodations for 12 passengers. Outside single and double cabins, both with and without private shower and toilet. Lounge and dining room. The voyage takes nine days. Fares: Per person in cabins with hot and cold running water (April to November) \$205, (November to April) \$180. In double cabins with private shower and toilet (all year rates) \$7 per person additional, in single cabins with private shower and toilet \$4.50 per person additional. Return fares: 10% reduction during low season (November to April) only.

Manchester Liners Ltd., Furness, Withy & Co., Ltd., Agents, 315 St. Sacramento St., Montreal 1.

**Listing
No. 22B**

CANADA TO ENGLAND, SCOTLAND

From Montreal (April to December) and Saint John, N.B., (December to March). Sailings every two weeks to a northeast coast United Kingdom port, usually Newcastle or Leith. Westbound sailings are normally from Grangemouth, but occasionally from Middlesborough or Newcastle, depending on cargo requirements. British freighters Cairngowan and Cairndhu, both of 9,200 gross tons and carrying 12 passengers. Outside single and double cabins with private and connecting facilities. Vessels also have a suite for which there is a surcharge of \$6.00 per person. Dining room and lounge with bar. The voyage takes about nine days. **Fares:** (Low season) One-way \$178; half round trip \$160; westbound emigrant between January 1 and July 15, \$160. (High season) One-way or half round trip, \$200. Children from one to 12 years of age half-fare.

Cairn-Thompson Line, Furness, Withy & Company, Ltd., Agents, 315 St. Sacrament St., Montreal 1, Canada.

**Listing
No. 23**

ENGLAND, FRANCE AND GERMANY

From New York, weekly sailings by American flag freighters carrying up to 12 passengers. Outside two and three-berth cabins with private shower and toilet. Some ships have a combination lounge and dining room, others a dining room and glass-enclosed veranda lounge. Passengers take their meals with the ship's officers. The food is of good quality, well prepared, and menus are varied. **Passenger fares:** Number of days in transit shown in parenthesis. Lower rates apply from August 23 to April 14 inclusive, higher rates apply from April 15 to August 22 inclusive. From New York to Liverpool (9 days) \$196.50-\$220.00; Cherbourg (9 days) \$207.00-\$230.00; Rotterdam, \$212.50-\$235.00; Bremerhaven (10 days) \$223.50-\$245.00. Passengers landing in France are subject to French Port Tax, \$6.50. Passengers are booked eastbound only, but company will try to arrange return passage at time eastbound reservation is made. Children under 12 years of age or infirm persons not accepted.

United States Lines, 1 Broadway, New York 4.

**Listing
No. 24**

FRANCE

From New York, weekly sailings direct to Havre by Norwegian freighters Helna, Horda, Ronda and Egda, each of approximately 8,300 gross tons. Accommodations for 10 to 12 passengers in outside single and double cabins with and without private facilities. Vessels have a lounge and dining room. The voyage takes nine days. Norwegian cuisine. **Fares:** April 1 to August 31, \$225; September 1 to March 31, \$200.

Cosmopolitan Line, Cosmopolitan Shipping Co., 42 Broadway, New York 4.

**Listing
No. 25**

CANADA TO HOLLAND, BELGIUM

From Quebec City from April to December and from Saint John, N.B., during winter months, sailings about every 10 days by German flag freighters of 5,000 to 12,000 deadweight tons built 1945-54. Accommodations for up to 12 passengers in outside double and single cabins, most with private shower and toilet. There is a combination lounge-dining room. German cuisine. Persons under three years or over 70 years of age are not accepted. Eastbound passengers disembark at first European port, Rotterdam or Antwerp. Westbound passengers usually embark at Hamburg and disembark

FROM ATLANTIC COAST PORTS

at Quebec City or Montreal. The voyage takes about 10 days. Passenger fares: East-bound \$200, westbound \$235. Round trip fare \$369.75 when tickets are purchased in advance. Winter round trip \$285. Children three to 10 years of age half-fare.

Poseidon Lines, March Shipping Agency Limited, General Agents, 751 Victoria Square, Montreal, Que.

Listing

No. 25A

BELGIUM, HOLLAND, GERMANY

From Norfolk or other Atlantic Coast port, sailings monthly to a port in Belgium, Holland or Germany according to cargo requirements. Definite schedules are established about 30 days in advance and may be obtained upon request. There is only one vessel presently in this service: the modern Swiss flag freighter M.V. Regina, 13,352 dead-weight tons, built 1958, carrying seven passengers. All accommodations are outside and consist of an owner's suite with sitting room and double bedroom with private bath, one double cabin with private facilities, one single cabin with private facilities and two single cabins without facilities. There is a comfortable lounge and dining room. Continental cuisine. The voyage takes about 14 days. No age limit. **Note to Travel Agents:** No commission allowed on bookings. Passengers are booked from last Atlantic Coast to first Continental port. Passenger fares per person: In Owner's Suite \$150, in cabins with private facilities \$120, in cabins without facilities \$110.

Swiss Shipping Co., Ltd., Rohner, Gehrig Shipping Corp., General Agents, One Whitehall St., New York 4. For westbound reservations contact Alpina Transports et Affretements S.A., Ankerrui 2, Antwerp, Belgium.

Listing

No. 25B CANADA TO GERMANY, HOLLAND, BELGIUM

From Montreal to Hamburg, Rotterdam, Antwerp and/or Bremen, sailings weekly from April to November. Modern German freighters of approximately 2,500 to 2,900 gross tons with accommodations for six to 12 passengers. Outside single, double and triple-berth cabins with and without private shower and toilet. Some ships have an additional suite consisting of sitting room and bedroom with private bath for which there is an additional charge. All ships have a comfortable lounge and dining room. German cuisine. The voyage takes about 10 days.

Passenger Fares: Higher fares shown apply to eastbound sailings April 15 to August 22 and westbound sailings June 22 to October 31. Lower fares shown in parenthesis are effective during off-season. Fares are in U.S. dollars per adult. Single cabins with private shower and toilet \$290 (\$270), single cabins without facilities \$215 (\$196); per person in double cabins with private shower and toilet \$235 (\$215).

Hamburg-American Line and North German Lloyd (joint service). United States Navigation Co., Inc., Agents, 17 Battery Place, New York 4; Montreal Shipping Co., Ltd., 410 St. Nicholas St., Montreal, Canada.

Listing

No. 26

BELGIUM, HOLLAND AND GERMANY

From Charleston, Savannah, Jacksonville and Tampa, sailings twice monthly by modern German freighters with accommodations for a maximum of 12 passengers. Outside double and single cabins with and without private shower and toilet, also suites. Most vessels have a comfortable lounge with bar, dining room and sun deck. German cuisine. Voyage from last port (usually Charleston) to Antwerp take 14-15 days.

FROM ATLANTIC COAST PORTS

Passenger Fares: To Antwerp/Rotterdam, \$220-\$240 in double cabin with private facilities. To Bremen/Hamburg, \$240-\$260 in double cabin with private facilities. Cabins without private facilities 10% less. Single cabins \$40 additional. Rate in suite is 50% additional to normal fare. 10% reduction on round trip. 25% reduction on special off-season excursion fare which gives passengers up to 21 days ashore.

Ozean Stinnes Line, Biehl & Co., General Agents, 442 Canal St., New Orleans 16.

Listing

No. 27 CANADA TO ENGLAND, FRANCE, HOLLAND

From Montreal and Toronto between May and December and from Saint John, N.B. during the winter months. Frequent sailings by Dutch vessels of two types as described below:

Passenger-cargoliners Prinses Margriet (9,336 gross tons, built 1961) and Prinses Irene (8,533 gross tons, built 1959) each carry about 100 passengers, all in one class. All cabins are outside and include single, double, triple and quadruple-berth cabins, almost all with private bath or shower and toilet. Public rooms include a lounge, dining room, glass-enclosed veranda, bar, sports and sun decks. Both ships are air-conditioned. The Prinses Margriet is stabilizer-equipped. A competent doctor is carried on both ships. There is no age limit for passengers. The voyage from Montreal to Plymouth, England takes seven days, to Havre eight days, to Rotterdam 10 days. Minimum one-way fares: From Montreal: During Thrift Season to Plymouth, U.S. \$247; to Havre, U.S. \$255; to Rotterdam U.S. \$258. During Summer Season to Plymouth, U.S. \$285.50; to Havre, U.S. \$293.50; to Rotterdam, U.S. \$296.50. Fares from Toronto are higher.

Passenger-carrying freighters of approximately 2,700 to 7,000 deadweight tons, carrying four to 12 passengers. The Prins Wm. Van Oranje, Prins William George Frederik, Prins Casimir and Prins Willem II have superior accommodations in outside twin-bedded cabins, all with private facilities. The Prins Willem V has outside twin-bedded cabins without private facilities; other ships have outside cabins with lower and upper berths. Cabins on all ships are equipped with hot and cold running water. All ships have a combination lounge-dining room. These ships do not carry a doctor aboard. Passengers under nine years or over 65 years of age are not accepted. The voyage from Montreal to London or Havre takes approximately 11 days, to Rotterdam approximately 14 days. One-way fares vary according to ship and accommodations, from \$184 to \$228. Port charges are additional.

Oranje Line, Holland-America Line, Agents, Dominion Square Bldg., 1245 Peel St., Montreal 2, Que., Canada and other Holland-America Line offices in principal cities in U.S.A. and Canada.

Listing

No. 28 BELGIUM, HOLLAND AND GERMANY

From New York, weekly sailings by latest type German flag express freighters carrying up to 12 passengers. Spacious and comfortable outside single and double cabins with private shower and toilet facilities. German cuisine. Accommodations, food and service have a good rating. Voyage to Germany takes about 12 days. Round trip reservations may be made. Vessels call at Antwerp, Rotterdam, and Hamburg or Bremen.

Passenger Fares: Per person in double cabin to Antwerp, Hamburg, Rotterdam and Bremen or vice versa during summer season \$240-\$260, during off-season \$221-\$240; in single cabin during summer season \$290, during off-season \$240-\$270. Children under 12 half-fare. Automobiles carried, rates on request.

Hamburg-American Line and North German Lloyd (joint service), United States Navigation Company, Inc., General Agents, 17 Battery Place, New York 4.

**Listing
No. 29**

BELGIUM

From New York, weekly sailings to Antwerp by Norwegian freighters of approximately 5,500 gross tons. Accommodations for 8 to 12 passengers in outside two-berth cabins, mostly with private shower and toilet. Norwegian cuisine. The voyage takes about 9 days. Westbound ships sail from Rotterdam. Fares: \$225 per person during on-season, \$175 during off-season. Eastbound off-season is August 1 through April 30; westbound is November 1 through July 31.

Black Diamond Line, Black Diamond Steamship Corp., 2 Broadway, New York 4.

**Listing
No. 29A**

BELGIUM

From New York, weekly sailings to Antwerp by Dutch cargo liners with superior accommodations for 12 passengers. Outside double and single cabins with private bath or shower. All ships have a tastefully decorated lounge and dining room and there is ample deck space. Continental cuisine, attentive service and immaculate Dutch shipkeeping. Passenger fares: Summer season \$250-\$280, thrift season \$230-\$260.

Red Star Line, Holland-America Line, Pier 40, North River, New York 14.

**Listing
No. 30**

BELGIUM

From New York, weekly sailings to Antwerp by Norwegian freighters of 4,943 to 9,894 gross tons with accommodations for 12 passengers. Outside double cabins and suites, all with private facilities. Vessels have an attractive lounge with bar, dining room, smoking room, sun deck. The voyage takes nine to ten days. Norwegian cuisine. Passengers under three years and over 70 years of age are not accepted. Fares: Off-season, \$210 per person in cabins, \$245 up in suites. On-season, \$230 per person in cabins, \$265 up in suites.

Meyer Line, Boyd, Weir & Sewell, Inc., General Agents, 24 State St., New York 4.

**Listing
No. 31**

BELGIUM

From New York, sailings every 10 days to Antwerp by Belgian freighters of latest "LU" type and older Victory-type, all carrying 12 passengers. The "LU" type vessels have outside double and single cabins with private shower and toilet; lounge and dining room. Older Victory-type vessels are for persons desiring lower-cost travel. These vessels have outside double cabins with hot and cold running water; combination lounge-dining room. Continental cuisine. Vessels of both types take about nine days for the voyage between New York and Antwerp.

Passenger Fares: Eastbound. April 15-August 22 in "LU" type vessels \$247, in Victory type vessels \$215; August 23-April 14 in "LU" type vessels \$227, in Victory type vessels \$184. Westbound. June 22-October 31 in "LU" type vessels \$247, in Victory type vessels \$215; November 1-June 21 in "LU" type vessels \$227, in Victory type vessels \$184. Round trip good for 12 months, 10% reduction during off season, no reduction in season.

Belgian Line, Compagnie Maritime Belge S.A., 67 Broad St., New York 4.

**Listing
No. 32****NORWAY, SWEDEN, DENMARK,
FINLAND AND POLAND**

From New York, weekly sailings by modern U.S. flag freighters carrying up to 12 passengers. Spacious and comfortably furnished outside twin-bedded cabins with private shower and toilet. Passengers are carried to **Bergen, Oslo, Gothenburg, Copenhagen, Stockholm, Helsinki and Gdynia**. Schedules for each voyage are established about 30 days prior to departure and may be obtained upon request. The round trip to Scandinavia takes about 45 days.

Passenger Fares: To Bergen, Oslo, Gothenburg, and Copenhagen (summer season) one-way \$270, round trip \$540, (winter season) one-way \$210, round trip \$378; to Stockholm, Helsinki, Gdynia (summer season) \$320, round trip \$640, (winter season) one-way \$265, round trip \$477. Rate for single occupancy of any two-birth cabin is one and one-half fares.

Moore-McCormack Lines, Inc., 2 Broadway, New York 4; 611 Wilshire Blvd., Los Angeles 17; 214 California St., San Francisco 11.

**Listing
No. 33****SCANDINAVIA AND NORTH EUROPE**

From Savannah or Jacksonville, frequent sailings by modern Norwegian and Swedish freighters carrying a maximum of 12 passengers. Outside double and single cabins, most with private shower and toilet; some vessels also have suites for which there is an additional charge. Public rooms include a well-appointed lounge and dining room. Scandinavian cuisine. Passengers are booked to first port in Northern Europe (usually Antwerp) or first Scandinavian port (usually **Oslo or Gothenburg**). For sailing dates consult your Travel Agent. See Directory Section, pages 11-16.

Passenger fares from Philadelphia, Baltimore or Newport News to Scandinavia, in season (April 15 to August 22) \$220-\$235 depending on type of ship; off-season (remainder of year) \$180-\$200. Wilhelmsen Lines, Barber Steamship Lines, General Agents for North Atlantic, 17 Battery Place, New York 4.

Passenger fares from Savannah or Jacksonville to Northern Europe. Wilhelmsen Lines: In-season (April 15 to August 22) \$250 in double cabin, off-season \$225. Passengers may remain beyond first port, if desired, on a per diem basis (\$7.00). Single cabins are available on Wilhelmsen vessels at 10% additional fare. A special suite is also available on Wilhelmsen vessels at 25% additional fare. **Swedish American Line:** Eastward season (April 22 to August 15), \$315 in cabin with private bath, \$280 in cabin without bath; during remainder of year \$278 in cabin with private bath, \$243 in cabin without private bath. Only double rooms available on Swedish ships. The voyage to the Continent takes 11 to 13 days.

Passenger fares from Savannah or Jacksonville to Scandinavia (usually Oslo or Gothenburg via Rotterdam, Hamburg/Bremen). Wilhelmsen Line: In-season \$275 per person in double cabin, off-season \$250. Wilhelmsen Line grants a rebate of 10% on return trips completed within one year. **Swedish American Line:** During eastward season, \$340 per person in cabin with private bath, \$305 in cabin without private bath; during remainder of year, \$300 in cabin with private bath, \$268 in cabin without private bath. On vessels without private bath, two cabins share one bath (consists of two rooms, bath and toilet, conveniently located). Conditions and reduced rates for round trips by Swedish American Line only (valid during off-season only) furnished upon request. The voyage to Scandinavia takes 17 to 19 days.

Wilhelmsen/Swedish American Line, Joint service from Savannah and Gulf ports to North Europe and Scandinavia; Strachan Shipping Company, General Agents, 1607 American Bank Bldg., New Orleans 12, La.