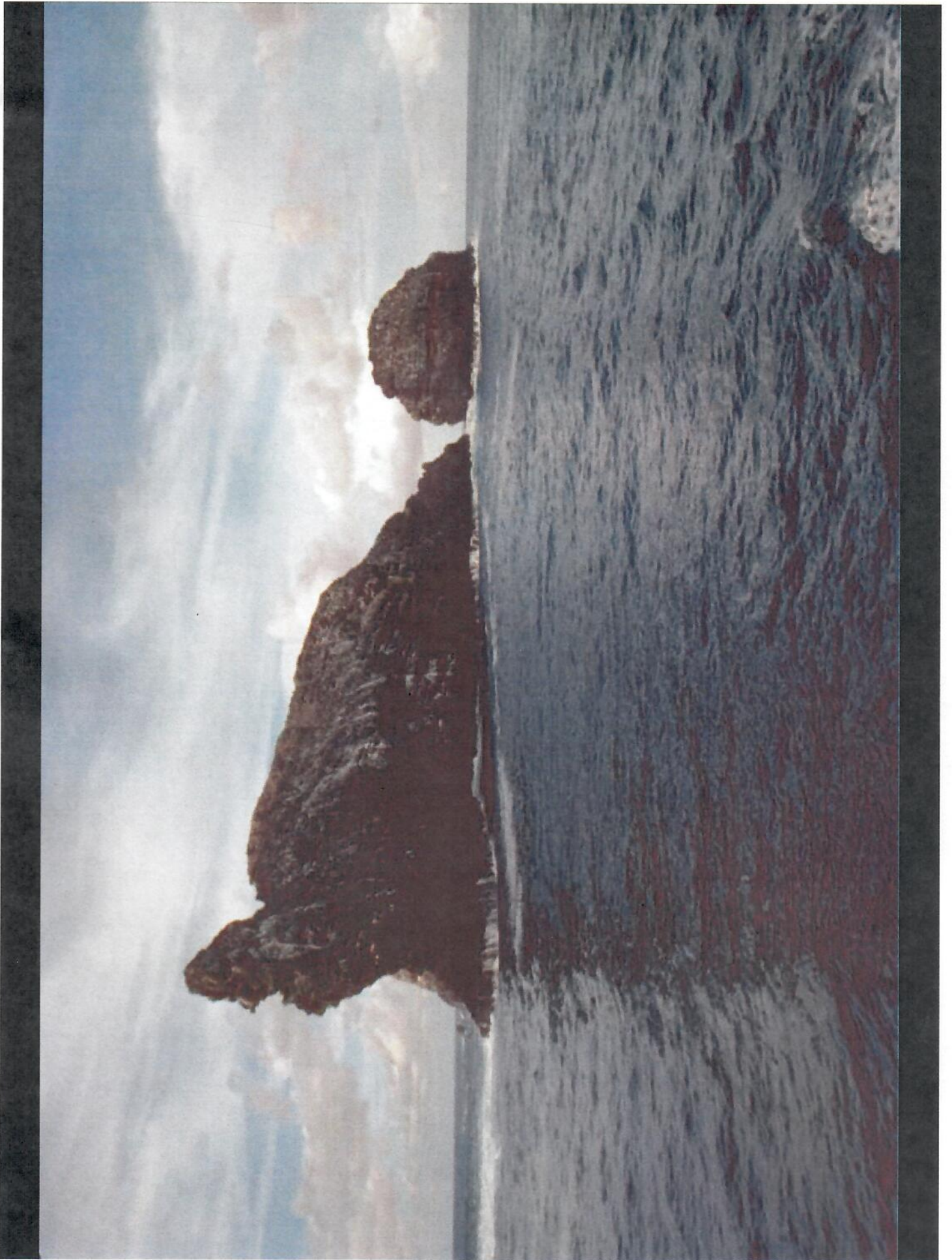




WALK SOFTLY





















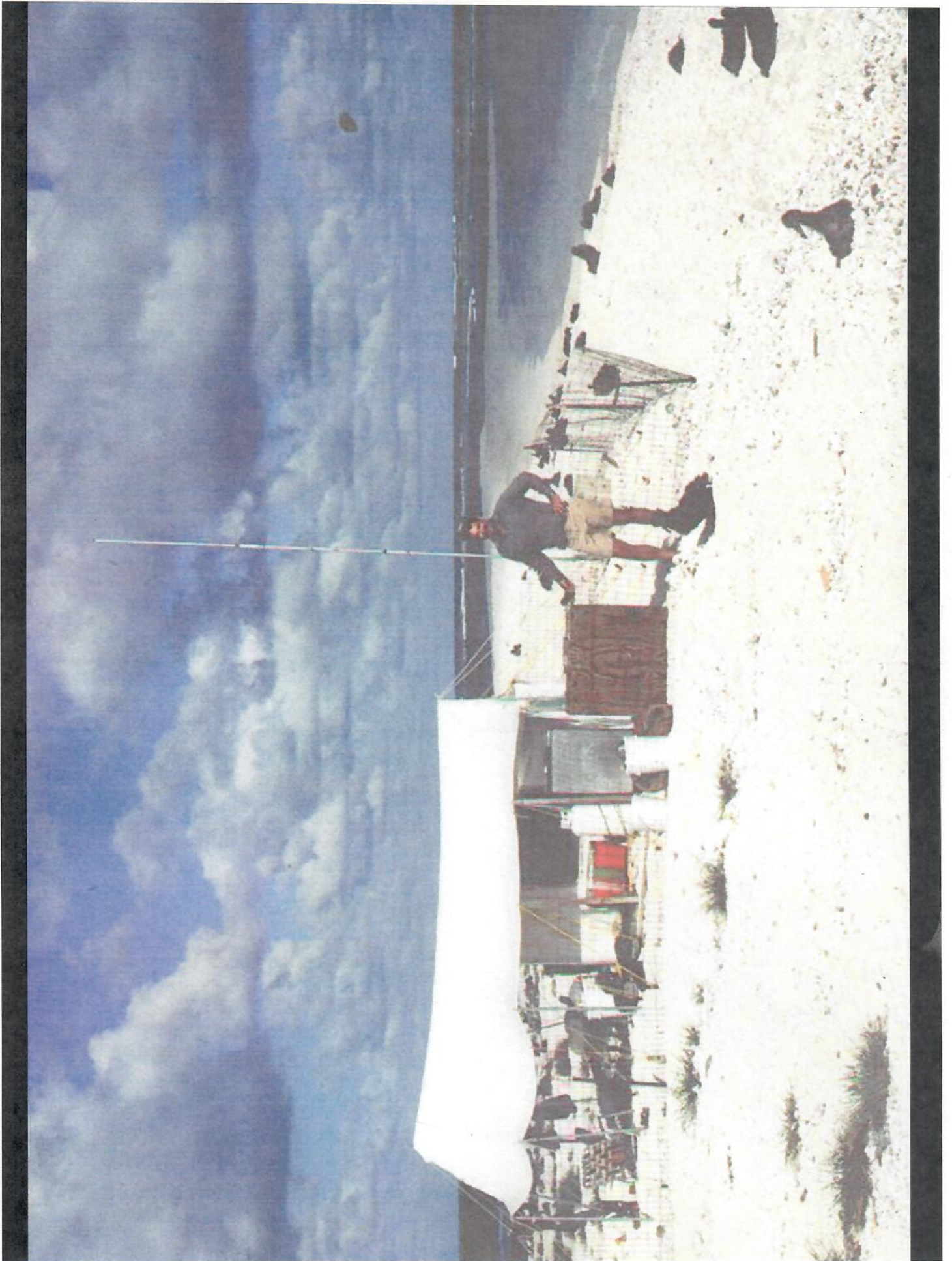








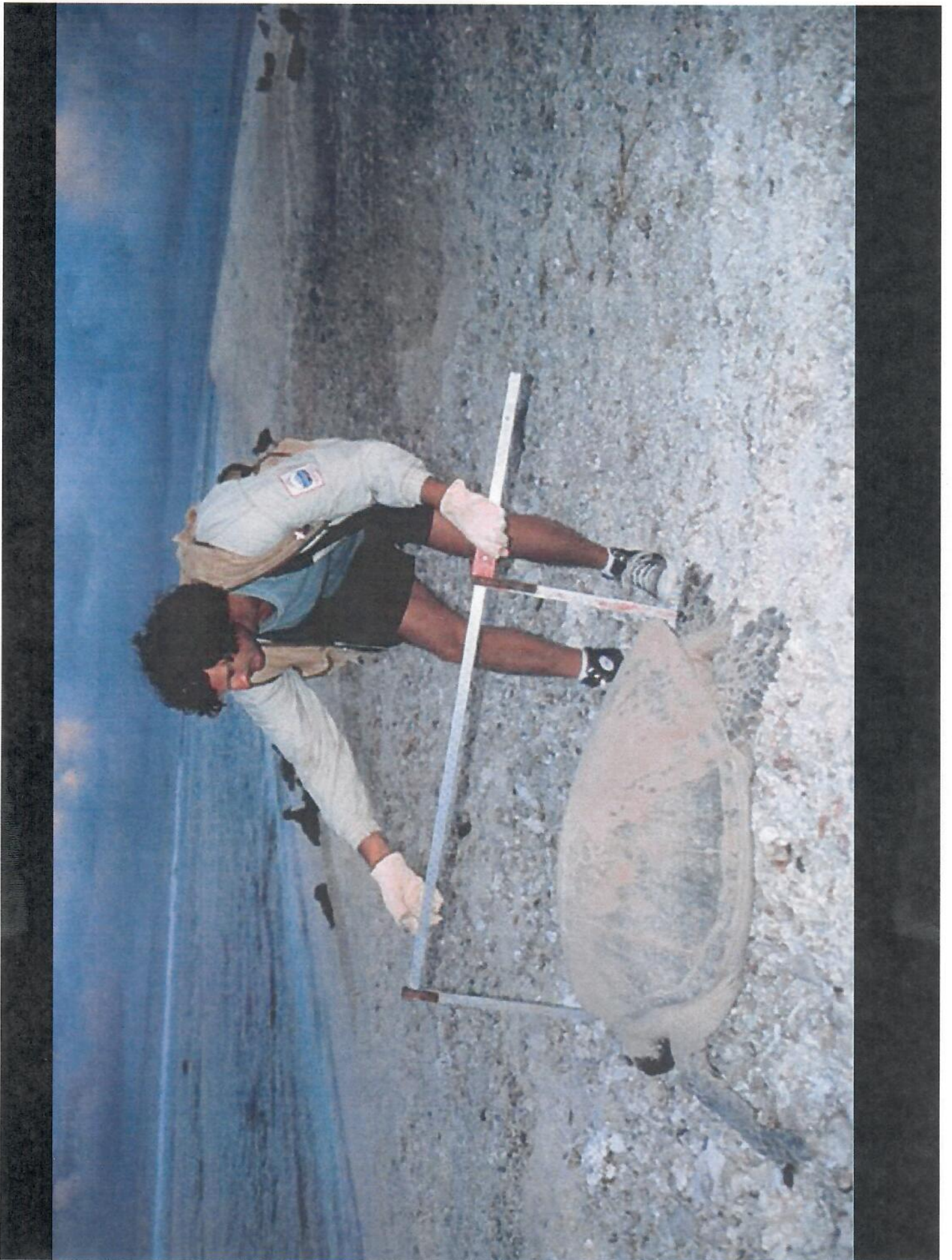






















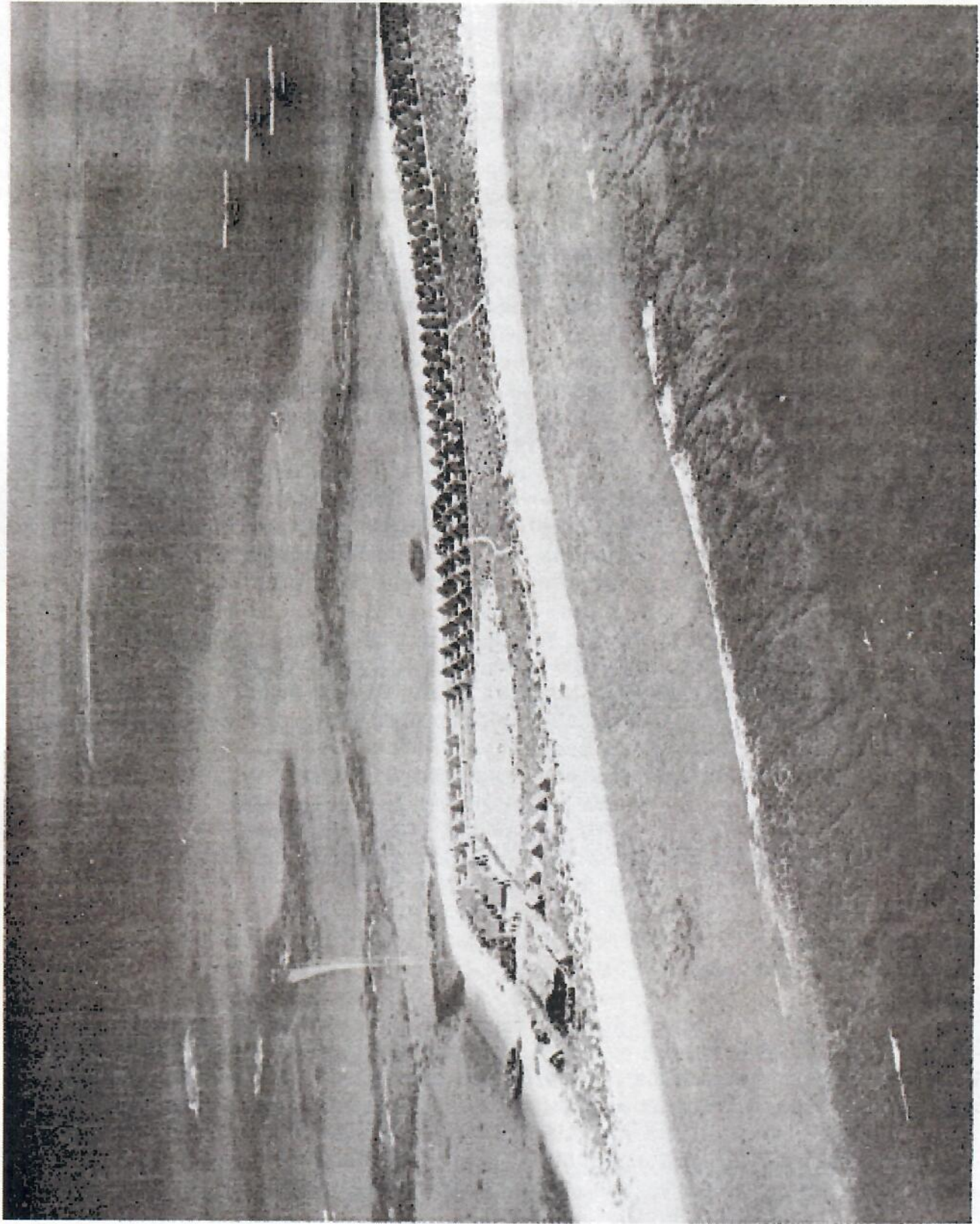


Figure 31. East Island "lent cil." 11 November 1935. Official U. S. Navy photograph.



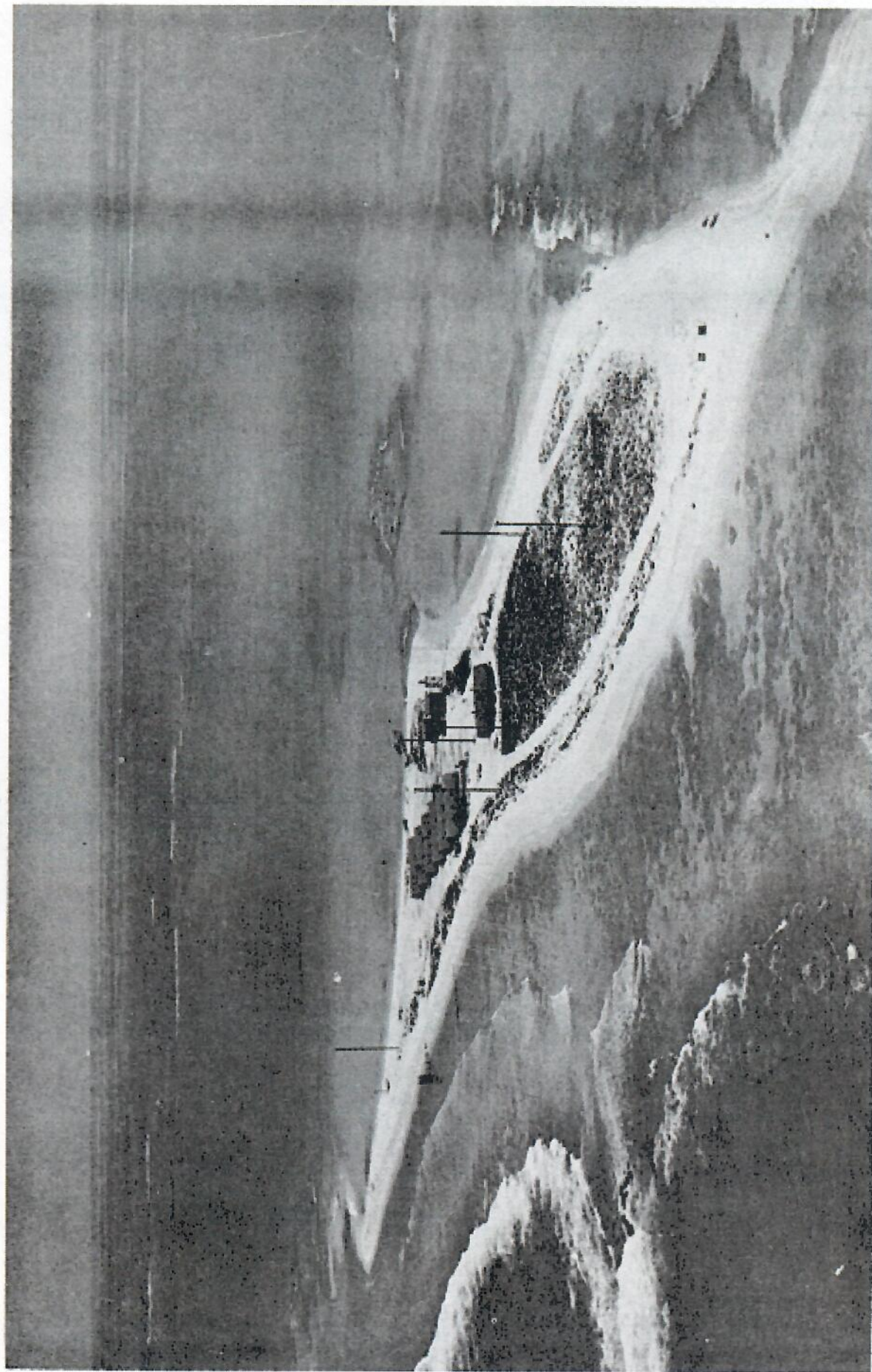


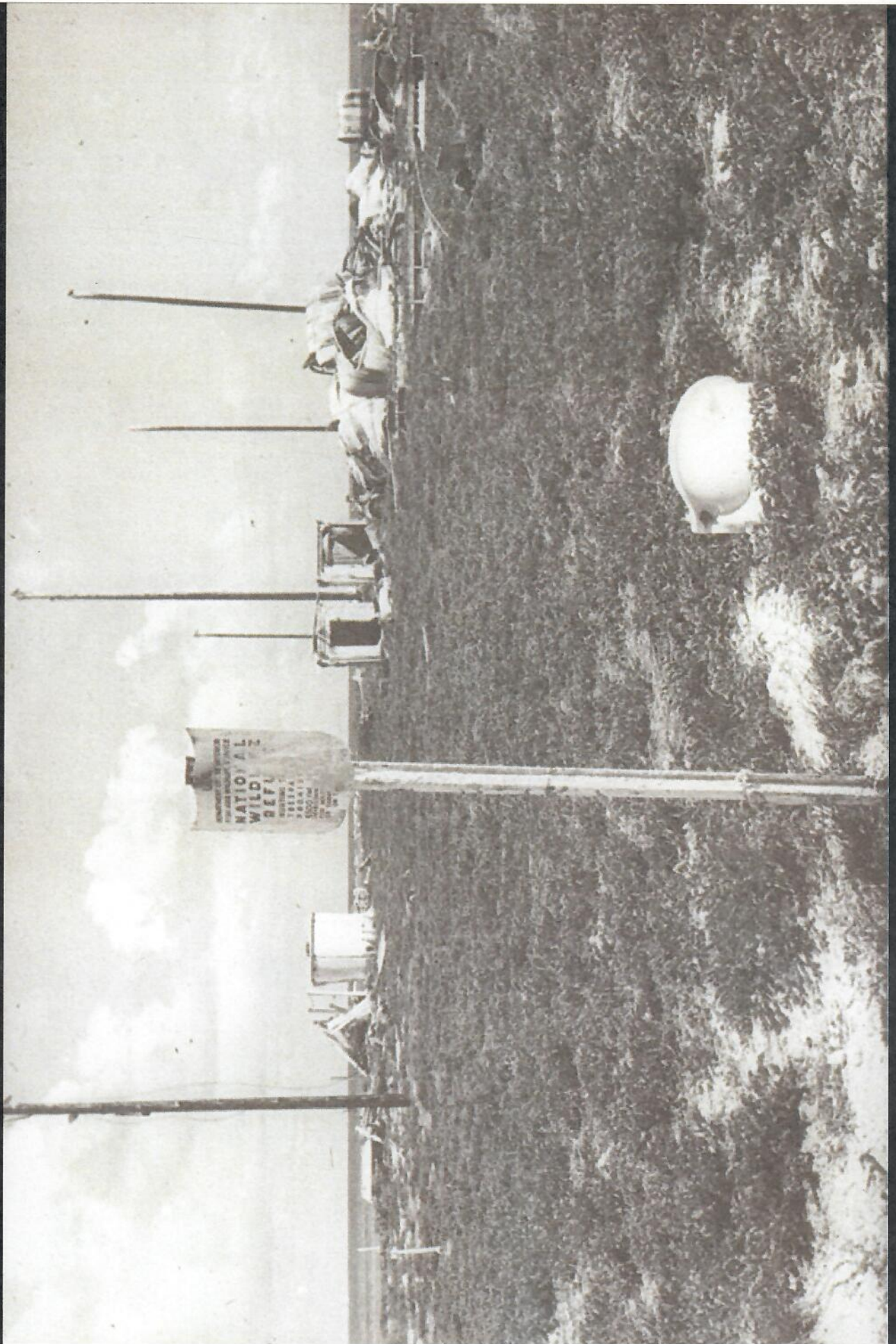
Figure 34. Newly constructed East Island Coast Guard Station, 24 April 1945.  
Official U. S. Navy photograph.





Figure 43. 'East Island's vegetation, June 1962. Hawaiian Division of Fish and Game photograph by David B. Marshall.















No. 150

December 20, 1971

~~PROPERTY OF LIBRARY  
NATIONAL MARINE FISHERY SERVICE  
ST. PETERSBURG BEACH  
ST. PETERSBURG BEACH~~  
LIBRARY OF  
GEORGE H. BALAZS

w/D

# ATOLL RESEARCH BULLETIN

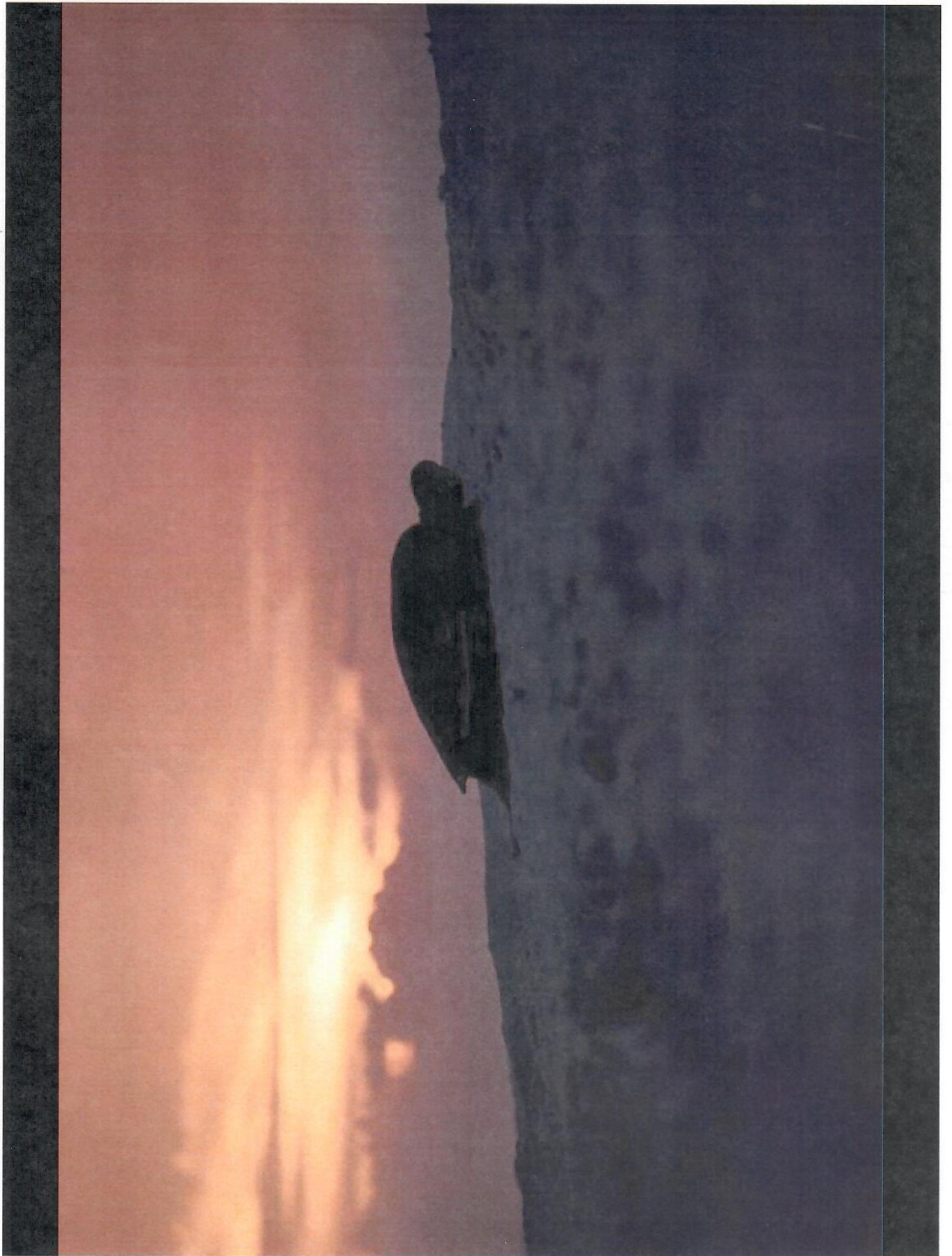
150. THE NATURAL HISTORY OF FRENCH FRIGATE SHOALS,  
NORTHWESTERN HAWAIIAN ISLANDS<sup>1</sup>

by A. Binion Amerson, Jr.



Issued by  
THE SMITHSONIAN INSTITUTION  
Washington, D.C., U.S.A.







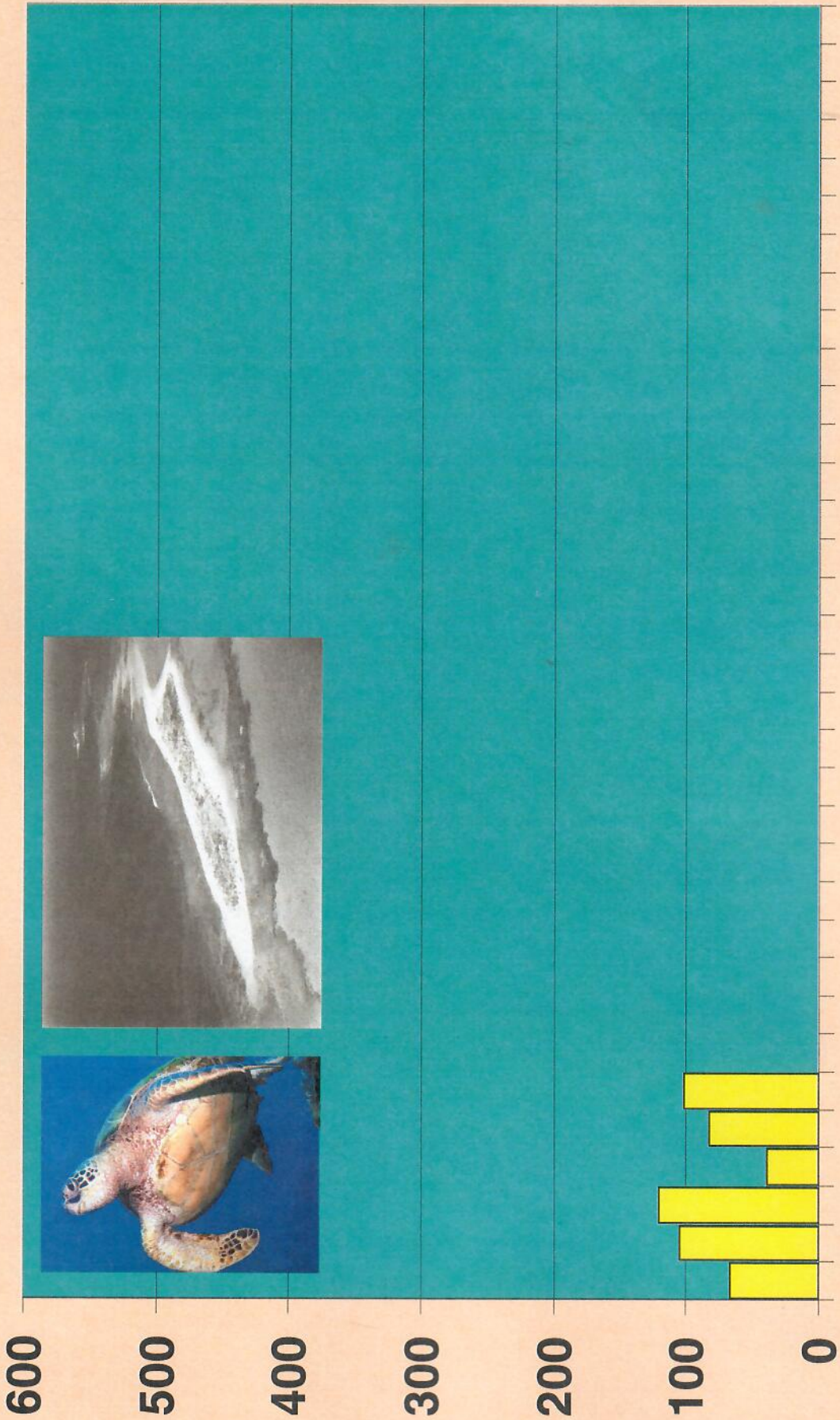








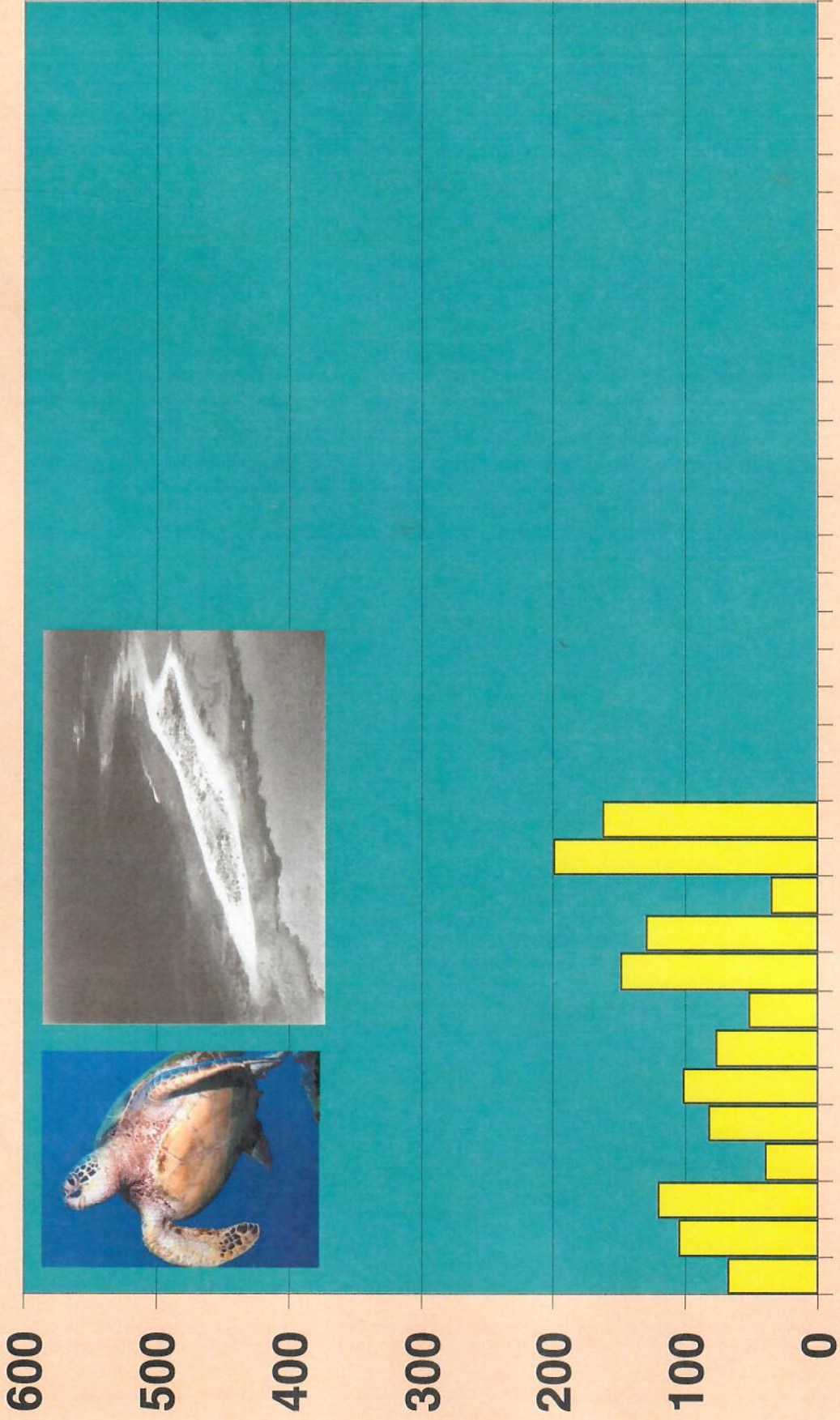
# GREEN TURTLES NESTING AT EAST ISLAND



73 75 78

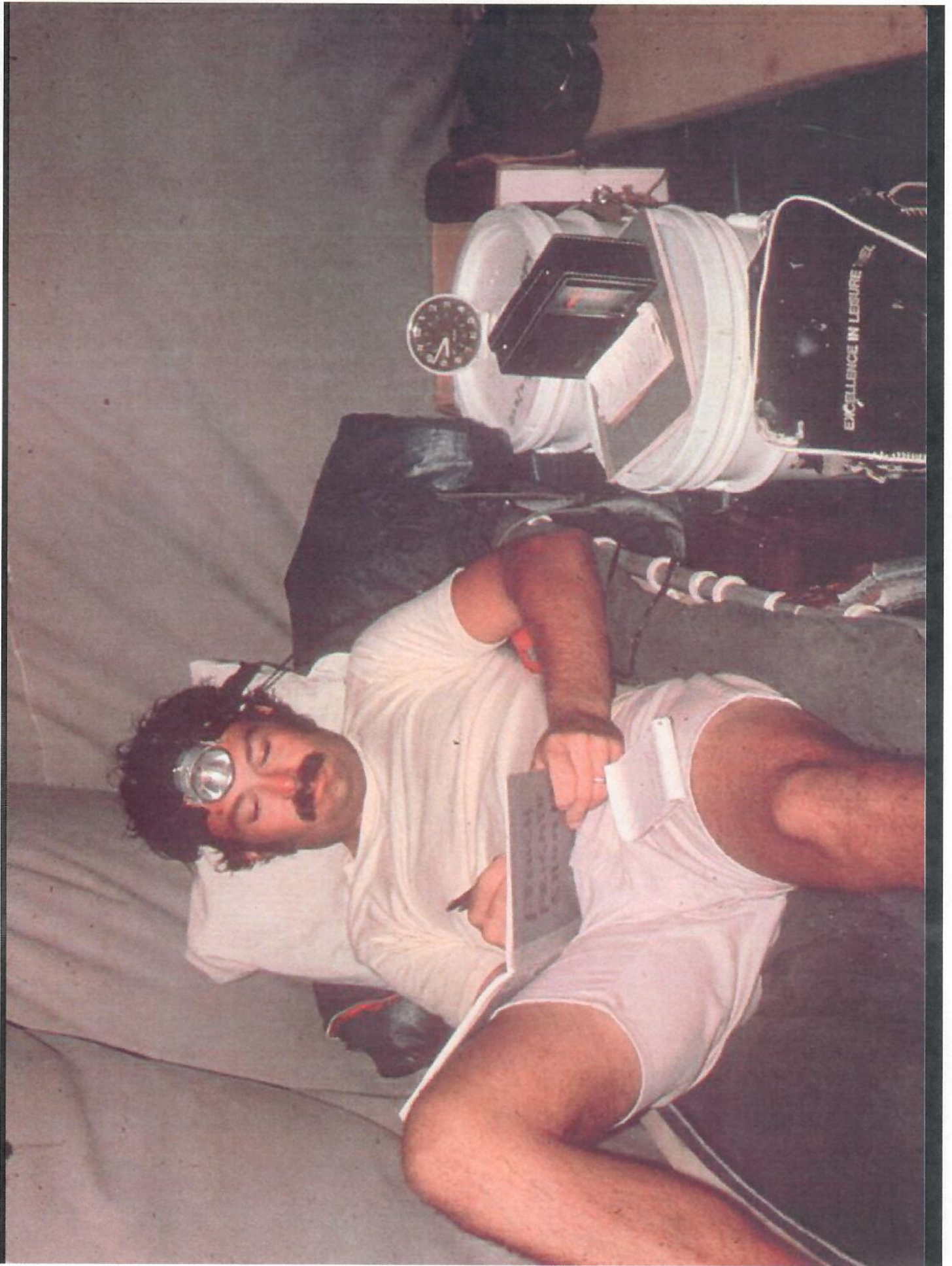


# GREEN TURTLES NESTING AT EAST ISLAND



73 75 77 79 81 83 85







# GREEN TURTLES NESTING AT EAST ISLAND

600

500

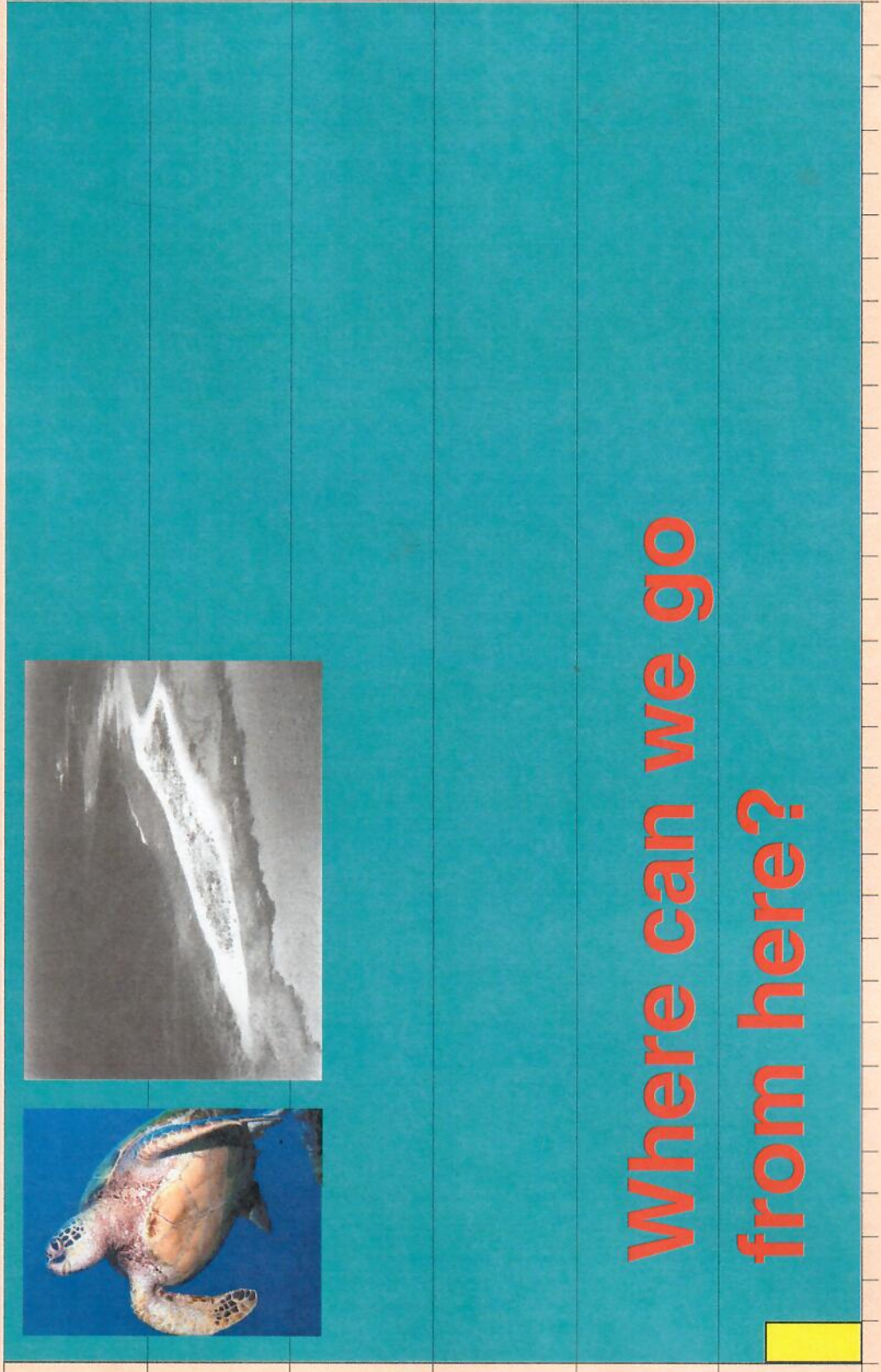
400

300

200

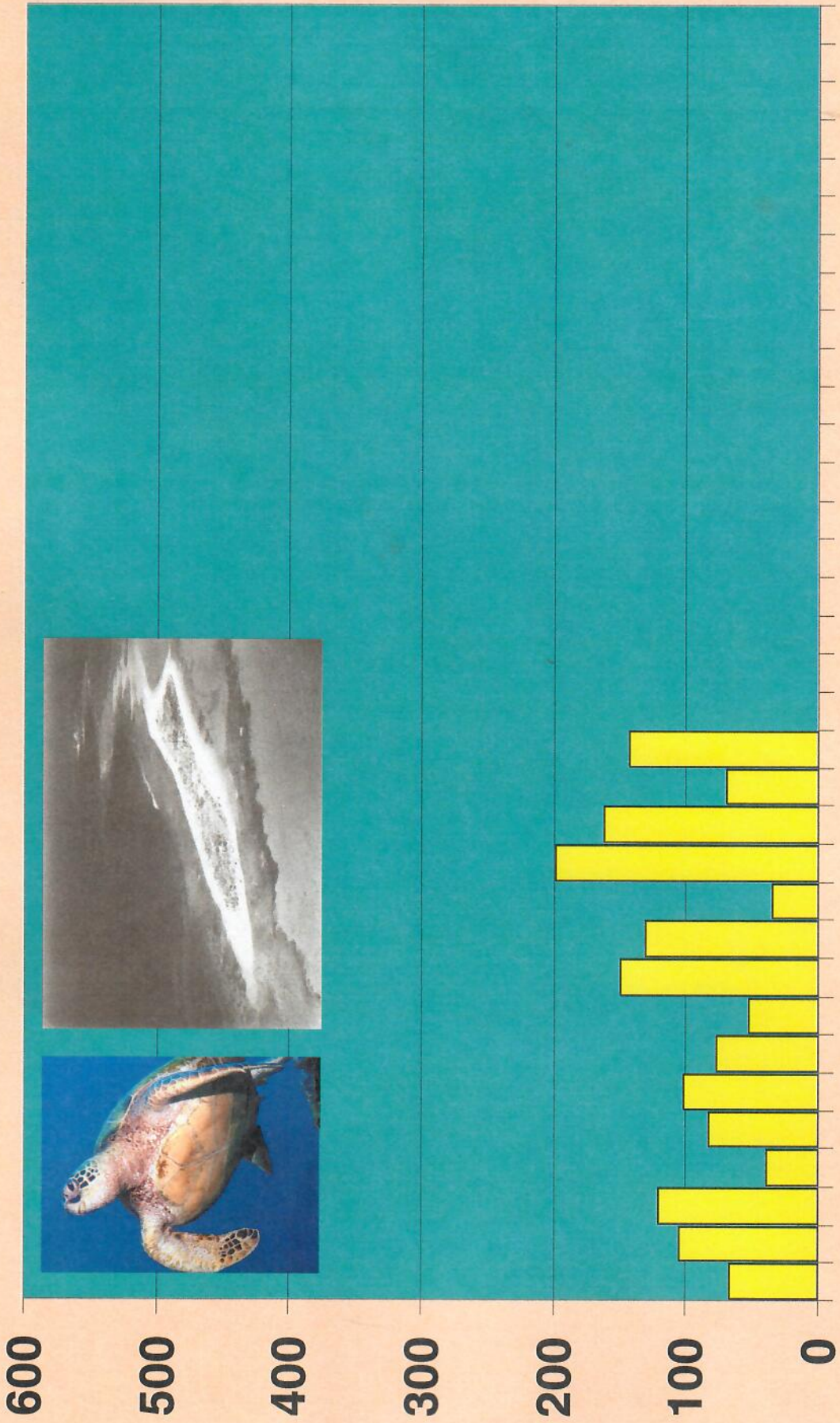
100

0





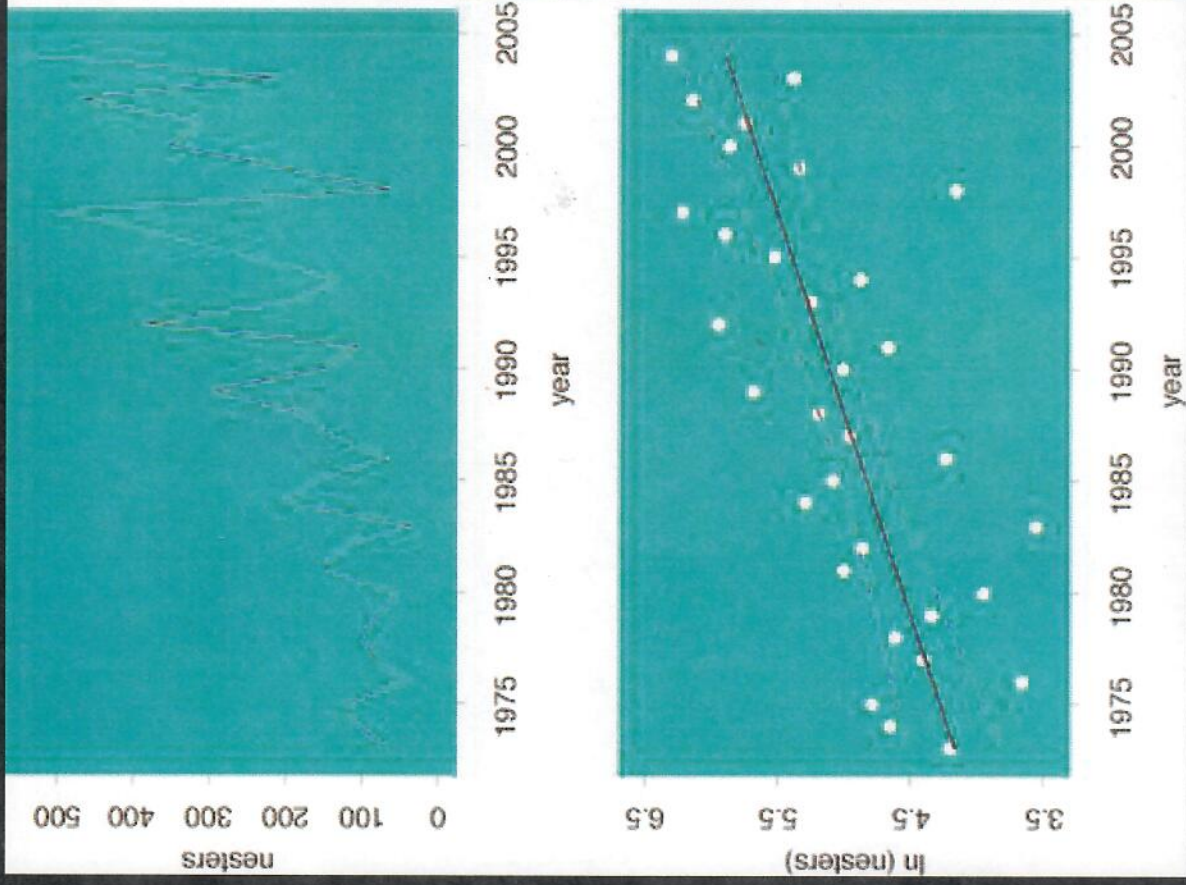
# GREEN TURTLES NESTING AT EAST ISLAND



73 75 77 79 81 83 85 87



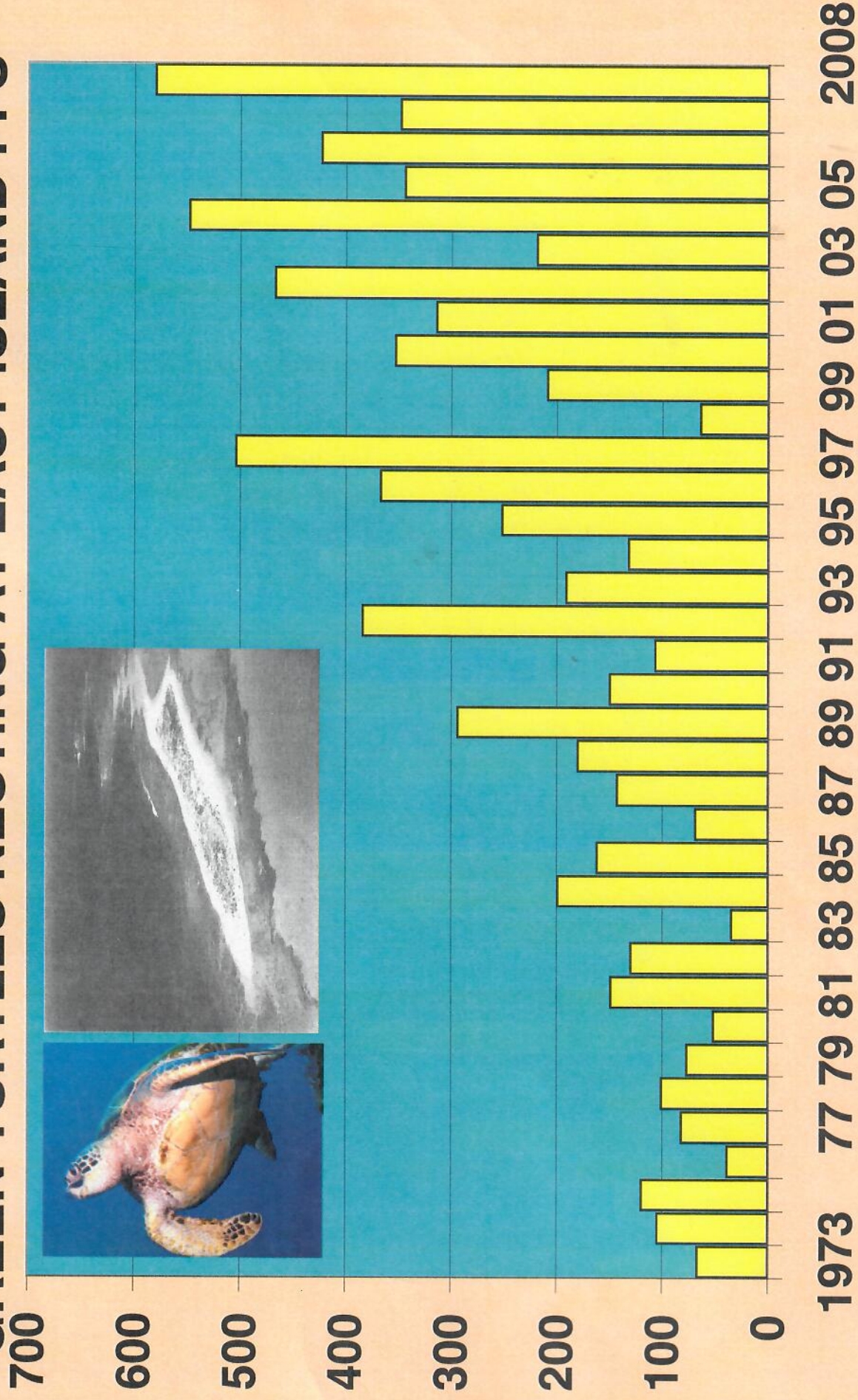
# Trends in nester abundance



East Island



# GREEN TURTLES NESTING AT EAST ISLAND FFS



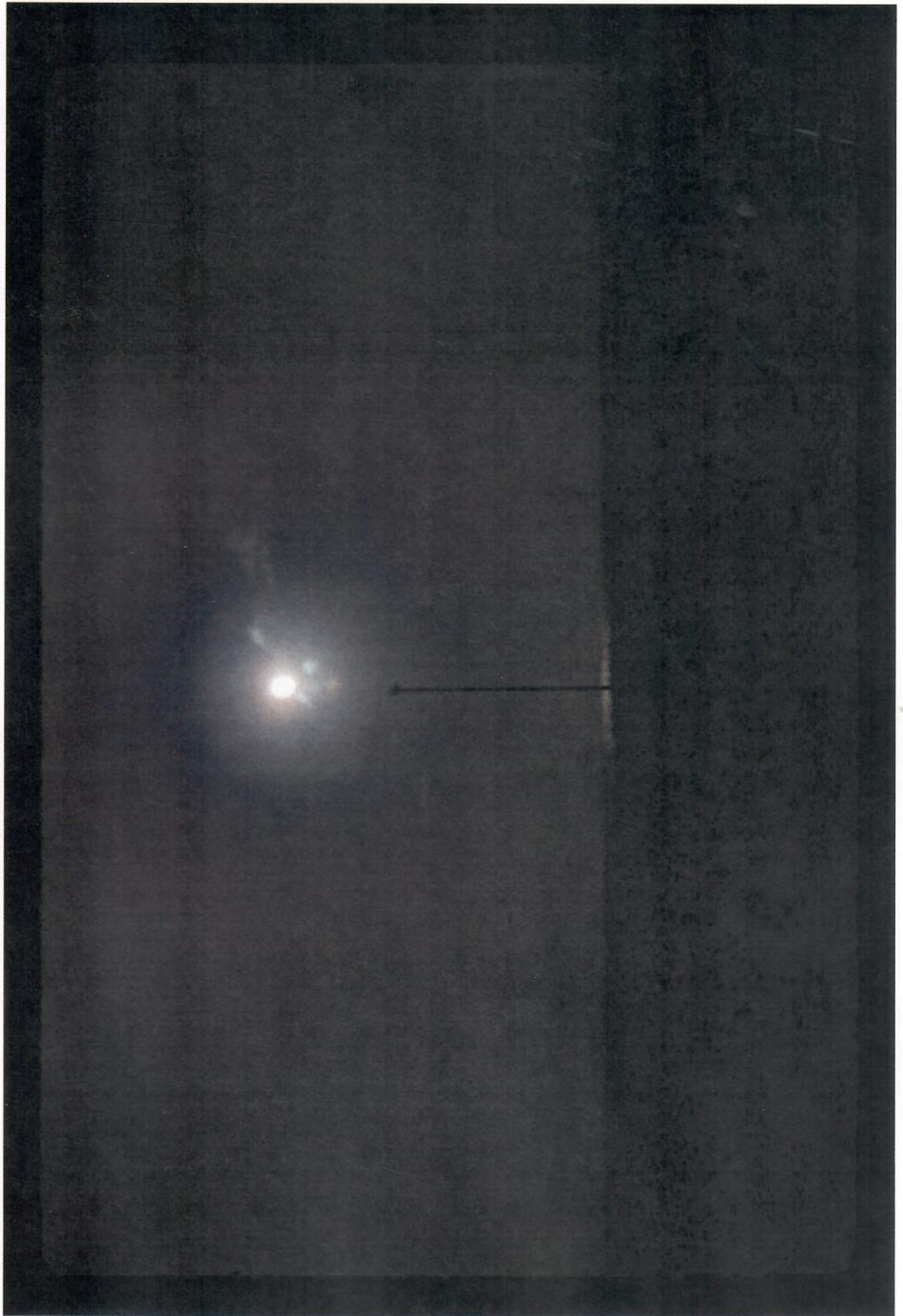
## ANNUAL TREND FOR 36 SEASONS

Marine Turtle Research  
 Pacific Islands Fisheries Science Center  
 National Marine Fisheries Service

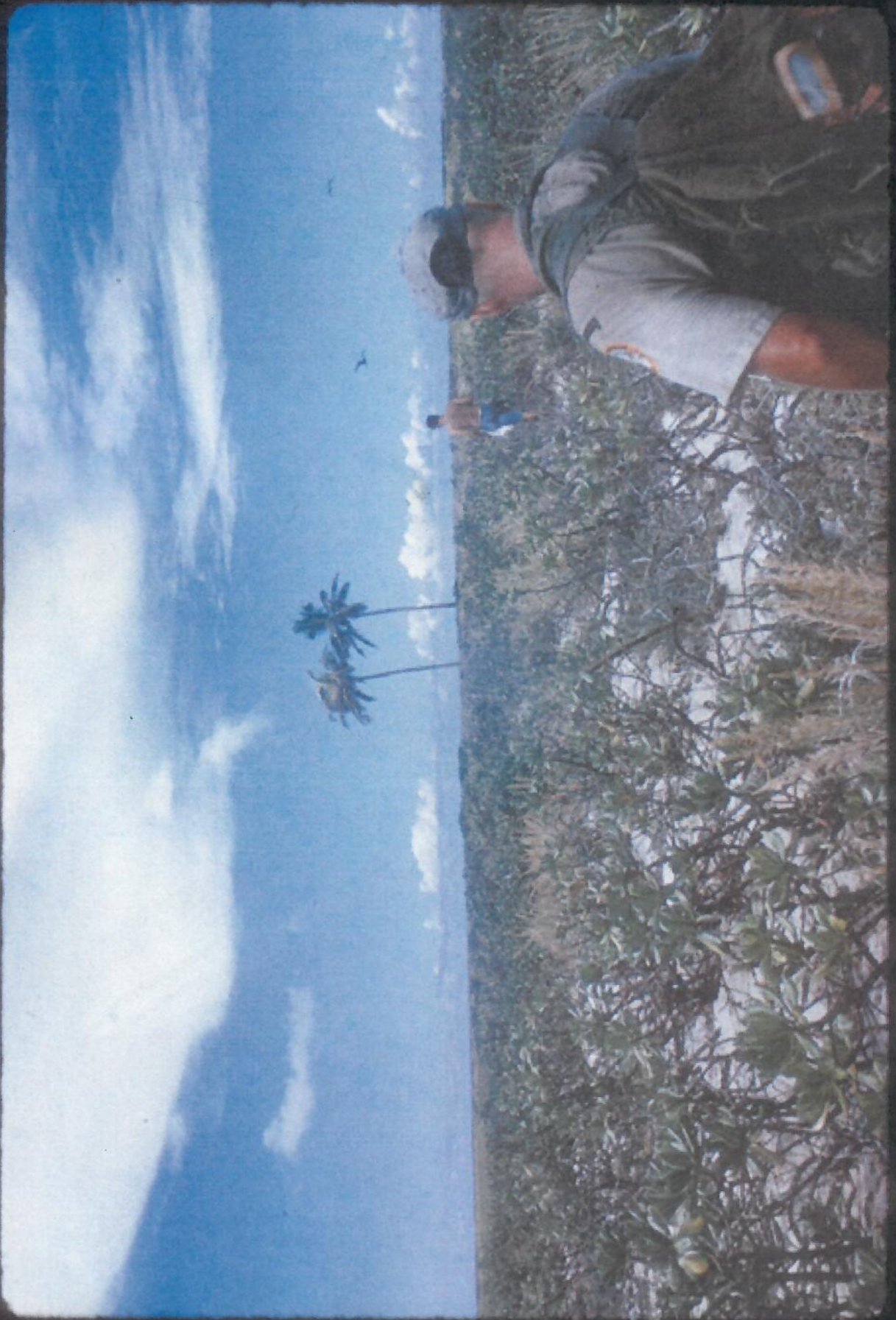
















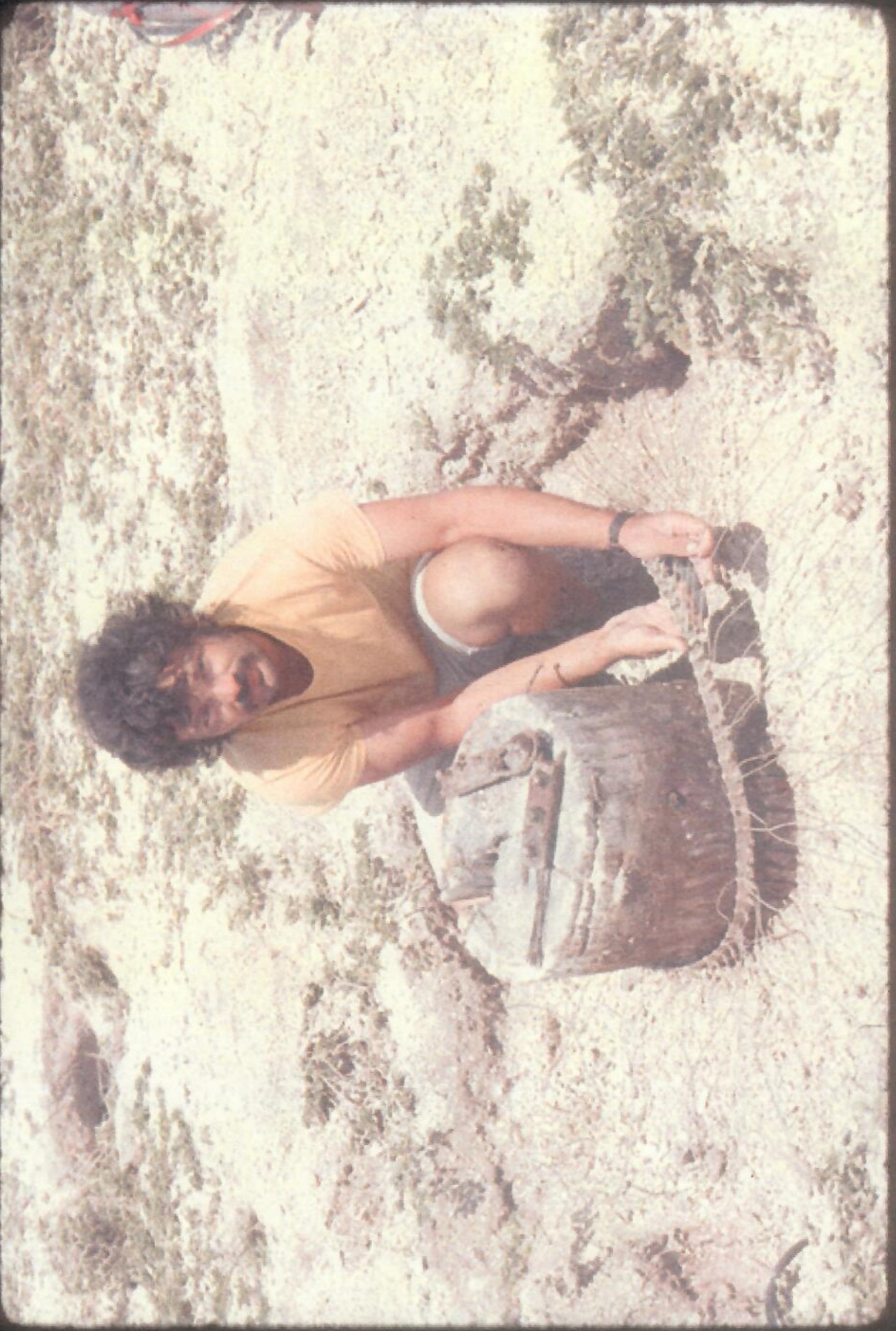


















HONOLULU ADVERTISER Friday, January 16, 1976 A-15



**WANTED!**

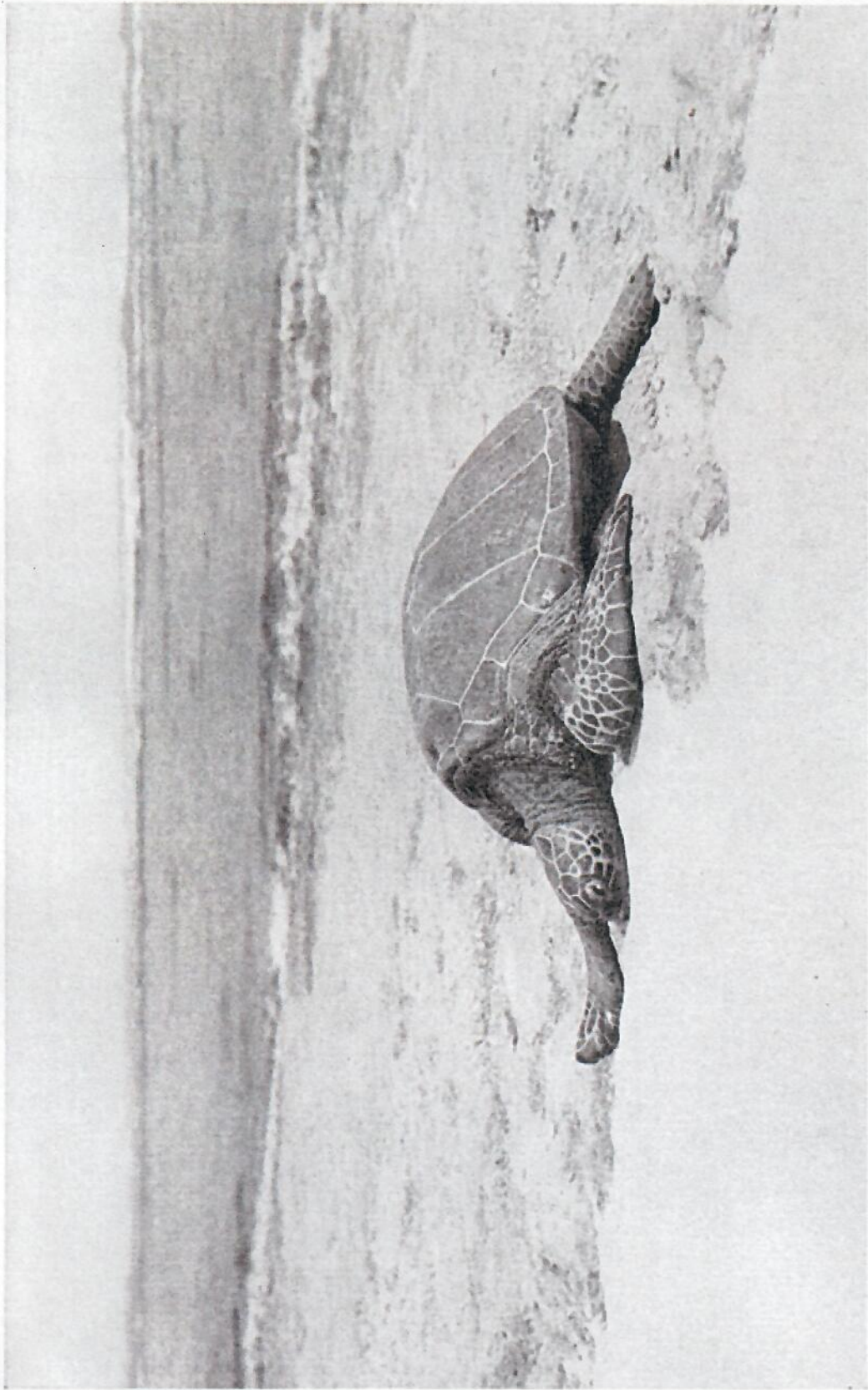


FOR  
STEAKS, SOUPS  
PURSES,  
SHOES  
ETC.  
ETC.









Photograph by Alexander Wetmore

**A GREEN TURTLE ASLEEP ON A SANDY BEACH: LISIANSKY ISLAND**

These grotesque creatures browse in submarine fields of algae until hunger is satisfied, and then crawl heavily out to sprawl in the sand, safe from enemies in the sea. On one occasion, the author, while walking 300 yards along the beach on Lisiansky Island, counted 80 of these creatures from fifteen inches to four feet in length. Others, feeding a few yards offshore, were hidden by ripples on the water and so escaped this casual census. Their only enemies seem to be sharks.



VOLUME XLVIII

NUMBER ONE

# THE NATIONAL GEOGRAPHIC MAGAZINE

JULY, 1925

## CONTENTS

TWENTY-FOUR PAGES IN FULL COLOR

### Rediscovering the Rhine

With 44 Illustrations

MELVILLE CHATER

### Pages from the Floral Life of America

With 35 Flower Paintings

MARY E. EATON

### Bird Life Among Lava Rock and Coral Sand

With 37 Illustrations

ALEXANDER WETMORE

PUBLISHED BY THE  
NATIONAL GEOGRAPHIC SOCIETY  
HUBBARD MEMORIAL HALL  
WASHINGTON, D.C.

\$3.50 A YEAR

50¢ THE COPY





**WILL ROBOTIC CAMERAS MONITOR  
NESTING SEASONS OF THE FUTURE?**





















**HAWAIIAN**  
**SEA TURTLE**  
**RESEARCH**











