

----- Forwarded message -----

Date: Thu, 4 Aug 2011 11:41:46 -1000 (HST)

From: George H. Balazs <gbalazs@honlab.nmfs.hawaii.edu>

To: Zach Johnson <zjohnson@hawaii.edu>, John Coney <jconey@hawaii.edu>, Megan Hess <hessm@hawaii.edu>, Dr. Jason Turner <jpturner@hawaii.edu>

Cc: Shawn Murakawa <shawn.murakawa@noaa.gov>, Shandell Brunson <Shandell.Brunson@noaa.gov>, Wendy Marks <Wendy.Marks@noaa.gov>, Tyler Bogardus <Tyler.Bogardus@noaa.gov>, Tyler Bogardus <Tyler.Bogardus@noaa.gov>, Leon Hallacher <leonh@hawaii.edu>, Karla McDermid <mcdermid@hawaii.edu>

Subject: Hilo- Re: Case #H136 Shell Damaged MTRP ID 7-29-11

Jason- I've decided I won't be calling Nancy, if you wish to of course then you should. Thank you for sending me her phone number. In a few minutes I'll be sending pictures that tell the story of the turtle.

The turtle has now been successfully treated and the shell repaired. A miniature satellite tag was put on the turtle and she was released yesterday afternoon at Kawaikui Beach Park on the South Shore of Oahu near our research facility. The turtle swam off strong and drove normal. Information on the turtles whereabouts, from the tracker, will be delayed due to some technical issues. Whoever on or about August 16 a tracking map will be generated and shared with everyone. Thereafter a map will be made about once a week, again to be shared with everyone.

The best medical advice (Doctor's orders) for the well-being of the turtle was to release it here, as soon as possible, without lengthy shipping transport issues, given the nature of the injury and the extremely vigorous-- near violent-- strength and activity of the turtle when with us.

Please see the pictures in my next message, you are free to share them with whomever you wish. However, doing a press release (if indeed that had crossed your mind) would not be appropriate until after the 16th. Aloha, George

Aloha Hilo Team and Affiliates- Our shell-repaired Hilo turtle is now back in the Hilo Region (please see attached). The satellite tracking for this turtle has been a bit tricky because the signals are few and far between. We are sure though that the turtle came around North Kohala and down the Hamakua Coast. If you hear of visual sightings, please let me know (cell phone text message would be best please-- plus an email). If the circumstance allows, we would be delighted to have photos. Cheers, George

George H. Balazs, Leader

Marine Turtle Research Program

NOAA, National Marine Fisheries Service

Pacific Islands Fisheries Science Center

2570 Dole Street

Honolulu, Hawaii 96822-2396 USA

Tel:(808) 983-5733

Fax:(808) 983-2902

gbalazs@honlab.nmfs.hawaii.edu

Greeting on this Friday afternoon before our Labor Day Weekend. The shell-mended green turtle has now slipped away from us here on Oahu. Please see the attached, she is now in the North Kohala region of the Big Island. The logical assumption is that she's headed back to Hilo. But only time will tell. It's very nice to know she's well enough to be making the journey.

If/when you have sighting reports that's back at 4-Mile please give me a

call 286-2899. For things like this pictures are also always appreciated.
And, if she hauls out to bask, then that's what she wants to do so should
be left in peace to do it. Very Best, George

George H. Balazs, Leader

Marine Turtle Research Program

NOAA, National Marine Fisheries Service

Pacific Islands Fisheries Science Center

2570 Dole Street

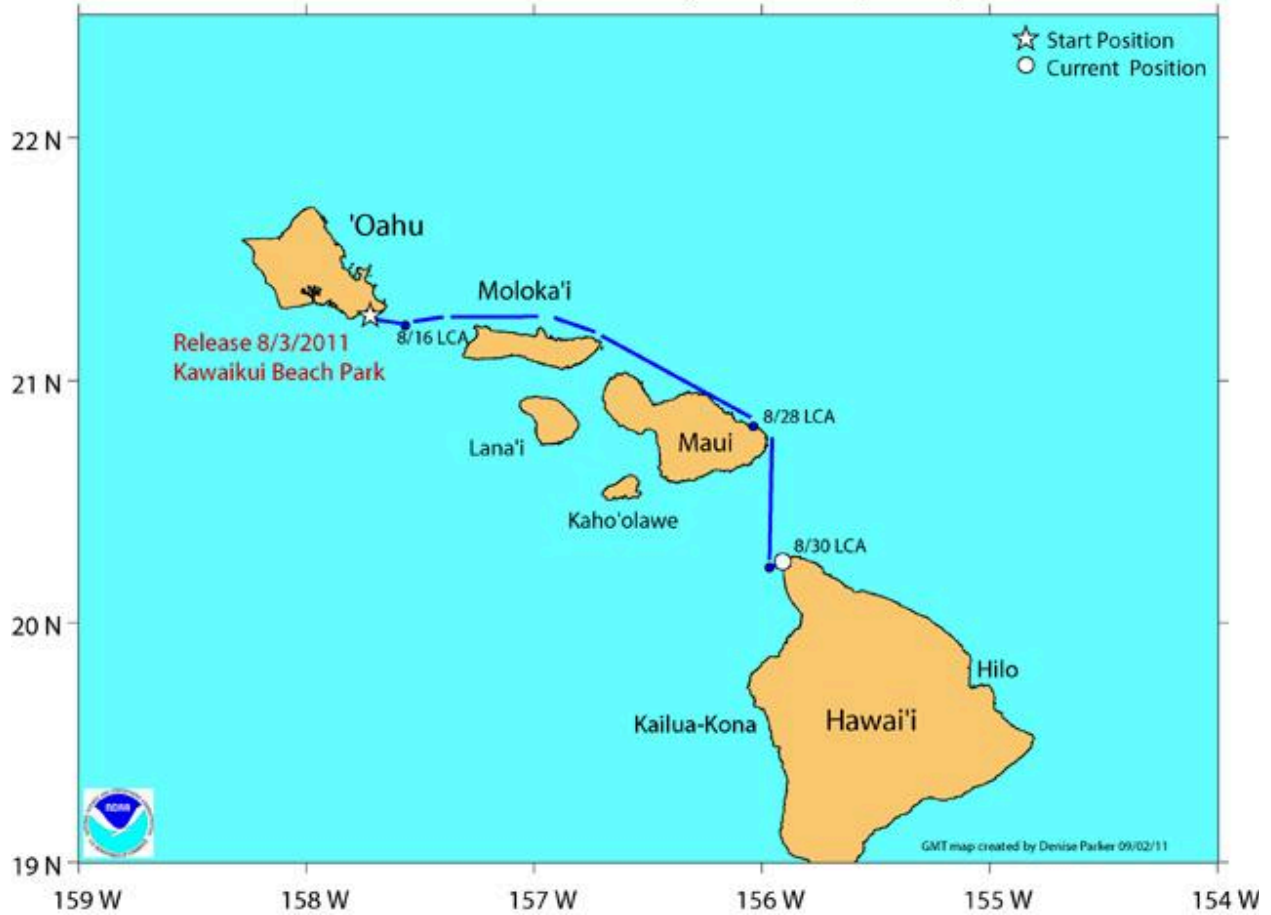
Honolulu, Hawaii 96822-2396 USA

Tel:(808) 983-5733

Fax:(808) 983-2902

gbalazs@honlab.nmfs.hawaii.edu

2011 movement of Hilo 4-mile rescued green turtle ID 71919
released 08/03/11 from Kawaikui Beach Park, Oahu SCL: 89.4 cm
SPOT5 transmitter Days transmitting: 29 days



Fri, Oct
14, 2011,
9:20 AM

Will_Seitz@contractor.nps.gov

to Jason,
DeniseM,
George,
Megan,
John,
Karla,
Shandell

Brunson,
Jennifer,
Tyler,
WendyM
arks,
Zach

Aloha Everybody,

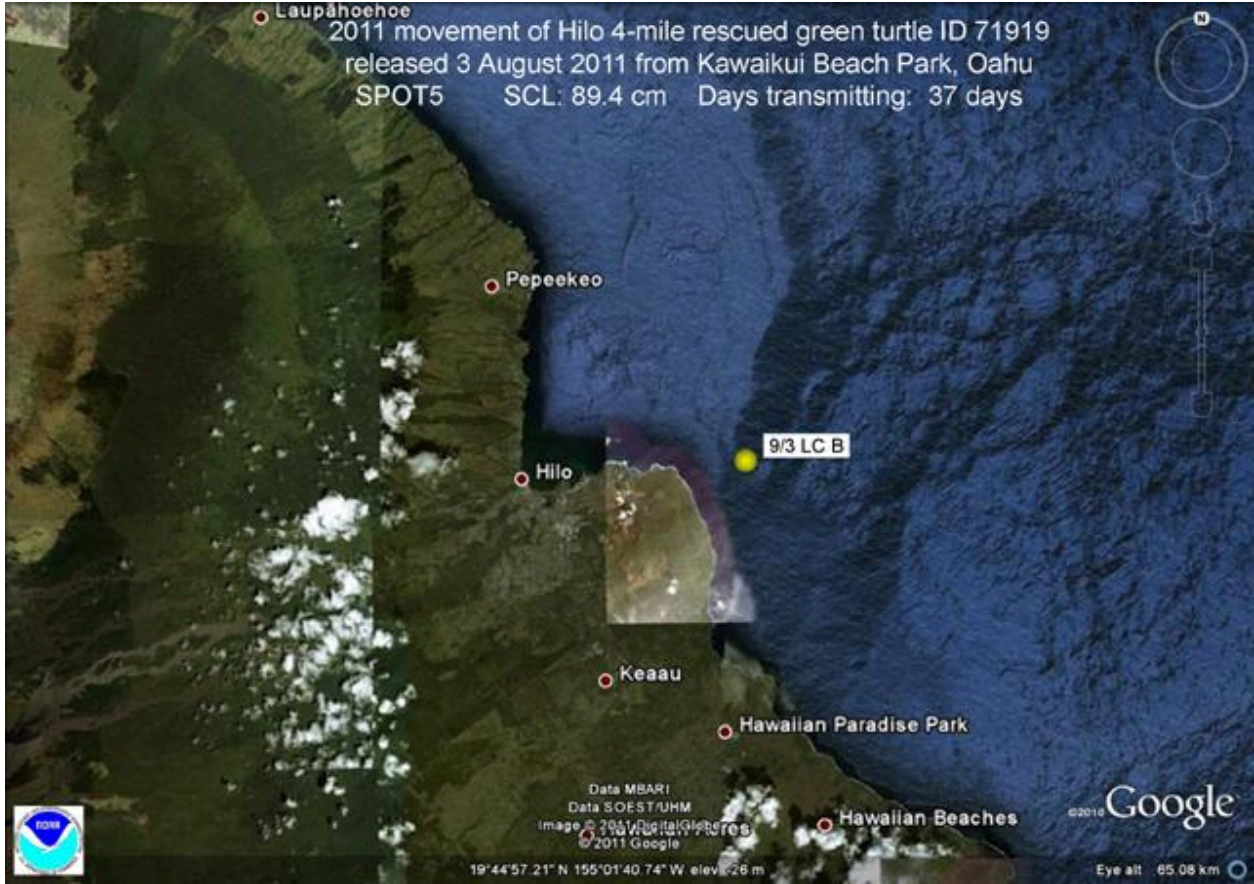
We received a call from a person named Billy Ebersole about this turtle. He said that he tried to call George, but has be able to get through. I told him that we could pass some information along.

I believe this turtle has been seen at Carl Smith Beach Park in Hilo. The first time he noticed the turtle was on Sept. 19th. The turtle has satellite transmitter with 722 written on it. The turtle did not have any metal tags. There was a fresh wound a the right, rear flipper that could have been from a shark. The second time he noticed the turtle the the carapace had been damaged as if layers had been scraped off.

I will ask him if he took any pictures. He is curious about the history of the turtle.

Aloha

Will



February 25, 2015 – report of possible “spearing” to the head, sent to Oahu for repair





July 15, 2015 –Release back to 4-Mile Beach





