

Necropsy findings of loggerheads in North Pacific

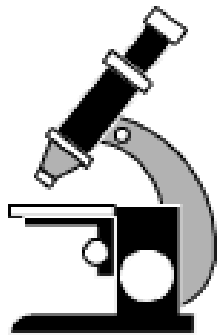
Thierry M. Work

US Geological Survey
National Wildlife Health Center
Honolulu Field Station

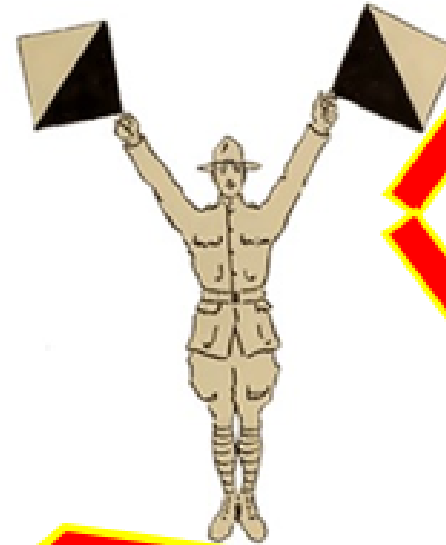


Honolulu Field Station

Technical assistance

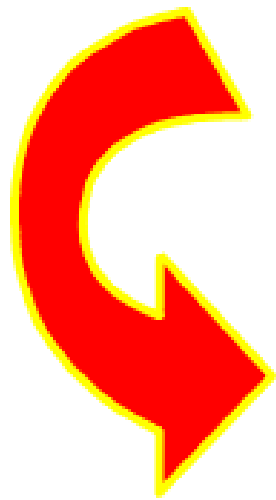
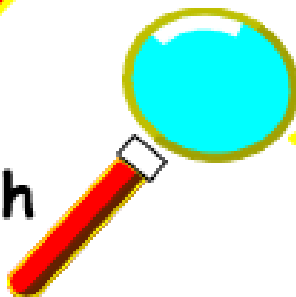


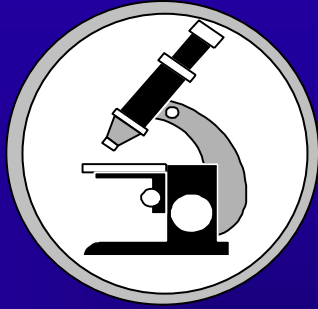
Outreach



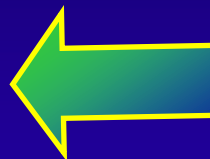
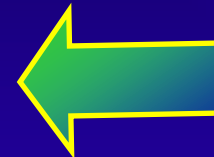
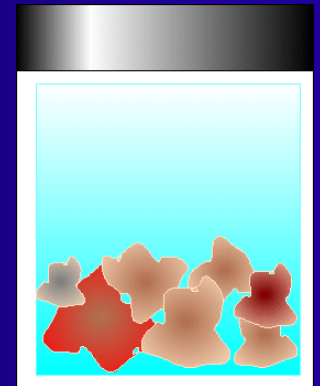
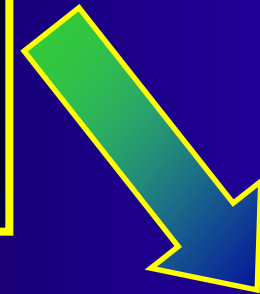
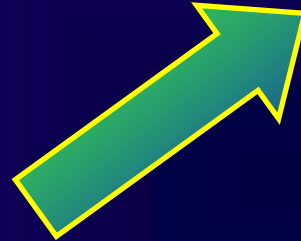
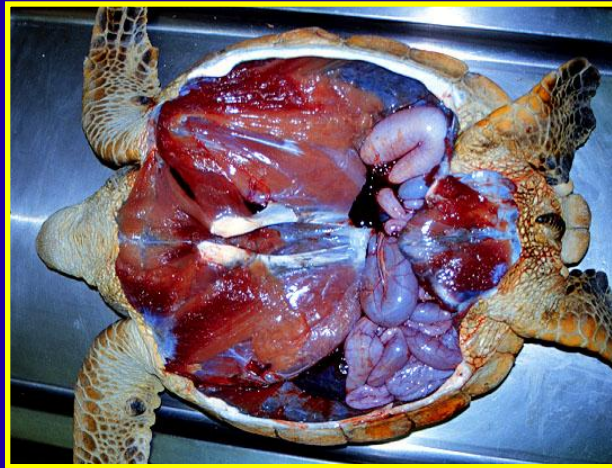
Management

Research

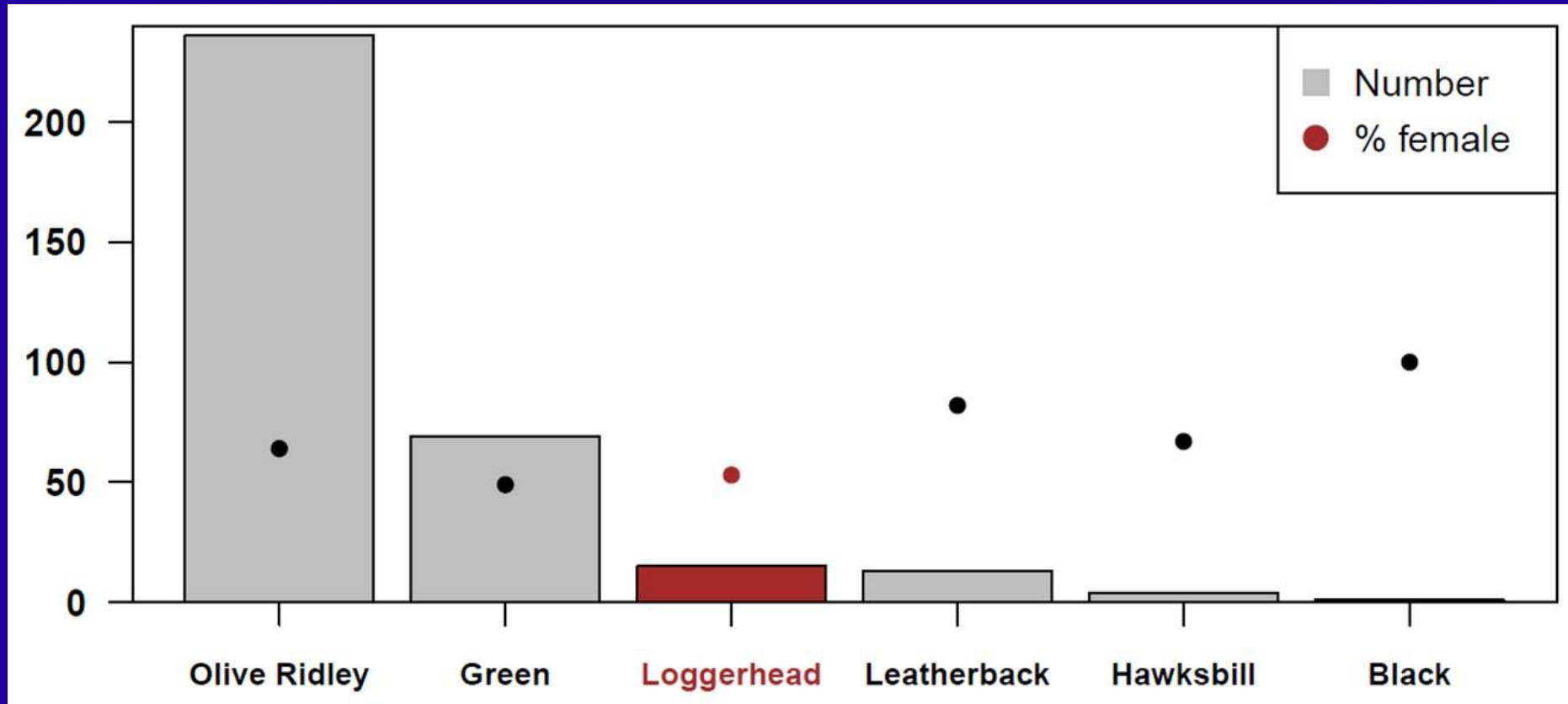




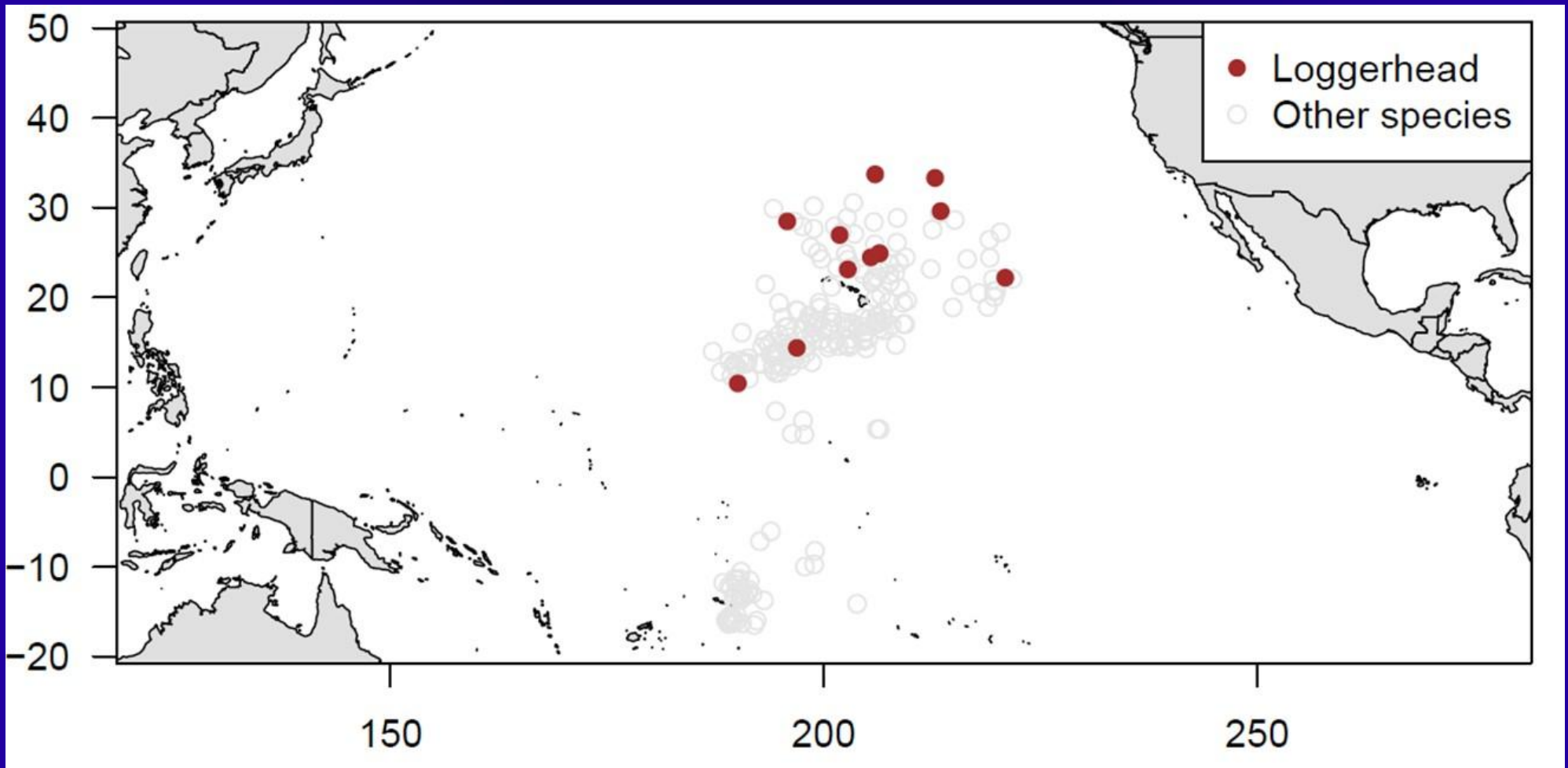
Pathology



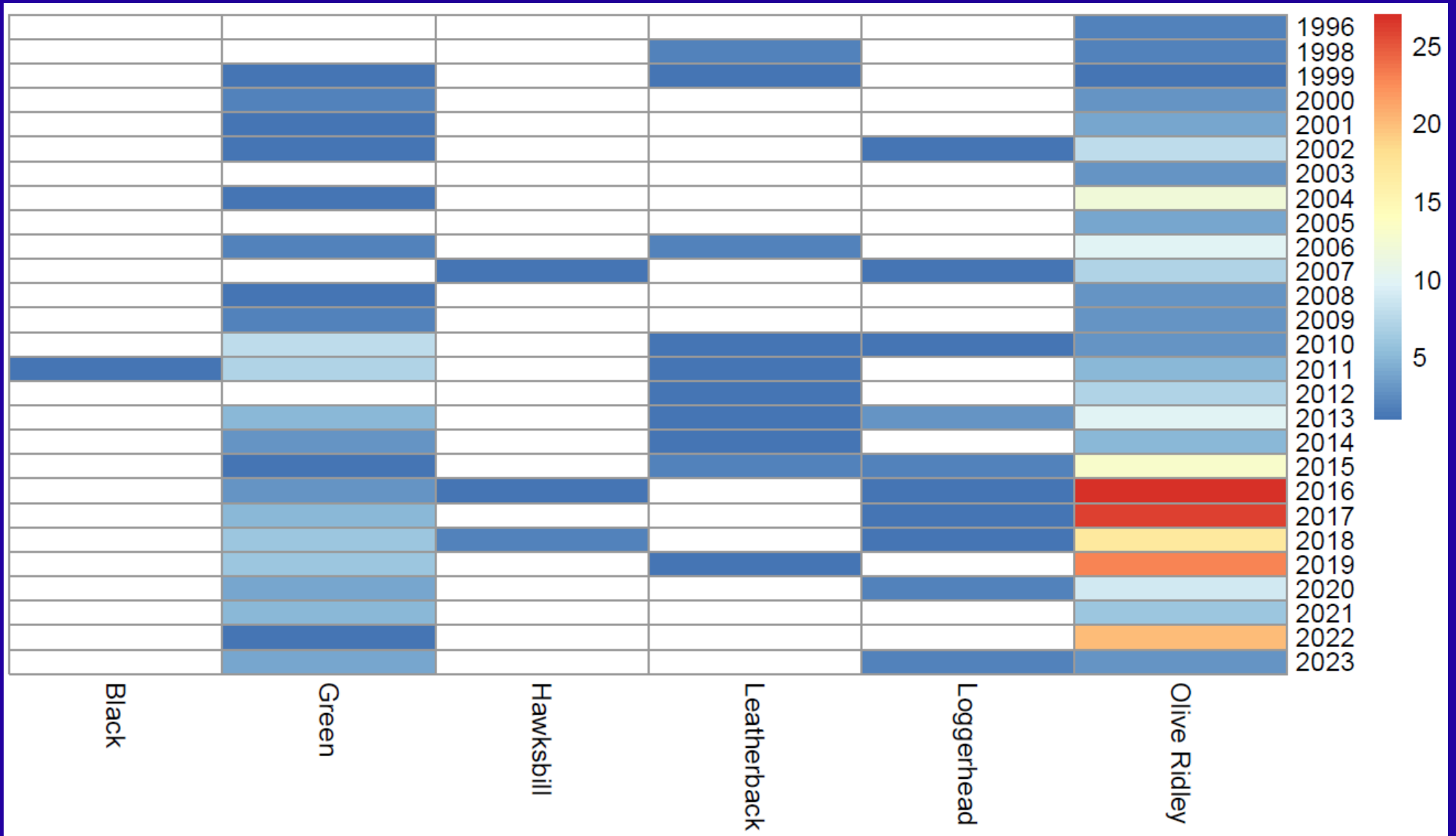
15 loggerheads necropsied



Location



Timeline



Range of SCL (cm): 43–72.9

Range of weights (kg): 13.2–60.6

**Cause of death: Forced
submergence**

HOST SPECIFIC RENAL SALMONELLOSIS IN PELAGIC AND STRANDED OLIVE RIDPLES

